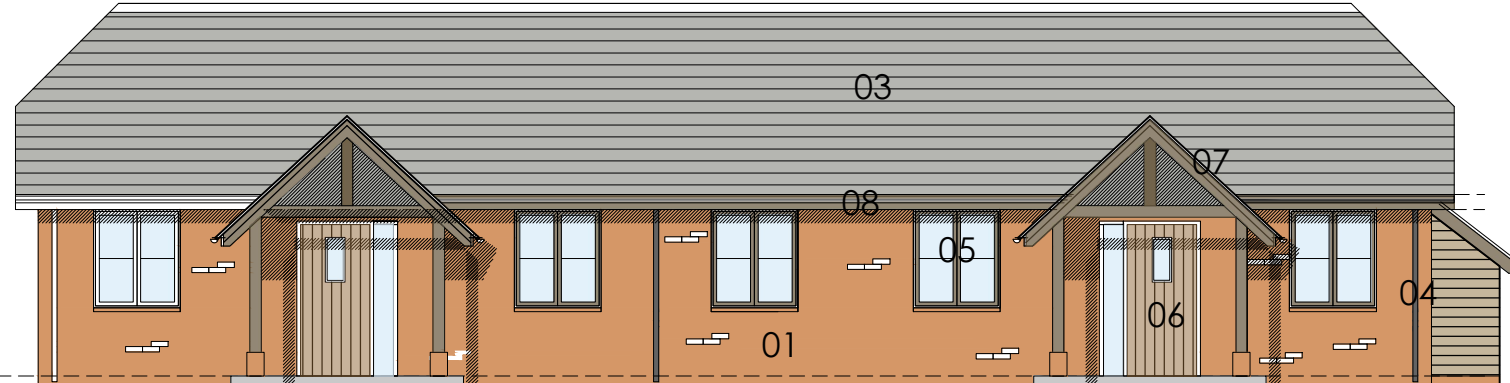
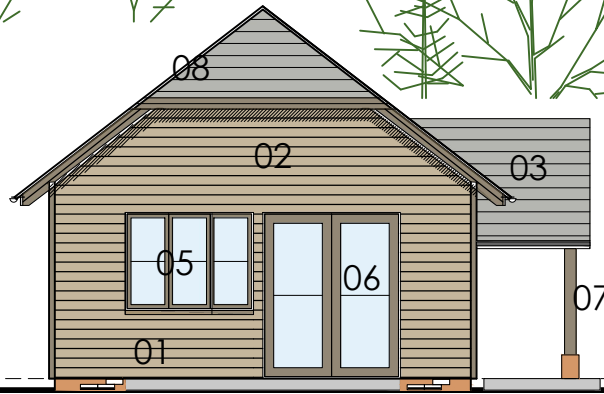
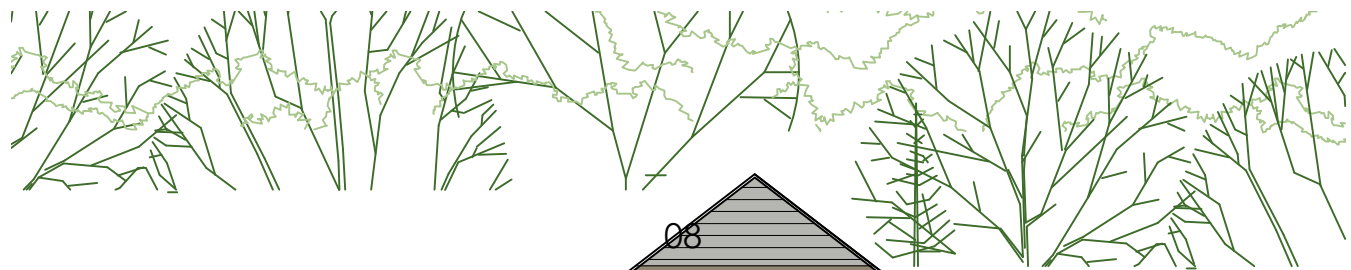


The Queens at Selborne

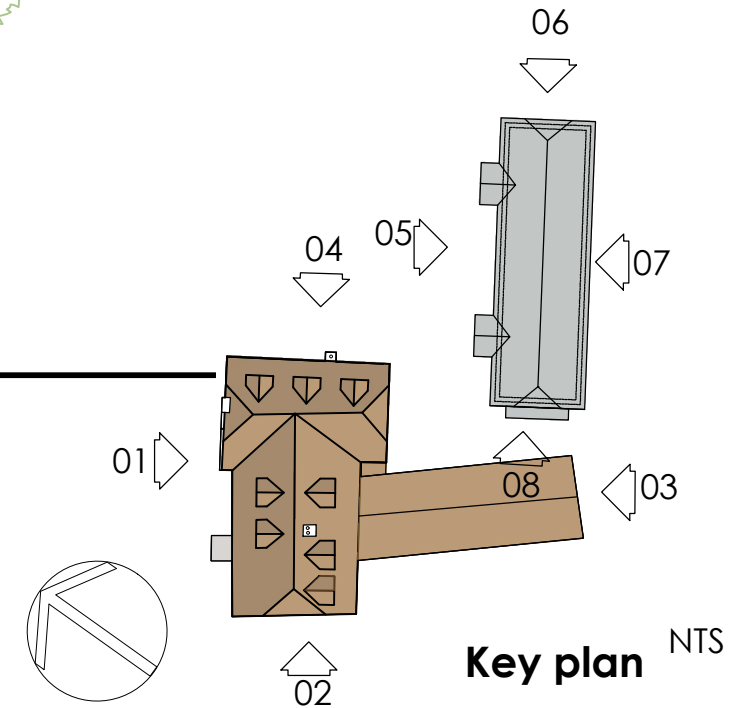
This drawing is copyright and is not to be reproduced. The contractor will be held responsible for the accuracy of works involving the setting out and checking of all dimensions on the drawing and on site. Dimensions must not be scaled from this drawing.



05 North West Elevation



06 North East Elevation



Material Key

1. Walls - Handmade Brickwork to match existing, flemish bond.
2. Walls - Horizontal oak boarding with oak corner posts.
3. Roof - Slate
4. Gutters/downpipes - Black aluminium half round
5. Windows - timber double glazed
6. Doors - hardwood timber
7. Entrance - Oak timber frame
8. Fascias/soffits - oak with rafter feet expressed.

Rev d - 27/04/2021 - Bike storage 'lean to' added to side of new single storey block. Existing hedge removed. New accommodation block moved to edge of Huckers Lane. Length of block reduced, Half hip added to roof design, timber cladding revised on elevation.
 Rev C - 09/04/2021 - Visibility on Huckers Lane illustrated
 Rev b - 15/12/2020 - side extension removed, single storey retained, new single storey block added to rear
 rev a- flat roof replaced with dormer, transom added to windows

Planning