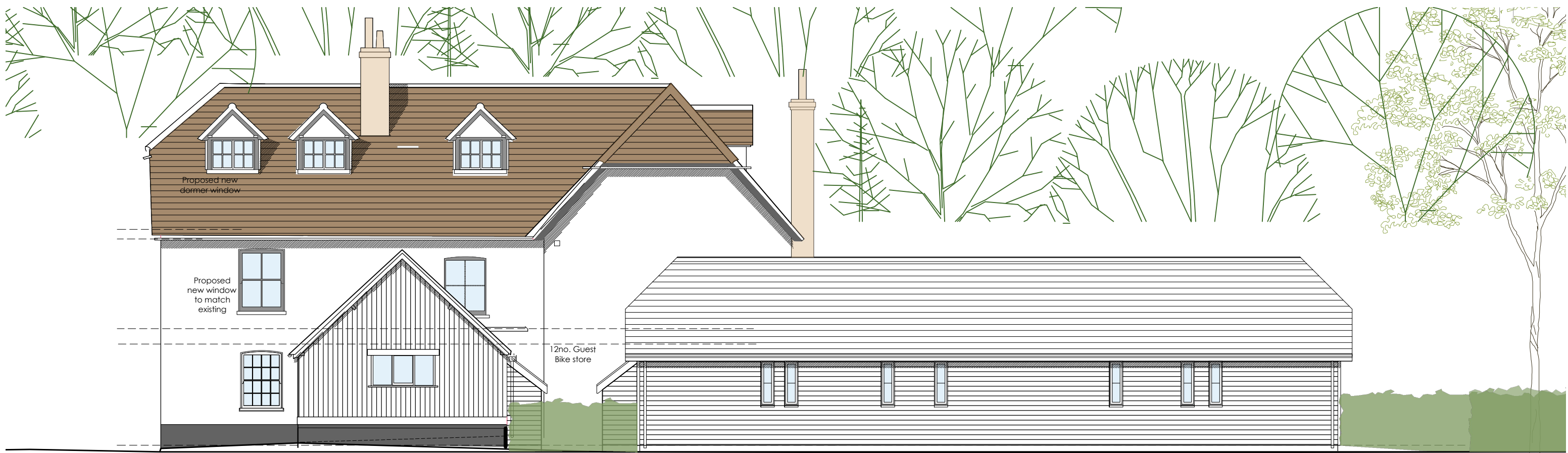
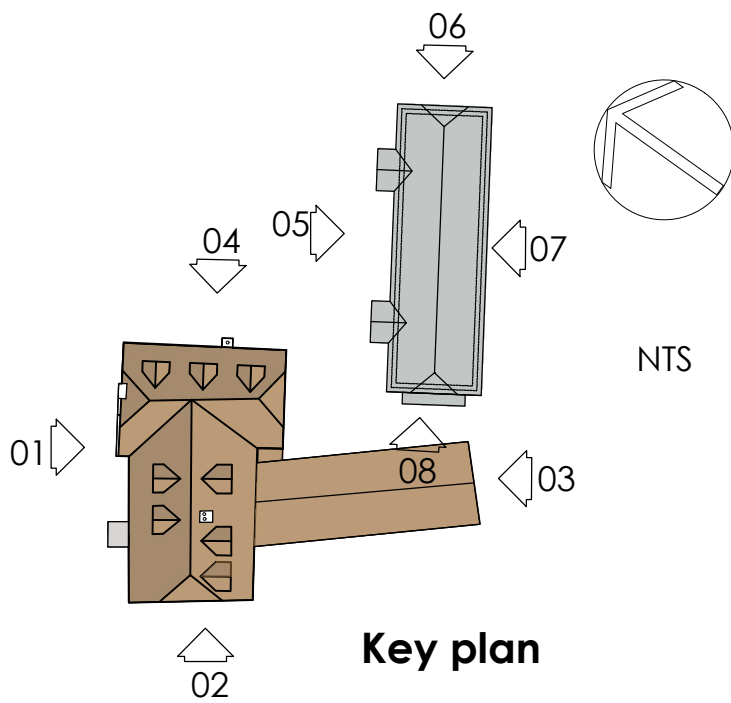


# The Queens at Selborne

This drawing is copyright and is not to be reproduced. The contractor will be held responsible for the accuracy of works involving the setting out and checking of all dimensions on the drawing and on site. Dimensions must not be scaled from this drawing.



03 South East Elevation - street view



03 South East Elevation

## Planning

Rev e - 27/04/2021 - Bike storage 'lean to' added to rear of existing single storey block. Existing hedge removed, New accommodation block moved to edge of Hucker's Lane. Length of block reduced, Half hip added to roof design, timber cladding revised on elevation.  
 Rev d - 15/12/2020 - side extension removed, single storey retained, new single storey block added to rear  
 rev c- flat roof replaced with dormer, transom added to windows  
 15.05.20 b - extension revised, view updated  
 31.07.18 A - CLADDING REMOVED FROM ENTRANCE  
 REVISIONS:

**barclay+phillips**  
architects

a: The Studio, 5 Oakridge Office Park,  
Southampton Road, Salisbury SP5 3HT  
e: enquiries@barclay-phillips.co.uk  
t: +44 (0) 1722 711177

[www.barclay-phillips.co.uk](http://www.barclay-phillips.co.uk)

PROJECT:  
Proposed Re-development of The Queens at Selborne, High Street,  
Selborne, Hampshire, GU34 3JJ

CLIENT:  
Derek Warwick Developments Ltd.

DRAWING TITLE:  
Proposed South East Elevation



SCALE:  
1:100 @ A3

DATE:  
Mar 2018

DRAWING No.  
**P18-014**  
02-05-003e

DRAWN BY:  
LA

CHECKED BY:  
NB