



**Selborne Village Design Statement (SVDS)
Consultation Statement**

March 2024

(1) Introduction

- 1.1 This Consultation Statement has been prepared in accordance with Regulation 12 of the Town and Country Planning (Local Planning) (England) Regulations 2012.
- 1.2 This Consultation Statement sets out the details of the public consultations, along with the details of how, when, and with whom, the public consultations with interested parties and organisations took place, and how this has informed the Selborne Village Design Statement (SVDS).

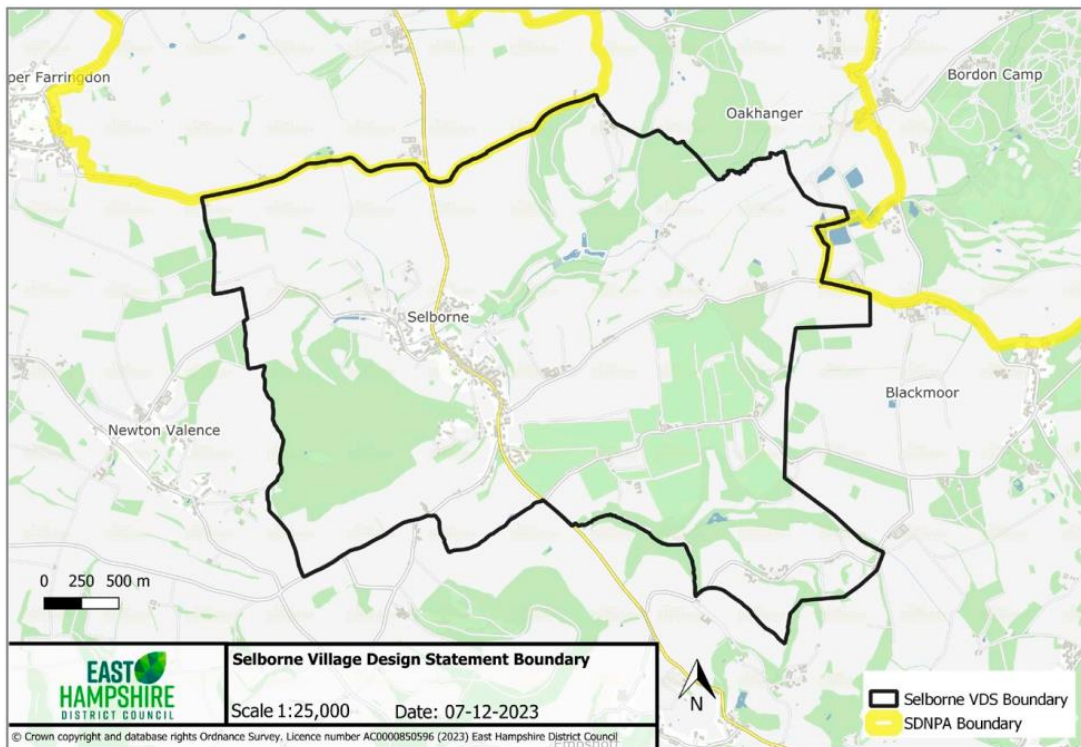
(2) What is a Village Design Statement?

- 2.1 A Village Design Statement (VDS) is prepared by a town or parish council with the support of the wider community – for example, in the form of a steering group.
- 2.2 A VDS is used to describe the distinctive character of a village and its surrounding countryside. To do this, community consultation and engagement is undertaken to establish the distinctive character and/or key design issues in a local area. This information is then used to develop design principles (or “Design Guidelines [DGs]”) which help planners, developers, and individuals to understand local issues and design aspirations. Moreover, a VDS can also be used to help influence future local design policies and support good planning, in order to improve design and support sustainable change and development.
- 2.3 A VDS – subject to public consultation and assessment – can be adopted by a Local Planning Authority (LPA) as a Supplementary Planning Document (SPD). As set out in the Planning Practice Guidance (PPG)¹, an SPD should build upon, and provide more detailed advice or guidance on, policies in the Adopted Local Plan.
- 2.4 The Adopted Local Plan is the South Downs Local Plan (SDLP) [Adopted 02 July 2019]. A VDS can provide further detail in terms of local landscape character and local design for the purposes of interpreting and implementing SDLP Policies **SD4 (Landscape Character)** and **SD5 (Design)** for a specific village.
- 2.5 It should be emphasised that an SPD does not form part of the Development Plan, and so it cannot introduce new planning policies into the Development Plan. However, an SPD is a material consideration in decision-making and, therefore, in the determination of planning applications.

¹ Paragraph: 008. Reference ID: 61-00820190315. Revision date: 15 03 2019.

(3) The Selborne Village Design Statement (SVDS) - Overview

- 3.1 The Selborne Village Design Statement (SVDS) is informed by, and supersedes, the first VDS for Selborne. The first VDS was adopted in 2001 by East Hampshire District Council (EHDC) who, at the time, was the Local Planning Authority (LPA) for the whole of East Hampshire District.
- 3.2 The South Downs National Park (SDNP) was designated as a National Park on 31 March 2010, and the South Downs National Park Authority (SDNPA) became the Local Planning Authority (LPA) for the SDNP on 01 April 2011. The SDNPA is now the sole LPA for Selborne Village and its surrounding area (see Map 1 below).



Map 1: The Selborne VDS boundary area follows the historic Selborne Ward Boundary, but excludes the areas outside of the South Downs National Park (SDNP).

- 3.3 The Selborne Village Design Statement (SVDS) has been informed by:
 - The Selborne Local Landscape Character Assessment (LLCA) [2014];
 - The South Downs Landscape Character Assessment (LCA) [2020];
 - Extensive public engagement and consultation; and
 - The outcomes of previous planning appeal decisions.
- 3.4 The SVDS has used all the above to describe the local landscape character and design of Selborne Village and its immediate surrounding area. In doing so, the SVDS includes **48no. Design Guidelines (DGs)** to help ensure that this local character and design is conserved and enhanced by new development.

(4) The Selborne Village Design Statement (SVDS) – Public Consultations

4.1 The Selborne Village Design Statement (SVDS) has been prepared by volunteers with the support of Selborne Parish Council (SPC). The Selborne VDS Steering Group was formed in September 2014 following a resolution from Selborne Parish Council (SPC). The Group has since carried out a programme of public consultation and engagement to inform the preparation of the SVDS, and its Design Guidelines (DGs). As part of the above, the Group advised the SDNPA that they had:

- Hosted public meetings and an exhibition in 2014 and 2015.
- Distributed a flier to all households about the SVDS in Oct 2014.
- Promoted the Selborne VDS in the parish magazine in Oct and Nov 2014.
- Set up six working groups to prepare specific sections of the SVDS.

4.2 In March 2023, the Draft Selborne Village Design Statement (SVDS) was submitted to the South Downs National Park Authority (SDNPA), so that the SDNPA could carry out formal public consultation in line with the [South Downs Statement of Community Involvement \(SCI\)](#) and the Town and Country Planning (Local Planning) (England) Regulations 2012. The details of, responses to, and actions arising from, the formal public consultations are set out further below.

Spring 2023 - Public Consultation No.1

4.3 The South Downs National Park Authority (SDNPA) undertook an 8-week public consultation of the Draft Selborne Village Design Statement (SVDS) from **11 April to 06 June 2023**. As part of the first consultation, the SDNPA:

- Published the Draft SVDS on its website;
- Displayed a hard copy of the Draft SVDS at its offices; and
- Sent out emails to Statutory Consultees and other interested parties.

4.4 As part of the first consultation, Selborne Parish Council (SPC) advised the SDNPA that they had:

- Displayed a hard copy of the Draft SVDS at their offices; and
- Notified residents through a variety of resources such as, but not necessarily limited to, SPC meetings, SPC website, SPC social media pages, and/or a poster on noticeboards.

4.5 The first consultation received **5no. responses** – see Respondent List in **Table I** below. The issues raised by the respondents, SPC’s response, and how the VDS has been amended in response to the issues raised, are summarised in **Appendix I**.

Respondent Number	Respondent Name / Organisation
R1	Environment Agency
R2	Historic England
R3	National Highways
R4	Southern Water
R5	Natural England

Table 1: List of respondents to the first consultation of the Selborne VDS.

Summer 2023 - Public Consultation No.2

4.6 Selborne Parish Council (SPC) amended the SVDS as per the responses and actions summarised in **Appendix I**. Following re-submission to the South Downs National Park Authority (SDNPA), the SDNPA undertook a 6-week public consultation of the Selborne Village Design Statement (SVDS) from **13 July to 07 September 2023**. As part of the second consultation, the SDNPA:

- Published the SVDS and Consultation Statement on its website;
- Sent out emails to Statutory Consultees and other interested parties; and
- Displayed a hard copy of the SVDS and Consultation Statement at its offices.

4.7 As part of the second consultation, Selborne Parish Council (SPC) advised the SDNPA that they had:

- Displayed a hard copy of the SVDS and Consultation Statement at their offices; and
- Notified residents through a variety of resources such as, but not necessarily limited to, SPC meetings, SPC website, SPC social media pages, and/or a poster on noticeboards.

4.8 The second consultation received **5no. responses**, from 4no. organisations and 1no. resident – see Respondent List in **Table 2** below. The issues raised by the respondents, the SDNPA/SPC response, and how the VDS has been amended in response to the issues raised, are summarised in **Appendix 2**.

Respondent Number	Respondent Name / Organisation
R1	Natural England
R2	National Highways
R3	Environment Agency
R4	Historic England
R5	Resident

Table 2: List of respondents to the second consultation of the Selborne VDS.

Autumn 2023 - SDNPA Review

- 4.9 The SDNPA Planning Policy Team reviewed the SVDS, and the responses received from the second consultation, in November 2023. The Team also liaised internally with Design, Ecology, Heritage, Landscape, and Transport Officers. The SDNPA issued its comments to the SVDS Steering Group on 10 November 2023, 06 December 2023, and 16 January 2024; and met with the SVDS Steering Group on 15 November 2023 and 19 January 2024.
- 4.10 The SDNPA’s main requested changes – beyond factual updates, grammar, written flow, and minor text amendments – were in relation to:
- Defining and illustrating the “green apron”;
 - Amending the boundary map to ensure the SVDS is wholly within the SDNP;
 - Clarifying the differences between “open spaces” and “open areas”;
 - Clarifying the differences between the SVDS and the anticipated CAAMP;
 - Removing the map of settlement over time as it will be captured in the CAAMP;
 - Referring and linking to the “Roads in the South Downs”;
 - The consistent use of Barnfield (Under the Hill) and Burlands Field (Culvercroft);
 - The words and language used in the Design Guidelines (DGs), in recognition that the Selborne VDS will be adopted as an SPD (not a NDP) and so is advisory; and
 - Referring and linking to the South Downs Landscape Character Assessment (LCA) [2020], which has superseded the South Downs Integrated Landscape Character Assessment (SDILCA) [2011].
- 4.11 The Selborne Parish Council (SPC) resolved to make the SDNPA’s requested amendments on 14 December 2023 and 25 January 2024.

Winter 2024 - Public Consultation No.3

- 4.12 The SDNPA was of the view that, due to the nature and number of amendments made through the SDNPA’s own internal review in Autumn 2023, further consultation was required. The SDNPA undertook a further 6-week public consultation of the Selborne Village Design Statement (SVDS) from **01 February to 15 March 2024**. As part of the third consultation, the SDNPA:
- Published the SVDS and Consultation Statement on its website;
 - Sent out emails to Statutory Consultees and other interested parties;
 - Sent out letters to registered landowners of the illustrated “green apron”; and
 - Displayed a hard copy of the SVDS and Consultation Statement at its offices.

4.13 As part of the third consultation, Selborne Parish Council (SPC) advised the SDNPA that they had:

- Notified residents through a variety of resources such as, but not necessarily limited to, SPC meetings, SPC website, SPC social media pages, and/or a poster on noticeboards; and
- Displayed hard copies of the SVDS and Consultation Statement at their offices and other venues in Selborne Village (subject to agreement by individual venues).

4.14 The third consultation received **7no. responses**, from 5no. organisations and 2no. residents – see Respondent List in **Table 3** below. The issues raised by the respondents, the SDNPA/SPC response, and how the SVDS has been amended in response to the issues raised, are summarised in **Appendix 3**.

Respondent Number	Respondent Name / Organisation
R1	Natural England
R2	Resident
R3	National Highways
R4	Environment Agency
R5	Southern Water
R6	Historic England
R7	Resident

Table 3: List of respondents to the third consultation of the Selborne VDS.

Appendix I – Public Consultation No.1 (11 April to 06 June 2023)

The table below sets out the issues raised by respondents to the first consultation of the Selborne Village Design Statement (SVDS), alongside Selborne Parish Council's (SPC) response and how the SVDS has been amended in response to the issues raised.

Respondent Number	Issue raised	SPC response	SPC action
RI	<p>Most of the document falls outside of the remit of the Environment Agency (EA) to comment on and, therefore, we have very few comments to make. However, we are pleased to see the following included within the Design Guidelines:</p> <p>Page 20 – <i>New development and conversions must ensure that habitats for flora and fauna are not compromised and that alternative accommodation for birds and bats and other wildlife is provided where possible.</i></p> <p>Page 33 – <i>Driveways should have a permeable surface to reduce water run-off and help prevent flooding.</i></p>	Acknowledged and the Environment Agency (EA) are thanked for their response.	None.

Respondent Number	Issue raised	SPC response	SPC action
R2	The extent of the design guidelines offers welcome detail, including significant cross referencing to a range of evidence base documents; however, the approach also gives cause to reflect on the role of this document in the evolving landscape of policy and guidance, and how its guidelines will be implemented.	The Levelling Up & Regeneration Bill (LURB) proposed to remove SPDs from the policy framework, in which case the Selborne VDS would not be an SPD. The SDNPA have made representations to the consultation on the LURB and planning reforms to raise concerns with this approach. The VDS will progress to adoption as an SPD and the Design Guidelines will be implemented as a material consideration in the determination of planning applications. If the position regarding SPDs changes, the SDNPA will address this matter.	None.
R2	For a guidance document, it includes several “musts” and some circumstances under which development should be resisted. Presumably the Authority is comfortable that this VDS is indeed compatible with local adopted planning policies as stated on Page 3.	There are a number of Design Guidelines which include the term “must” however, the parish council is not concerned by the use of this term as it is being used in reference to matters which are controlled closely by South Downs Local Plan Policy. It should be noted that the VDS, once adopted, will provide additional detail to the SDNPA Design Guidance and South Downs Local Plan. Therefore, these terms are not an issue.	None.

Respondent Number	Issue raised	SPC response	SPC action
R2	The absence of any reference to design coding implies this is a standalone piece of guidance; however, noting its focus and its “musts” and “should”, might selected content help to inform any future work on a design code for the area? Indeed, we’d be interested to hear from the Authority when the time is right about its interest in and approach to design coding.	Currently, there is no intention to prepare a design code for the entire National Park, but this matter will be considered through the local plan review process. Obviously, a design code is an option for Selborne through the neighbourhood plan process, but that is for the parish to decide. As it stands, the SDNPA encourage VDS to provide local design guidance to supplement the policies of the local plan and the Design SPD.	None.
R2	The VDS identifies several assets that are not designated heritage assets, but which could be non-designated heritage assets (NDHAs). While we’re unaware of the Authority’s work on NDHAs and local listing, there may be benefits from developing a local list that identifies the NDHAs in this area and connects more clearly with the local plan policy on the historic environment.	The Authority are not preparing a NDHA list at this stage. The SDNPA has advised parishes to identify particular assets through NDP or VDS, but are not currently resourced to produce such a list, therefore the SDNPA is content that the identification of other heritage assets in this way is appropriate.	None.
R2	Contents List and Page 5: Selborne’s history pervades the document. But when reviewing the structure outlined in its content list, a casual reader might not grasp the heritage significance of the village. We recommend bringing this to the fore by changing the heading “Background” to a more informative heading such as “Selborne’s character, development and heritage significance”.	Agreed.	VDS modified accordingly.

Respondent Number	Issue raised	SPC response	SPC action
R2	<p>Page 5 (first column): We recommend including a few lines after the third paragraph (which ends “around the village today”) that refers to The Wakes. The RPG makes an important contribution to Selborne’s character and merits early acknowledgement. We offer the following for consideration: “Gilbert White designed and laid out the gardens, parkland, and woodland around his home in the mid-18th century. The designed landscape is a Registered Park & Garden (RPG) known as The Wakes (Grade II*), sharing its name with his former home (listed Grade I and now a museum, as explained on Page 7)”.</p>	Agreed.	VDS modified accordingly.
R2	<p>Page 5 (second column): Reference is made to 30 archaeological sites in and immediately around the village. It is not clear what is meant by a registered site. Does this relate to what is on the Historic Environment Record? Or perhaps it relates to sites where archaeological fieldwork has taken place? We suggest clarifying this point, including the source of this information if appropriate (e.g., for someone wishing to find out more) and perhaps deleting the word “registered”.</p>	Agreed.	VDS modified accordingly.

Respondent Number	Issue raised	SPC response	SPC action
R2	<p>The following sentence would benefit from minor editing: “There are also 44 listed Historic Buildings within Selborne and its immediate environs, and a further 10 Listed Buildings to make a total of 54 listed buildings”. Where are the further 10 buildings? Presumably there are more than 10 other listed buildings in the Parish. Also, a point of pedantry, this sentence contains a mix of “listed Historic Buildings”, “Listed Buildings”, and “listed buildings”. For simplicity and consistency, we suggest “listed buildings”.</p>	Agreed.	VDS modified accordingly.
R2	<p>In the second column, given “The Plestor” is the name of the listed building on its list entry, for extra clarity might the first reference to “The Plestor” be expanded as follows: “A market was held on The Plestor <u>open space</u> from 1271”.</p>	Agreed.	VDS modified accordingly.
R2	<p>Page 6: Could a weblink be included for the Conservation Area Guidance leaflet?</p>	Agreed.	VDS modified accordingly.
R2	<p>Page 6: When referring to the Church, it looks as though the text states Grade 1 rather than Grade I (as is in the convention and used on Page 7).</p>	Agreed.	VDS modified accordingly.
R2	<p>Page 7: It would be helpful to the reader to indicate where the local green spaces are designated – i.e., add a footnote or other reference to the South Downs Local Plan 2014-33 (as is done on Page 30).</p>	Agreed.	VDS modified accordingly.

Respondent Number	Issue raised	SPC response	SPC action
R2	<p>Page 8: To minimise repetition, noting The Wakes collections were mentioned on the prior page, might the text be abridged – e.g., “and Gilbert White’s House, The Wakes, a world famous museum that holds the collections of Gilbert White and also houses the Oates Museum. The Wakes has <u>also includes</u> its café/bistro called White’s”.</p>	Agreed.	VDS modified accordingly.
R2	<p>Page 8: When referring to hollow lanes, it may also merit referring to hollow ways, which connect with terminology on the Historic Environment Record, a source of further information for those who wish to learn more. Perhaps add “sometimes known as hollow lanes or hollow ways” and include a footnote reference to the local Historic Environment Record: https://maps.hants.gov.uk/historicenvironment/</p>	Agreed.	VDS modified accordingly.
R2	<p>Page 9: The second paragraph would benefit from minor editing to handhold the reader. We suggest the following for consideration: “The rural character of the village is typified by views and glimpses of the Hanger between buildings, across gardens and over farm gates. <u>Undermining its appreciation,</u> tThe tangle of overhead <u>utility</u> wires along the High Street, Gracious Street and Kite Hill is intrusive and detrimental to the natural beauty of the landscape.</p>	Agreed.	VDS modified accordingly.

Respondent Number	Issue raised	SPC response	SPC action
R2	Page 9: We welcome the text which underscores the importance of cultural heritage to the economic life of the village.	None.	None.
R2	Page 10: We welcome reference to archaeology and cultural heritage as contributory factors that connect with and shape the local landscape.	None.	None.
R2	<p>Pages 15, 16 and 17: We suggest clarifying the guidance on views & visibility:</p> <ul style="list-style-type: none"> - Key views are identified via the LLCA (reproduced on Page 15) but on Pages 16 and 17 (including in the design guidelines) reference is only made to views identified in SDNPA’s sensitivity analysis. If those views cover what is needed, and we note they are many views identified, might the LLCA views potentially confuse matters? If the LLCA views are retained, their inclusion needs to be referenced in the text. - We are unclear what is meant by “the map on Page 30” in the first bullet of the design guidelines on Page 17. - We are not entirely clear what is meant by “key viewpoints” in the 5th bullet of the design guidelines on Page 17. Are they all viewpoints associated with the views in the SDNPA’s sensitivity analysis? More clarity would help the reader. 	Agreed.	VDS modified accordingly.

Respondent Number	Issue raised	SPC response	SPC action
R2	<p>Page 18: Assuming the RPG is mentioned earlier in the VDS, as advised above, reference to The Wakes in the second paragraph might be amended a little – e.g., “<u>As mentioned above, the gardens, parkland and woodland around Gilbert White’s former home The Park and Gardens to the Wakes, and including the field known as The Punfle, are a Registered Park and Garden (Grade II*) on the National Heritage List for England registered with Historic England as an Historic Park & Garden, Heritage Category Grade II*.</u>” Potentially a footnote could be added that connects to the list entry: https://historicengland.org.uk/listing/the-list/list-entry/1000871</p>	Agreed.	VDS modified accordingly.
R2	<p>Page 20: We suggest a minor change to one of the bullets in the design guidelines on woodlands & trees and biodiversity to acknowledge the overlap between the natural and historic environments: “Trees and hedges should be retained, helping to maintain the enclosed character to the landscape, and to integrate the <u>historic</u> built environment and create wildlife corridors”.</p>	Agreed.	VDS modified accordingly.
R2	<p>Page 21: Might “commonly” be a better term than “vulgarly”?</p>	Agreed.	VDS modified accordingly.

Respondent Number	Issue raised	SPC response	SPC action
R2	<p>Page 26: We welcome the content that connects with the public realm. As the Council may know, a source of relevant advice on development in the public realm is “Streets for All”. The Village Design Statement could include a reference to this advice, if appropriate: https://historicengland.org.uk/images-books/publications/streets-for-all/</p>	Agreed.	VDS modified accordingly.
R2	<p>Pages 29, 31 and 33: Reference is made to Appendix 4, most significantly in the design guidelines on Page 33, but we have not seen an Appendix 4.</p>	Agreed.	VDS modified accordingly.
R3	<p>National Highways is concerned with proposals that have the potential to impact the safe and efficient operation of the Strategic Road Network (SRN), in this case, the A3 Trunk Road. We have reviewed documents available on your planning portal in relation to this consultation and we have “No Comments”.</p>	None.	None.
R4	<p>Southern Water do not provide water supply or wastewater services to Selborne Parish, and therefore have no comment to make.</p>	None.	None.

Respondent Number	Issue raised	SPC response	SPC action
R5	<p>Natural England welcomes design guidelines that respect, and where possible, enhance the character and local distinctiveness of the surrounding natural and built environment; use natural resources more sustainably; and bring benefits for the local community, for example through green space provision and access to, and contact with, nature. The following is offered as general advice which we would expect to have been considered in the preparation of a Town or Village Design Statement.</p>	None.	None.
R5	<p>Landscape – A VDS should recognise and give appropriate consideration to its impact on protected landscapes (i.e., National Parks), and should cross reference Landscape Character Assessments (LCAs) and Local Area LCAs to ensure that the VDS makes a positive contribution in terms of design, form, and location, to the character and functions of the landscape, and avoids unacceptable impacts. Moreover, NE is revising the suite of 159 National Character Area (NCA) profiles to make environmental evidence and information easily available.</p>	None.	None.

Respondent Number	Issue raised	SPC response	SPC action
R5	<p>Green Infrastructure & Sustainable Design – The Design Statement could usefully promote high quality and multifunctional green infrastructure. Natural England’s Green Infrastructure Guidance provides an introduction to delivering green infrastructure at the micro and neighbourhood scale through features such as street trees, green facades and green roofs, where consistent with the local character.</p>	None.	None.
R5	<p>Biodiversity – The VDS should recognise and reference designated wildlife sites (i.e., SACs, SPAs, Ramsar, SSSI, LNR and LWS) and other biodiversity assets in the immediate area, such as protected species, ecological networks, habitats and green spaces. Design guidelines should respect, and where possible, enhance the village’s local and neighbouring biodiversity resources. When preparing the VDS, your local wildlife trust and local environmental record centre should have been consulted, and local and national Biodiversity Action Plans should be referenced where relevant.</p>	None.	None.
R5	<p>Community Engagement – Natural England is keen to see community involvement and the consultation of local people and organisations at the earliest possible stages.</p>	None.	None.

Appendix 2 – Public Consultation No.2 (13 July to 07 September 2023)

The table below sets out the issues raised by respondents to the second consultation of the Selborne Village Design Statement (SVDS), alongside the South Down National Park Authority (SDNPA) response, and how the SVDS has been amended in response to the issues raised.

Respondent Number	Issue raised	SDNPA response	SDNPA action
R1	Natural England welcomes design guidelines that respect, and where possible, enhance the character and local distinctiveness of the surrounding natural and built environment; use natural resources more sustainably; and bring benefits for the local community, for example through green space provision and access to, and contact with, nature. The following is offered as general advice which we would expect to have been considered in the preparation of a Town or Village Design Statement.	Noted.	None.

Respondent Number	Issue raised	SDNPA response	SDNPA action
RI	<p>Landscape – A VDS should recognise and give appropriate consideration to its impact on protected landscapes (i.e., National Parks), and should cross reference Landscape Character Assessments (LCAs) and Local Area LCAs to ensure that the VDS makes a positive contribution in terms of design, form, and location, to the character and functions of the landscape, and avoids unacceptable impacts. Moreover, NE is revising the suite of 159 National Character Area (NCA) profiles to make environmental evidence and information easily available.</p>	<p>The first Selborne VDS was adopted by East Hampshire District Council (EHDC) in 2001, prior to the establishment of the SDNPA in 2011 and the publication of the Selborne Local Landscape Character Assessment (LLCA) in 2014. This updated version of the Selborne VDS uses the Selborne LLCA, the South Downs Landscape Character Assessment (LCA) [2020], and recent planning appeals, to describe the landscape character (incl. built environment) of the village and its immediate surrounding area. In doing so, the VDS includes 48no. Design Guidelines (DGs) to help ensure that this character is conserved and enhanced. The SDNPA has requested that SPC reference the most recent South Downs Landscape Character Assessment (LCA) [2020].</p>	<p>Text amended to appropriately reference the Selborne LLCA, South Downs LCA, and recent appeal decisions.</p>
RI	<p>Green Infrastructure & Sustainable Design – The Design Statement could usefully promote high quality and multifunctional green infrastructure. Natural England’s Green Infrastructure Guidance provides an introduction to delivering green infrastructure at the micro and neighbourhood scale through features such as street trees, green facades and green roofs, where consistent with the local character.</p>	<p>The VDS does not explicitly use Natural England’s GI Guidance. However, the VDS does include a section entitled “Woodland & Trees, Biodiversity & Field Systems”, and a sub-section entitled “Open areas within the village”. These sections broadly capture GI in the form of woodland, trees, and wildlife corridors. The level of reference is considered appropriate for the purposes of a VDS.</p>	<p>None.</p>

Respondent Number	Issue raised	SDNPA response	SDNPA action
R1	Biodiversity – The VDS should recognise and reference designated wildlife sites (i.e., SACs, SPAs, Ramsar, SSSI, LNR and LWS) and other biodiversity assets in the immediate area, such as protected species, ecological networks, habitats and green spaces. Design guidelines should respect, and where possible, enhance the village’s local and neighbouring biodiversity resources. When preparing the VDS, your local wildlife trust and local environmental record centre should have been consulted, and local and national Biodiversity Action Plans should be referenced where relevant.	The VDS recognises, and makes reference to, designated wildlife sites and open areas. In particular, the VDS references the East Hampshire Hangers SAC, the Lythes SSSI, and site-specific areas for SINCs. Please see the sections entitled “Landscape Setting & Water Systems” and “Woodland & Trees, Biodiversity & Field Systems”. In terms of consultation, all statutory consultees were consulted.	None.
R1	Community Engagement – Natural England is keen to see community involvement and the consultation of local people and organisations at the earliest possible stages.	The VDS was subjected to two rounds of public consultation in 2023, and a third (additional) round of public consultation will take place between 01 February and 15 March 2024.	None.
R2	National Highways is concerned with proposals that have the potential to impact the safe and efficient operation of the Strategic Road Network (SRN), in this case, the A3 Trunk Road. We have reviewed this document and we have “No Comments”.	Noted.	None.

Respondent Number	Issue raised	SDNPA response	SDNPA action
R3	<p>Most of the document falls outside of the remit of the Environment Agency (EA) to comment on and, therefore, we have very few comments to make. However, we are pleased to see the following included within the Design Guidelines:</p> <p>Page 20 – <i>New development and conversions must ensure that habitats for flora and fauna are not compromised and that alternative accommodation for birds and bats and other wildlife is provided where possible.</i></p> <p>Page 33 – <i>Driveways should have a permeable surface to reduce water run-off and help prevent flooding.</i></p>	Noted.	None.
R4	Historic England has no further comments on the VDS and appreciate all the work done to address previous comments.	Noted.	None.
R5	Support for the document, and admiration for the work and effort undertaken over a considerable time period. Comment made regarding LGS12 – the field bound by B3006, Cow Lane, Lythe House, and The Grange. The document is inconsistent in its referencing to this field as either “Culverscroft” or “Burlands Field”. The field is known colloquially as Culverscroft, and should be referred to as Culverscroft throughout the document.	There is local discrepancy over whether the field is known colloquially as “Burlands Field” or “Culverscroft”. Please note the removal of the “s” in the latter.	The field is now consistently referred to as “Burlands Field (Culverscroft)”.

Appendix 3 – Public Consultation No.3 (01 February to 15 March 2024)

The table below sets out the issues raised by respondents to the third consultation of the Selborne Village Design Statement (SVDS), alongside the South Down National Park Authority’s (SDNPA) response and how the SVDS has been amended in response to the issues raised.

Respondent Number	Issue raised	SDNPA response	SDNPA action
RI	Natural England welcomes design guidelines that respect, and where possible, enhance the character and local distinctiveness of the surrounding natural and built environment; use natural resources more sustainably; and bring benefits for the local community, for example through green space provision and access to, and contact with, nature. The following is offered as general advice which we would expect to have been considered in the preparation of a Town or Village Design Statement.	Noted.	None.

Respondent Number	Issue raised	SDNPA response	SDNPA action
RI	<p>Landscape – A VDS should recognise and give appropriate consideration to its impact on protected landscapes (i.e., National Parks), and should cross reference Landscape Character Assessments (LCAs) and Local Area LCAs to ensure that the VDS makes a positive contribution in terms of design, form, and location, to the character and functions of the landscape, and avoids unacceptable impacts. National Park and AONB Management Plans can also provide useful information for design statements within protected landscapes. NE is revising the suite of 159 National Character Area (NCA) profiles to make environmental evidence and information easily available.</p>	<p>The VDS has been informed by: the first Selborne VDS [2001], the Selborne Local Landscape Character Assessment (LLCA) [2014]; the South Downs Landscape Character Assessment (LCA) [2020]; recent planning appeals; and public consultation and engagement. In using all the above, the VDS describes the distinctive and local landscape character of the village and its immediate surrounding area, and includes 48no. Design Guidelines (DGs) to help ensure that this character is conserved and enhanced.</p>	None.
RI	<p>Green Infrastructure & Sustainable Design – The Design Statement could usefully promote high quality and multifunctional green infrastructure. Natural England’s Green Infrastructure Guidance provides an introduction to delivering green infrastructure at the micro and neighbourhood scale through features such as street trees, green facades and green roofs, where consistent with the local character.</p>	<p>The VDS does not explicitly use Natural England’s GI Guidance. However, the VDS and its Design Guidelines (DGs) aim to conserve and enhance green infrastructure (GI) assets. This includes, but is not limited to: the retention and integration of woodland and trees to help create wildlife corridors; and the protection and enhancement of linear woods associated with sunken lanes as important wildlife corridors. The level of reference is considered appropriate for the purposes of a VDS.</p>	None.

Respondent Number	Issue raised	SDNPA response	SDNPA action
R1	<p>Biodiversity – The VDS should recognise and reference designated wildlife sites (i.e., SACs, SPAs, Ramsar, SSSI, LNR and LWS) and other biodiversity assets in the immediate area, such as protected species, ecological networks, habitats and green spaces. Design guidelines should respect, and where possible, enhance the village’s local and neighbouring biodiversity resources. When preparing the VDS, your local wildlife trust and local environmental record centre should have been consulted, and local and national Biodiversity Action Plans should be referenced where relevant.</p>	<p>The VDS recognises, and makes reference to, environmental designations, species, and open areas. In particular, the VDS references the East Hampshire Hangers SAC, the Lythes SSSI, and site-specific areas for SINCs. The Design Guidelines (DGs) aim to conserve and, where possible, enhance biodiversity resources and wildlife corridors (incl. hedges, trees, woodlands etc) and, where possible, create new ones to enable biodiversity to thrive and prosper. As for consultation, all statutory consultees were consulted during all three public consultations.</p>	None.
R1	<p>Community Engagement – Natural England is keen to see community involvement and the consultation of local people and organisations at the earliest possible stages.</p>	<p>The VDS has been subjected to three rounds of public consultation. This meets and exceeds the minimum requirements set out in the Town and Country Planning (Local Planning) (England) Regulations 2012 and the South Downs Statement of Community Involvements (SCI).</p>	None.
R2	<p>The document is good and the time, expertise and hard work that has gone into it is commended.</p>	<p>Thank you for your comments.</p>	None.

Respondent Number	Issue raised	SDNPA response	SDNPA action
R2	Please can the page numbers be kept to the same side and position on each page throughout the document.	The page numbers when viewed in digital format alternate between the left and right hand side of the page. This formatting allows the numbers to be in the correct position – i.e., on the outside of the page – when the document is printed off as double-sided. As such, the current format – i.e., as included in the consultation version of the document – will be retained.	No action.
R2	Please can the footnote numbers be in a smaller font throughout the document as they can be easily confused with page numbers – i.e., Page 24 and Footnote 18, and Page 26 and Footnote 19.	The font size of the footnote numbers has been reduced, but the font size of the footnote text has been retained for ease of reading.	Reduce font size of footnote numbers.

Respondent Number	Issue raised	SDNPA response	SDNPA action
R2	<p><u>Page 26, final paragraph:</u> Please can the reference to a footpath across Barnfield be deleted for the following reasons:</p> <ul style="list-style-type: none"> • The route has not been used at all since 2014. • A wildflower / wildlife meadow is being created in the first part of the field. • Management of trees and hedges (incl coppicing) is also underway with advice/help. • A public footpath across the field would put this project, and the newly emerging biodiversity of the field, in jeopardy. • The VDS incorrectly implies the route across Barnfield is the only southern link between the Hangers Way, Selborne Common and the village. • The Hangers Way runs directly into the heart of the village via Plum Fell Lane to Selborne Arms. • Footpath 205/18/1 runs directly along the other side of Barnfield from B3006 to Hangers Way. • Footpaths 205/10b/3, 205/13/5, and 205/18/3 all directly link the village and Hangers Way with Selborne Common. 	<p>Delete:</p> <p>“An application was made in 2013 for the formal designation of a habitually used footpath across Barnfield. This links the southern end of the village to the Hangers Way and Selborne Common; its confirmation by Hampshire County Council would be of great benefit”.</p> <p>Please note, deletion of the above from the SVDS will have no bearing on whether Hampshire County Council (HCC) formally designate the referenced habitually used footpath or not.</p>	Delete last two sentences of the paragraph.

Respondent Number	Issue raised	SDNPA response	SDNPA action
R2	It is incorrect to describe Goslings Croft Allotment as POS. The allotments are not open to the public. The land is privately owned and leased to the parish council who rents each allotment to individuals. Please can this reference therefore be deleted.	The SDNPA is currently preparing an Open Space (OS) Assessment to inform its Local Plan Review (LPR). Community food growing (i.e., allotments, orchards etc.) is a recognised typology of open space (OS). The document has been amended throughout so it is clear when the document is referring to “open spaces” and wider “open areas”.	Amend “Public Open Spaces” and “POS” to “Open Spaces (OS)” and “OS” respectively on p14 and p29. Amend references to “open spaces” and “open areas” throughout the document as appropriate.
R3	National Highways has reviewed the document and has “No Comments”.	Noted.	None.

Respondent Number	Issue raised	SDNPA response	SDNPA action
R4	<p>Environment Agency has confirmed that most of the document falls outside of its remit to comment on and, therefore, has very few comments to make. However, it is pleased to see the following included within the Design Guidelines:</p> <p>Page 20 – <i>New development and conversions must ensure that habitats for flora and fauna are not compromised and that alternative accommodation for birds and bats and other wildlife is provided where possible.</i></p> <p>Page 33 – <i>Driveways should have a permeable surface to reduce water run-off and help prevent flooding.</i></p>	Noted.	None.
R5	Southern Water has reviewed its service area maps and confirms that it does not provide water or wastewater services to Selborne village, and therefore has no comments to make.	Noted.	None.
R6	Historic England has no further comments on the VDS and appreciate all the work done to address previous comments.	Noted.	None.
R7	Fully support the SVDS and hope it will be adopted.	Thank you for your comments.	None.

Respondent Number	Issue raised	SDNPA response	SDNPA action
R7	<p>Footnote 1 (p3) states that the name “Burlands Field (Culvercroft)” will be used throughout this document”. The field is not only known as Culvercroft but has been since at least 1842 (see “Field Names 1842” on p16). It is a matter of considerable regret that in a Selborne-specific document, the historic name of the field is not given primacy over one that has only recently, in planning applications, been referred to as Burlands Field, the name of an adjacent field (also shown on the 1842 map). If there is a specifically identified reason why the field cannot be named solely as Culvercroft, I thoroughly urge that the field should then be referred to as “Culvercroft (Burlands Field)” throughout the VDS.</p>	<p>The site is referred to by two names, one colloquial and the other historical. These are Burlands Field and Culvercroft respectively. Both of these names have been used in a number of planning documents, although the order and spelling has differed amongst them. Please see planning application ref. SDNP/13/02650/OUT, planning appeal refs SDNP/13/00054/REF and APP/Y9507/A/13/2204544, South Downs SHLAA ref. EA087, and South Downs LGS Assessment ref. LGS12/LGS50.</p> <p>The resident’s preference is for the historic name of Culvercroft. It is important to remember that the SVDS will be adopted as a Supplementary Planning Document (SPD) - a planning document. The SVDS will be used by a wide audience, including applicants, developers, planners, and residents. The above includes both local people and those from slightly further afield. In order to avoid ambiguity, and to ensure that the SVDS is used effectively to inform planning proposals and decisions, the site’s name will be amended to “Culvercroft (Burlands Field)” to capture the site’s planning and wider history.</p>	<p>Rename “Burlands Field (Culvercroft)” to “Culvercroft (Burlands Field)”.</p>