



The Town and Country Planning (Local Planning) (England) Regulations 2012

Adoption Statement

NOTICE IS HEREBY GIVEN THAT ON 11 APRIL 2024 THE SOUTH DOWNS NATIONAL PARK AUTHORITY ADOPTED THE SELBORNE VILLAGE DESIGN STATEMENT AS A SUPPLEMENTARY PLANNING DOCUMENT (SPD)

Title: Selborne Village Design Statement Supplementary Planning Document.

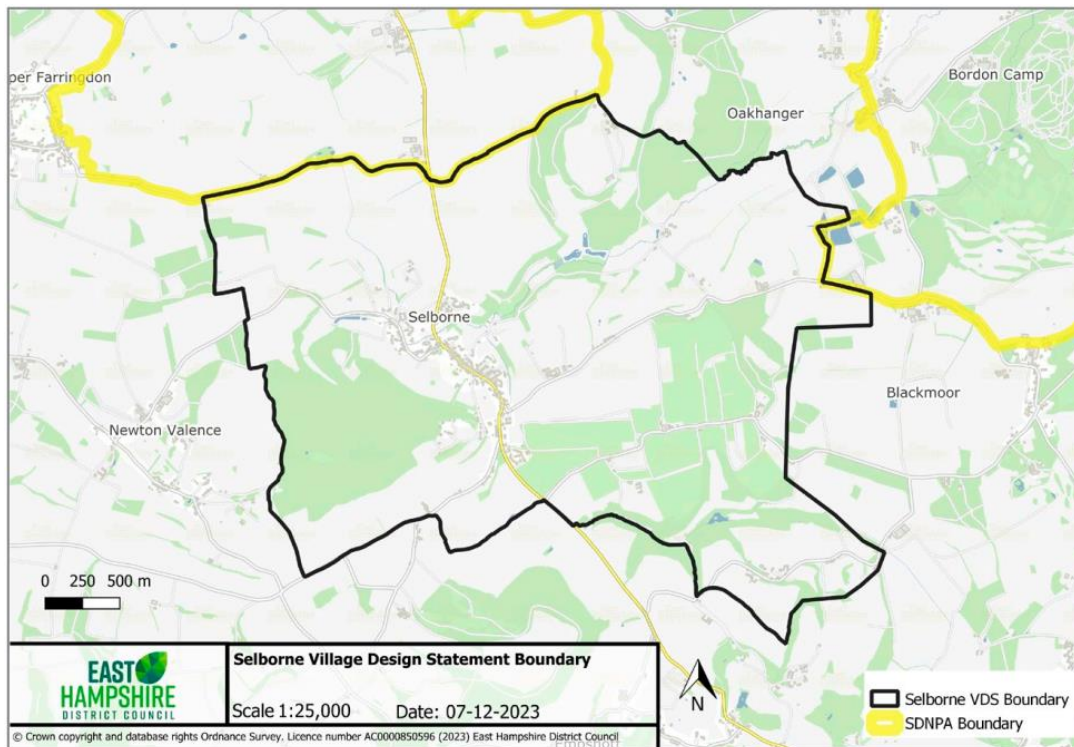
Subject matter: The SPD sets out a framework of guidelines and principals relating primarily to design matters against which future planning applications will be assessed.

Area: The SPD applies only to the village of Selborne and its surrounding countryside as shown in Map 1 below.

Date of adoption: 11 April 2024

Grievances: Any person aggrieved by the Supplementary Planning Document (SPD) may apply to the High Court for permission to apply for judicial review of the decision to adopt the SPD. Any such application must be made promptly and in any event not later than 3 months after the date on which the SPD was adopted.

Selborne Village Design Statement Boundary



Map 1: The Selborne Village Design Statement boundary follows the historic Selborne Ward boundary, but excludes the areas outside of the South Downs National Park (SDNP).