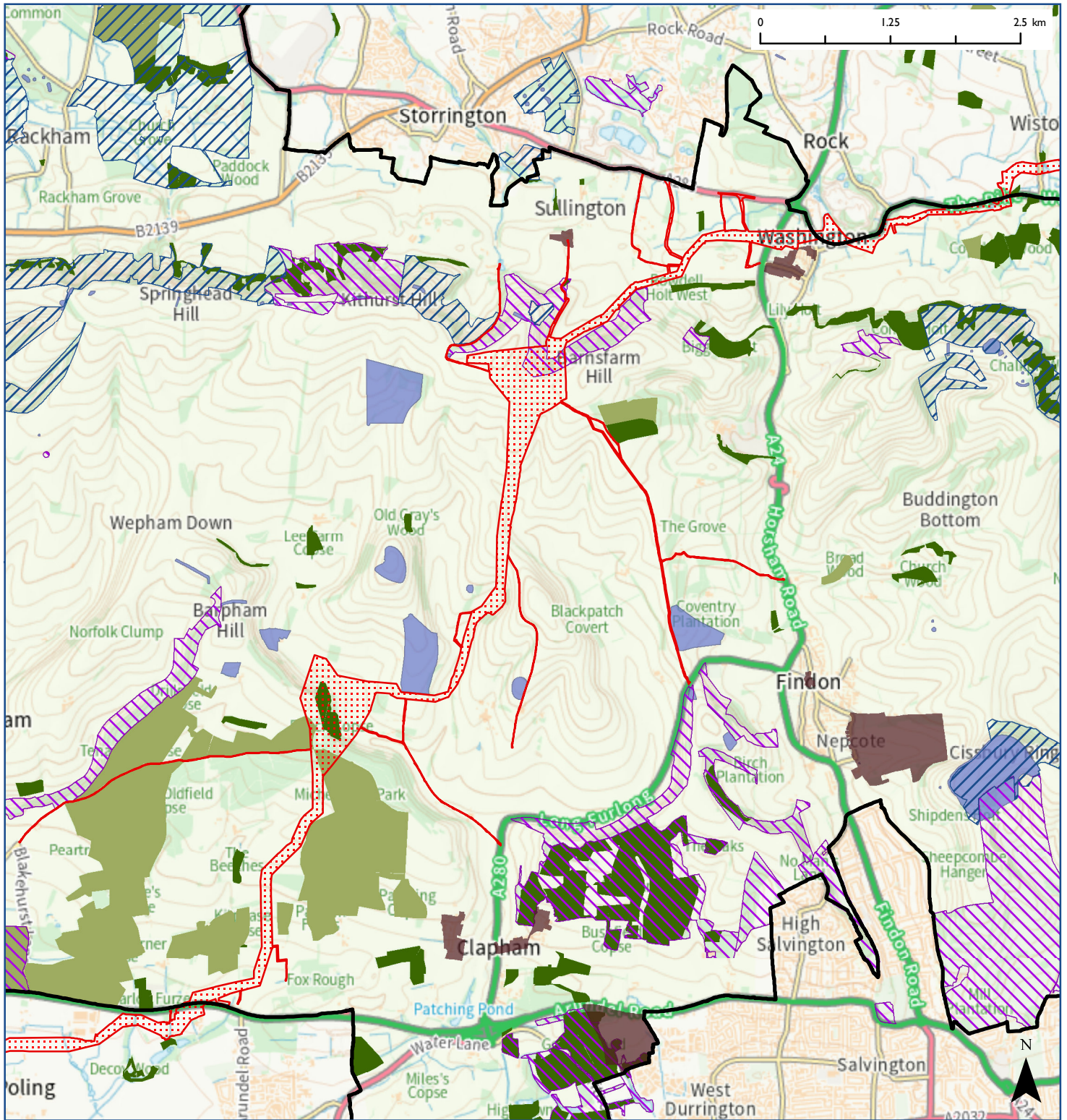


**Rampion 2 Submitted Onshore Corridor  
in the South Downs National Park**



© Crown copyright and database rights 2023 Ordnance Survey 100050083  
© Natural England; Historic England; SxBRC

Scale at A4 1:52,500

- |  |                                      |   |                                 |
|--|--------------------------------------|---|---------------------------------|
|  | South Downs National Park boundary   |  | Local Wildlife Sites            |
|  | Rampion 2 Submitted Onshore Corridor |  | Scheduled Monument              |
|  | Conservation Area                    |  | Ancient & Semi-Natural Woodland |
|  | Sites of Special Scientific Interest |  | Ancient Replanted Woodland      |

