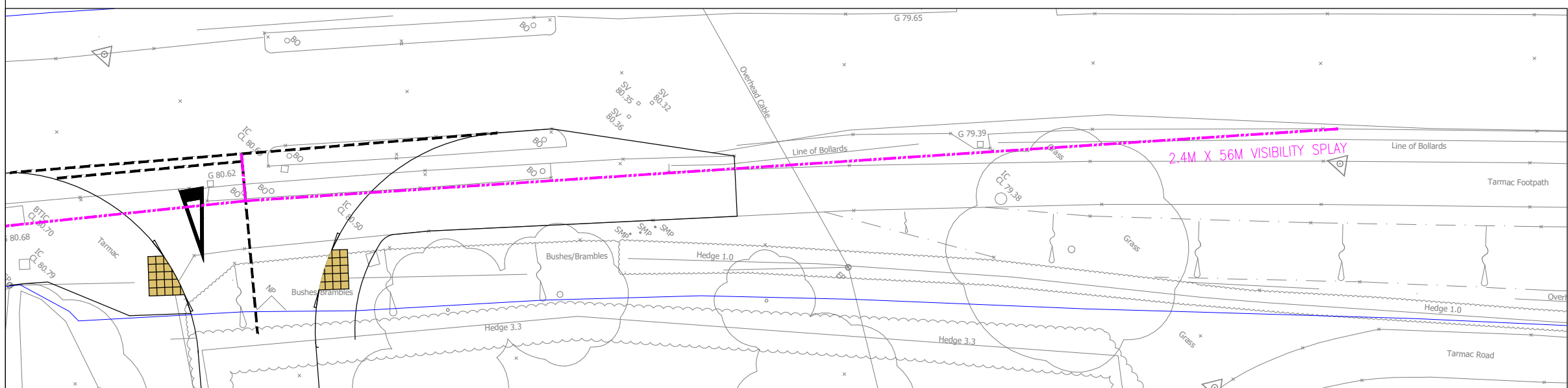


USING SPEED SURVEY 16.07.20 - 59.5KPH (WITHOUT APPLYING WET WEATHER SPEEDS)
LIGHT VEHICLES = 56M

GENERAL NOTES

1. THIS DRAWING IS INTENDED TO BE VIEWED IN COMBINATION WITH ALL RELEVANT ARCHITECTS, ENGINEERS, SERVICES AND SPECIALIST DRAWINGS AND SPECIFICATION.
2. ANY VARIATIONS OR DISCREPANCIES BETWEEN THESE DRAWINGS IN TERMS OF DIMENSIONS OR DETAILS SHOULD BE DRAWN TO THE ATTENTION OF THE ARCHITECT AND/OR THE ENGINEER FOR CLARIFICATION.
3. PAUL BASHAM ASSOCIATES ACCEPTS NO RESPONSIBILITY FOR THE ACCURACY OF BACKGROUND INFORMATION PRODUCED BY THIRD PARTIES - THIS MUST BE TREATED AS INDICATIVE ONLY.
4. ALL DIMENSIONS AND LEVELS ARE IN METRES. DO NOT SCALE THIS DRAWING, PRINT, PLOT OR DISK.
5. THIS DRAWING SHOULD ONLY BE USED FOR CONSTRUCTION IF THE PROJECT PHASE IN THE TITLE FRAME BELOW IS SHOWN AS "CONSTRUCTION". PAUL BASHAM ASSOCIATES TAKE NO RESPONSIBILITY FOR CONSTRUCTION WORKS UNDERTAKEN TO DRAWINGS WHICH ARE NOT MARKED UNDER THIS PHASE.

VERTICAL VISIBILITY SPLAY IN THE PRIMARY DIRECTION TO 56M FROM 1.05M TO 600MM

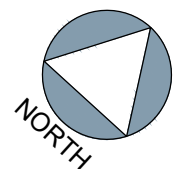


VISIBILITY SPLAYS

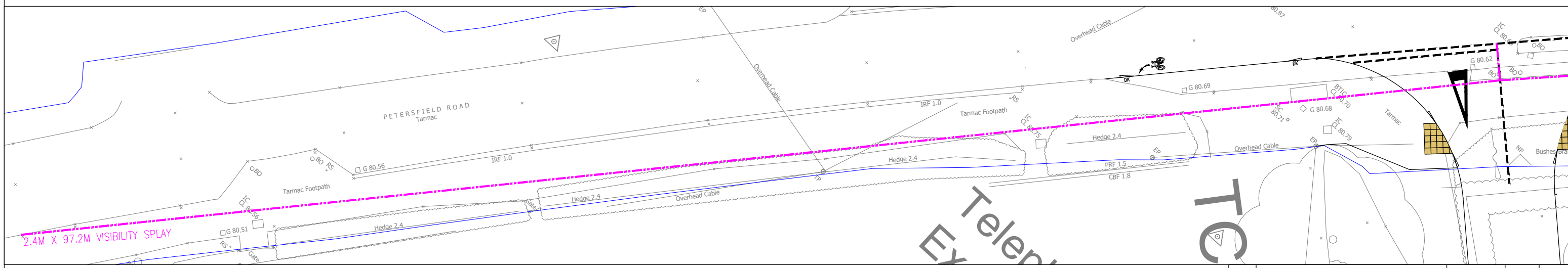
1. PRIMARY DIRECTION VISIBILITY SPLAY IS BASED ON THE RECORDED 85%ILE SPEEDS OF 37MPH SOUTHBOUND ON PETERSFIELD ROAD. SURVEY COMPLETED 16.07.20 SOUTHBOUND DIRECTION ONLY ON PETERSFIELD ROAD.
2. SECONDARY DIRECTION VISIBILITY SPLAY IS BASED ON THE RECORDED 85%ILE SPEEDS OF 38.5MPH FROM A SPEED SURVEY UNDERTAKEN BETWEEN 14.07.17-22.07.17 ON PETERSFIELD ROAD.

KEY:

INDICATIVE HIGHWAY BOUNDARY



HORIZONTAL VISIBILITY SPLAY IN THE PRIMARY DIRECTION TO 56M



HORIZONTAL VISIBILITY SPLAY IN THE SECONDARY DIRECTION TO 97.2M

Rev	Description	Date	By	Chkd
A	UPDATES BASED ON HCC COMMENTS	06.08.20	JL	MS

Project Name LISS FOREST NURSERY GREATHAM	Title ACCESS VISIBLY SPLAYS	paulbasham associates Paul Basham Associates Ltd The Botly, Cams Hall Estate, Fareham, PO16 8UT 01329 711 000 info@paulbashamassociates.com www.pau.bashamassociates.com	Client COVE HOMES	Checked By MS	Checked Date 17.07.20	Scale 1:250	(AT A3 SIZE)		
Project Phase PRELIMINARY				Drawn By JL	Drawn Date 17.07.20	Client Drawing No. -	PBA Drawing No. 096.0004.014	Revision A	