



Gypsy, Traveller and Travelling Showpeople Background Paper

2022 Update

South Downs Local Plan

March 2022

This page has been left intentionally blank



Revisions

Version	Updates
1 ¹	First published 2016
2	Revise status of Warren Barn 01 December 2016
3 ²	Update to incorporate new GTAAs and planning permissions, February 2018
4	Update to incorporate new GTAAs and planning permissions, February 2022 (this version)

¹ SDNPA, Gypsy, Traveller and Travelling Showpeople Background Paper 2016 - <https://www.southdowns.gov.uk/wp-content/uploads/2017/02/Gypsy-Traveller-and-Travelling-Showpeople-Background-Paper-Appendices.pdf> SUPERSEDED

² SDNPA, Gypsy, Traveller and Travelling Showpeople Background Paper 2018 Update - <https://www.southdowns.gov.uk/wp-content/uploads/2018/04/TSF-14-Gypsy-Traveller-Background-Paper.pdf> SUPERSEDED



Contents

Chapter		Page No.
1.	Introduction & Frequently Asked Questions	4
2.	Background to the South Downs National Park	5
3.	Purpose of this assessment	6
4.	Legislative background	7-9
5.	Planning Policy for Gypsy and Travellers – South Downs Local Plan	10-11
6.	Existing provision of Gypsy and Traveller sites within the South Downs National Park at 1st October 2021	12-13
7.	The updated GTAAs since the adoption of the SDLP	14-17
8.	Meeting the Needs	18-21
9.	Recent applications	22-24
10.	Recent appeals	25-27
<i>Appendices:</i>		
A.	Frequently asked questions	
B.	Link to all GTAAs	
Glossary		



I. Introduction

- I.1 This background paper brings together the results of a number of studies completed in recent years across the National Park in relation to Gypsies, Travellers and Travelling Showpeople sites.
- I.2 This background paper does not allocate or assess any sites for allocation. Instead, it updates the information provided in the South Downs Local Plan (SDLP) and its Background Paper on Gypsies, Travellers and Travelling Showpeople³. This information comes from Gypsy and Traveller Accommodation Assessments (GTAA) published by our neighbouring local authorities, which were done either by single authorities or in partnership with others. Information is also provided on newly permitted site including appeals.
- I.3 The study has a base date of the 10 March 2022.
- I.4 It should be noted that although the South Downs National Park Authority is the local planning authority for the National Park, we are not the housing authority. This is a function carried out by the local authorities in which the National Park is located. Housing need including the housing need of Gypsies, Travellers and Travelling Showpeople is a key cross boundary strategic issue for the SDNPA and requires close partnership working. We have worked with our neighbours on the preparation of this document.
- I.4 The FAQ's will help to direct you to key areas within the study and they are set out in Appendix A. Links to all the GTAA's carried out within the SDNPA are set out in Appendix B.
- I.5 There is a glossary on the final page of the document.

³ SDNPA, 2018, Gypsy, Traveller and Travelling Showpeople Background Paper - <https://www.southdowns.gov.uk/wp-content/uploads/2018/04/TSF-14-Gypsy-Traveller-Background-Paper.pdf>



2. Background to the South Downs National Park

- 2.1 The South Downs National Park (SDNP) covers an area of over 1,600 km², with 15 local authorities operating within the area. The South Downs National Park Authority (SDNPA) became the local planning authority for the National Park on 01 April 2011.
- 2.2 As a local planning authority, the National Park Authority is required by the National Planning Policy Framework (NPPF) to prepare a Local Plan that sets out how the SDNPA will manage development over the next 15 years. This is based on the statutory purposes for national parks as specified in the Environment Act 1995:
 1. To conserve and enhance the natural beauty, wildlife and cultural heritage of the area.
 2. To promote opportunities for the understanding and enjoyment of the special qualities of the national park by the public.
- 2.3 The SDNPA also has a duty when carrying out the purposes to seek to foster the economic and social well-being of the local communities within the National Park. This includes Gypsies, Travellers and Travelling Showpeople.
- 2.4 In addition, Section 62 of the Environment Act 1995 also requires all relevant authorities, including statutory undertakers and other public bodies, to have regard to these purposes.
- 2.5 The South Downs was designated as a national park in recognition of its landscapes of exceptional beauty and importance. Therefore, it is entirely appropriate to take a landscape led approach to the formulation of its Local Plan. The National Planning Policy Framework (NPPF) states that great weight should be given to conserving landscape and scenic beauty in national parks, which have the highest status of protection in relation to landscape and scenic beauty along with the Broads and Areas of Outstanding Natural Beauty (AONB). Consequently, the landscape impact of any proposed Gypsy and Traveller site is a fundamental consideration.
- 2.6 As with all local planning authorities it is necessary for the SDNPA to consider the need for Gypsy and Traveller sites across the National Park. It should be noted that the National Park boundary does not reflect any administrative or standard boundary as the designation is landscape based. It is therefore inherently problematic to compile any socio-economic data sets specifically for the National Park area or any of its constituent parts.



3. Purpose of this Assessment

3.1 The purposes of this paper are to:

- a) Identify existing provision for Gypsies and Travellers across the SDNP including authorised and unauthorised sites.
- b) Update current needs data to take account of recent permissions and the results of the various studies looking at the need for Gypsies, Travellers and Travelling Showpeople.

3.2 This background paper will provide case officers and local communities an update on provision and need throughout the National Park. There have been several updated GTAA's published since the adoption of the SDLP in July 2019. We wanted to bring together all of these updates in one document. Table 8.2 in section 8 of this report shows the areas of the National Park with updated GTAA

3.3 This document will also be helpful in any forthcoming review of the SDLP.



4. Legislative Background⁴

- 4.1 The planning definition for a Gypsy, Traveller or Travelling Showperson is set out in the [Planning Policy for traveller sites 2015 \(PPTS\)](#). The previous definition set out in the [Housing Act 2004](#), was repealed by the [Housing and Planning Act 2016](#).

The Planning Definition in the PPTS (2015):

- 4.2 For the purposes of the planning system, the definitions were changed in the PPTS (2015). The planning definition (extracted) are stated in Annex one (Glossary) of the PPTS

For Gypsies and travellers:

“Persons of nomadic habit of life whatever their race or origin, including such persons who on grounds only of their own or their family’s or dependants’ educational or health needs or old age have ceased to travel temporarily, but excluding members of an organised group of travelling showpeople or circus people travelling together as such.”

- 4.3 In determining whether persons are “gypsies and travellers” for the purposes of this planning policy, consideration should be given to the following issues amongst other relevant matters:

- a) Whether they previously led a nomadic habit of life;
- b) the reasons for ceasing their nomadic habit of life;
- c) whether there is an intention of living a nomadic habit of life in the future, and if so, how soon and in what circumstances.

- 4.4 For the purposes of this planning policy, “travelling showpeople” means:

“Members of a group organised for the purposes of holding fairs, circuses or shows (whether or not travelling together as such). This includes such persons who on the grounds of their own or their family’s or dependants’ more localised pattern of trading, educational or health needs or old age have ceased to travel temporarily, but excludes Gypsies and Travellers as defined above.”

- 4.5 The main change that was made to both definitions, paragraph 4.2 and 4.4 above, was the removal of the term “...who have ceased to travel permanently.” Therefore, those who do not travel permanently will no longer fall under the planning definition

⁴ Chapter 4 – Planning Policy for Traveller Sites, Department for Communities and Local Government (DCLG) August 2015 -

https://assets.publishing.service.gov.uk/government/uploads/system/uploads/attachment_data/file/457420/Final_planning_and_travellers_policy.pdf



of a Gypsy or a Traveller⁵. This is particularly of importance when assessing accommodation need in a GTAA.

- 4.6 The 2015 guidance superseded the 2012 guidance. Local Authorities across the National Park have been updating their needs assessment that feed into the update to this background paper. This is supplemented with officer knowledge of the families across the National Park and their individual personal circumstances. Along with information contained in planning applications and appeals.

Legislation and Guidance

- 4.7 Other planning policy and guidance for Gypsies, Travellers and Travelling Showpeople should also be read in conjunction with the PPTS 2015, above, Local Plan policy and Neighbourhood Plan policy (if relevant). Local Plan policy for Gypsy, Travellers and Travelling Showpeople is presented in Chapter 5 of this paper.

- 4.8 The key pieces of legislation and Government policy/guidance on Gypsies and Travellers are:

- Planning policy for Traveller Sites, 2015
- The Housing and Planning Act, 2016
- [National Planning Policy Framework](#)⁶ (NPPF), 2021
- Planning Practise Guidance (PPG), 2019, Housing needs of Different groups⁷, paragraph 001
- Caravan Sites and Control of Development Act, 1960⁸
- [The Human Rights Act](#)⁹, 1998
- [The Environment Act](#)¹⁰, 1995

- 4.9 The NPPF was last updated in 2021. Paragraph 62 (2021) states;

“Within this context, the size, type and tenure of housing needed for different groups in the community should be assessed and reflected in planning policies (including, but not limited to, those who require affordable housing, families with children, older people, students, people with disabilities, service families, travellers, people who rent their homes and people wishing to commission or build their own homes.)”

⁵ For the purposes of this planning policy, “travellers” means, “gypsies and travellers” and “travelling showpeople” as defined by the PPTS 2015.

⁶ National Planning Policy Framework (NPPF) 2019 -

https://assets.publishing.service.gov.uk/government/uploads/system/uploads/attachment_data/file/1005759/NPPF_July_2021.pdf

⁷ National Planning Practise Guidance, 2021, Housing needs of different groups -

<https://www.gov.uk/guidance/housing-needs-of-different-groups>

⁸ Caravan Sites and Control of Development Act, 1960 - <https://www.legislation.gov.uk/ukpga/Eliz2/8-9/62>

⁹ The Human Rights Act, 1998 - <https://www.legislation.gov.uk/ukpga/1998/42/contents>

¹⁰ The Environment Act, 1995 - <https://www.legislation.gov.uk/ukpga/1995/25/contents>



Planning for the Future – White Paper 2020¹¹

- 4.10 In August 2020 the Government published a planning [White Paper](#) that presented proposals to reform the current planning system in England. This particular consultation did not specifically mention any changes or updates to planning policy for gypsies and travellers.

¹¹ Ministry of Housing, Communities and Local Government (MHCLG), Planning for the Future White Paper 2020 - https://assets.publishing.service.gov.uk/government/uploads/system/uploads/attachment_data/file/958420/MHCLG-Planning-Consultation.pdf



5. Planning Policy for Gypsy and Travellers – South Downs Local Plan: Policy SD33: Gypsies, Travellers and Travelling Showpeople

- 5.1 The [South Downs Local Plan](#) (SDLP)¹² was adopted in July 2019. The SDLP is the first local plan to cover the National Park in its entirety and establishes the strategic planning policy framework for the National Park. It is a landscape led plan that seeks to deliver multiple ecosystem services and sets out how the Authority will manage development over the next 15 years.
- 5.2 Policy SD33: Gypsies, Travellers and Travelling Showpeople presents four criteria:
- Safeguard permanent lawful sites
 - Establishes the need for new sites
 - Sets out criteria for applications
 - The SDLP notes that it is important to address the housing need for all people within the community. This includes the needs of Gypsies, Travellers and Travelling Showpeople.
- 5.3 When the SDLP was written there were 45 existing permanent pitches for gypsies and travellers, 30 transit pitches and 4 plots for travelling showpeople with a base date of 01 October 2018.
- 5.4 The SDLP was evidenced by six GTAA's. Recognising the cross boundary nature of the assessments, the SDNPA worked in partnership with all the local authorities involved. The SDNPA continues to work proactively after the adoption of the SDLP on all of the assessments that are drafted by our neighbouring authorities.
- 5.5 The outcome of the work that supplemented the SDLP Policy SD33, is that the SDNP was not able to identify sufficient sites to meet the entire identified need for of 25 pitches for Gypsies, Travellers and Travelling Showpeople. This emphasises the need for cross boundary working with our neighbouring authorities and up to date evidence.

Policy SD33: Gypsies, Travellers and Travelling Showpeople

- 5.6 Part 2 of the policy presents the need of Gypsies, Travellers and Travelling Showpeople. This will be met by the allocation of permanent pitches and granting planning permission on currently unidentified sites. The need is set out as follows:
- 13 pitches in that part of the National Park located in Brighton and Hove;
 - 6 pitches in that part of the National Park located in Lewes District;

¹² SDNPA, South Downs Local Plan (SDLP), Adopted 2 July 2019 - https://www.southdowns.gov.uk/wp-content/uploads/2019/07/SD_LocalPlan_2019_17Wb.pdf



- 6 pitches in that part of the National Park located in East Hampshire District.

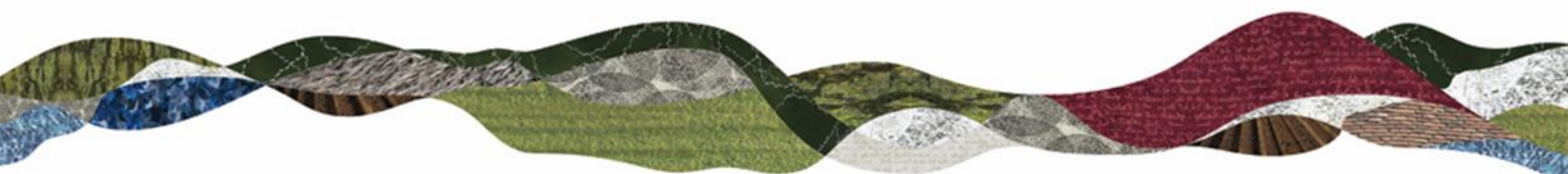
5.7 Figure 7.4 of the Local Plan presents a summary of the Local Plan allocations and permanent need within the National Park for Gypsies, Travellers and Travelling Showpeople. An updated version of the table is set out in Figure A of this document.

5.8 **Figure 5.8: Summary of need, allocations and unmet need for Gypsies & Travellers in the South Downs. The base date is 1 October 2018.**

Area (within National Park)	Permanent Gypsies & Travellers' pitch need	Permanent Showpersons' plot need	Allocations in the Local Plan	Remaining unmet need
Brighton & Hove	13	0	0	13 Gypsy and Traveller
Coastal West Sussex (Adur, Arun, Chichester, Worthing)	0	0	0	0
Horsham	0	0	0	0
Mid Sussex	0	0	0	0
East Sussex: Lewes, Eastbourne, Wealden)	6	0	5	1 Gypsy and Traveller
East Hampshire	4	9	5 (Gypsy and Travellers)	9 Travelling Showpeople
Winchester	0	0	0	0
Total	23	9	10	14 Gypsy and Travellers 9 Travelling Showpeople

5.9 In addition, paragraph 7.116 of the SDLP notes that need for eight transit pitches in the East Sussex area.

5.10 Since the adoption of the SDLP, the Authority has been working towards to meet the needs as set out in part 2 above. The update to the unmet needs figures will be presented in Section 8, table 8.2 and paragraphs 8.2 – 8.7 of this report.



6. Current provision of gypsy and traveller sites within the National Park at 01 October 2021

6.1 Table 6.2 below shows a summary of the gypsy, traveller and travelling showpeople sites across the National Park as of 01 October 2021. There is an increase of five pitches since 01 March 2018, which is the base date of the previous Background paper. The increase in permanent pitches and the reduction in temporary, is due to those temporary pitches being made permanent. There has been no change in the authorised transit pitches or plots for Travelling Showpeople.

6.2 **Table 6.2: Existing gypsy, traveller and travelling showpeople sites in the SDNP at 01 October 2021**

	Permanent	Temporary	Notes
Authorised gypsy and traveller pitches	53 (plus any other apps)	0	The increase in 5 permanent pitches came from the 5 temporary pitches identified in the 2018 background paper. 2 pitches at Fern Farm (EHDC), 2 pitches at Half Acre (EHDC) and 1 at The Pump House (Lewes).
Authorised gypsy and traveller transit pitches	30	0	No change since the 2018 background paper.
Authorised travelling showpeople plots	4	0	No change since the 2018 background paper.

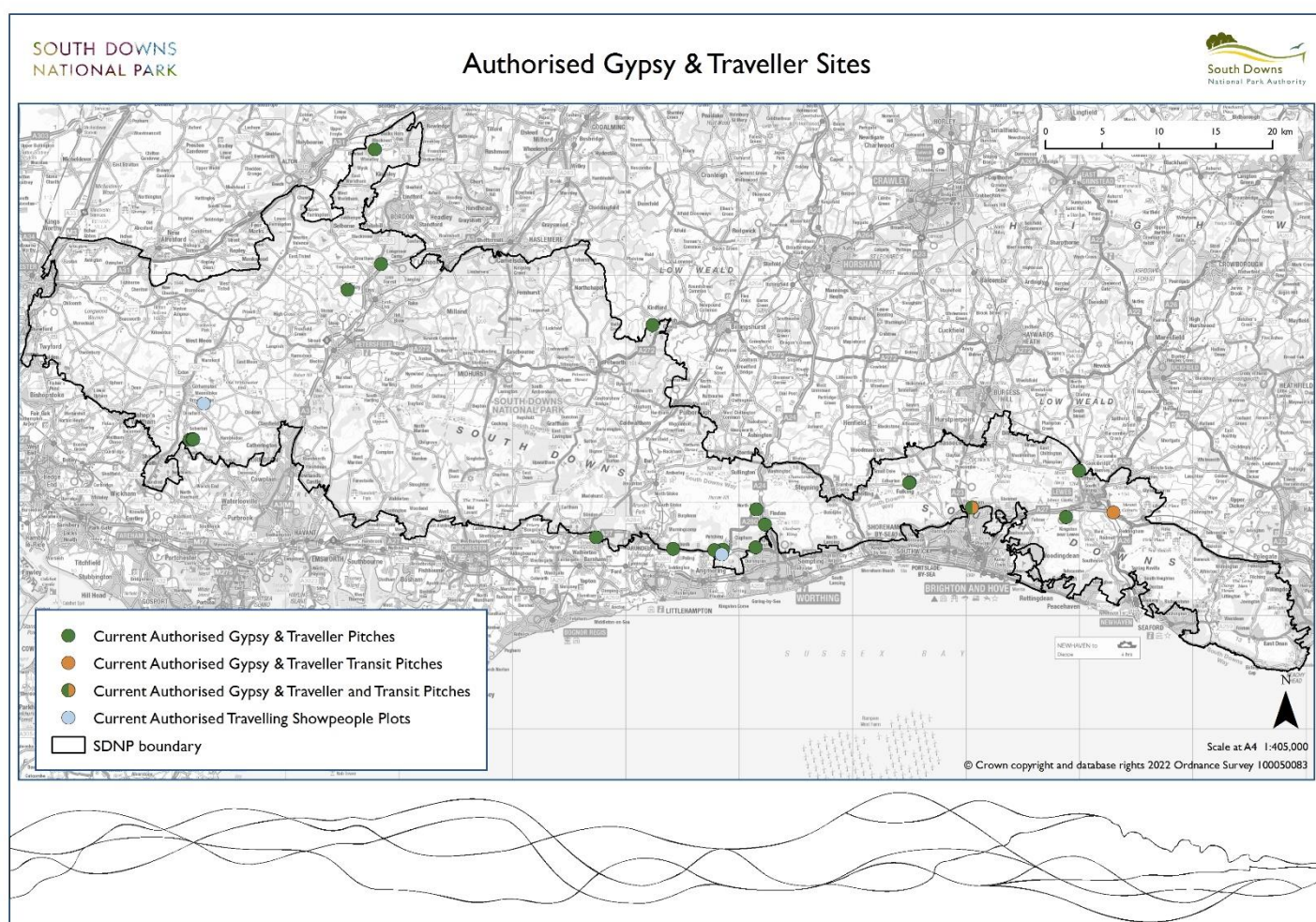
Current unauthorised sites (gypsy, traveller and travelling showpeople)

6.3 There are a number of unauthorised sites currently, which have enforcement action being taken. In total there are five sites within the SDNP. Three sites are in the part of the National Park within East Hampshire. They are Land adjacent to Quin Hay, Froxfield, which was recently refused planning permission and is awaiting an appeal. New Barn Lane, Blendworth has been vacated due to an injunction and has a



high court hearing in April 2022. Land at Green Street, East Worldham is awaiting a planning decision¹³.

- 6.4 There is one site within the Chichester part of the National Park namely Three Cornered Piece, East Harting. There is an appeal against refusal currently pending.
- 6.5 It is understood that there is a private unauthorised gypsy and traveller site at the north end of Titnore Lane, West Worthing.
6. There is one site, Greenacres, that is within Horsham. This site is unauthorised, and all of the caravans on site are just outside the National Park. There is a small part of the site that is within the SDNP but it does not have any caravans on it.



¹³ Please note that these updates are from 31 January 2022.

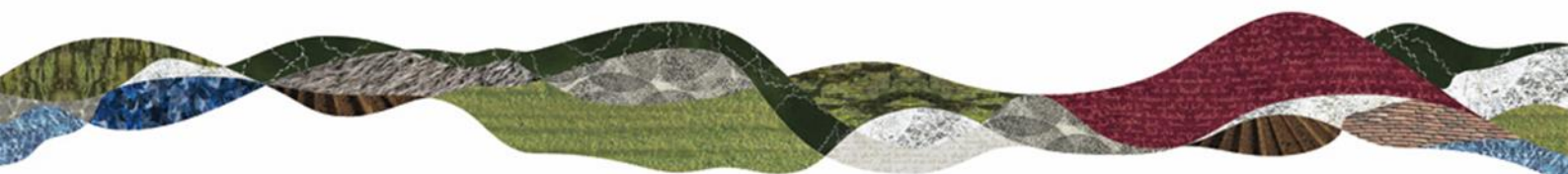
7. The updated GTAA's since the adoption of the SDLP

- 7.1 The SDNPA works with the local and county authorities on the accommodation assessments for gypsies and travellers. For the SDLP this was a key component to identify any cross boundary planning issues and the overall need. For this background paper we are simply presenting any figures that have been updated since 01 March 2018, as noted in Chapter 3. They may go on to form part of the evidence for the future SDLP Review.
- 7.2 This section of the paper will present the update to the unmet need noted in the SDLP. It will also present any GTAA's that have been carried out and completed since the adoption of the SDLP, and were not used as evidence for the examination of the SDLP.
- 7.3 There are no nationally set Government targets for the number of traveller pitches that a Local Planning Authority (LPA) must provide. Instead, it is left for the LPA to calculate the provision needed in their own areas. These figures are typically generated by evidence gathered in GTAA's.
- 7.4 The Covid-19 pandemic has had an effect on all of our lives. Since March 2020, there have been various government guidance and restrictions. The role of Local Planning Authorities and decision making had to continue, however, there have been some delays to work including the Winchester GTAA and East Sussex GTAA.

Brighton and Hove

- 7.5 The GTAA (2015) that evidenced the SDLP, for that part of Brighton and Hove within the National Park, noted the need for:
- 13 gypsy and traveller pitches;
 - 0 travelling showpeople plots and,
 - 0 transit pitches.
- 7.6 Since the SDLP adoption, Brighton and Hove updated their [GTAA \(2019\)](#)¹⁴ including that part of the City within the National Park. This recorded a need for:
- (A reduction to) 11 gypsy and traveller pitches;
 - 0 travelling showpeople plots and,
 - 0 transit pitches.
- 7.7 With regard to transit pitches, it is noted in paragraph 7.41-7.43 of the 2019 GTAA, there is no need for any increase to transit pitches.

¹⁴ Brighton and Hove, 2019, GTAA - <https://www.brighton-hove.gov.uk/sites/default/files/migrated/article/inline/2019%2009%2024%20Brighton%20%20Hove%20GTAA%20Draft%20Final%20Report.pdf>



7.8 There are no allocations made in the SDLP for the area of Brighton and Hove within the National Park. This was due to the lack of suitable sites available for allocation at the time of the SDLP preparation.

Coastal West Sussex¹⁵

7.9 The SDLP identifies a zero need figure for the Coastal West Sussex area.

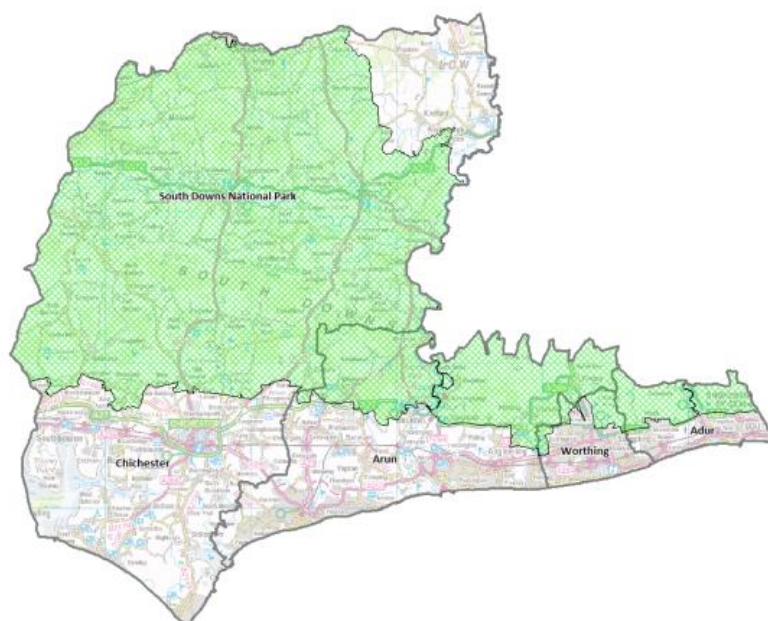
7.10 Since the SDLP adoption, Coastal West Sussex have updated their [GTAA \(2018, amended in 2019\)](#)¹⁶. The SDNPA were not invited to take part in this study, but the need within the SDNP was assessed in this GTAA. This noted that the SDNP had a need for:

- Adur - 0 gypsy and traveller pitches;
- Arun - 11 gypsy and traveller pitches;
- Chichester – 6 gypsy and traveller pitches and,
- Worthing – 0 gypsy and traveller pitches.

7.11 This totals as 17 pitches within the Coastal West Sussex area. More commentary on this is found in Chapter 8, paragraph 8.5-8.6

7.12 Figure 48 within the 2019 updated GTAA, notes that there is a need for one additional travelling showpersons plot within the SDNP.

7.13 Figure 7.13 Coastal West Sussex study area.



East Hampshire

7.14 The GTAA (2017) that evidenced the SDLP, for that part of East Hampshire within the National Park, noted the need for:

¹⁵ Coastal West Sussex is comprised of Adur, Arun, Chichester and Worthing District and Borough Councils.

¹⁶ Coastal West Sussex, 2019, GTAA - https://www.chichester.gov.uk/media/31924/Coastal-West-Sussex-Gypsy-and-Traveller-Accommodation-Assessment-Final-Report---Revised/pdf/2019_05_16_Coastal_West_Sussex_GTAA_Draft_Final_Report_by_LA_-_Revised.docx.pdf

- 6 gypsy and traveller pitches;
- 9 travelling showpersons plots and,
- 0 transit pitches.

7.15 Since the SDLP adoption, East Hampshire updated their [GTAA 2020](#)¹⁷. This noted the part of the SDNP within East Hampshire has a need for:

- 0 gypsy and traveller pitches;
- 7 travelling showpersons plots and,
- 0 transit pitches.

7.16 There are two allocations in the SDLP for the area of East Hampshire within the National Park.

- SD61: New Barn Stables, Binsted for 1 permanent pitch and;
- SD72: Land at Fern Farm for 4 permanent pitches.

East Sussex¹⁸

7.17 The GTAA (2015) that evidenced the SDLP, for the part of the National Park within East Sussex, noted the need for;

- 8 gypsy and traveller pitches
- 0 travelling showpersons plots and,
- 8 transit pitches – this figure was not disaggregated to give a figure for the SDNPA only.

7.18 There were two allocations made in the SDLP for that part of the National Park within East Sussex.

- SD75: The Pump House, Kingston for 1 permanent pitch and,
- SD83: Offham Barns, Offham for 4 permanent pitches.

7.19 An update to the GTAA is currently being drafted for East Sussex, including the SDNP. However, it is currently not published at the time of this paper being written. There will be a small addendum made to this report in early 2022 for when the two draft GTAA (East Sussex and Winchester) are published.

Horsham

7.20 The SDLP does not present any need figures for the Horsham area within the National Park. The GTAA that evidenced the SDLP presented no need for gypsy, traveller or travelling showpeople in this area. As previously noted in the 2018 background paper, with the exception of a very small part of the Small Dole site

¹⁷ East Hampshire District Council, 2020, GTAA - <https://cdn.easthants.gov.uk/public/documents/Gypsy.%20traveller%20and%20travelling%20showpeople%20accommodation%20assessment%202020.pdf>

¹⁸ East Sussex - Rother, Wealden, Lewes & Eastbourne



being within the SDNP, there are no other sites within the Horsham parts of the SDNP.

- 7.21 Since the SDLP adoption, Horsham updated their [GTAA 2020](#)¹⁹. This also presented that there was no need for gypsy, traveller or travelling showpeople.

Mid Sussex

- 7.22 The SDLP does not present any need figures for the Mid Sussex area within the National Park. The GTAA that evidenced the SDLP presented no need for gypsy, traveller or travelling showpeople.
- 7.23 The previous background paper, paragraph 6.12, notes that the estimation of need to be zero. This is based on the recent granting of planning permissions in Fulking, which is where the main estimation of need had been generated. The SDNPA worked with Mid Sussex on including the area of Fulking which is inside the National Park in an updated GTAA. The findings of this report suggest that there may be a future need in the next ten years.

Winchester

- 7.24 The SDLP does not present any need figures for the Winchester area within the National Park. The GTAA that evidenced the SDLP presented no need for gypsy, traveller or travelling showpeople. At the time, this was due to the vacation of residents of the temporary sites Copperfields and Ruperts Roost to locations outside of the National Park. Both sites were given permission until June 2018. Once the updated GTAA has been published by WCC, we will update this document on any information on these sites.

SDNPA Gypsy and Traveller Provision

- 7.25 Since 2018, the SDNPA has allocated and given planning permission to a total of 12 pitches across the National Park to meet the need in the SDLP. These were:
- Land at Fern Farm, Greatham (East Hampshire) for four pitches – SDLP allocation
 - New Barn Stables, Binsted (East Hampshire) for a single pitch – SDLP allocation
 - Half Acre, Hawkley (East Hampshire) for two pitches – planning permission
 - The Pump House, Kingston (Lewes) for a single pitch – SDLP allocation
 - Offham Barns, Offham (Lewes) for four pitches – SDLP allocation
- 7.26 Further information on planning applications can be found in Section 9 of this document.

¹⁹ Horsham District Council, 2020,GTAA - https://www.horsham.gov.uk/_data/assets/pdf_file/0015/80223/Gypsy-and-Traveller-Accommodation-Assessment.pdf

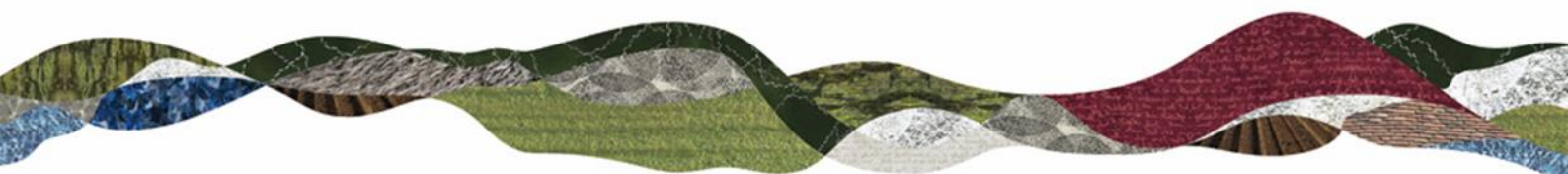


8. Meeting the Need

- 8.1 This section of the report compares what was set out in the SDLP Policy SD33 and updates to any GTAA reports across the SDNP. There is also some commentary around any unmet need from the SDLP and updated GTAA's.
- 8.2 **Figure 8.2: Outstanding unmet need in the National Park**



Local Authority	Policy SD33 need figure	GTAA update	Unmet Need October 2018	Outstanding Unmet Need October 2021
Brighton and Hove	<ul style="list-style-type: none"> 13 gypsy and traveller pitches 0 travelling showpeople plots 	GTAA – Sept 2019	<ul style="list-style-type: none"> 13 Gypsy and Traveller pitches 0 Travelling Showpeople plots 	<ul style="list-style-type: none"> 11 gypsy and traveller pitches 0 travelling showpeople plots
Coastal West Sussex (Adur, Arun, Chichester, Worthing)	<ul style="list-style-type: none"> 0 gypsy and traveller pitches 0 travelling showpeople plots 	GTAA (2018), revised April 2019	<ul style="list-style-type: none"> 0 Gypsy and Traveller Pitches 0 Travelling Showpeople plots 	<p><u>GTAA – Gypsy and Travellers</u></p> <ul style="list-style-type: none"> Adur – 0 Arun – 11 Chichester – 6 Worthing – 0 <p><u>GTAA – Travelling Showpeople</u></p> <ul style="list-style-type: none"> 1 travelling showperson's plot <p><u>Appeals</u></p> <ul style="list-style-type: none"> One ongoing G&T appeal in Chichester for 1 family.
East Hampshire	<ul style="list-style-type: none"> 6 gypsy and traveller pitches 9 travelling showpeople plots 	GTAA – July 2020	<ul style="list-style-type: none"> 0 Gypsy and Travellers 9 Travelling Showpeople 	<ul style="list-style-type: none"> Need - 0 need for gypsy and traveller pitches. 7 travelling showpeople plots.
East Sussex (Rother, Wealden, Lewes & Eastbourne)	<p>SDLP *did not include Rother</p> <ul style="list-style-type: none"> 6 gypsy and traveller pitches (5 allocated in SDLP) 0 travelling showpeople plots 	The GTAA is currently being updated by East Sussex and is due shortly.	<ul style="list-style-type: none"> 1 Gypsy and Traveller pitch 0 Travelling Showpeople plots 	<p>SDLP indicates outstanding need for 1 gypsy and traveller pitch. 0 need for travelling showpeople plots. The background paper notes the need for transit pitches.</p> <p>The soon to be published GTAA may change these figures.</p>



Horsham	<ul style="list-style-type: none"> • 0 gypsy and traveller pitches • 0 travelling showpeople plots 	GTAA – January 2020	<ul style="list-style-type: none"> • 0 Gypsy and Traveller pitches • 0 Travelling Showpeople plots 	<ul style="list-style-type: none"> • Need - 0 need for gypsy and traveller pitches • Need – 0 need for travelling showpeople plots
Mid Sussex	<ul style="list-style-type: none"> • 0 gypsy and traveller pitches • 0 travelling showpeople plots 	No update to GTAA since Local Plan evidence base (2016).	<ul style="list-style-type: none"> • 0 Gypsy and Traveller pitches • 0 Travelling Showpeople plots 	<p>SDLP indicates 0 need for gypsy pitches and travelling showpeople plots.</p> <p>The current background paper notes the need for transit pitches across the study areas.</p> <p>The SDNPA worked with Mid Sussex on including the area of Fulking which is inside the National Park in an updated GTAA. The findings suggest that there may be a future need in the next ten years.</p>
Winchester	<ul style="list-style-type: none"> • 0 gypsy and traveller pitches • 0 travelling showpeople plots 	<p>No update to GTAA since Local Plan evidence base (2016).</p> <p>Winchester are currently updating their GTAA but it is not publically available.</p>	<ul style="list-style-type: none"> • 0 Gypsy and Traveller pitches • 0 Travelling Showpeople plots 	<ul style="list-style-type: none"> • Need - 0 need for gypsy and traveller pitches • Need – 0 need for travelling showpeople plots

8.3 From the identified need of 25 total pitches in the SDLP, as of 1 October 2021, there is a remaining unmet need of 12 permanent pitches for the National Park within the Plan period. With the addition of the figures from the Coastal West Sussex GTAA, this is comprised of:



- 11 pitches in Brighton and Hove and,
- 1 pitch in East Sussex.
- 17 pitches within Coastal West Sussex; 11 in Arun and 6 in Chichester

8.4 The decrease from 25 to 12 pitches is for the following reasons and further information is set out in table 8.2 above:

- Brighton and Hove: the reduction from 13 to 11 is due to an updated GTAA where the figures were reduced;
- Lewes/East Sussex: the reduction from 6 pitches to 1 is due to allocations for gypsy and traveller sites in the SDLP SD75: The Pump House, Kingston for 1 permanent pitch and SD83: Offham Barns, Offham for 4 permanent pitches. This leaves a remaining outstanding need of 1 pitch.
- East Hampshire: the reduction from 6 to 0 is due to allocations for gypsy and traveller sites in the SDLP under Policy SD61: New Barn Stables, Binsted for 1 permanent pitch and SD72: Land at Fern Farm for 4 permanent pitches. Permission was also granted for 2 additional permanent pitches at Half Acre in Hawkley.
- Coastal West Sussex²⁰ (Arun and Chichester only). During the preparation of the SDLP, Coastal West Sussex updated their GTAA. This included the SDNP despite the National Park Authority not being invited to take part in the assessment. Coastal West Sussex covers the areas of; Adur, Arun, Chichester and Worthing. The GTAA (updated 2019) notes the need of 0 in Adur and Worthing. A need of 11 in Arun and 6 in Chichester. These figures are just for the area of the SDNP and do not relate to the whole of the Authority areas.

8.5 In addition, a need has been identified for 7 Travelling Showperson's plots in the East Hampshire area of the National Park that is noted in Figure 7.4. A Travelling Showperson's plot is the equivalent of Gypsy and Traveller pitch, but also incorporates space for storage and additional vehicles. This is a decrease of 2 plots, from the earlier 2017 GTAA.

Outstanding Need for the whole of the SDNPA

²⁰ Coastal West Sussex includes; Adur, Arun, Chichester and Worthing



8.6 The total unmet need for Gypsy and Travellers pitches in the whole of the SDNPA is:

- 11 pitches in Brighton and Hove
- 1 pitch in East Sussex
- 11 pitches in Arun
- 6 pitches in Chichester

The total unmet need for the SDNPA is 29 Gypsy and Traveller pitches.

8.7 The total unmet need for Travelling Showpeople plots in the whole of the SDNPA is:

- 7 plots in East Hampshire
- 1 plot in Coastal West Sussex (Adur, Arun, Chichester, Worthing)

The total unmet need for the SDNPA is 8 Travelling Showpeople plots.



9. Recent Applications

9.1 Table 9.1 shows recent planning applications for Gypsy, Traveller and Travelling Showpeople both approved and refused.

Table 9.1 – Recent planning applications

Application reference	Year	Local Authority Area	Commentary (Approved/refused/appeal)
2018			
SDNP/17/03762/CND	2018	Mid Sussex	Application approved. Market Gardens, Clappers Lane, Fulking. To increase the number of caravans to 2 mobile homes and 2 touring caravans and ancillary day room.
SDNP/18/00441/CND	2018	East Hampshire	Application approved. Half Acre, Hawkley Road, Liss. Removal of conditions on planning consent SDNP/17/01406/FUL to make temporary planning permission permanent.
SDNP/18/03217/FUL	2018	Winchester	Application approved. Four Acres, Midlington Road, Droxford. Change of use to mixed residential and caravan site for a single family occupation, which includes 5 mobile home units (Retrospective).
2019			
SDNP/18/06320/CND	2019	Lewes	Application approved. The Pump House, Kingston Ridge, Kingston. Relating to SDNP/15/03511/CND to allow site to be occupied by any gypsy traveller – Local Plan allocation.
SDNP/18/05963/FUL	2019	Mid Sussex	Application refused and appeal allowed Market Gardens, Clappers Lane, Fulking. Material change of use of land for stationing of caravans for residential occupation with hard standing. This application then went to appeal against the refusal of planning permission (more details in Chapter 10). The appeal was allowed in Feb 2021, and permission was granted.

SDNP/19/01713/FUL	2019	Chichester	Application refused and appeal dismissed Garretts Copse, Moorhen Lane, South Harting. Change of use from agricultural land to site for 2 Showmen's plots. This application then went to appeal against the refusal of planning permission (more details in Chapter 10). The appeal was dismissed in March 2021.
SDNP/19/03592/FUL	2019	Chichester	Application refused. Three Cornered Piece, Hollow Road, East Harting. Demolition of stables and removal of the existing static mobile home and erection of 1 no. dwelling. This application has an appeal in progress, with more information in Chapter 10.
2020			
SDNP/20/02935/CND	2020	Chichester	Application refused. Three Cornered Piece, Hollow Road, East Harting. Change of use to a mixed use of the land comprising the keeping and grazing of horses and a gypsy and traveller site for one family. (Variation of conditions 1 – 4 of planning permission SDNP/16/06318/FUL to make the permission permanent, non-personal to increase the number of mobile homes by one to change the layout). This application has an appeal in progress, with more information in Chapter 10.
SDNP/20/03501/LDP	2020	Arun	Application refused. The Ranch, Water Lane, Angmering. To use the land for the stationing of caravan for occupation by travelling showperson. This application has an appeal in progress, with more information in Chapter 10.
SDNP/19/02237/FUL	2020	East Hampshire	Application approved. Fern Farm, Longmoor Road, Greatham. Erection of four mobile pitches for Gypsy/Traveller accommodation, utility day/room building, replacement stables and associated hardstanding following demolition of the existing buildings. This is a Local Plan allocation – policy SD72: Land at Fern Farm.
2021			

SDNP/20/03047/FUL	2021	East Hampshire	Application refused. Land East of Seven Stars, Winchester Road, Stroud. Change of use of land to travelling showpersons yard consisting 4 plots each with a mobile home, touring caravan, storage/maintenance area, parking and associated works.
SDNP/21/01338/FUL	2021	East Hampshire	Application refused. Land adjacent to Quin Hay Farm, Petersfield Road, Froxfield. Change of use of land for the creation of a single pitch Traveller site comprising the siting of 1 mobile home and 1 touring caravan.
Ongoing applications (as of December 2021)			
SDNP/21/02991/FUL	2021	East Hampshire	Application in progress. Land South of Christmas Cottage (Formerly Foxes), Green Street, Kingsley. Retrospective change of use of land for the creation of a 2 gypsy/traveller site, comprising the siting of 1 mobile home, and 1 touring caravan, per pitch and vehicular access onto Green Street.
SDNP/22/00083/FUL	2022	East Hampshire	Application in progress. Land East of Seven Stars, Winchester Road, Stroud. A previous application above (SDNP/20/03047/FUL) was refused in 2021. This application is for change of use of land to travelling showperson yard consisting of 4 plots each with a mobile home, touring caravan, storage/maintenance area, vehicle parking and associated works.

10. Recent Appeal Decisions

10.1 Table 10.1 shows recent planning appeals for Gypsy, Travellers and Travelling Showpeople. There will also be some commentary to go alongside each planning appeal presented.

Table 10.1 – Recent appeal decisions

Year	Planning app reference	Appeal reference	Local Authority Area	Commentary
2021	SDNP/18/05963/FUL	SDNP/19/00021/REF	Mid Sussex	<p>Appeal against refusal – appeal allowed. Market Gardens Caravan Site, Clappers Lane, Fulking.</p> <p>This appeal was dealt with through written representations led by officers at the SDNPA. The main comments from the appeal were, although the Inspector acknowledged the moderate harm the proposal would enforce on the character and appearance to the National Park. There were several points in favour of the proposal. That the Council cannot demonstrate a five year supply of pitches, and finally a lack of options for the Hearn brothers and their families outside of the National Park. Unmet need in this case was therefore an important consideration. This was a considerable point in favour of the appeal, given there was an overall lack of alternatives.</p> <p>Allowing this appeal brought the number of caravans on site at Market Garden to four.</p>
2021	SDNP/19/01713/FUL	SDNP/19/00107/REF	Chichester	<p>Appeal against refusal – appeal dismissed. Garretts Copse, Moorhen Lane, South Harting.</p> <p>This appeal was dealt with through an informal hearing led by officers at the SDNPA. The main issues were the effect of the proposal on local character and whether the appeal site is an appropriate location for two travelling showpersons' plots, in particular regard to the accessibility of services and facilities. The personal circumstances of the appellant also was a consideration for the appeal. Whilst the appellant herself is a gypsy, the intended occupant of one of the proposed plots (the appellants daughter) was not. The Inspector concluded that the benefits of allowing the appeal to the intended occupants are material and insufficient in and of themselves to justify granting a personal permission. Moreover, dismissing the appeal would not unduly adversely affect any intended occupants.</p>

2021	SDNP/20/03501/LDP	SDNP/20/00063/REFCLU	Arun	<p>Certificate of Lawfulness appeal against refusal – Appeal allowed. The Ranch, Water Lane, Angmering.</p> <p>To use the land for the stationing of a caravan for occupation by travelling showperson. The appeal was allowed; however, in paragraph 20 of the Inspectors report, it noted that it was unclear whether the owners of the land were travelling showpeople. Furthermore, it is unclear whether the caravan would have been occupied by travelling showpeople, had it been occupied.</p> <p>This appeal was being dealt with through written representations and led by enforcement officers at the SDNPA.</p>
Ongoing appeals (as of December 2021)				
2021	SDNP/19/03592/FUL / SDNP/20/02935/CND	SDNP/21/00014/COND	Chichester	<p>Appeal against conditions imposed – Appeal in progress. Three Cornered Piece, Hollow Road, East Harting.</p> <p>Change of use to a mixed use of the land comprising the keeping and grazing of horses and a gypsy and traveller site for one family. (Variation of conditions 1, 2, 3 and 4 of planning permission SDNP/16/06318/FUL- To make the permission permanent, non-personal to increase the number of mobile homes by one to change the layout.)</p> <p>This appeal is being dealt with through an informal hearing led by officers at Chichester District Council.</p>
2021	SDNP/21/00548/FUL	SDNP/21/00027/REF	East Hampshire	<p>Appeal against refusal – Appeal in progress. Land East of New Barn Farm Lane, Blendworth.</p> <p>Change of use from Equestrian to a mixed use, of equestrian and residential, to allow for the creation of 4 Gypsy/Traveller pitches, comprising the siting of 1 mobile home, 1 touring caravan, and the erection of 1 dayroom per pitch.</p> <p>This appeal is being dealt with through a public inquiry and led by officers at East Hampshire District Council.</p>

2022	SDNP/21/01338/FUL	APP/Y9507/W/21/3285377	East Hampshire	<p>Appeal against refusal – Appeal in progress</p> <p>Land adjacent to Quin Hay Farm, Petersfield Road, Froxfield.</p> <p>Change of use of Land for the creation of a single pitch Traveller site comprising the siting of 1 Mobile Home and 1 Touring Caravan. The appeal has additional details on visibility splays, highways comments and preliminary ecological assessment.</p> <p>This appeal is being dealt with through a public inquiry and led by officers at East Hampshire District Council.</p>
------	-------------------	------------------------	-------------------	--

Appendices

Appendix A – Frequently asked questions

FAQ	Response
What is the need for this background paper?	The reason for this background paper is to update SDNPA officers and the public on gypsy, traveller and travelling showperson need within the SDNP. It was last written with a base date of 01 March 2018 and there has been changes since this date.
What is the definition of a gypsy and traveller?	<p>The legal definition of a Gypsy was first set out in the 1968 Caravan Sites Act. This definition, drawn from the case of Mills v Cooper (1967), stated that the term "Gypsy" meant "persons of nomadic habit of life, whatever their race or origin, but does not include members of an organised group of travelling showpeople or persons engaged in travelling circuses travelling together as such". The term however is difficult to define as it does not constitute a single, homogenous group, but encompasses a range of different histories, cultures and beliefs. This includes: Romany Gypsies, Welsh Gypsies, Scottish Gypsy Travellers and Irish Travellers. Further information can be found from page 10: https://researchbriefings.files.parliament.uk/documents/CBP-8083/CBP-8083.pdf</p> <p>In 2015 this was further updated to say “no longer includes those who have ceased travelling permanently for any reason, including old age or disability.”</p>
What is a GTAA?	GTAA stands for ‘Gypsy and Traveller Accommodation Assessment’. This is an assessment that Local Planning Authorities (LPA) are required to undertake to identify any outstanding unmet need. It can also identify where there are unauthorised sites and what future need there may be.
Why does the SDNPA not have one GTAA for the whole National Park?	The SDNPA is covered by many District and Borough Councils who each need to carry out their own GTAAs. The SDNPA works with each Council on these assessments, so it is a full picture for the whole Authority area. The assessment will just indicate which parts are for in and outside the National Park. It is also why documents such as these are an important thing to update, as the need for the whole SDNP is split up over many different documents.
What is the difference between Authorised and Unauthorised sites?	Simply, an unauthorised site is a site that does not have the relevant planning permissions or permission to be in use. An authorised site is one that has gained the relevant temporary or full planning permissions. The term ‘tolerated’ is also sometimes used in relation to gypsy and traveller sites. This is one where the local authority or land owner decided to not seek the removal of the encampment, and where one has been ‘tolerated’ for a period of time.

Appendix B – Link to all GTAA's

Local Authority	Year	Link
Brighton and Hove	2019	https://www.brighton-hove.gov.uk/sites/default/files/migrated/article/inline/2019%2009%2024%20Brighton%20%20Hove%20GTAA%20Draft%20Final%20Report.pdf
Coastal West Sussex (Adur, Arun, Chichester, Worthing)	2018 and updated 2019	https://www.chichester.gov.uk/media/31924/Coastal-West-Sussex-Gypsy-and-Traveller-Accommodation-Assessment-Final-Report---Revised/pdf/2019_05_16_Coastal_West_Sussex_GTAA_Draft_Final_Report_by_LA_-_Revised.docx.pdf
East Hampshire	2020	https://cdn.easthants.gov.uk/public/documents/Gypsy,%20traveller%20and%20travelling%20showpeople%20accommodation%20assessment%202020.pdf
East Sussex (Rother, Wealden, Lewes & Eastbourne)	2015	https://www.southdowns.gov.uk/wp-content/uploads/2015/08/FINAL-East-Sussex-SDNP-GTAA-Feb-2014.pdf
Horsham	2020	https://www.horsham.gov.uk/_data/assets/pdf_file/0015/80223/Gypsy-and-Traveller-Accommodation-Assessment.pdf
Mid Sussex	2016	https://www.southdowns.gov.uk/wp-content/uploads/2018/04/TSF-22-Mid-Sussex-District-GTAA.pdf
Winchester	2016	https://www.southdowns.gov.uk/wp-content/uploads/2018/04/TSF-16-Winchester-GTAA.pdf

Glossary

Amenity block / shed/ utility/ Day room	A building, typically freestanding, where basic amenities can be found. It is essential for amenity buildings to be provided for each pitch. A day room is also typically found within the amenity block, this can provide a kitchen and lounge/living area.
Bricks and mortar	Mainstream housing.
Caravan	Mobile living vehicle, equipped for living in. Can be either mobile 'touring' or static (needs a trailer to be moved).
Concealed household	Households living with or within other households. They are typically not identified as being separate within a GTAA study.
Doubling up	Linked to concealed households, where there are more than the permitted number of caravans within the designated pitch or plot.
Gypsy and Traveller Accommodation Assessment (GTAA)	A piece of work that Local Planning Authorities are obliged to produce. A GTAA has an objective to provide a robust assessment of current and future need for Gypsy, Traveller and Travelling Showpeople accommodation across a particular area. Typically they will cover a Local Authority Area, but sometimes they are done in groups i.e. several Local Authorities together.
Local Plan	A document that is produced by a LPA and they are used to help decide on planning applications and other planning related decisions. They are a local guide on what can be built where, shaping infrastructure and development patterns.
Household	A family that will live within a pitch/plot together.
Pitch and plot	An area of land that is home to one household. Both a pitch and plot will have multiple components that make up the pitch and plot. Pitches refer to gypsy and traveller sites and plots refer to travelling showpeople yards. A pitch will comprise of a static caravan, a mobile home, utility/day room.
Personal planning permission	This type of planning permission refers to a private site where the site occupancy cannot be transferred to a different household for ownership.
Site	An area of land that gypsies, travellers and travelling showpeople are accommodated in. A site can contain one or multiple households on pitches and plots.
Temporary site	A private site that has planning permission for a temporary amount of time. This will be established at planning permission stage and will be set within planning conditions.
Tolerated site	A tolerated site is one that is long term established and enforcement action has not been sought.
Transit sites	A site intended for short stays only and contains all the facilities that would be needed for families travelling. There will usually be a limit on stay time.

Yard	A name used to refer to a site for a travelling showperson.
------	---