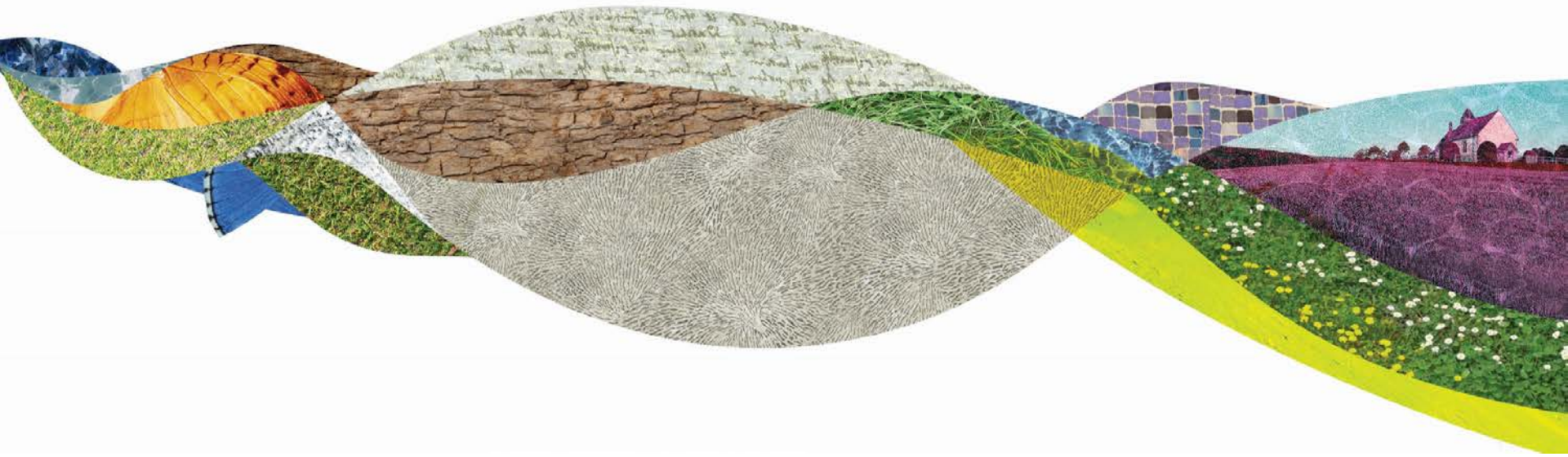


SOUTH DOWNS NATIONAL PARK

Town & Parish Communications

West Sussex Parish Workshop
15.06.21



Chris Paterson – Communities Lead

Events

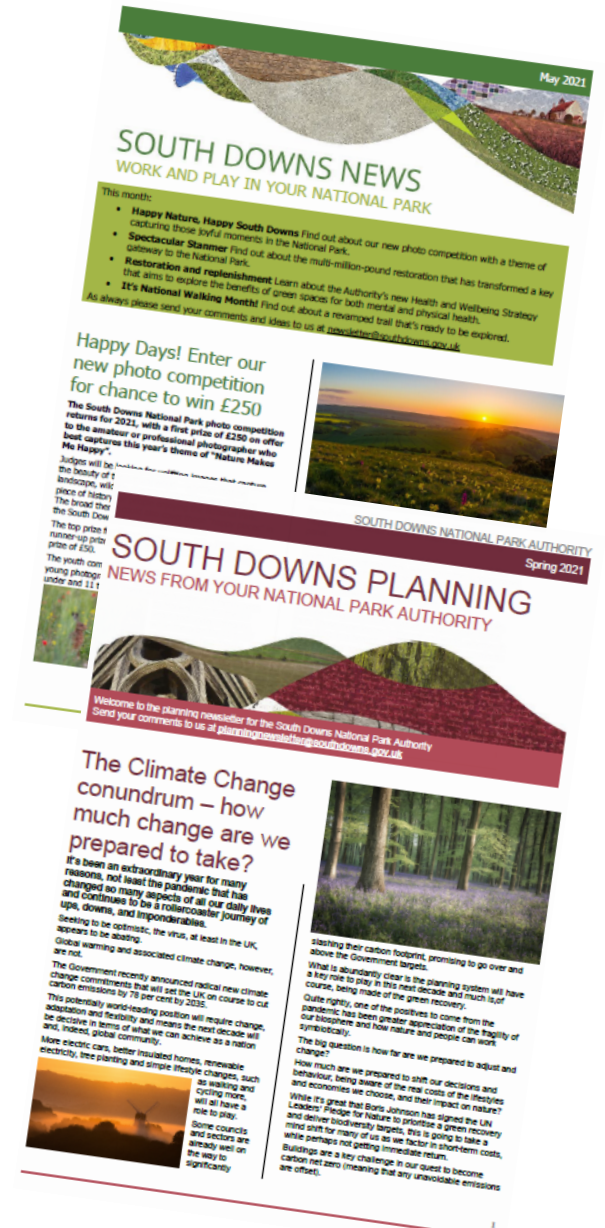
- Town and Parish Council workshops (Summer)
 - a. A workshop for each county
 - b. In person in the future
 - c. For Town and Parish Councils only

- Town and Parish Webinars
 - a. Open to the wider community, community groups
 - b. Recorded so they can be shared
 - c. Sharing best practice / enabling action to support the PMP



Newsletters

- Monthly South Downs News
 - a. Stories, ideas for days out, hear about ranger and volunteer work and key SDNPA projects
 - b. Sign up to receive the newsletter here [Join the Newsletter - South Downs National Park Authority](#)
 - c. Share with other community groups in your area
- Quarterly Planning Newsletter
 - a. Keep up to date with all the Planning news across the National Park
 - b. You can sign up to the newsletter here [Planning Newsletter - South Downs National Park Authority](#)



Ranger teams and other officers

- Ranger teams working across the National Park

Central Downs

Wealden Heath

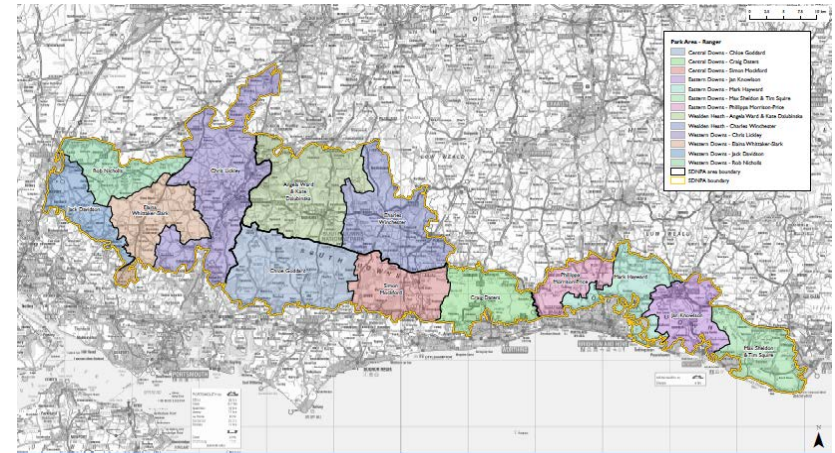
Western Downs

Eastern Downs

- [Rangers - South Downs National Park Authority](#)

- Planning Link Officer – nat.belderson@southdowns.gov.uk

- Stella.new@southdown.gov.uk

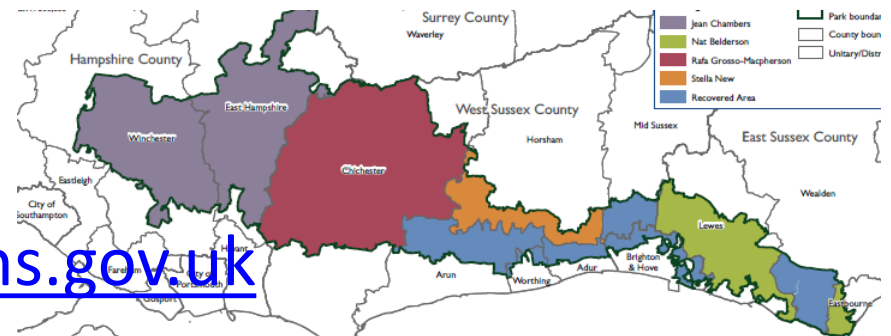


Wealden Heath – 01730

817945 info@southdowns.gov.uk

Central Downs – 01243

811533 info@southdowns.gov.uk



Ranger teams and other officers



- [Our People - South Downs National Park Authority](#)
- Communities Lead –
chris.Paterson@southdowns.gov.uk
- [SDNPA Structure - South Downs National Park Authority](#)

General enquiries



- General Enquiries - info@southdowns.gov.uk 01730 814810
- Planning Enquiries - planning@southdowns.gov.uk
- Press and publicity - press@southdowns.gov.uk
- Volunteering Enquiries - volunteering@southdowns.gov.uk

Thank you

Chris Paterson

Chris.Paterson@southdowns.gov.uk

