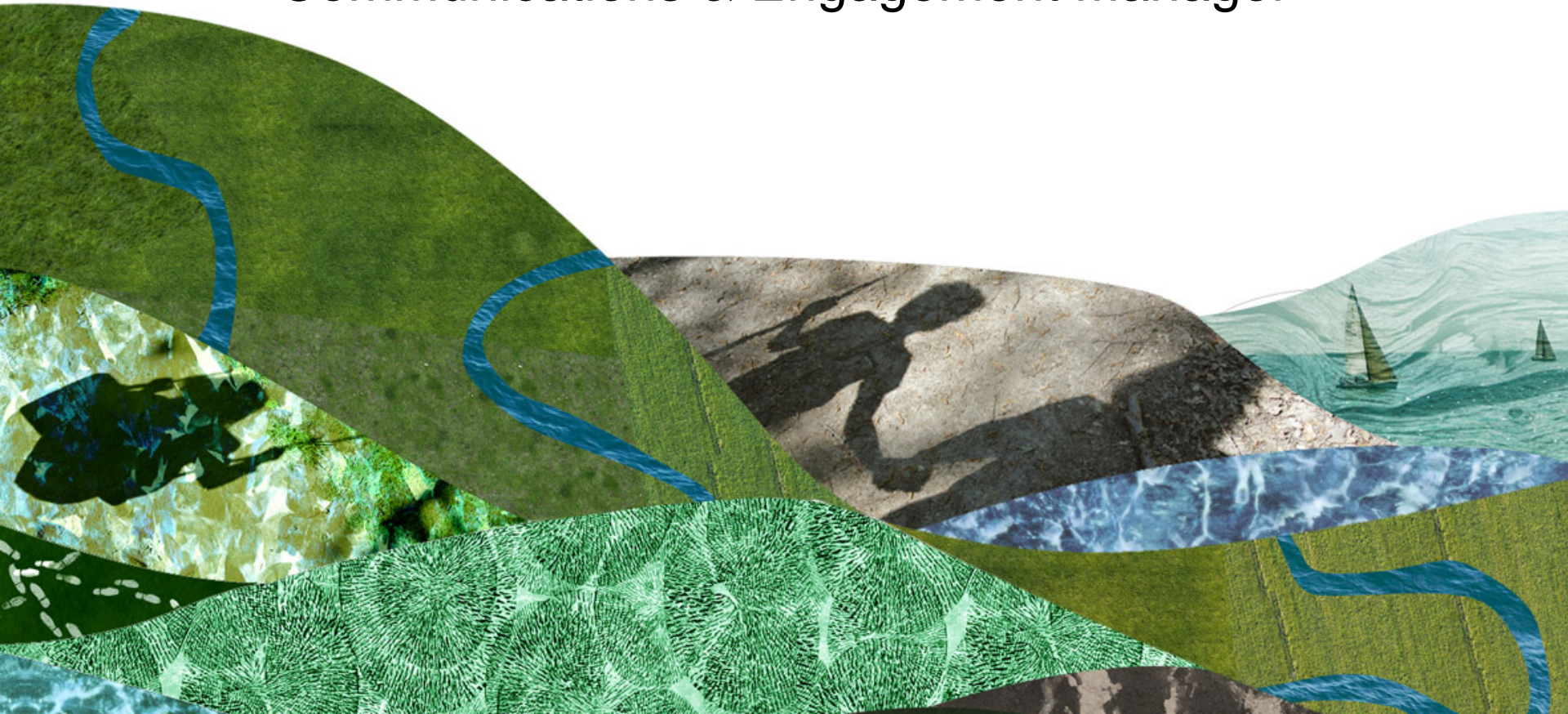


Visitor Management

Ruth James
Communications & Engagement Manager



Clear, positive and proactive communications

Happy Nature, Happy You, Happy South Downs

Welcome to the SOUTH DOWNS NATIONAL PARK

Happy Nature, Happy You, Happy South Downs


<p>Plan ahead before you travel</p> 	<p>Travel sustainably if you can, journey by foot or bike</p> 	<p>Practise social distancing at all times</p> 
<p>Take your litter home</p> 	<p>Do not wild camp, have BBQs, or light fires</p> 	<p>Respect wildlife, heritage and local communities</p> 
<p>Keep your dog on a lead, and stick to the path</p> 	<p>Avoid popular hotspots</p> 	<p>Do not park on verges</p> 
<p>Support our farmers Do not picnic on private land or disturb livestock</p> 	<p>Be aware! Cliff falls happen at random</p> 	<p>No metal detecting or digging without permission</p> 

Enjoy your visit and thank you for caring for your South Downs National Park

southdowns.gov.uk


SOUTH DOWNS NATIONAL PARK

Critters **not** Litter



Happy Nature, Happy You, Happy South Downs

www.southdowns.gov.uk/HappySouthDowns
#HappySouthDowns



SOUTH DOWNS NATIONAL PARK

Views **not** Poos



Happy Nature, Happy You, Happy South Downs

www.southdowns.gov.uk/HappySouthDowns
#HappySouthDowns



SOUTH DOWNS NATIONAL PARK

Admire **not** Fire



Happy Nature, Happy You, Happy South Downs

www.southdowns.gov.uk/HappySouthDowns
#HappySouthDowns



SOUTH DOWNS NATIONAL PARK

Care **not** Scare



Happy Nature, Happy You, Happy South Downs

www.southdowns.gov.uk/HappySouthDowns
#HappySouthDowns



SOUTH DOWNS NATIONAL PARK

Farm **not** Harm



Happy Nature, Happy You, Happy South Downs

www.southdowns.gov.uk/HappySouthDowns
#HappySouthDowns



The Countryside Code



Your guide to enjoying parks and waterways, coast and countryside

Respect everyone

- be considerate to those living in, working in and enjoying the countryside
- leave gates and property as you find them
- do not block access to gateways or driveways when parking
- be nice, say hello, share the space
- follow local signs and keep to marked paths unless wider access is available

Protect the environment

- take your litter home - leave no trace of your visit
- do not light fires and only have BBQs where signs say you can
- always keep dogs under control and in sight
- dog poo - bag it and bin it - any public waste bin will do
- care for nature - do not cause damage or disturbance

Enjoy the outdoors

- check your route and local conditions
- plan your adventure - know what to expect and what you can do
- enjoy your visit, have fun, make a memory

www.gov.uk/countryside-code



Presence at key hotspots

- 2,000 people
- 23 pop up events



- Support partners as they put practical measures in place
- Promote local businesses and attractions

WELCOME TO KINGLEY VALE NATIONAL NATURE RESERVE

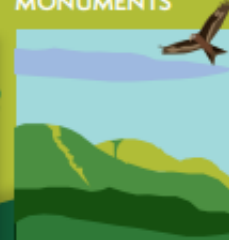
Please help us to take care of the vulnerable habitats, wildlife and rich cultural history on the Reserve.

NO CAMPING OR LIGHTING FIRES/ BARBEQUES



Many of the yew trees in this ancient woodland are over a thousand years old. Rumour has it the yew grove was planted to celebrate a victorious battle over Viking invaders in the year 859! This is a vulnerable landscape that is damaged easily.

RESPECT THE SCHEDULED MONUMENTS



A scheduled monument is an historic site of national importance protected under UK law. There are 14 scheduled monuments on the Reserve, including the Devil's Humps and Goosehill.

It is a criminal offence to destroy or damage a scheduled monument either intentionally or through recklessness.

KEEP DOGS ON LEADS AT ALL TIMES



Chalk grassland is often described as Europe's tropical rainforest with as many as 40 different plant species within just one square meter. Sheep and cattle are essential to maintain this precious habitat which many pollinating insects such as the chalk hill blue butterfly, rely on.

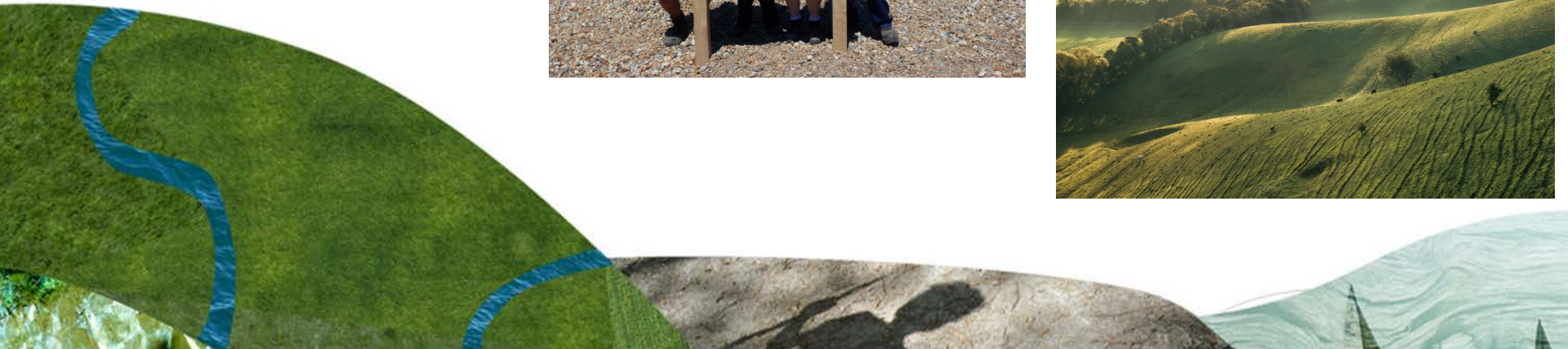
If you spot any suspicious behaviour, please call the police on 101 or dial 999 in the event of an emergency.

By respecting this site, you are helping us to conserve our rich cultural history and important habitats for future generations.



SOUTH DOWNS NATIONAL PARK

Eastern Downs Pop Up Events 2021



Event Schedule

- 12 events scheduled, May to August, 2021.
- Staffed by Ranger team, other staff, Rural crime PCSOs, Members.
- 6 busy sites in the Eastern Downs
- Working with partners, Sussex Wildlife Trust, Mid Sussex District Council, Farmers, Eastbourne Borough Council, Seaford TC
- Engaging, informing and inspiring.



Events so far

- Truleigh, Chalk Farm, Tide Mills.....

