

Birling Gap

There's so much for you and your family to see and do at Birling Gap. The visitor centre offers tracker packs for rock pooling, fossil hunting and grassland bug hunts. The perfect spot to enjoy big skies, coastal landscapes, changing colours and quiet walks throughout the year. The visitor centre at Birling Gap is run by the National Trust. Catch the 13X, it's just a bus ride away.



Route 13X

Buses every 30 minutes from Brighton to Beachy Head and Birling Gap on Sundays and Public Holidays, and daily from 25 July.

The 13X starts its journey from Brighton Station and picks up passengers at Imperial Arcade (bus stop K), North Street (bus stop C) and Sea Life Centre (bus stop K) then selected stops along the Coast Road to Rottingdean, Saltdean, Peacehaven, Newhaven, Seaford and on to Seven Sisters, East Dean, Birling Gap, Beachy Head and Eastbourne.



Beachy Head

Famous for its white cliffs and the dramatic, undulating coastline created by the Seven Sisters, but there is much more to explore. A short walk inland brings you to the village of East Dean, where there's a pub and deli that surround a quaint village green. Beachy Head beer is brewed a short hop down the road. Catch the 12A, 12X to Seven Sisters and the 13X to Beachy Head.

Eastbourne – catch the 12A, 12X or 13X

There is something for everyone in Eastbourne. You can marvel at pro-skaters' stunts and tricks at Eastbourne Extreme or discover more about the area's history, museums and art galleries. If you prefer a more relaxed or scenic day out, you can enjoy the beach, parks and gardens. It doesn't just stop there! You could also sample the local produce from vineyards and farmers' markets and soak up the local atmosphere in one of the many restaurants, wine bars or traditional pubs. South Downs Way National Trail starts here too! With a networkSAVER ticket you can hop on and off as many times as you like. It's perfect for a family day out.

Sensational Seven Sisters – catch the 12A, 12X or 13X

Situated in the South Downs National Park, the Seven Sisters Country Park is comprised of 280 hectares of chalk cliffs, meandering river valley and open chalk grassland. It is a popular location for a number of outdoor activities including walking, birdwatching, cycling and canoeing. The Country Park is named after the famous Seven Sisters that form part of the chalk cliffs on the Sussex Heritage Coast, one of Britain's finest unspoilt coastlines. Harry Potter fans will recognise the stunning location from the film, The Goblet of Fire.

Route 12x

Operates between Brighton and Eastbourne. From Brighton Station, Imperial Arcade, North Street, Sea Life Centre along the Coast Road to Rottingdean, Saltdean, Peacehaven, Newhaven, Seaford and on to Seven Sisters, East Dean and Eastbourne. There's a regular service operating Monday to Saturday.

12X

© SDNPA/Anni Katrina Purkiss



13X

28 29

Operates between Brighton and Tunbridge Wells.

Lewes

Lewes has long been known for its spirit of independence and its inhabitants are proud of the town's significant history stretching back to Saxon times. But it's not all about the history, there are lots of things to do in Lewes. It's a great place to shop with so many independent, antique and quirky shops. It's also the perfect place to stop for a bite to eat or a drink in one of its historic pubs. Lewes also boasts a working brewery situated in the heart of the town. Catch the 28 or 29, it's just a bus ride away.



© SDNPA/Mischa Haller

Tunbridge Wells catch the 29

Tunbridge Wells is the only spa town in the southeast of England. Wealthy people used to come from miles around to 'take to the waters' of those eponymous wells and springs. These days, you can still visit the Chalybeate Spring and The Pantiles with its shops and cafes, and plenty of splendid Georgian architecture to enjoy. It's just a bus ride away.



Metrobus route 270

Operates between Brighton and East Grinstead stopping off at small towns and villages en route through the outstanding Sussex countryside. Lindfield won the 'Best Kept Village in Sussex Award' so often it withdrew to give others a chance! East Grinstead is a lovely destination with a historic High Street that's worth a visit.

The bus route travels from Churchill Square, Old Steine along London Road to Patcham then on to Hassocks, Burgess Hill, Haywards Heath, Lindfield, Horsted Keynes, Forest Row and East Grinstead.



Metrobus route 272

Operates between Brighton and Crawley. From County Hospital, Old Steine along London Road to Patcham then on to Hassocks, Burgess Hill, Haywards Heath, Ardingly, Wakehurst and continues to Crawley. Runs Mondays to Saturdays - every 2 hours.



Stunning Steyning catch the route 2



One of the prettiest towns in Sussex, it has more or less everything - a fine high street, historic buildings, good shops, historic pubs such as The Chequer and tea houses. Surrounded by the lush green countryside nearby, it's the perfect place to visit by bus, making for a great day out.

Operates between Rottingdean and Steyning. From Rottingdean the bus travels via Woodingdean, Race Hill through city centre, Old Steine, Churchill Square, Hove Town Hall then on to Portslade, Southwick, Shoreham, Bramber and Steyning. There's a regular service operating daily.



Wakehurst is Kew Wild Botanic Garden in Sussex

catch the 272

Situated on the High Weald, there are over 500 acres of ornamental gardens, woodlands and a nature reserve waiting to be explored. An Elizabethan mansion stands majestically in the grounds - the perfect backdrop to the mansion's formal gardens and lawns. Wakehurst is also home to the Millennium Seed Bank, which is the largest wild seed conservation project in the world. A stunning walled garden, water gardens and meadowland are just a small part of what you can experience at Wakehurst. Children will love the natural play spaces, while nature lovers will delight in spotting unusual flora, fungi and wildlife in the reserve. It's just a bus ride away.



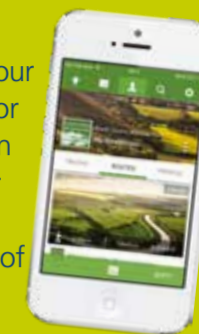
The Brighton & Hove Way

The Brighton & Hove Way follows a circuit of existing rights of way starting from Brighton Palace Pier. Following the undercliff to Saltdean and taking in Castle Hill National Nature Reserve, Falmer, Stanmer Park, the Chattri Memorial, Old Portslade, and returning by Hove Esplanade

www.brightonandhoveway.org.uk

View Ranger App

Download the View Ranger App on your phone, for free, from your app store, or visit southdowns.gov.uk/viewranger on your computer or tablet. Then register and search for the South Downs National Park, to view the entire suite of South Downs walk and ride routes.



Health walks

Every Sunday: beautiful 3-mile guided walks, exploring the woods, village and local downland. Meet 10.45 at Stanmer Tea Rooms. Every Thursday at 11.00, 3-or 5-mile walk from Stanmer Park Gates.

Phone 01273 292574

or visit www.brighton-hove.gov.uk/healthwalks



More info for walkers

For The Downs on Your Doorstep (Stanmer & Ditchling Beacon) leaflet and other South Downs Bus Walks leaflets: Call 01273 292480 or visit www.brighton-hove.gov.uk/countryside and www.brighton-hove.gov.uk/breezebuses. For ideas for your own walk see www.carfreewalks.org, or for local group walks, see www.bahr.org.uk and www.southdownssociety.org.uk.

The Ordnance Survey Explorer map number 122 shows all the paths in the area.

The Living Coast

Brighton is at the heart of The Living Coast UNESCO World Biosphere Region which recognises our internationally important natural environment, our communities and our local, sustainable connections between people and nature. Leave the car at home and travel by bus in the Biosphere. Be part of it at www.thelivingcoast.org.uk.



Sustainable travel – making the environment we live in better for all

By catching the bus instead of taking the car you are adding to your daily step count.

By taking the bus instead of driving you are really helping to reduce carbon emissions and improve air quality in the city and at these beauty spots. Did you know that catching the bus from Brighton Pier to Devil's Dyke would save 1884g of CO2 compared to driving. That's the same as keeping a lightbulb on for 531 hours or keeping the TV on for 195 hours! Find out how much carbon you have saved by catching the bus using our journey planner at buses.co.uk or via our app.

Choose bus travel for extra rewards. Download the **BetterPoints** app and join the Move for Change challenge.



Bus information

Call 01273 886200 or visit www.buses.co.uk

Brighton & Hove

Accessible travel for all



National Trust

SOUTH DOWNS NATIONAL PARK

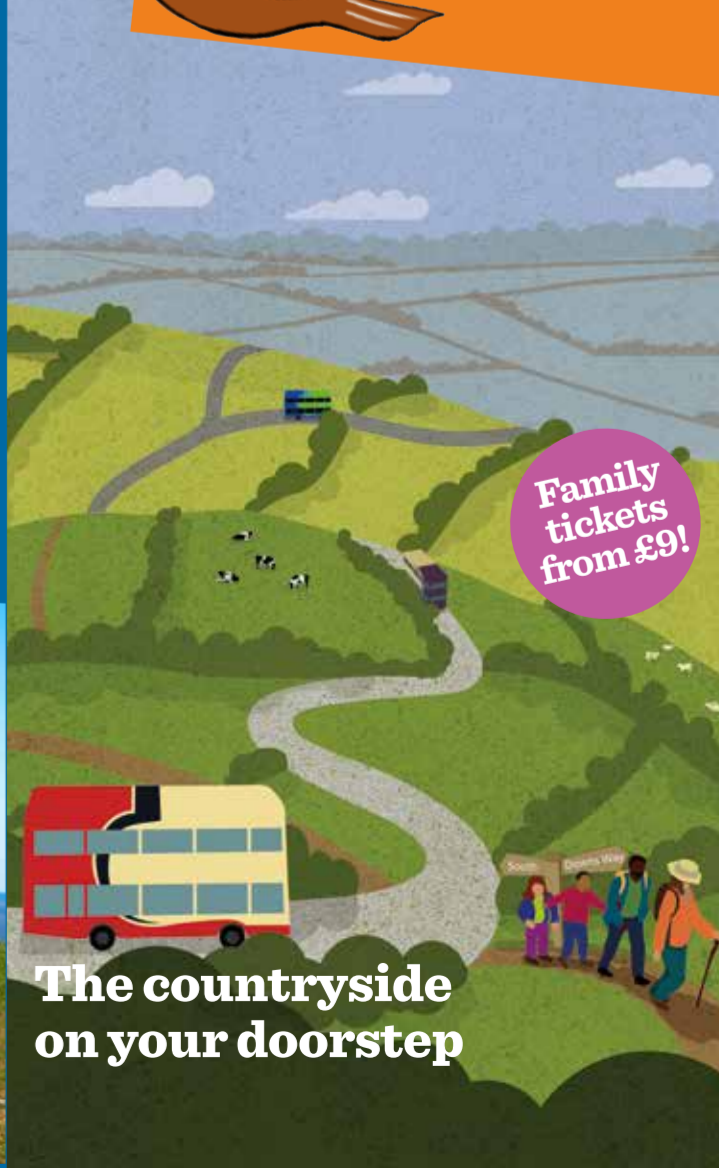
6491 Brighton & Hove City Council Communications Team

Spot illustrations: Monica Gates and Jo Offer

Brighton & Hove City Council

breeze up to... the Downs and beyond

Summer 2021



Family tickets from £9!

The countryside on your doorstep

Bus routes

Map also includes services not listed right and overleaf



Key

- 2, 78, 79, 28, 270, 29, 272, 77
- Southdowns Way
- Bluebell Railway

For routes in grey go to www.travelinesoutheast.org.uk

Devil's Dyke - catch the Breeze 77



Devil's Dyke is just a stunning 30-minute bus ride from Brighton city centre, with delightful downland views along the way. There's so much you can enjoy at Devil's Dyke and, whatever you choose to do, you'll be surrounded by picturesque scenery. This is an ideal place for a lazy summer picnic and a spot of kite-flying! Above all, Devil's Dyke is the gateway to the South Downs. It's just a bus ride away.



Wonderful walks from Devil's Dyke

Devil's Dyke to Upper Beeding
Follow the South Downs Way west for approximately four miles to Beeding Hill then 3/4 mile north-west down the hill to the High Street in Upper Beeding. Then take the number 2 bus back to Brighton.

Devil's Dyke to Patcham
Take the Sussex Border Path east and then south-east for approximately three miles to Patcham. Catch a 5A bus from Old London Road to Churchill Square in Brighton.

The National Trust also hosts a variety of events, including open days at ancient **Saddlescombe Farm** - a lovely 30-minute walk east from Devil's Dyke along the South Downs Way.

The WildFlour Cafe at Saddlescombe Farm is open Tuesday to Sunday, 10am-5pm, between March and the end of October, and weekends only in November. All drinks, cakes and meals are homemade. Simply show a valid bus ticket or pass and get 10% off food and drink. A range of leaflets about the area, and ideas for walks or activities, is available from the National Trust information point at Devil's Dyke or contact **01273 857712** www.nationaltrust.org.uk/devils-dyke



Route 77

The 77 runs daily between Brighton and Devil's Dyke until 30 August, then every Saturday, Sunday and bank holiday throughout the year.

Buses run up to every 45 minutes (summer) and up to every 75 minutes (winter).

There are later summer evening buses too!
Special Offers!
£5 'Breeze Return' - but walkers can also use this ticket to return from Ditchling Beacon or Stanmer Park.

Up to two children (under 16) go **FREE** when travelling with an adult.



Stanmer Park



Breeze up to a stunning countryside estate nestled in the South Downs National Park.

www.brighton-hove.gov.uk/stanmerpark
www.southdowns.gov.uk

Stanmer Park lies in the heart of 'The Living Coast', recognised by UNESCO as a world Biosphere region connecting people and nature. www.thelivingcoast.org.uk

Stanmer Park Restoration Project

In the 18th Century the Pelham family bought the Estate and employed master mason Nicholas Dubois to re-design the iconic Stanmer House. Across the green sits a picturesque church and village pond.

In the historic core is the restored Walled Garden. Formerly Stanmer House's kitchen garden, it's been transformed through the Project by Plumpton College into One Garden Brighton, an exciting new accessible public attraction. www.onegardenbrighton.com

Access enhancements elsewhere include a disabled toilet in a new information and welcome kiosk at the Lower Lodges.

There are new pathways and trails and pavements, an off-road route alongside the central roadway, cycle parking, plus a new playground.

www.brighton-hove.gov.uk/stanmerproject

Enjoy Stanmer to the full
Extra education, learning and volunteering opportunities are coming, adding to existing park events and activities such as Healthwalks www.brighton-hove.gov.uk/healthwalks, and Earthship Brighton tours www.lowcarbon.co.uk.



Route 78

Runs between Brighton and Stanmer Park every Saturday, Sunday and bank holiday throughout the year (except 25 December), approximately hourly

Special Offers!
• £5 'Breeze Return' - but walkers can use this ticket to return from Devil's Dyke or Ditchling Beacon.

• Free travel for journeys that are within the park (e.g. Stanmer Park entrance to Stanmer Village)

• Up to two children (under 16) go **FREE** when travelling with an adult.

Bus 78 runs through Stanmer Park and up to Stanmer Village - for One Garden Brighton.

In Stanmer Park buses will stop anywhere, where it is safe to do so. The last stop is Stanmer Village, by the farm building opposite the church.

Bus routes 23 and 25 will drop you at the Lower Lodges entrance to Stanmer Park and run frequently, seven days a week.

Ditchling Beacon



The 30-minute bus ride to Ditchling Beacon is extremely scenic, with wide-ranging downland views from your top deck seat. In the distance you can even see the Chattri memorial to Indian soldiers. Once at Ditchling Beacon there are many possible walks east or west along the South Downs Way National Trail - or just take in the stunning views and catch the next bus back!

Ditchling Beacon has spectacular views across the Weald. It was an Iron Age hillfort; the steep northern slope formed a natural defence. Ditchling Beacon was one of the chain of fires lit to warn of invasions such as the Spanish Armada.

It is now managed by the National Trust and Sussex Wildlife Trust.



Walks

Ditchling Beacon to Stanmer Park (2.8 miles)
From the car park cross the road and follow the South Downs Way to the east, soon turning right onto a bridleway heading downhill. From Stanmer Village catch the 78 bus back to Brighton.

Ditchling Beacon to Ditchling Village and Hassocks
Footpaths, tracks and lanes will take you on a scenic descent to picturesque Ditchling Village (approx. 2 miles). From Ditchling Village it's then a 2-mile walk to Hassocks Station, with frequent trains back to Brighton or to London.

Ditchling Beacon to Patcham
Take the South Downs Way west for about one mile, then turn south west and follow the Sussex Border Path for about 2.5 miles down to Patcham. Catch bus 5A from Old London Road to Brighton's city centre.

Ditchling Beacon to Devil's Dyke
Catch the weekend-only 79 bus to Ditchling Beacon. From the bus stop, walk west along the South Downs Way for about six miles to Devil's Dyke, via Saddlescombe. At the top of the Dyke, turn right along the road to the 77 bus stop (opposite the Devil's Dyke pub).

Route 79

Runs between Brighton and Ditchling Beacon every Saturday, Sunday and bank holiday throughout the year (except 25 December), approximately hourly.

Special Offers!
• £5 'Breeze Return' but walkers can also use this ticket to return from Devil's Dyke or Stanmer Park.

• £3.20 return from London Road shops or any bus stop on Ditchling Road.

• Up to two children (under 16) go **FREE** when travelling with an adult.

