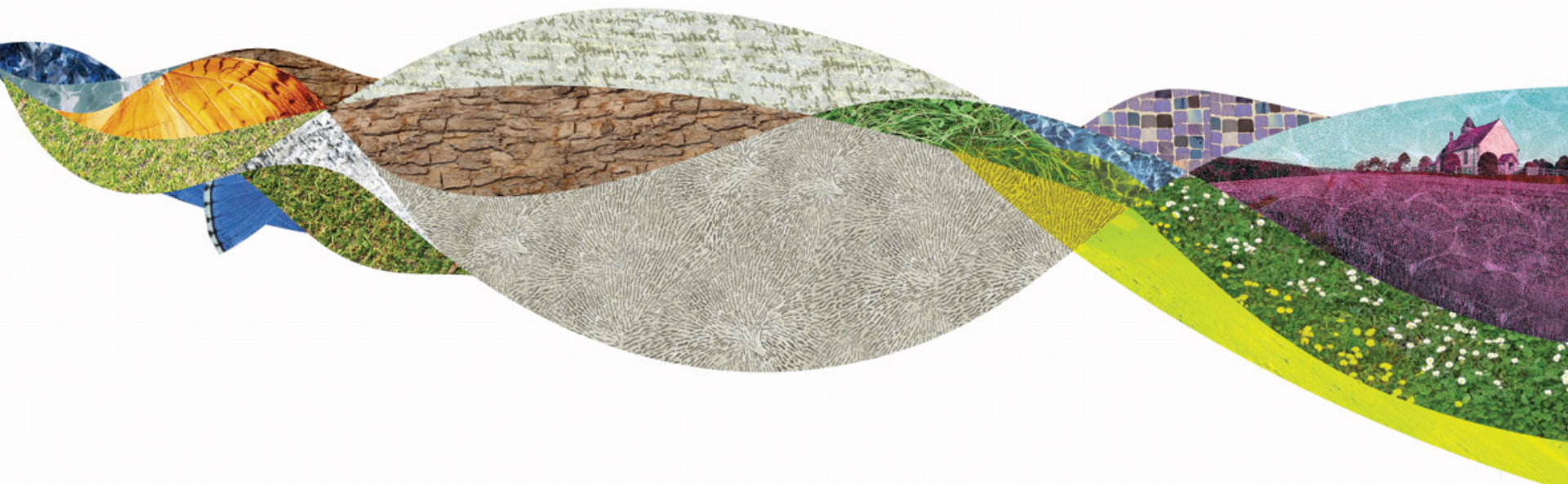


How Planning helps deliver the Partnership Management Plan

Policy and Resources Committee – 15 July



Partnership Management Plan (PMP)

- The PMP 2020-2025 is a material consideration in the determination of planning applications
- Used proportionally and appropriately – unlikely to be key issue in a householder extension
- PMP is often referenced, after the National Park's statutory purposes and Local Plan, by Planning Inspectors
- In addition to the PMP Vision and 10 Outcomes the PMP identifies 5 Major Issues:
 - Climate Emergency
 - Economy
 - Wellbeing
 - Biodiversity
 - New Housing and Infrastructure



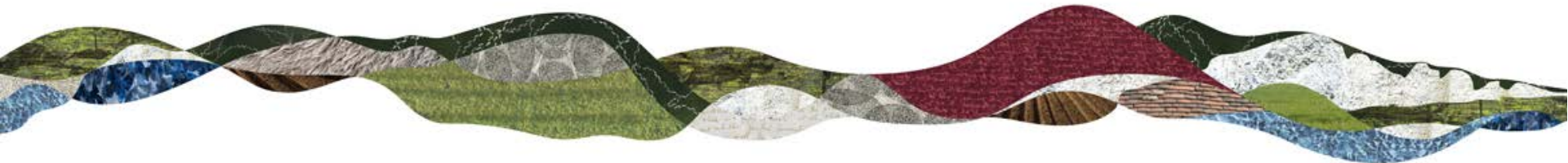
The Climate Emergency

- Heather Close, West Ashling. 17 dwellings
- 2 Passive homes
- 41-50% reduction in CO₂ emissions compared to Building Regulations
- Electric vehicle charging points for all dwellings
- Low water use, Green roofs, new Green Infrastructure, pollinator friendly planting
- 50% affordable housing



Economy

- Recent consents at Glyndebourne have included a new Production hub that brings all the opera production elements (set design, scenery making, costumes, wig making, make-up) under one roof
- Also a new dining pavilion has been permitted to provide additional facilities for visitors.
- This makes use of waste materials from within the site including wine corks, oyster shells and timber from ash dieback



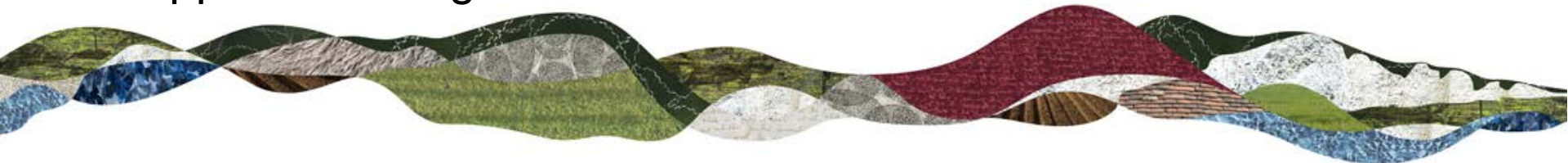
Wellbeing

- Goodwood Seeley Copse Education Centre
- Replaces previous poor and inadequate accommodation and allows children to experience the National Park
- Facilitates year round outside classroom learning
- Also supported by a SDNPA CIL grant of £40k



Biodiversity

- Plumpton College, planning application for extensive new and replacement campus buildings including new teaching facilities and student accommodation
- Several thousand square metres of new development
- Over 50% biodiversity net gain
- College plays an important role in local economy and supports farming



New Housing and Infrastructure

AUTHORITY MONITORING REPORT 2020

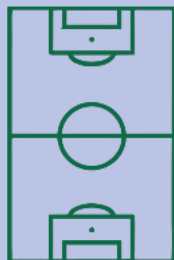
A THRIVING LIVING LANDSCAPE

An increase equivalent to:

81

FOOTBALL PITCHES

...of **chalk grassland** in favourable condition last year



19%
INCREASE

...in **lowland heath** in a favourable condition over the last three years



© Natural England copyright



SATELLITE FIRST

For the first time

In our AMR we are using satellite data from our Earth Observation to report on land cover across the National Park

In future years we will be able to use this data to see changes in land cover

PEOPLE CONNECTED WITH PLACES

156 **NEW CAMP SITE PITCHES**
...were permitted



2km **PATHS FOR PEOPLE**
... were created



1 **BESPOKE BRIDGE**
... **permitted** over a railway line to a valued cultural heritage space



TOWARDS A SUSTAINABLE FUTURE

282 **NEW HOMES**
...were completed



of which:
62 **WERE AFFORDABLE**



7,785 **SQUARE METRES**
...of **new employment floorspace** completed



159 **SOLAR PANELS**
...were permitted



SOUTH DOWNS
NATIONAL PARK
CELEBRATING 10 YEARS

Thank You

