

PEOPLE AND NATURE NETWORK

BOOSTING NATURE AND DRIVING A GREEN ECONOMIC RECOVERY

Covering the South East region, the People and Nature Network aims to create a connected network of “green infrastructure” that makes havens for wildlife, supports local economies, helps to mitigate climate change and gives local people all the health and well-being benefits of a better natural environment.



WHAT IS GREEN INFRASTRUCTURE?

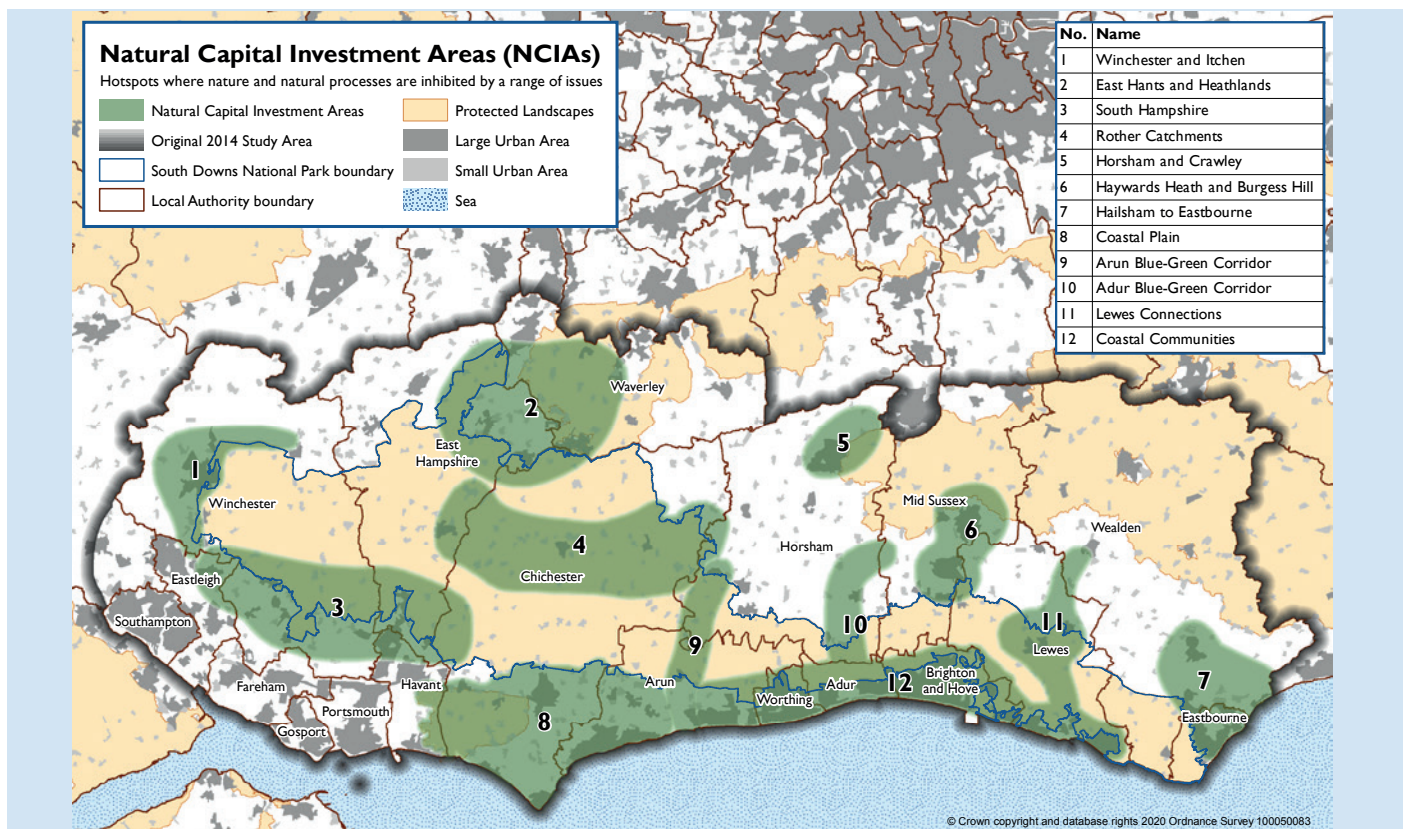
The term “green infrastructure” embraces the network of natural and semi-natural features, spaces and water courses that can be managed to deliver wide-ranging benefits for people and wildlife.

It can include parks, gardens, rivers and streams, roadside verges, street trees, hedgerows, churchyards, allotments and nature reserves as well as wider green spaces.

PARTNERSHIP WORKING

The People and Nature Network (PANN), has been produced in partnership with a range of organisations, including local authorities across Hampshire and Sussex and other interested parties such as RSPB, Wildlife Trusts, The Woodland Trust, English Heritage and the Environment Agency.

Twelve areas across the PANN region (see map below) – primarily on the edge or beyond the National Park’s boundaries – have been identified as key areas for long-term investment in more green infrastructure.



NATURE UNDER THREAT

Nature is working invisibly, every day, to keep our environment healthy for both wildlife and people. It provides us with clean water, fresh air, food to eat, and tranquil places to enjoy with our families.

Yet we can never take it for granted, as our natural environment is sadly under threat from climate change and global biodiversity decline, together with the fact that we're living in one of the most crowded parts of the UK.

Nature doesn't recognise administrative boundaries and that's why the **People and Nature Network** is such a vital piece of work – laying out our collective long-term ambition, at both a regional and national level, to promote more green infrastructure. That could be creating a wildflower meadow in an urban area, improving the greenery along a canal, laying a hedgerow or planting more street trees.

Every bit of this interconnected green network plays its part in supporting wildlife and also our communities, whether that be through boosting the tourism economy or just being an uplifting space for people to enjoy the natural world.

The PANN aims to make space for nature in urban as well as rural environments and create links with the National Park which already has over 1,000 nature conservation areas.

PANN TARGETS

PANN ties in with the Government's 25-year Environment Plan, which sets out a number of targets, including clean air and water, thriving plants and wildlife, and adapting to climate change. PANN also recognises that creating a healthier natural environment will bring economic benefits for the region, including reducing financial burden on health and social care, increasing visitor spending and increased desirability as a location for business.

The partnership will work towards its goals through a number of avenues, including encouraging green infrastructure in emerging planning policy, seeking more local and national funding and developing more community projects that help the environment.

"The COVID-19 pandemic has seen people from all areas re-connect with nature, giving many a new appreciation of how just valuable it is to our health and wellbeing. Now is the time to make the most of this renewed enthusiasm and start creating a better future for both people and nature."

Ian Phillips, Chair
South Downs National Park Authority

The People and Nature Network report can be read here:

southdowns.gov.uk/national-park-authority/our-work/partnership-management/people-and-nature-network-pann/

