

Our South Downs Education Network

learning@southdowns.gov.uk



The network offers...

Curriculum-linked sessions and activities that cover:

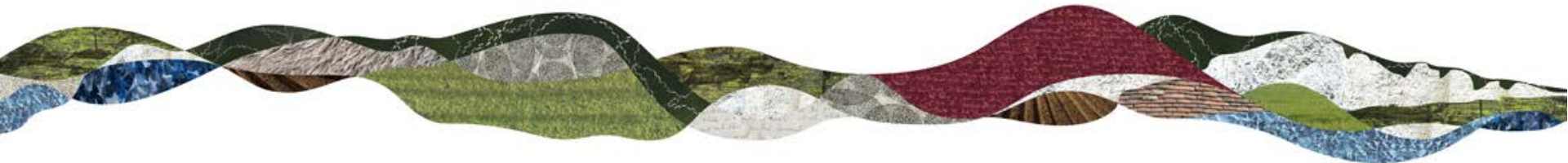
- Food and farming
- Wildlife and habitats
- Human history
- Art and literature
- Cultural heritage
- Health and wellbeing
- Adventurous activities
- *Residential trips*
(not currently possible)



Learning Outside the Classroom

Pupils (and staff) can benefit from:

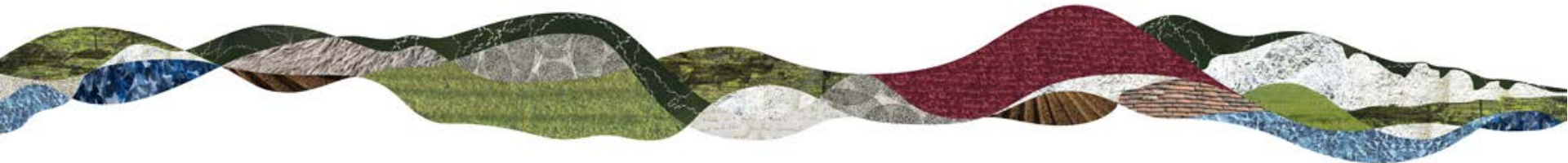
- new environments and perspectives
- exposure to a wider range of career opportunities
- dynamic learning environments
- exposure to nature
- hands-on learning opportunities



Making the most of it

Where to go for more information

- South Downs National Park website
 - www.southdowns.gov.uk/learning
 - learning@southdowns.gov.uk
- Outdoor Education Advisors at your local education authority
 - Brighton & Hove, Paula.Greening@brighton-hove.gov.uk, 01273 293642
 - East Sussex, Leanne.Bentley@eastsussex.gov.uk, 01273 482522
 - West Sussex, Simon.Whitmore@westsussex.gov.uk, 03302 227009
 - Hampshire, outdoor.education@hants.gov.uk, 01962 876218



Session aims



- Increased understanding of how food is produced and grown on the farm
- Increased appreciation of how farming is carefully managed to care for the environment
- Increased awareness of how farming and the countryside can enhance teaching across the school curriculum



What is LEAF Education?



For Teachers & Educators

Everything you need to deliver the curriculum through food and farming experiences — both on the farm and in classroom settings.

www.leafuk.org/education/for-teachers



Farming in action

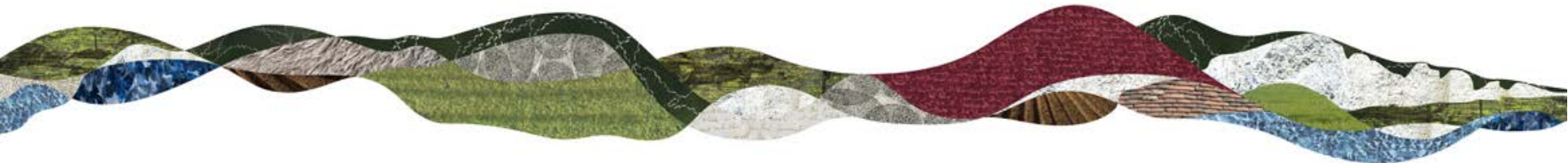


AVINGTON PARK FARM

[HOME](#) [FARM](#) [DIVERSIFICATION](#) [CONSERVATION](#) [LIVERY](#) [CONTACT US](#) [BLOG](#)



www.parkfarmavington.co.uk



Farming in your school grounds



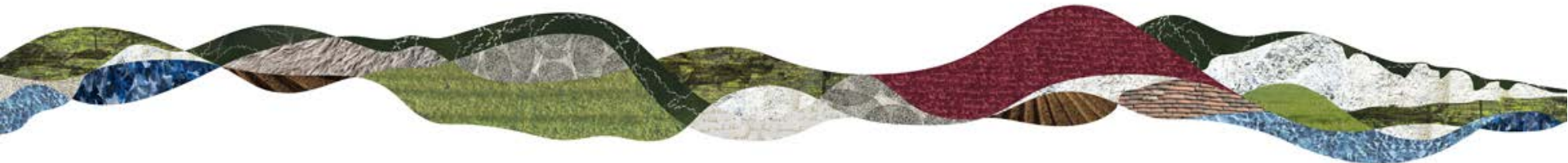
Resource Pack

Get Your Hands Dirty

A guide to growing plants and keeping animals in schools



The value of learning outside the classroom has been recognised by the Department for Education (DfE) with the publication of the Learning Outside the Classroom Manifesto, which opens with the following statement: “We believe that every young person should experience the world beyond the classroom as an essential part of learning and personal development, whatever their age, ability or circumstances.”



Farming in your school grounds



Resource Pack

Get Your Hands Dirty

A guide to growing plants and keeping animals in schools



There is a strong case for using school grounds to re-engage young people with the natural world and its processes, giving young people a greater understanding of plants and animals while importantly improving motivation, behaviour, attitudes and values, and raising achievement as an essential part of a strategy for school improvement....

- Improve academic achievement
- Improve young people's attitudes to learning
- Make learning more engaging and relevant to young people
- Reduce behaviour problems and improve attendance
- Stimulate, inspire and improve motivation
- Develop active citizens and stewards of the environment
- Nurture creativity



Learning opportunities

Art & Design

- Record from experience
- Collect visual and other information
- Design and make images and artefacts
- Investigate art, craft and design in the locality

ICT

- Find, classify and check information
- Think about content and quality when communicating information
- Investigate and compare uses of ICT

PE

- Follow trails in unfamiliar environments
- Physical activity is good for health and well-being

PSHE & Citizenship

- Talk about and explain opinions, views and issues
- The range of jobs carried out
- Recognise the role of voluntary, community and pressure groups
- What makes a healthy lifestyle

Cooking and Nutrition

- Understand and apply the principles of a healthy and varied diet
- Prepare and cook a variety of dishes using a range of cooking techniques
- Understand seasonality, know where and how a variety of ingredients are grown, reared, caught and processed

Geography

- Observe and record
- Use fieldwork skills
- Recognise changes in the environment
- Collect and record evidence
- Recognise physical and human processes

History

- How to find out about the past
- Ask and answer questions about the past
- Investigate how an aspect in the local area has changed

Drama

- Create, adapt and sustain different roles
- Use character, action and narrative
- Use dramatic techniques

English

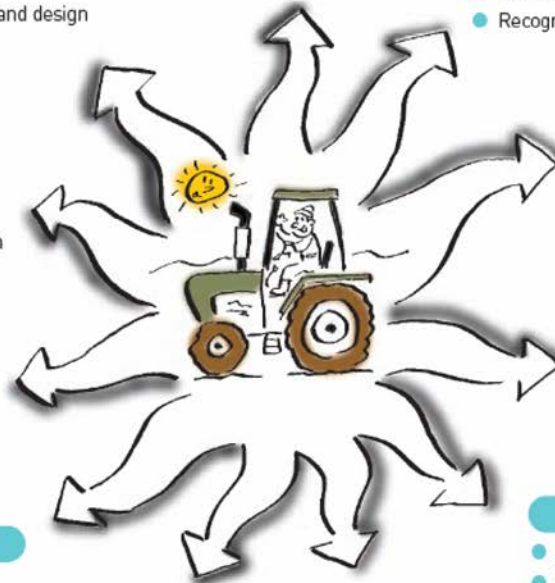
- Ask questions to clarify understanding
- Take different views into account
- Qualify or justify what you think
- Review and comment

Mathematics

- Select and use handling data skills
- Select and use appropriate calculation skills
- Interpret tables, lists and charts

Science

- Life processes common to plants
- Life processes in familiar animals and plants
- Protection of living things and the environment
- Identify locally occurring animals and plants
- Use food chains



Home

Resources

Places to visit

People to ask

Blog

About us

My Account

COUNTRYSIDE CLASSROOM

Connecting schools with **food**,
farming and the **natural environment**

Search for resources

Search for a resource



☒ Resources

☐ Places to visit

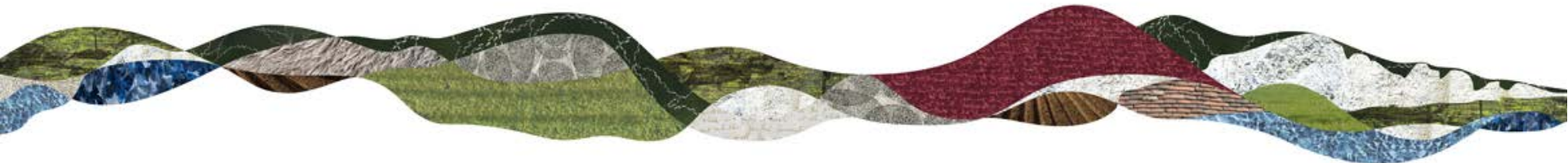
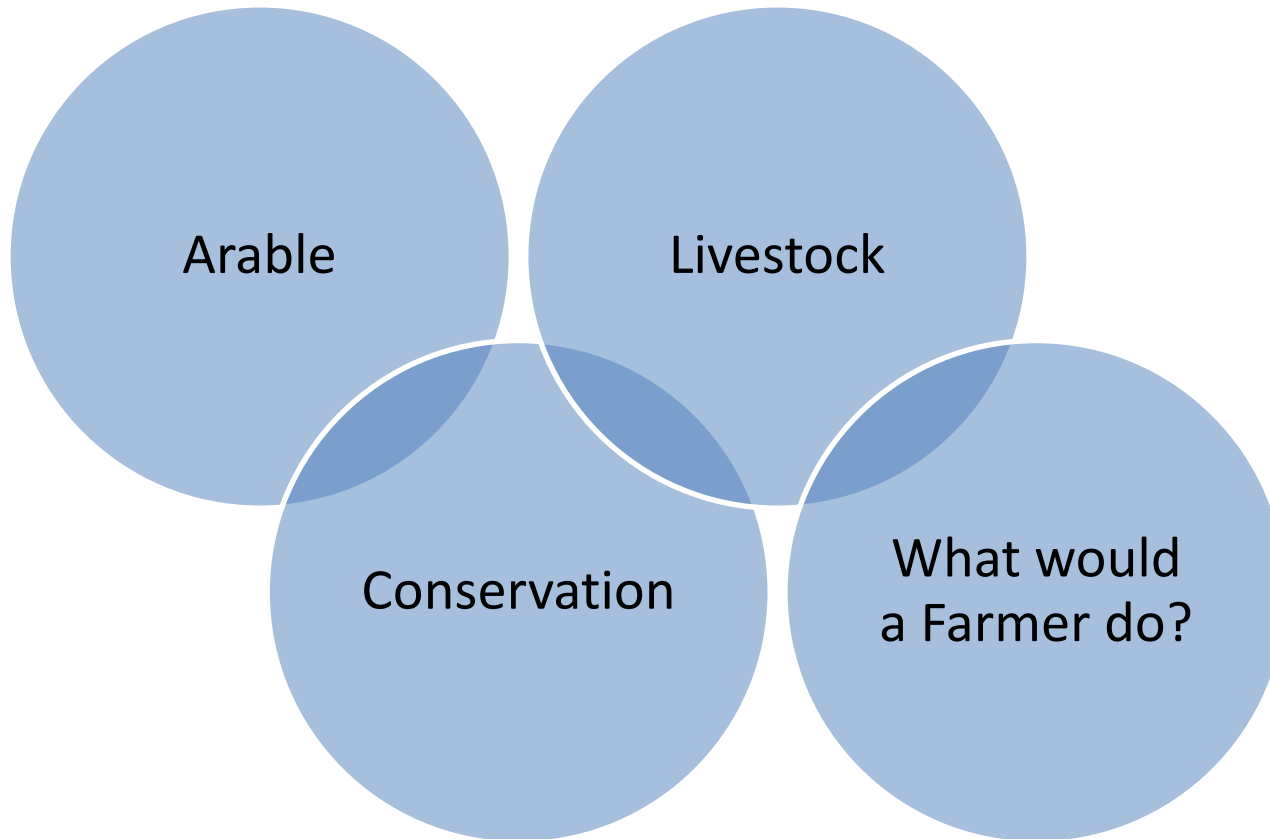
☐ People to ask



SIGN UP
for our newsletter
IT'S AS EASY
AS PIE!

www.countrysideclassroom.org.
uk

Farming in your school grounds



Arable farming in your school grounds

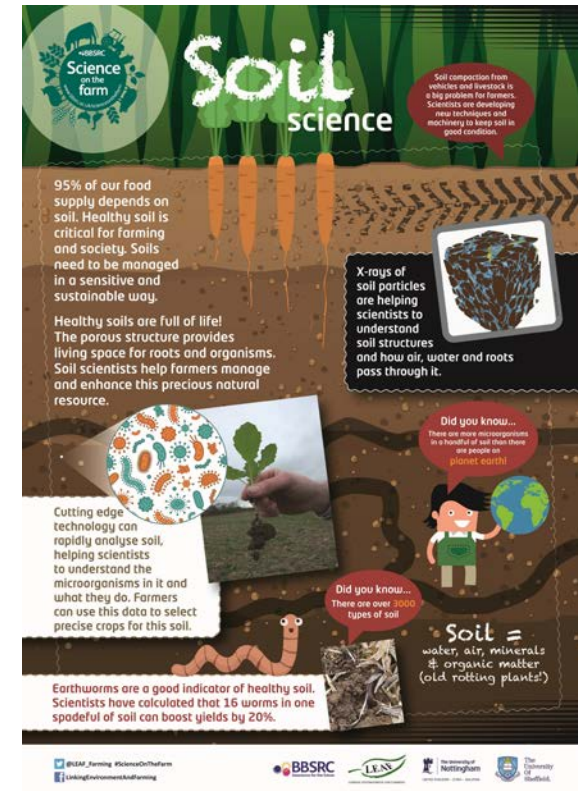
Rocks and Soils



LEAF Education
Stoneleigh Park
Warwickshire CV8 2LG

Soil is the most important resource for any farmer:

- Use scientific methods to assess the soil at school
- Is it the same everywhere?
- Compare with other types
- What lives in the soil and why?
- How do Farmers care for the soil?
- Make your own soil
- Use soil to create artwork





Arable farming in your school grounds





Livestock farming in your school grounds



Areas created especially for wildlife



www.leafuk.org | Twitter: @LEAF_Farming @LEAF_Education @OpenFarmSunday | education@leafuk.org



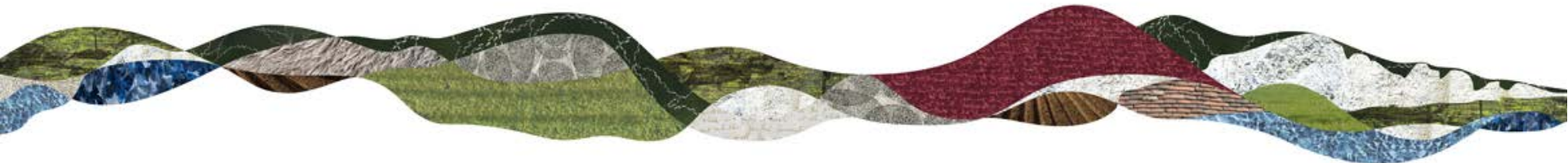
Make a deluxe hedgehog house

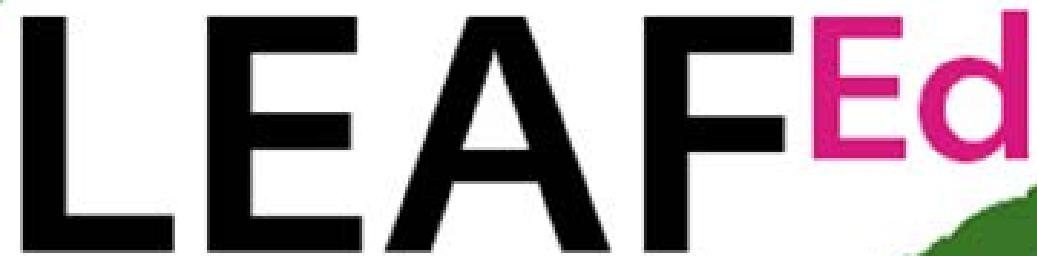


Conservation in your school grounds



What would a farmer do?





LEAF^{Ed}

What's next?