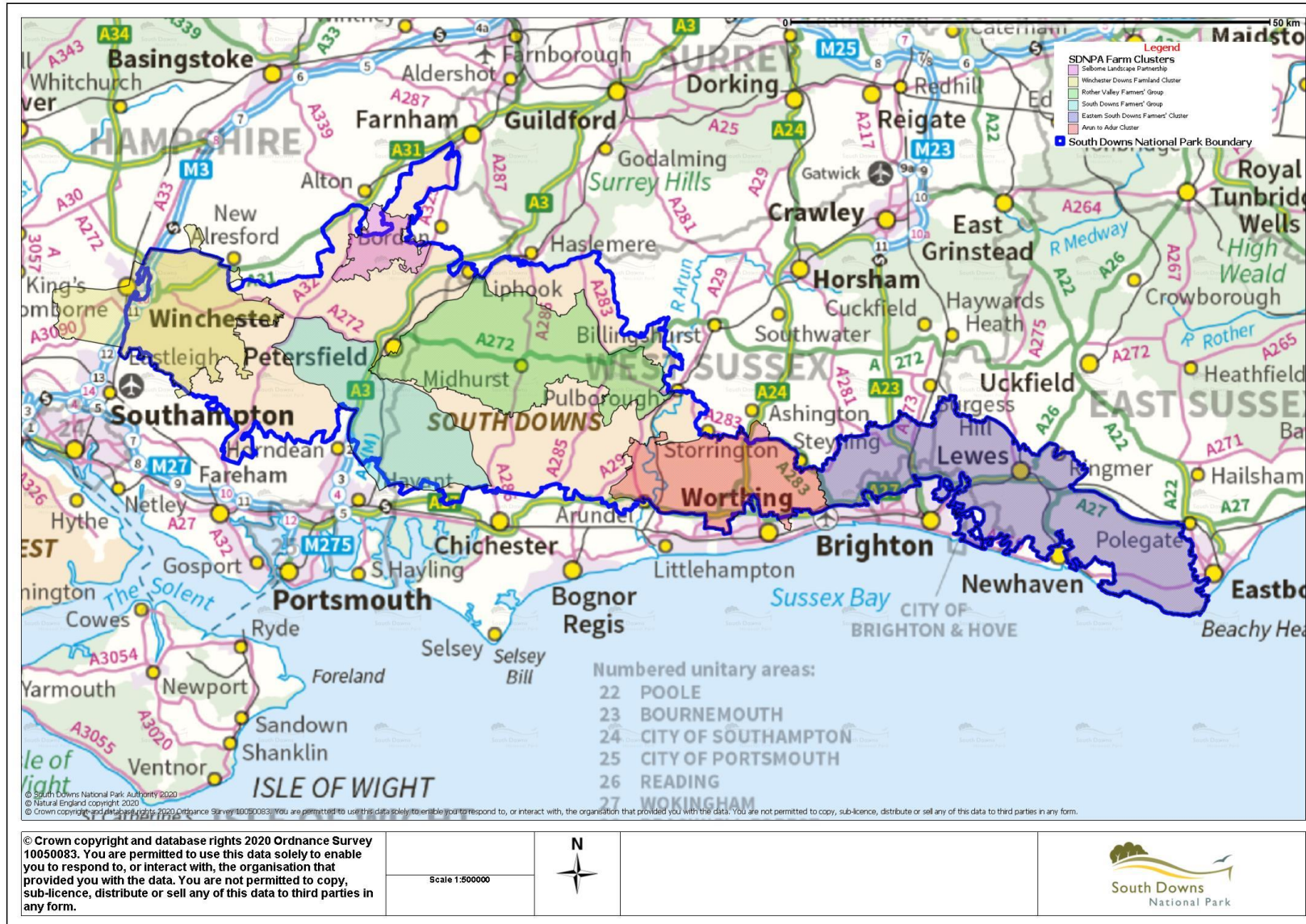


# Farm Cluster Groups in the South Downs National Park



# Farm Cluster Groups in the South Downs National Park

- Self forming, farmer-led and autonomous
- Groups run by a Facilitator and a steering group
- Group objectives selected by farmer members (PMP outcomes 1, 2 and 3)
- A good way for the SDNPA to engage with the farming community
- We can facilitate/inform projects where appropriate
- RISK – initial Countryside Stewardship Facilitation Fund ends in 2020/21
- Groups will need to identify future funding opportunities