

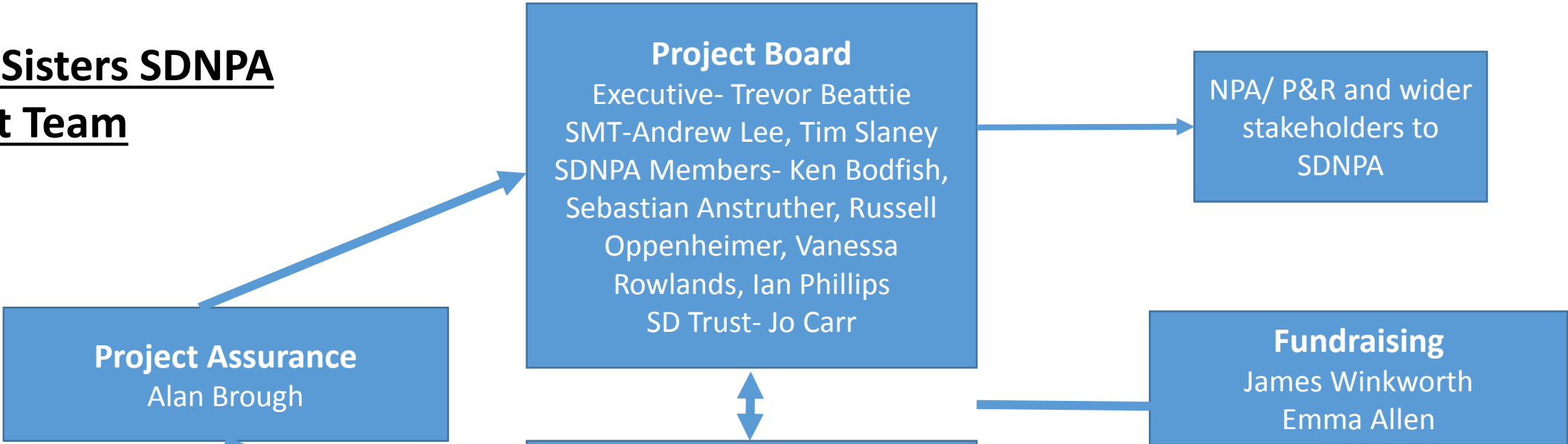
# P&R committee

27<sup>th</sup> February 2020

Seven Sisters Country Park



**Seven Sisters SDNPA**  
**Project Team**



# Work completed

- Architect drafting plans for Phase 1
- Architect scope of works extended to include Visitor Centre
- 2 Residents consultation events held (250 people engaged with)
- Further evidence survey for Visitor Centre commissioned
- Draft Heads of Terms received and responses/clarification sent back to ESCC
- Signage and Interpretation contract awarded
- Landscape consultant contract awarded
- Farming Tenancy queries resolved
- Retail consultancy report completed
- Volunteers at SSCP report completed
- Accommodation staffing proposal report completed
- Meetings
  - Held with Saltmarsh Farmhouse Café/B&B
  - Meetings arranged with SWT
  - Arrange to meet ESCC to discuss Exceat Bridge
  - HR to meet with ESCC HR to discuss TUPE and meetings with Rangers.

# Residents Consultation Events

- 250 attendees over two days
- Wide range of attendees, councillors, residents, volunteers, visitors, lots of dogs.
- Lacking in diversity
- Key issues: Road safety, Cuckmere flooding, Visitor Centre opening hours and better café facilities.
- Responses collated and considered in Phase 1 proposals
- Continued engagement proposed in overall comms plan.



# Major funding next steps

- Unsuccessful with Heritage Horizons for £13million ask – no feedback available
- Lottery application windows now quarterly. Up to £5m funding possible– still *highly* competitive
- EAFRD £170K funding for Holiday accommodation unsuccessful as considered to be ‘profit making’
- Resubmission to EAFRD for £170K for Visitor Centre refurbishment works
- <£50k – Veolia Trust or other landfill funder towards capital visitor items (only Exceat is eligible as there are distance limitations)
- SDNPA CIL application submitted for £500,000
- External CIL or S106 (e.g. Wealden DC) towards Changing Places toilets/other priority items ££?? Unknown
- SD Trust funded water refill stations for £2K each

