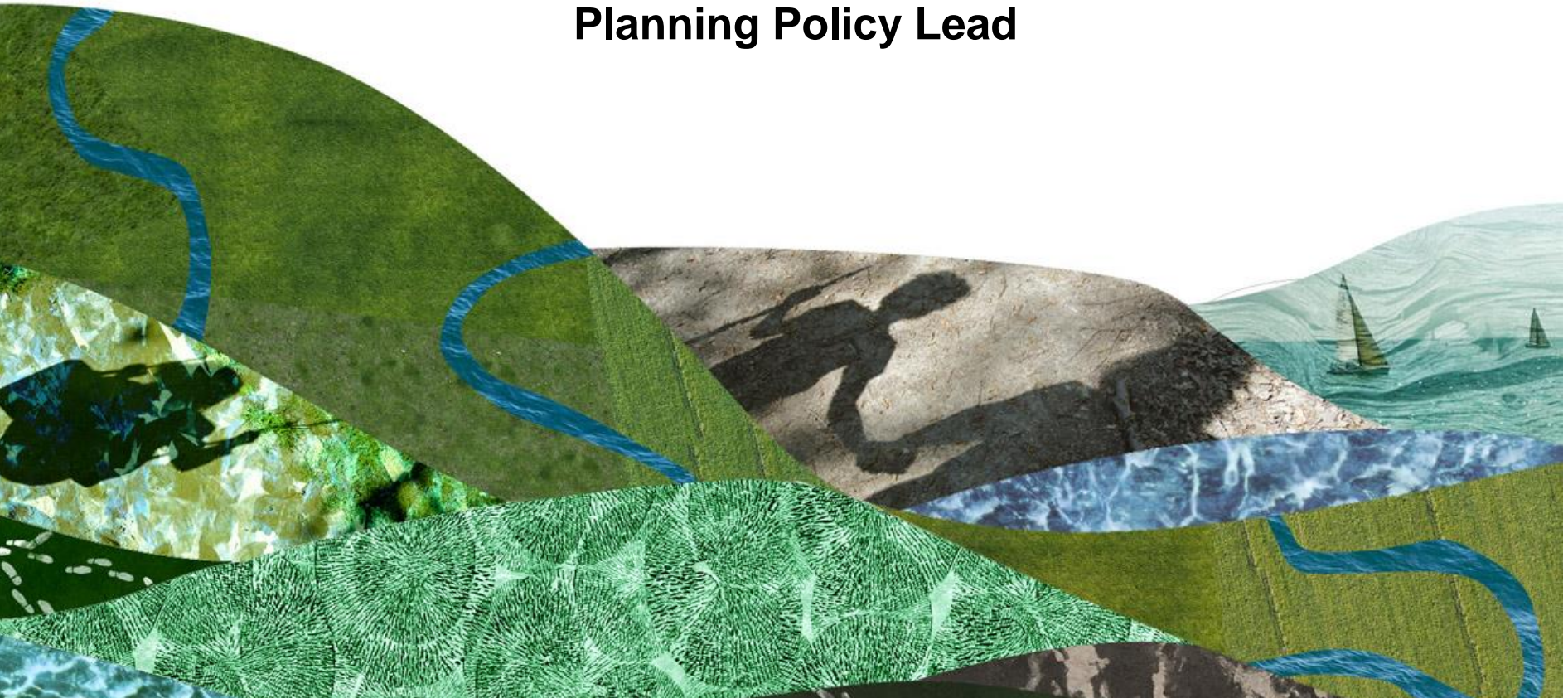


# South Downs Local Plan

## South Downs Parish Workshops

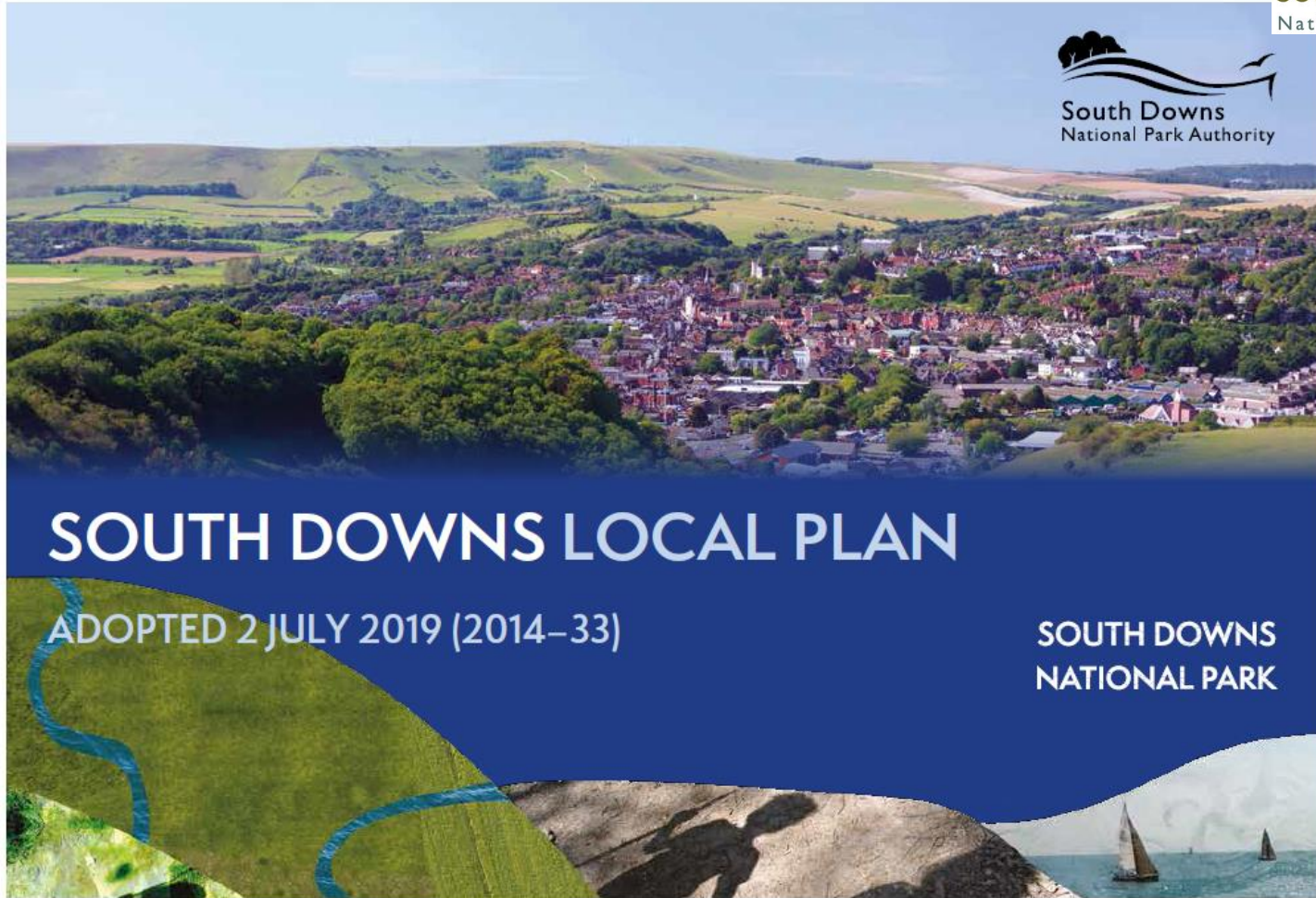
**Lucy Howard, Planning Policy Manager & Katharine Stuart,  
Planning Policy Lead**



# South Downs Local Plan

- ❖ The adopted Local Plan
- ❖ Ecosystem services & our landscape led approach
- ❖ Towards a Sustainable Future
- ❖ Implementation





# SOUTH DOWNS LOCAL PLAN

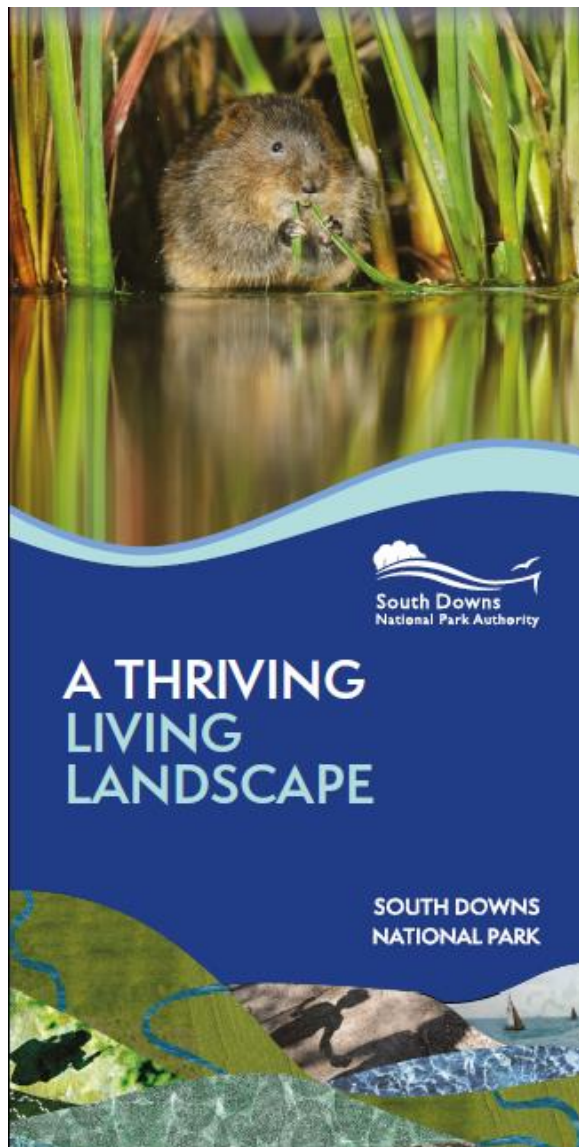
ADOPTED 2 JULY 2019 (2014–33)

SOUTH DOWNS  
NATIONAL PARK

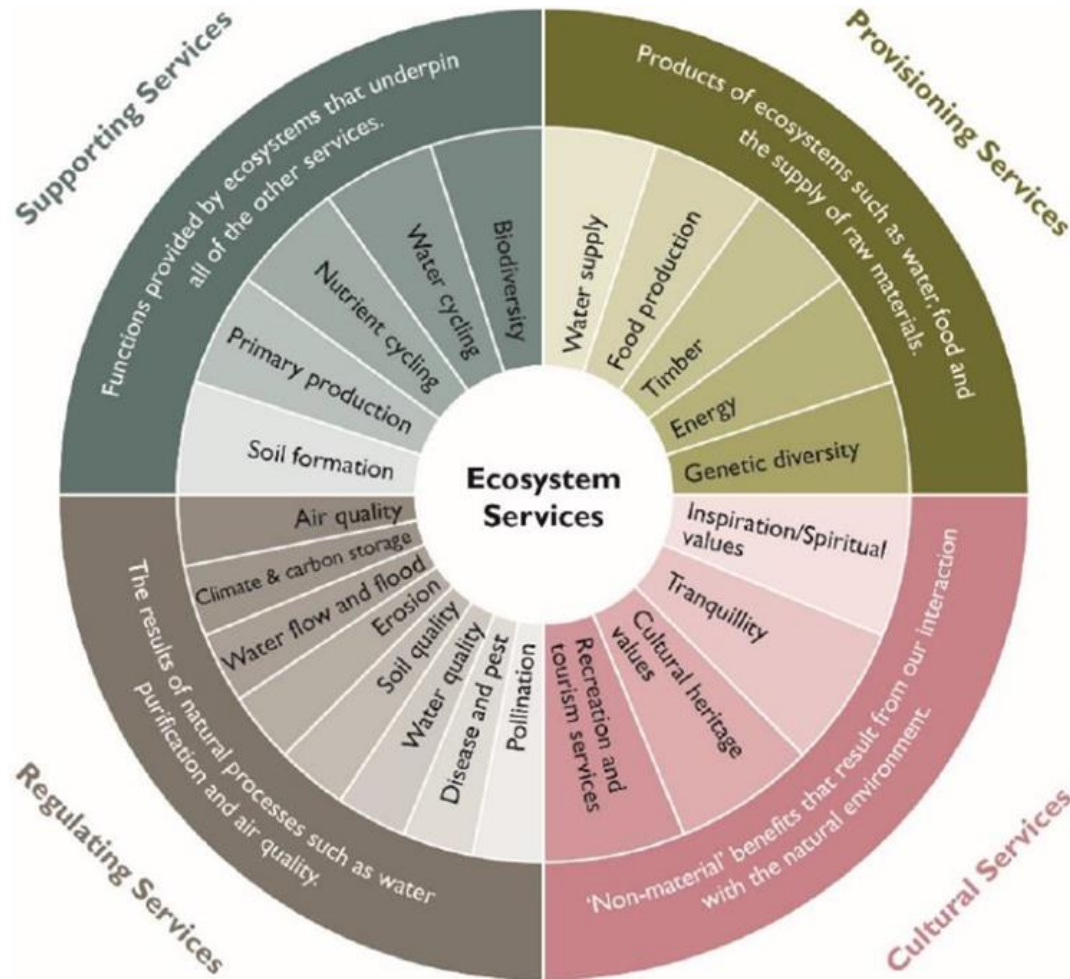


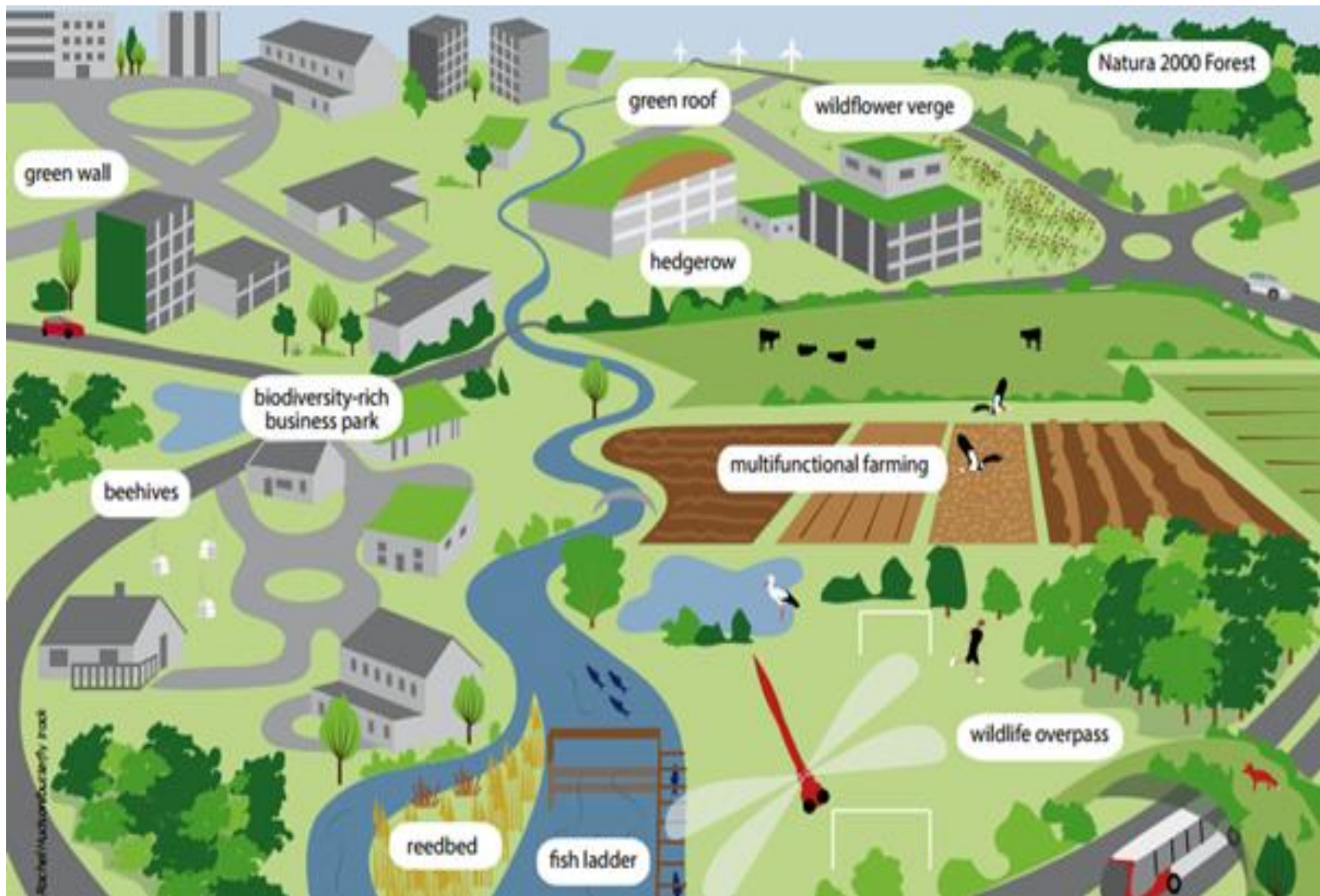
# Spatial strategy: 'A medium level of growth dispersed across the towns and villages of the National Park.'





# Ecosystem Services





# Landscape Character

## Landscape

*“An area, perceived by people whose character is the result of the action and interaction of natural and/or human factors”*

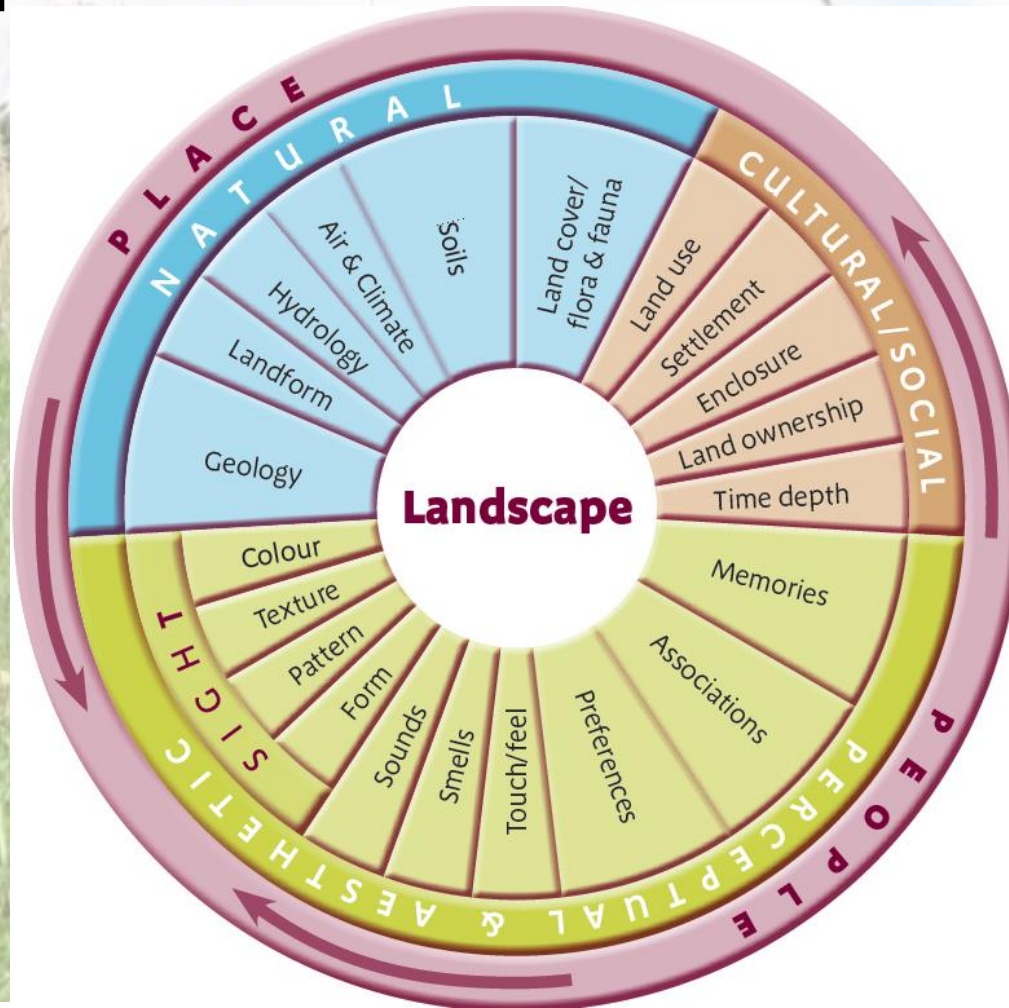
## Character

*“A distinct, recognisable and consistent pattern of elements in the landscape that makes one landscape different from another rather than better or worse.”*





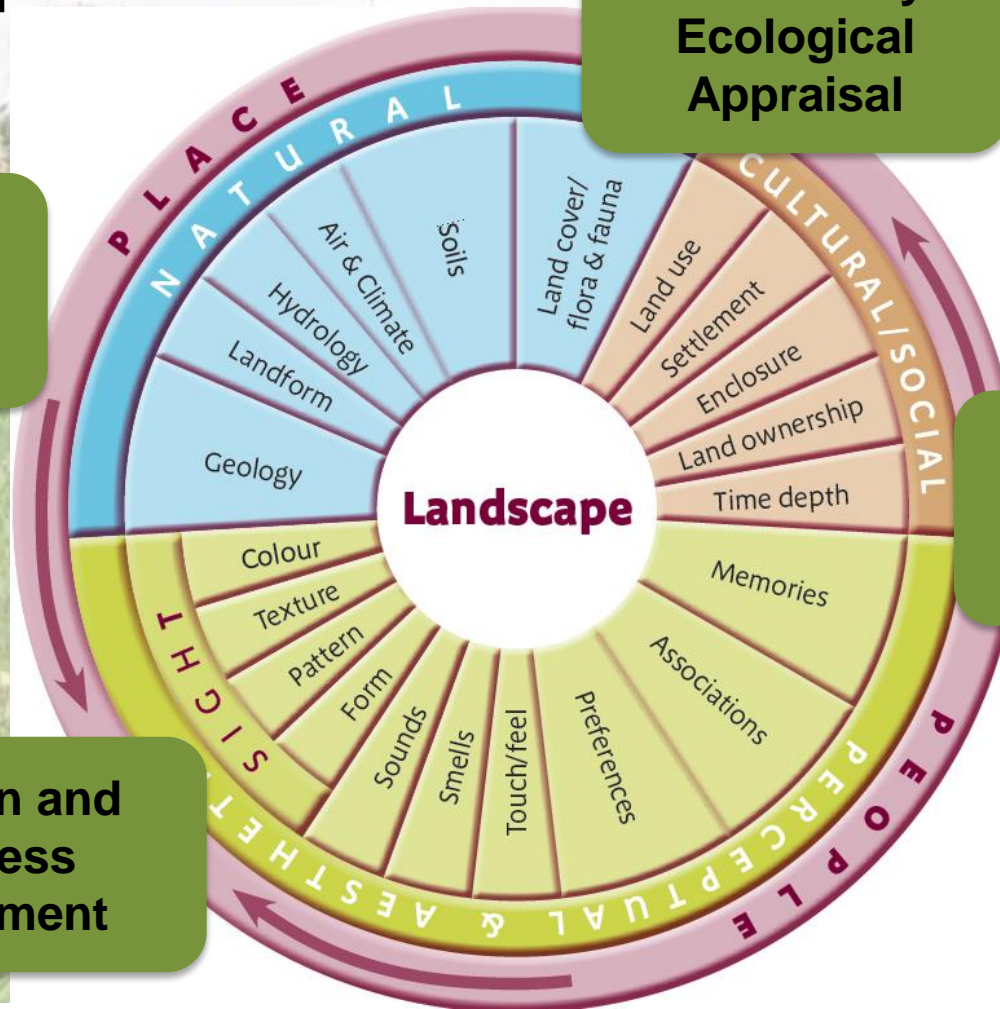
# Landscape Character



# Landscape-led

Preliminary  
Ecological  
Appraisal

Flood Risk  
Assessment



Heritage  
Statement

Design and  
Access  
Statement



# Landscape-led

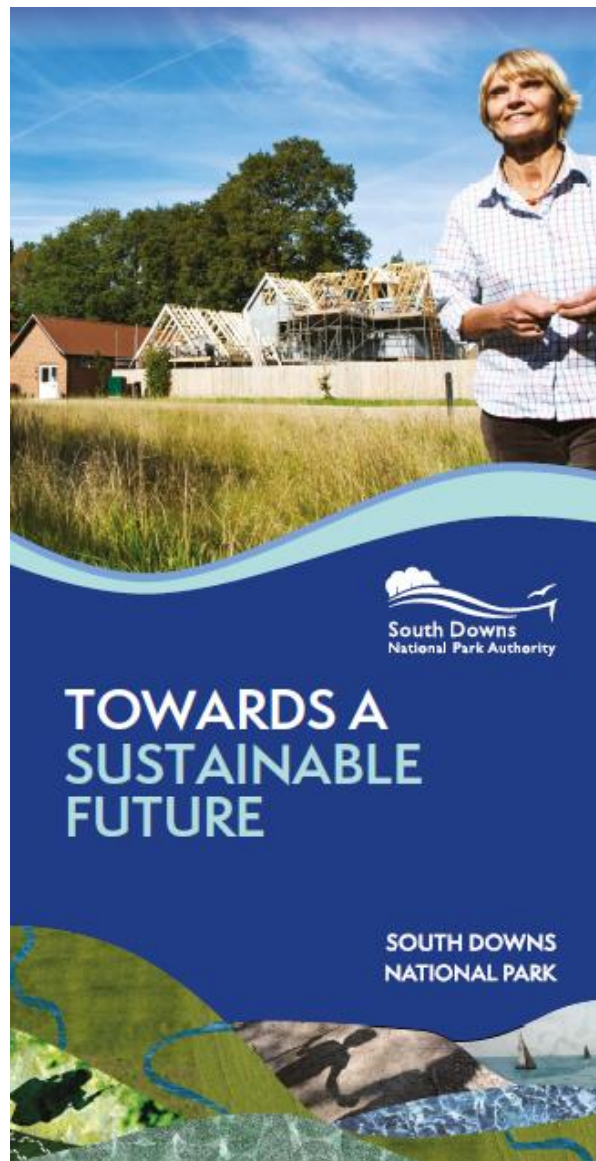


# Landscape-led

## Why take a landscape-led approach?

By bringing evidence together, we can ensure development will achieve **multiple benefits** for people and wildlife.





# Sustainable Development

- 4,750 dwellings 2014 – 2033
- 50% affordable housing
- Mix of homes
- 10.3 hectares employment land
- Town & village centres

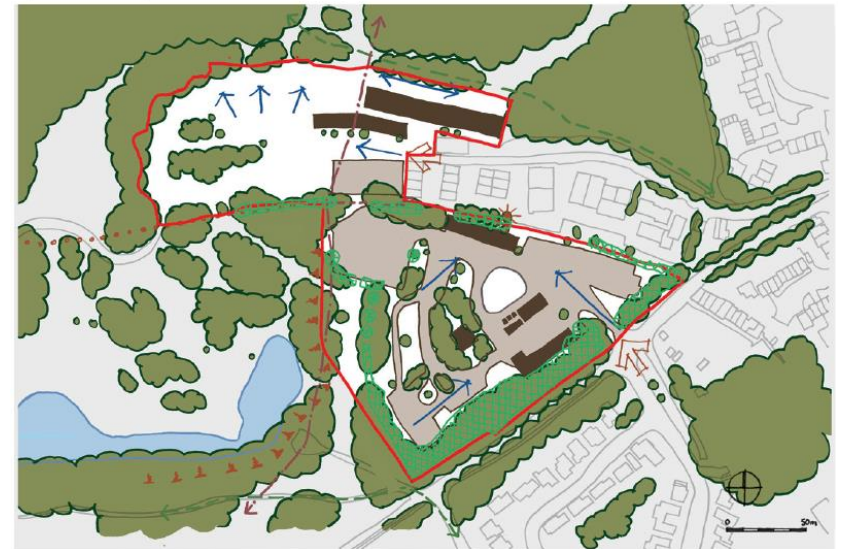


# Allocations



**From Site Allocation...**

**... to site analysis...**



**... to site design principles...**



# Implementation

- Extensions and Replacement Dwellings TAN
- Dark Skies TAN
- Ecosystem Services and Householder Planning Applications TAN
- Ecosystem Services Technical Advice Note (non-householder)

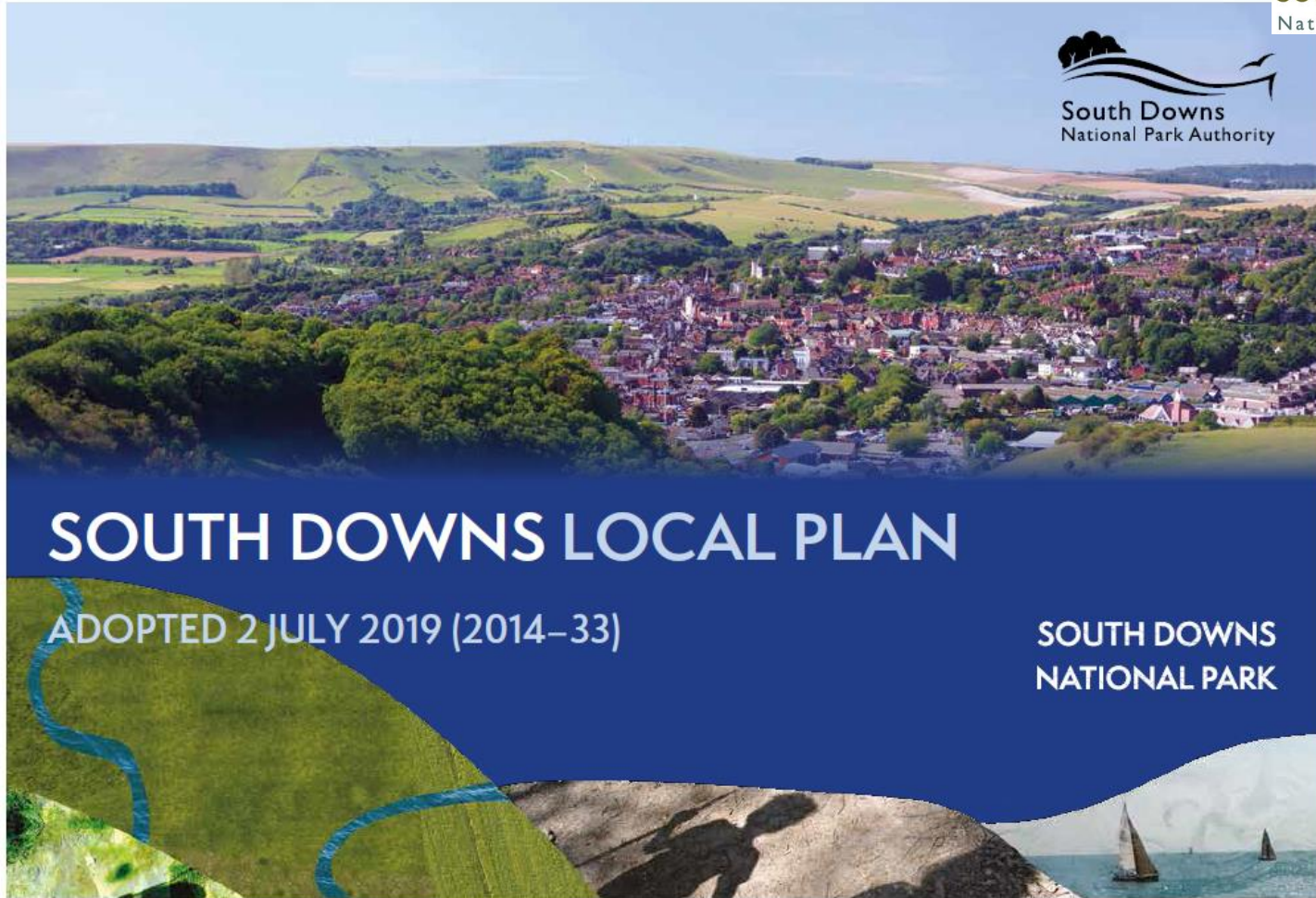




# Implementation

- Shoreham Cement Works AAP (consultation summer 2020)
- Affordable Housing SPD (consultation 24-09-19 to 19-11-19)
- Article 4 Directive (consultation 21-10-19 to 16-12-19)
- Sustainable Construction SPD (consultation December 2019)
- Design SPD (consultation summer 2020)
- Parking SPD (consultation summer 2020)





# SOUTH DOWNS LOCAL PLAN

ADOPTED 2 JULY 2019 (2014–33)

SOUTH DOWNS  
NATIONAL PARK



[planningpolicy@southdowns.gov.uk](mailto:planningpolicy@southdowns.gov.uk)

