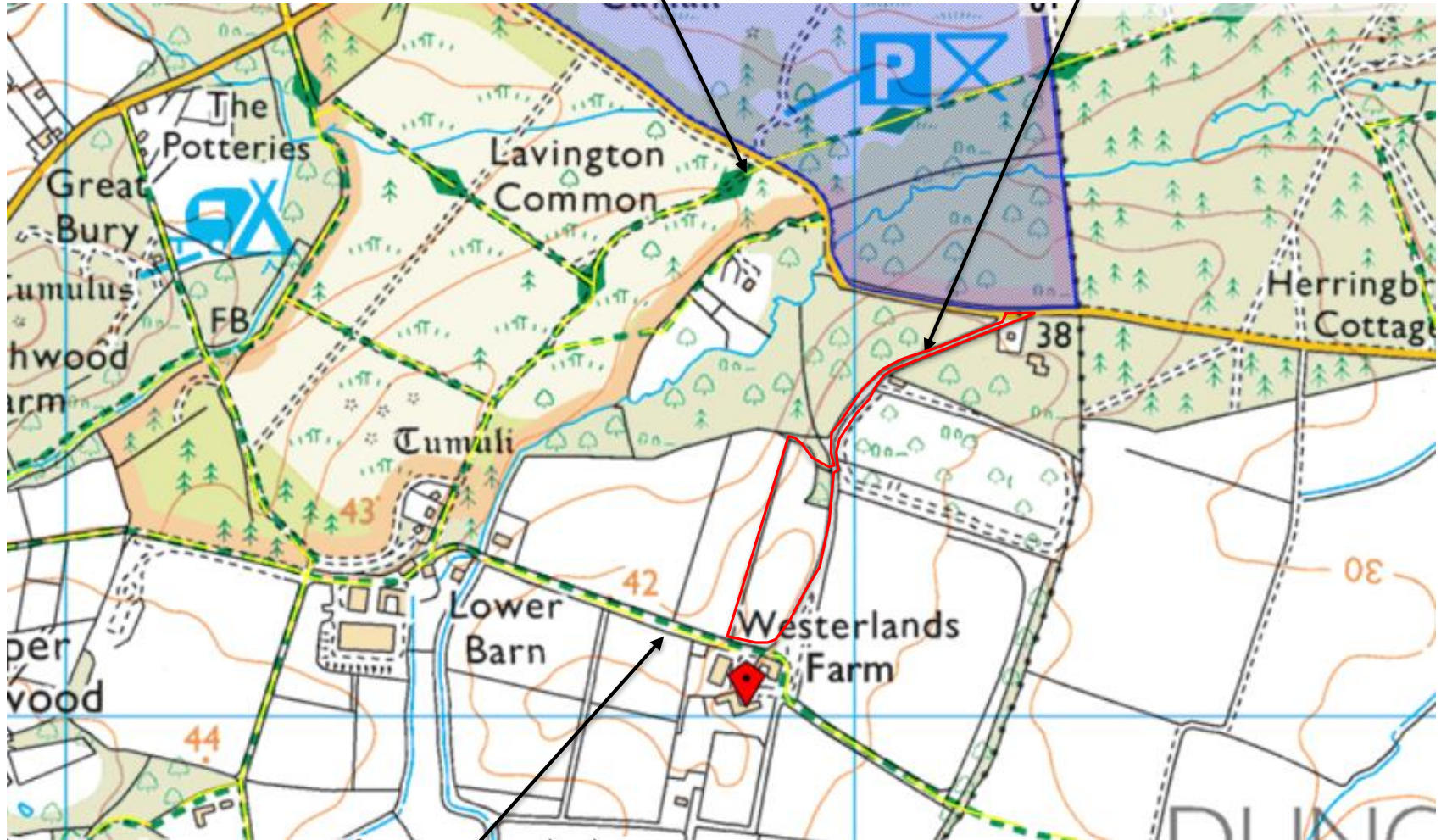




Site Location

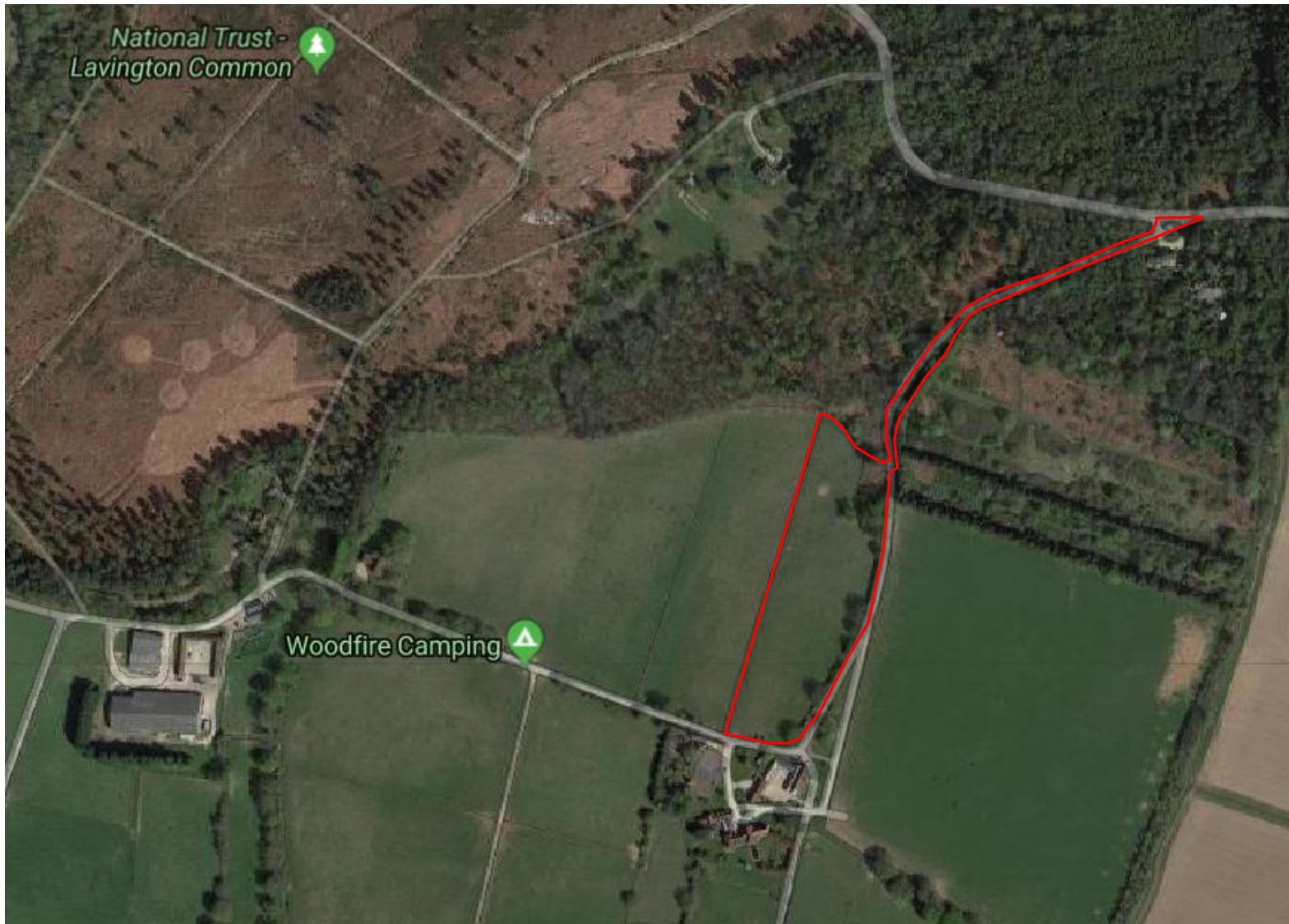
Serpent Trail

Access Track

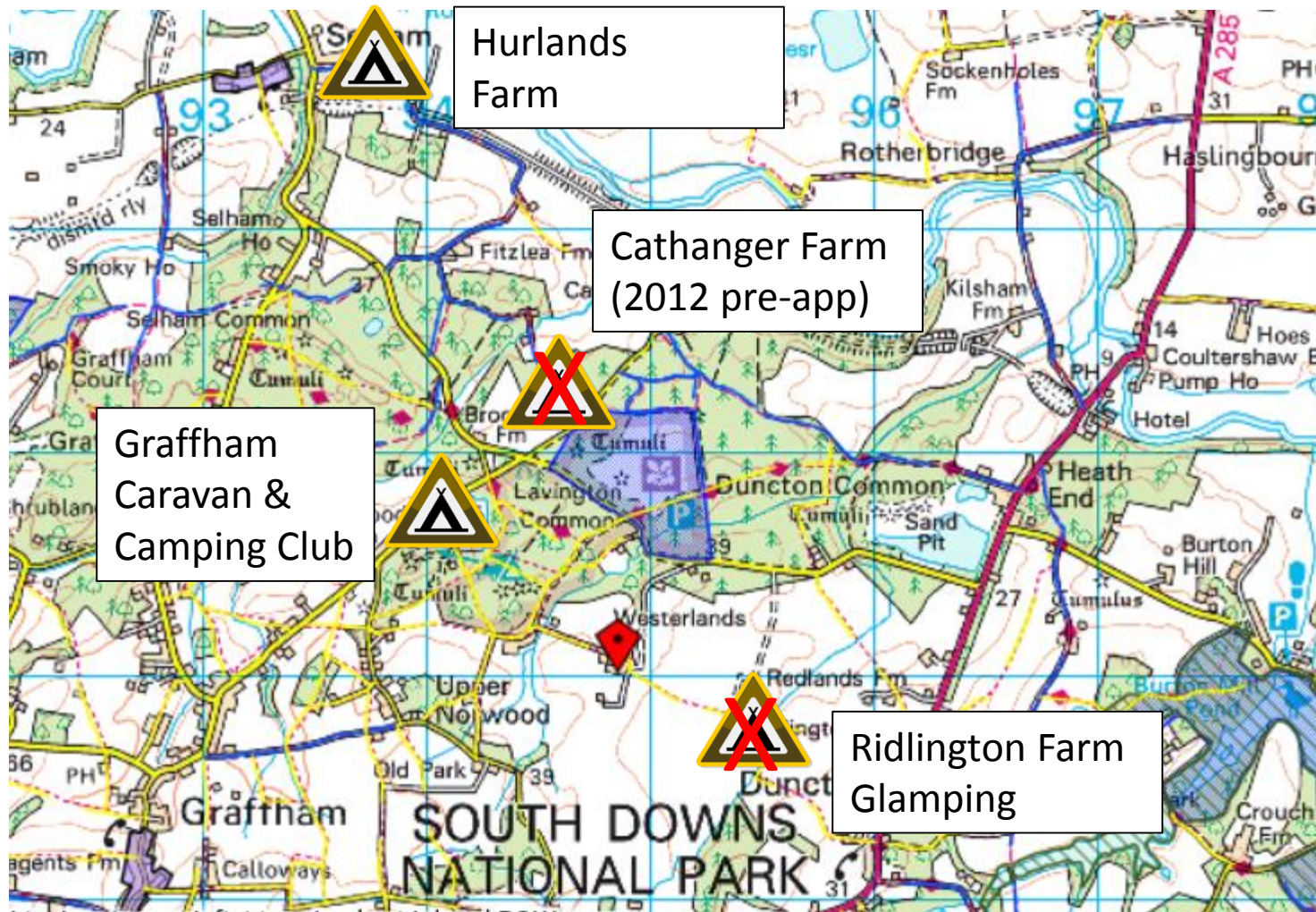


Footpath
No 718

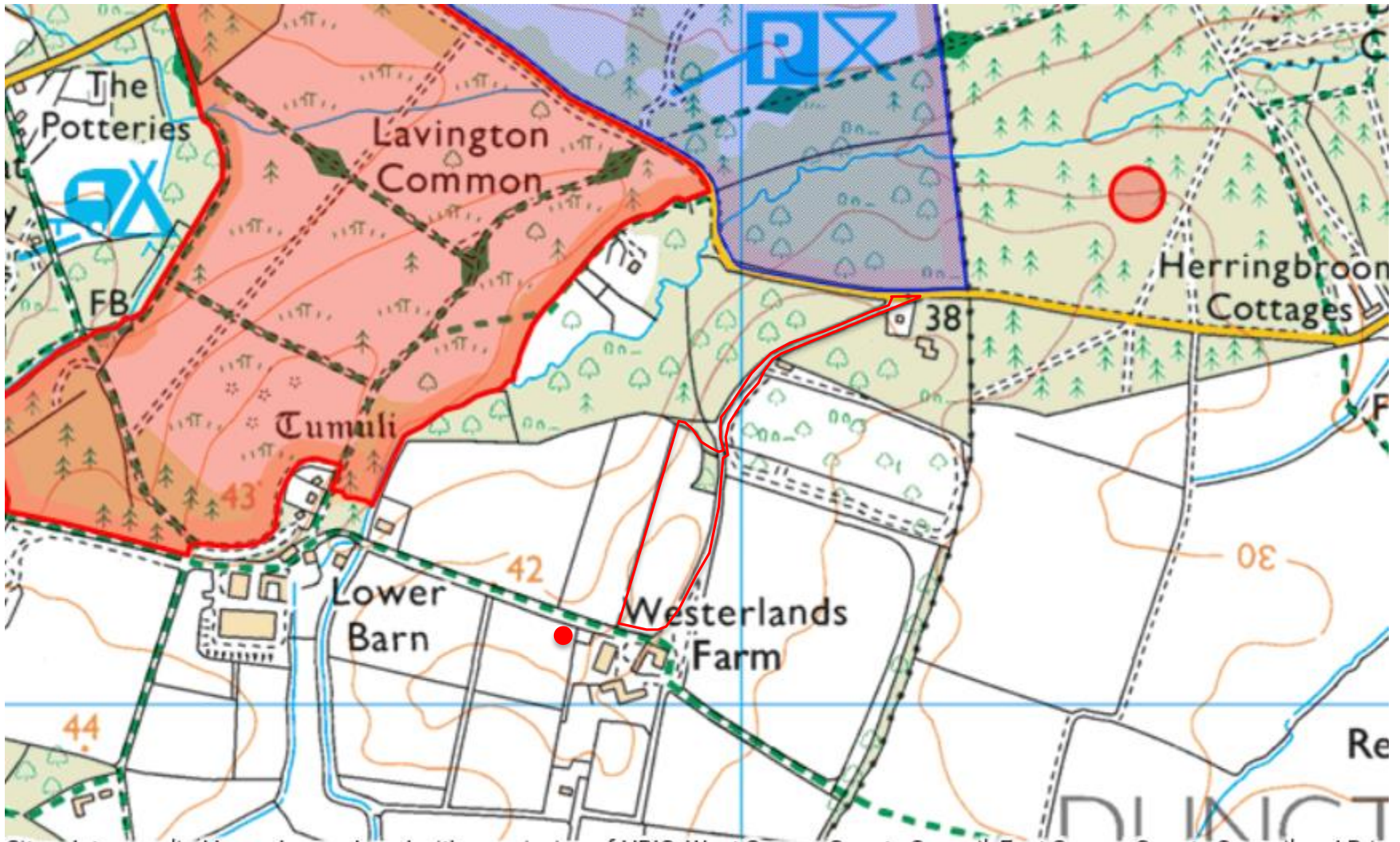
Site Location



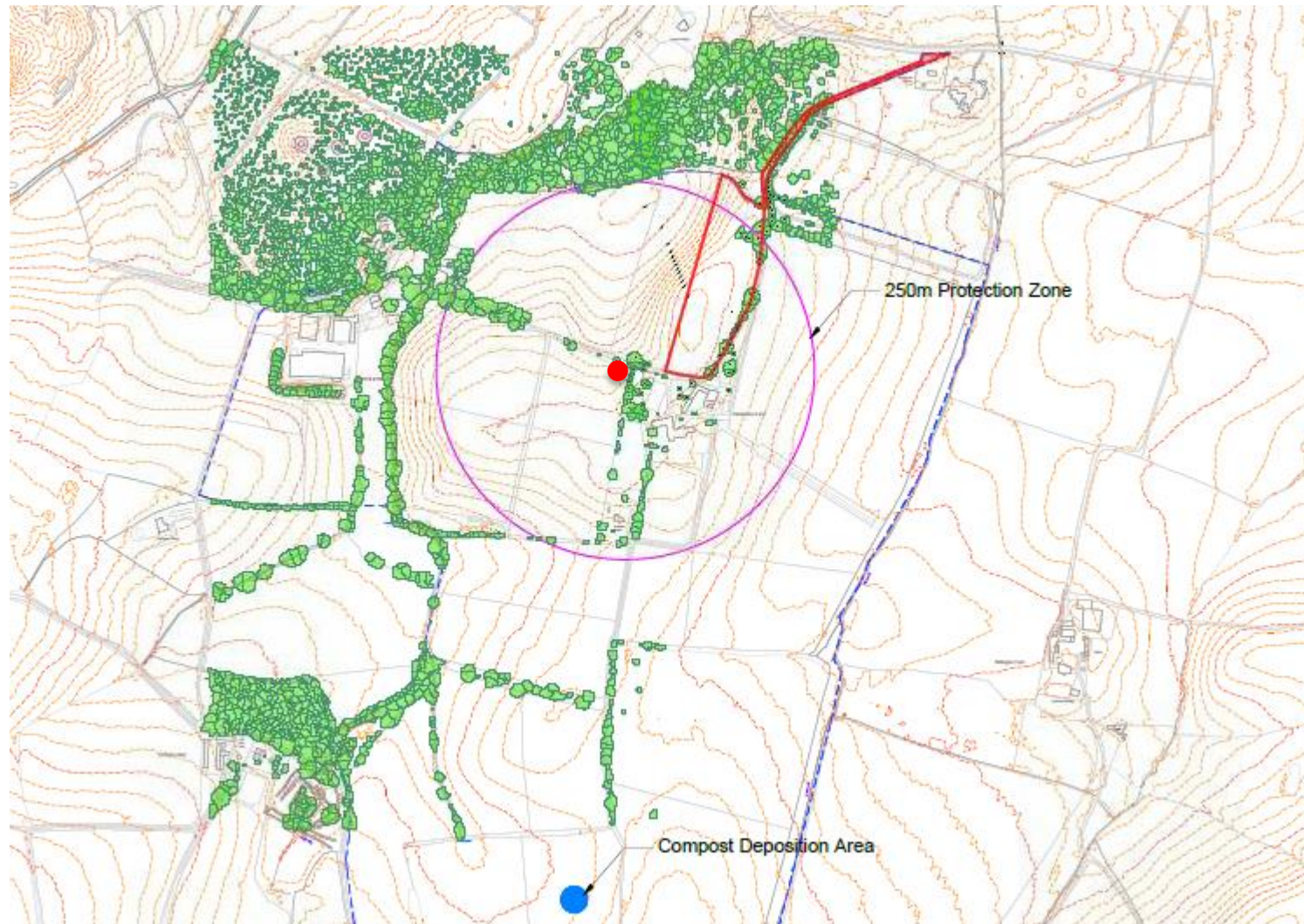
Other Campsites



Sensitivities and Constraints



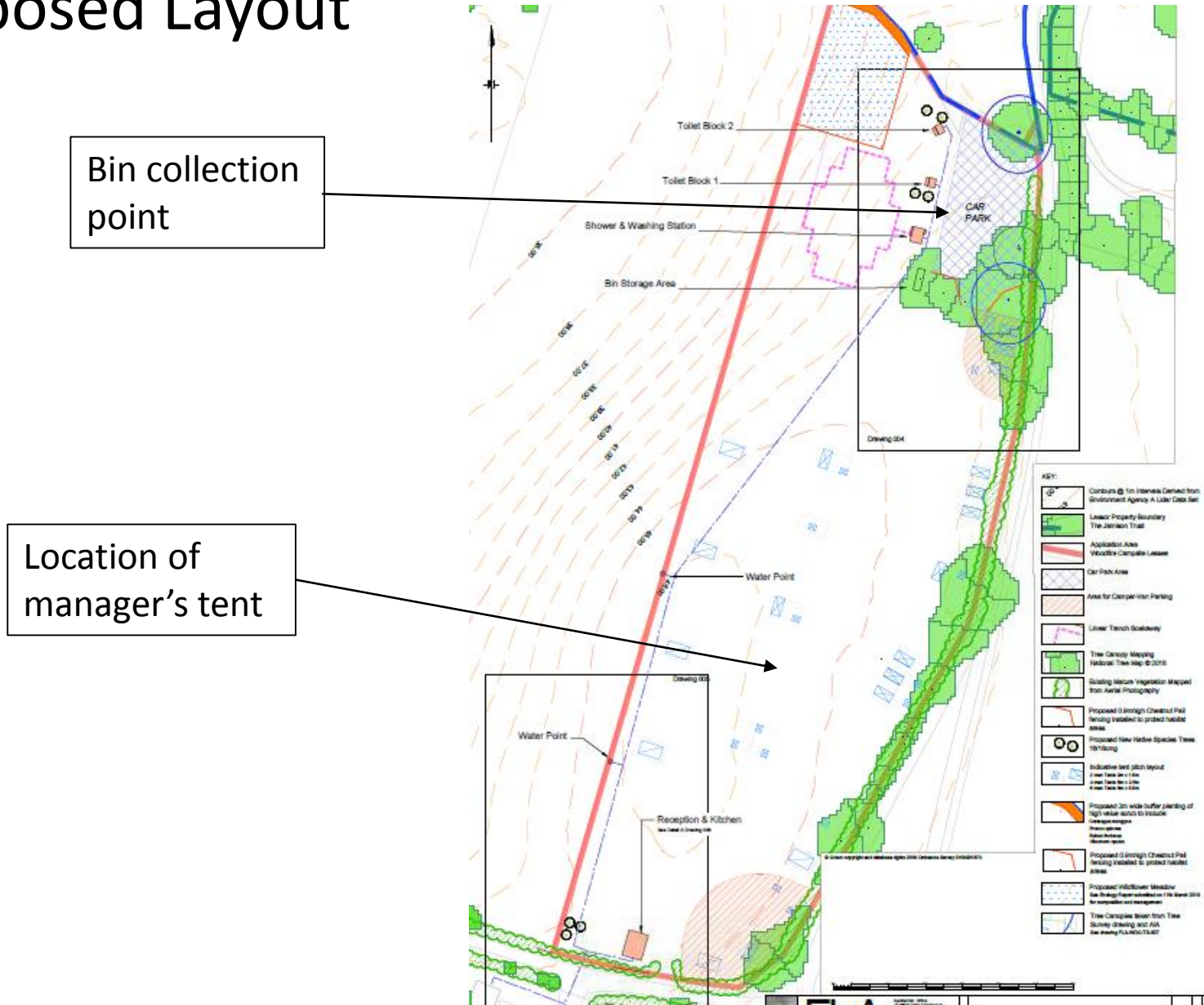
Compost Location



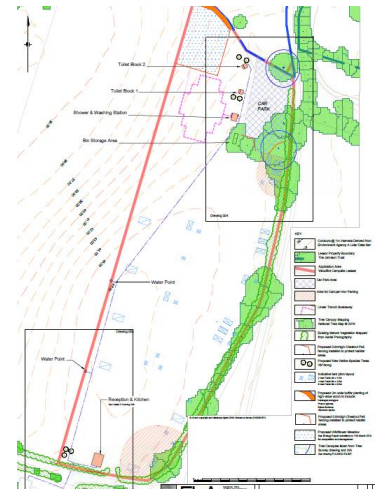
Views within the Site



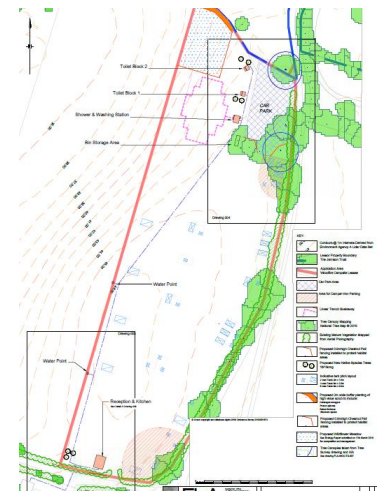
Proposed Layout



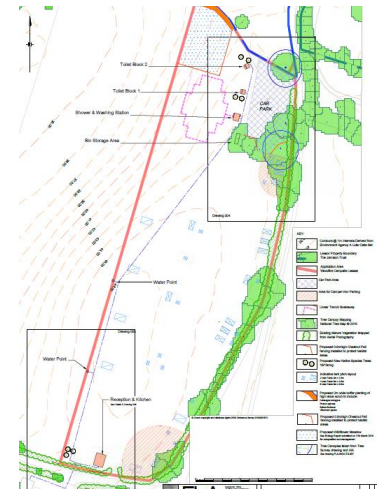
Car Park



Kitchen/Reception Building



Toilet and Shower Buildings



Campsite in Use



24/7/18 - 104 people onsite



14/9/18 - 97 people onsite

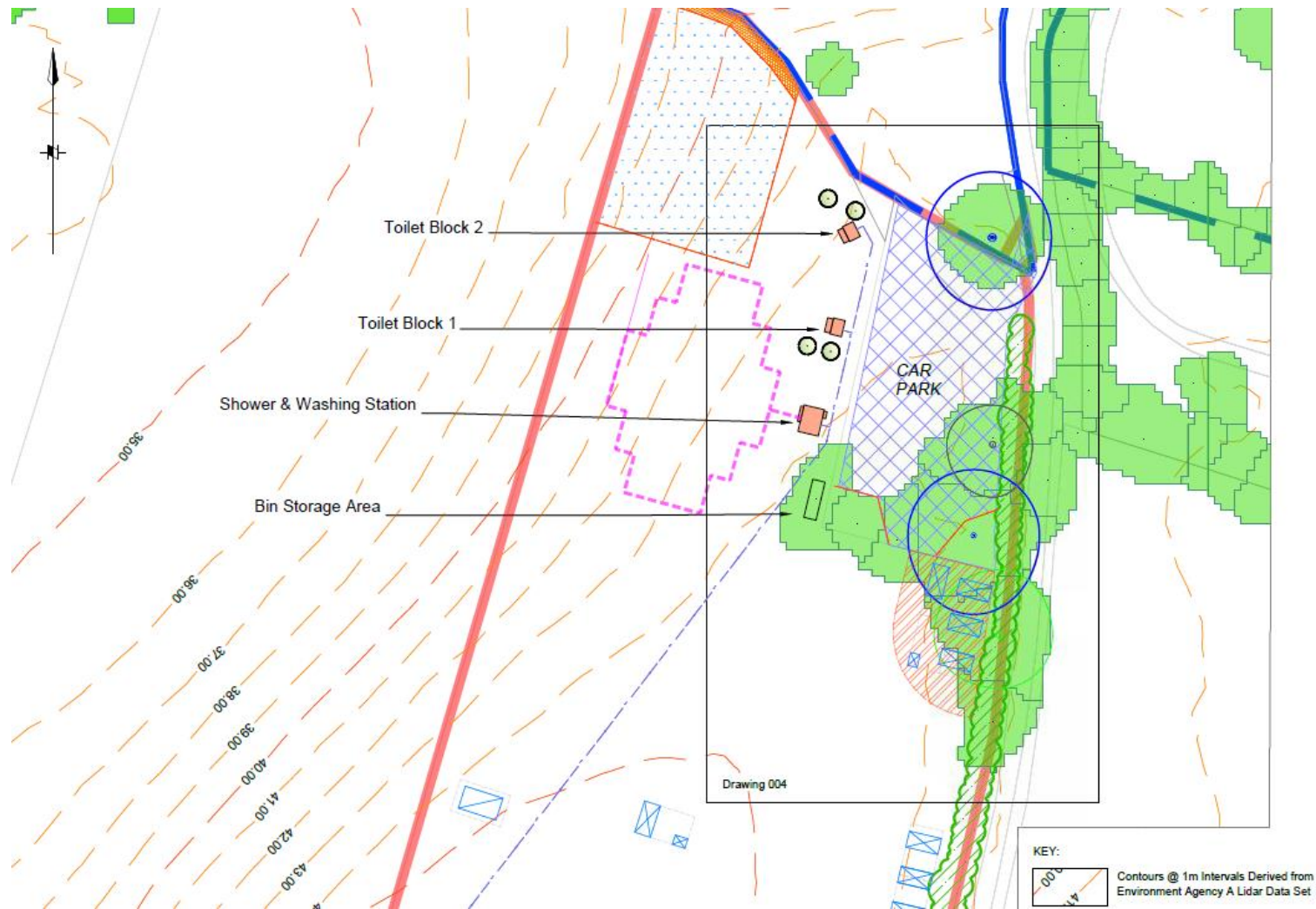


14/7/18 - 94 people onsite

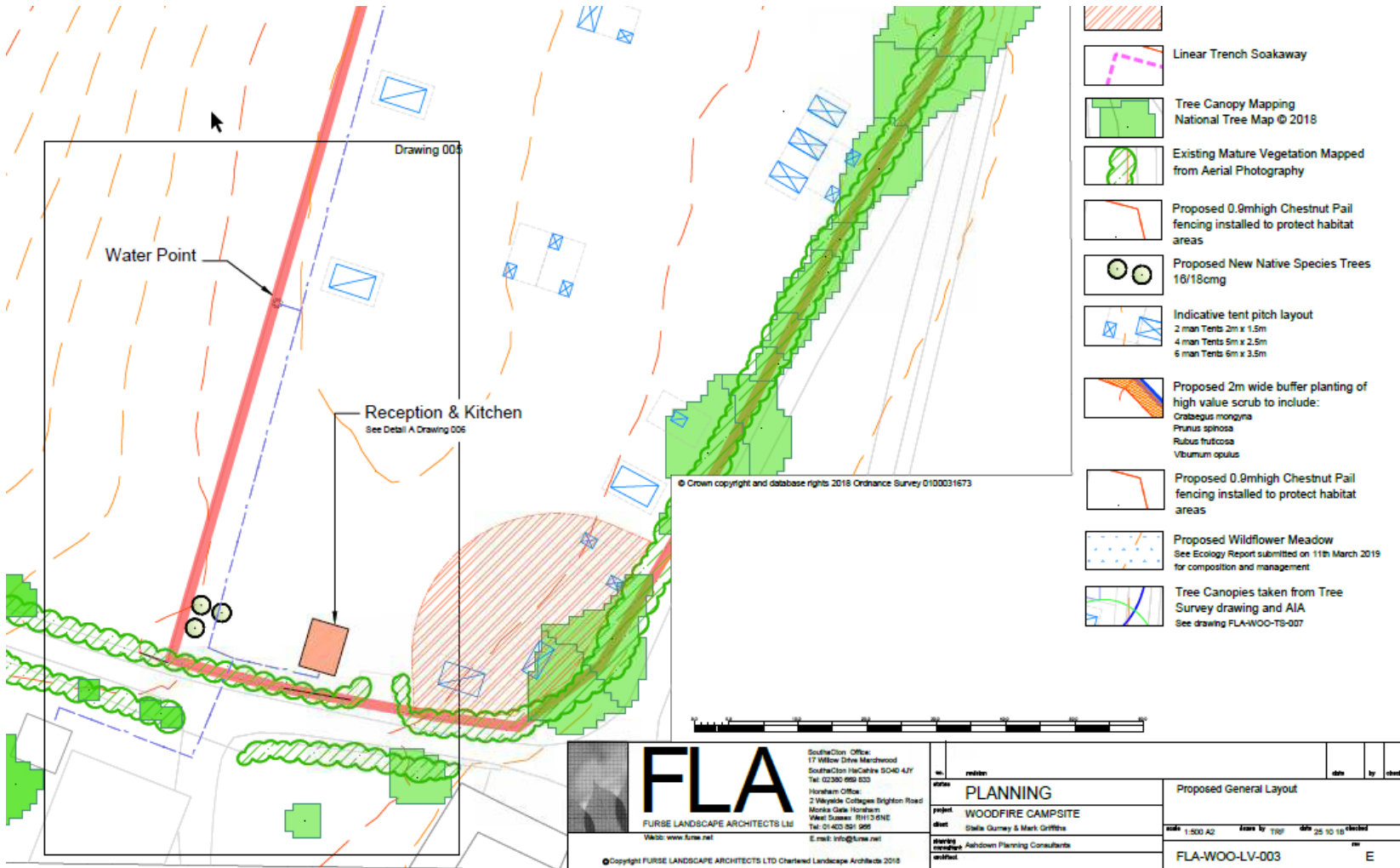


Pre-erected tent

Proposed Landscaping



Proposed Landscaping



Key Points for Consideration

- The proposal serves Purpose 2 in principle
- Benefits to tourism and local economy
- Sited close to the Serpents Way and SDW
- Supports farm diversification
- Will not adversely impact SSSI or water environment
- Limited harm to perceptual qualities of landscape and tranquility
- Opportunities for enhancement through landscaping and land management



Recommendation

That permission be granted, subject to the conditions set out at paragraph 10.1 of the report, and the update sheet

