

## Planning Committee Meeting 14 March 2019

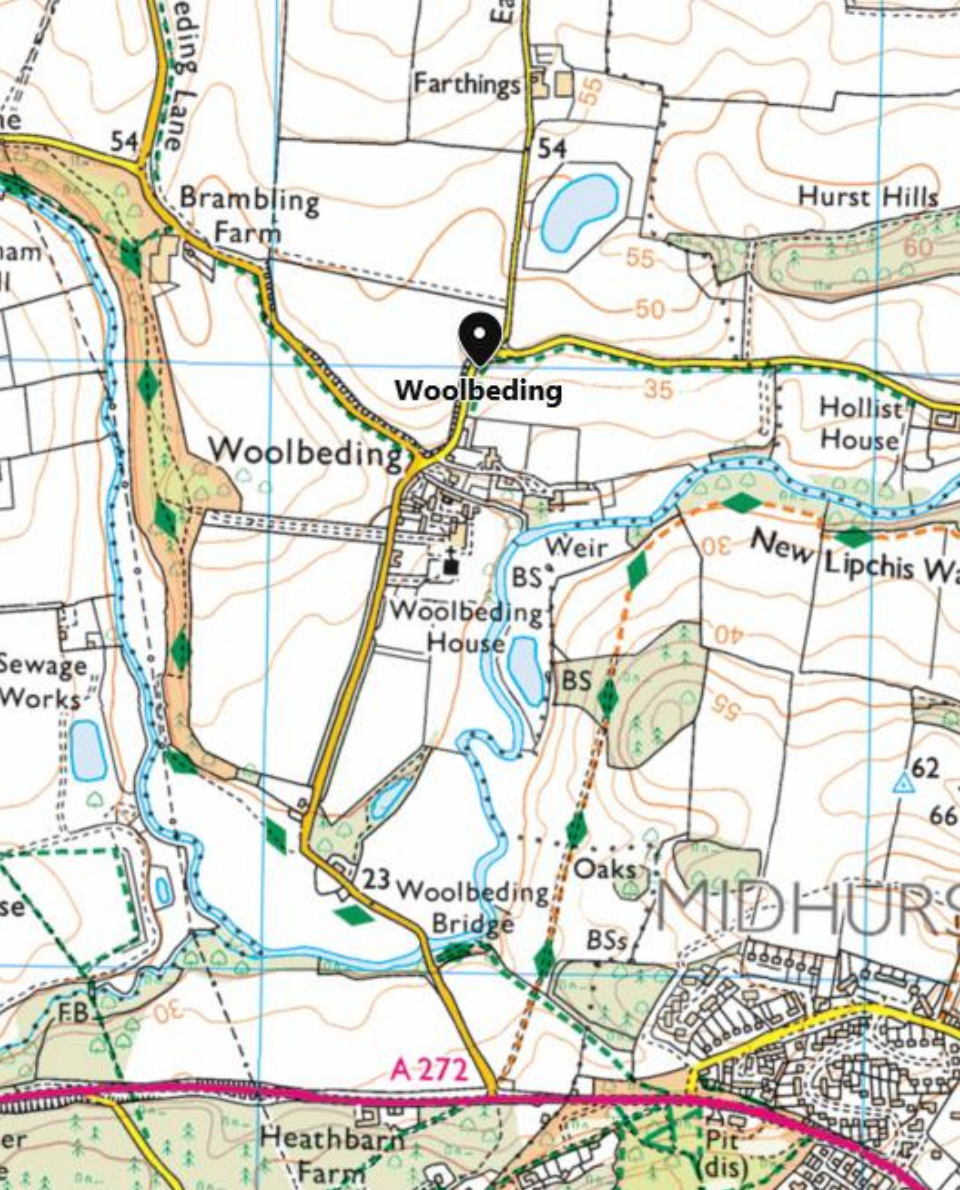
### Agenda Item 11 - SDNP/18/05744/FUL

Erection of a bespoke Glasshouse and the creation of a new formal garden, along with the removal of the existing tennis court and Orchid House.

Woolbeding Gardens, Woolbeding Lane, Woolbeding, GU29 9RR





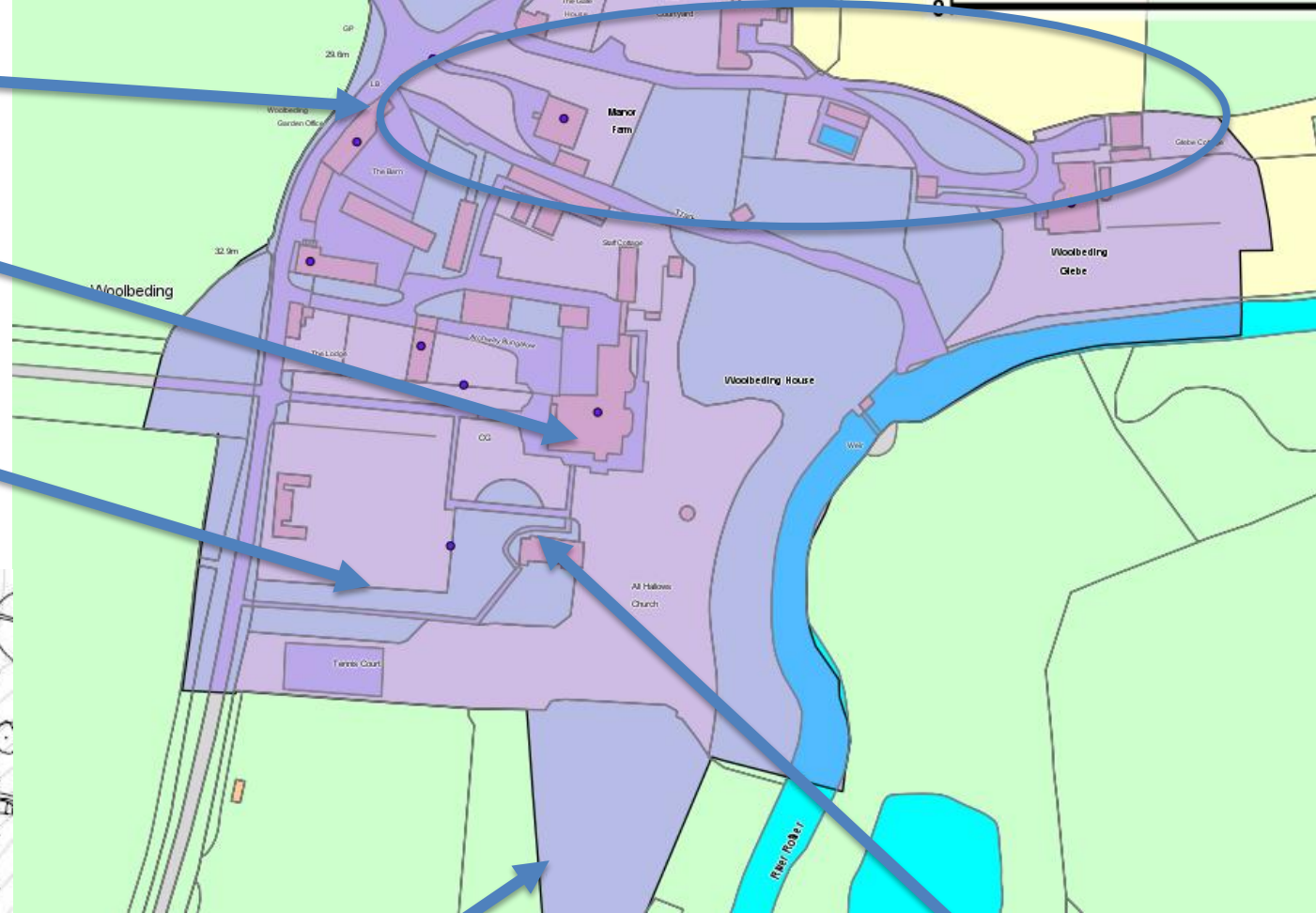




Neighbouring dwellings

Grade I listed Woolbeding House

Grade II listed Kitchen Garden Walls



Woolbeding Conservation Area

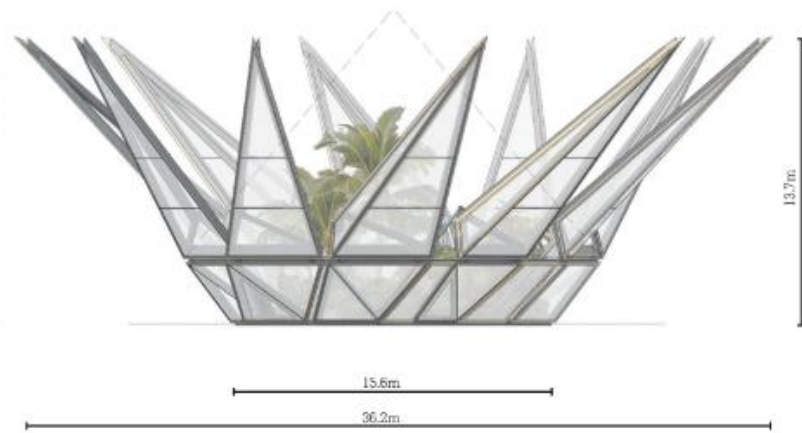
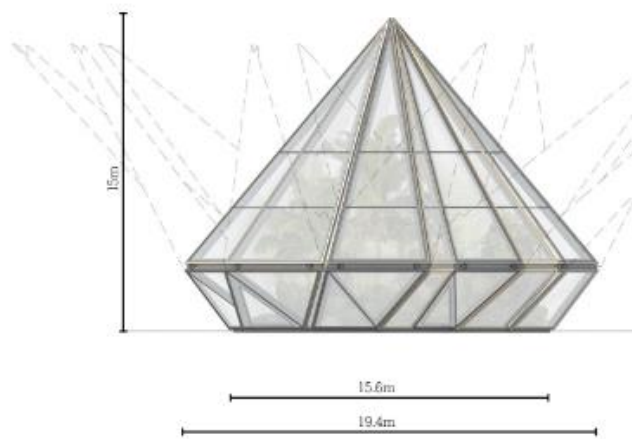
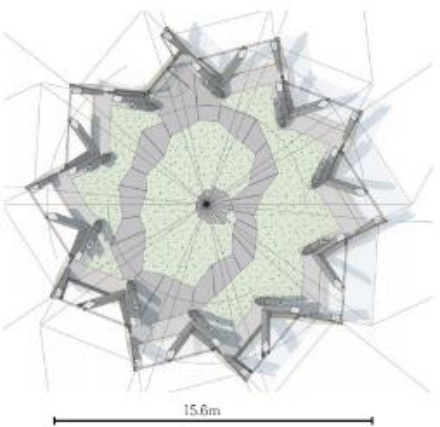
Grade I listed Church

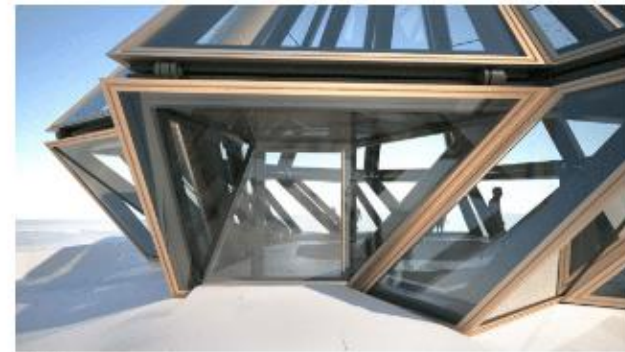
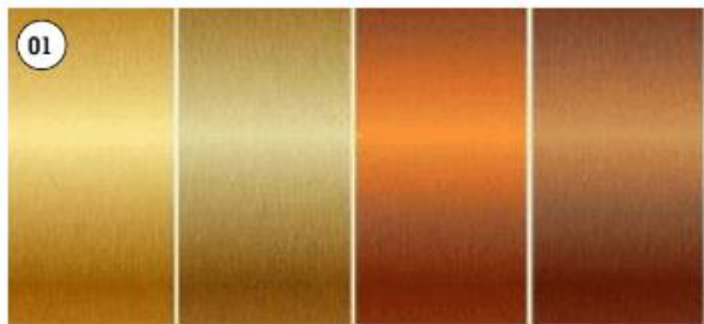
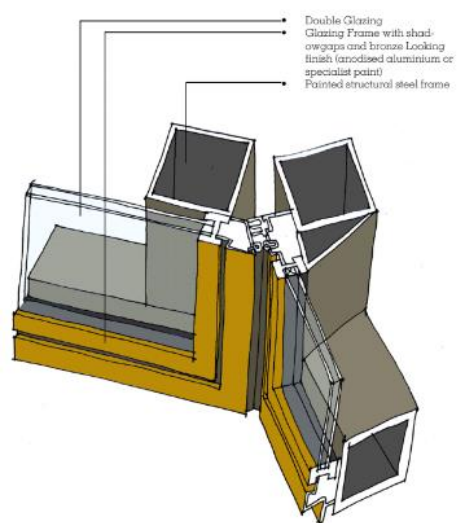




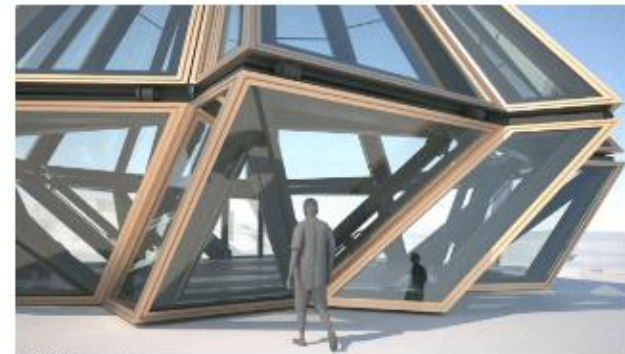








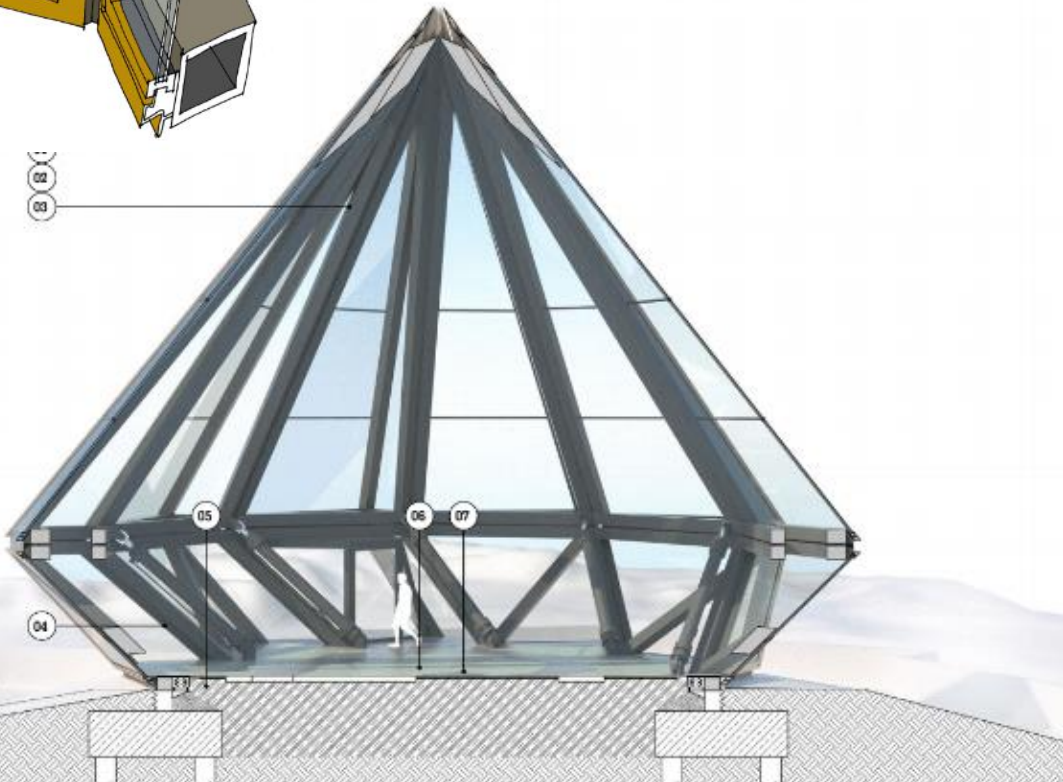
Entry door



Ventilation window



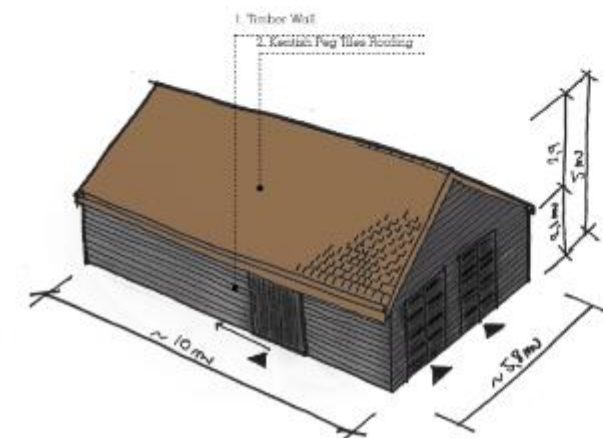
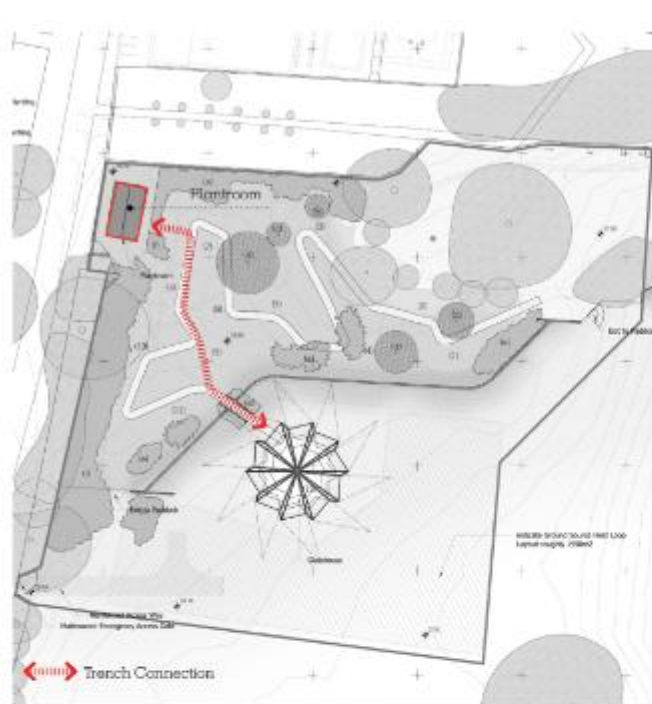
Hinges in a shadow gap



Sections



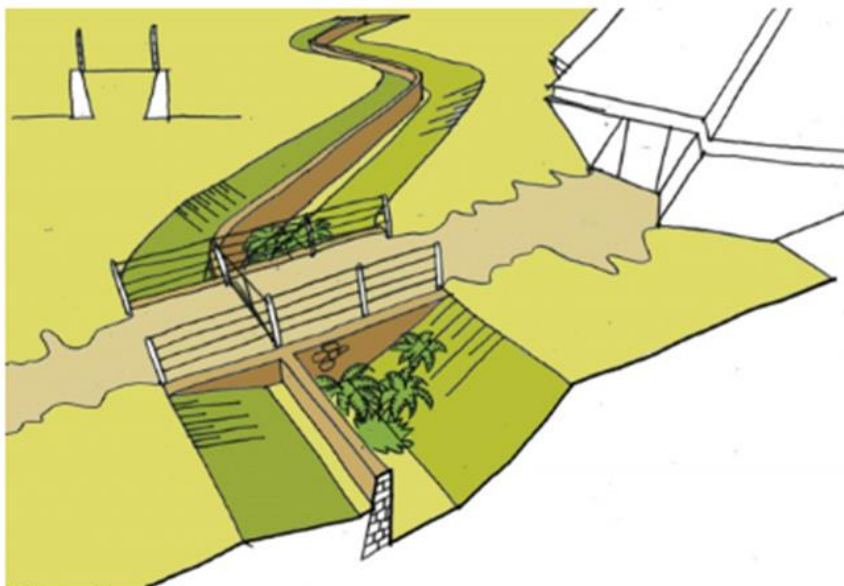




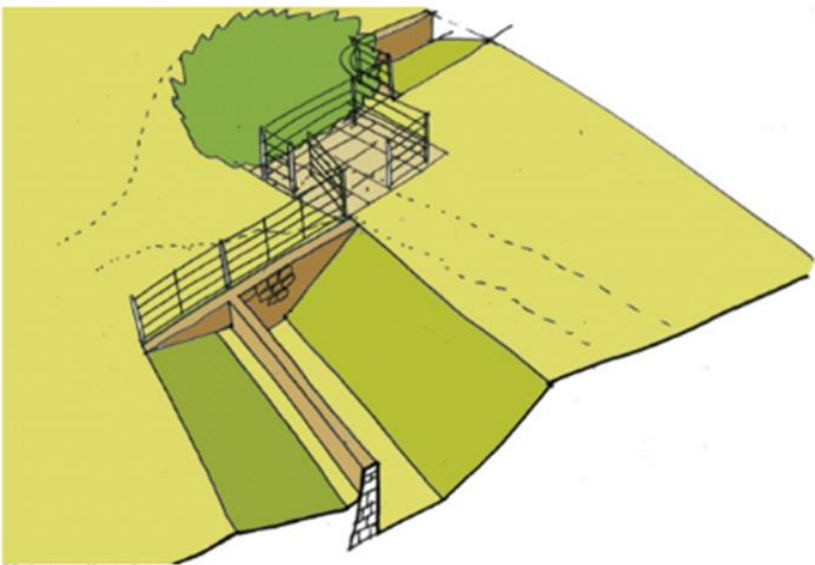
View of the plantroom from the gardens







Haha wall crossing



Haha wall ending



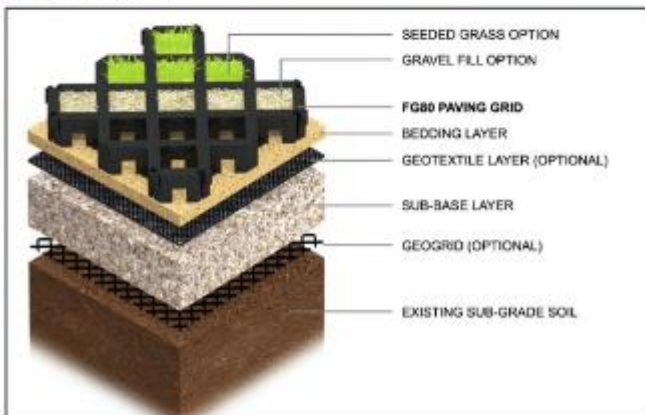




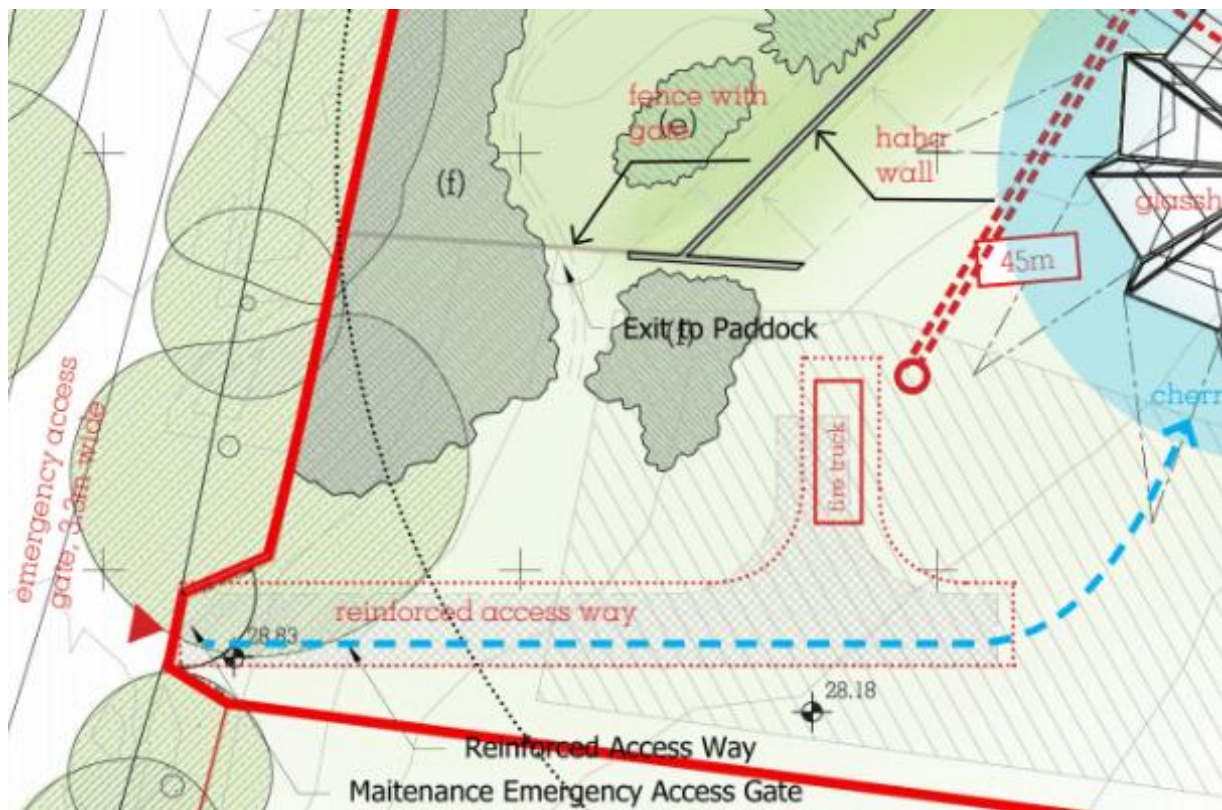
Entry gate from Brambling Lane



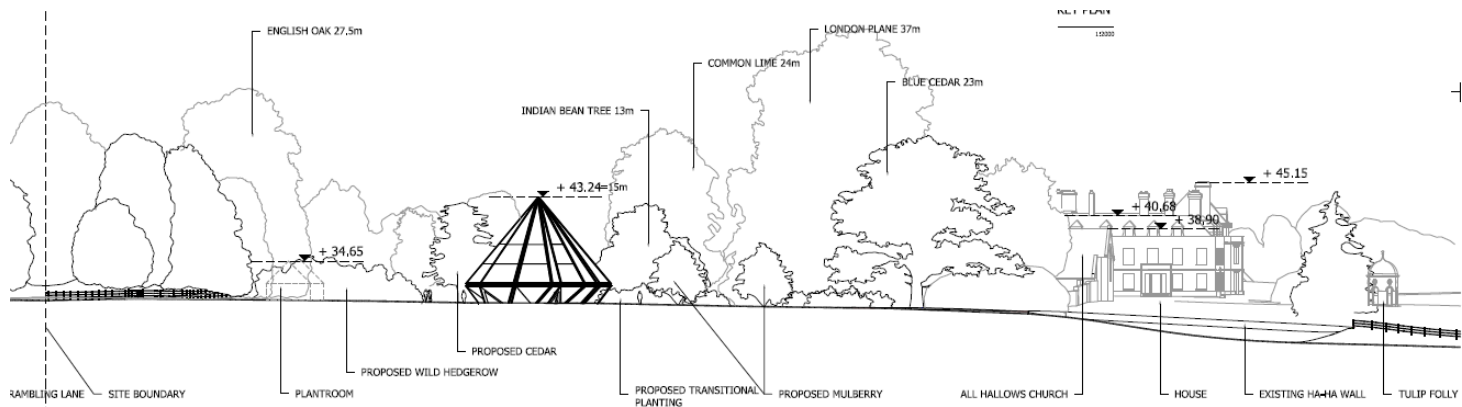
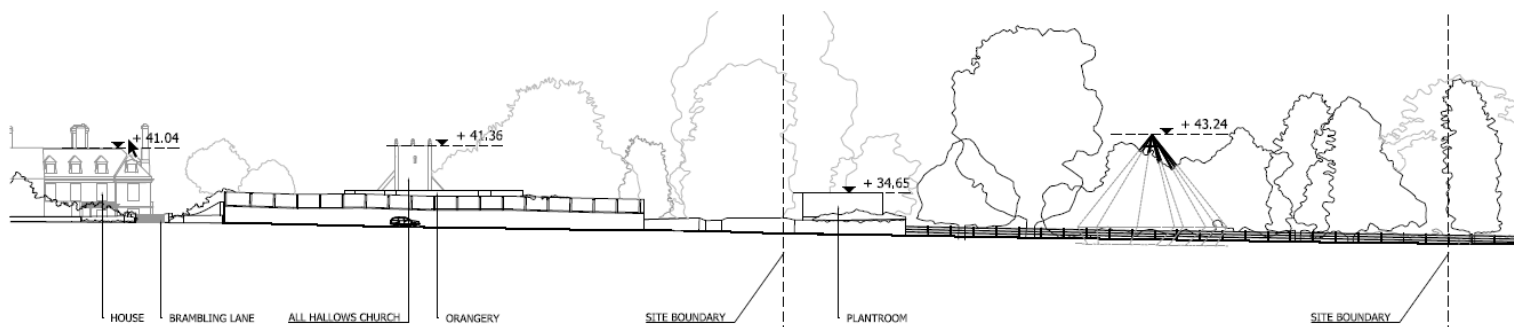
Entry gate from Paddock



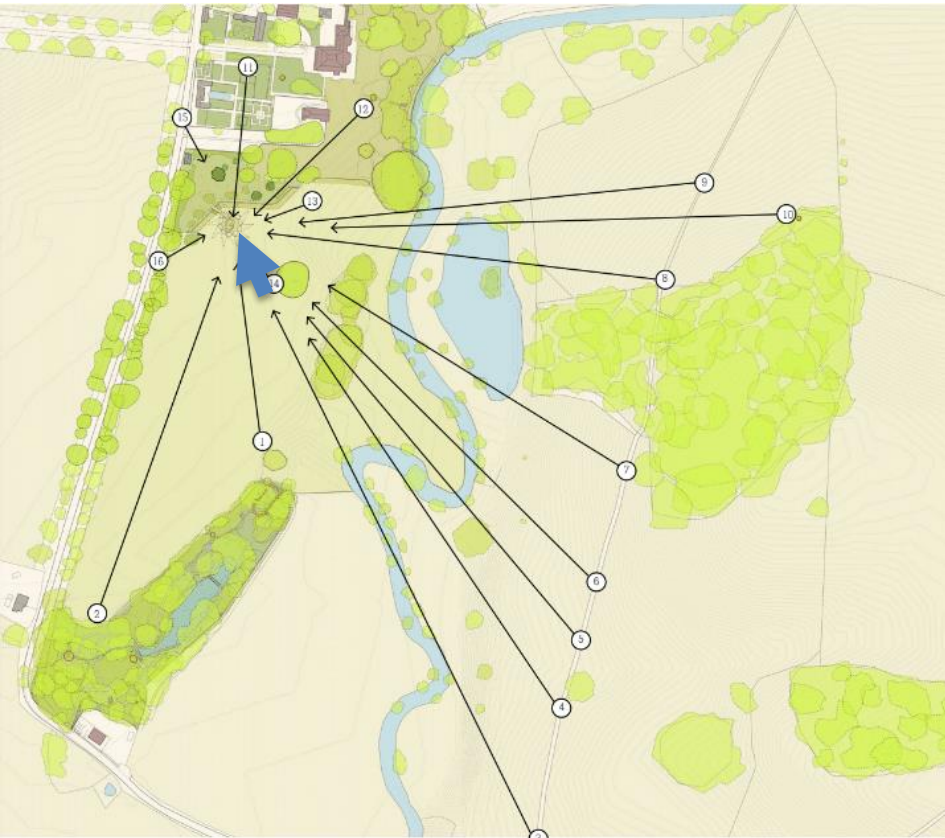
Example of grass reinforcement system











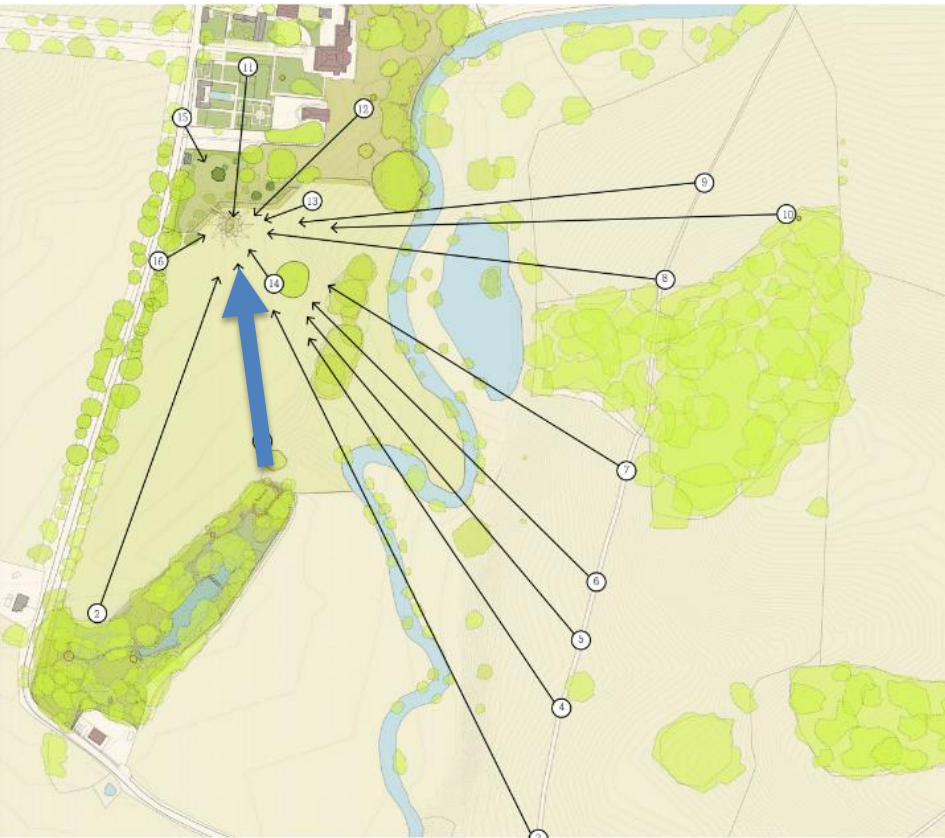
View 14 - from under Cedar Tree



View 14 - from under Cedar Tree







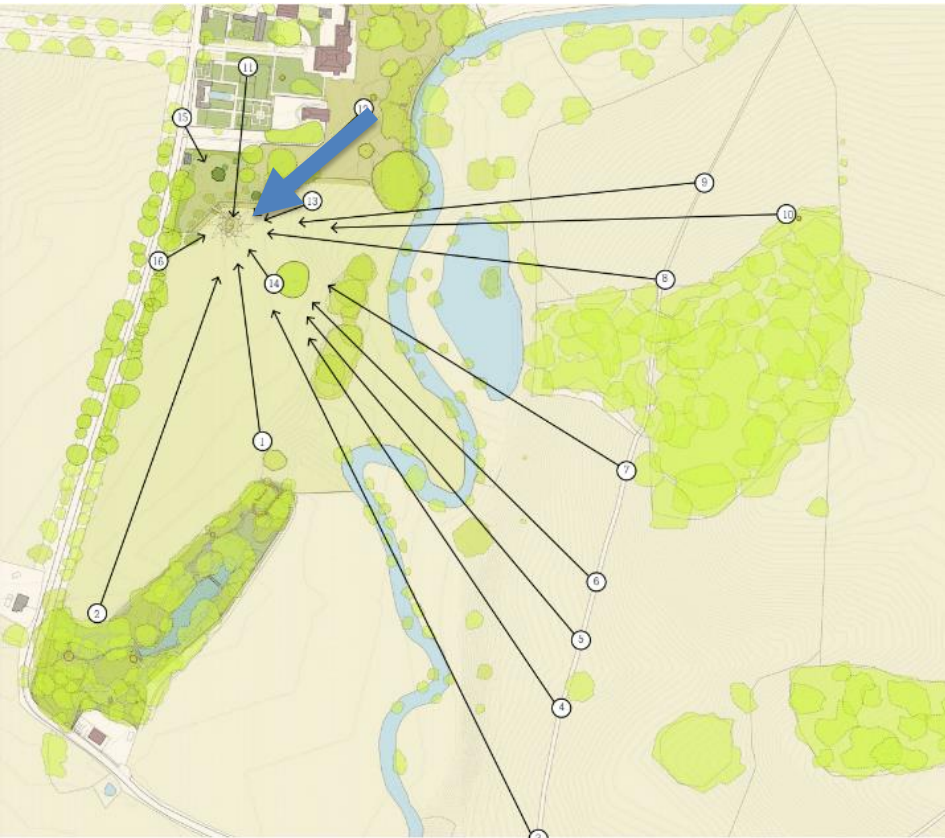
View 1 - across Paddock towards North



View 1 - across Paddocks towards North







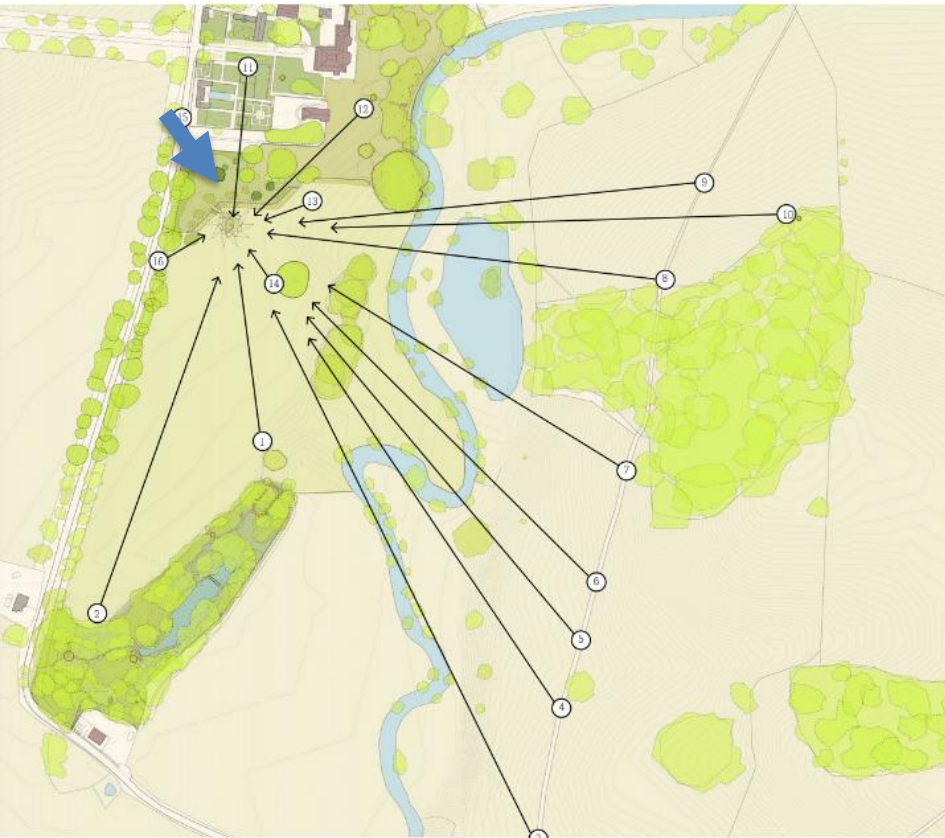
View12 - from Temple



View12 - from Temple







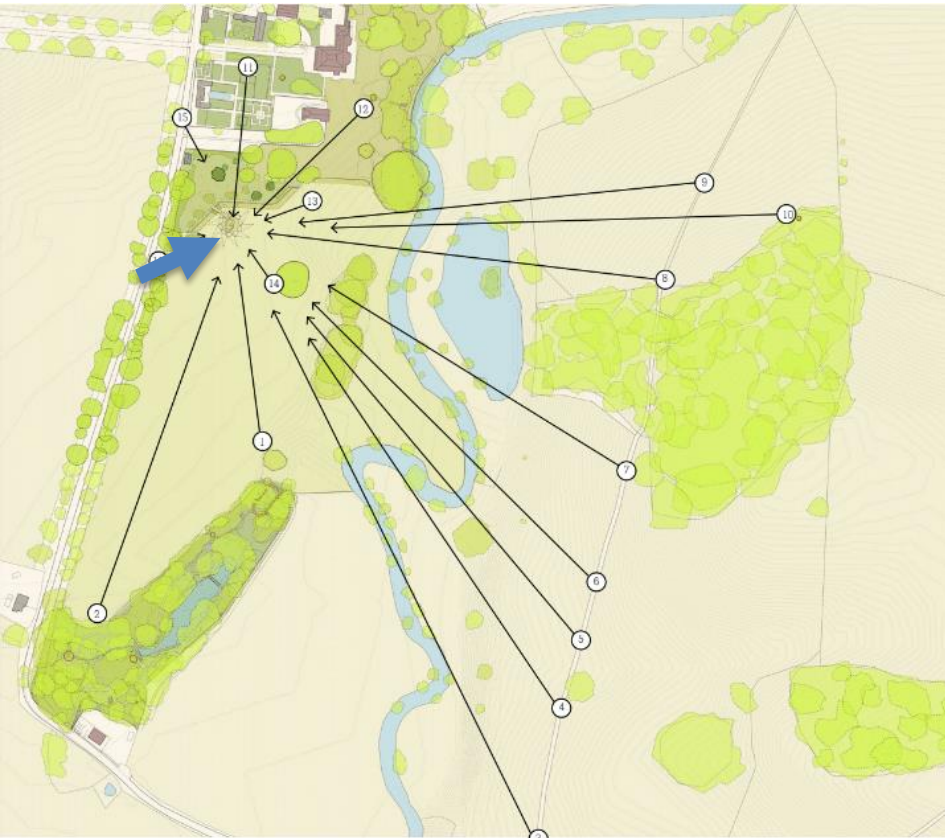
View 15 - from Brambling Lane by All Hallows Church entrance



View 15 - from Brambling Lane by All Hallows Church entrance







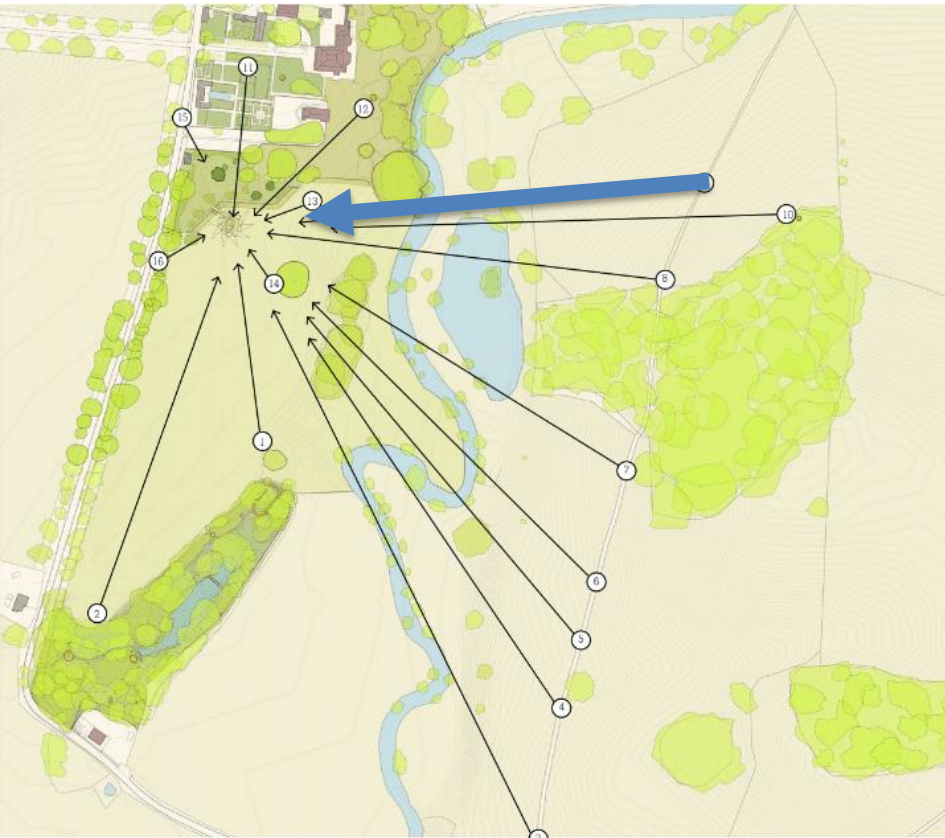
View 16 - a glimpse from Brambling Lane



View 16 - a glimpse from Brambling Lane







View 9- from New Lipchis pathway



View 9 - from New Lipchis pathway







View 3 - from New Lipchis pathway



View3 - from New Lipchis pathway





## Recommendation for SDNP/I8/05744/FUL

1. That planning permission be granted subject to the conditions set out at section 10.1 of this report.

