

# South Downs Partnership Management Plan Review

Parish Councillors and NPA Parish nominated Members

## Introduction to the PMP Review



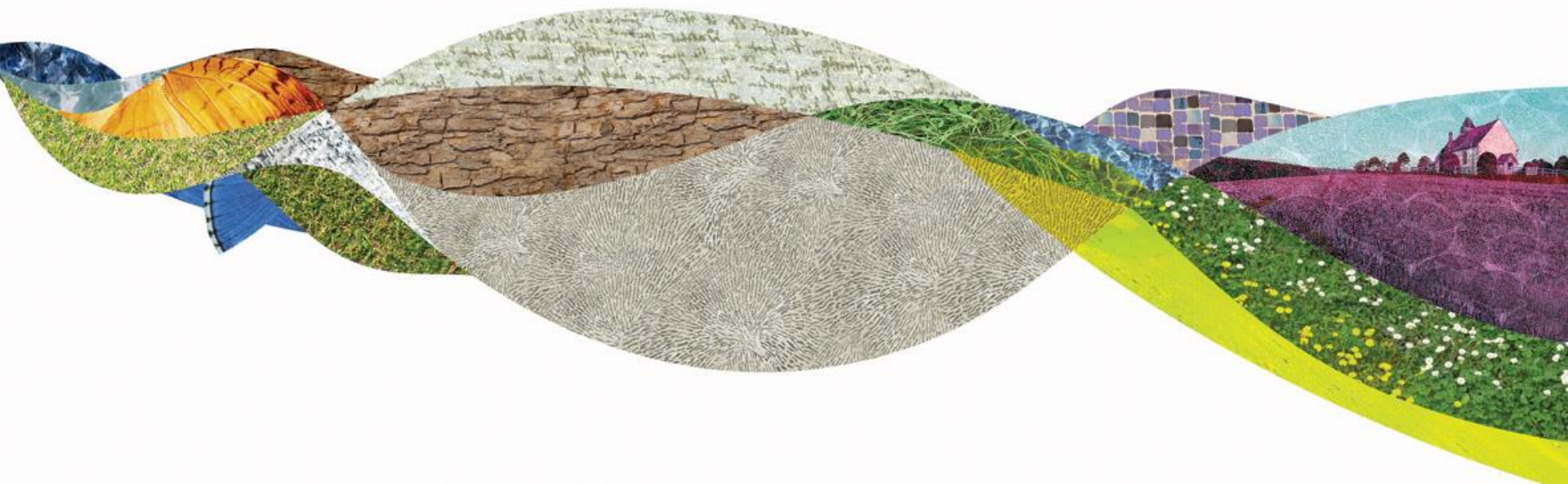
# South Downs Partnership Management Plan Review

Andrew Lee

Director of Countryside Policy & Management

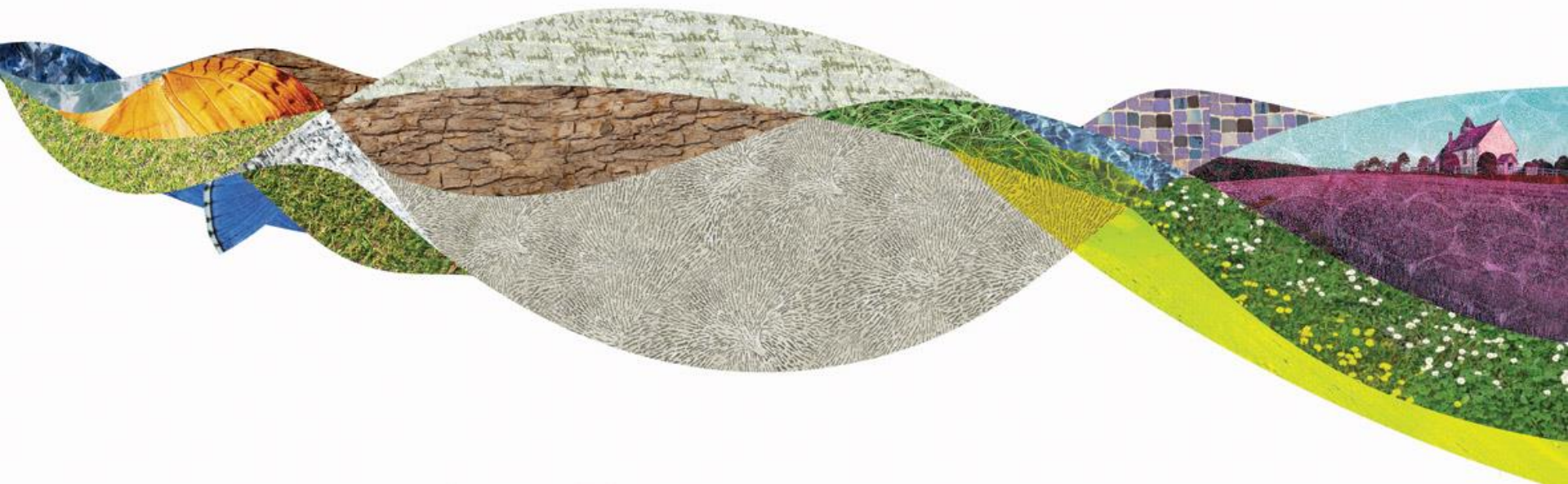
## Setting the scene

### Partnership Management Plan & Glover Review



# South Downs Partnership Management Plan Review

**A role for local communities**

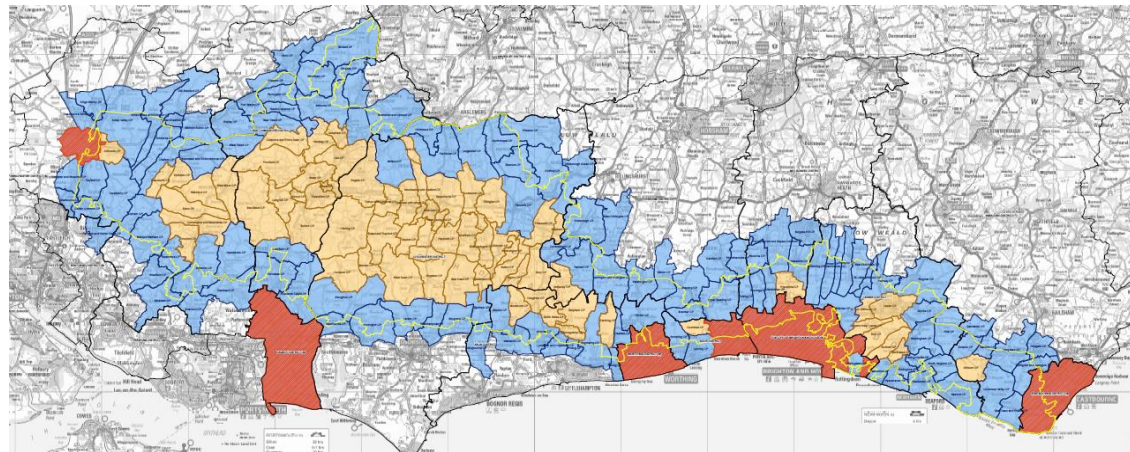




# Partnership Management Plan

## Delivering the PMP – Community resource

- Distinctive Towns and Villages, and Communities with real pride in their area (SQ)
- 112,000 people live within the National Park
- 176 Town or Parish Councils
- How many project groups, local action groups, friend of groups?
- Limited knowledge / record of the contribution this resource makes



# Partnership Management Plan

## Delivering the PMP – Purpose of the workshop

### PRESENTATIONS....WHAT WILL WE SHARE WITH YOU

- Inform Town and Parish Councils of the PMP review
- Highlight how communities have contributed to PMP outcomes in the first 5 years
- Highlight areas of work / outcomes where community action could contribute

### WORKSHOP...WHAT DO WE NEED YOU TO DO NOW?

- Review PMP outcomes and projects on display
- Identify existing projects which contribute
- Identify new projects which contribute
- Identify community groups/organisations that may contribute to outcomes

#### SOUTH DOWNS NATIONAL PARK PARTNERSHIP MANAGEMENT PLAN REVIEW

##### OUTCOME 6

There is widespread understanding of the special qualities of the National Park and the benefits it provides.

##### Learning through LiDAR

At the beginning of this project a LiDAR survey was carried out; this is where a plane flies over the landscape and uses laser beams to 'map' the ground surface producing computer images known as LiDAR files. These LiDAR files are then compared with existing knowledge of the area and new potential archaeological features are identified.

The project has recruited and trained over 108 community volunteers to take part in archaeological fieldwork activity at local sites to check if the features do exist. This activity also included two community excavations in April and May of 2016.

More community volunteers have been busy researching the evidence from historical maps and documents of this area to provide more information about the sites from the medieval period onwards, for example, researching how people lived on, and farmed the landscape, and took part in pleasure pursuits such as deer hunting.

Other volunteers have been involved with the oral history element of the project, meeting with local residents and voice recording their stories and memories of the area and how use of this landscape has changed over time.

From all this work a wide range of learning resources (including electronic media) have been produced to share the information, encourage young people to visit and explore, learn about the stories, and engage with the area.



##### Lessons of the Landscape

A project working with seven schools designed to address the key issue that many children of school age are unaware of where their food comes from. It also looked to redress the growing disconnection that many children have with nature and the landscape in which they live.

*"A great project that kept the children engaged throughout. It was of great value for them to understand more about the local landscape and history"*

Rachel Lewis, Hamsey Community Primary School



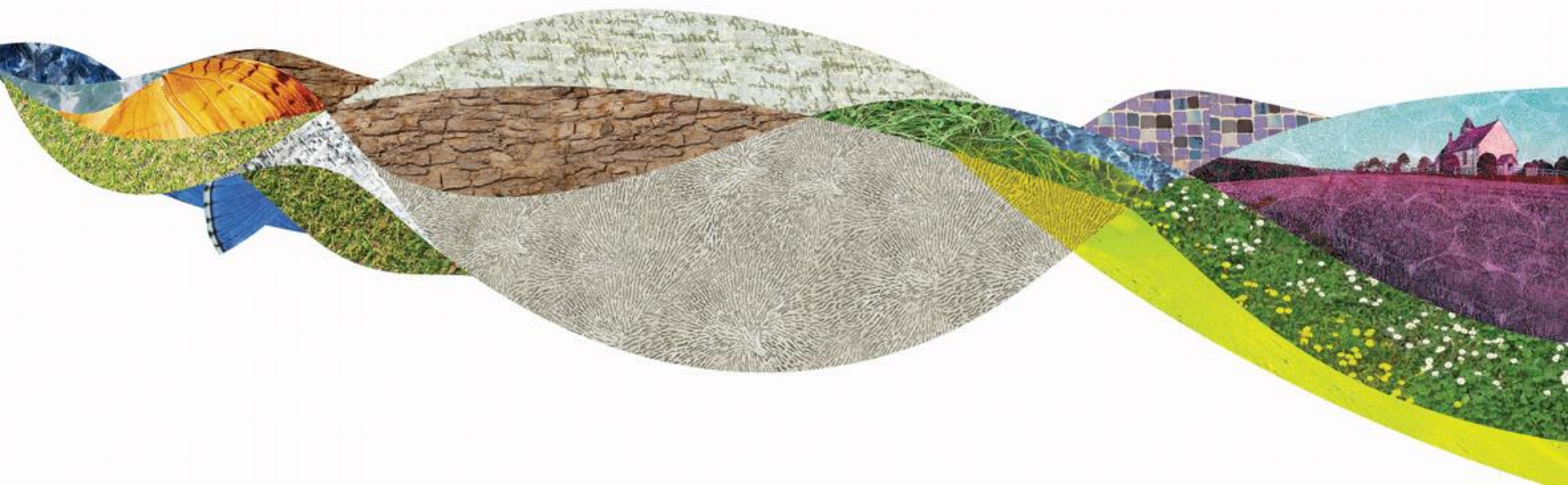
SOUTH DOWNS  
NATIONAL PARK



# Parish and Community Projects that enhance their communities and deliver the Partnership Management Plan

## Purpose 1 and Purpose 2

Ruth James/Laura Warren



# Riverside Park outside Newhaven

- Restoring an area of meadowland, neglected for 50 years, to its former glory
- Friends of Riverside Park are now working with SDNPA and ESCC rangers and volunteers to restore the biodiversity of the area through clearing scrub, digging out ponds and planting wildflowers





# Clausentum Fen restoration project

- 4 acre site just outside Winchester formed in the bend of River Itchen
- Clausentum Fen Conservation Group supported by HCC, HWT, SDNPA and EA
- Clearing bamboo, removing litter, experimenting with baffles and water flow





# Easebourne Playground

Easebourne was left without a playground when the lease on the land previously used ended in 2017.

The Parish Council offered a piece of land and set about consulting the community and planning a facility which would meet its needs. The resulting specification included traditional play equipment, wood structures for children to climb on and play around, a network of footpaths, wild flower planting and woodland areas as well as a pond.

The Sustainable Communities Fund put a £2,000 grant towards this ambitious project which cost £132,000 in total.



# Lewes Cemetery

- Loss of biodiversity owing to the need to keep the grass sward low and tidy
- SDNPA worked with Lewes Town Council to create a planting plan of low growing chalk grassland herbs
- Mass planting day with schoolchildren from Lewes Priory
- Maintains the tidiness and access to the site without compromising biodiversity





# East Meon River Restoration

- Meon Valley Partnership provides a co-ordinated, strategic approach to conserving and enhancing the Meon Valley through partnership working
- The East Meon project looked to improving the biodiversity of the River Meon as it flows through the village
- Creating semi-natural meandering channel to diversify the habitats
- Supported by East Meon Parish Council and the local community



# East Meon River Restoration: putting the river back at the heart of the community

Before



After





# Steyning Rifle Range Restoration

- Part of the larger and long running Steyning Downland Scheme.
- Range was in constant use, both military and civilian, from the late 1800s right up until 1980
- Steyning Grammar School students came out on a weekly basis in the winter term
- Help remove the trees from this piece of industrial and cultural heritage
- The piles of wood are then sold to local people to help fund the Steyning Downland Scheme.



# Localised Access Projects

- Lynchmere Society in West Sussex, access for all trail around their site
- Access for all trail at Mill Hill
- Bramber Walk for All upgraded footpath
- Sompting Beggars Bush walk for all
- Improved pavement access to the village centre in Cooksbridge
- Circular Miles without Stiles routes around Ditchling Beacon and Jack and Jill windmill





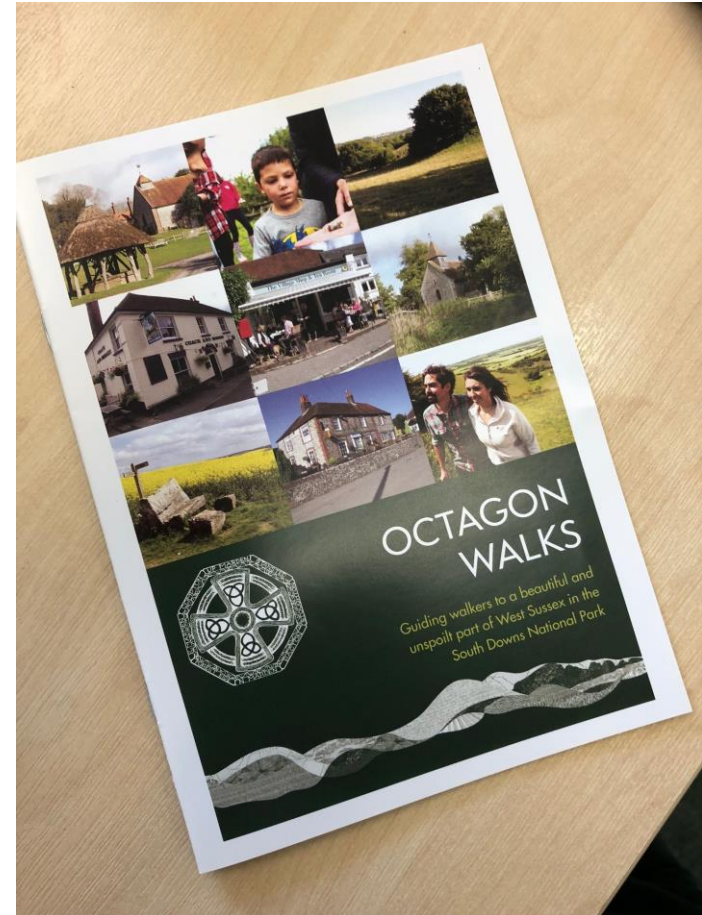
# Cross boundary access projects

- Egrets Way is an interlinking, safe and accessible cycle and walking route opening up access from Newhaven to Lewes
- Ouse Valley Cycle Network has representatives from each Parish along the way, and Lewes Town Council



# Interpretation

- The ecclesiastical Parish of Octagon made up of 10 villages north of Chichester
- To mark the Diamond Jubilee in 2012 established an 18 mile circular walk linking the villages
- 8 circular Octagon Short circular walks 2-4 miles long
- SDNPA supported the design and printing of a booklet of these walks through funding from the Sustainable Communities Fund.





# Parish and Community Projects that enhance their communities and deliver the Partnership Management Plan

## The Duty...

Chris Paterson  
Communities Lead



# PMP – Delivering the Duty

**Seek to foster the economic and social well-being of local communities  
within the national parks**

**How can communities contribute....**

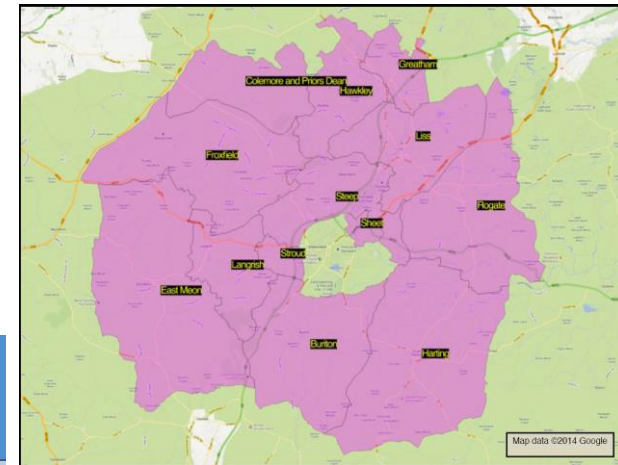
- Neighbourhood Plans
- Parish Plans & Village Design Statements
- Sustainable Communities Fund
- Community Infrastructure Levy
- Assets of Community Value





# Neighbourhood Plans - housing

- Petersfield Self – Build & Local Connection
  - Affordable housing provision in the Town
  - Constrained by Basic Conditions requirement to conform
  - Unique solutions to create housing for local people
  - Low cost vs Affordable



## Housing Policy 7 (HP7)

### Custom and self-build dwellings

Sites H2 and H11, as shown in Table 1, are allocated wholly as self-build sites.

Subject to the application conforming with the appropriate site design brief in section 12 of this Plan and meeting the requirements set out in other appropriate policies of this Plan as well as those within the East Hampshire District Local Plan: Joint Core Strategy, then:



# Neighbourhood Plans - housing

- Lewes – Low Cost Homes
  - Locally affordable housing
  - Available for rent or purchase
  - Price linked to median local income
  - Specific sites allocated

2 Lewes Low Cost Housing is here defined as the maximum cost affordable on the average Lewes salary whether for sale or rent. The Government's definition of 80% of market value is not "affordable" on the average Lewes income of £23,000 or household income of less than £30,000, and for that reason will not address the community's housing need.

3) All strategic and infill sites within this Plan will meet the Local Plan requirement for affordable housing. This shall include maximising the amount of Lewes Low Cost Housing<sup>2</sup> to meet local housing need, unless proven to be undeliverable<sup>3</sup>.





# Neighbourhood Plans - parking

- Amberley NDP
  - Problems with lack of off-street parking
  - Visitors and residents have to park on rural lanes
  - A number of parking hot spots
  - Challenge for public service vehicles

## **POLICY FI 1    CREATE A CAR PARK**

The Parish Council will work to secure funding for and develop a car park.

The car park will be:

- designed and landscaped to cause minimum intrusion into the surrounding countryside and views from the South Downs Way;
- provide a safe off road route from the car park into the school for schoolchildren and parents;



# Neighbourhood Plans - other

- Liss NDP – Protection of retail provision in village centre
- Twyford NDP – new car parking in village centre, flood mitigation scheme
- Patching NDP – protection of community facilities (Church, Village Hall, 2 x pubs)





# Parish Plans & Village Design Statements

- Buriton Parish Plan – Film shows in Village Hall
- Alciston – improving communication in the village (notice boards)
- Wisborough Green – improving access



# Sustainable Communities Fund

- **Fittleworth Community Shop**

- Identified need for a local shop
- Site allocated in Neighbourhood Plan
- Community raise £450k
- Playground facility
- £10k from SCF



- **Adhurst Allotments**

- Existing allotments over subscribed
- Local Allotment Association secure lease for new allotments
- Funding to provide infrastructure (water, fencing)
- Community raise £10k
- SCF fund £4k



- **Lewes Pound**

- Feasibility study to establish whether the well established local currency could be used in electronic format
- Lewes Pound CIC receive £2,250 from SCF
- Total project cost £10,500





# Community Infrastructure Levy

- Town and Parish Councils receive 15 or 25% of CIL receipt
- Distributed **£99,600**
- Opportunity to invest this funding in local infrastructure / facilities
- Invest in community facilities
  - Village halls
  - Sports facilities
  - Play areas
  - Cycle parking
- Consider the Special Qualities, when Spending CIL



# Assets of Community Value

- A method for Communities to protect important community buildings or land
- Land or Building nominated by a local voluntary or community group
- Council assess whether the land or building nominated meets requirements for listing
- ACV must further social wellbeing of local community
- Registered assets trigger Community Right to Bid, if owner seeks to sell asset





# Assets of Community Value

- Morestead Church



- Petersfield Police Station



- Penns Place cricket pitch and pavillion



# Assets of Community Value

- Amberley Pottery Church



- Joyful Whippet, Lancing



- Findon Village Shop and Post Office





# Assets of Community Value

- Nutty Wizzard Café, Lewes



- The Dripping Pan, Lewes



- East Dean & Friston  
VH



# The Workshops session.....

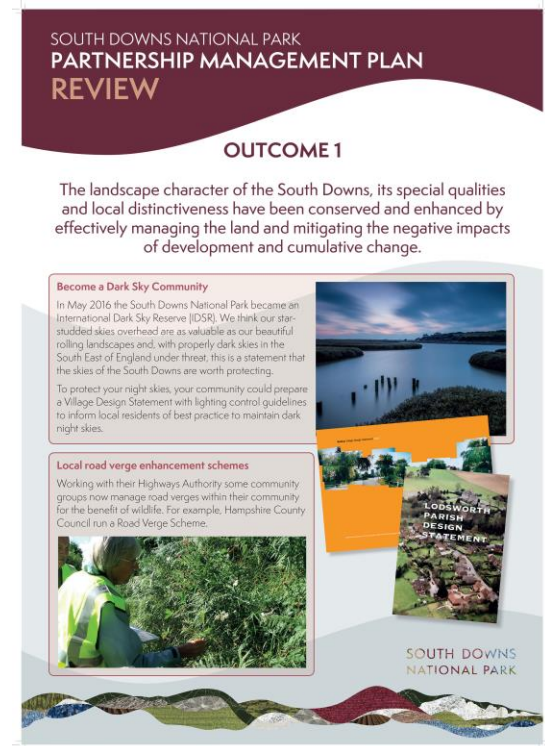
- Each Partnership Management Plan outcome is presented on a display panel
- Each Panel describes 1 or 2 projects that were delivered in the first 5 years of the PMP
- Delegates to circulate and review outcomes and projects
- **We want to understand / record local projects which contribute to PMP outcomes (112,000 people, resource, delivery of PMP)**
- Are you aware of local projects which contribute to a particular outcome
- Are you aware of community groups / organisations that are delivering projects that contribute to an outcome



# The Workshops session.....

## Use the project proposal form to....

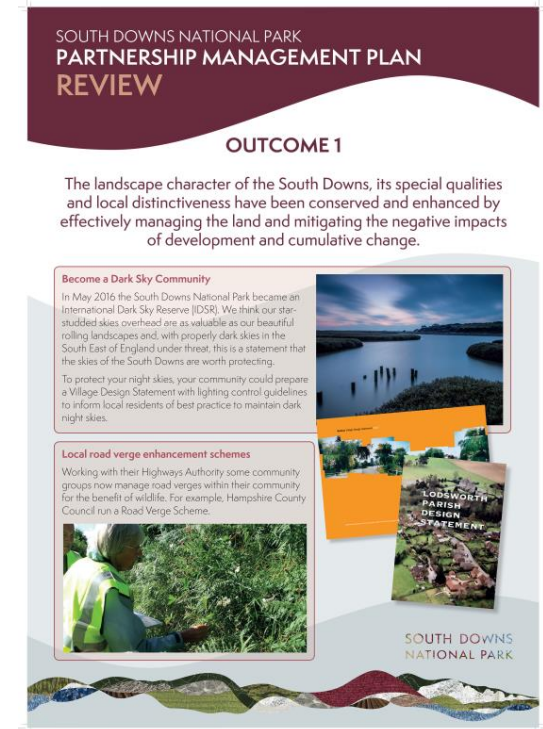
- Suggest current projects in your community which would contribute to a particular outcome
- Suggest current issues which affect your community and relate to a particular outcome
- Identify community groups / organisations that carry out work which relates to a particular outcome
- Return project ideas to Anne Rehill / Chris Paterson @ South Downs Centre, North Street, Midhurst, West Sussex, GU29 9DH  
Or [info@southdowns.gov.uk](mailto:info@southdowns.gov.uk)
- By Christmas for input to SDNPA Members workshop in January (or later if you need more time)





# The Workshops session.....

- Officers on hand to explain outcomes
- Officers on hand to describe projects
- Officers on hand to advise on possible projects
- Tea, Coffee and Sandwiches whilst you review the boards
- Use post it notes for simple ideas / issues
- Use project proposal form for more detail
- Submit forms tonight, or following PC / TC meeting



# South Downs Partnership Management Plan Review

## Questions and Answers

