

Planning Committee Meeting

13 December 2018

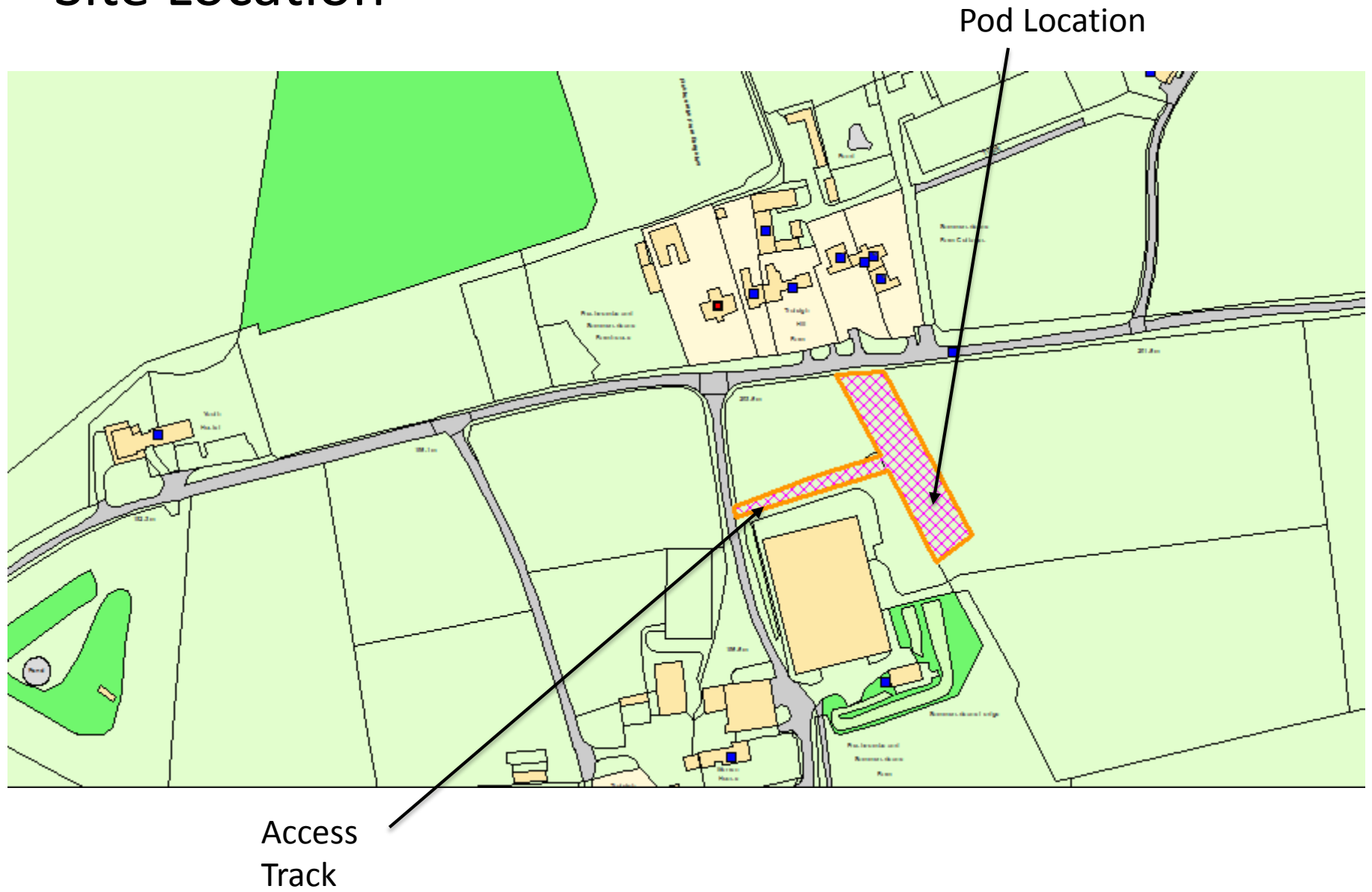
Agenda Item 8

SDNP/18/01189/FUL

Freshcombe and Summersdeane Farm
Truleigh Hill, Shoreham BN43 5FB



Site Location



Site Location



Public Footpaths



View from South Downs Way



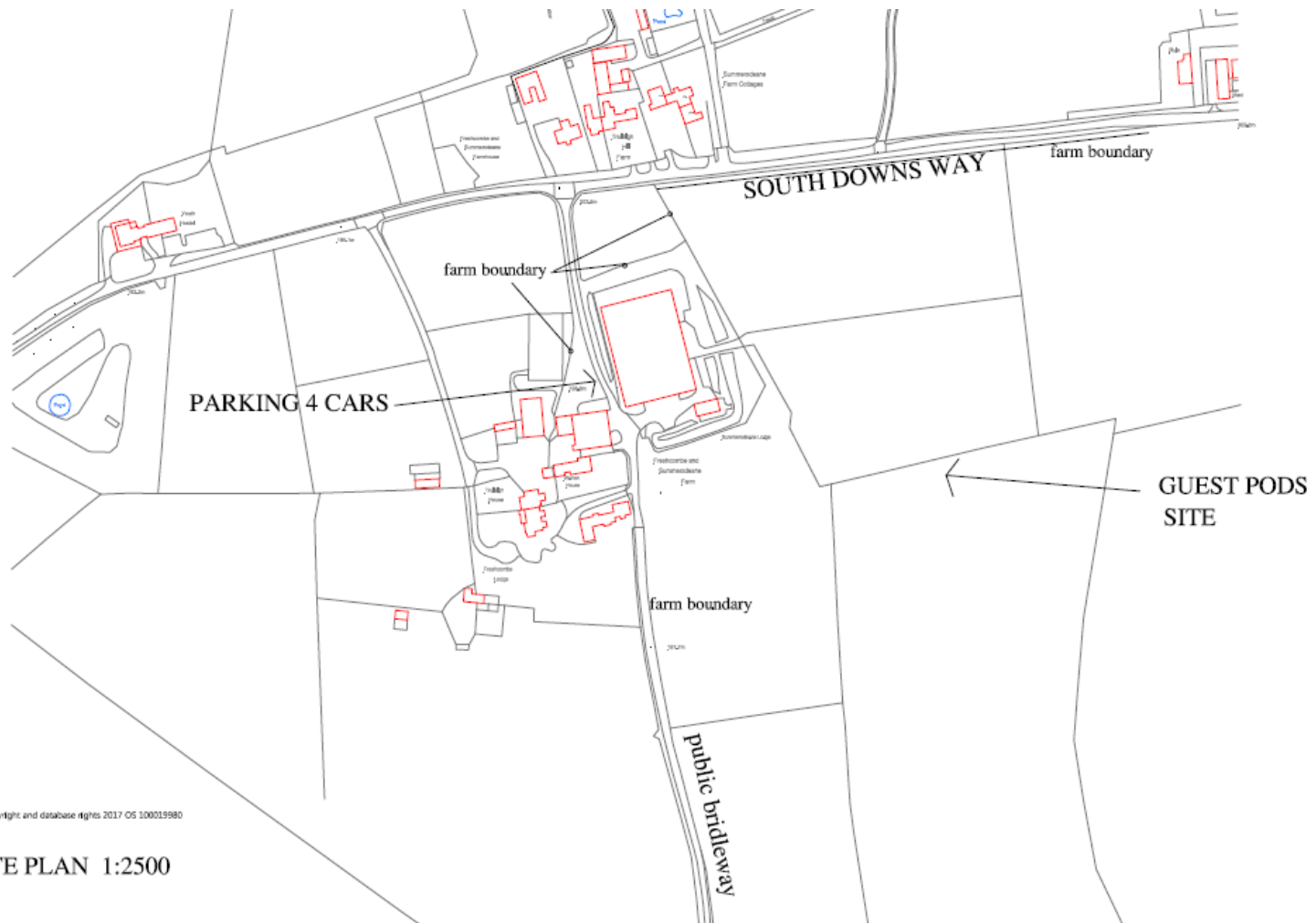
Landscape Character



Existing Landscape Character



Pre-app Site Layout



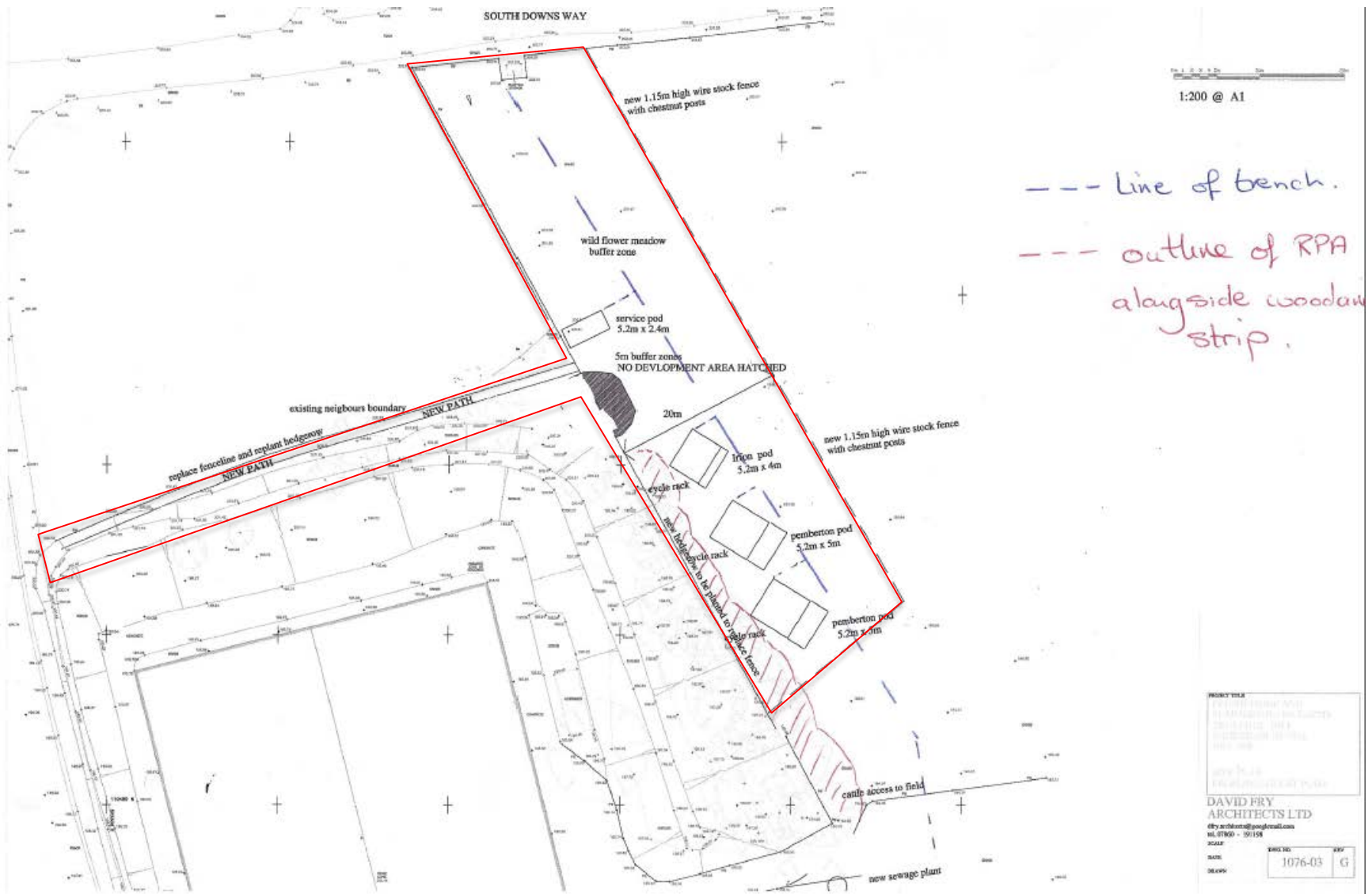
Crown Copyright and database rights 2017 OS 100019980

SITE PLAN 1:2500

Initial Site Layout



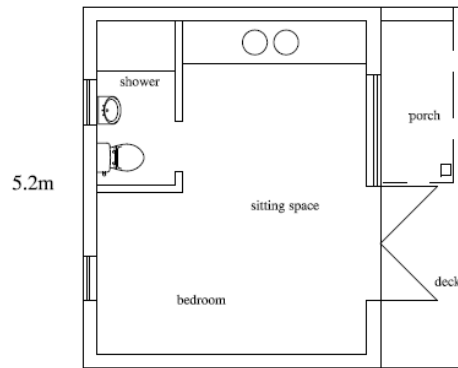
Amended Site Layout



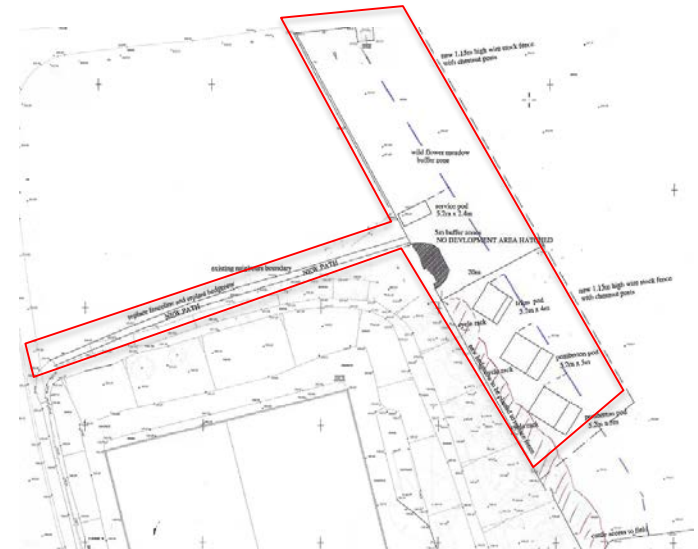
Site Location and Access



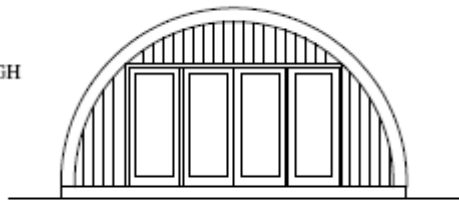
Smaller Pod



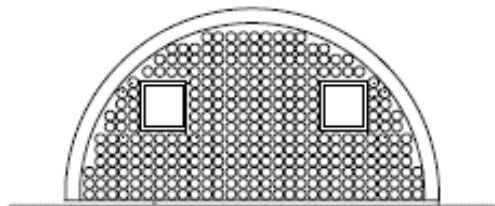
GROUND FLOOR PLAN - 1 no. Irfon microlodges 21 sq m external



2.75m HIGH



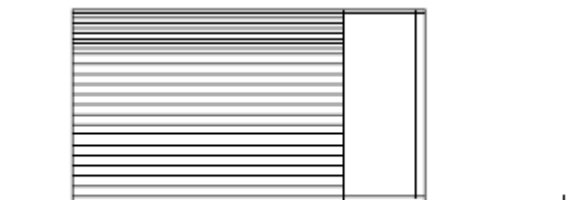
SOUTH ELEVATION



NORTH ELEVATION

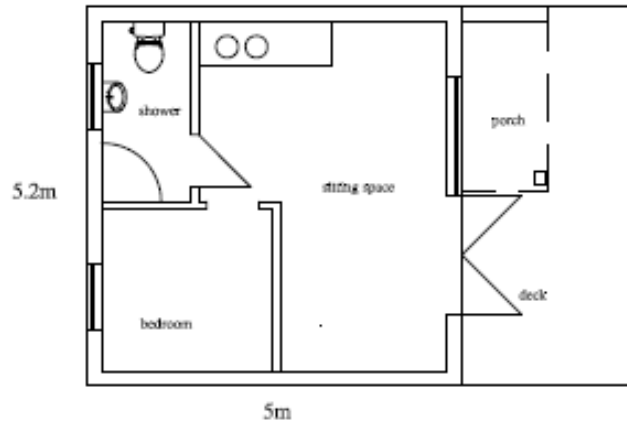


EAST ELEVATION

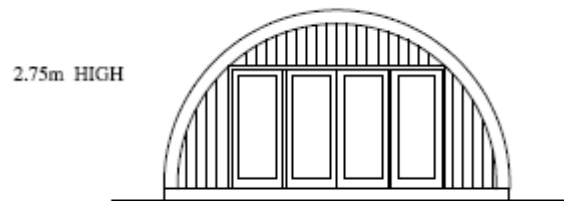


WEST ELEVATION

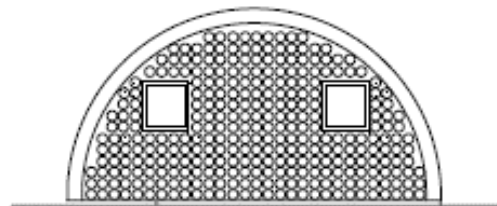
Larger Pod



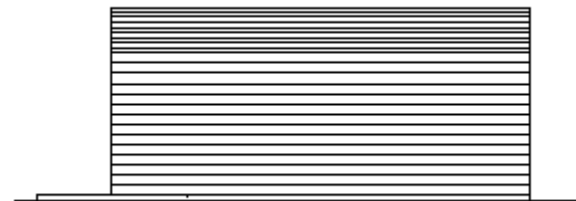
external



SOUTH ELEVATION



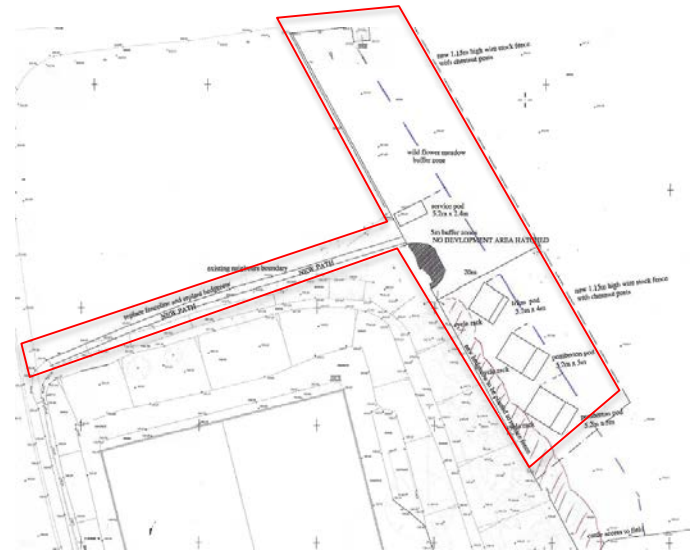
NORTH ELEVATION



EAST ELEVATION



WEST ELEVATION





Key Points for Consideration

- The proposal serves Purpose 2 in principle
- Benefits to tourism and local economy
- Sited close to the South Downs Way
- Farm diversification which in turn secures stewardship of the landscape
- Conserves the existing landscape character of the area



Recommendation

That the application be approved subject to the conditions set out in paragraph 10.1 of the report and the December 2018 update sheet.

