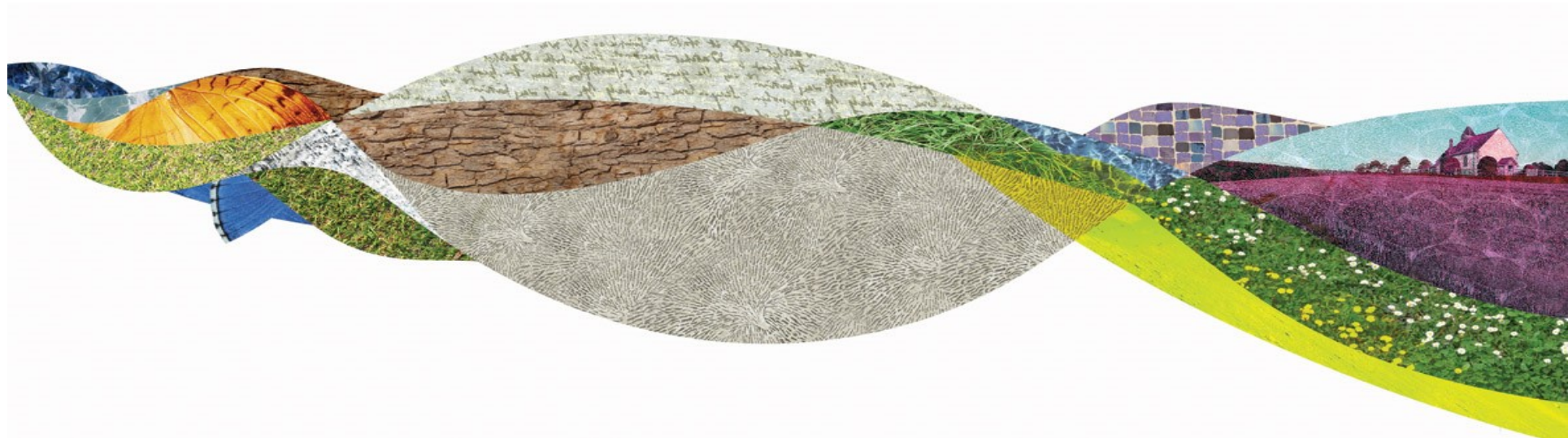


SDNPA Policy and Resources Committee 22 November 2018

Agenda item 14

Green Infrastructure Update

Roni Craddock
Infrastructure and Environment Strategy Lead



What is Green Infrastructure ?

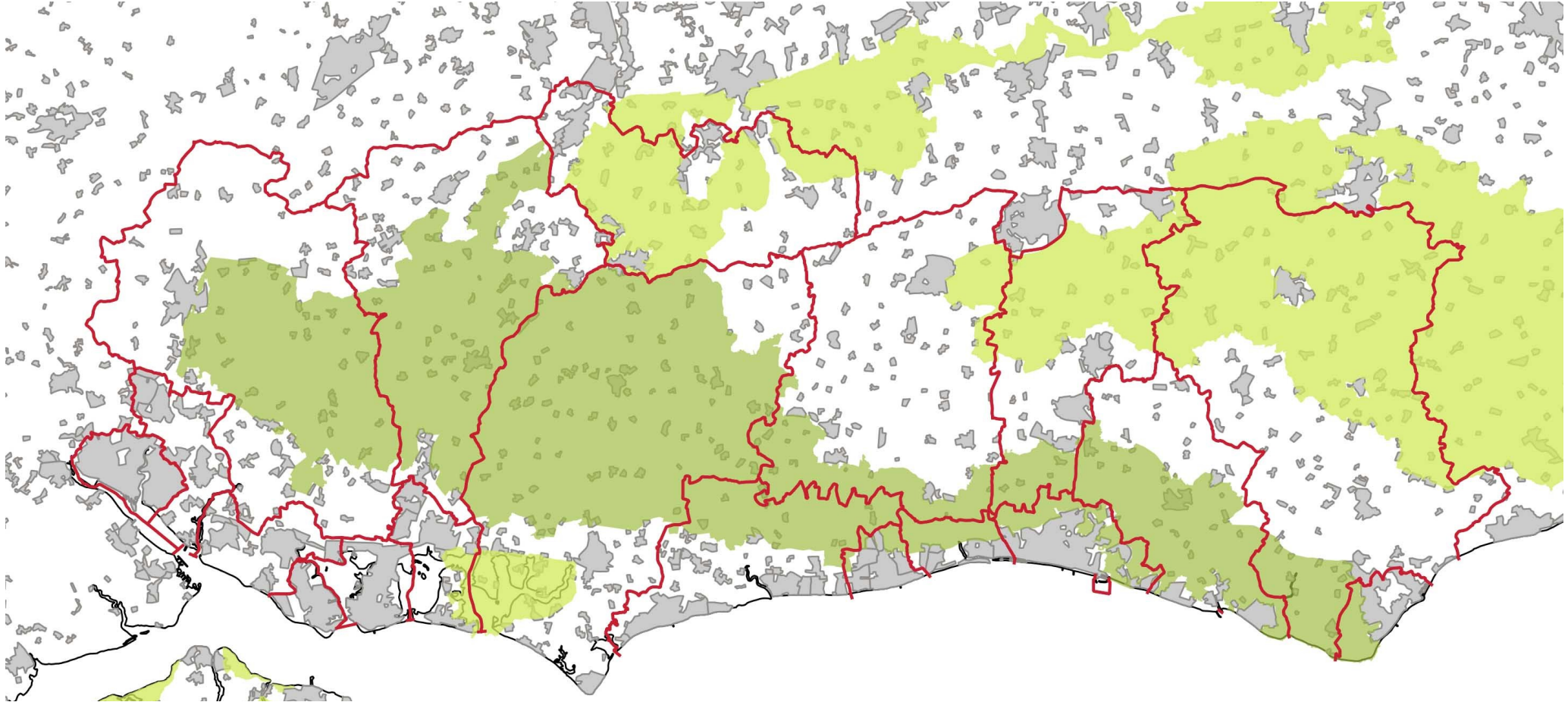
‘A network of multi-functional green and blue space, urban and rural which is capable of delivering a wide range of environmental and quality of life benefits for local communities.’ (NPPF) para 20

How does it relate to Ecosystem services, Natural Capital and Net Environmental Gain ?

- **Natural capital** is a valuation of natural assets;
- **Ecosystem services** is an assessment of the natural services that those assets provide;
- **Green infrastructure** planning is the tool by which these assets and natural processes can be enhanced, extended, connected into a network and incorporated with human activity. In this way GI can achieve Net Environmental Gain alongside other sustainability and environmental measures



The South Downs GI Framework Area



SDNPA Green Infrastructure Update

Date	Action	Examples
Complete by end 2018/19	Publish South Downs Green Infrastructure Framework documents	<ul style="list-style-type: none"> • Update 2014 terminology • Review language of GIF summary for non planners • Prepare GIF documents for publishing • Launch GIF on SDNPA website
Complete by end 2018/19	New Communications strategy for GI/ES/NC/NEG	<ul style="list-style-type: none"> • Define & engage wider audience • Create simple brand & logo • Start the dialogue • Sector specific information • SDNPA Internal NC working group • Refresh on regional GI/NC/ES work
Commence 2019/20	Working with the evidence	<ul style="list-style-type: none"> • Evidence for Nature Recovery Network • Informing decision making about projects and planning • GI provision in development outside the SDNP • Informing SDNPA Health and well-being approach • Advising Neighbourhood Planning teams • Produce design guidance on GI and ES • Develop pilot GIIA Strategy
Develop the approach going forwards from 2019/20	Delivering GI and Net Environmental Gain	<ul style="list-style-type: none"> • Identify and prioritise projects, cost and plan • Develop a market place • PMP Working with partners on many levels • Planning decisions based on ES assessments • CIL & I06 Agreements with a range of partner authorities • Landscape scale projects (GIAs) & Project development for large scale initiatives

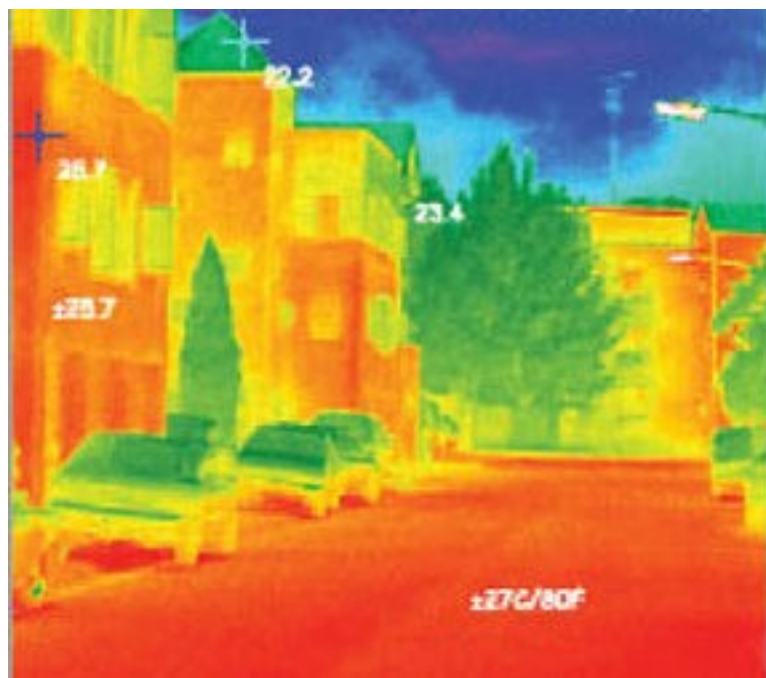
GI Health and well being benefits at a local/community level



GI and Health and Well being - settlement level

Urban heat effects – cause premature death from Cardiac, kidney and respiratory disease (7000pa by 2050);

EAC (July 2018) calls for Urban green infrastructure target for local authorities as part of the DEFRA metrics for the 25 yr plan



Thermal imaging of urban environment



House of Commons
Environmental Audit Committee

Heatwaves: adapting to climate change

Ninth Report of Session 2017–19

Report, together with formal minutes relating to the report

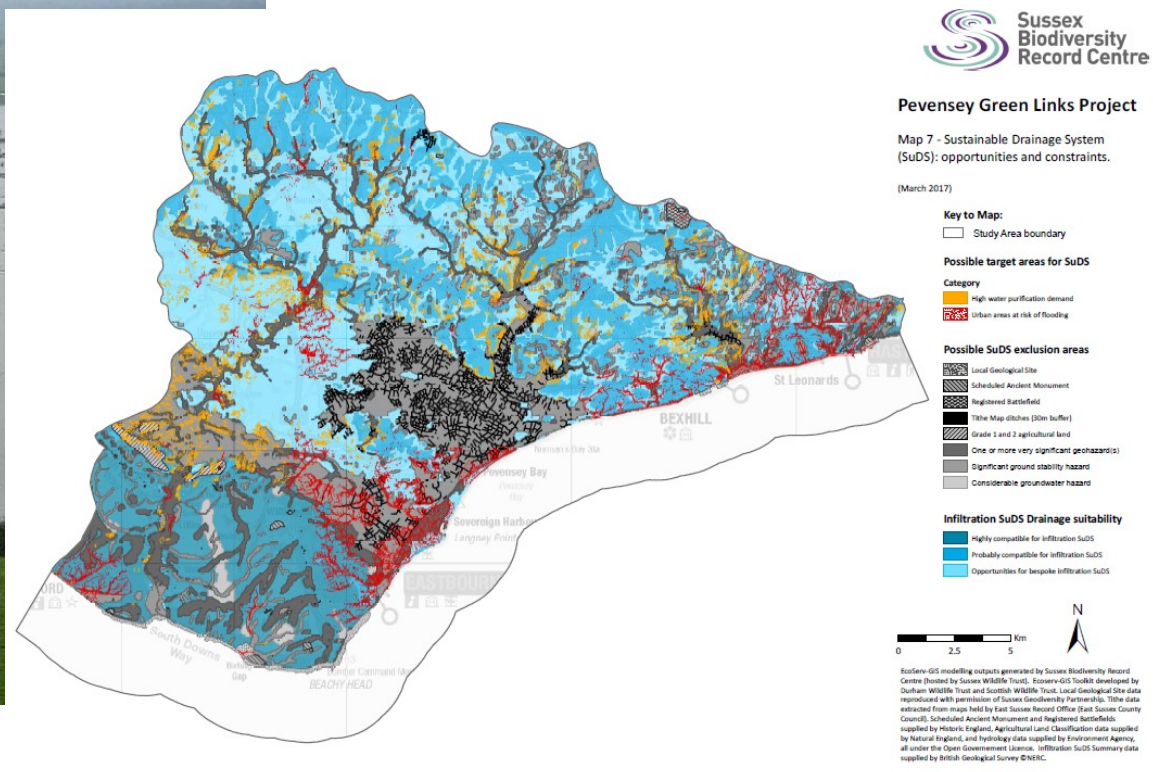
Ordered by the House of Commons to be printed 18 July 2018

HC 826
Published on 26 July 2018
by authority of the House of Commons

GI Health and well being benefits at a landscape scale/societal level



Pevensey Green Links Project
Map 7 - Sustainable Drainage System (SuDS): opportunities and constraints.
(March 2017)



SOUTH DOWNS NATIONAL PARK

