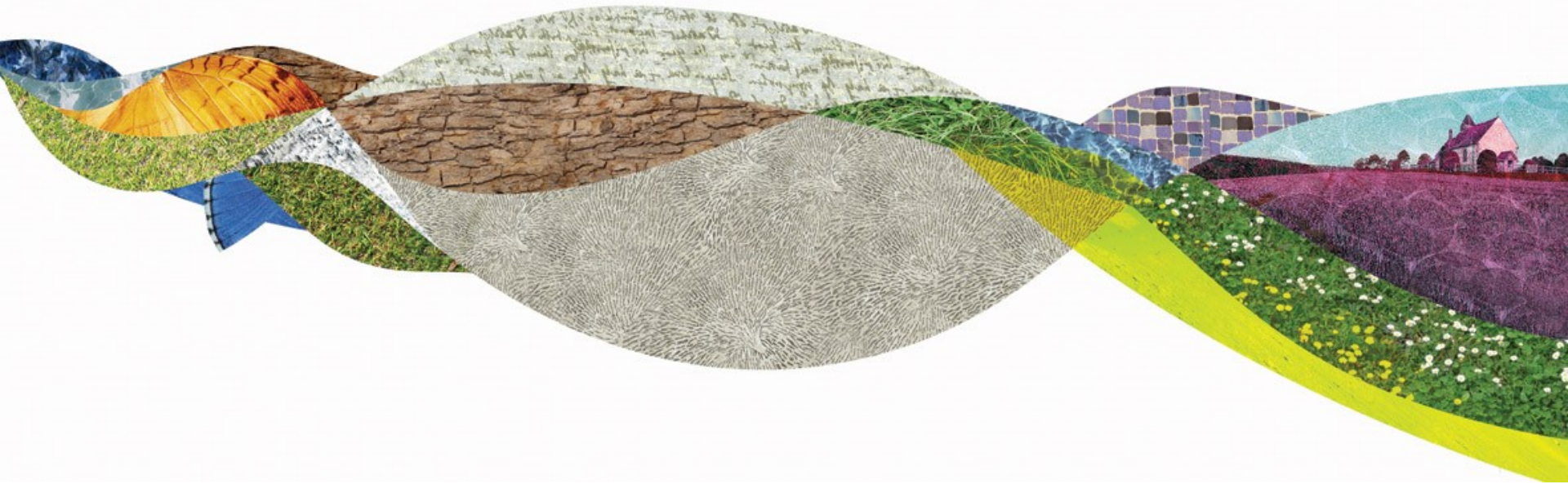


# Planning Performance – Comparison with the National Picture



# Contents

- Different types of planning applications
- Designation criteria
- Speed of decision making - national picture and our performance
- Extensions of time
- Appeals - national picture and our performance
- Customer Satisfaction Survey



# Different types of planning applications

- **Major** = 10+ dwellings, over a 1,000 sq m of floorspace, site area exceeds a hectare, minerals applications, waste applications. 13 week target determination period (16 weeks if EIA development)
- **Minor** - 1-9 dwellings, up to 999 sq m of office, industrial, retail floorspace. 8 week target determination period
- **Other** - householders, change of use, listed building consent. 8 week target determination period
  
- Also 'other' others
- Consistent benchmark across England



# Performance

	2018 Criteria	Q4 actual SDNPA	National Average Q4 (Source MHCLG, 2018)	Q1 actual SDNPA	National Average Q1 (Source MHCLG, 2018)
Majors	<b>60%</b>	100%	88%	71%	87%
Minors	<b>70%</b>	89%	85%	73%	84%
Others	<b>70%</b>	87%	90%	87%	90%

- Quality of decisions criteria

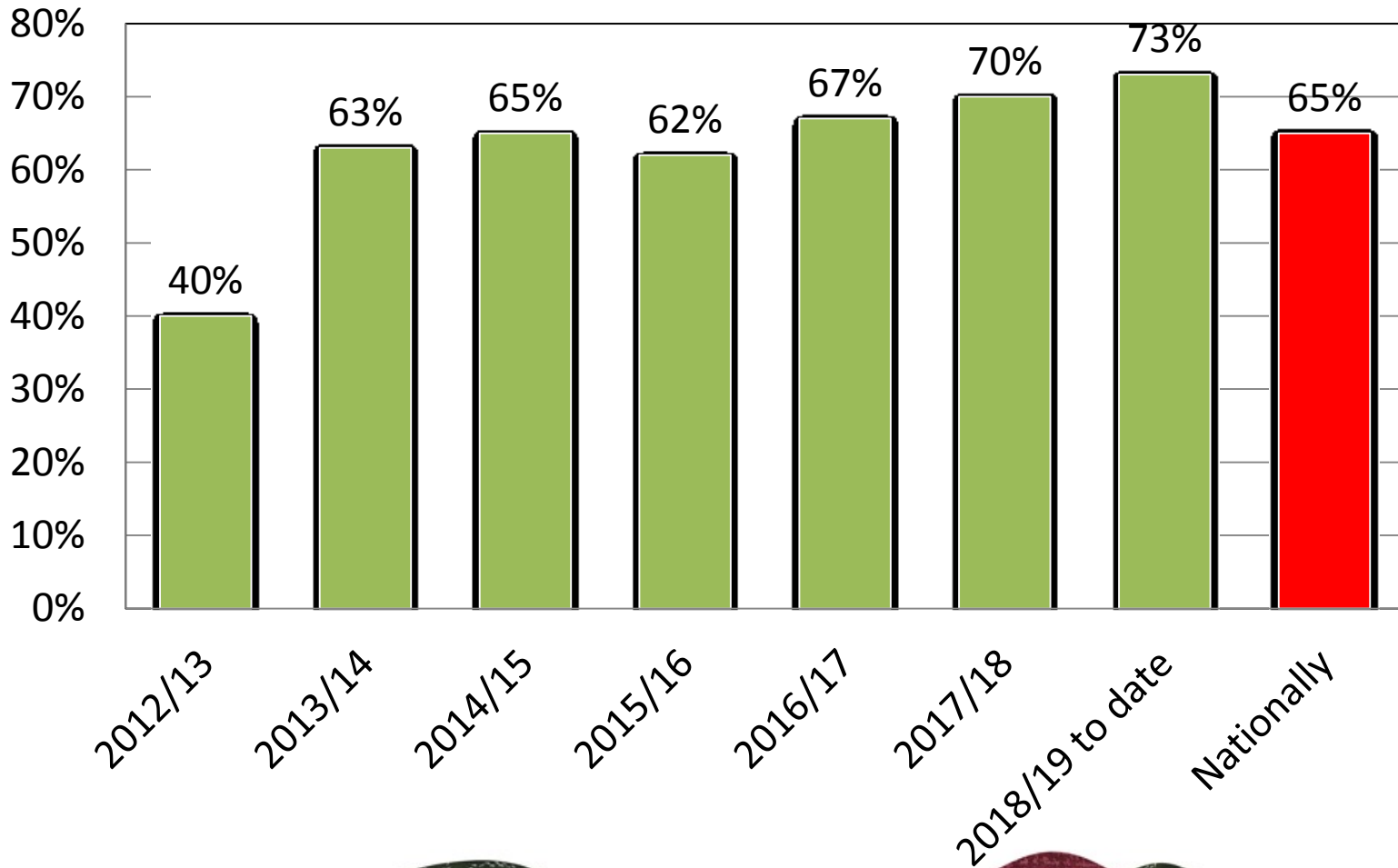


# Extensions of time

- Have to be agreed in writing by the applicant
- 2017/18:
  - Used in approximately 25% of decisions nationally
  - Used in approximately 28% of decisions at SDNPA
- 2018/19 Q1
  - Used in approximately 27% of decisions nationally
  - Used in approximately 28% of decisions at SDNPA



# Appeal Performance - Dismissed



# Customer Satisfaction Survey

- Overall satisfaction in the planning service has increased from 67% in 2014 to 69% in late 2017 survey
- Trialling satisfaction survey on every decision notice from 1 October



Thank You

