

Planning Committee Meeting

11 October 2018

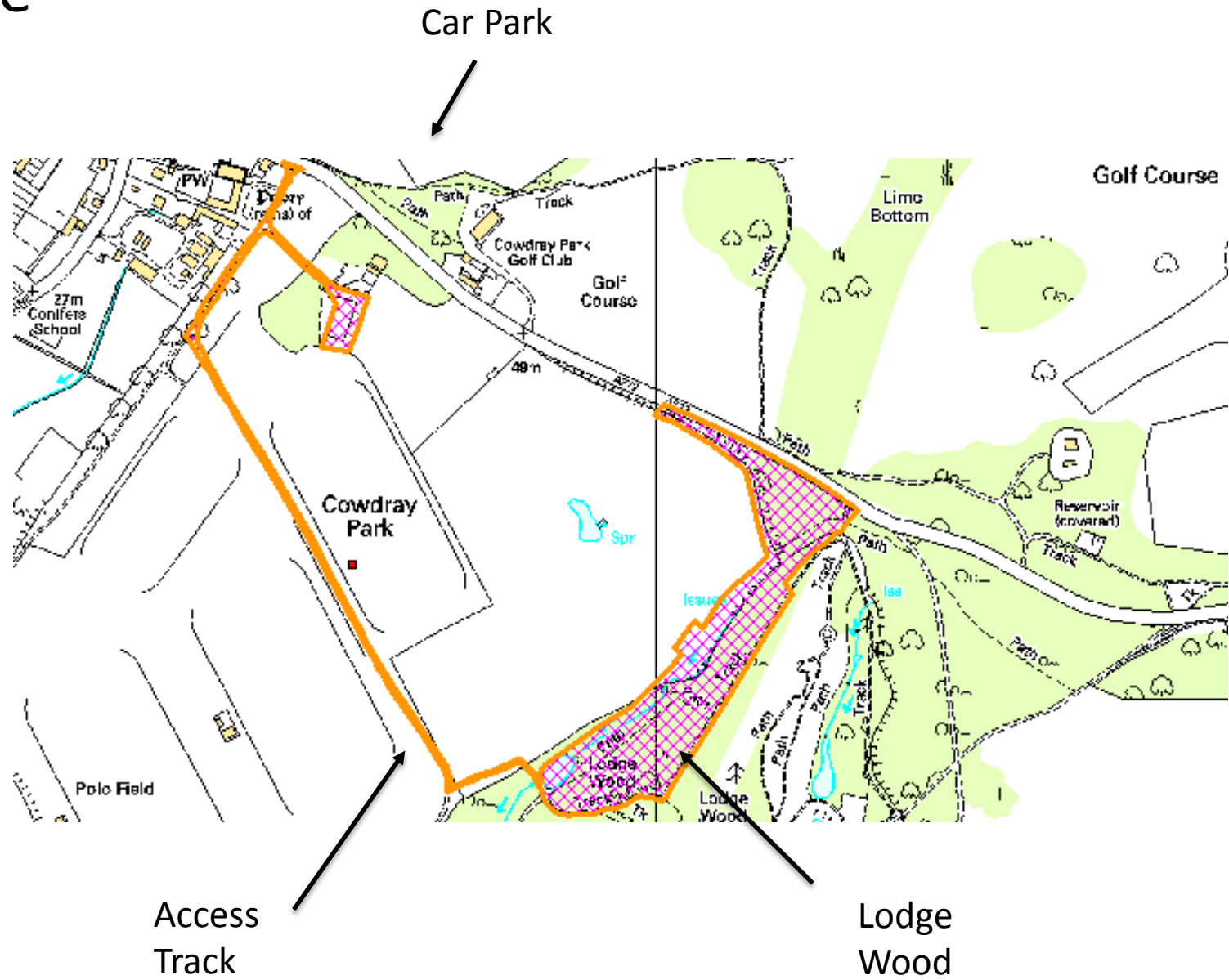
Agenda Item XX

SDNP/18/00643/FUL

Land South of A272, Cowdray Park
Cowdray Estate, Easebourne



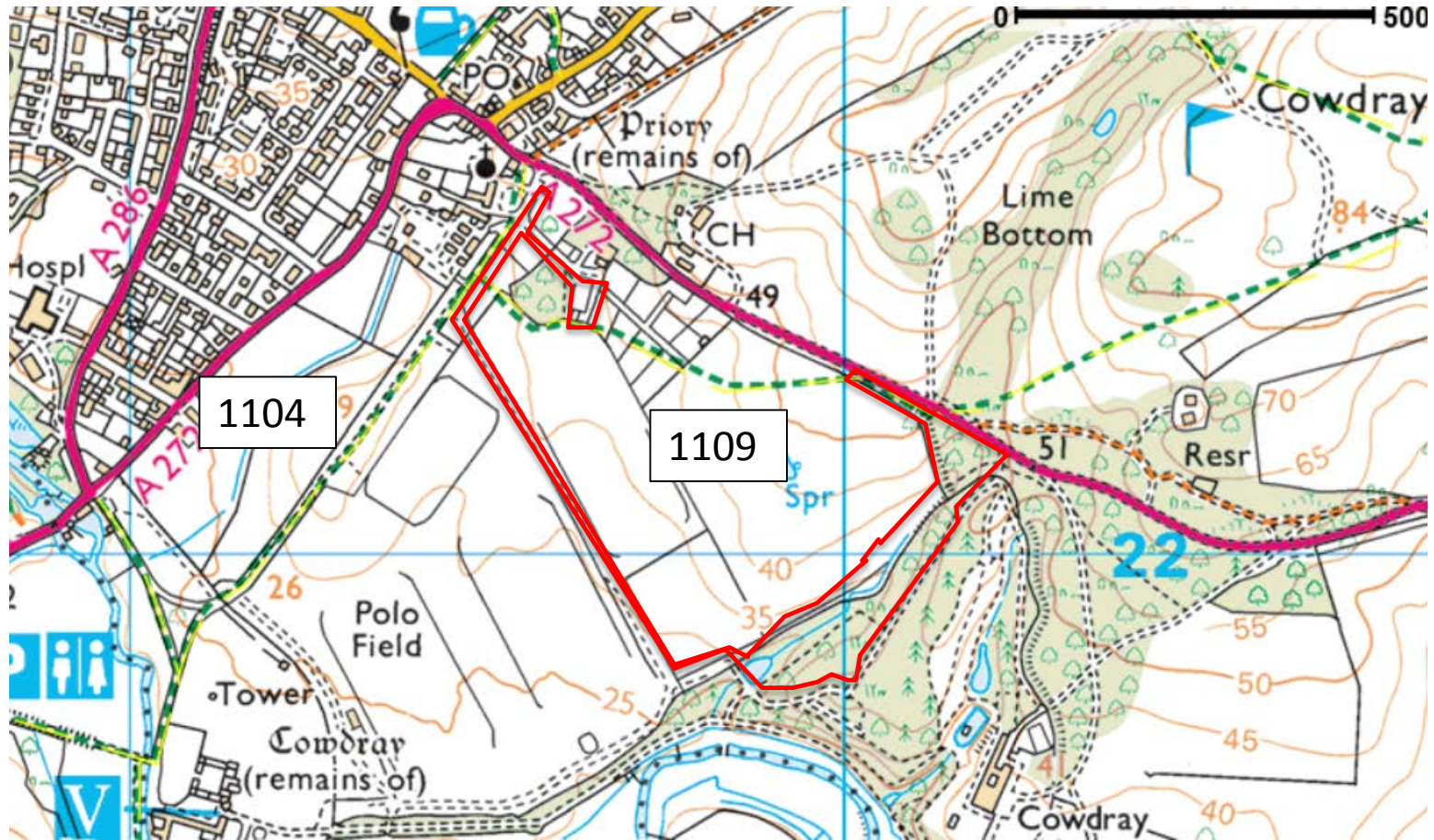
Site



Site



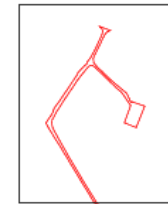
Site and Public Footpaths



Proposed Car Park

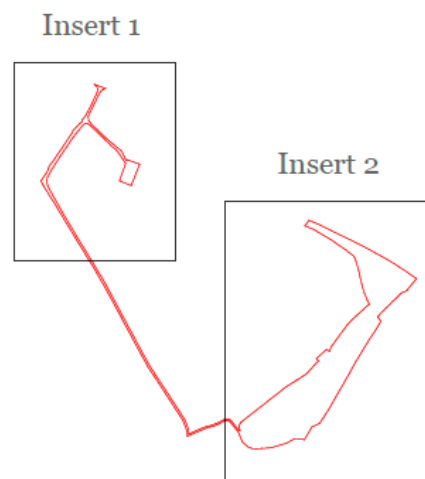


Insert 1



Insert 2

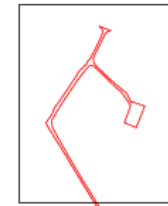




Site Layout



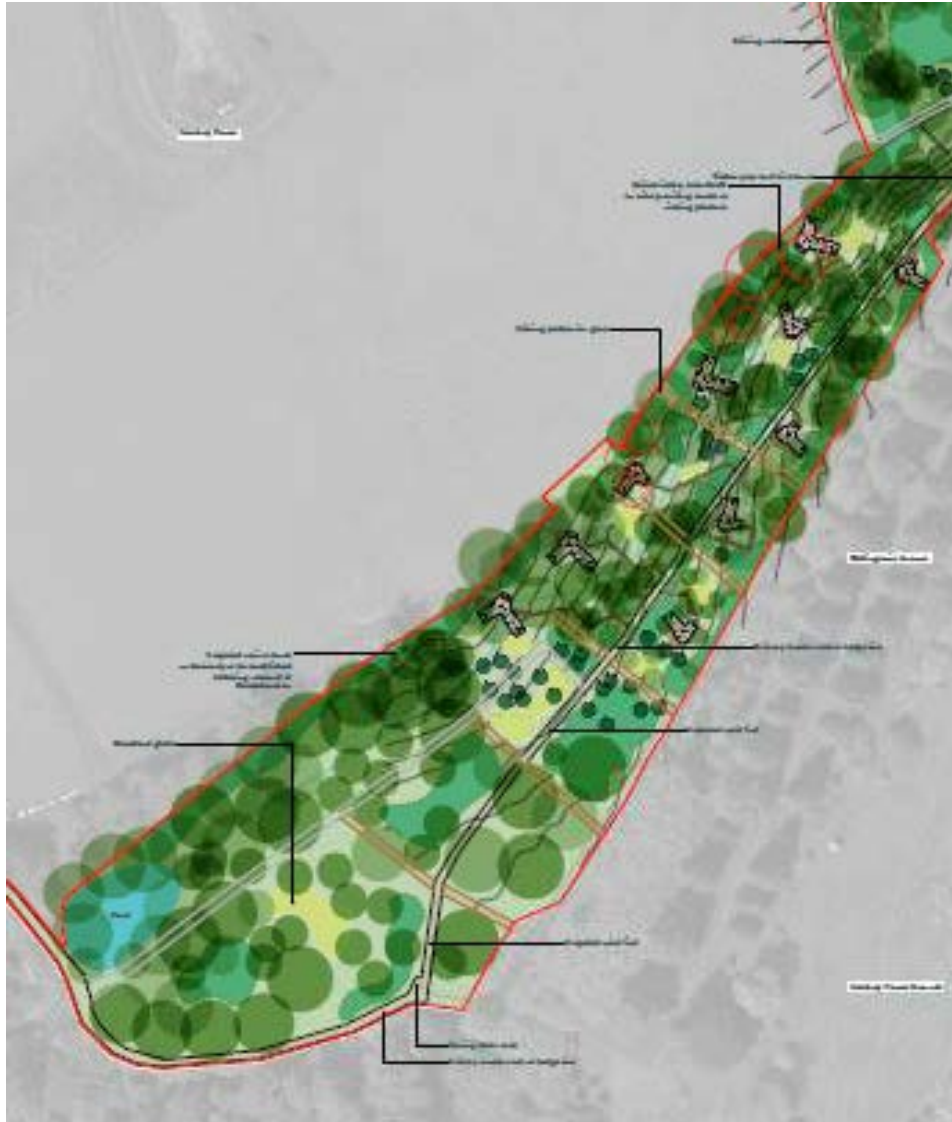
Insert 1



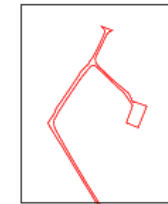
Insert 2



Site Layout

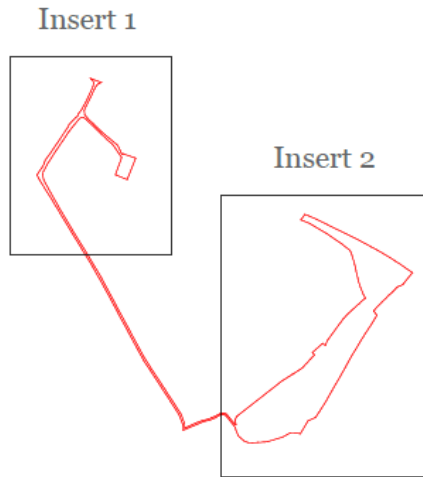


Insert 1

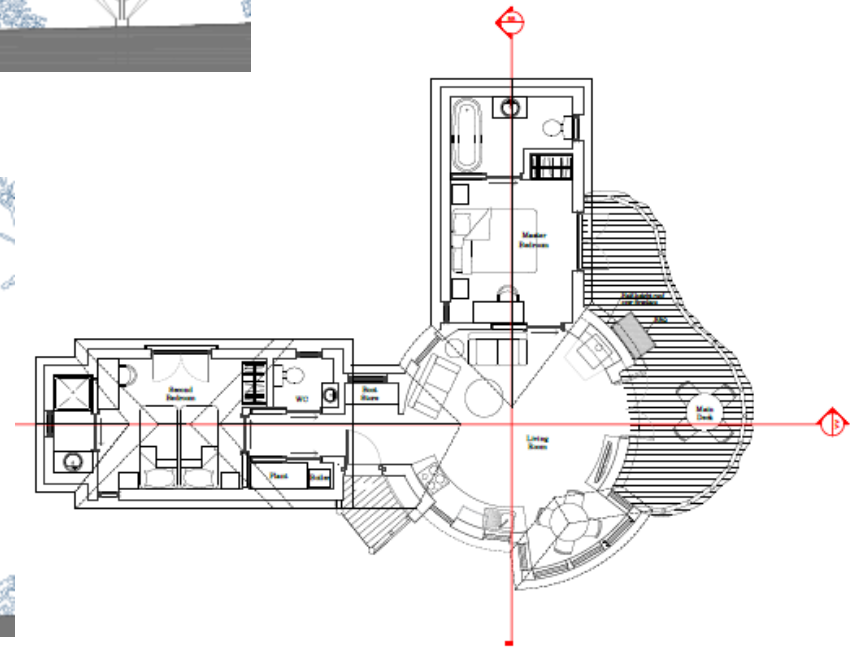
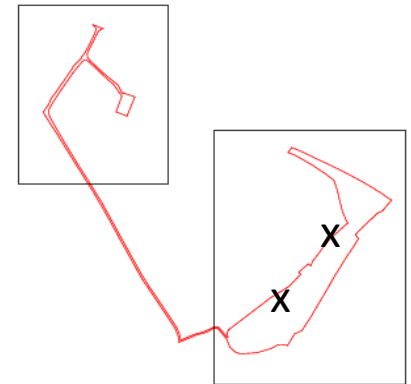


Insert 2

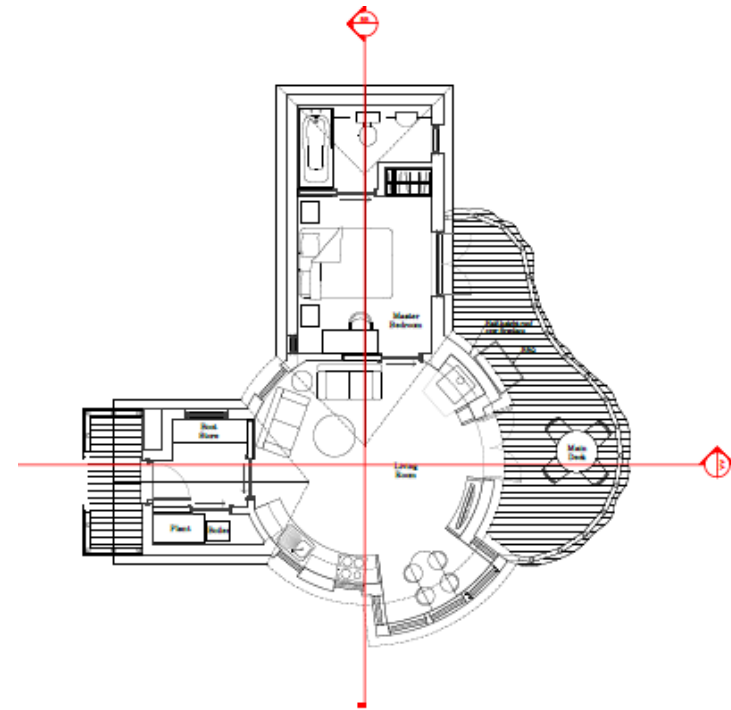
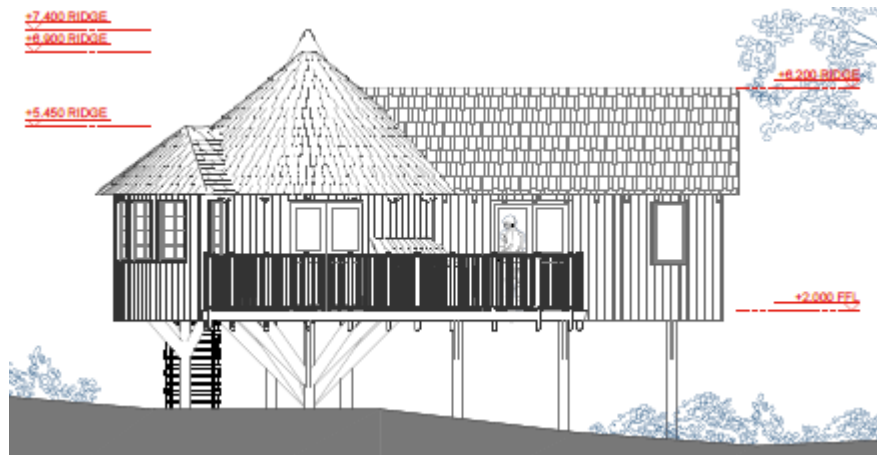
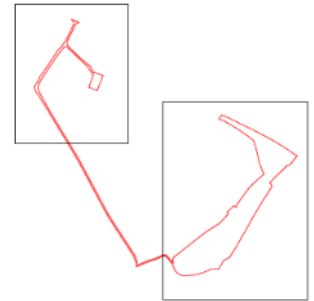


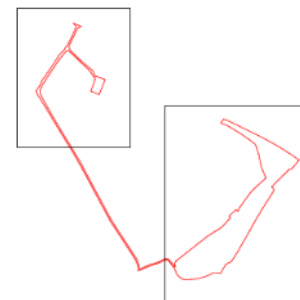


2 Bedroom Unit (2No)

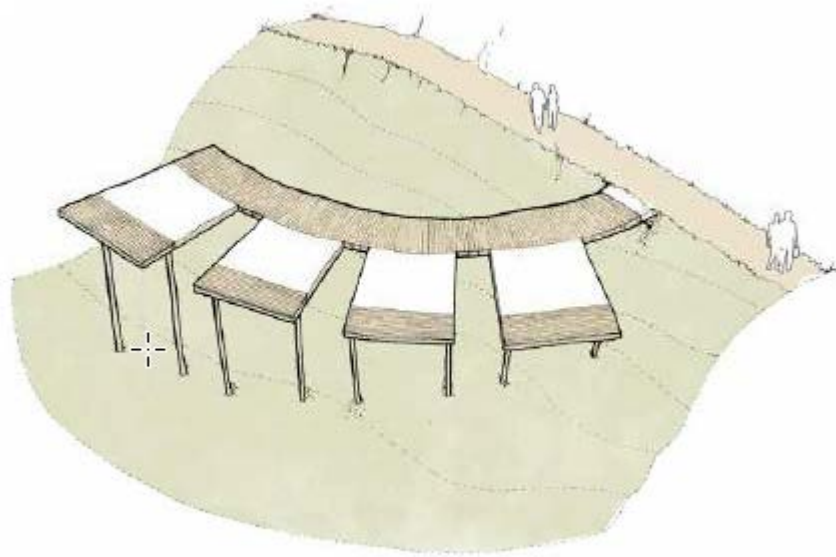
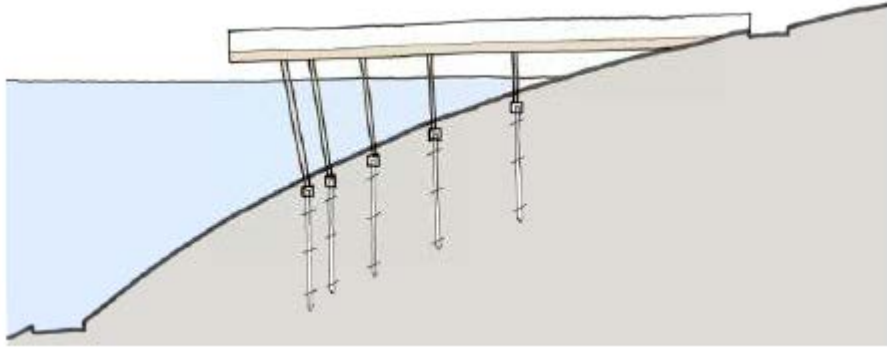
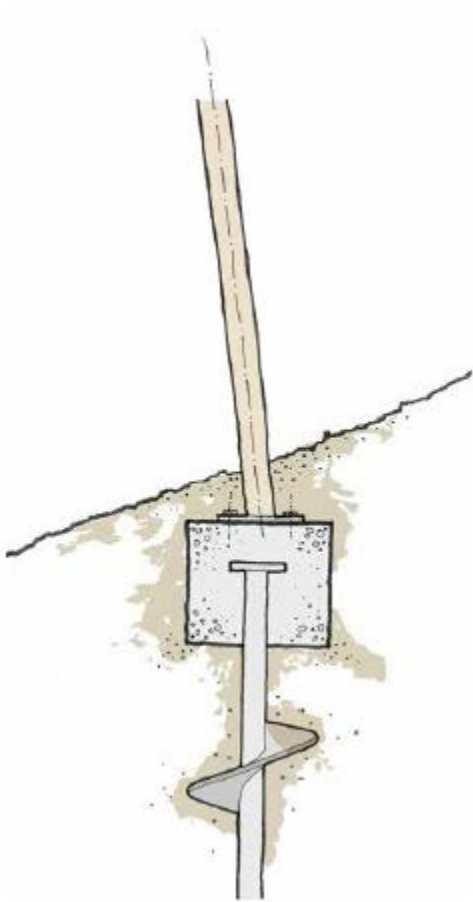


1 Bedroom Unit (8No)

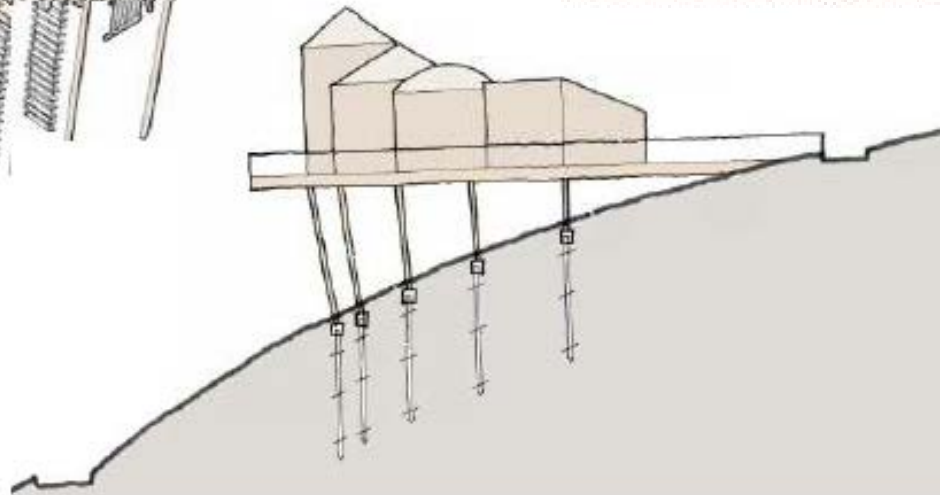
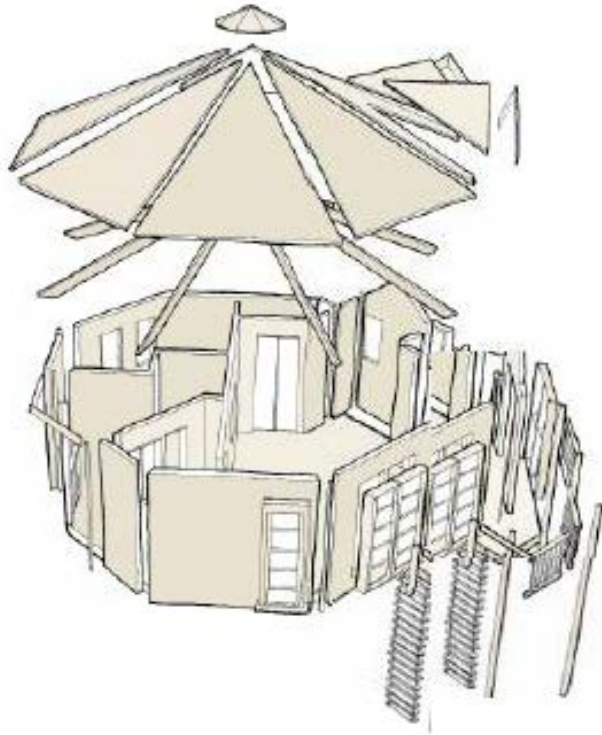




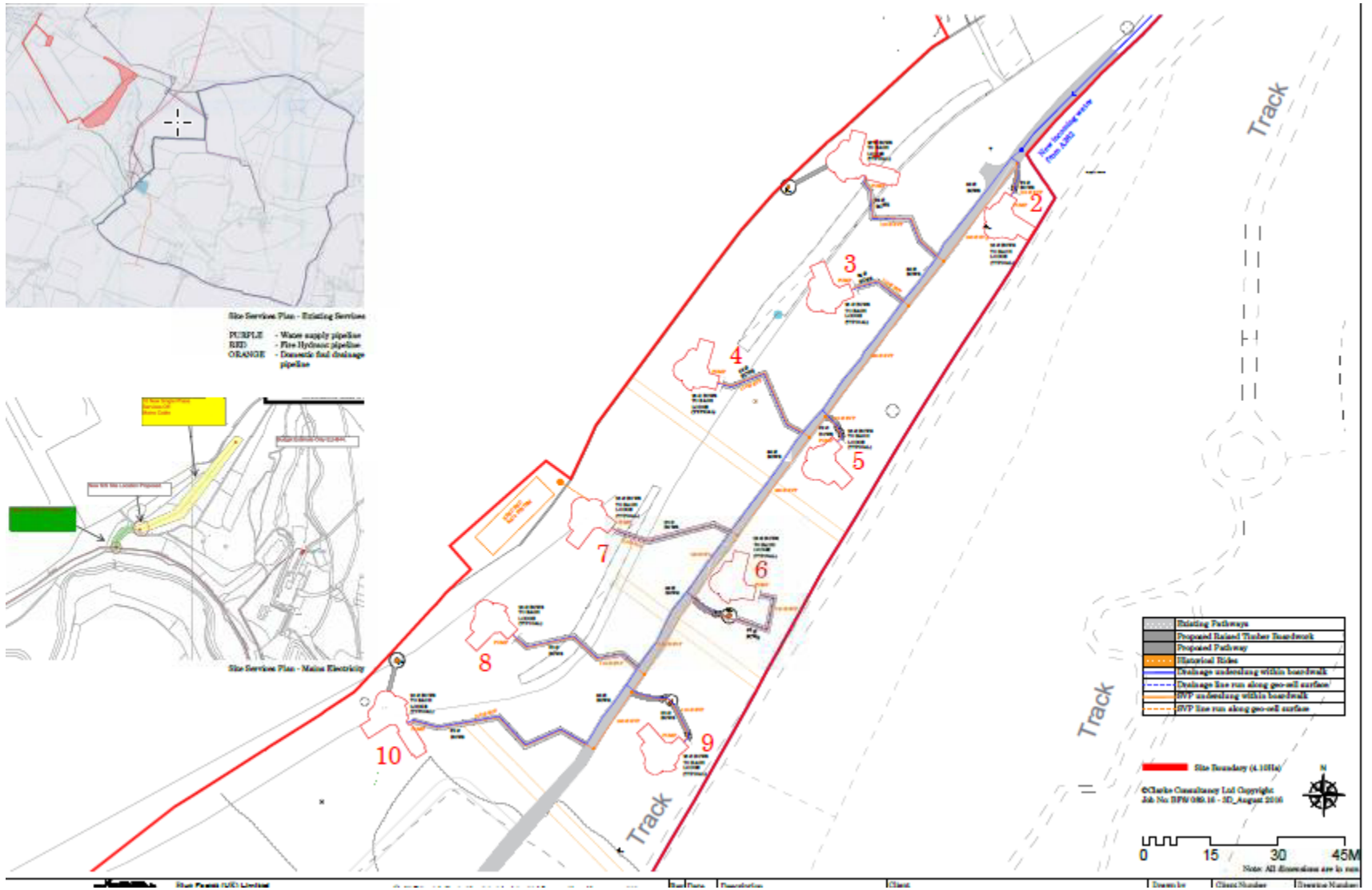
Construction & Services



Construction & Services



Construction & Services



Key Points for Consideration

- The proposal serves Purpose 2 in principle
- Benefits to tourism and local economy
- Agreement in principle to upgrade footpaths to cycle paths

However

- The impact of the proposal on the landscape character of the woodland is contrary to Purpose 1

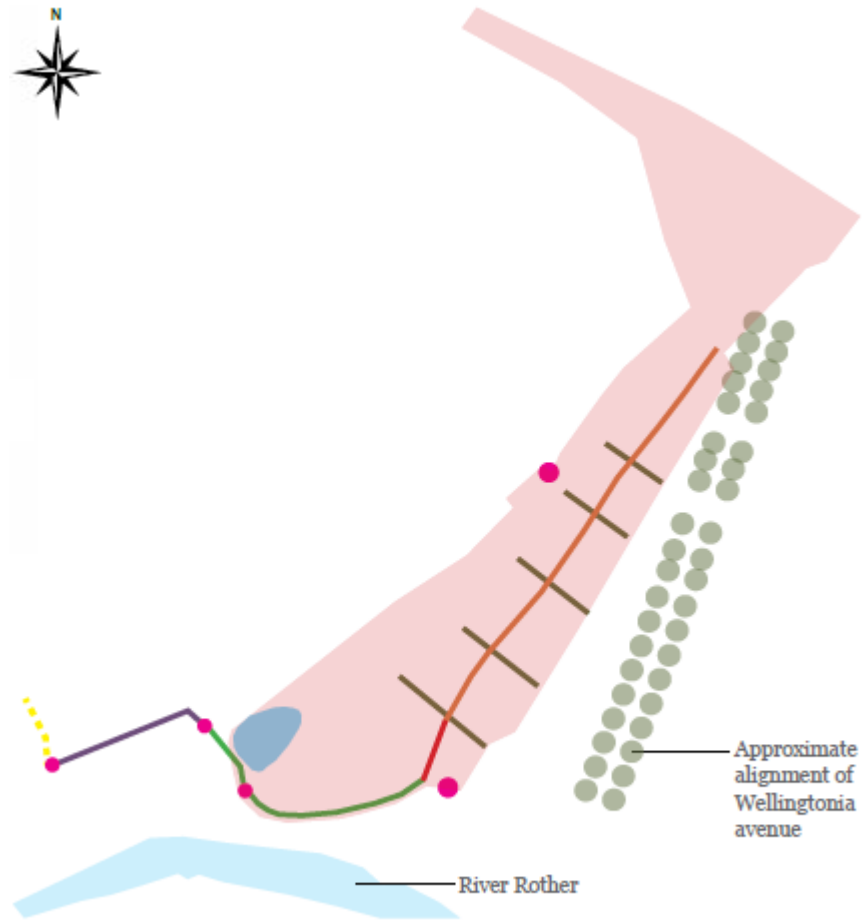


Recommendation

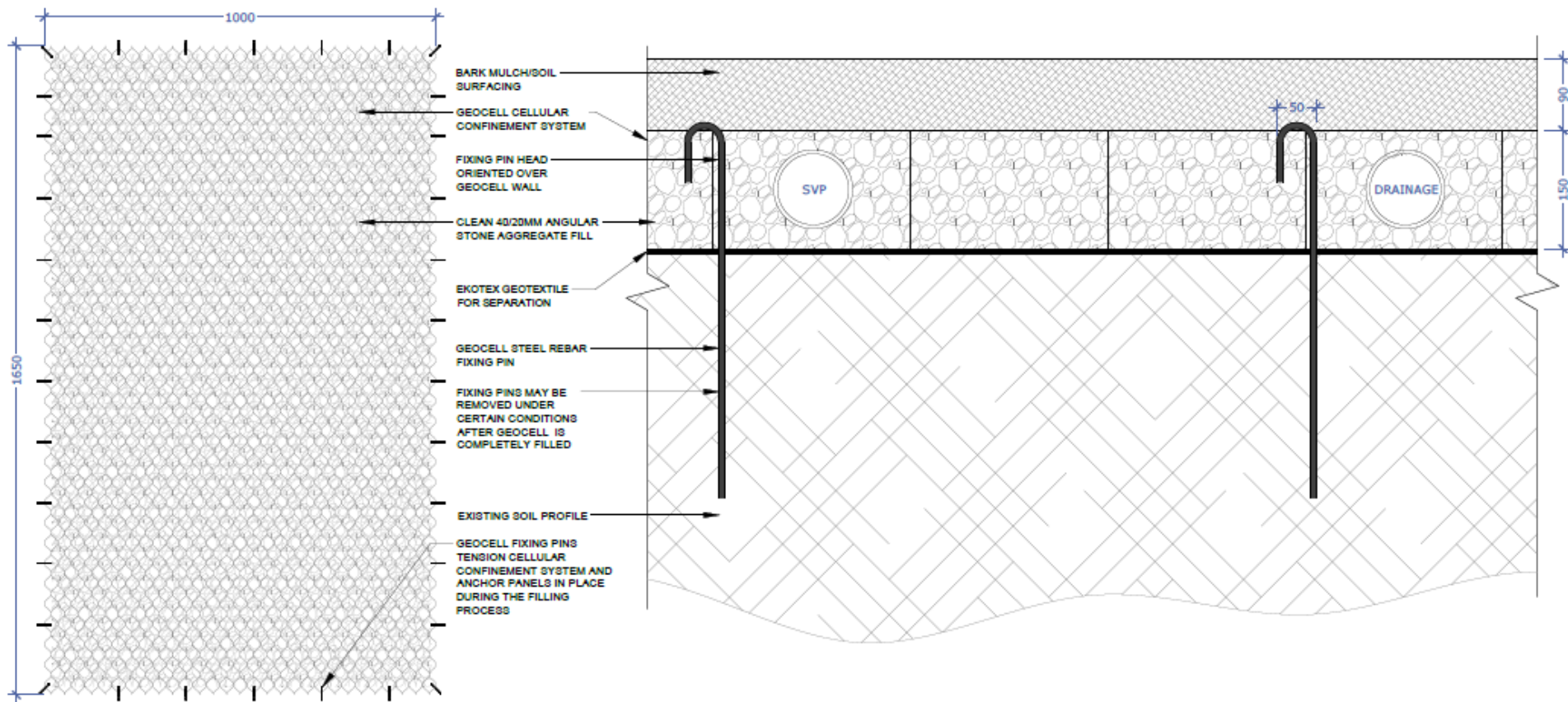
That the application be refused for the reasons set out in paragraph 10.1 of the report



Historic Rides



Geocell Construction and Services



Views from Footpath 1109



Views from Footpath 1109



Views from Footpath 1109



Views from Footpath 1109



Wellingtonia Avenue

