



Report to the Secretary of State for Environment, Food and Rural Affairs

by Robert Neil Parry BA DIPTP MRTPI

**An Inspector appointed by the Secretary of State for
Environment, Food and Rural Affairs**

The Planning
Inspectorate
Temple Quay House
2 The Square
Temple Quay
Bristol BS1 6PN
☎ GTN 1371 8000

Date:
June 2007

THE SOUTH DOWNS NATIONAL PARK

INSPECTOR'S REPORT

ADDENDUM

Inquiry held between 10 November 2003 and 18 March 2005

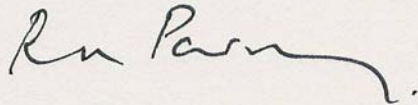
Inquiry held at The Chatsworth Hotel, Steyne, Worthing, BN11 3DU

SOUTH DOWNS NATIONAL PARK – CORRIGENDUM/ADDENDUM REPORT

Inspector's Note.

Subsequent to the submission of my report, Defra noted that the recommendation at paragraph 7.208 of my original report did not reflect the conclusions set out in paragraph 7.206. I have, therefore, provided additional text to address this point.

The remainder of this report contains a number of maps which are intended to clarify the proposed SDNP boundary. As such, the maps in this report replace those included in Volume 3 of the original report.

A handwritten signature in dark ink, appearing to read 'R N Parry', with a long, sweeping horizontal stroke extending to the right.

R N Parry
20.6.2007

South Downs National Park

Report Addendum

Contents	Page
Comments on Map 15	3
Inspector's recommendation at paragraph 7.208	4
Comments on Map 2	5
Comments on Map 7	6
Comments on Map 15A	7
Comments on Map 17	8
Comments on Map 18	9
Comments on Map 19	10
Comments on Map 21	11
Comments on Map 21A	12
Comments on Map 22A	13
Comments on Map 23	14
Comments on Map 24/24A	15
Map 24A	16
Comments on Map 25A	17
Comments on Map 29/29A	18
Map 29A	19
Comments on Map 31	20
Comments on Map 32	21
Comments on Map 33	22
Comments on Map 34	23
Comments on Map 38	24
Comments on Map 43A	25
Comments on Map 48	26

Comments on Map 15

Inspector's Recommendation at 7.208

To read:

"Other than to exclude the Gallops, no change to the designation order boundary".

Please see the following page.

Inspector's Conclusion

7.206 The Agency and the Council now agree that the Gallops should be excluded from the National Park. I am of the same opinion.

7.207 While the Council's overall assessment of the J1 landscape character area tends to suggest that it should be excluded from the PSDNP, on balance I consider that the Toat Monument land merits inclusion as an exception. I recognise that the local landscape has been affected by horsiculture and disturbance from the A29 but the hill in question is a relatively conspicuous and attractive landscape feature lifted by the presence of the listed monument at its crest. In my view this bit of high ground provides an attractive edge to the Arun Valley and is reasonably included in the PSDNP. The wider sweep provides a range of recreational opportunities albeit that there is no public access to the crest of the hill. Overall I consider that the natural beauty and recreational opportunities criteria are both satisfied.

Inspector's Recommendation

7.208 Other than to exclude The Gallops, no change to the designation order boundary.

* *

SECTION I (see CD23 for extent)

Introduction

7.209 The objections to the boundary in section I are considered under the following headings:

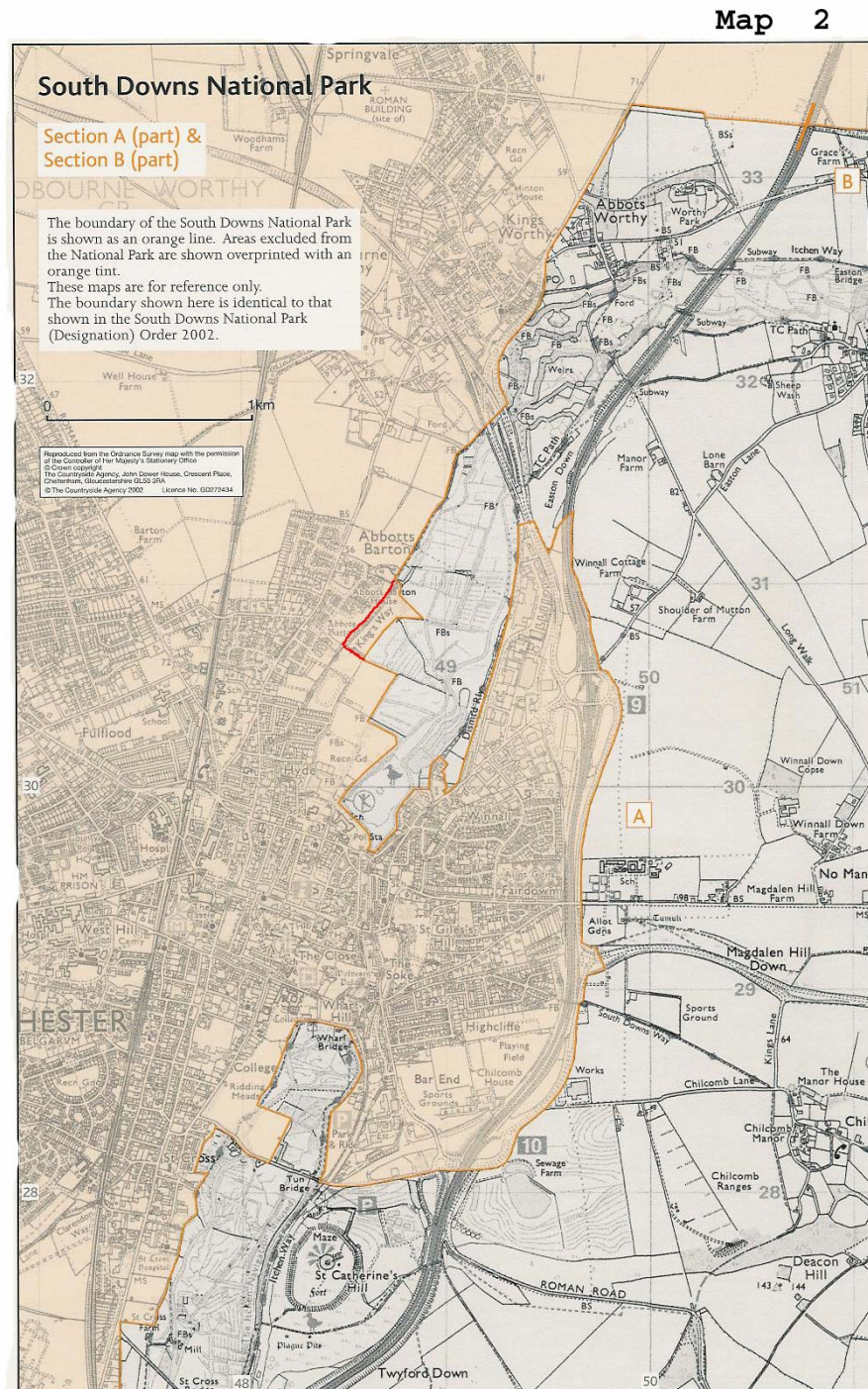
- Coldwaltham

Coldwaltham

Case for objector

7.210 Having reviewed the PSDNP boundary in the light of its District-wide landscape character assessment, Horsham

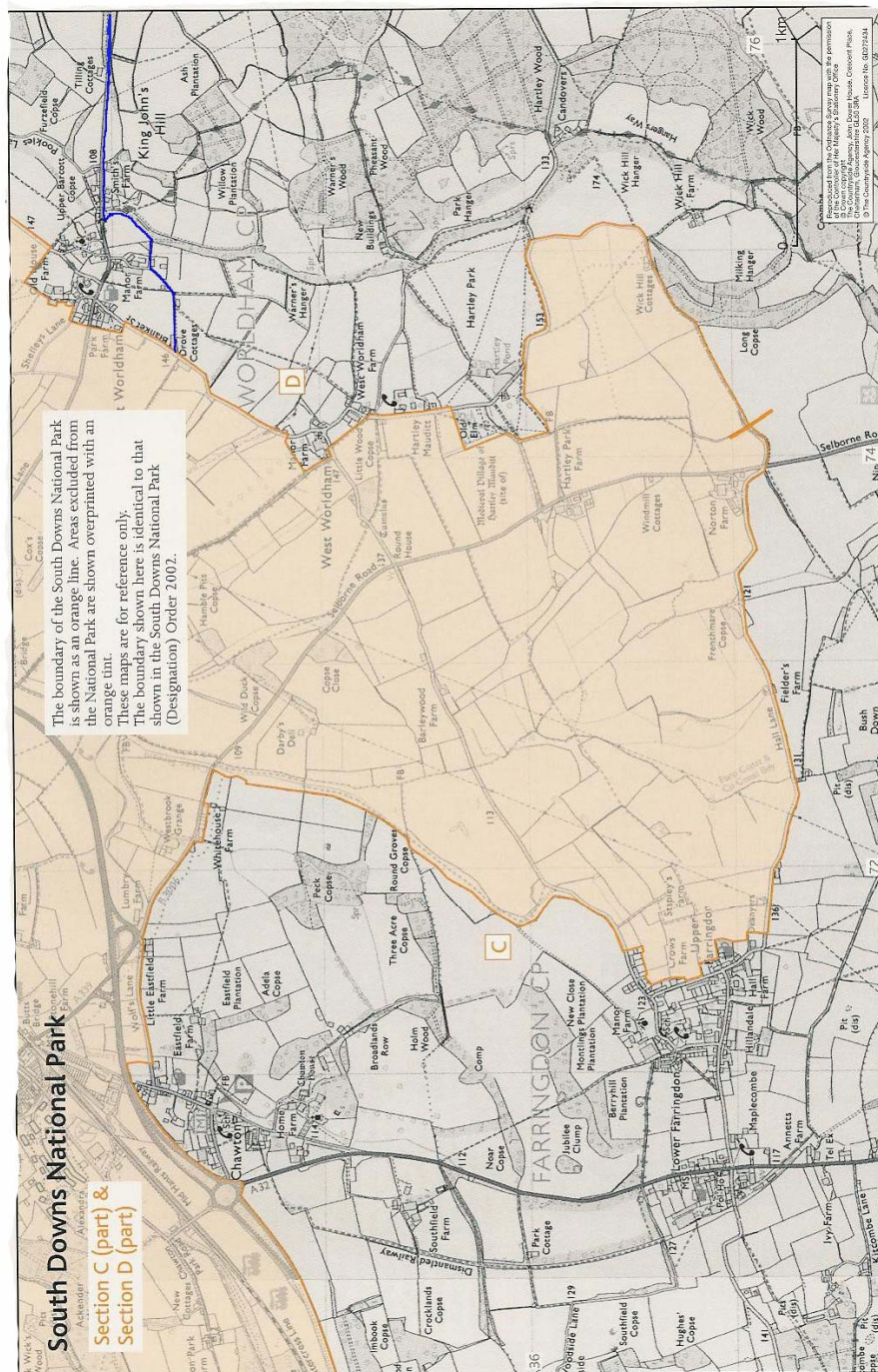
That the Boundary line of the King's Way includes the north west path.



Comments on Map 7

That the Boundary line should follow along the strip of woodland west of Smith's Farm.

Map 7

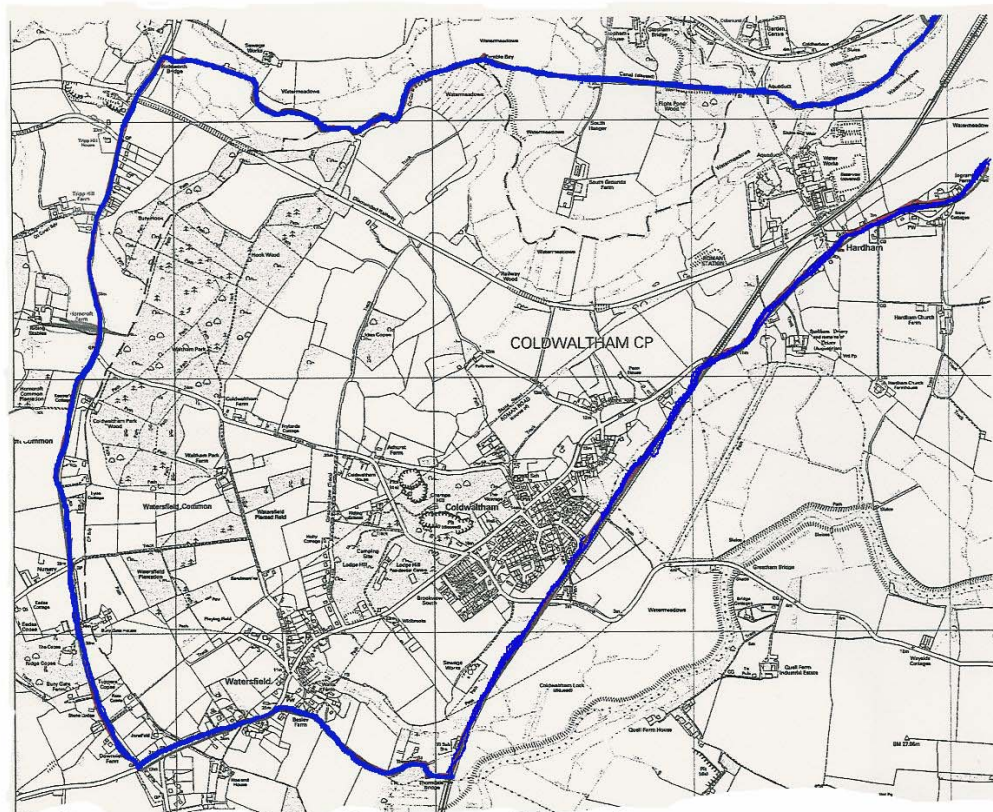


Comments on Map 15A

The boundary line will generally follow the road not a fence line.

The waterway north east of Stopham is included.

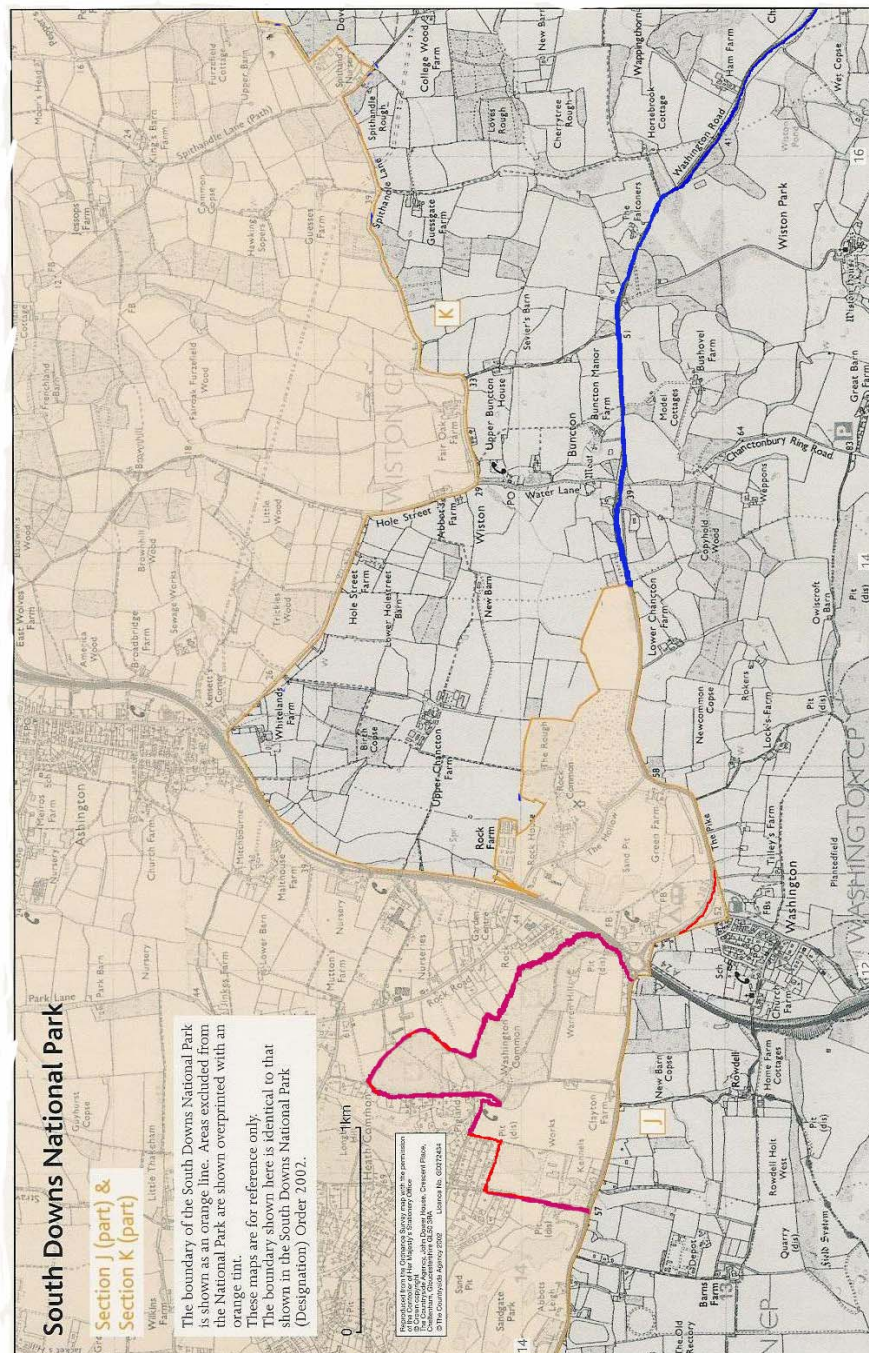
Map 15 A



**See Plan 1A & 1B for
recommended boundary
change. Changes shown on
this map are in the event
that the recommended
boundary in Plan 1A/B is
not accepted.**

The boundary line north of Washington follows the southern edge of the Road.

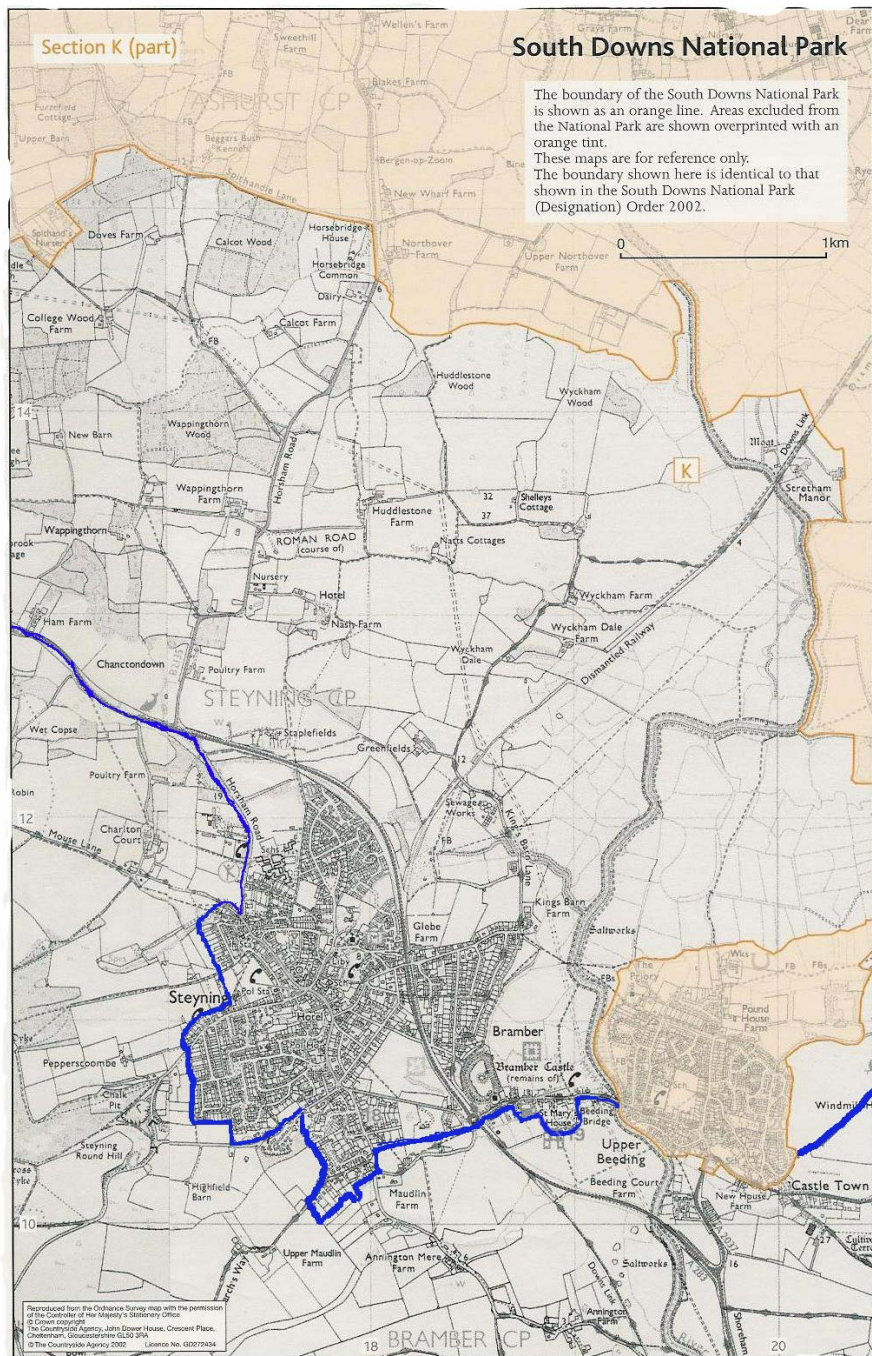
Map 17



Comments on Map 18

The Boundary line should follow the southern edge of the road at Beeding Bridge.

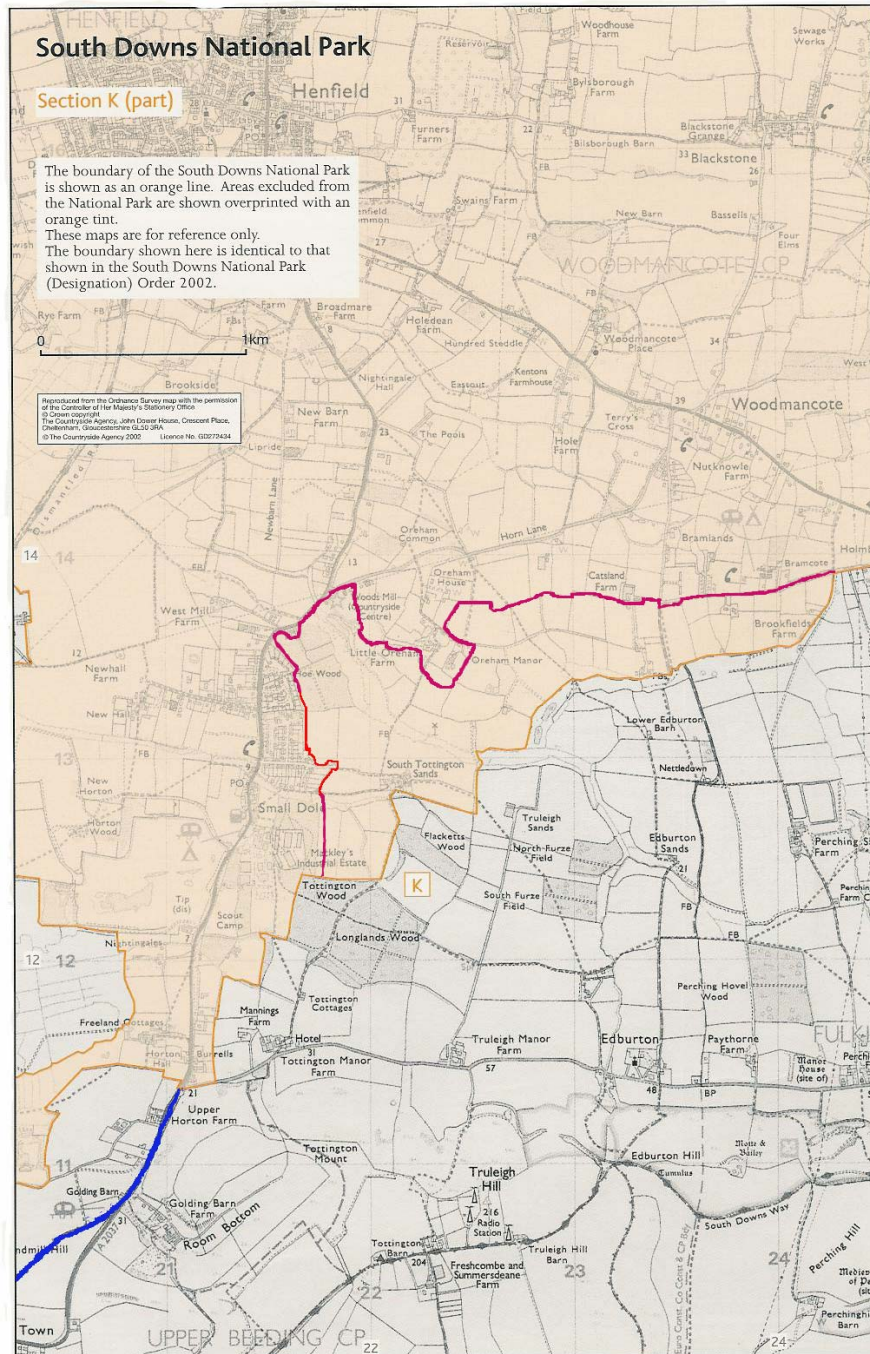
Map 18



Comments on Map 19

More definition given to the Boundary line north of Small Dole.

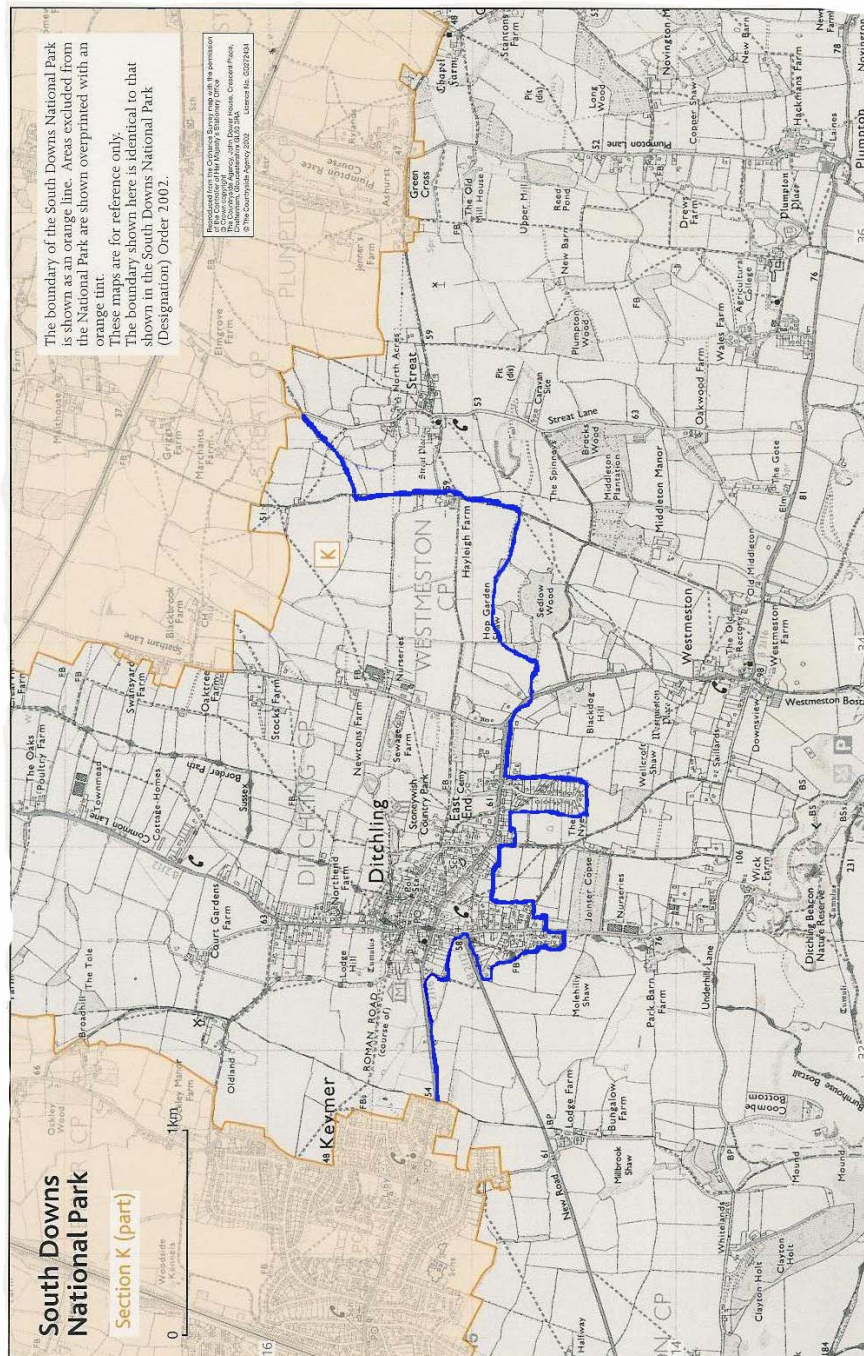
Map 19



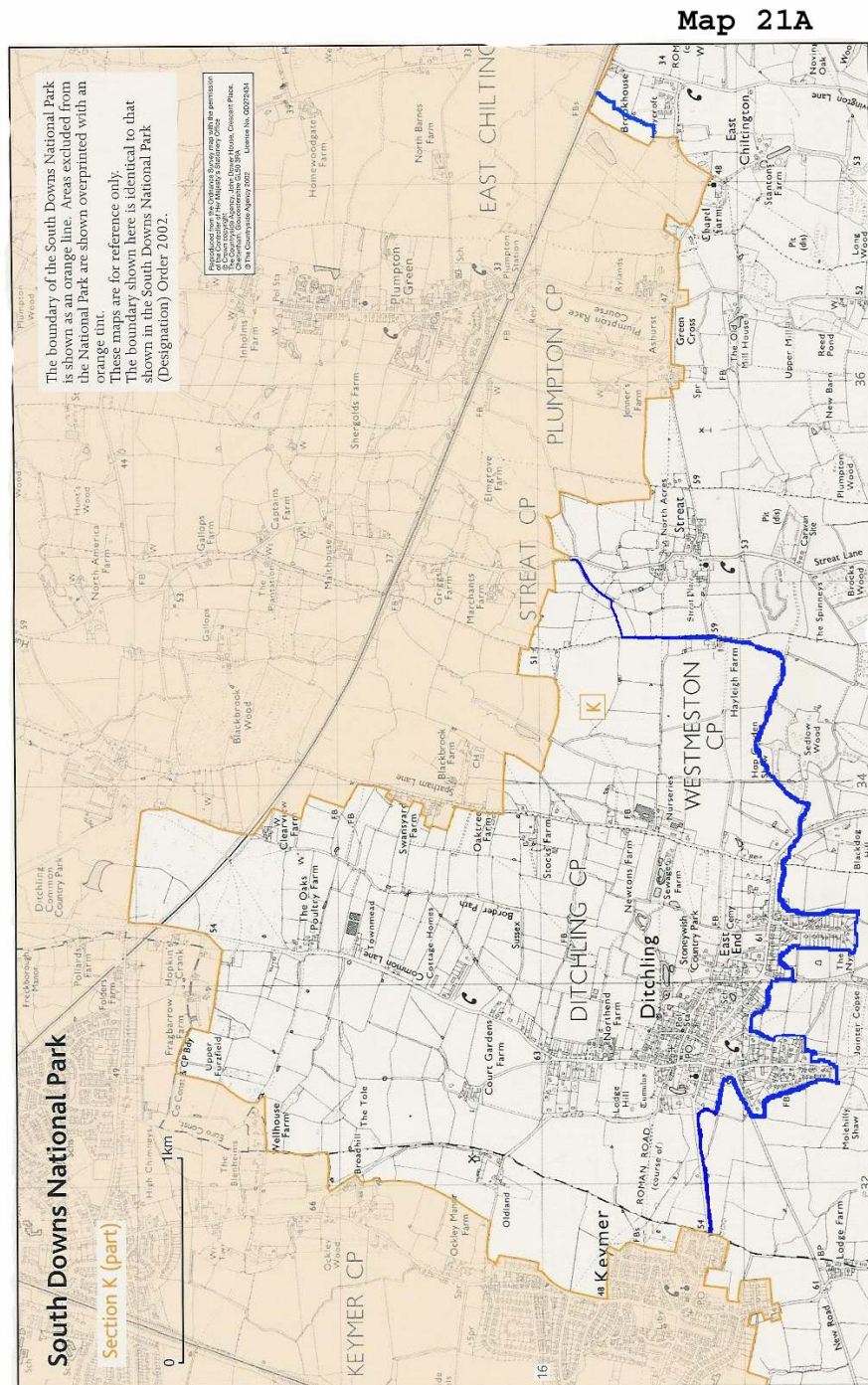
Comments on Map 21

Clarification to sections of map at the turn of the exclusion line south of Lodge Hill.

Map 21



Correction of the line on map 21A at the turn point North West of Street.



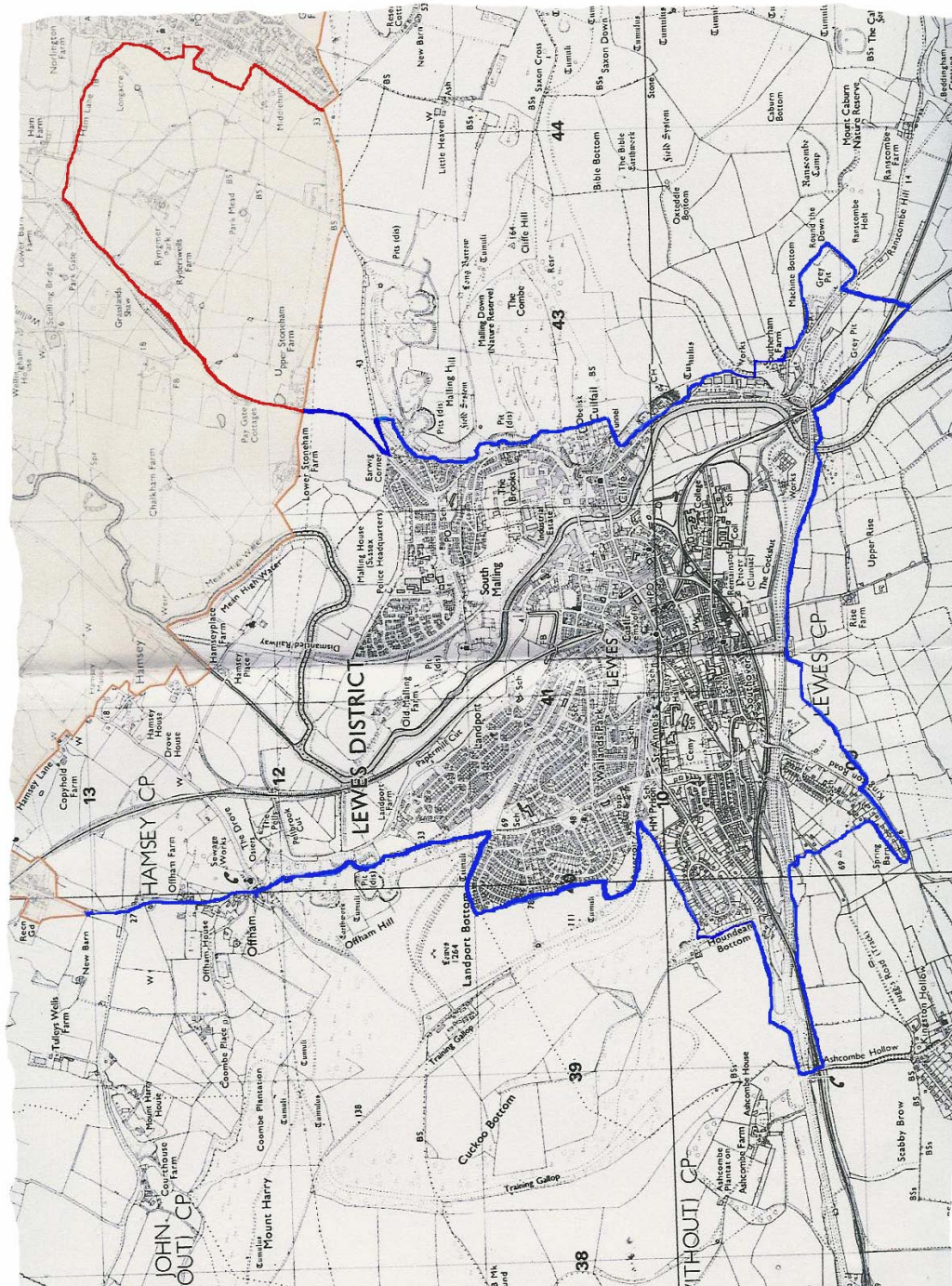
Comments on Map 22A

Clarification of boundary line around Southerham Farm

Clarification on boundary line around Houndean Bottom.

Colour correction to boundary line between Upper Stone Farm and Mailing Hall. This should be blue to reflect exclusion.

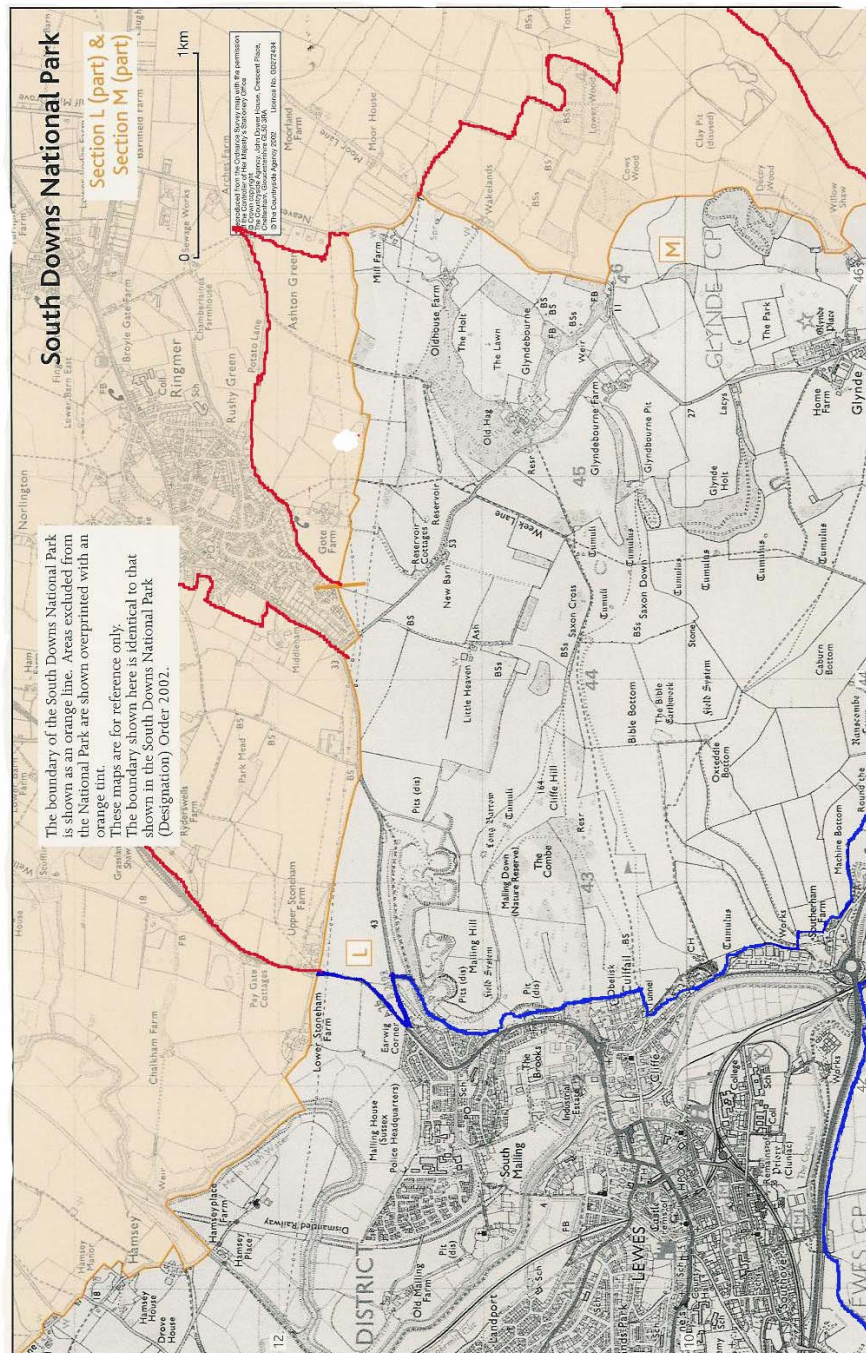
Map 22A



Comments on Map 23

Colour correction to boundary line between Upper Stone Farm and Mailing Hall. This should be blue to reflect exclusion.

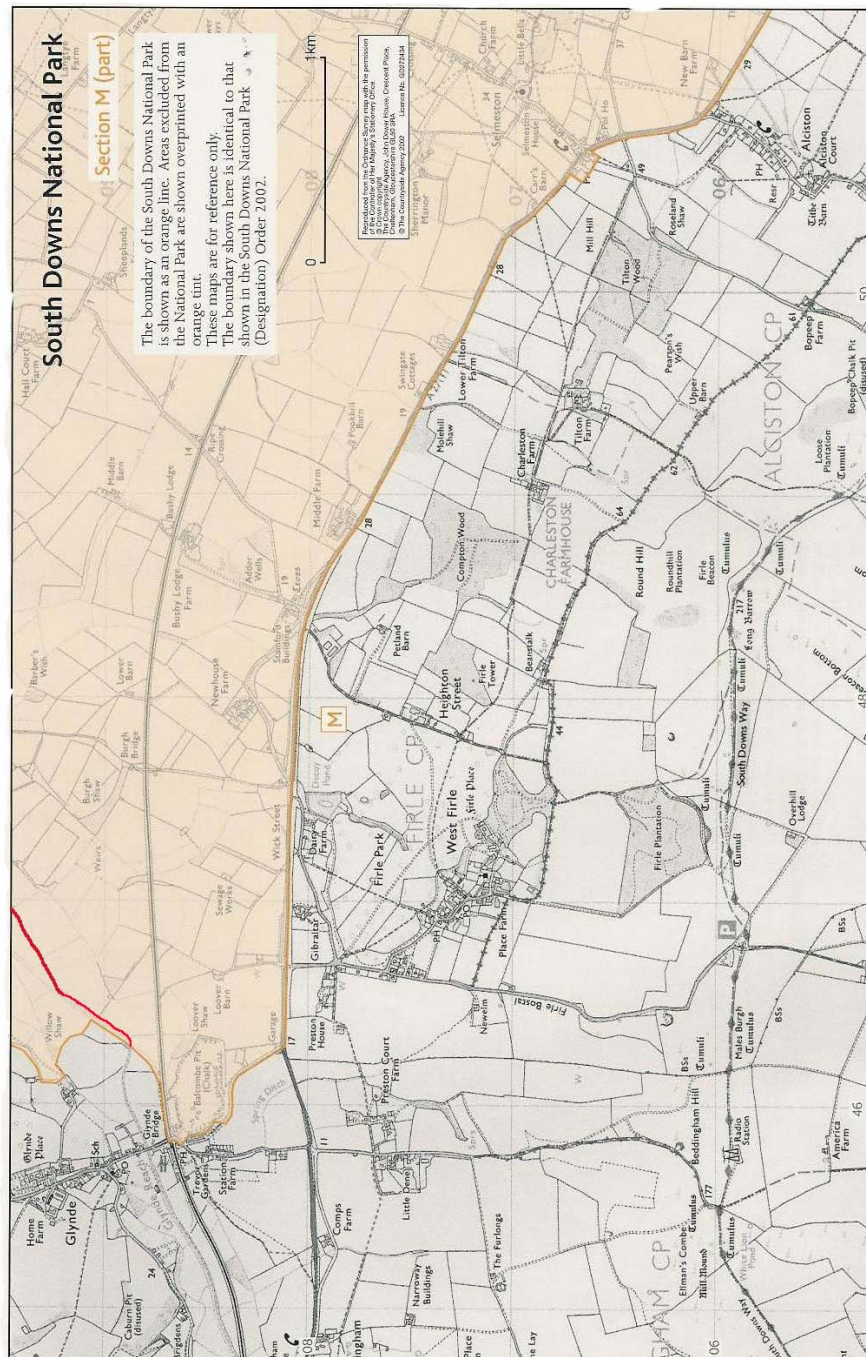
Map 23



Comments on Map 24/24A

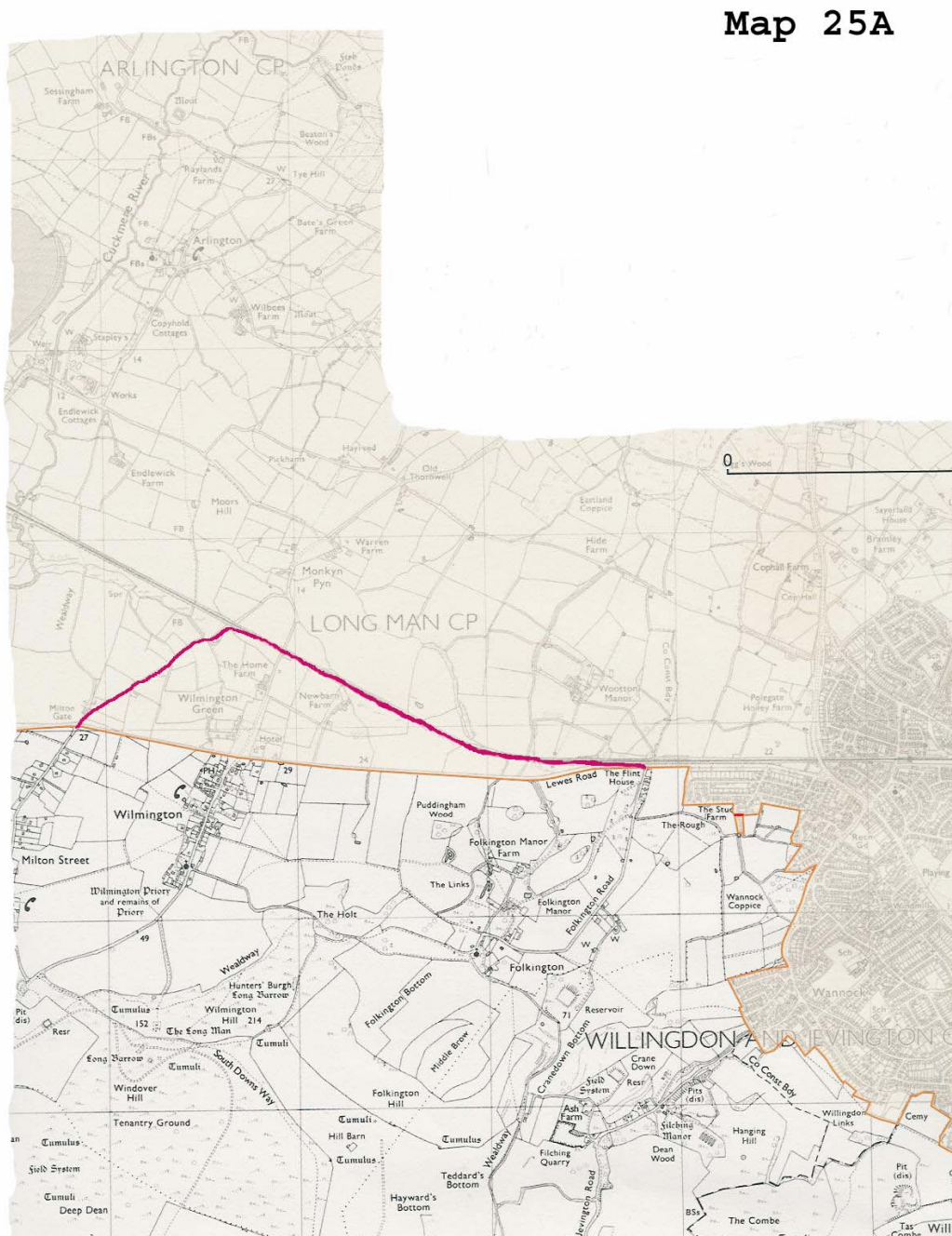
Boundary line amended to follow and include Glyne Reach.

Map 24



Comments on Map 25A

Red line omitted on report map 25A south east of The Stud Farm.

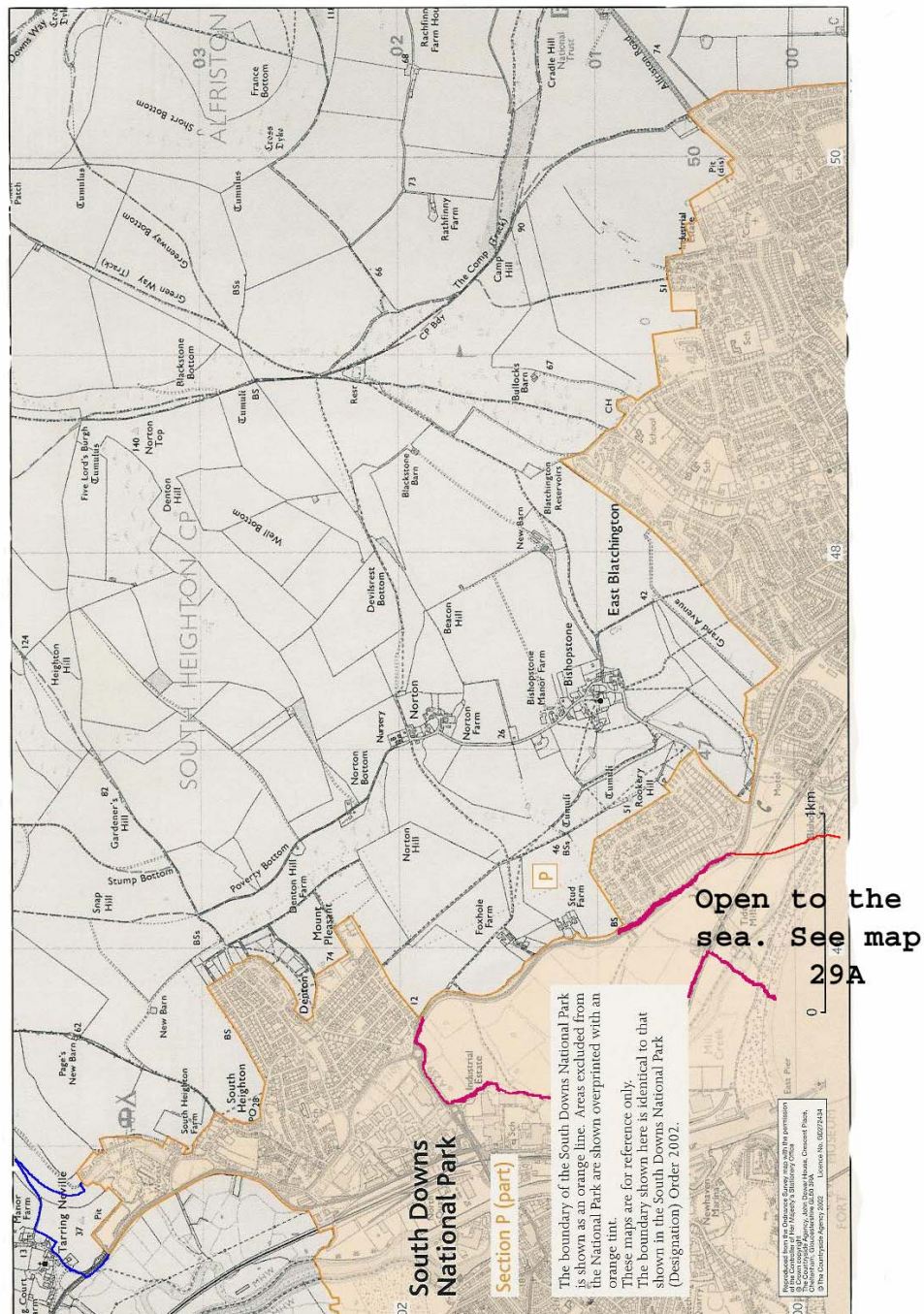


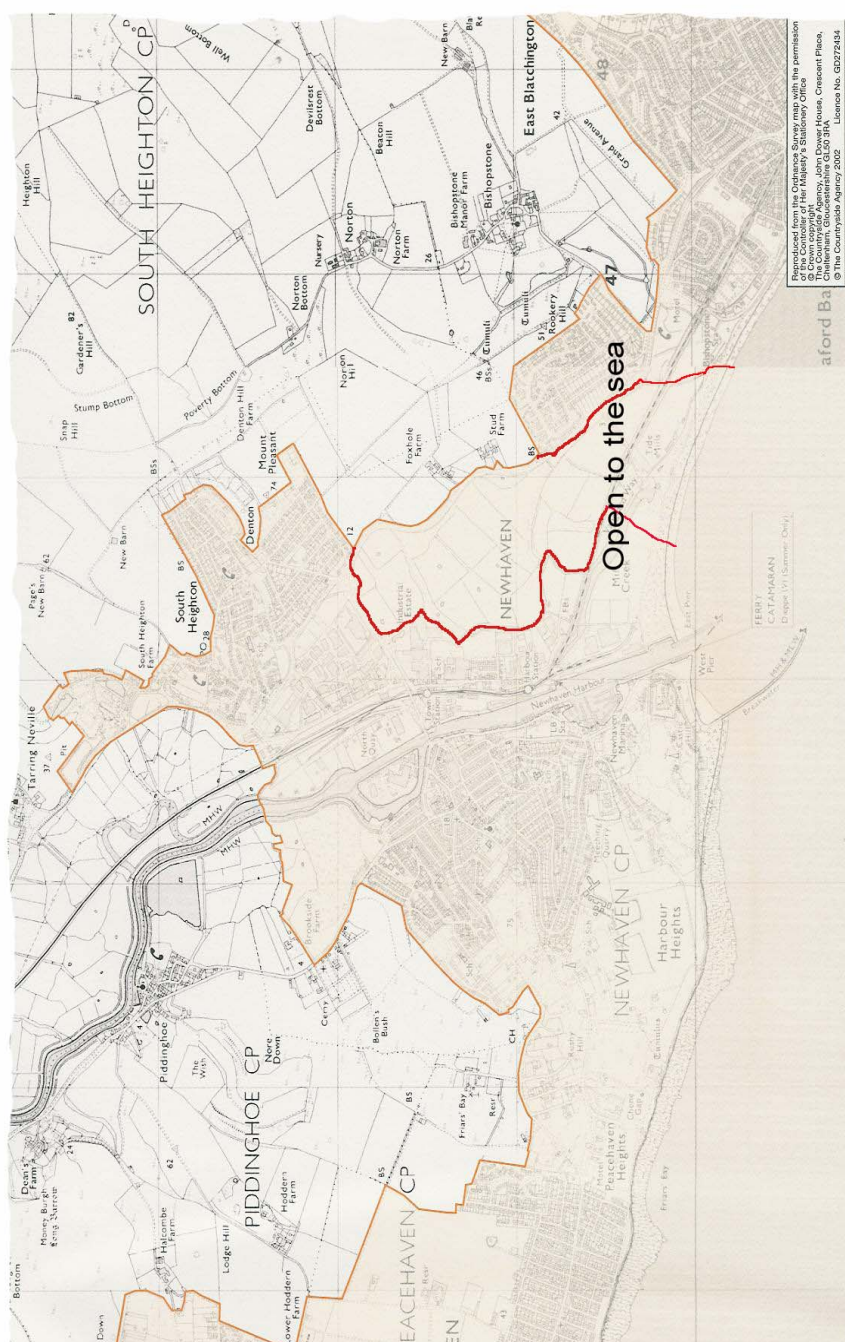
Comments on Map 29/29A

Clarification of boundary line at Tarring Neville

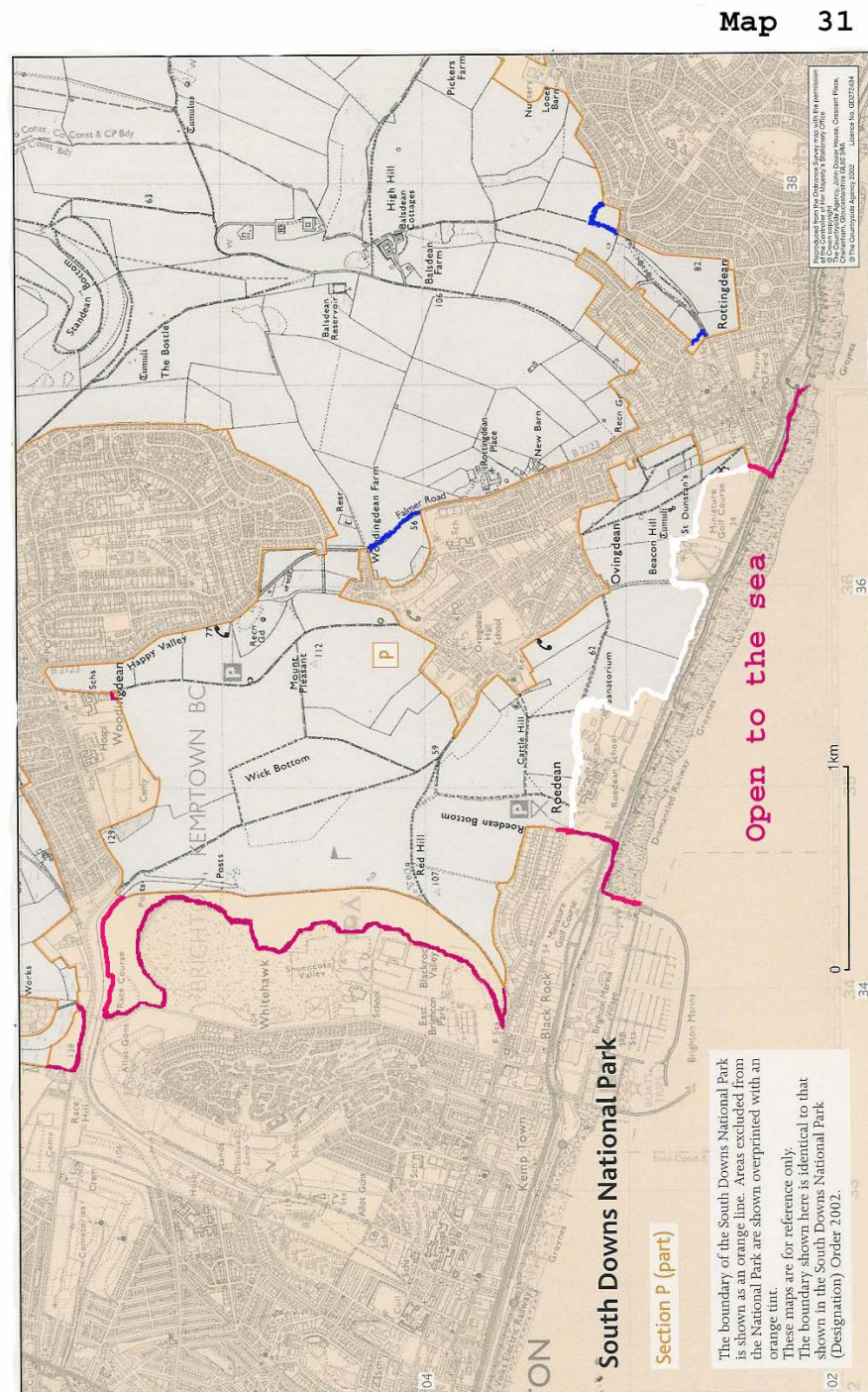
Boundary at Tide Mills extended to the sea.

Map 29





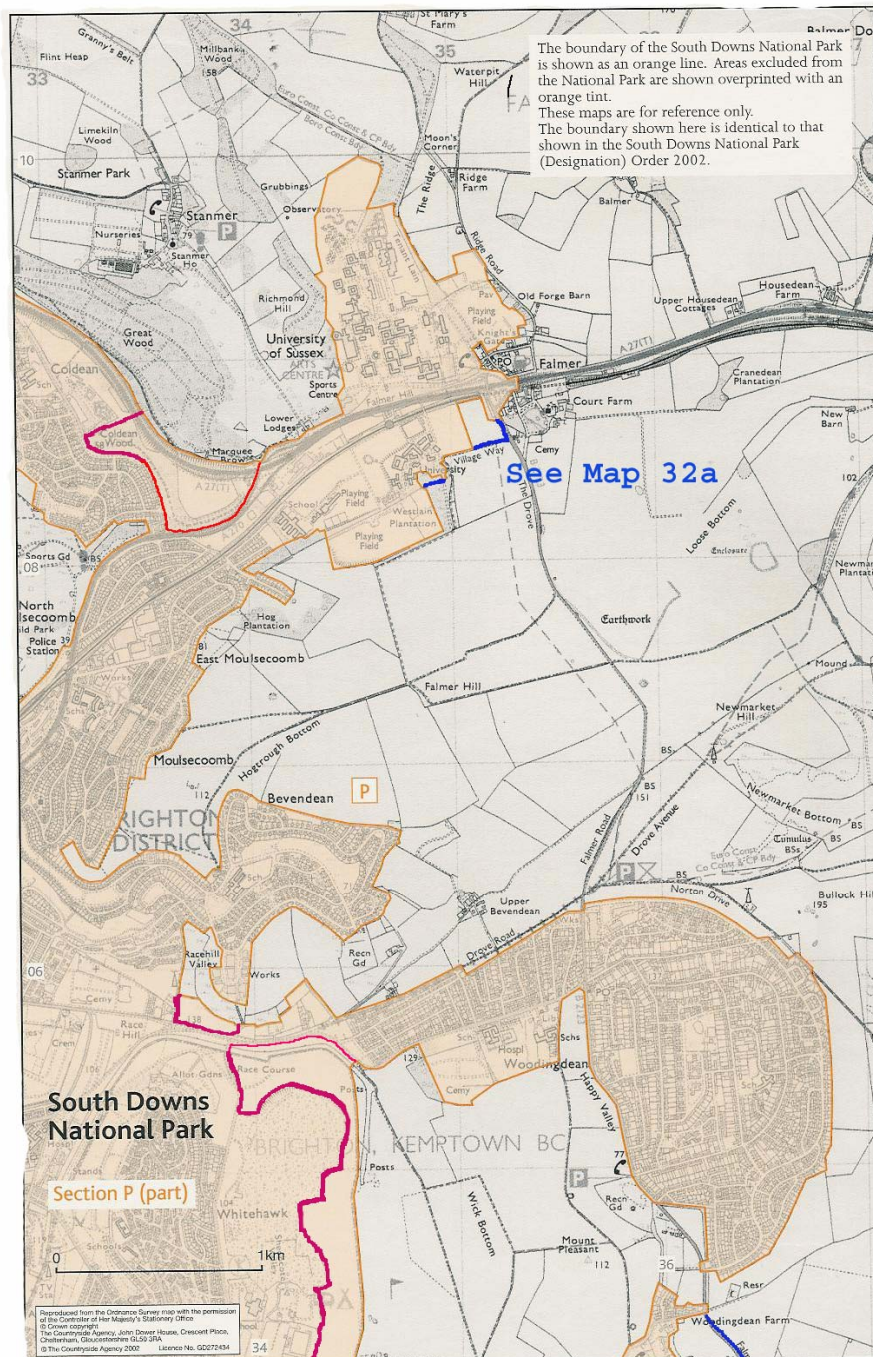
Red boundary line across sea front removed to demonstrate openness to the sea.



Comments on Map 32

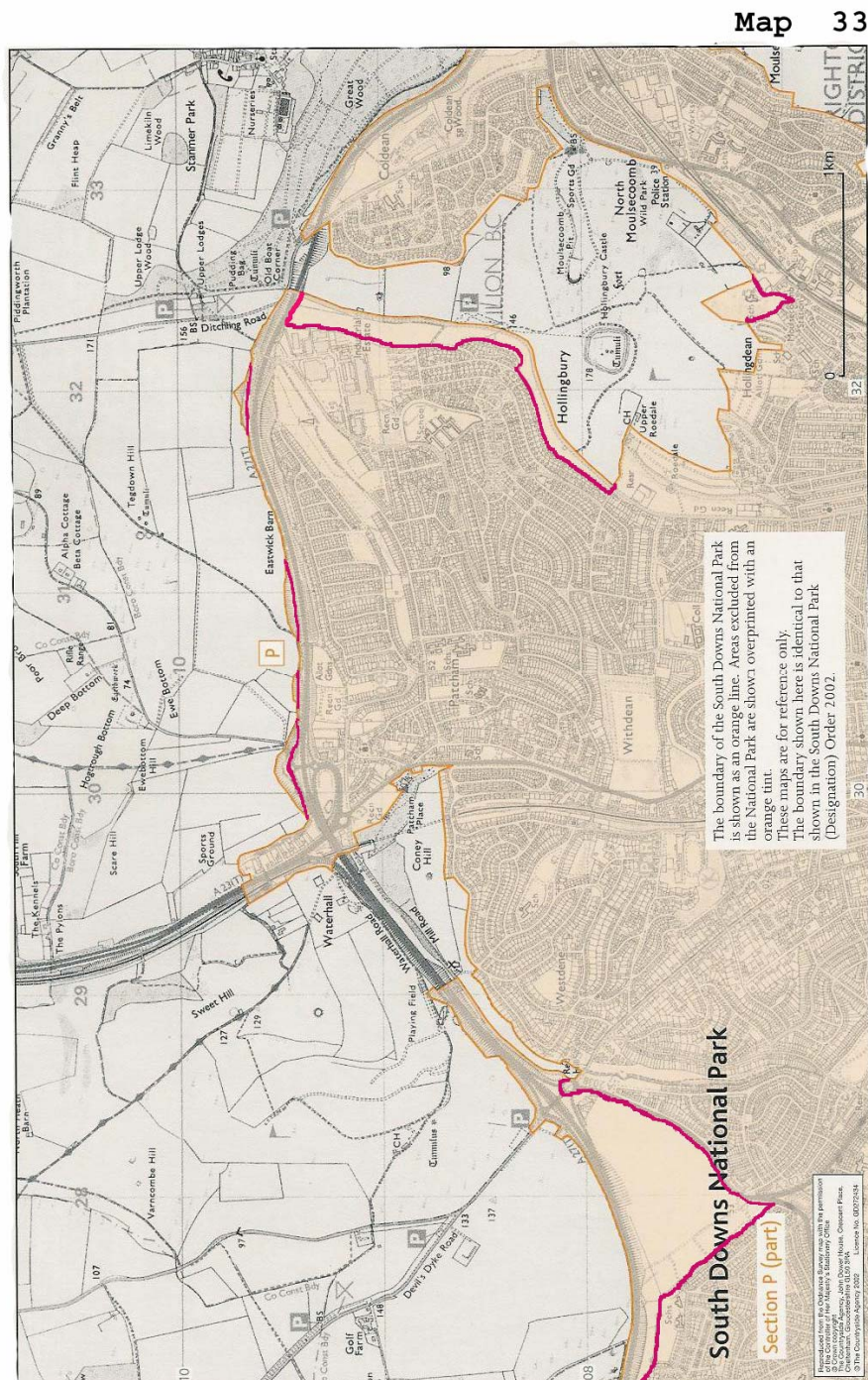
Clarification that boundary line runs along the north side of the A270.

Map 32



Comments on Map 33

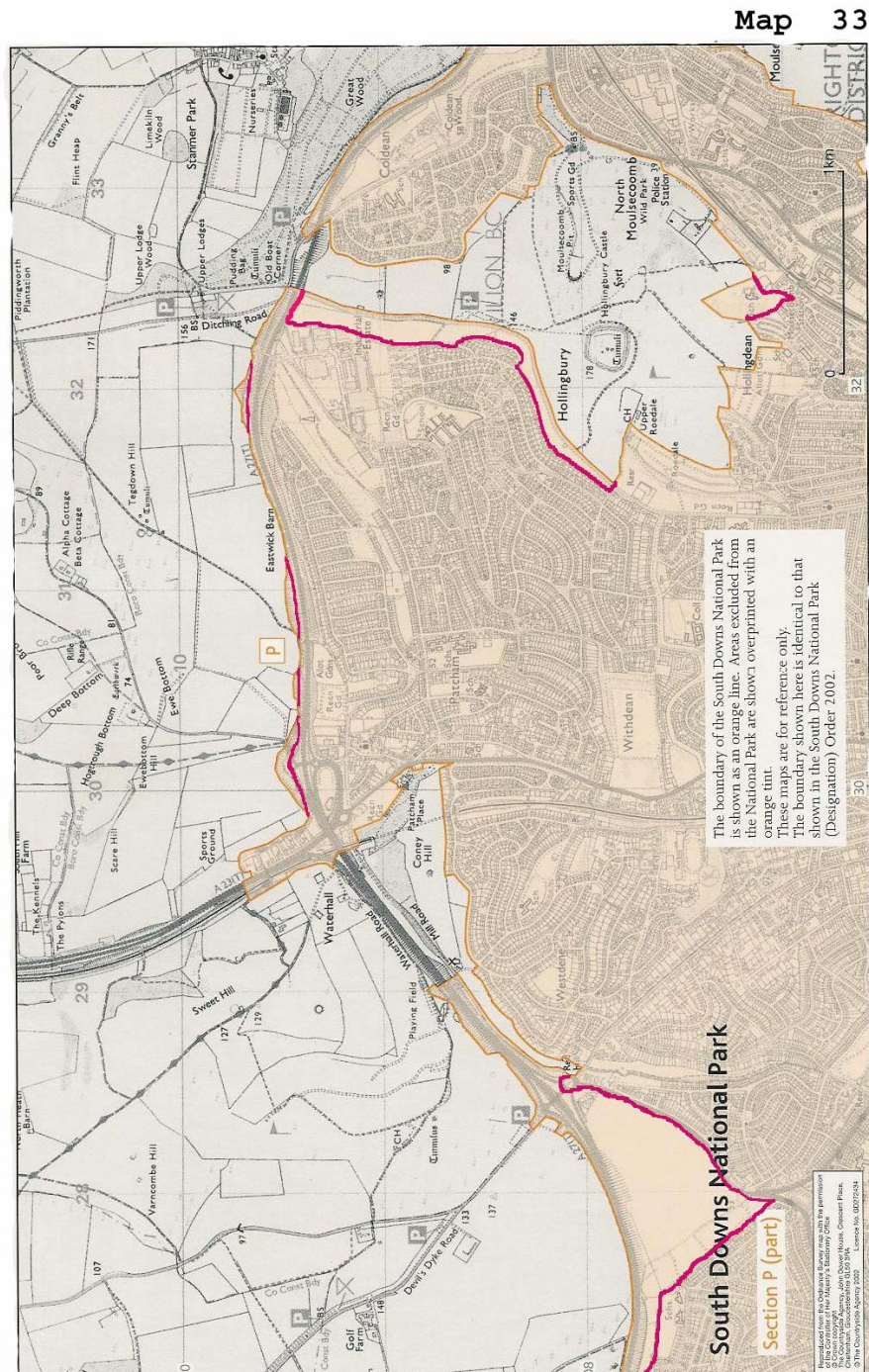
Red boundary line carried south east along embankment of A27 (S) to complete the boundary.



Comments on Map 34

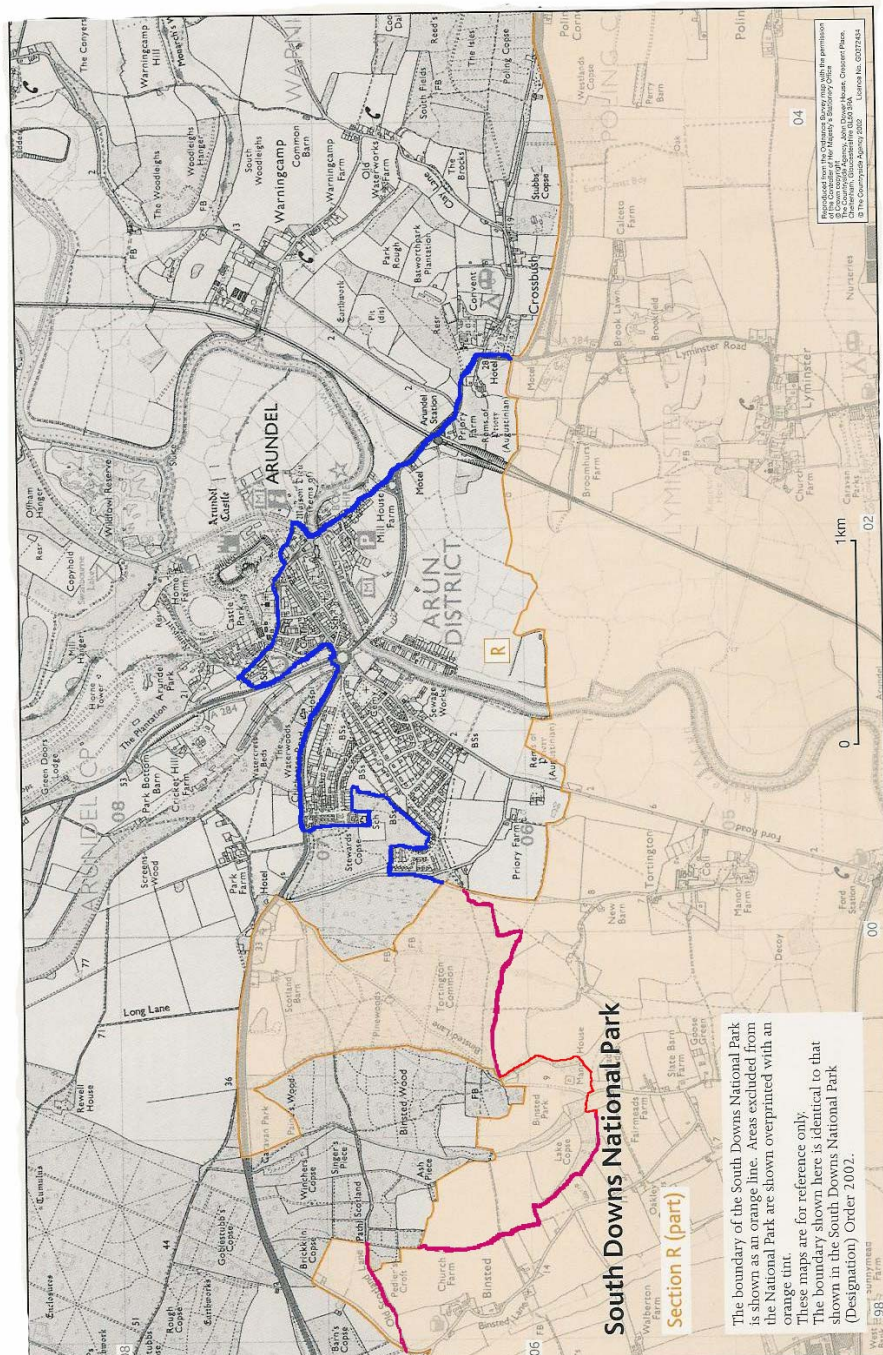
Boundary line completed at Foredown Road.

Clarification that embankments are included to reflect conclusions in paragraph 7.453 and boundary should follow northern edge of carriageway.



Boundary line to follow the edge of the woodland at Binsted Park.

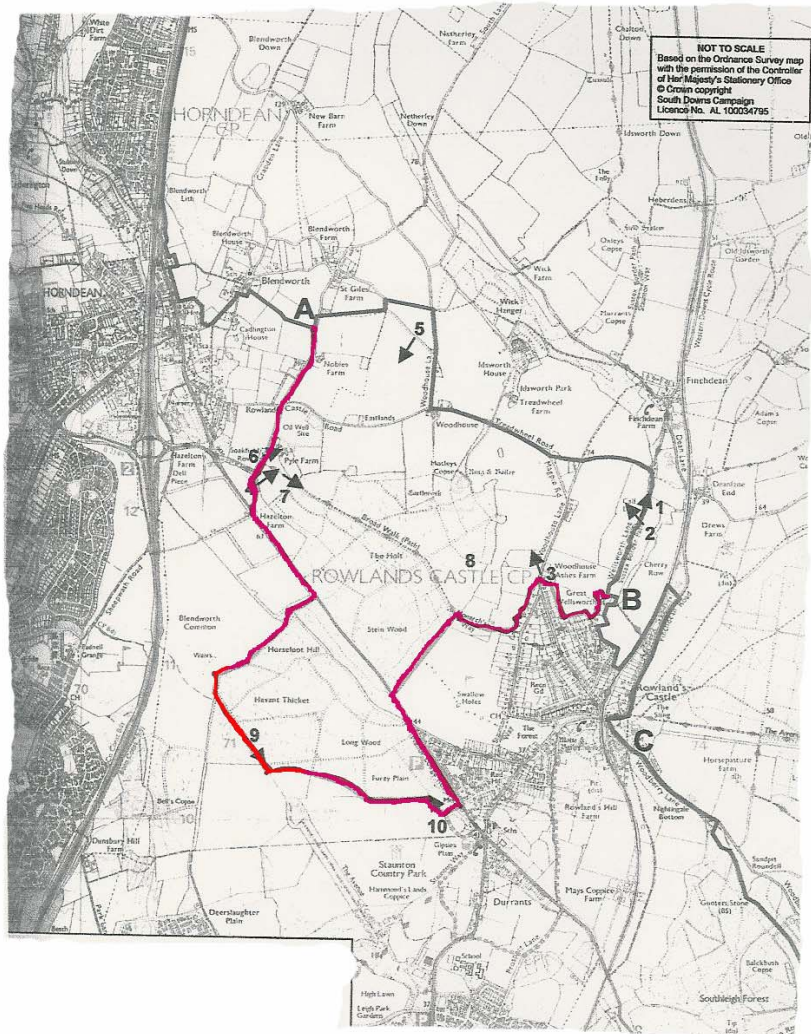
Map 38



Comments on Map 43A

Clarification that the boundary line should preferentially follows a track.

Map 43A



Comments on Map 48

Clarification that small exclusion east of Northbrook is due to new property development.

