



Report to the Secretary of State for Environment, Food and Rural Affairs

by Robert Neil Parry BA DIPTP MRTPI

**An Inspector appointed by the Secretary of State for Environment,
Food and Rural Affairs**

The Planning
Inspectorate
Temple Quay House
2 The Square
Temple Quay
Bristol BS1 6PN
☎ GTN 1371 8000

Date:
28 November 2008

THE SOUTH DOWNS NATIONAL PARK

INSPECTOR'S REPORT (2)

Volume 2

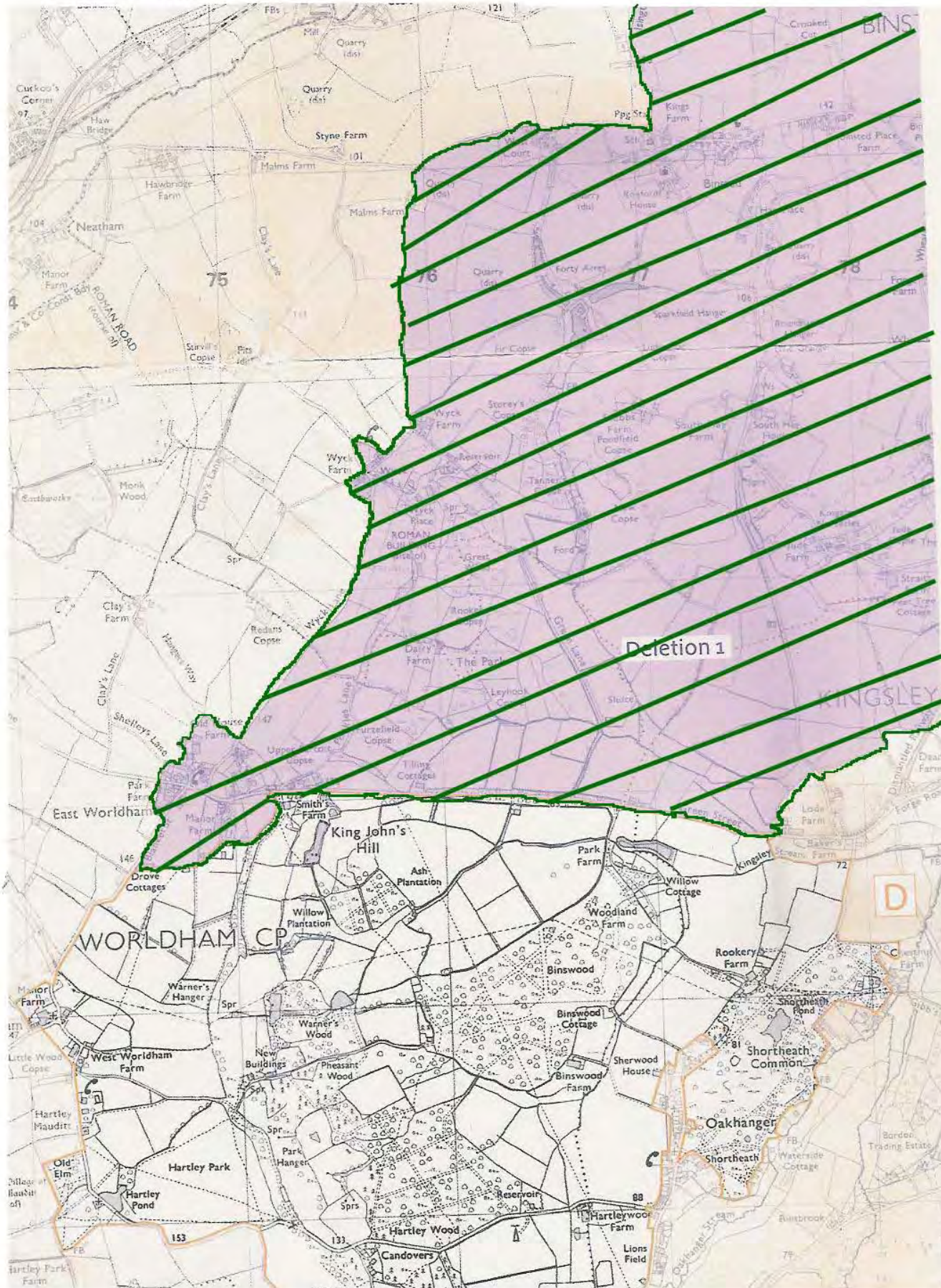
Maps

Inquiry (2) held between 12 February 2008 and 4 July 2008

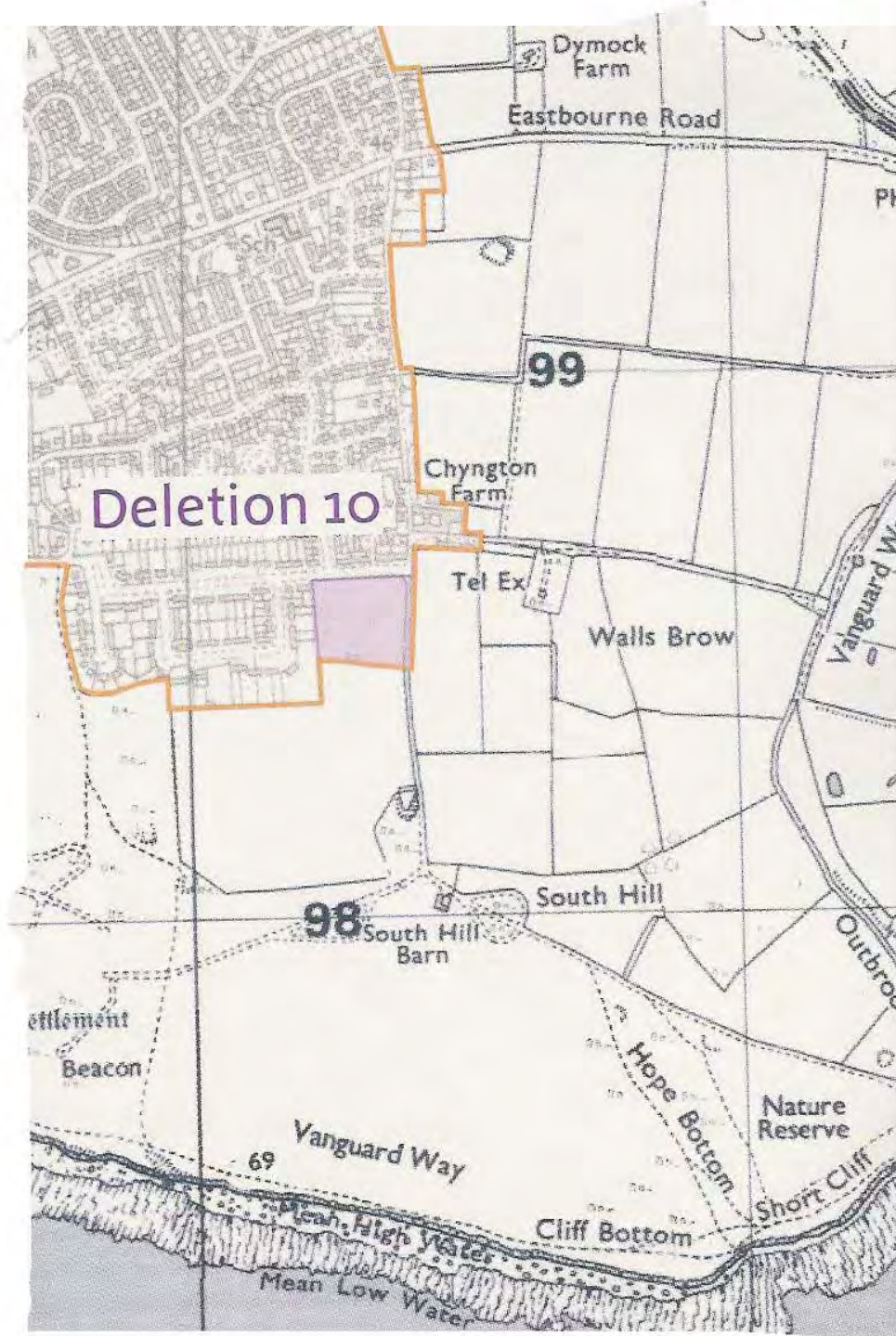
Inquiry held at The Chatsworth Hotel, Steyne, Worthing, BN11 3DU

Deletion 1

Deletion 1 now to be included in the PSDNP



Deletion 10



No change, to remain outside PSDNP

Deletion 11

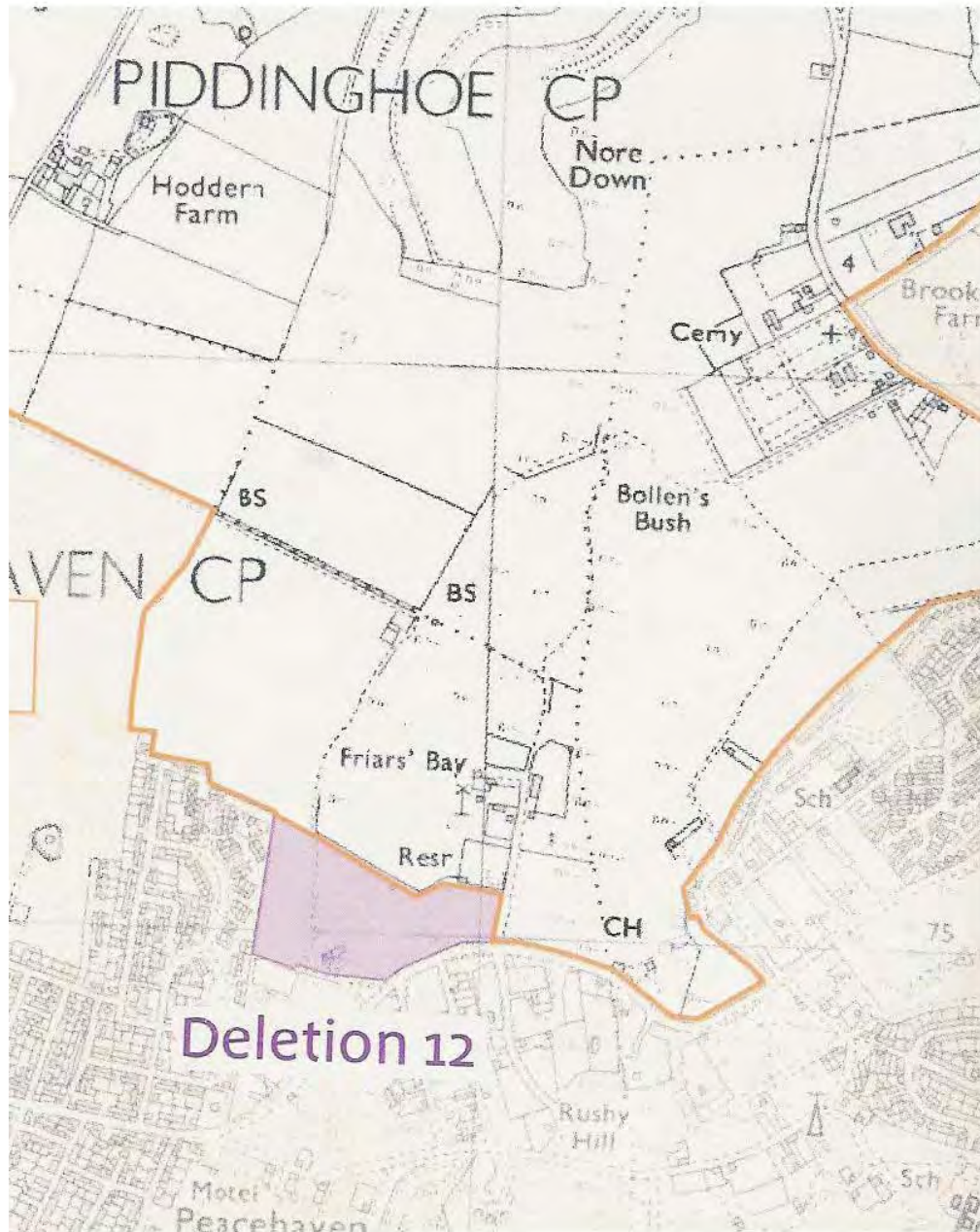


Deletion 11

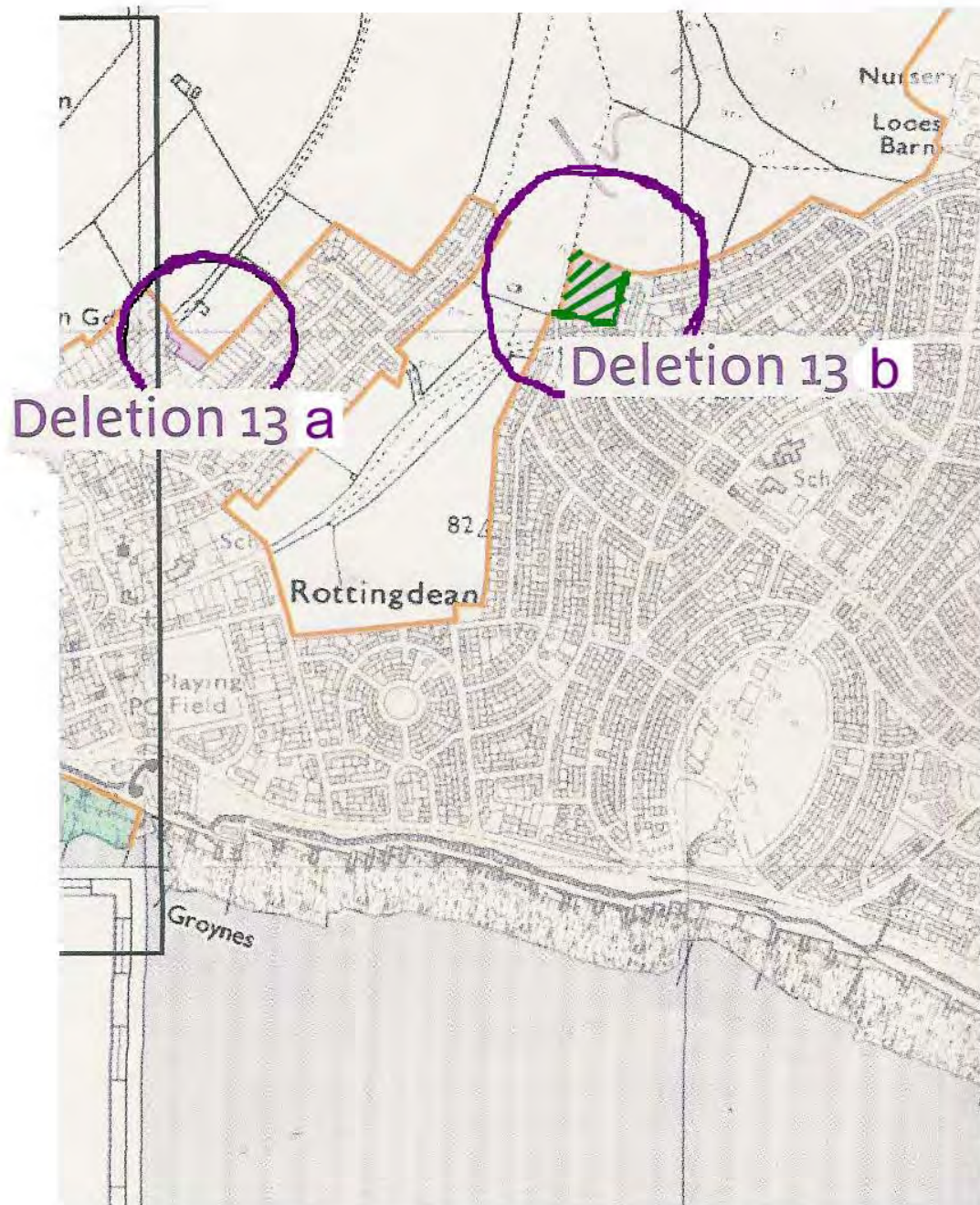
No change, to remain outside PSDNP

Deletion 12

No change to remain outside PSDNP

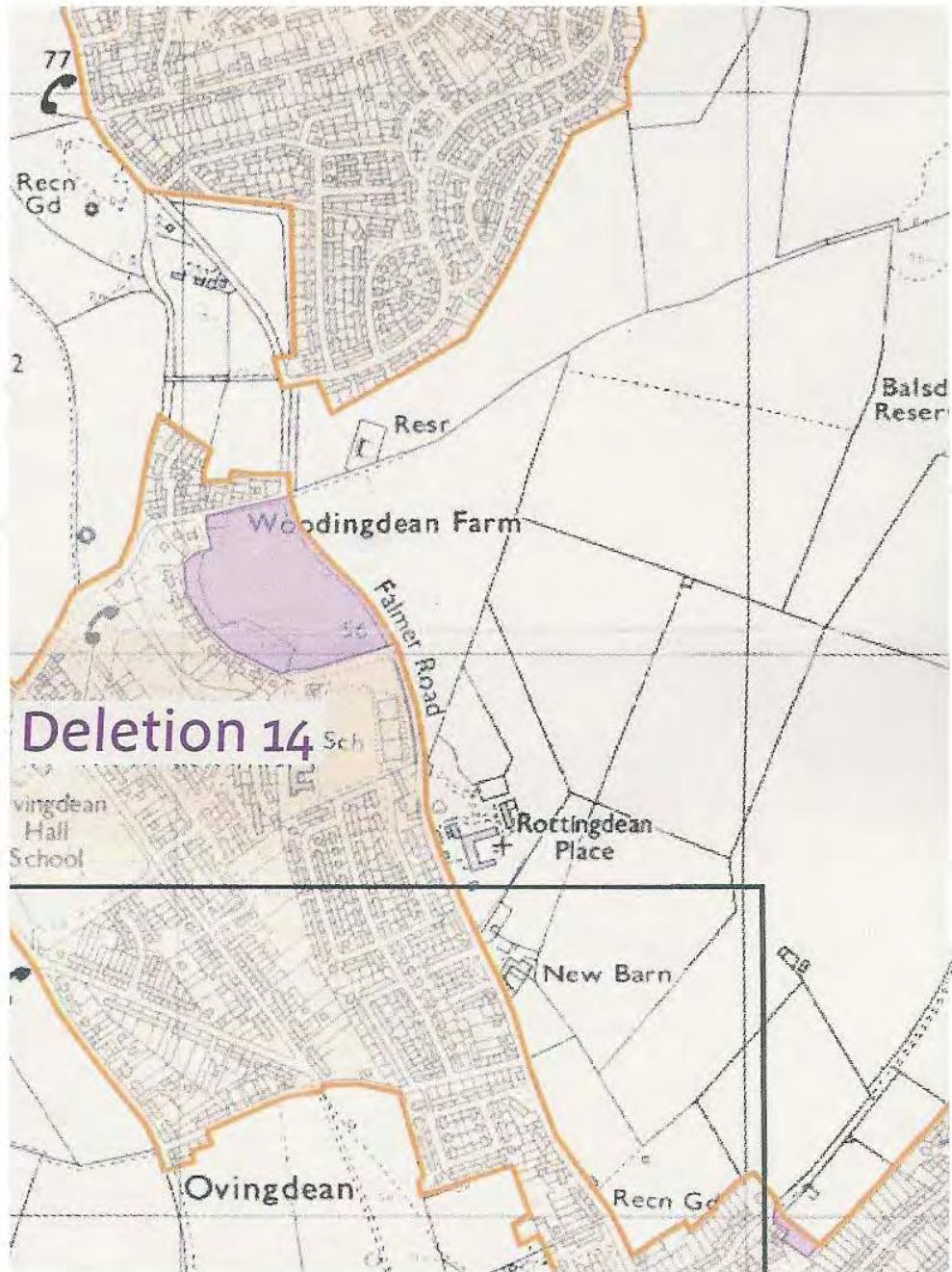


Deletion 13



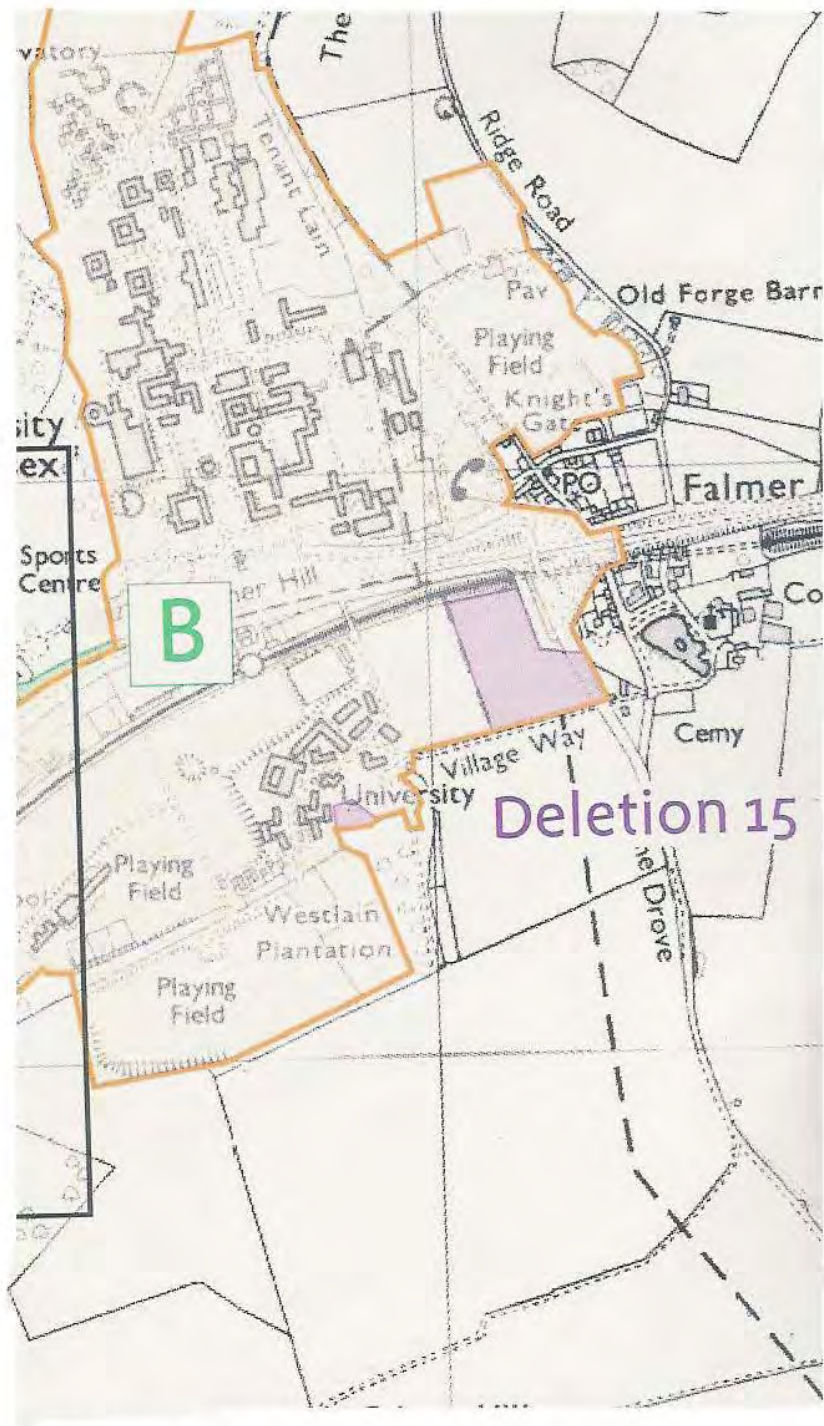
Deletion 13a to remain outside the PSDNP
Deletion 13b now to be included in the PSDNP

Deletion 14



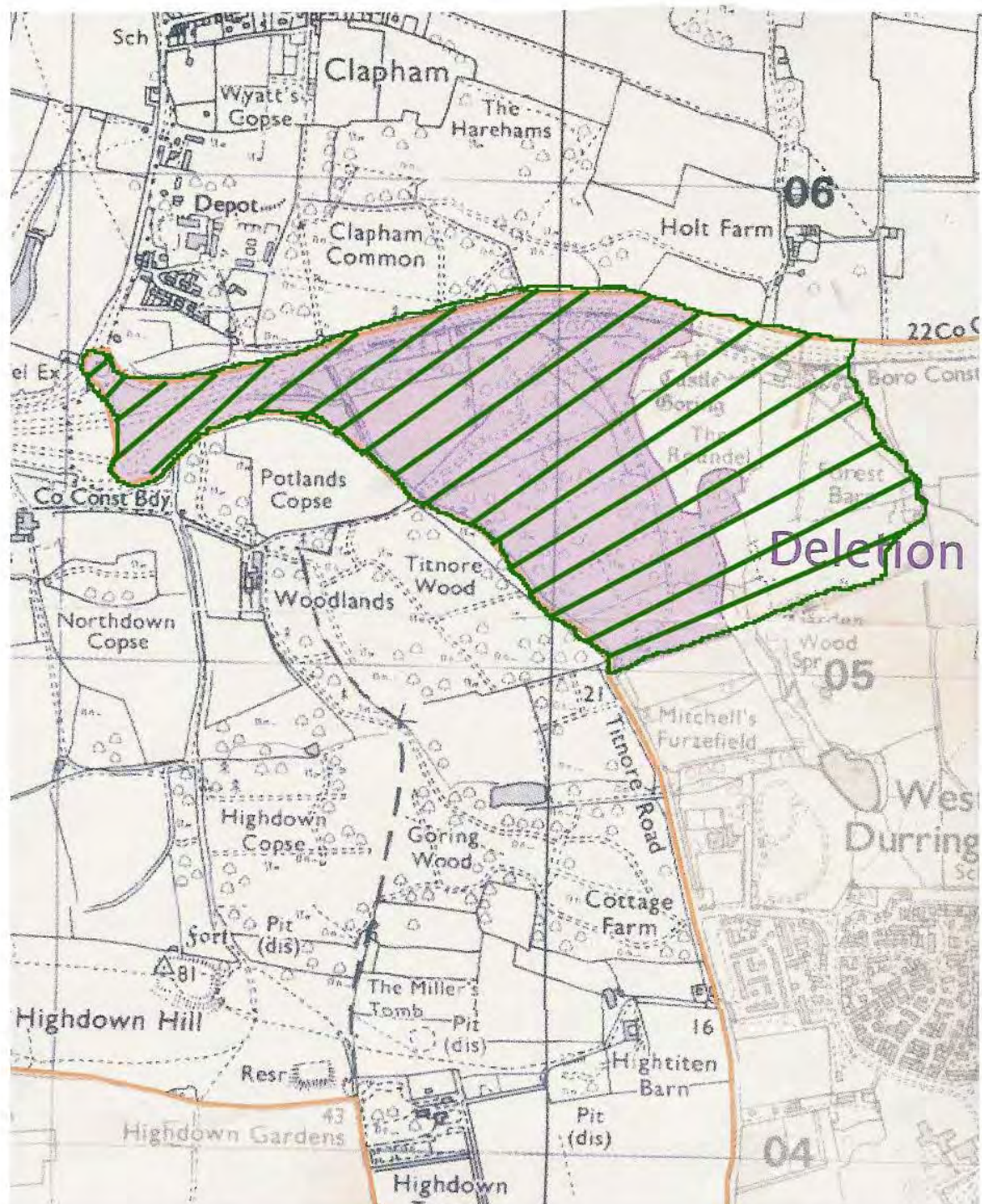
No change to remain outside PSDNP

Deletion 15



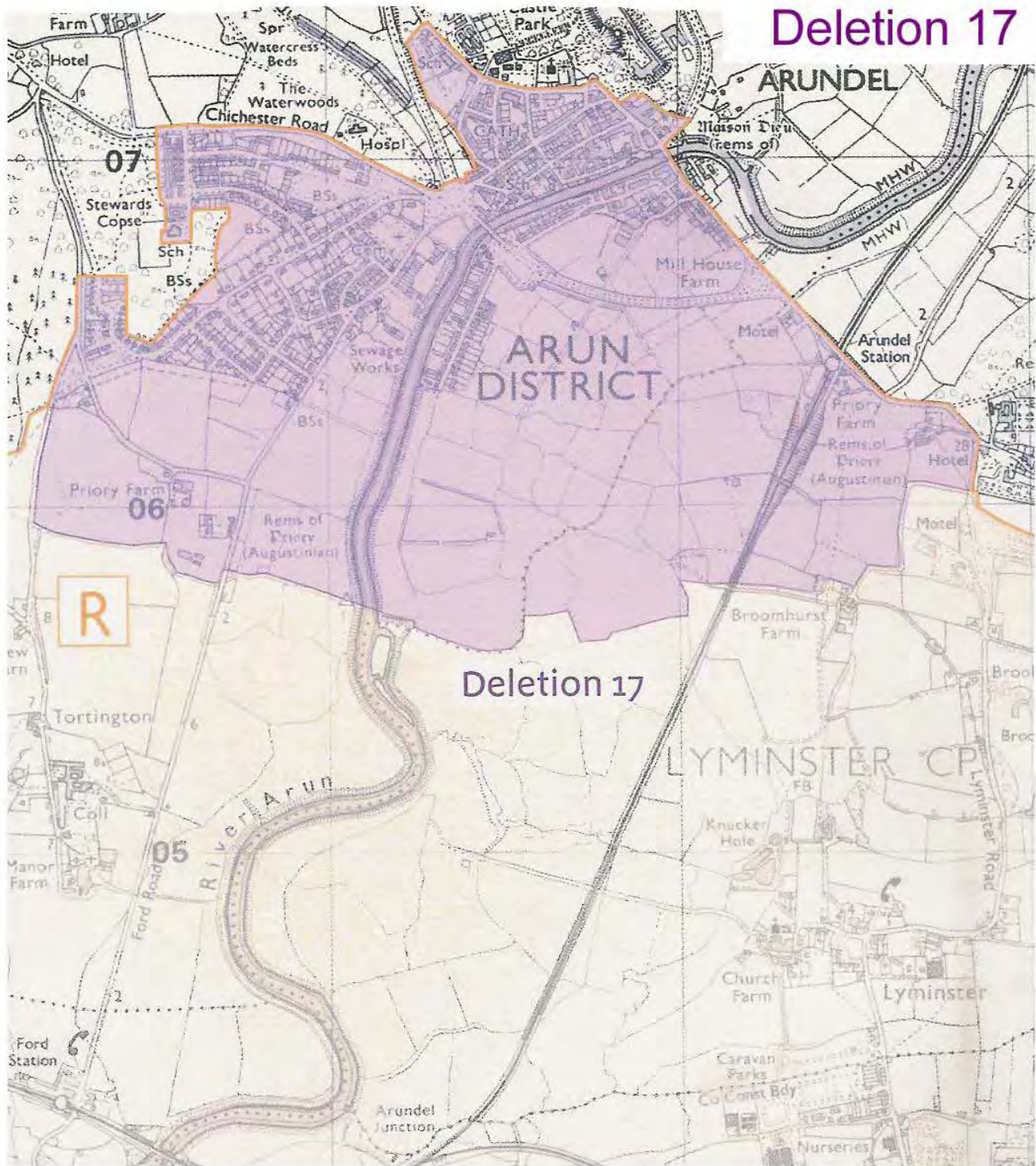
No change to remain outside PSDNP

Deletion 16



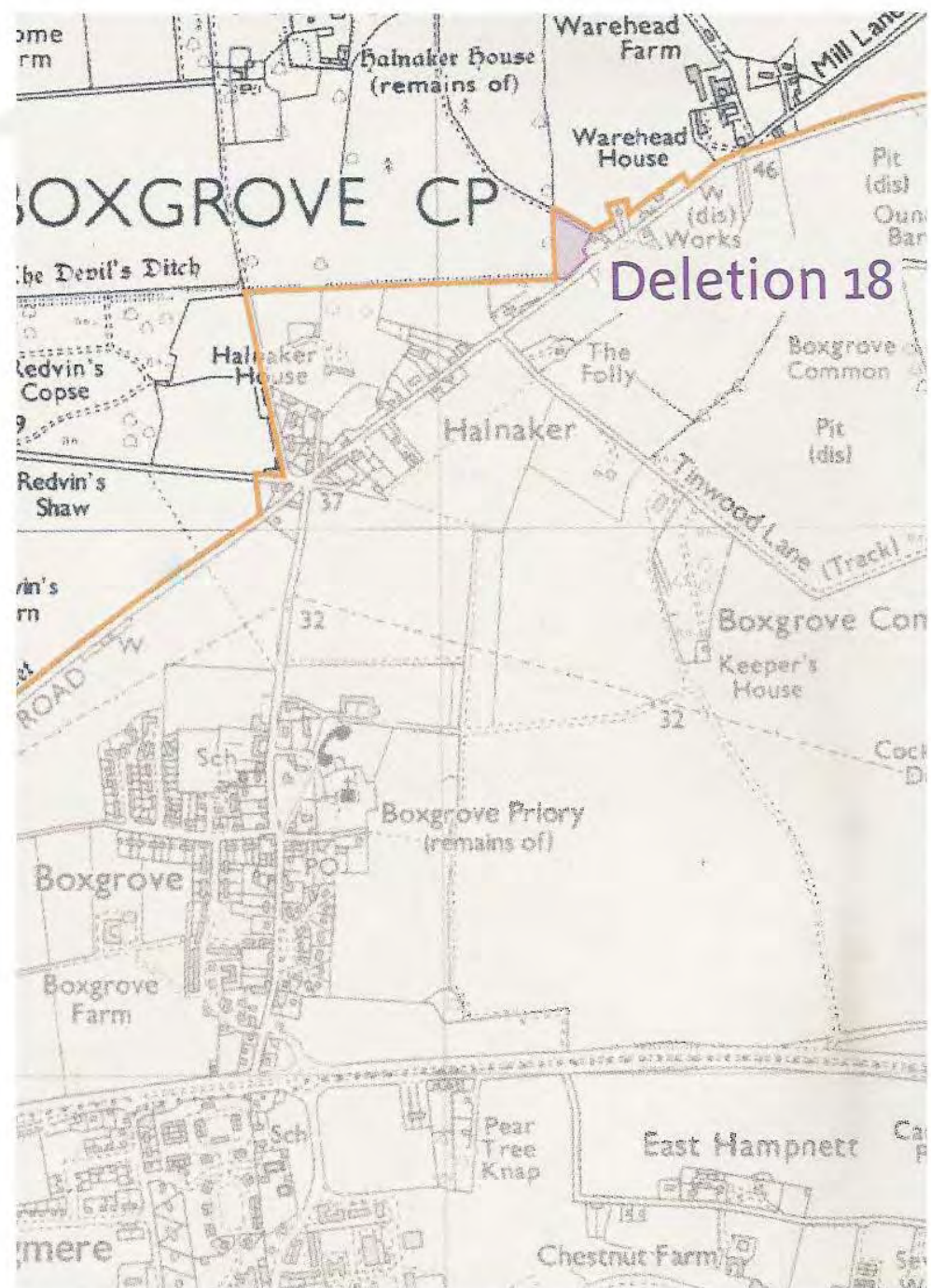
Deletion 16 now to be included in PSDNP with additional land to the east shown shaded green

Deletion 17



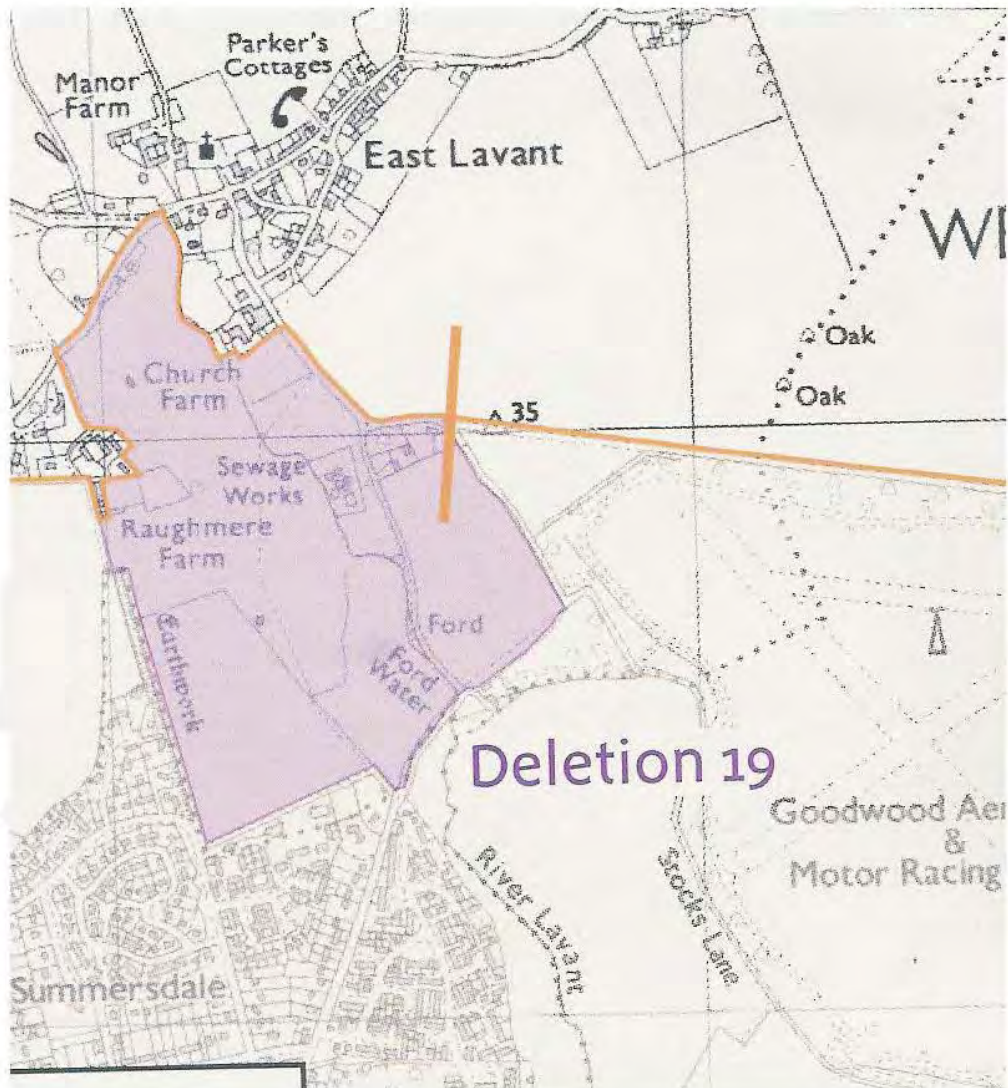
No change, to remain outside PSDNP

Deletion 18



No change to remain outside PSDNP

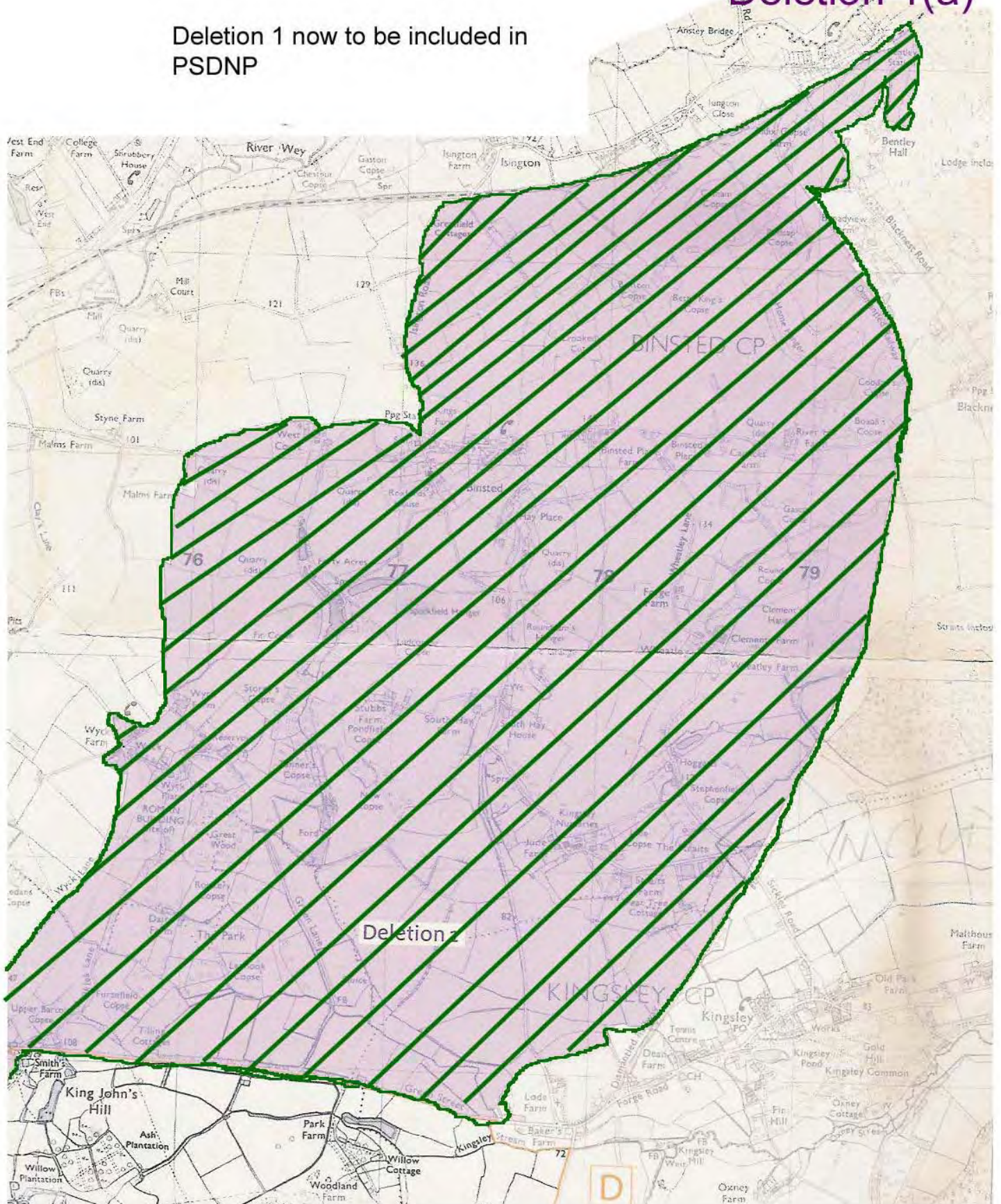
Deletion 19



No change, to remain outside PSDNP

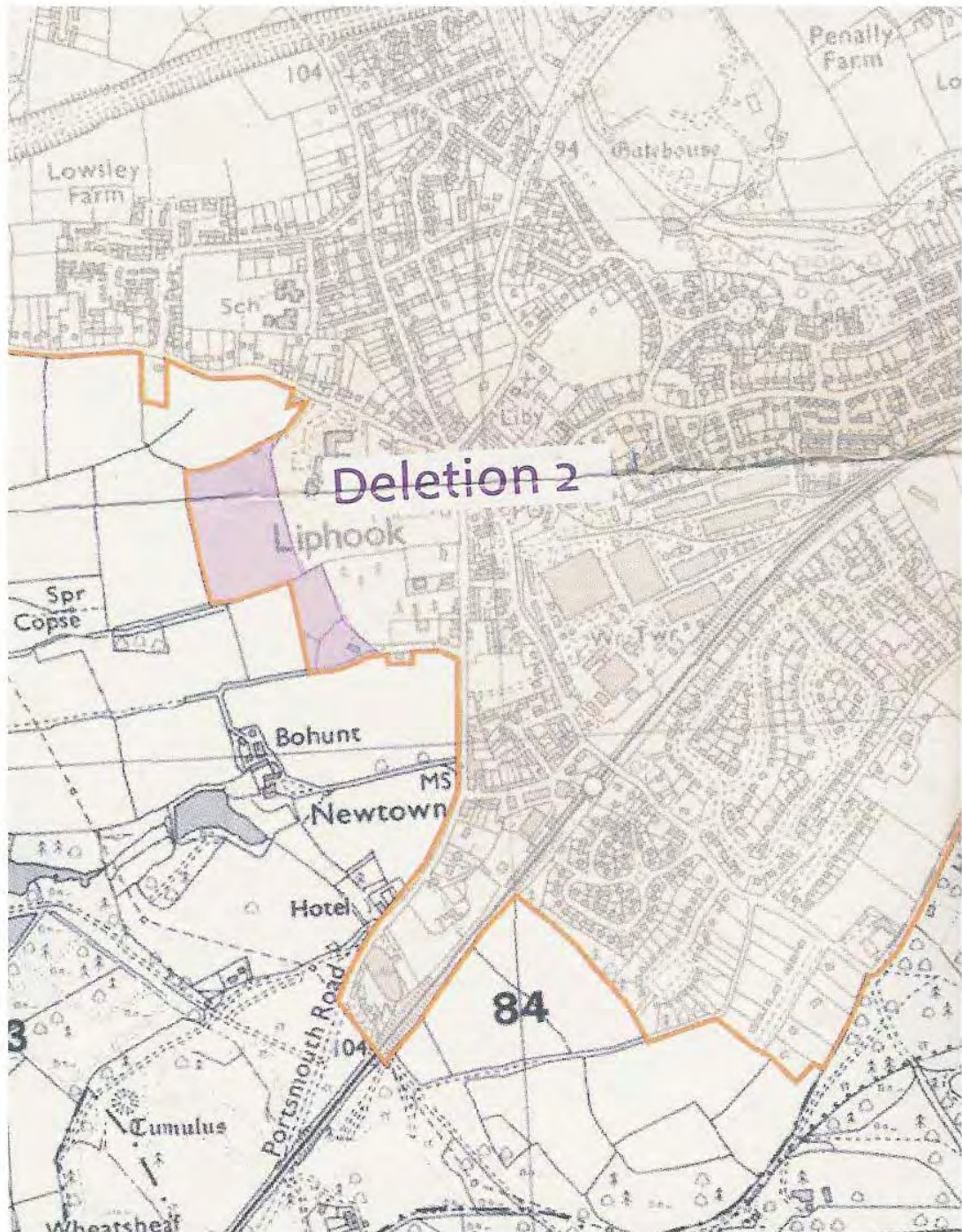
Deletion 1(a)

Deletion 1 now to be included in PSDNP

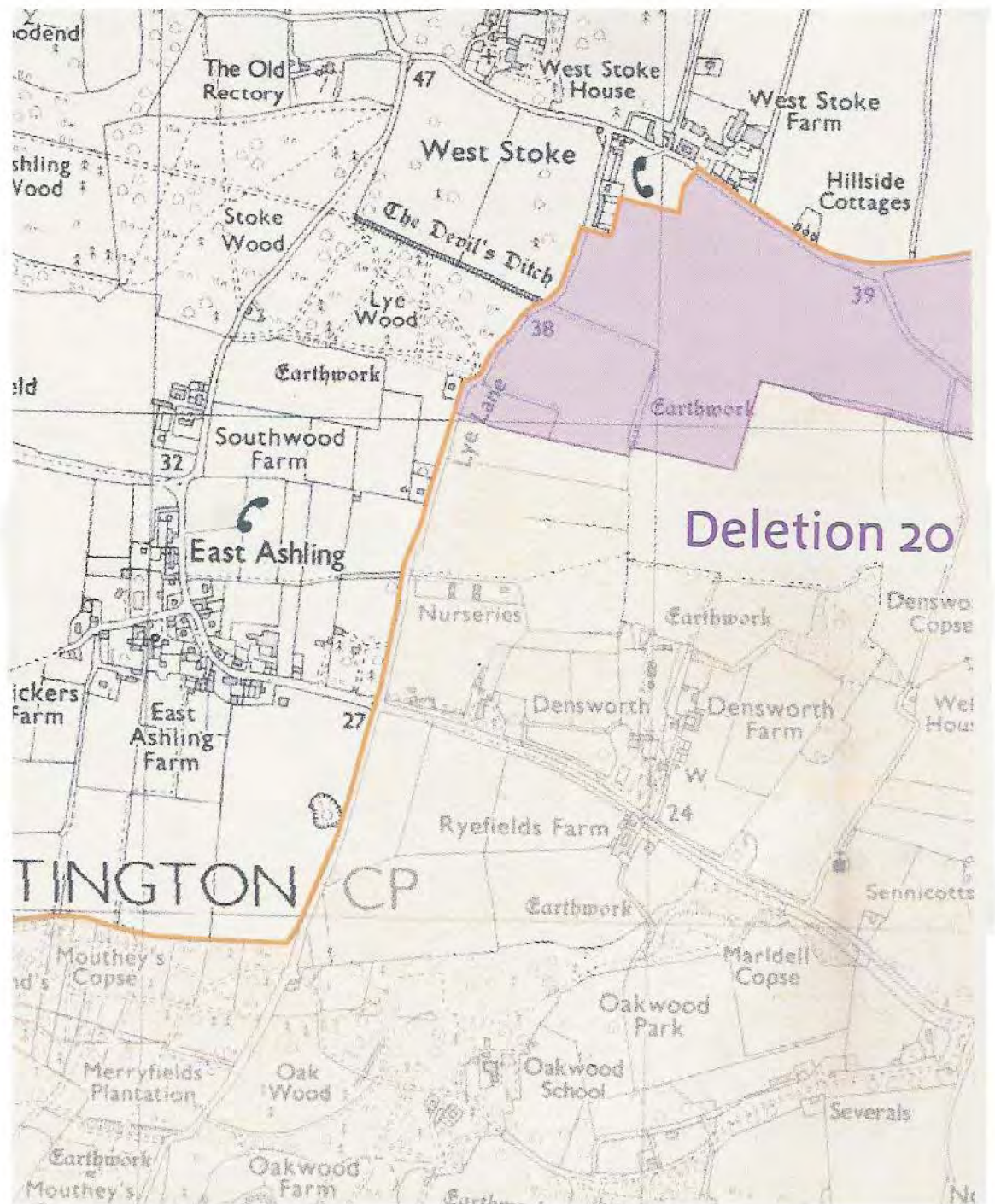


Deletion 2

No change
To remain deleted from PSDNP

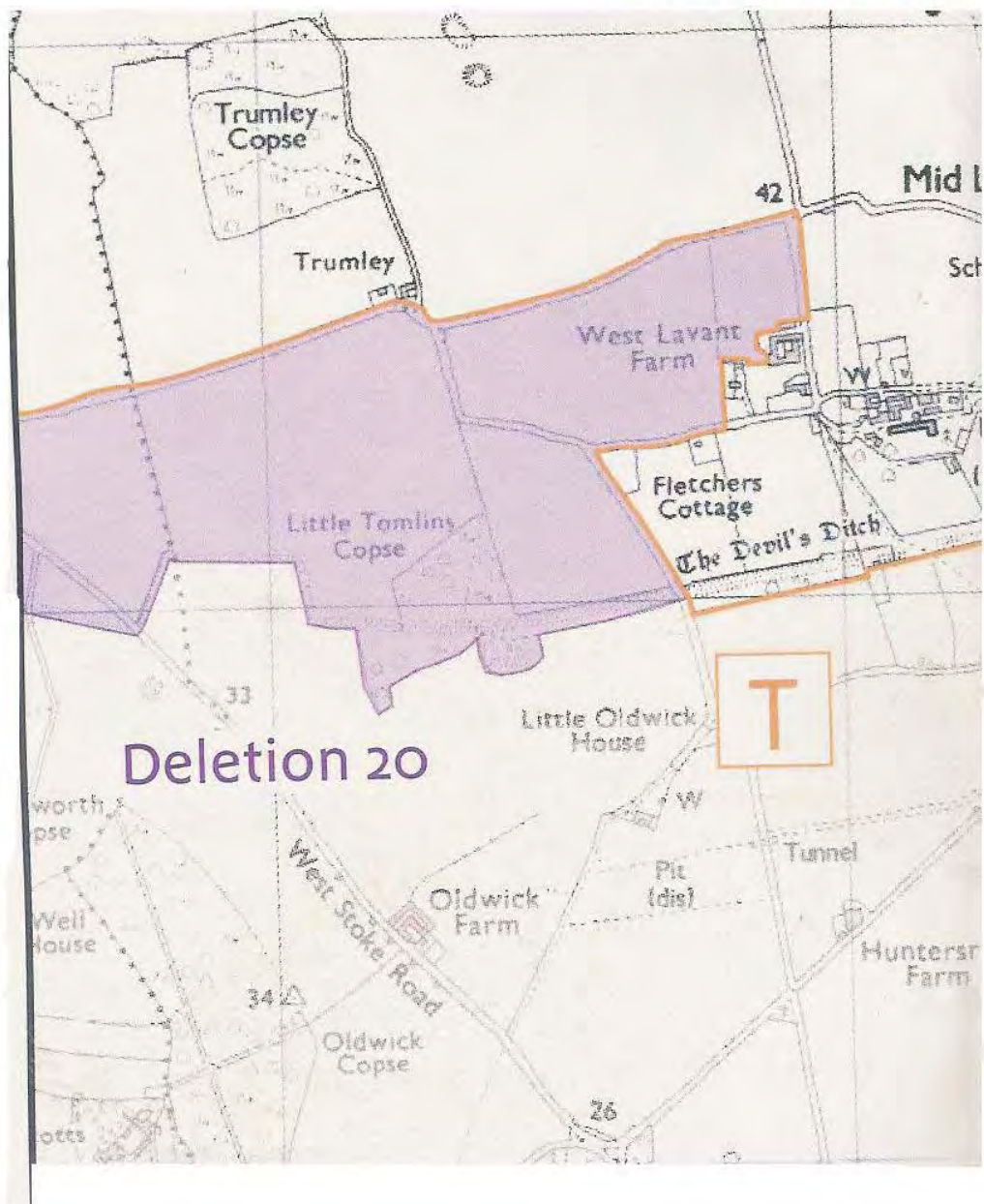


Deletion 20



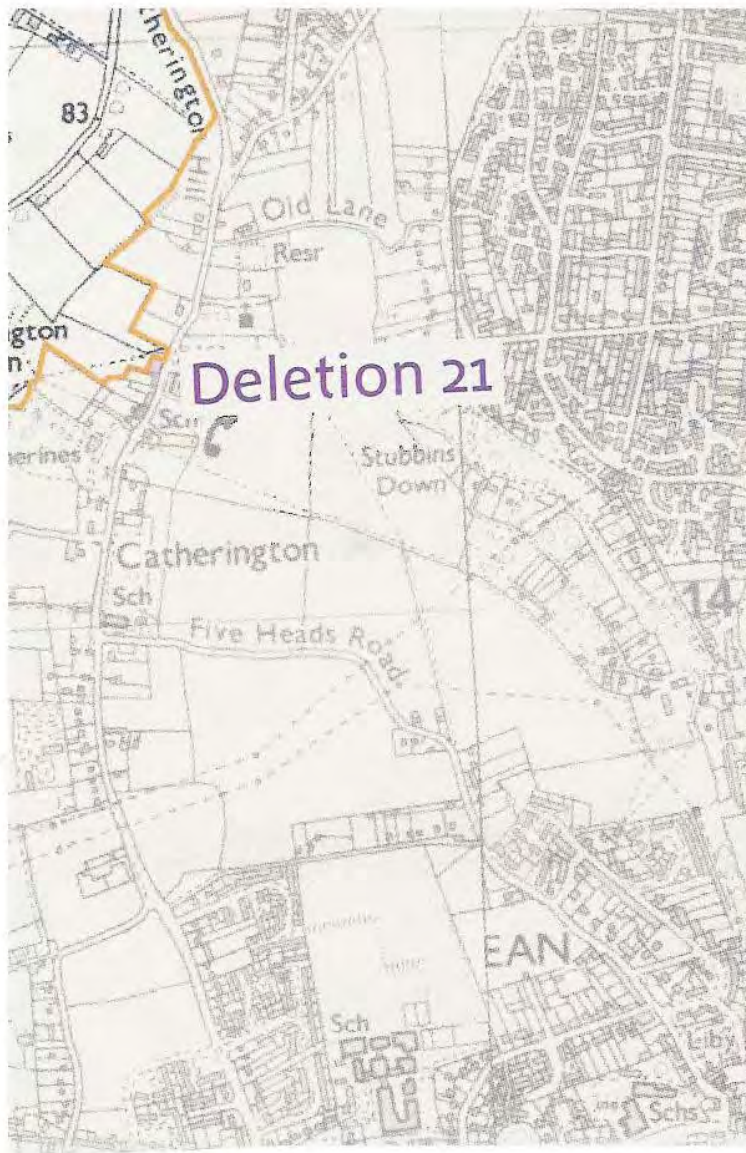
No change, to remain outside SDNP

Deletion 20a



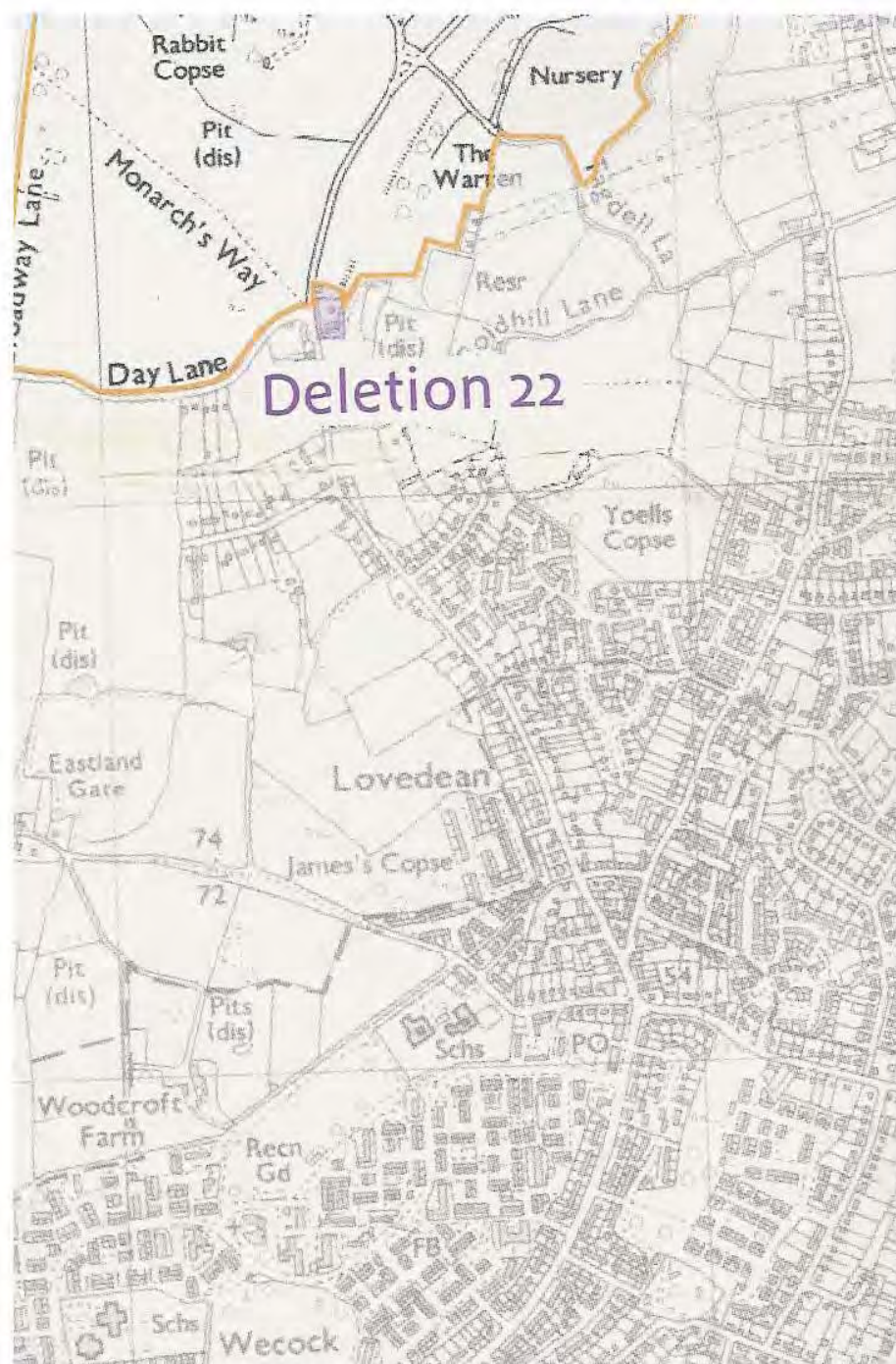
No change, to remain outside PSDNP

Deletion 21



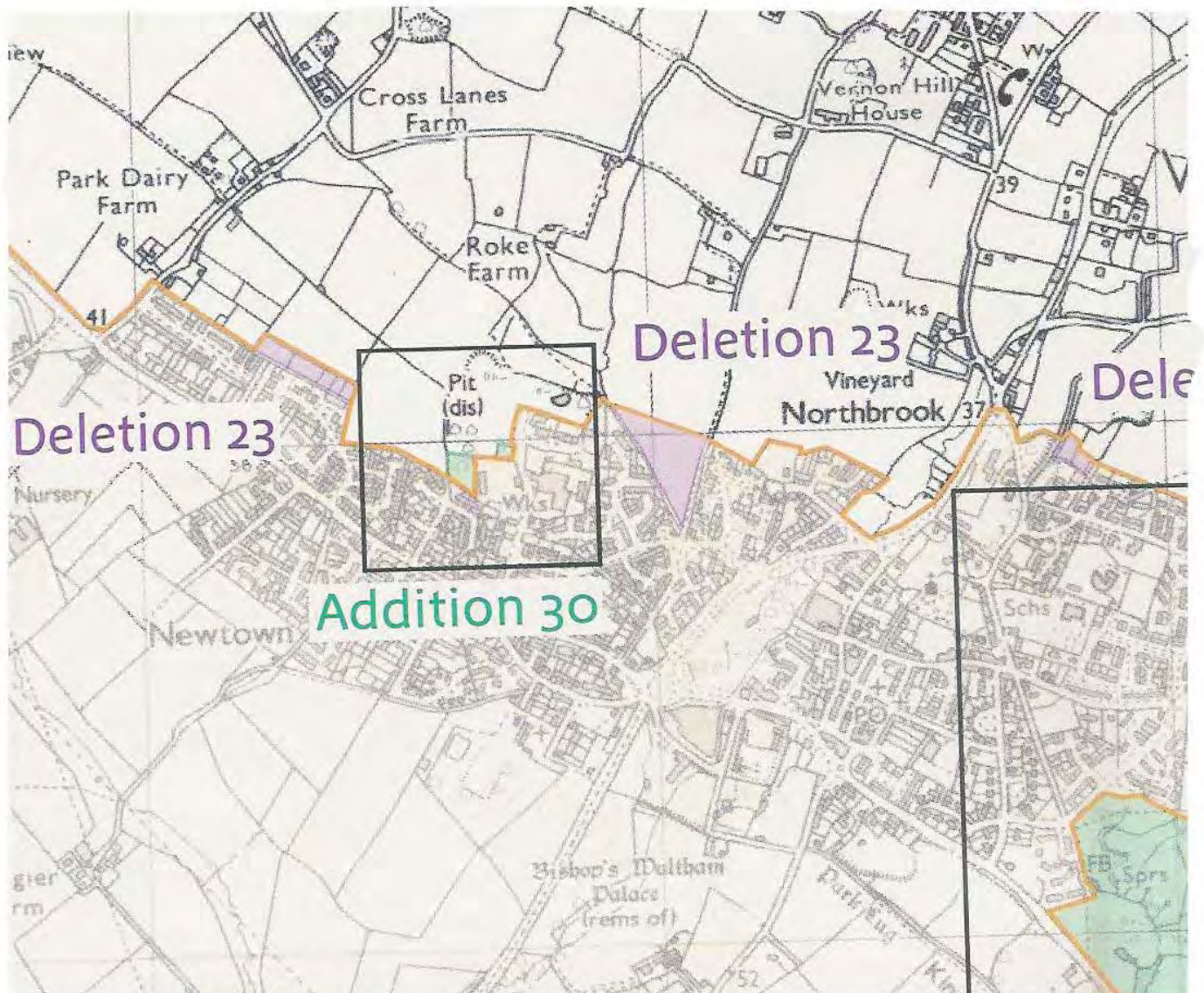
No change, to remain outside PSDNP

Deletion 22



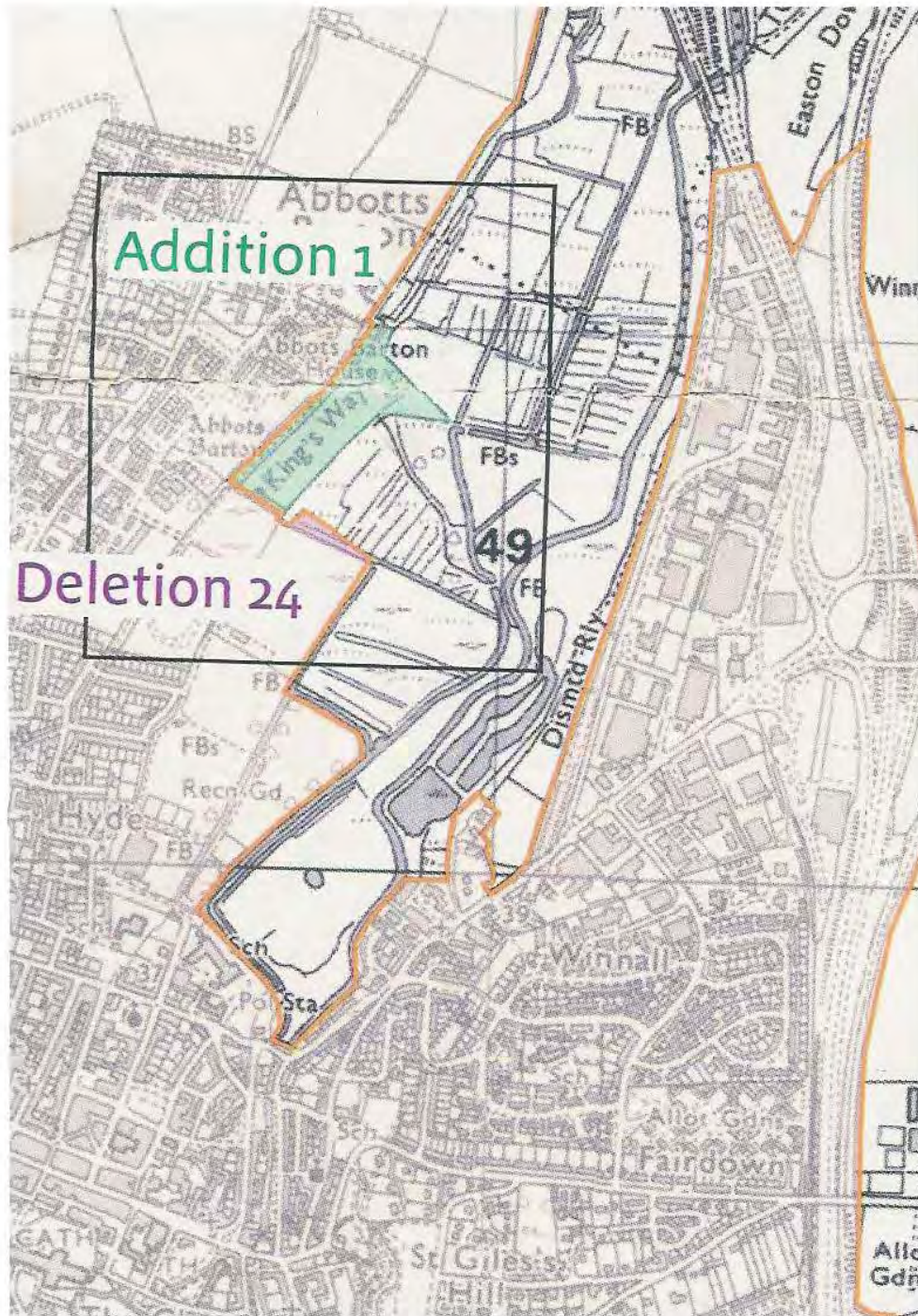
No change, to remain outside PSDNP

Deletion 23



No change, to remain outside PSDNP

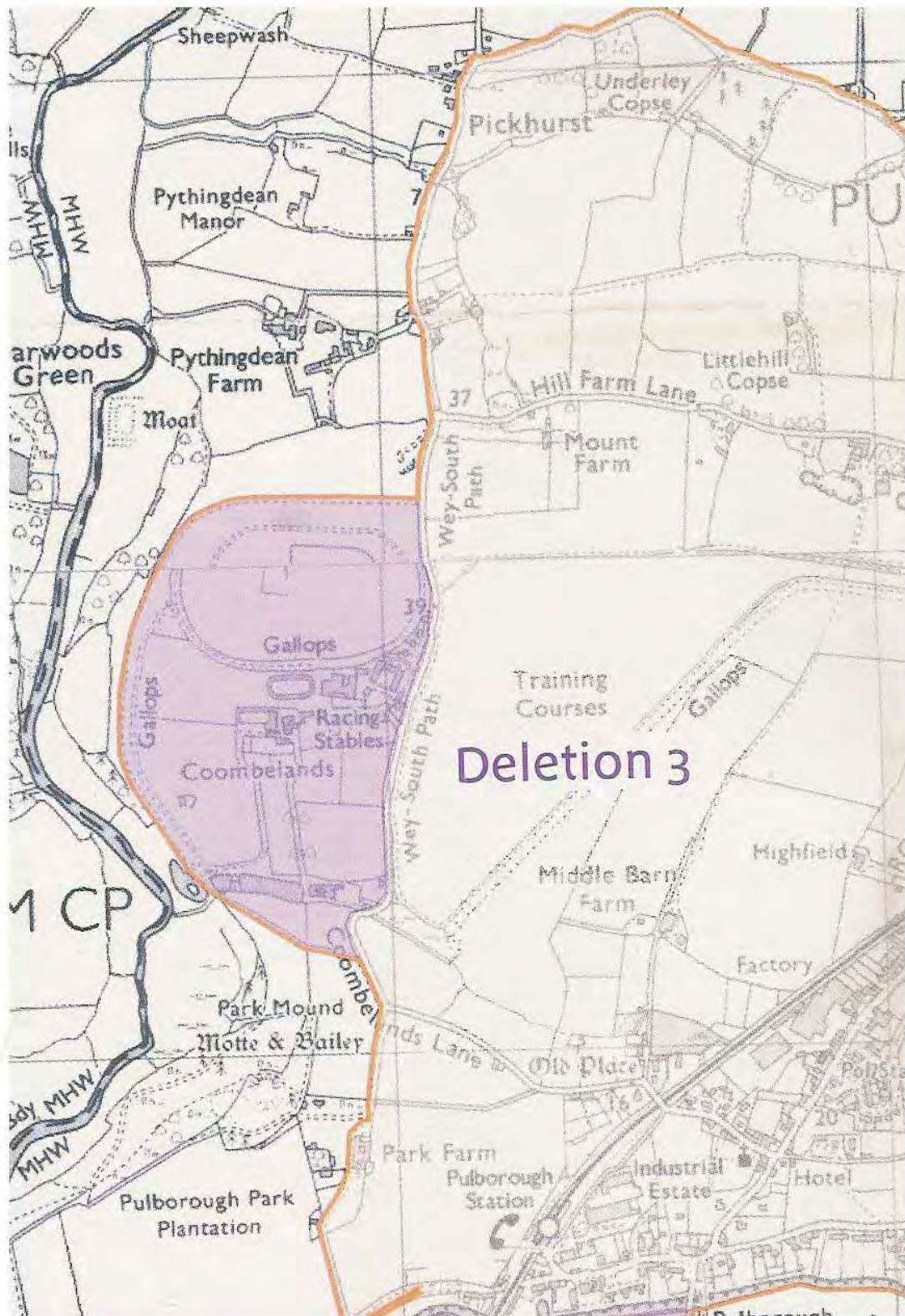
Deletion 24



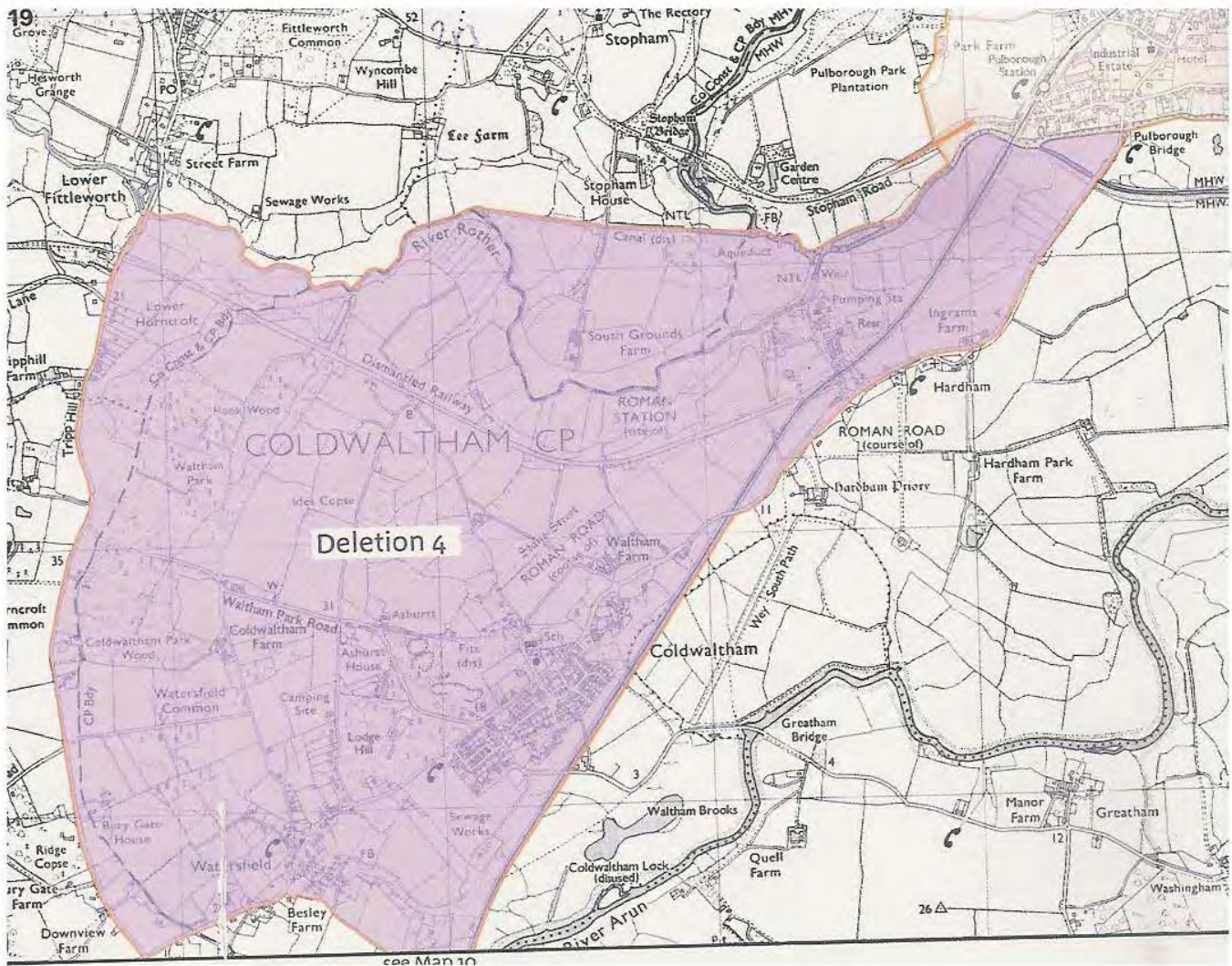
No change, to remain outside PSDNP

Deletion 3

No change. To remain deleted from PSDNP



Deletion 4



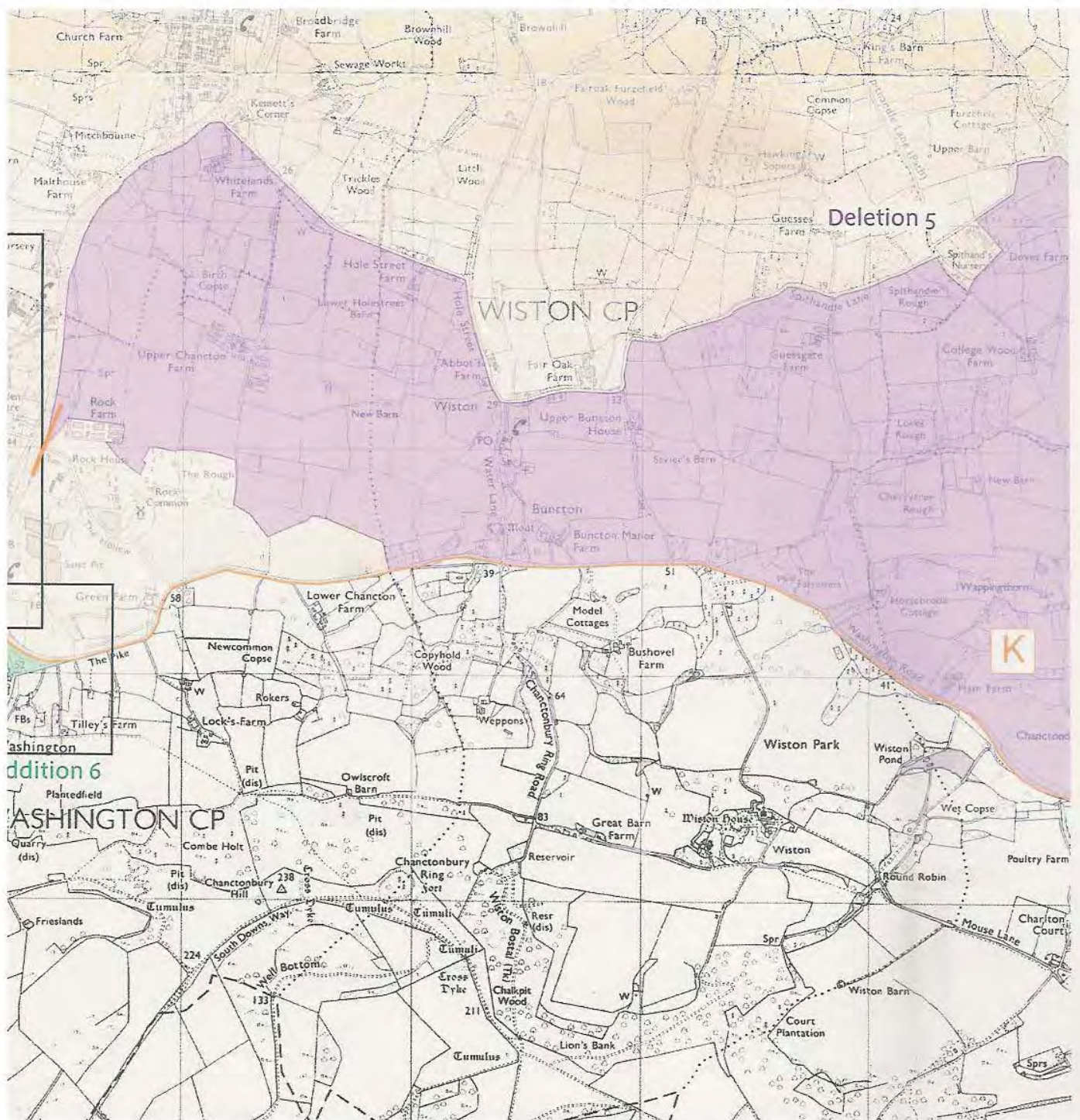
No change, to remain deleted from the PSDNP

Deletion 4(a)



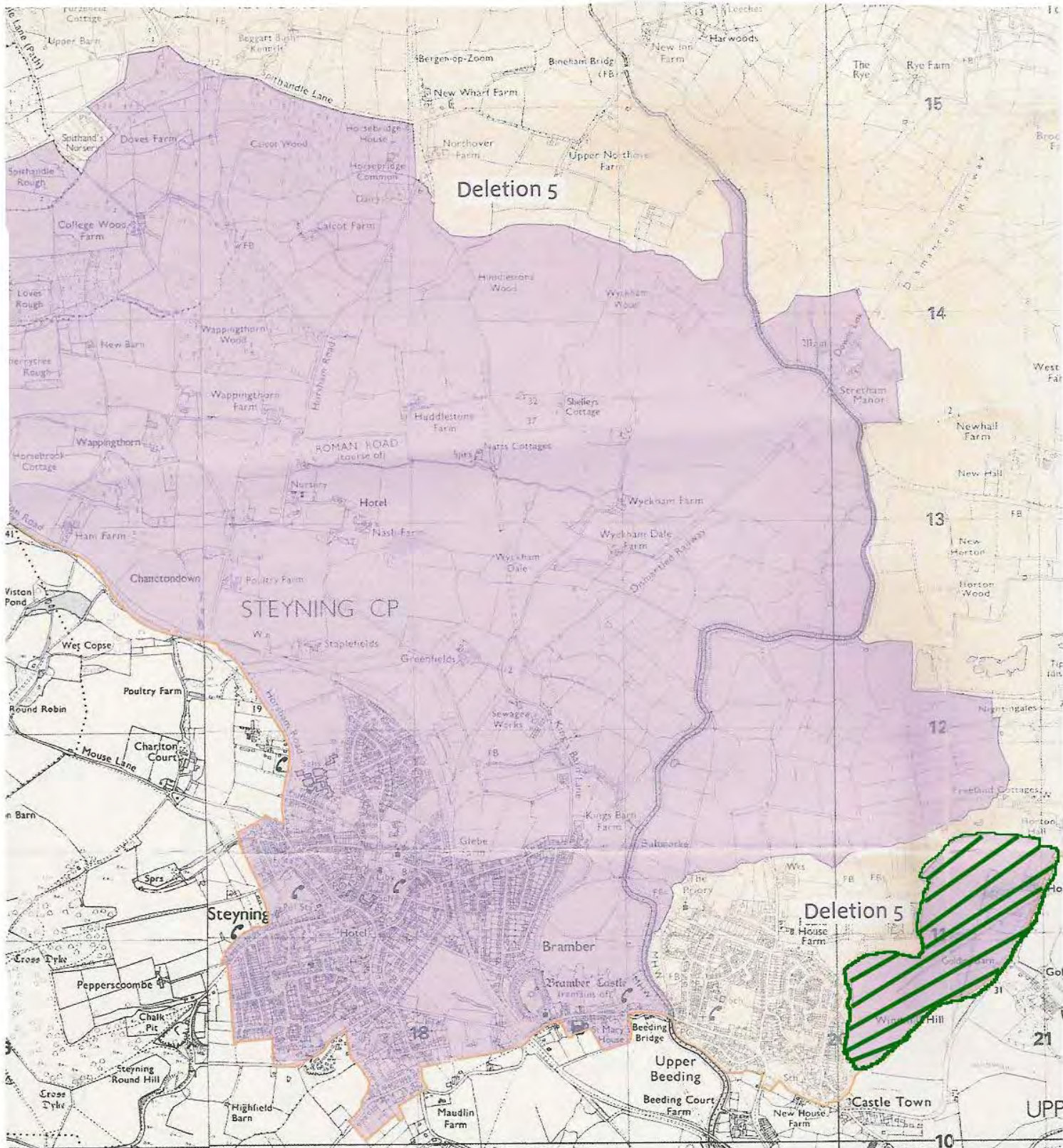
No change, to remain outside PSDNP

Deletion 5



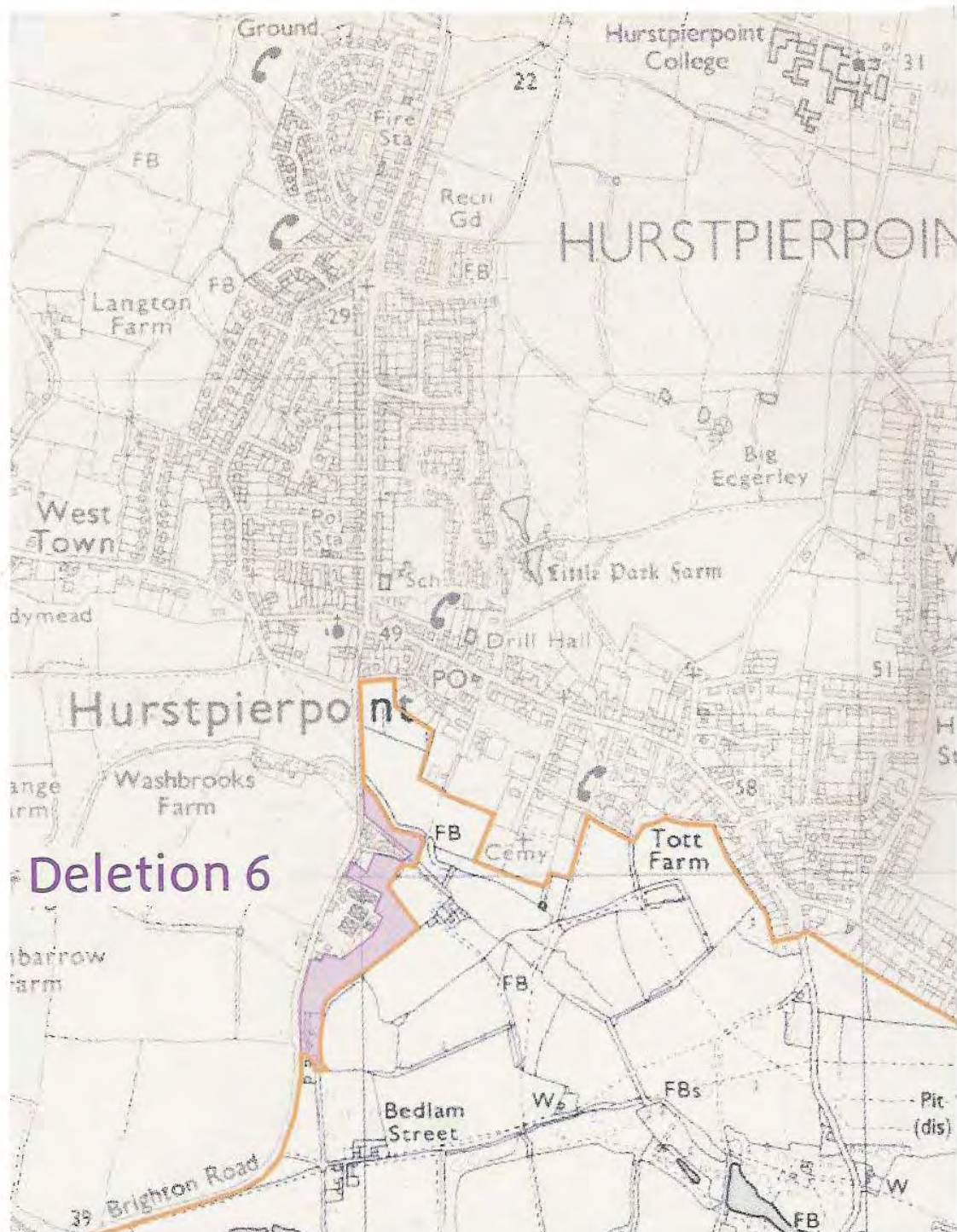
No change, to remain excluded from PSDNP

Deletion 5(a)

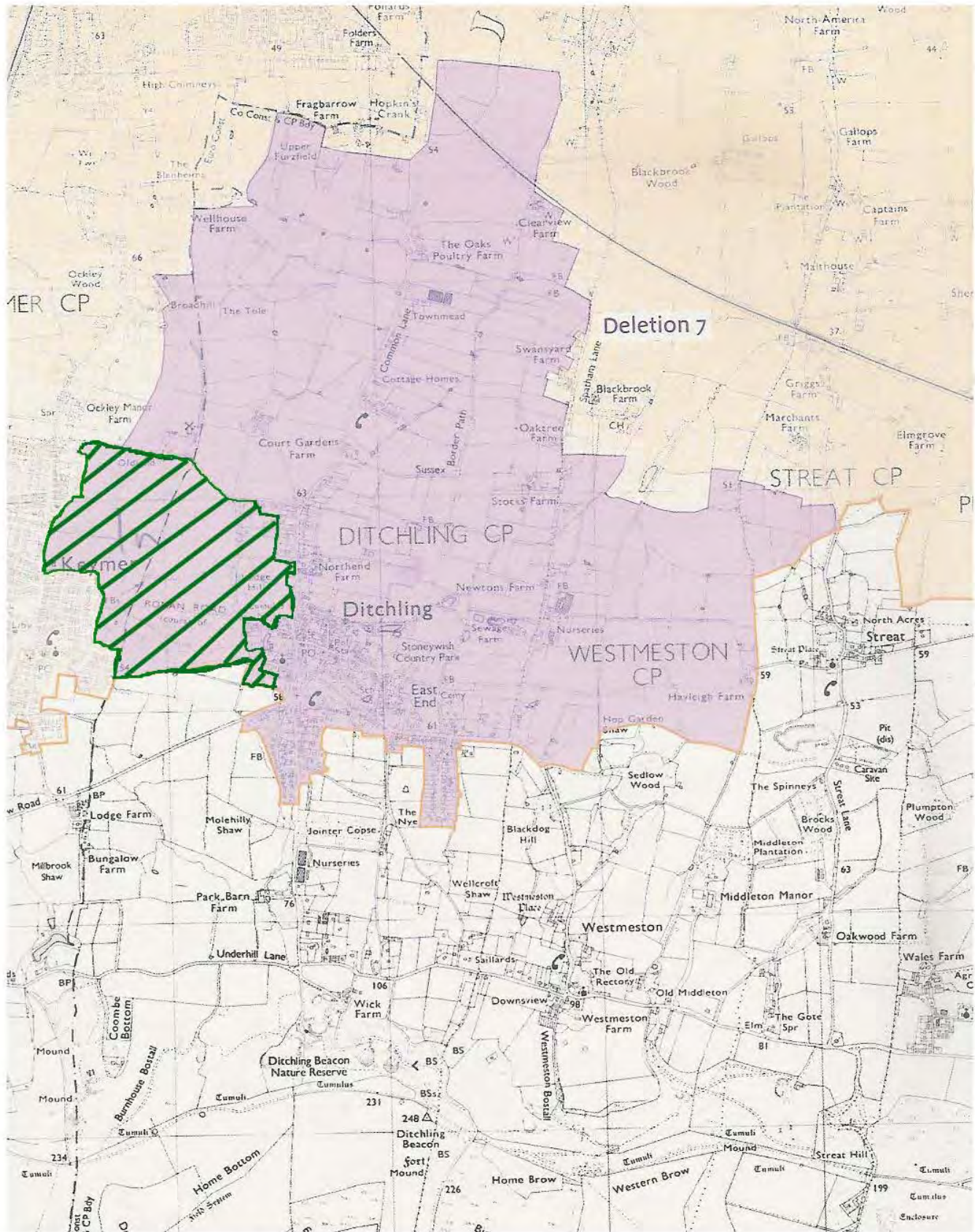


To remain outside the PSDNP apart from the small section in the south east as shown shaded green

To remain outside the PSDNP

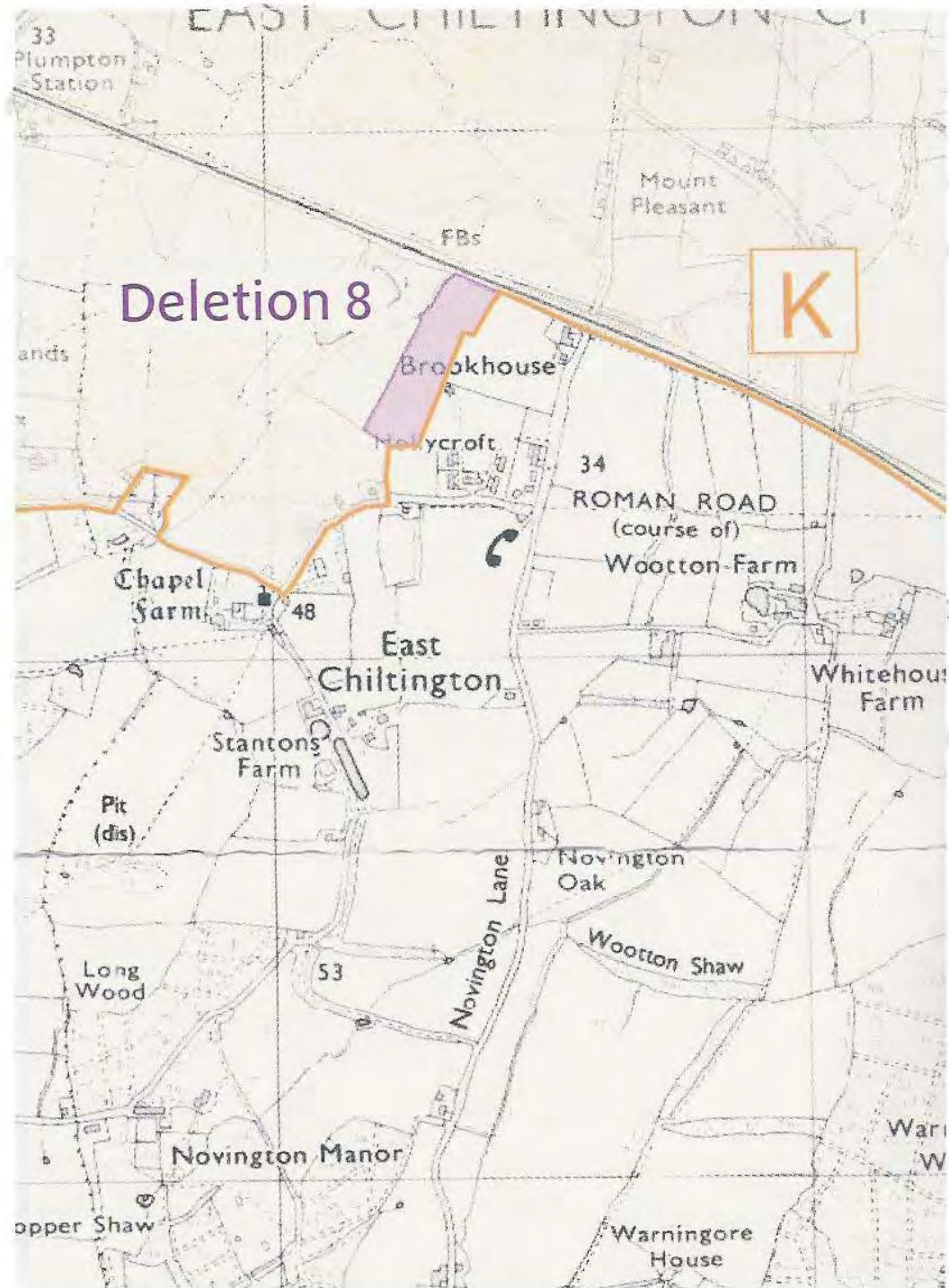


Deletion 7



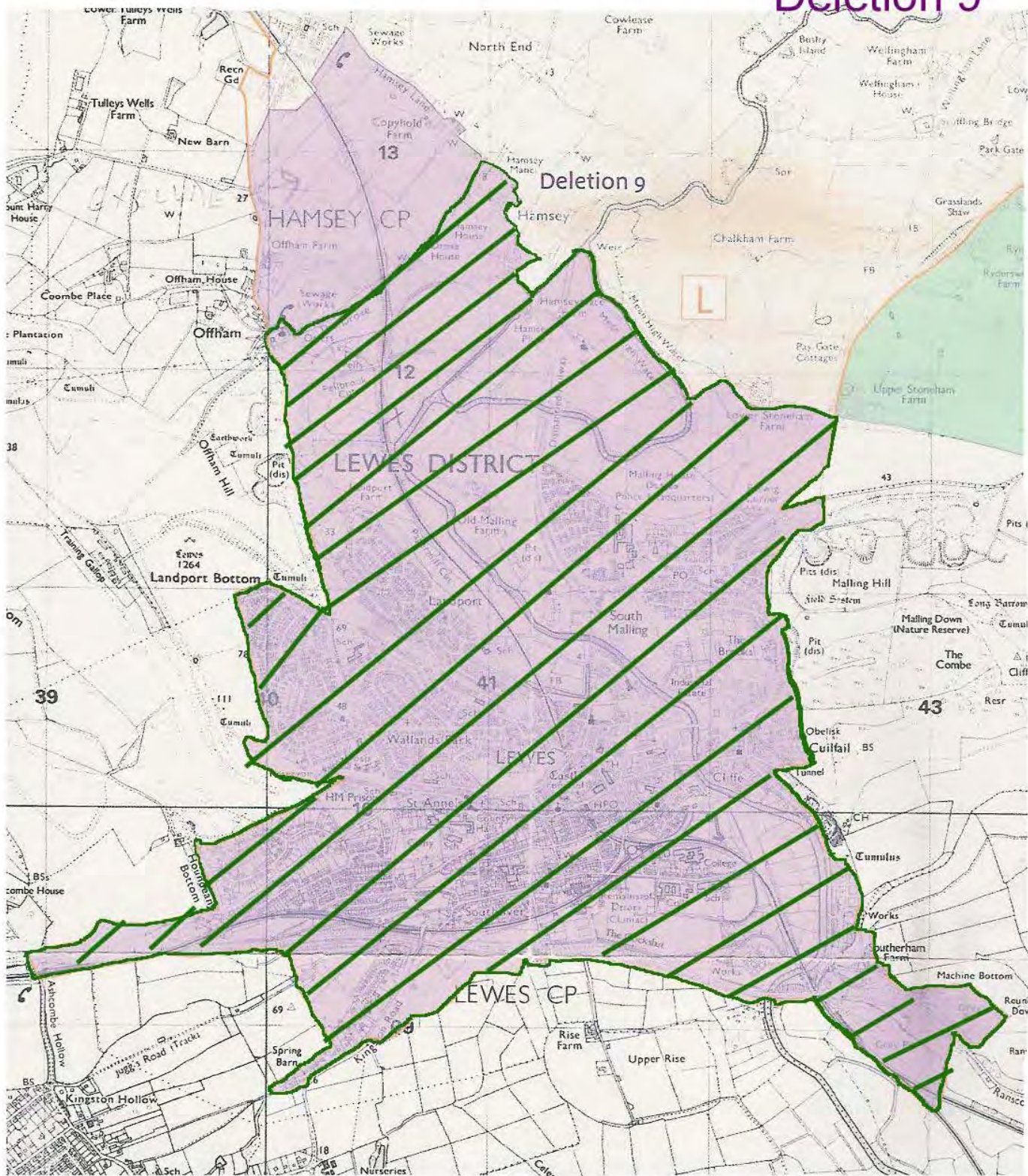
Deletion 7 to remain outside the PSDNP apart from the south west corner shown shaded green

Deletion 8



No change. To remain outside the PSDNP

Deletion 9



Deletion 9 now recommended for inclusion in the PSDNP apart from the top section beyond The Drove

New Deletion

New Deletion - Land north of Idehurst Farm

