

Planning Committee Meeting

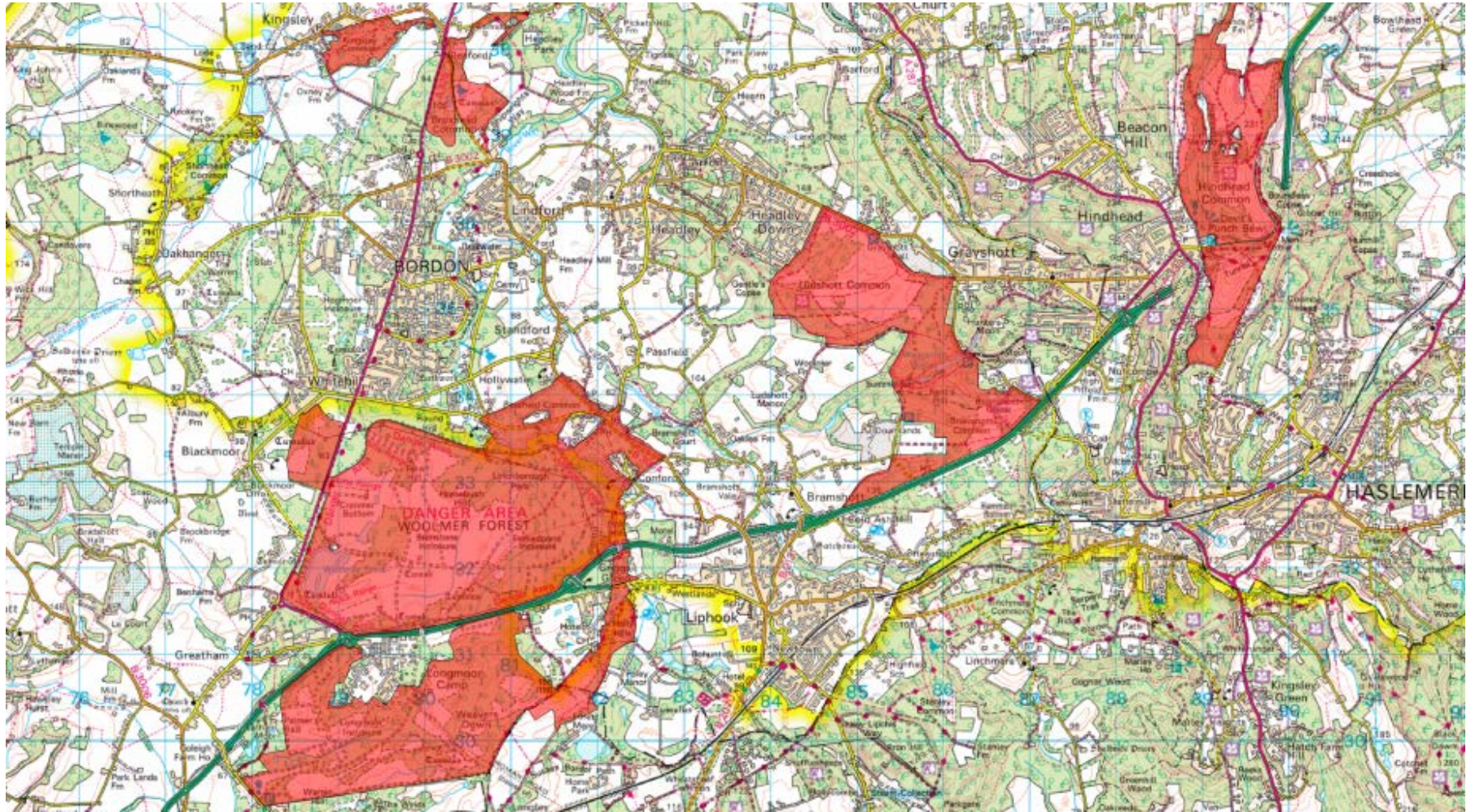
12 July 2018

Agenda Item 12

The Wealden Heaths Phase II Special Protection Area –
Supplementary Planning Document



The Wealden Heaths Phase II SPA



Recommendation

The Committee is recommended to:

1. Note the content of the Consultation Statement (Appendix 1 of the report)
2. Adopt the revised Wealden Heaths Phase II Special Protection Area Supplementary Document (Appendix 2 of the report)

