

Planning Committee Meeting

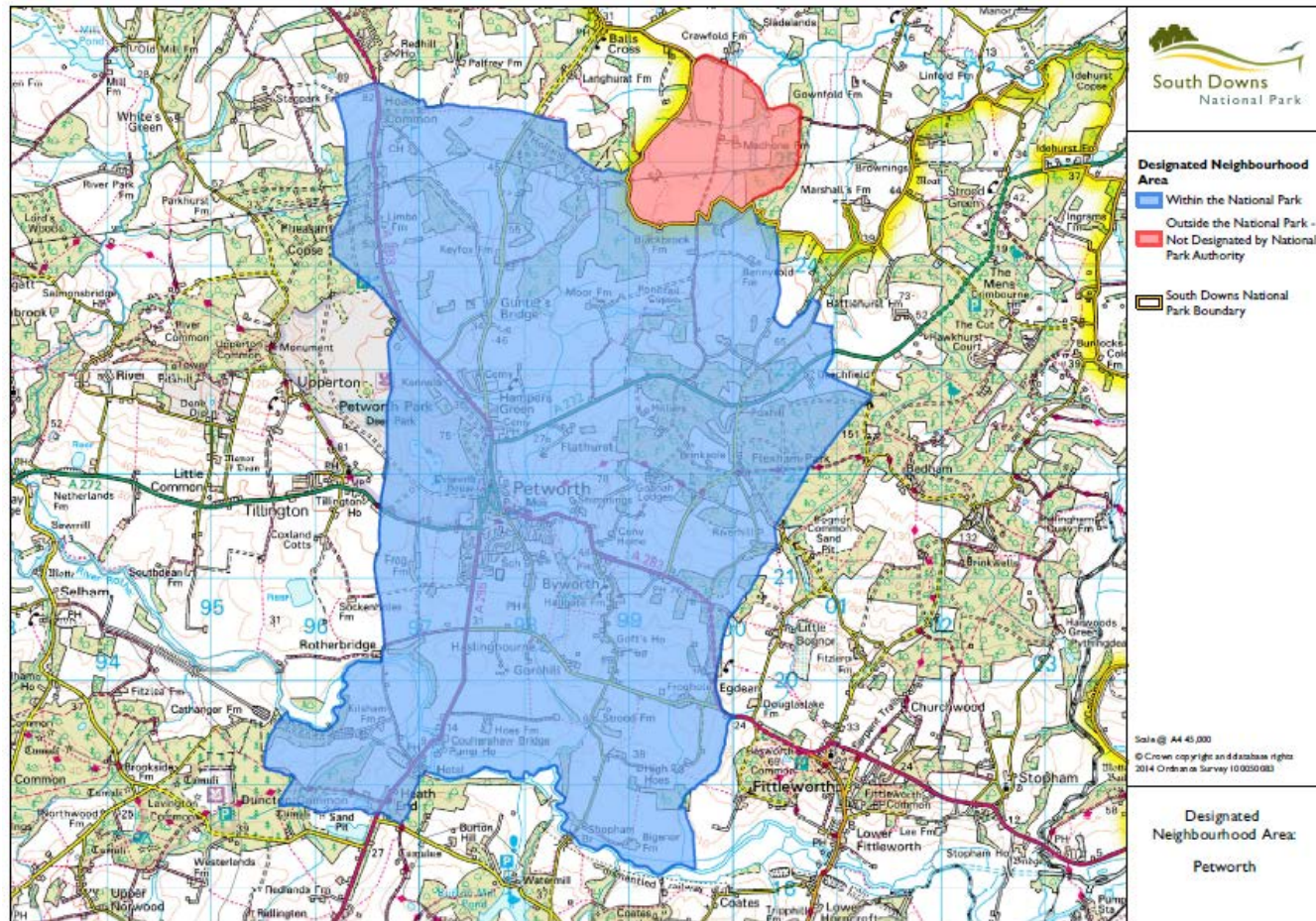
12 July 2018

Agenda Item 10

Making of the Petworth NDP



Petworth Designated Neighbourhood Area



Petworth Today



Housing Site Allocations



Figure 4: Housing Site Allocations

Policy WS4: Land east of Hampers Common Industrial Estate

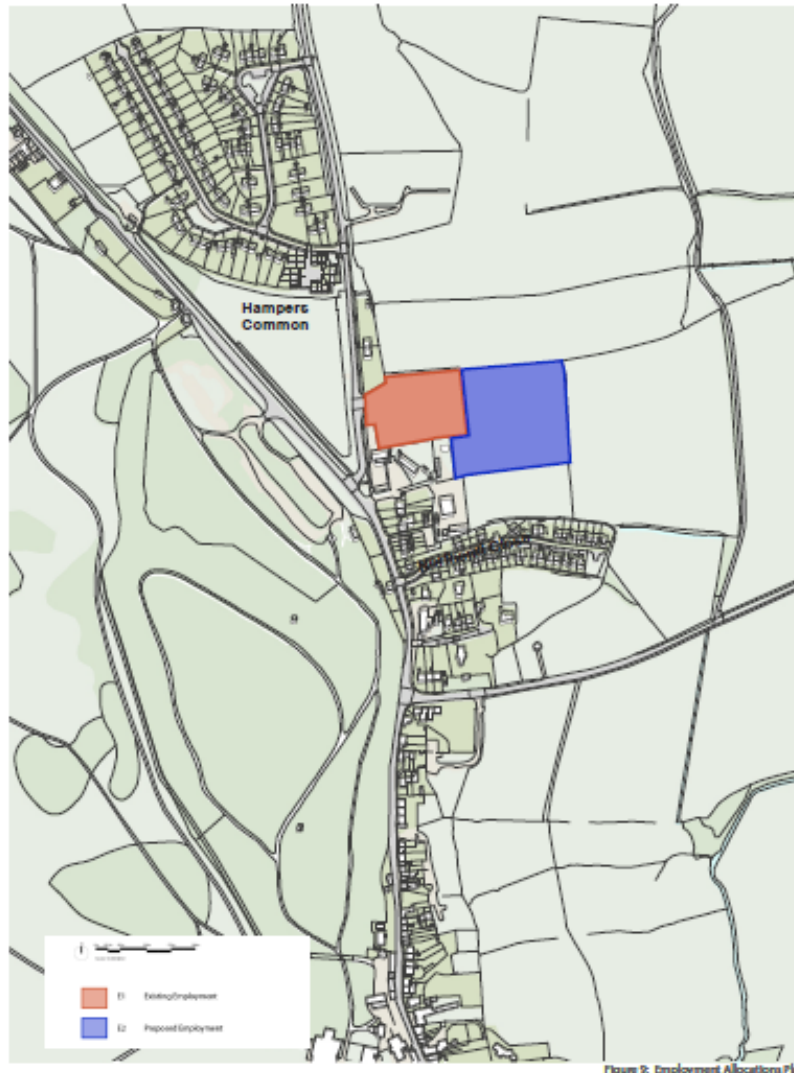
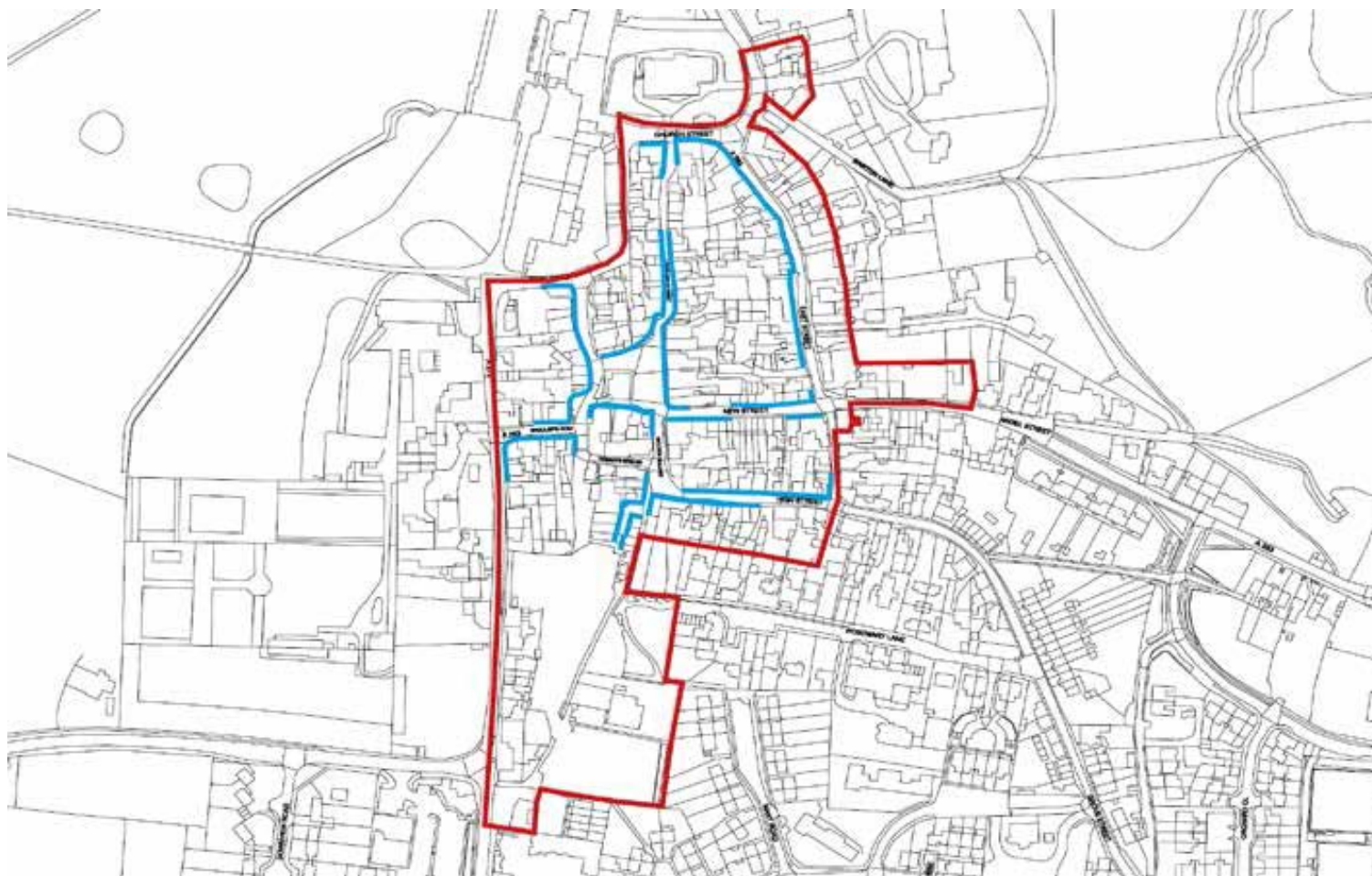


Figure 9: Employment Allocations Plan

Policy WS1: Petworth Town Centre



Referendum Results

A Referendum took place on Thursday 7 June 2018 with the following results:

- Turn out = 36.32%
- Votes & % in favour = 662 (77%)
- Votes & % against = 191 (22%)

Recommendation

The Committee is recommended to:

1. Note the outcome of the Petworth Referendum;
2. Agree to make the Petworth Neighbourhood Development Plan part of the SDNPA's Development Plan for the part of the parish that lies within the National Park.

