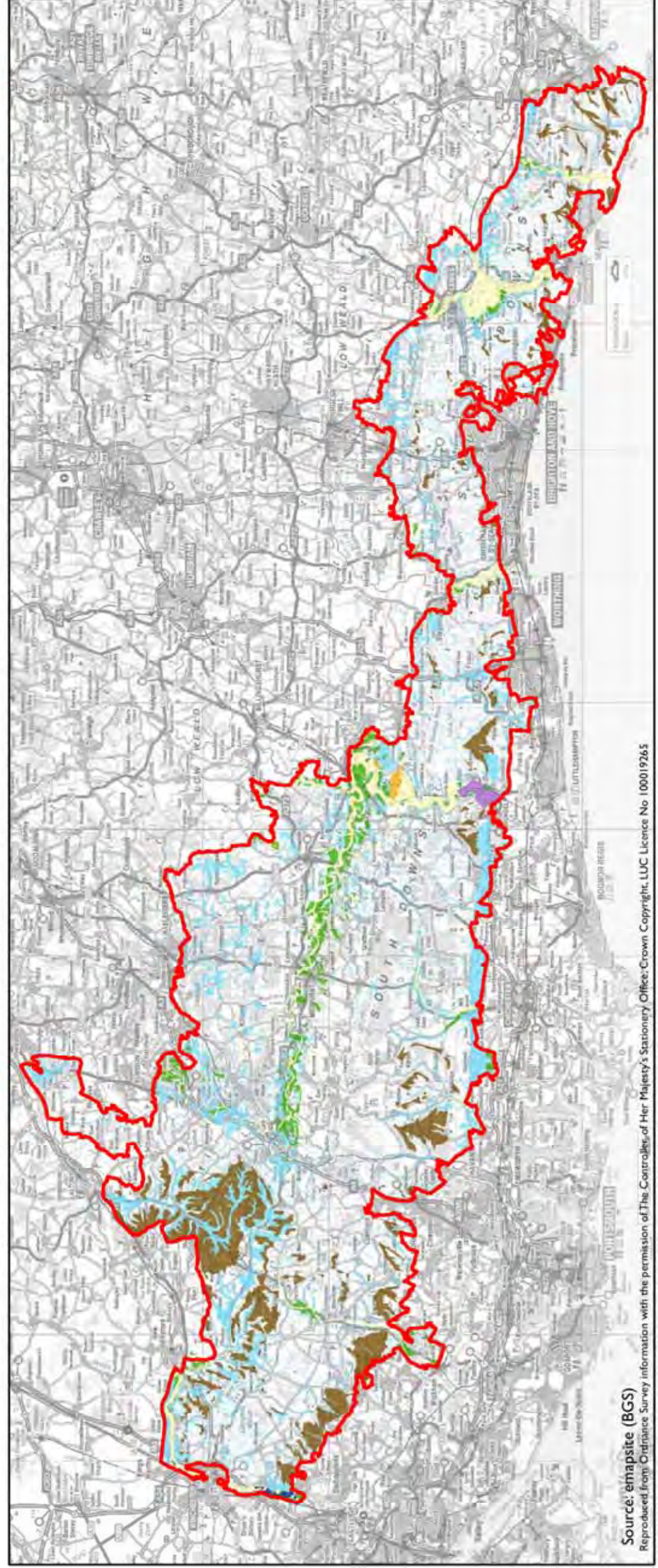
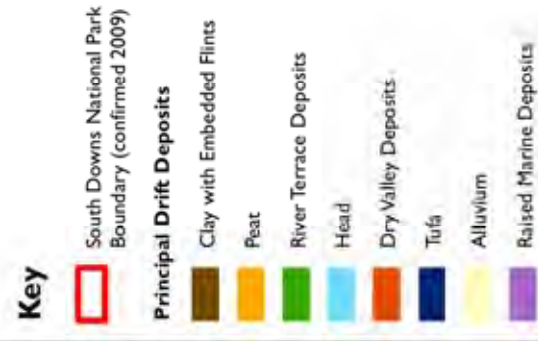
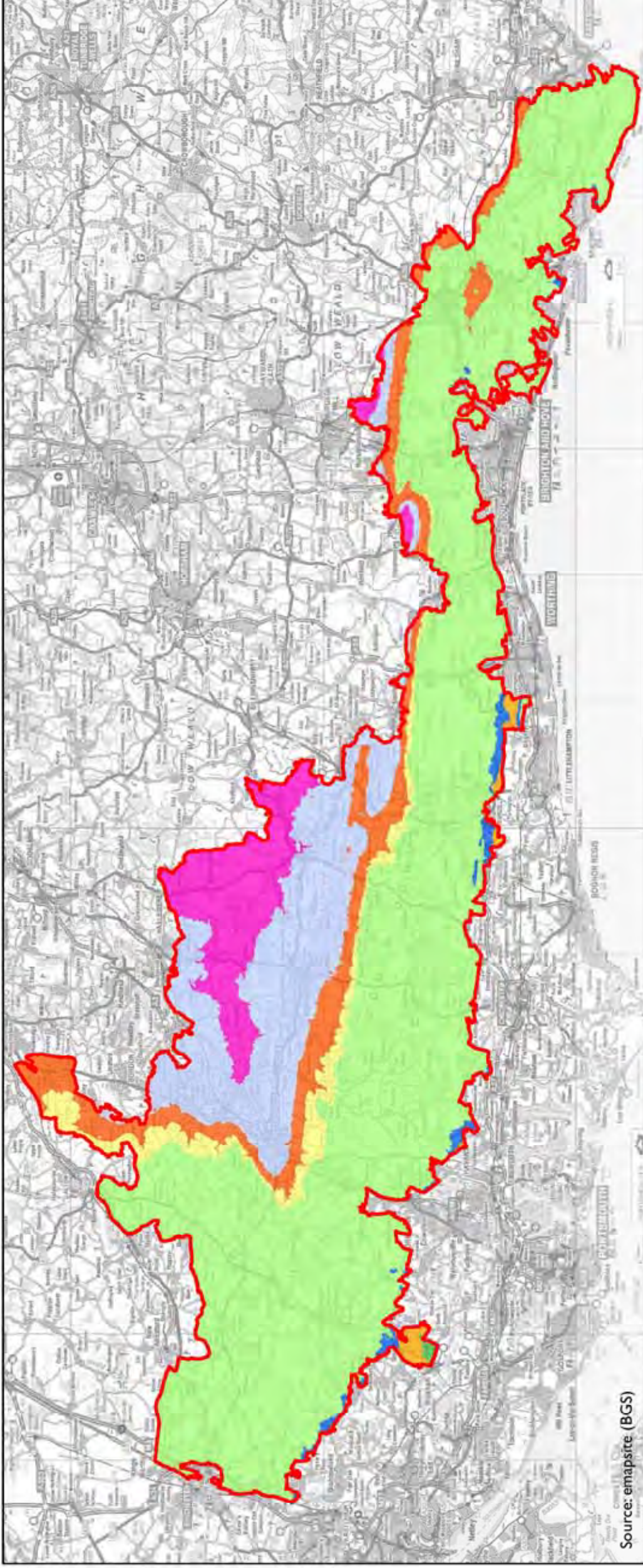
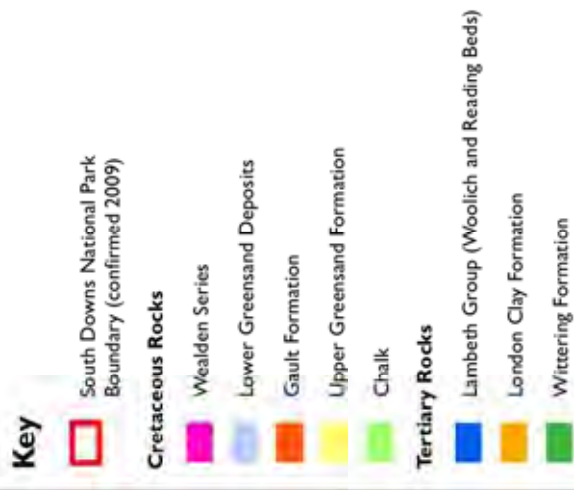


# South Downs Integrated Landscape Character Assessment (Updated)

## Figure 3.1: Simplified Geology



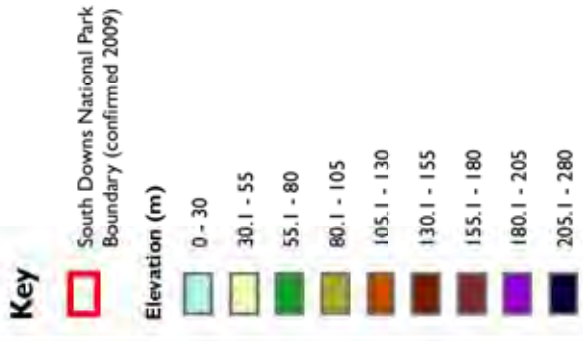
Date Prepared: 22/09/2011



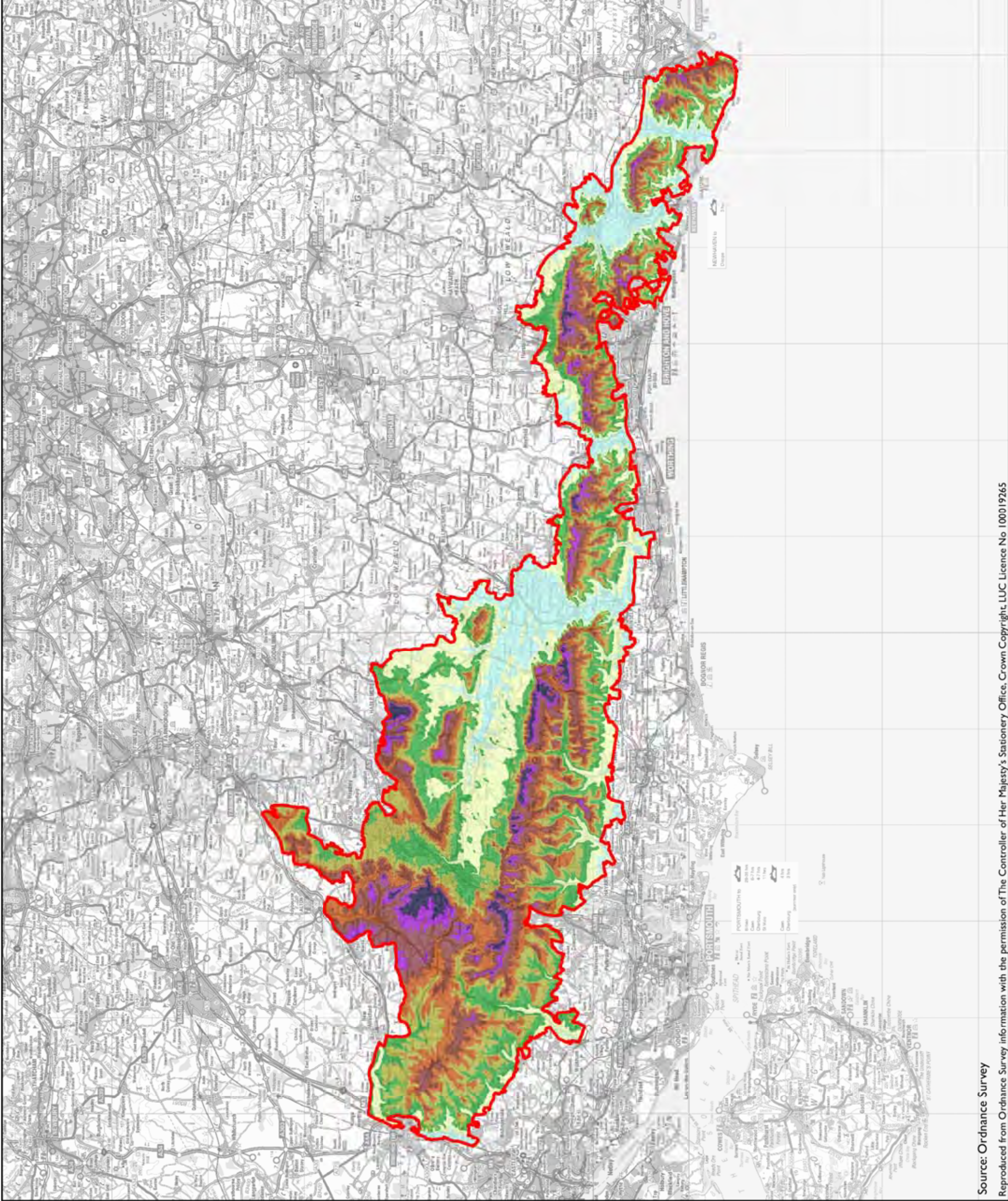
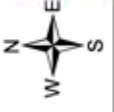


# South Downs Integrated Landscape Character Assessment (Updated)

Figure 3.2: Topography

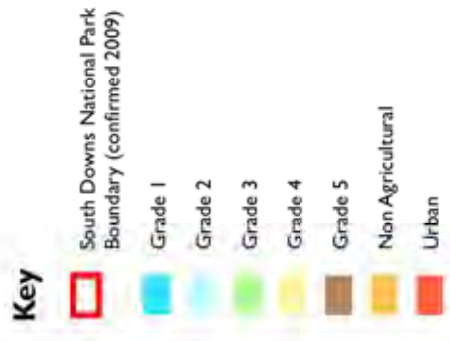


Date Prepared: 22/09/2011

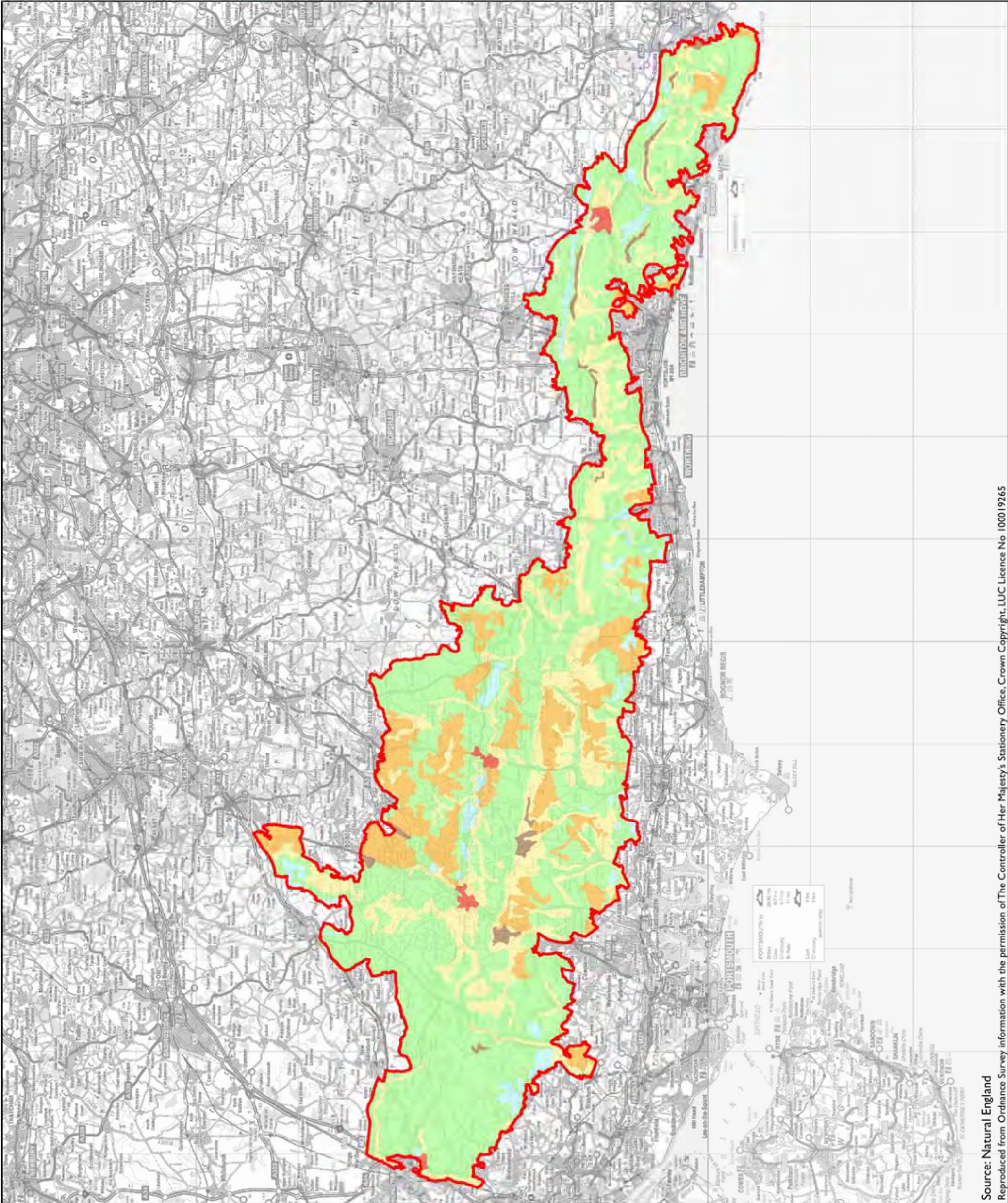




**South Downs Integrated  
Landscape Character  
Assessment (Updated)  
Figure 3.3: Agricultural Land  
Classification**



Date Prepared: 22/09/2011





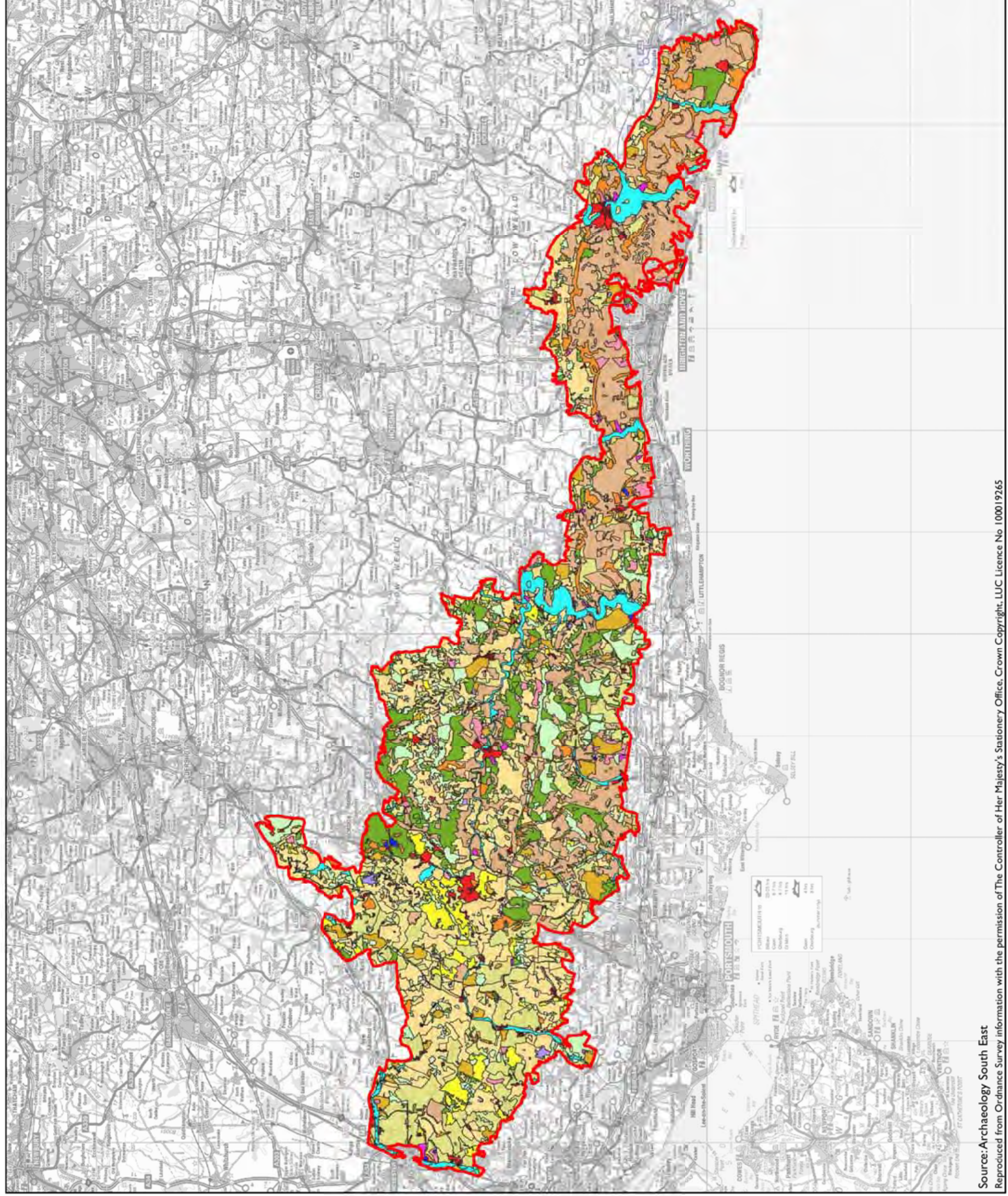
# South Downs Integrated Landscape Character Assessment (Updated)

## Figure 4.1: Historic Landscape Classification

### Key

- South Downs National Park Boundary (confirmed 2009)
- Fields**
- 0101- Fieldscapes Assarts
- 0102- Early Enclosures
- 0103- Recent Enclosures
- 0104- Modern Fields
- Woodland**
- 0201- Pre 1800 Woodland
- 0202- Post 1800 Woodland
- Horticulture**
- 03- Horticulture
- Unenclosed**
- 04- Unenclosed
- Settlement**
- 0501- Pre 1800 Settlement
- 0502- Post 1800 Settlement
- Valley Floor**
- 06- Valley Floor
- Coastal**
- 07- Coastal
- Industry**
- 08- Industry
- Designed Landscapes**
- 09- Designed Landscapes
- Military**
- 10- Military
- Communications**
- 11- Communications
- Water**
- 12- Water
- Recreation**
- 13- Recreation

Date Prepared: 22/09/2011







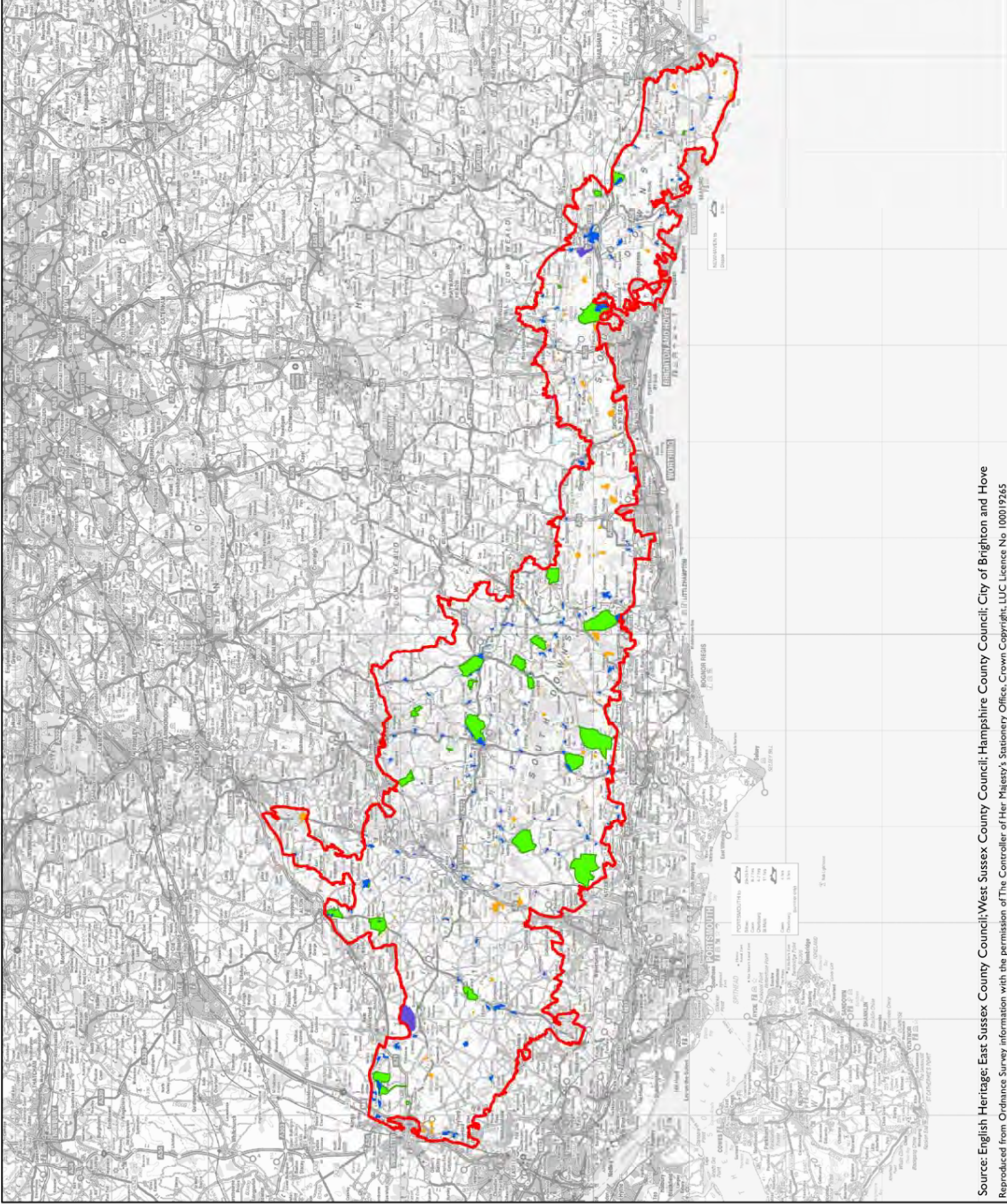
# South Downs Integrated Landscape Character Assessment (Updated)

## Figure 4.2: Historic Designations

### Key

-  South Downs National Park Boundary (confirmed 2009)
-  Scheduled Ancient Monuments
-  Historic Parks and Gardens
-  Registered Battlefields
-  Conservation Areas \*

\* Conservation Area information has not been updated on this map (since 2005) as it was not possible to collate data for all Local Authorities when the map was revised in 2011.



Date Prepared: 22/09/2011





# South Downs Integrated Landscape Character Assessment (Updated)

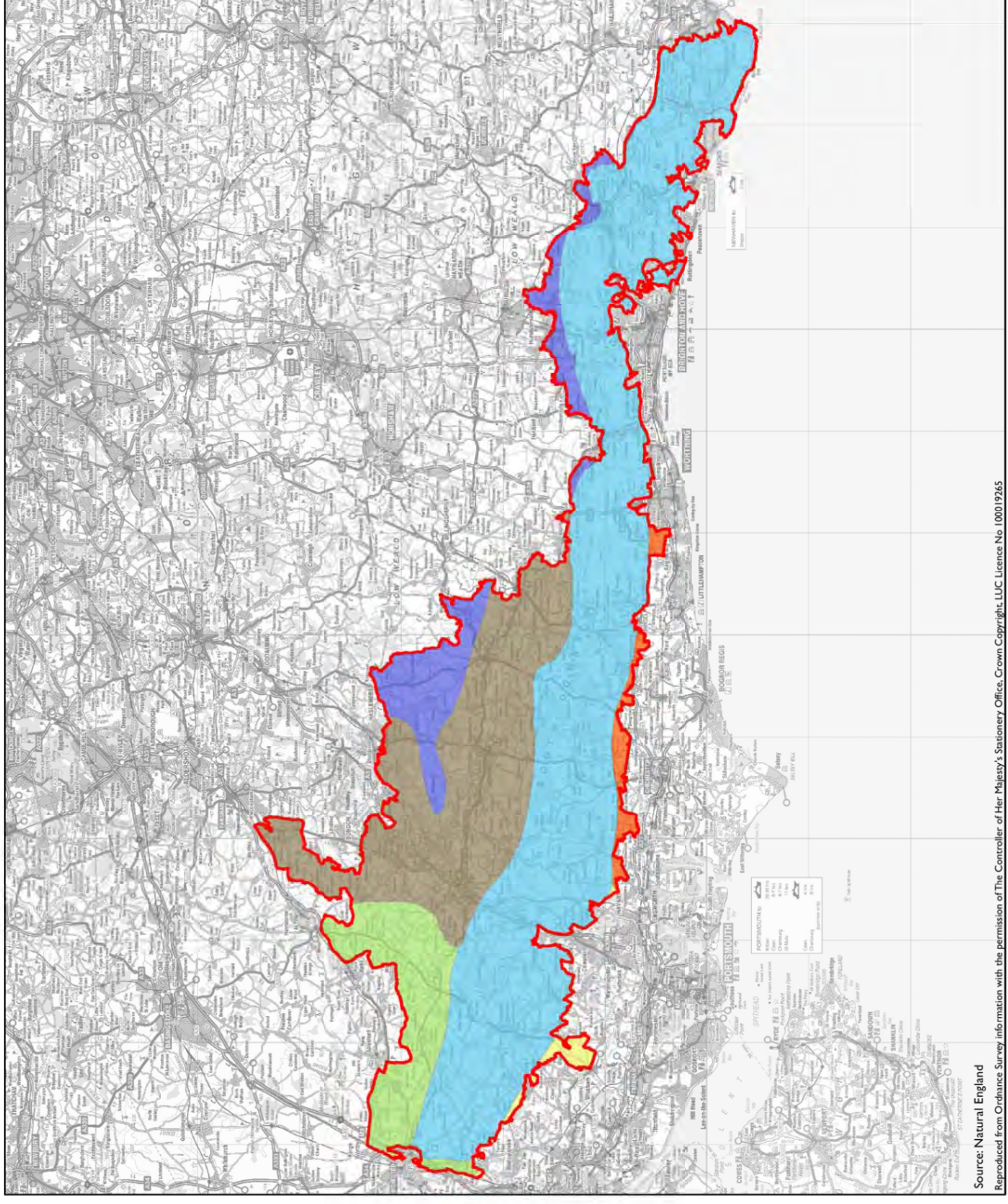
## Figure 5.1: National Character Areas

**Key**

- South Downs National Park Boundary (confirmed 2009)
- Hampshire Downs
- Low Weald
- South Coast Plain
- South Downs
- South Hampshire Lowlands
- Wealden Greensand

Date Prepared: 11/01/2012

**LUC LAND USE CONSULTANTS**  
ENVIRONMENTAL PLANNING DESIGN AND MANAGEMENT



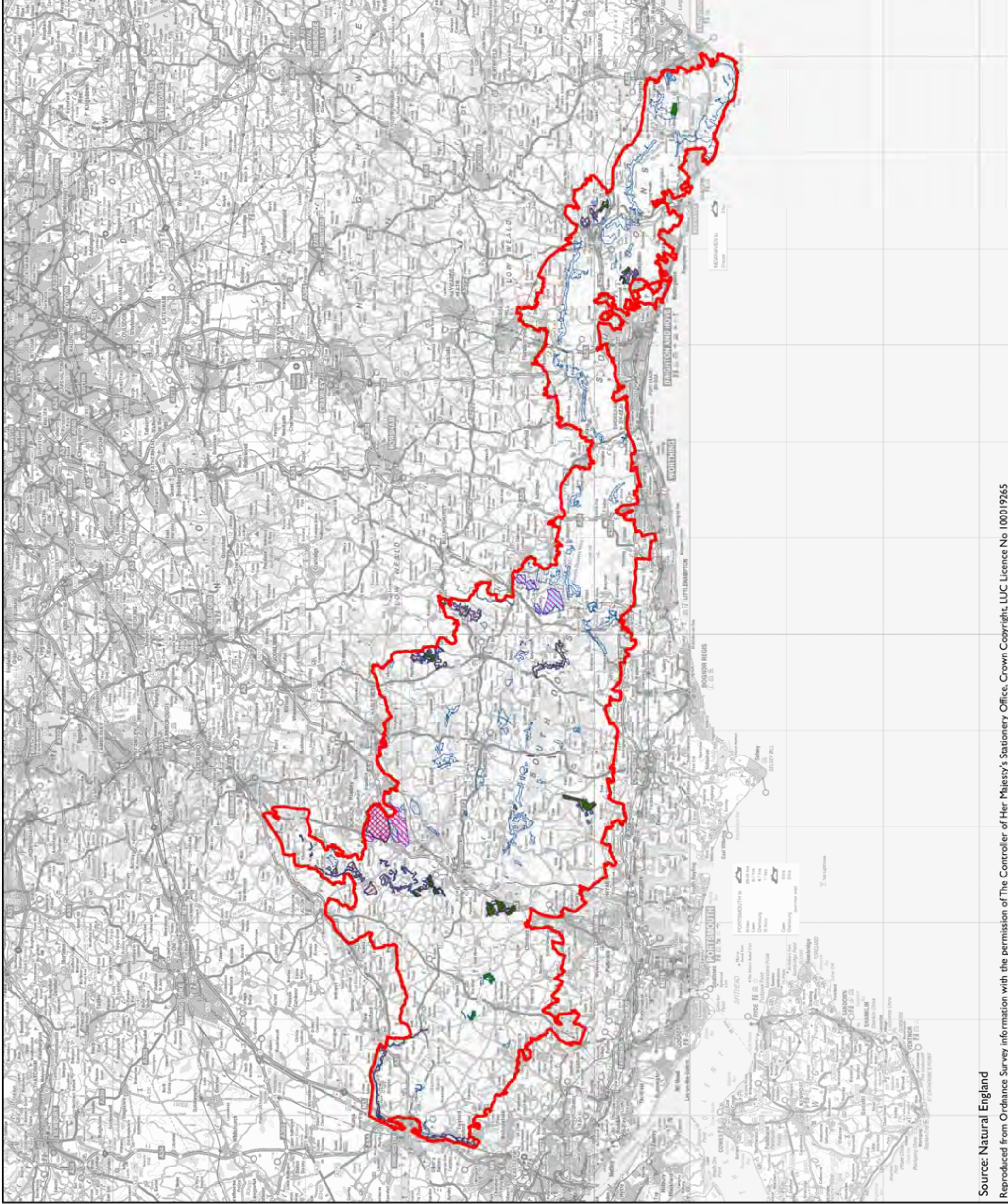


# South Downs Integrated Landscape Character Assessment (Updated)

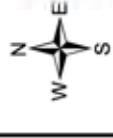
## Figure 5.2i: Statutory Nature Conservation Designations

### Key

-  South Downs National Park Boundary (confirmed 2009)
- Statutory Designations**
-  Sites of Special Scientific Interest
-  Special Areas of Conservation
-  Special Protection Areas
-  National Nature Reserves
-  RAMSAR Sites



Date Prepared: 22/09/2011



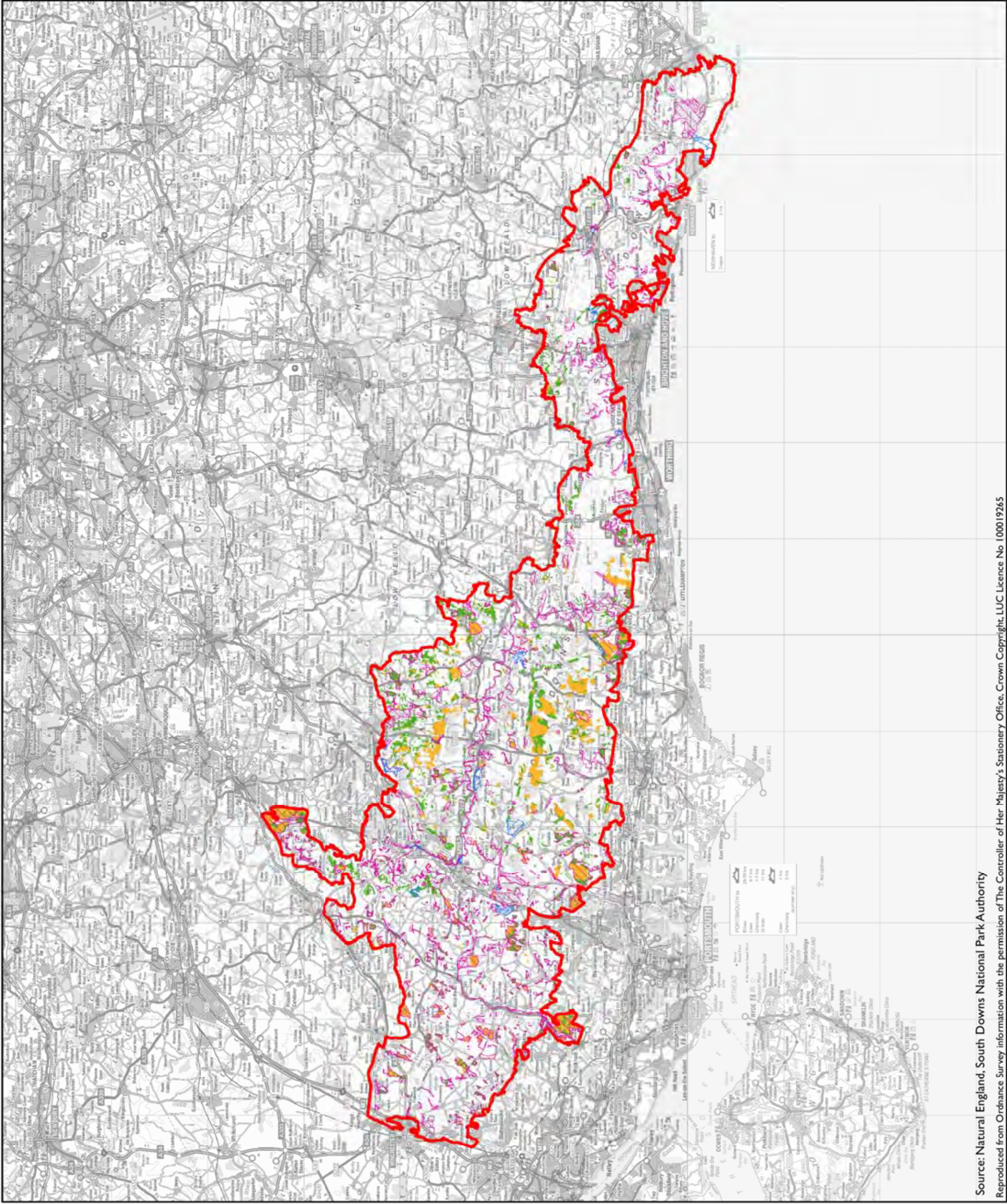


# South Downs Integrated Landscape Character Assessment (Updated)

## Figure 5.2ii: Non-Statutory Nature Conservation Designations

**Key**

-  South Downs National Park Boundary (confirmed 2009)
-  Local Nature Reserves
-  Sites of Nature Conservation Importance
-  Ancient Woodland
-  Ancient Semi-Natural Woodland
-  Plantations on Ancient Woodland Sites



Date Prepared: 22/09/2011

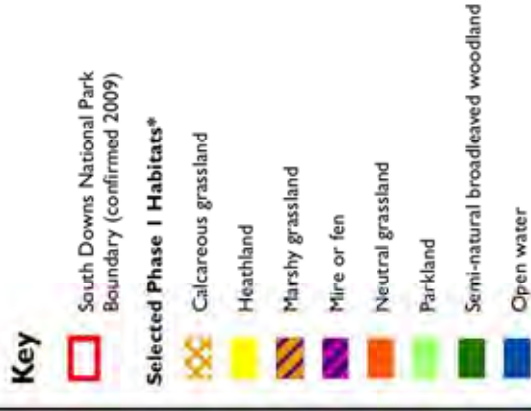






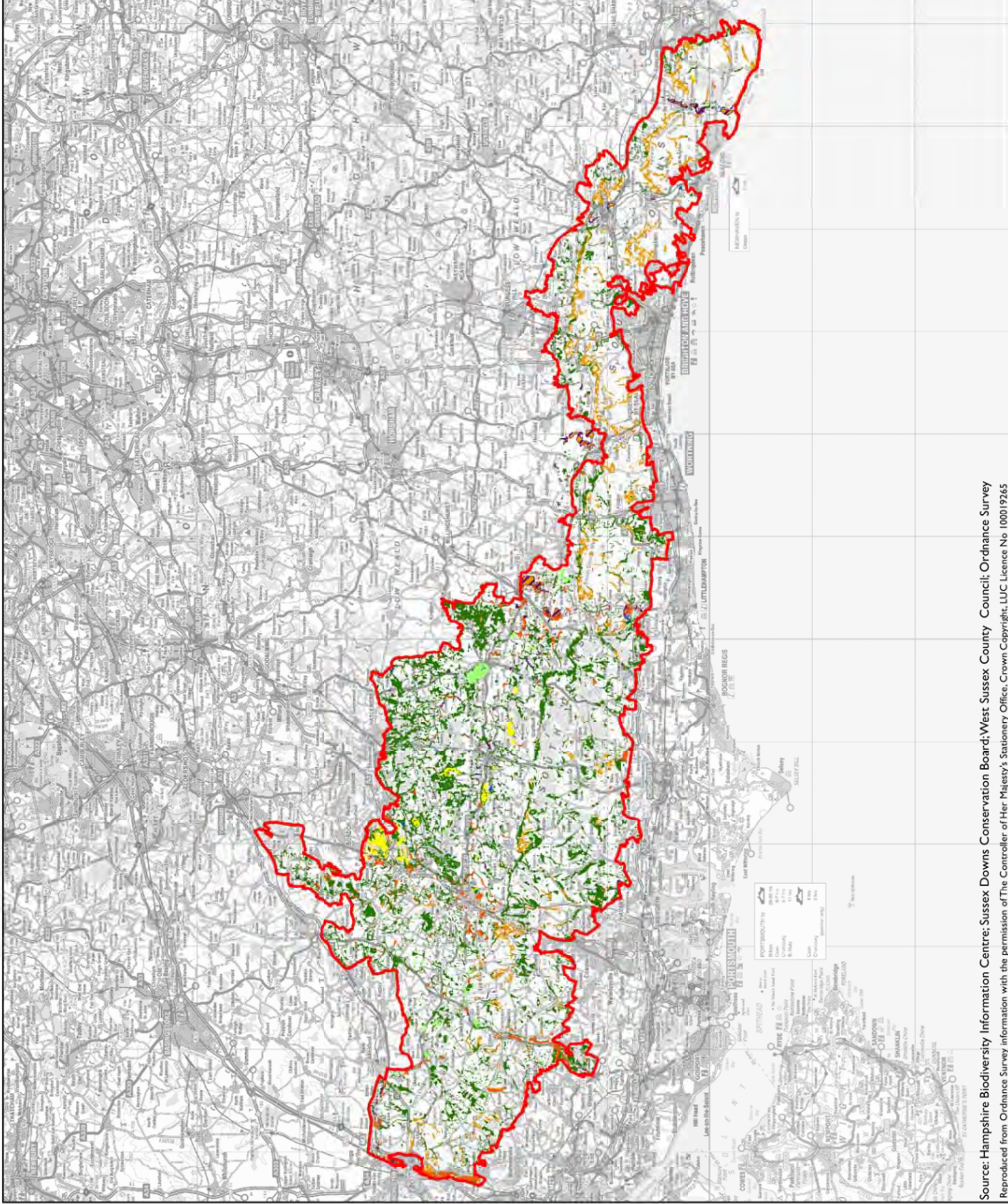
# South Downs Integrated Landscape Character Assessment

## Figure 5.3: Distribution of Select Phase I Habitat Types



\*This map shows Phase I habitat data cropped to the boundary relating to the South Downs National Park Designation Order, 2002. Data for additional areas within the confirmed South Downs National Park Boundary was not available at the time of updating this assessment.

Date Prepared: 15/09/2005  
Boundary updated: 22/09/2011





# South Downs Integrated Landscape Character Assessment (Updated)

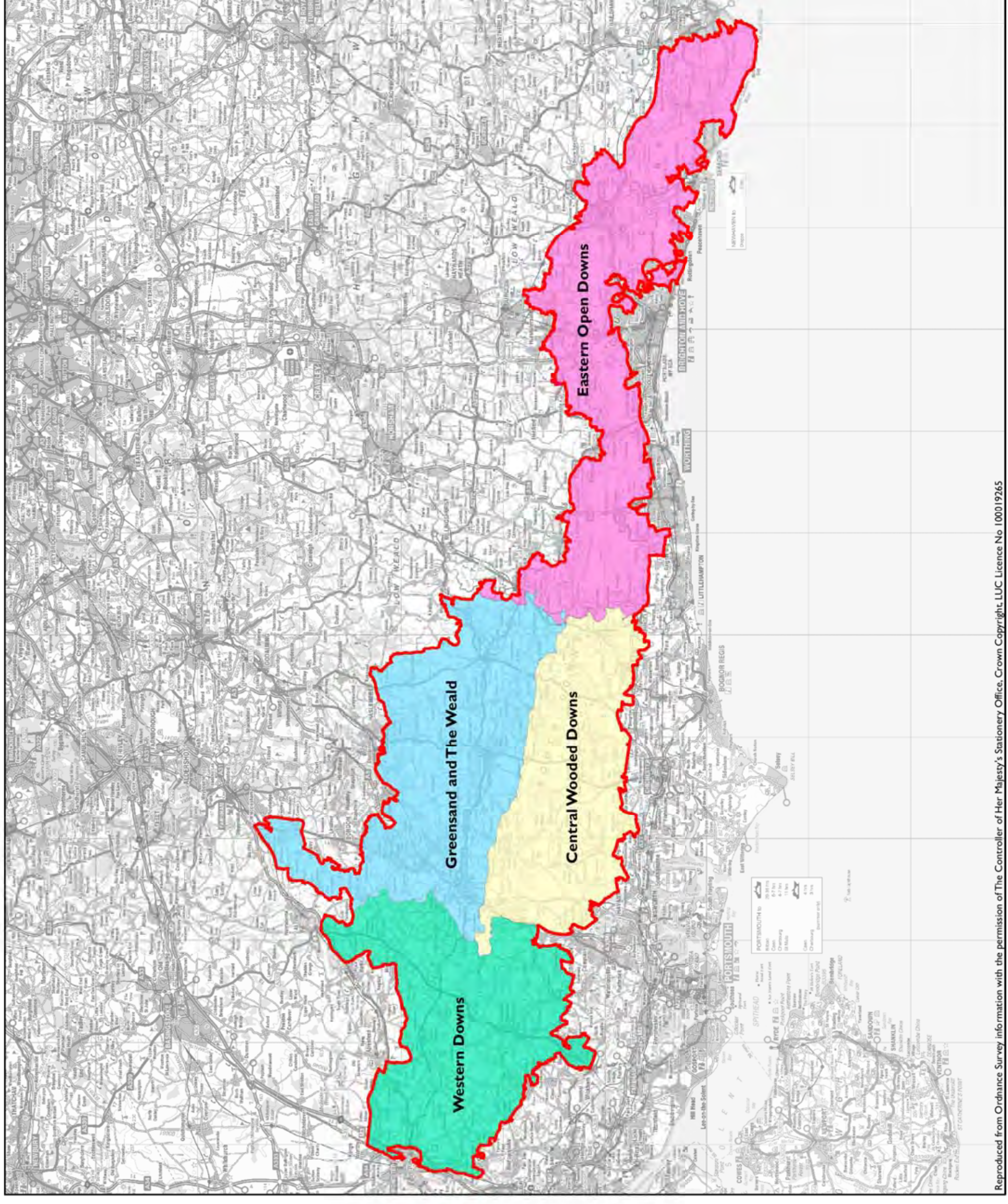
## Figure 6.1: Broad Regional Areas

**Key**

- South Downs National Park Boundary (confirmed 2009)
- Region**
- Central Wooded Downs
- Eastern Open Downs
- Greensand and The Weald
- Western Downs

Date Prepared: 22/09/2011

**LUC LAND USE CONSULTANTS**  
ENVIRONMENTAL PLANNING, DESIGN AND MANAGEMENT





# South Downs Integrated Landscape Character Assessment (Updated)

**Figure 6.7: Relative importance of cropping as a land use in the South Downs**

**Key**

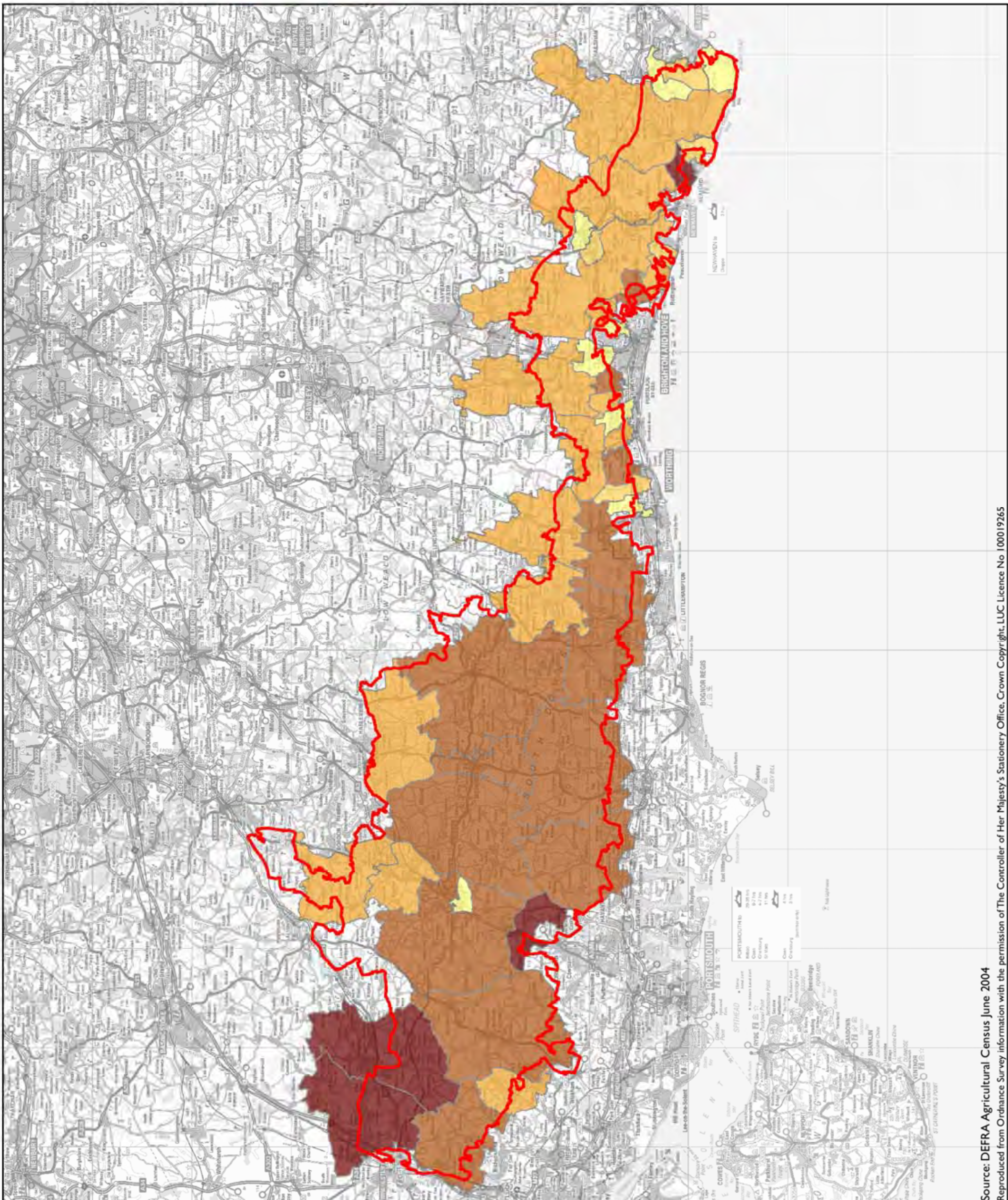
- South Downs National Park Boundary (confirmed 2009)

Cropped land as proportion of total crop and grass land

	0 - 5%
	>5 - 25%
	>25 - 50%
	>50 - 75%
	>75 - 86%

**Data analysed and mapped using**  
**Office of National Statistics**  
**Middle Layer Super Output Areas (MSOA)**

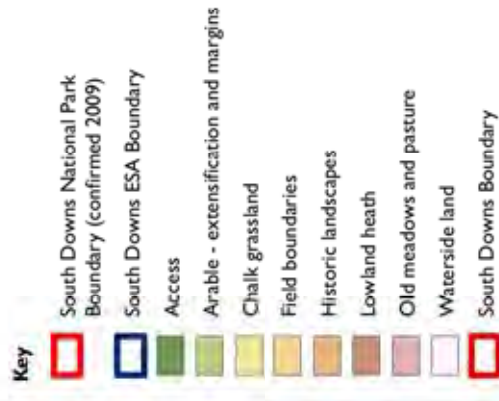
Date Prepared: 03/01/2006  
 Boundary updated: 22/09/2011



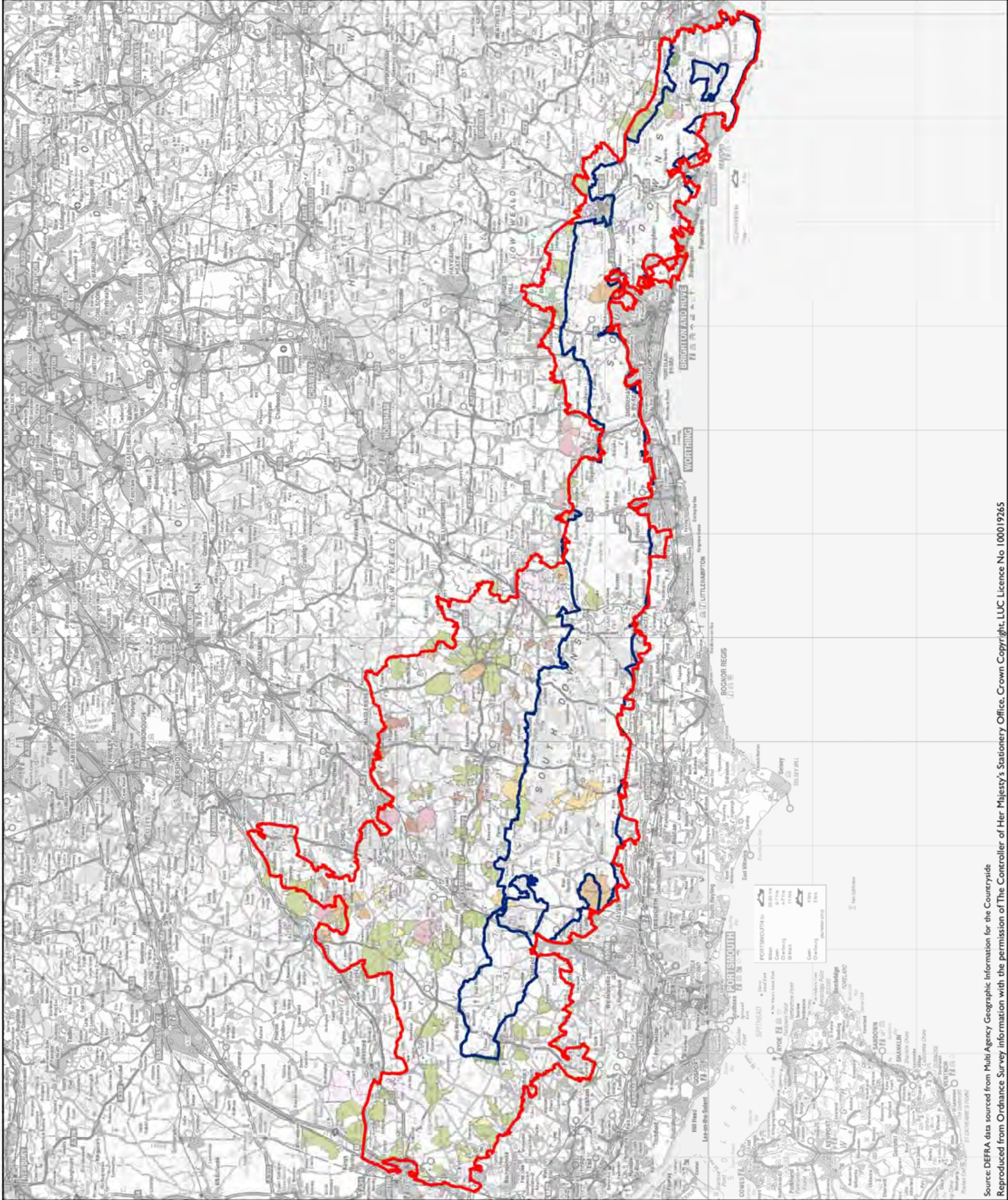
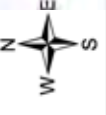


# South Downs Integrated Landscape Character Assessment (Updated)

## Figure 6.10: Countryside Stewardship Scheme (CSS) agreements in the South Downs



Date Prepared: 28/12/2005  
 Boundary updated: 22/09/2011





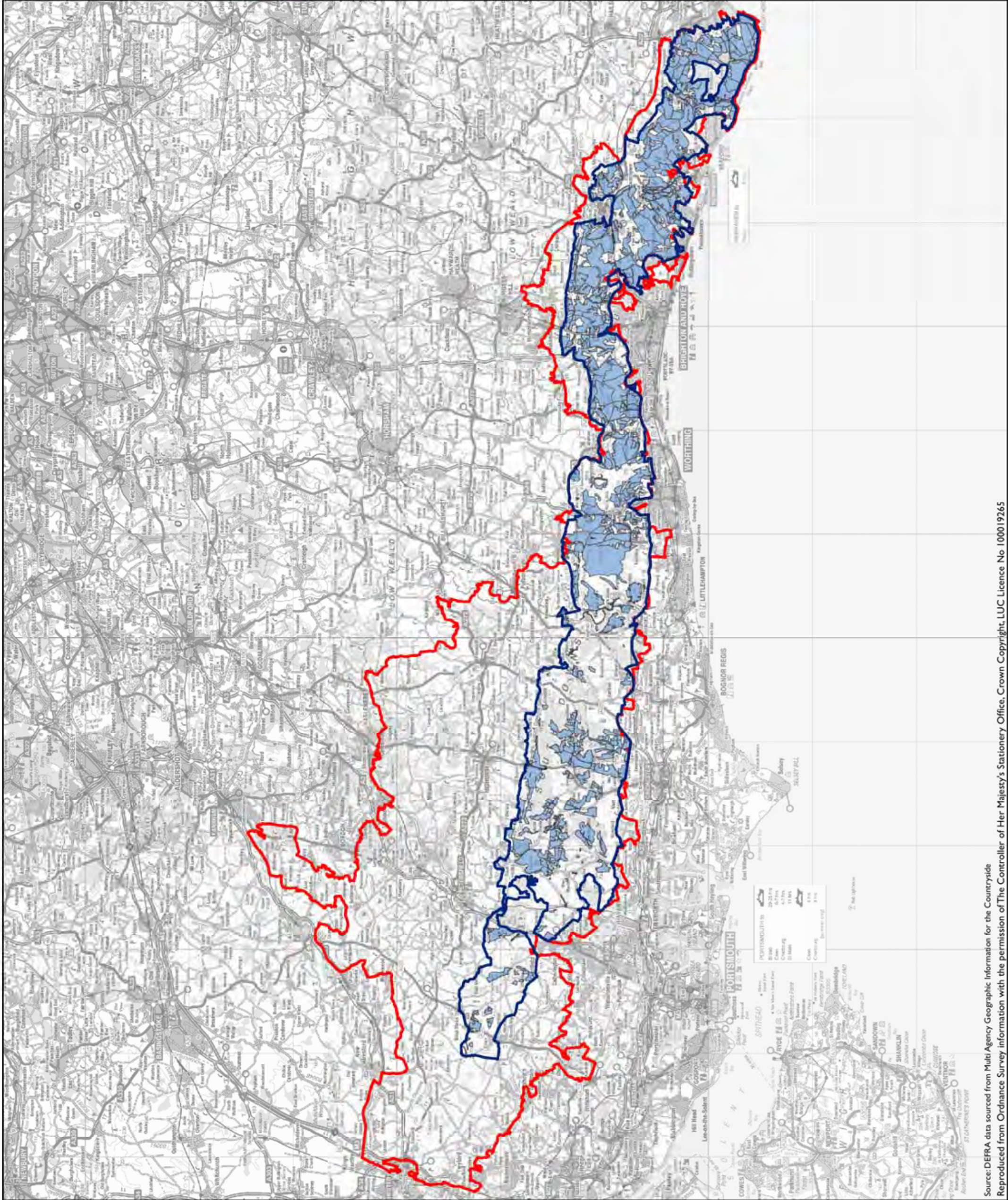


# South Downs Integrated Landscape Character Assessment (Updated)

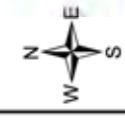
**Figure 6.11: Environmentally Sensitive Area (ESA) agreements in the South Downs**

**Key**

- South Downs National Park Boundary (confirmed 2009)
- South Downs ESA Boundary
- South Downs ESA Agreements



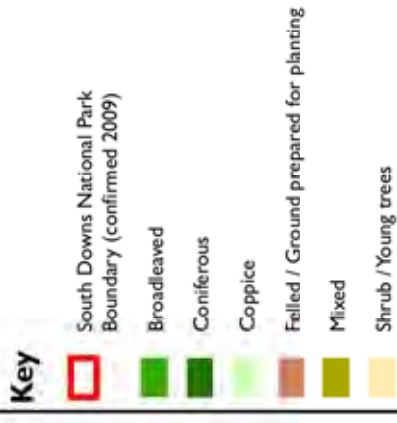
Date Prepared: 28/12/2005  
Boundary updated: 22/09/2011



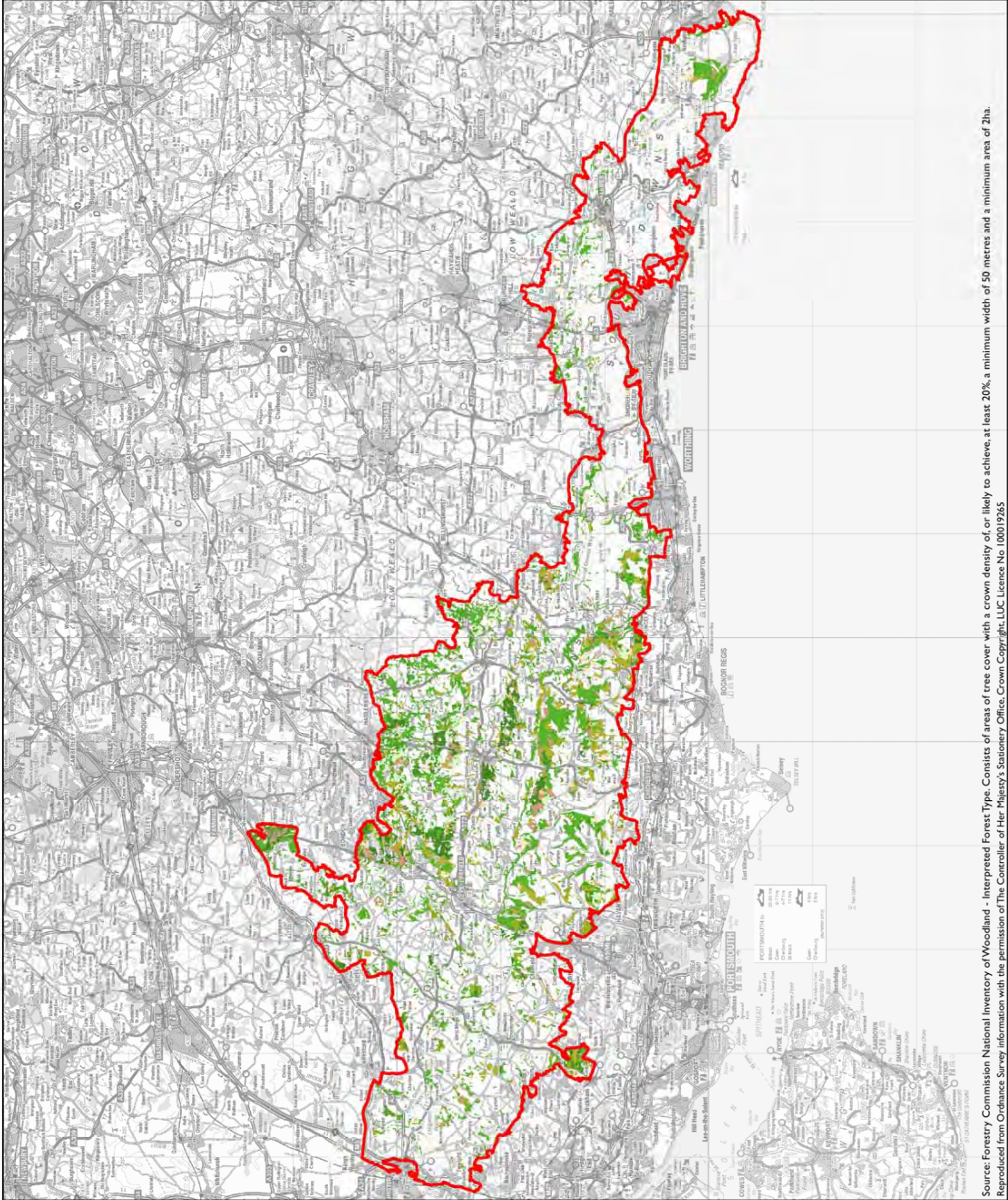
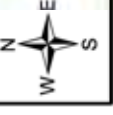


# South Downs Integrated Landscape Character Assessment (Updated)

**Figure 6.12: Woodland distribution (interpreted forest types) in the South Downs**



Date Prepared: 22/09/2011



Source: Forestry Commission National Inventory of Woodland - Interpreted Forest Type. Consists of areas of tree cover with a crown density of, or likely to achieve, at least 20%, a minimum width of 50 metres and a minimum area of 2ha. Reproduced from Ordnance Survey information with the permission of The Controller of Her Majesty's Stationery Office. Crown Copyright. LUC Licence No 100019265

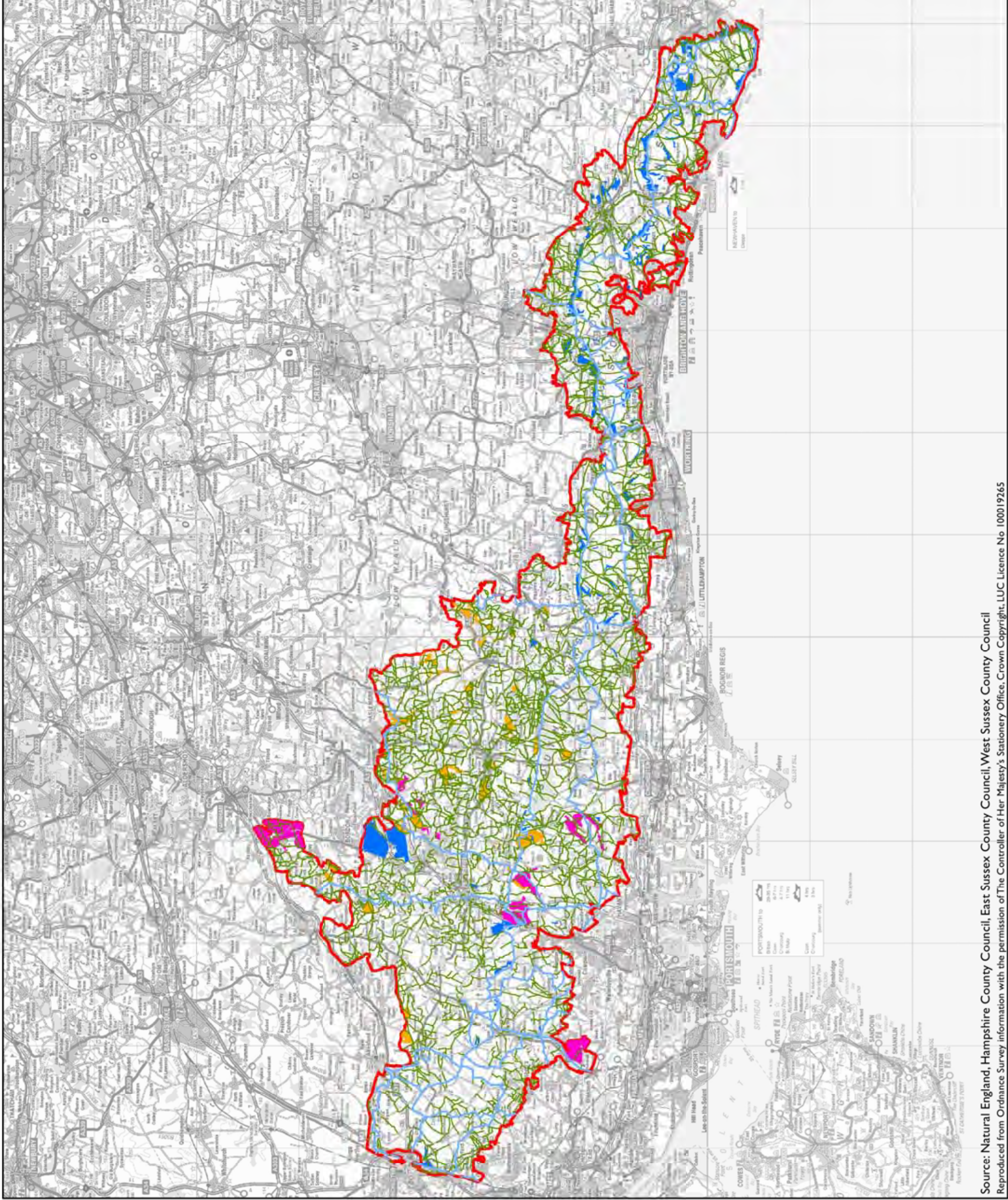


# South Downs Integrated Landscape Character Assessment (Updated)

## Figure 6.13: Countryside Access

- Key**
- South Downs National Park Boundary (confirmed 2009)
  - Long Distance Paths
  - Other Public Rights of Way
  - Open Access Land
  - Section 16 Land
  - Registered Common Land

Date Prepared: 22/09/2011





# South Downs Integrated Landscape Character Assessment (Updated)

## Figure 7.1: Urban and Rural Census Output Areas

### Key

- South Downs National Park Boundary (confirmed 2009)
- Hamlet & Isolated - Less Sparse
- Town & Fringe - Less Sparse
- Urban > 10K - Less Sparse
- Village - Less Sparse

### Data analysed and mapped using Office of National Statistics Output Areas

Date Prepared: 22/09/2011

