

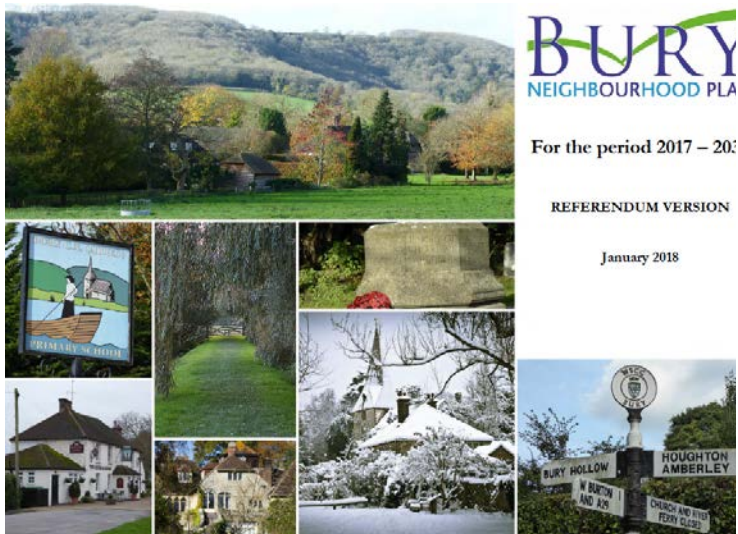
# Planning Committee Meeting

## 12 April 2018

### Agenda Item 13

### Quarterly Neighbourhood Planning Updates





## PLUMPTON PARISH NEIGHBOURHOOD PLAN 2017-2030

Referendum Version



January 2018



PATCHING PARISH COUNCIL

JANUARY 2018  
Prepared in accordance with the Localism Act 2011 and the Neighbourhood Planning (General) Regulations 2012

Three more Made NDPs in the SDNP. This brings the total to 26

# NDP Updates

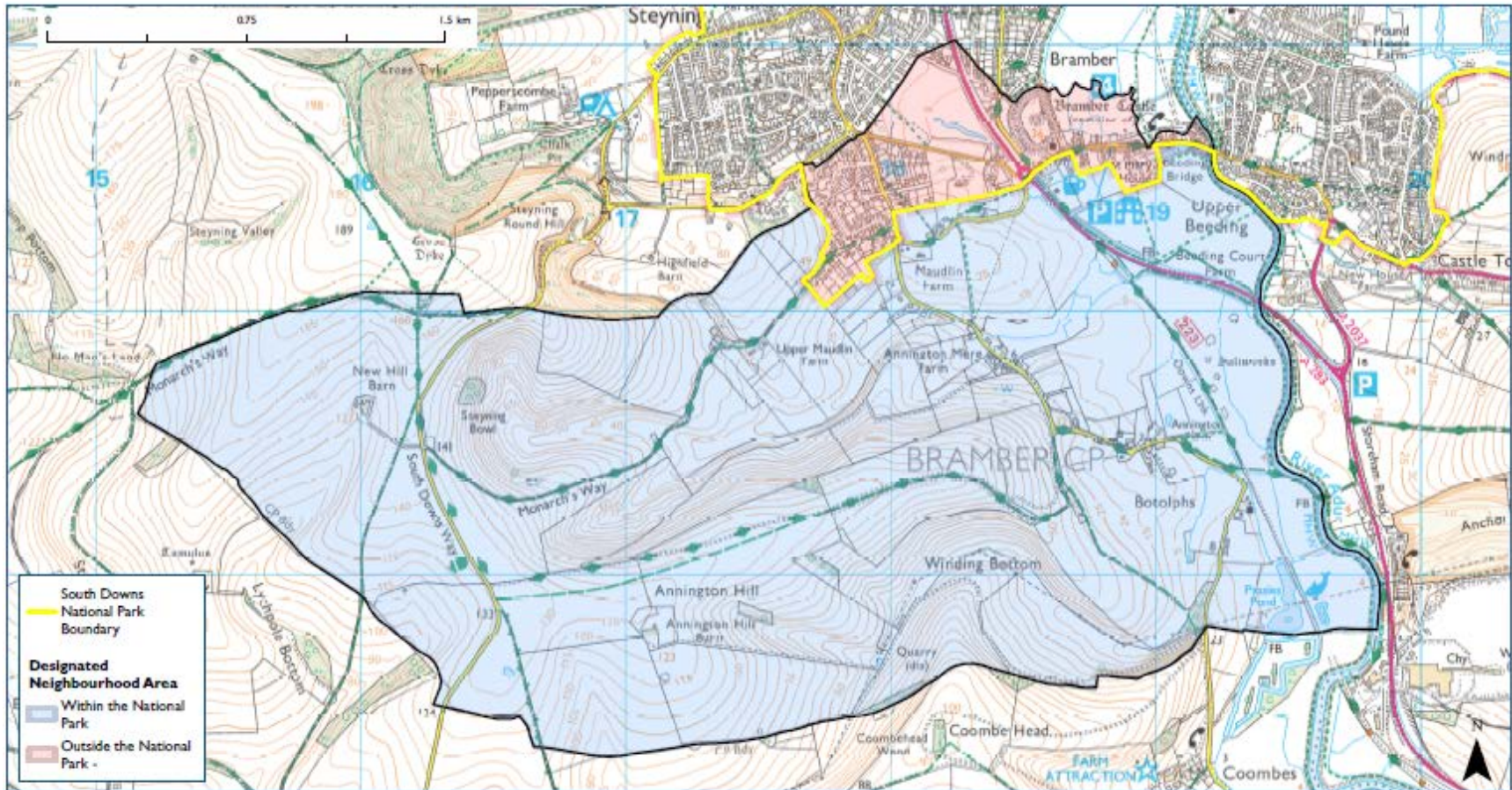
- Consultation has ended on the inclusion of the new site in the Petworth NDP
- Lewes NDP approved for Submission by Town Council on 29<sup>th</sup> March 2018
- Stedham with Iping NDP Pre-submission consultation is running from Thursday 5th April 2018 until 17th May 2018
- Modifications to Findon NDP to be submitted shortly



# New NDP Designations - Bramber

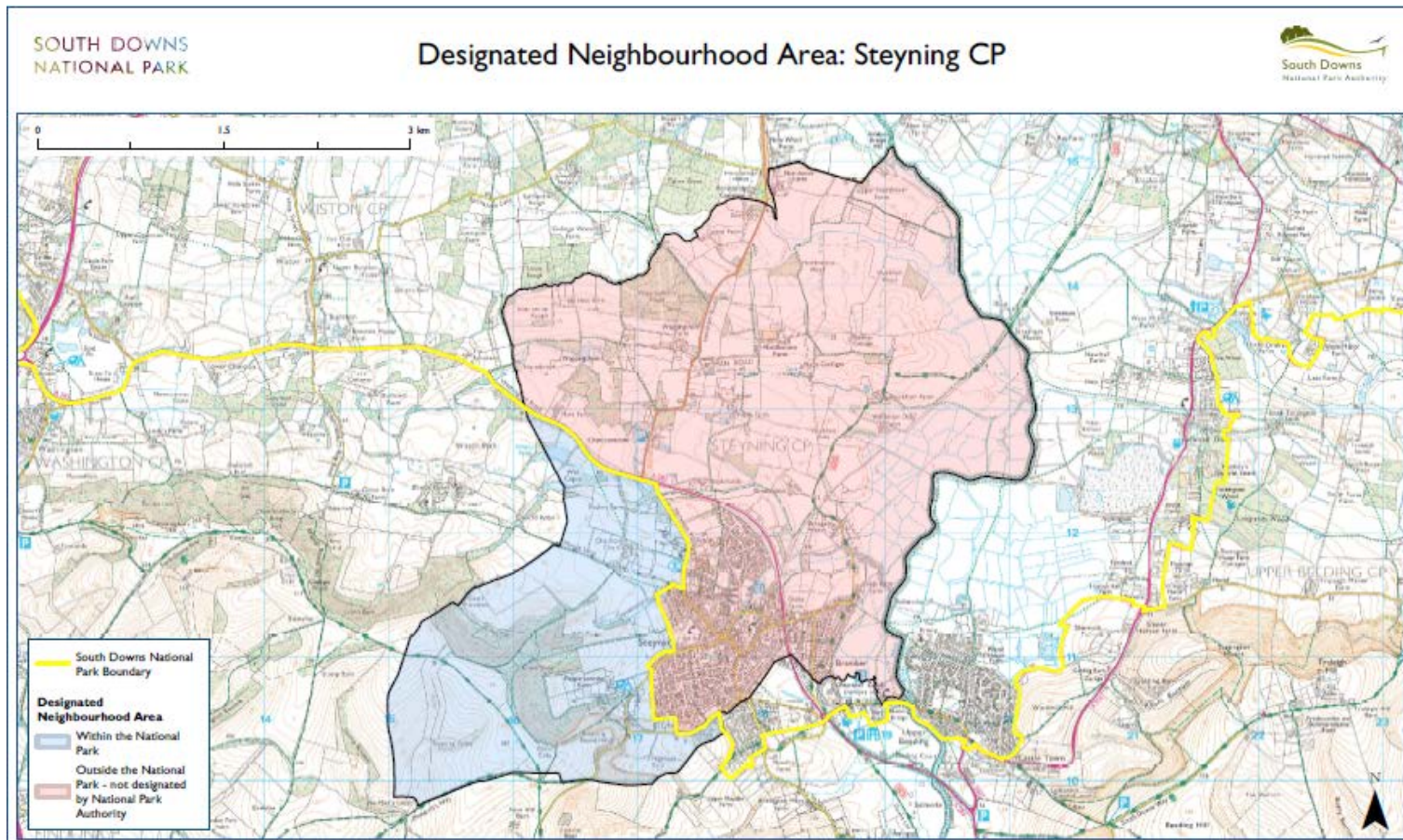
SOUTH DOWNS  
NATIONAL PARK

Designated Neighbourhood Area: Bramber CP





# New NDP Designations - Steyning



Total of 52 Designated NDP areas in SDNP

# Recommendation

The Committee is recommended to note the progress to date on the preparation of Neighbourhood Development Plans across the National Park.

