

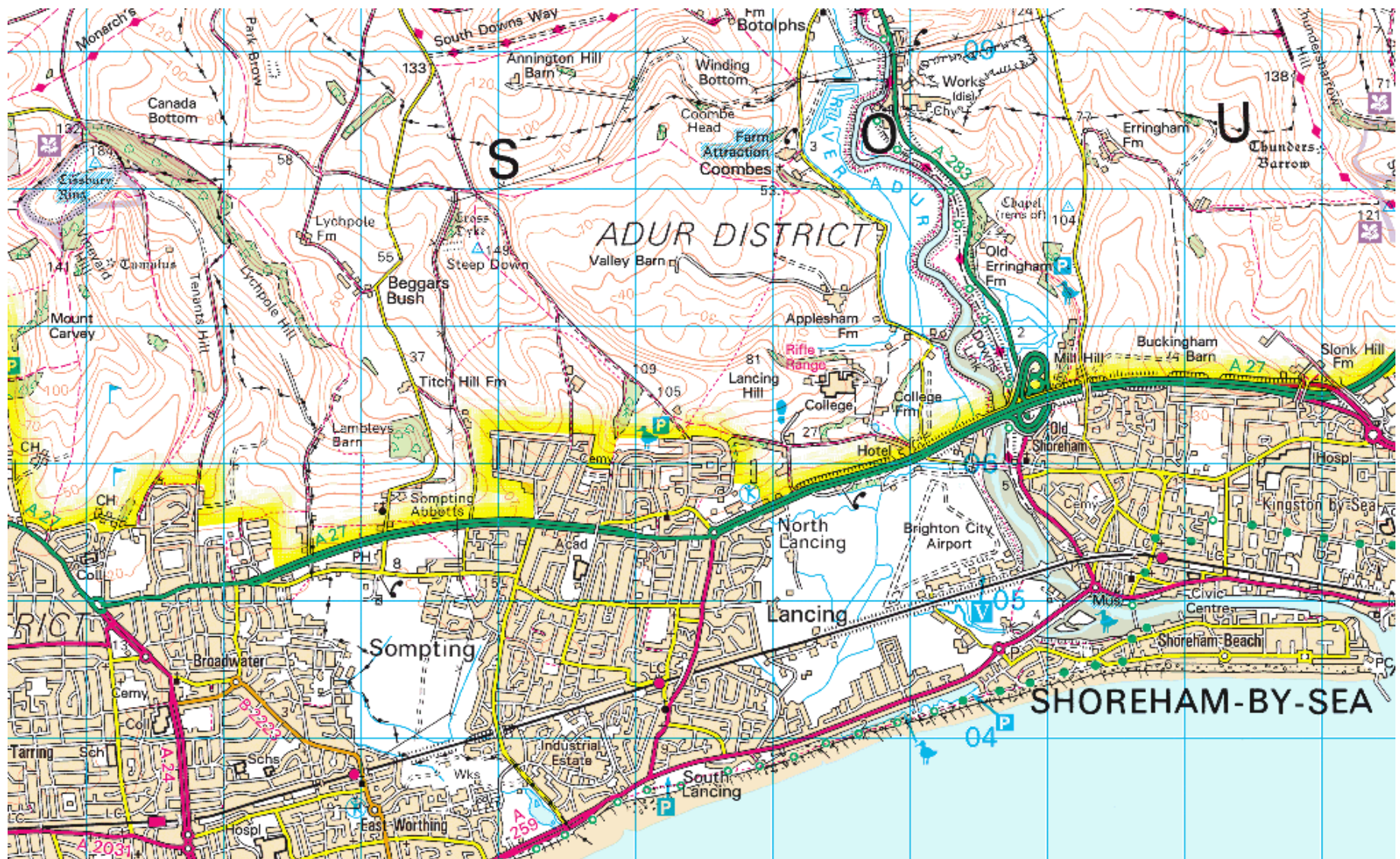
# Planning Committee Meeting

8 March 2018

## Agenda Items 7 & 8

SDNP/17/03985/ADJAUT and SDNP/17/04761/ADJAUT  
Land West of New Monks Farm and Shoreham Airport,  
Lancing











# VIEW FROM MILL HILL

SHOREHAM  
AIRPORT

NEW  
MONKS  
FARM

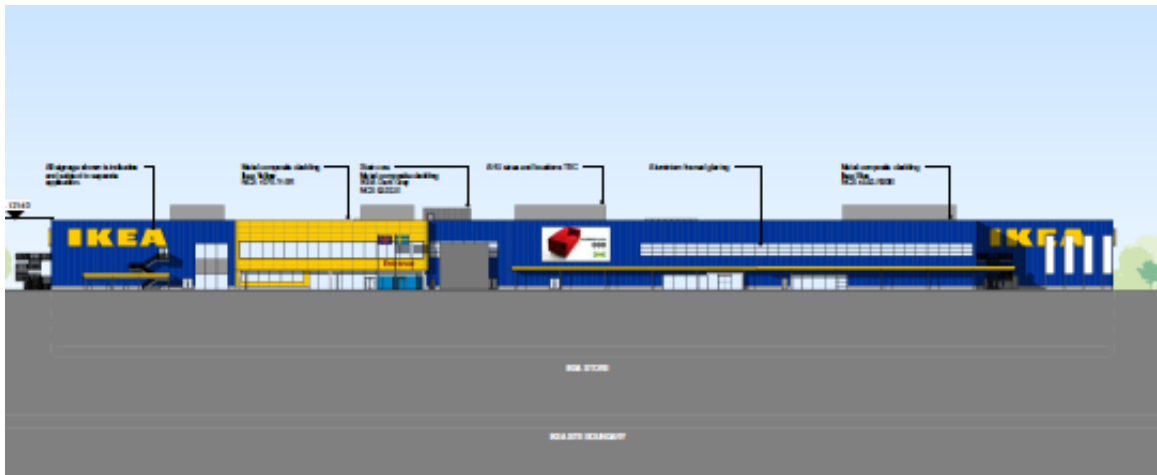




# VIEW FROM HOE COURT ROAD

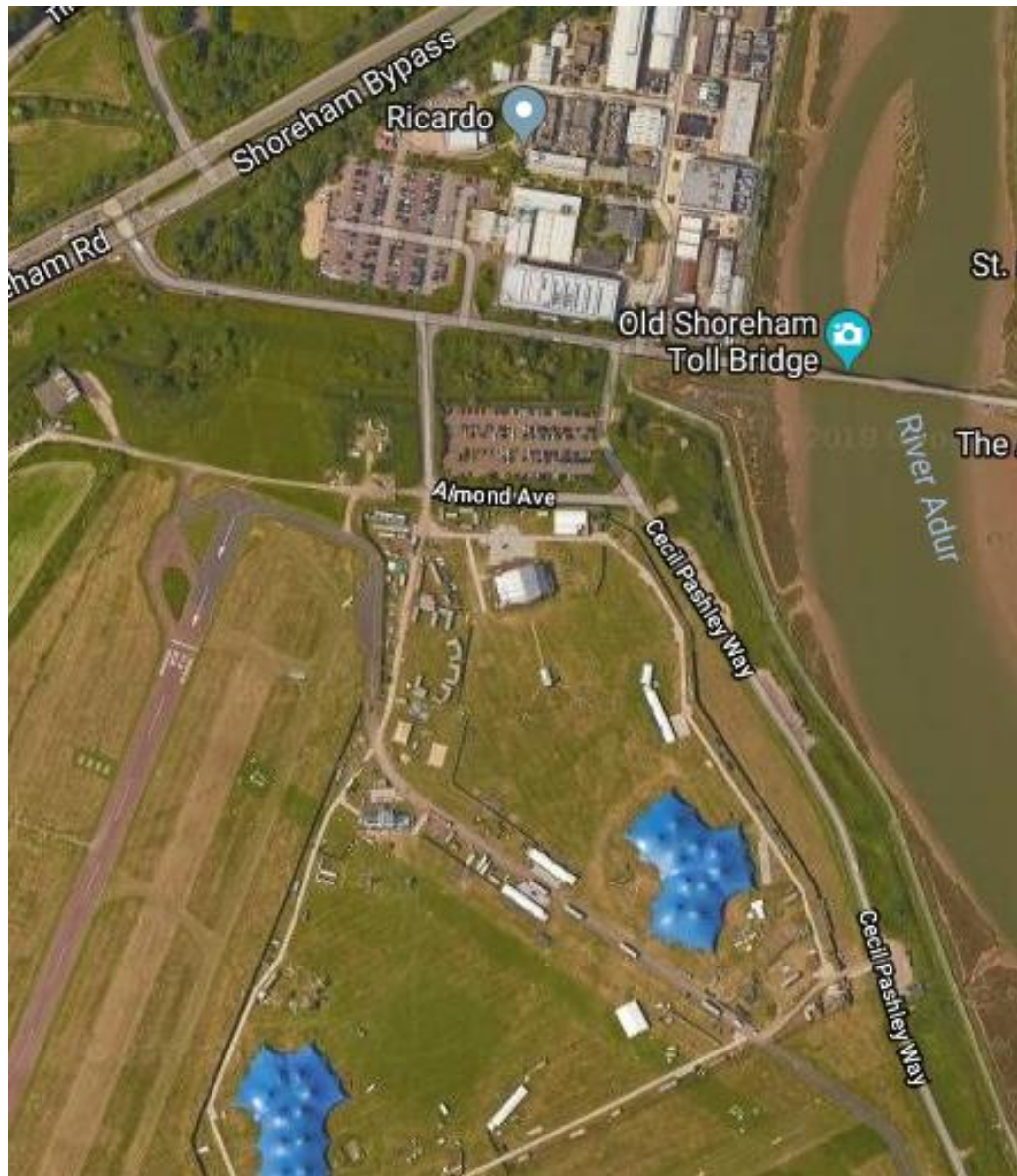


# NEW MONKS FARM





# SHOREHAM AIRPORT









# Recommendation

## ITEM 7 – SDNP/I 7/03985/ADJAUT - NEW MONKS FARM

**OBJECTION** on grounds of significant adverse impact on landscape character, impact on views to and from the SDNP and harm to dark night skies

**The Committee is recommended to agree the SDNPA response to Adur and Worthing Councils, objecting to the proposed development.**





# Recommendation

## ITEM 8 – SDNP/17/04761/ADJAUT - SHOREHAM AIRPORT

**HOLDING OBJECTION** on grounds of significant adverse impact on landscape character, impact on views to and from the SDNP and harm to dark night skies, based on current plans, but note commitment to continue work to resolve concerns

1. **The Committee is recommended to agree the SDNPA response to Adur and Worthing Councils, providing a holding objection to the proposed development.**
2. **That authority be delegated to the Director of Planning in consultation with the Chair of the Planning Committee to agree the final submission to Adur and Worthing Councils.**

