

Planning Committee Meeting

18 January 2018

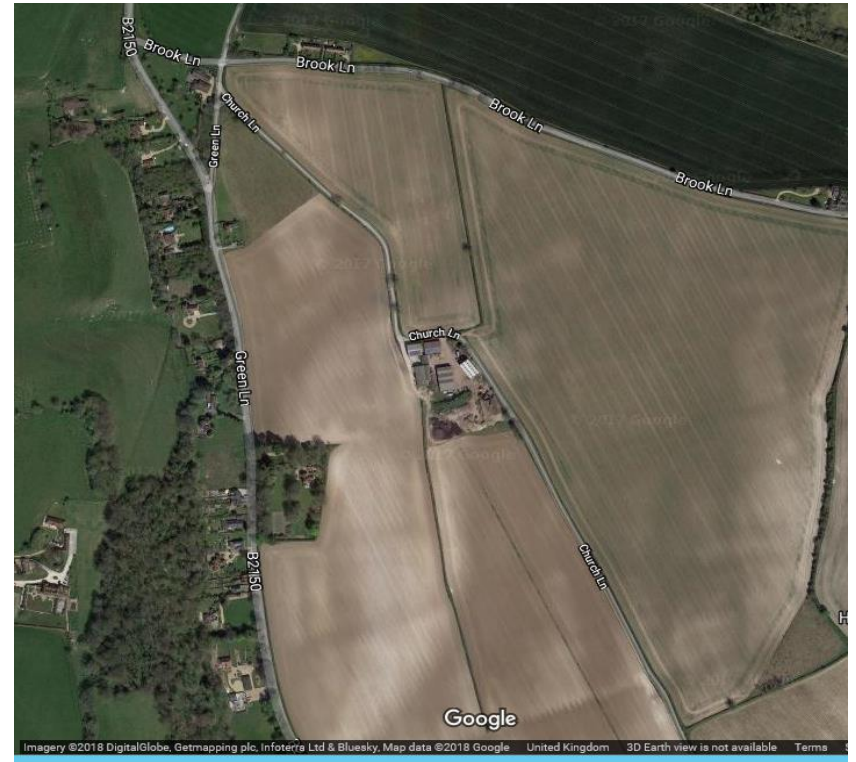
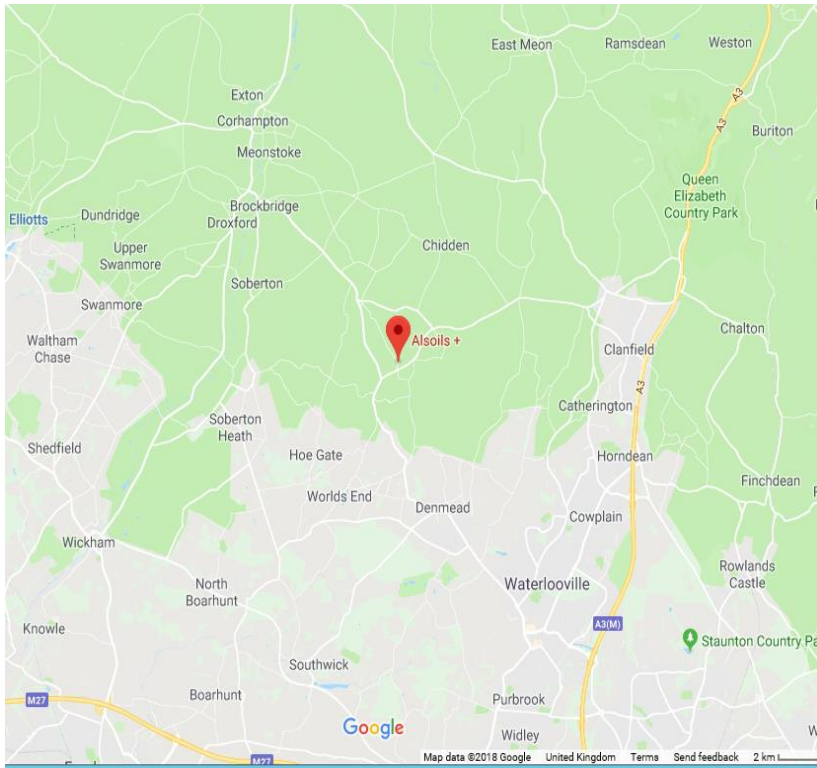
Agenda Item 10

SDNP/17/04623/FUL

The Lambing Yard, Church Lane, Hambledon, PO7 4RT



Aerial View



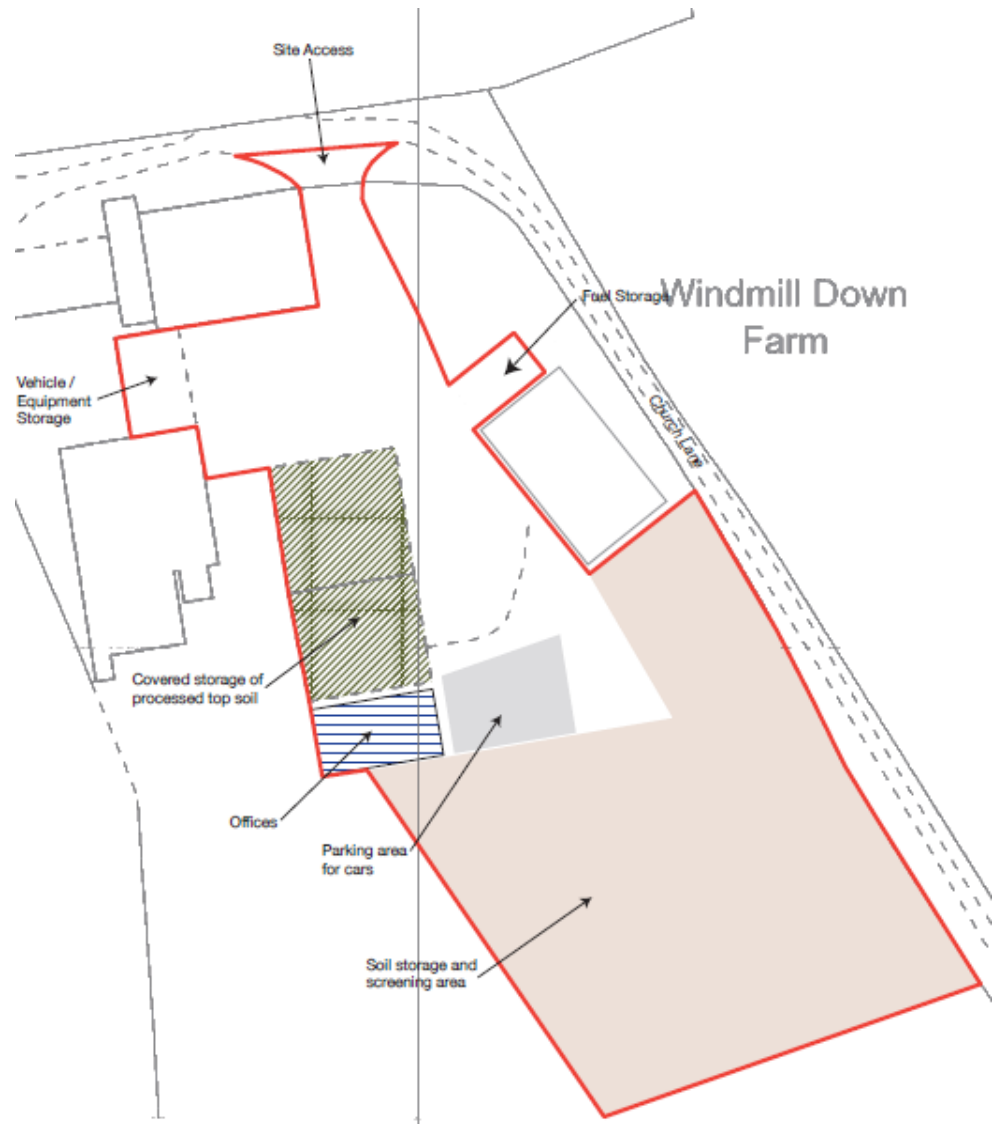
Site Location

Site Location Map

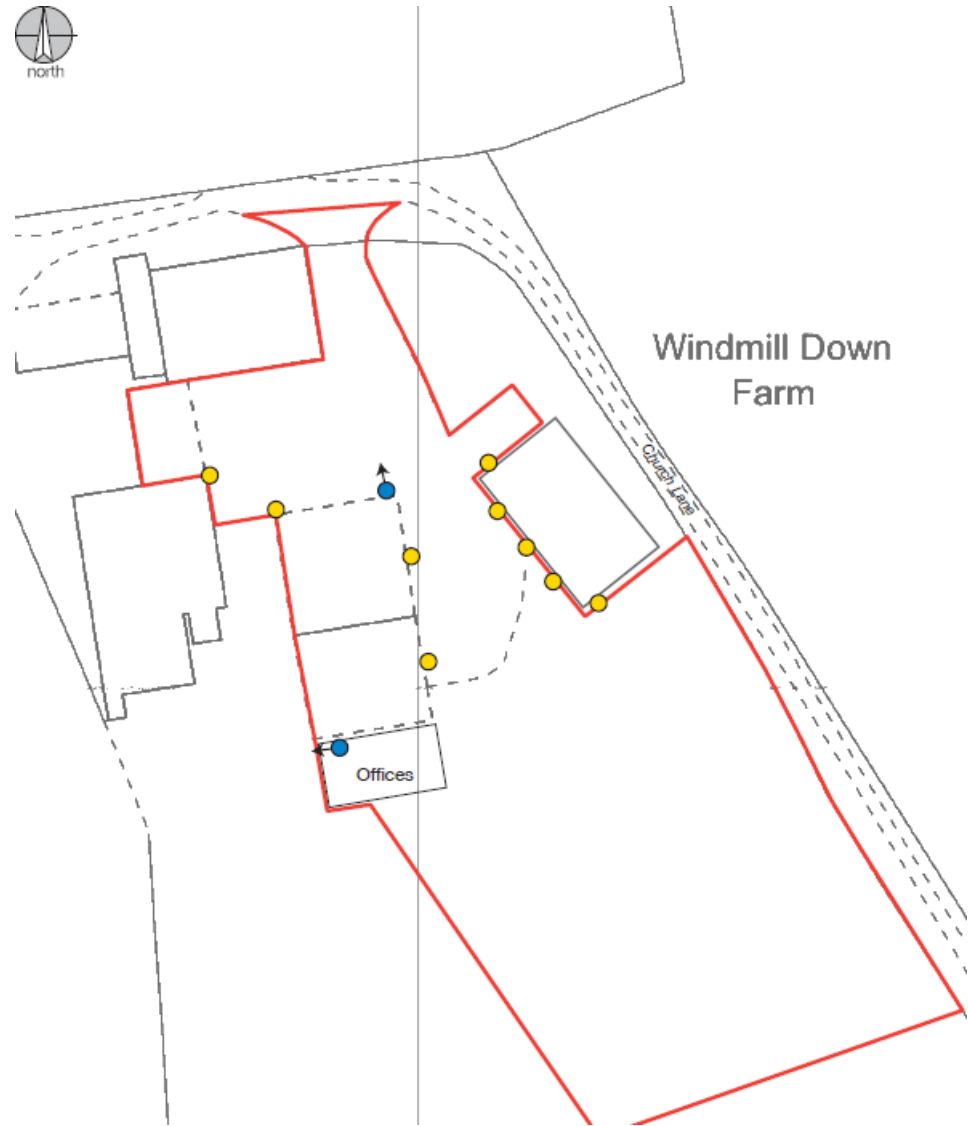


This map is reproduced from Ordnance Survey material with the permission of Ordnance Survey on behalf of the Controller of Her Majesty's Stationery Office Crown copyright. Unauthorised reproduction infringes Crown copyright and may lead to prosecution or civil proceedings. South Downs National Park Authority, Licence No. 100050083 (2012) (Not to scale).

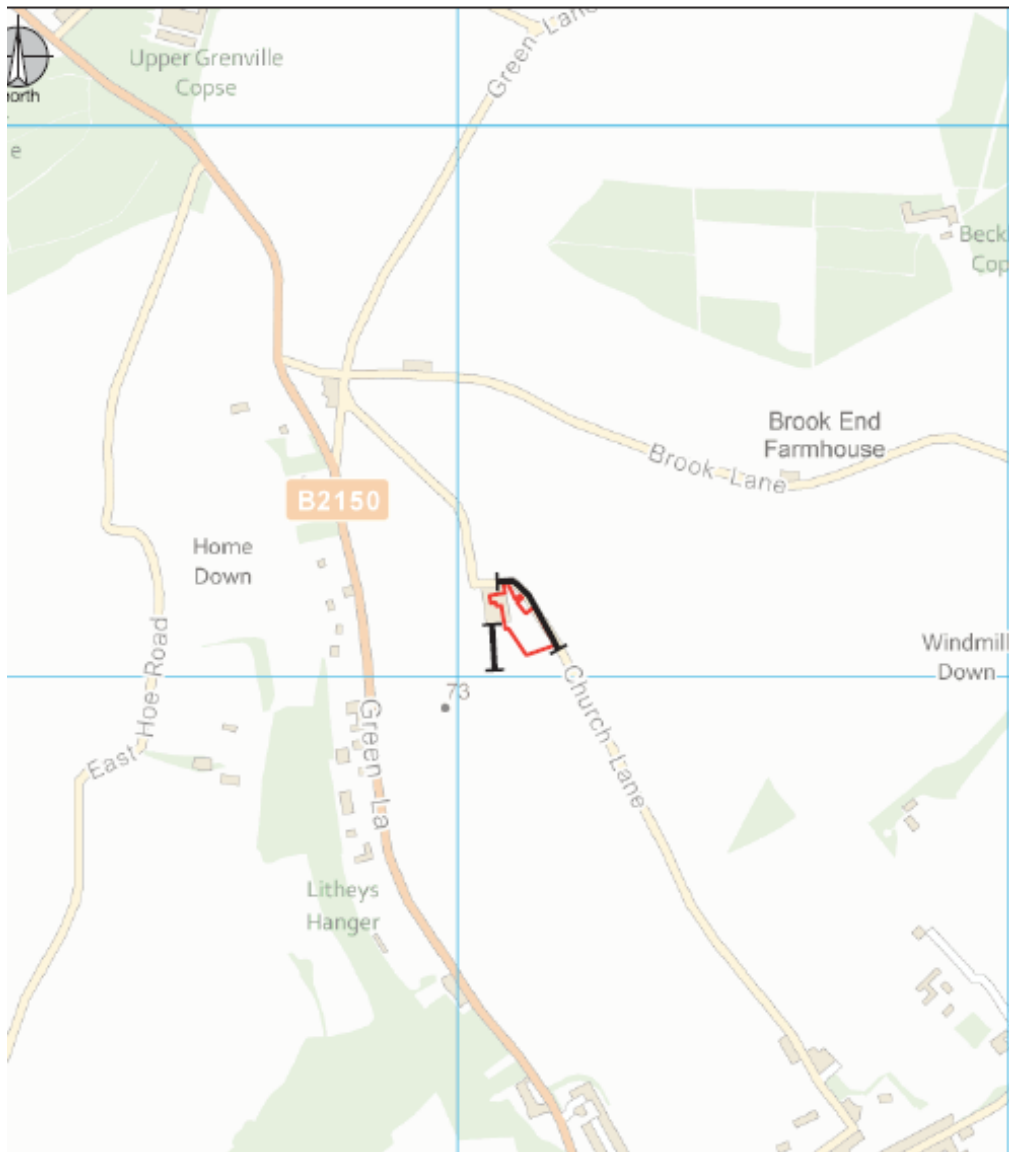
Site Layout



CCTV & Lighting Plan



Hedgerow protection plan



Photographs on on-site buildings



Photograph to show the vehicle / equipment store



Photograph to show the fuel store (adjacent to farm's barn)



Photograph of Landscaping Scheme



Key Considerations

- Planning policy (inc. NPPW Waste)
- Principle of development
- Location and Need
- Farm Diversification
- Landscape and Tranquillity
- Transport Impact



Key Considerations (2)

- Impact on the amenity of neighbouring properties
- Operational Issues
- Protection of Water Resources
- Noise and Vibration



Recommendation

It is recommended that planning permission be granted subject to conditions set out in Paragraph 10.1 of the report.



Agenda Item 9 Report PC55/12 Appendix 3 – Landscaping Plan

