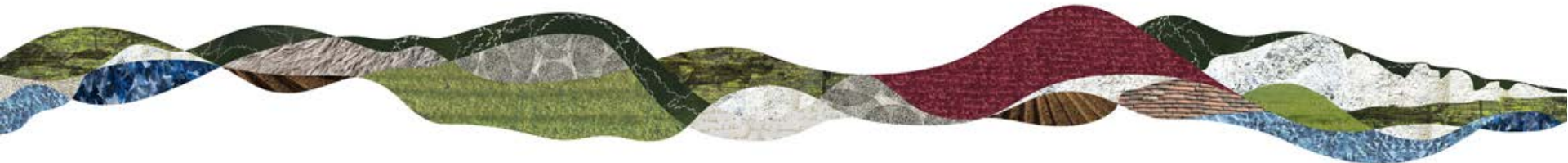


Planning Committee Meeting

14th December 2017

Agenda Item 9

Half Acre, Hawkley Road, Liss, Hampshire, GU33 6JS
SDNP/17/00873/CND: Variation of conditions 1 & 2 of
SDNP/13/04731/CND to make the temporary permission
permanent and SDNP/17/01406/FUL: The construction of a
utility dayroom.



Introduction

Considerations

- Planning policy
- Need for Gypsy and Traveller pitches and the personal circumstances of the Burrows family
- Landscape and visual impact on the National Park
- Highways
- Ecology
- Surface water and drainage
- Impact on the amenity of neighbouring properties



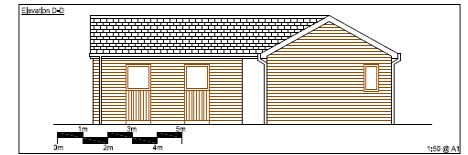
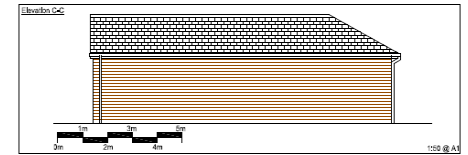
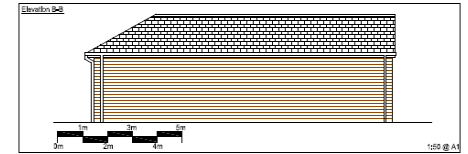
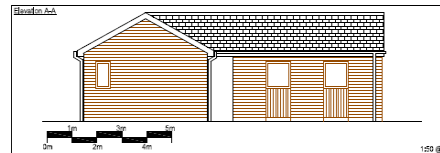
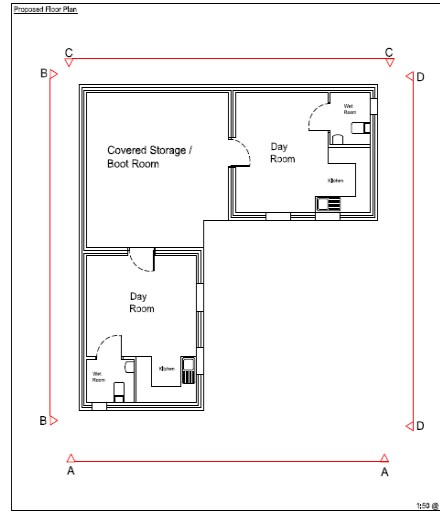
The site



The site



Site Plan & Elevations



Materials Details

WALLS: Gully base walls with horizontal timber cladding externally. Timber cladding below windows to be fixed vertically to minimise door construction. Cladding to be painted dark brown.

FLOOR: Cement fibre slates

WINDOWS & DOORS: Dark brown UPVC double glazed windows. Dark brown solid timber doors.

Note: For proposed location of proposed day room building refer to TDA Design Associates drawing no. TDA/21/01

All dimensions shown in metres unless stated otherwise

104	CHUCKY LIDB	
105	LIAM LIDB	
106	PAUL LIDB	
107	THEYA LIDB	
108	MS PENNY AMER	
109	104	AS BENCH
110	105	106
111	107	108
112	109	110
113	111	112
114	113	114
115	115	116
116	117	118
117	119	120
118	121	122
119	123	124
120	125	126
121	127	128
122	129	130
123	131	132
124	133	134
125	135	136
126	137	138
127	139	140
128	141	142
129	143	144
130	145	146
131	147	148
132	149	150
133	151	152
134	153	154
135	155	156
136	157	158
137	159	160
138	161	162
139	163	164
140	165	166
141	167	168
142	169	170
143	171	172
144	173	174
145	175	176
146	177	178
147	179	180
148	181	182
149	183	184
150	185	186
151	187	188
152	189	190
153	191	192
154	193	194
155	195	196
156	197	198
157	199	200
158	201	202
159	203	204
160	205	206
161	207	208
162	209	210
163	211	212
164	213	214
165	215	216
166	217	218
167	219	220
168	221	222
169	223	224
170	225	226
171	227	228
172	229	230
173	231	232
174	233	234
175	235	236
176	237	238
177	239	240
178	241	242
179	243	244
180	245	246
181	247	248
182	249	250
183	251	252
184	253	254
185	255	256
186	257	258
187	259	260
188	261	262
189	263	264
190	265	266
191	267	268
192	269	270
193	271	272
194	273	274
195	275	276
196	277	278
197	279	280
198	281	282
199	283	284
200	285	286
201	287	288
202	289	290
203	291	292
204	293	294
205	295	296
206	297	298
207	299	300
208	301	302
209	303	304
210	305	306
211	307	308
212	309	310
213	311	312
214	313	314
215	315	316
216	317	318
217	319	320
218	321	322
219	323	324
220	325	326
221	327	328
222	329	330
223	331	332
224	333	334
225	335	336
226	337	338
227	339	340
228	341	342
229	343	344
230	345	346
231	347	348
232	349	350
233	351	352
234	353	354
235	355	356
236	357	358
237	359	360
238	361	362
239	363	364
240	365	366
241	367	368
242	369	370
243	371	372
244	373	374
245	375	376
246	377	378
247	379	380
248	381	382
249	383	384
250	385	386
251	387	388
252	389	390
253	391	392
254	393	394
255	395	396
256	397	398
257	399	400
258	401	402
259	403	404
260	405	406
261	407	408
262	409	410
263	411	412
264	413	414
265	415	416
266	417	418
267	419	420
268	421	422
269	423	424
270	425	426
271	427	428
272	429	430
273	431	432
274	433	434
275	435	436
276	437	438
277	439	440
278	441	442
279	443	444
280	445	446
281	447	448
282	449	450
283	451	452
284	453	454
285	455	456
286	457	458
287	459	460
288	461	462
289	463	464
290	465	466
291	467	468
292	469	470
293	471	472
294	473	474
295	475	476
296	477	478
297	479	480
298	481	482
299	483	484
300	485	486
301	487	488
302	489	490
303	491	492
304	493	494
305	495	496
306	497	498
307	499	500
308	501	502
309	503	504
310	505	506
311	507	508
312	509	510
313	511	512
314	513	514
315	515	516
316	517	518
317	519	520
318	521	522
319	523	524
320	525	526
321	527	528
322	529	530
323	531	532
324	533	534
325	535	536
326	537	538
327	539	540
328	541	542
329	543	544
330	545	546
331	547	548
332	549	550
333	551	552
334	553	554
335	555	556
336	557	558
337	559	560
338	561	562
339	563	564
340	565	566
341	567	568
342	569	570
343	571	572
344	573	574
345	575	576
346	577	578
347	579	580
348	581	582
349	583	584
350	585	586
351	587	588
352	589	590
353	591	592
354	593	594
355	595	596
356	597	598
357	599	600
358	601	602
359	603	604
360	605	606
361	607	608
362	609	610
363	611	612
364	613	614
365	615	616
366	617	618
367	619	620
368	621	622
369	623	624
370	625	626
371	627	628
372	629	630
373	631	632
374	633	634
375	635	636
376	637	638
377	639	640
378	641	642
379	643	644
380	645	646
381	647	648
382	649	650
383	651	652
384	653	654
385	655	656
386	657	658
387	659	660
388	661	662
389	663	664
390	665	666
391	667	668
392	669	670
393	671	672
394	673	674
395	675	676
396	677	678
397	679	680
398	681	682
399	683	684
400	685	686
401	687	688
402	689	690
403	691	692
404	693	694
405	695	696
406	697	698
407	699	700
408	701	702
409	703	704
410	705	706
411	707	708
412	709	710
413	711	712
414	713	714
415	715	716
416	717	718
417	719	720
418	721	722
419	723	724
420	725	726
421	727	728
422	729	730
423	731	732
424	733	734
425	735	736
426	737	738
427	739	740
428	741	742
429	743	744
430	745	746
431	747	748
432	749	750
433	751	752
434	753	754
435	755	756
436	757	758
437	759	760
438	761	762
439	763	764
440	765	766
441	767	768
442	769	770
443	771	772
444	773	774
445	775	776
446	777	778

1



2



3



4



5



6



7



8



9



10



Considerations

- Planning policy
- Need for Gypsy and Traveller pitches and the personal circumstances of the Burrows family
- Landscape and visual impact on the National Park
- Highways
- Ecology
- Surface water and drainage
- Impact on the amenity of neighbouring properties



Recommendation

1. That planning permission be **granted** for application reference SDNP/17/00873/CND subject to the conditions set out in paragraphs 10.1 of the report, and;
2. That planning permission be **granted** for application reference SDNP/17/01406/FUL subject to the conditions set out in paragraphs 10.2 of the report and the December 2017 update sheet.

