

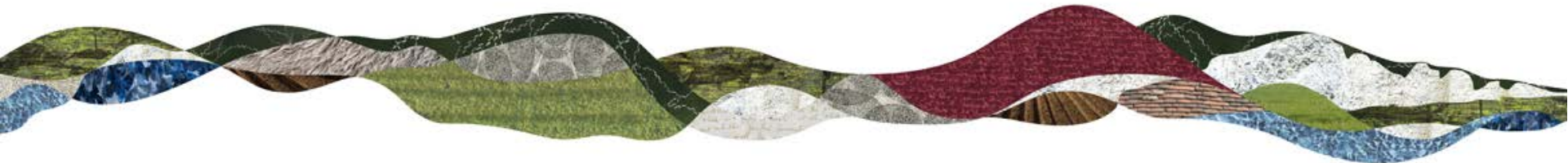
Planning Committee Meeting

14 September 2017

Agenda Item 9 SDNP/16/04613/FUL

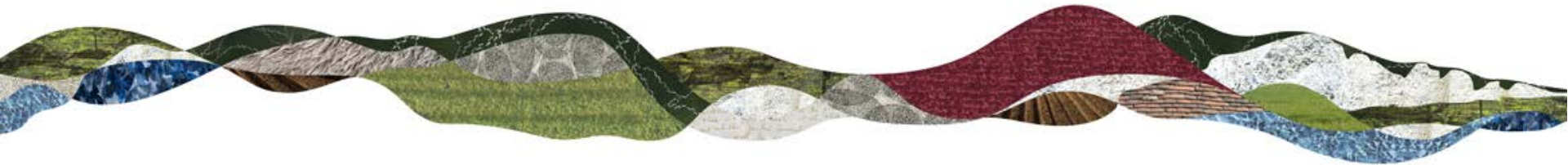
22 self-contained holiday lodges together with an on-site reception building and spa with parking and landscaping improvements following demolition of vacant hotel buildings.

Upland Park, Garrison Hill, Droxford, Hampshire, SO32 3QL

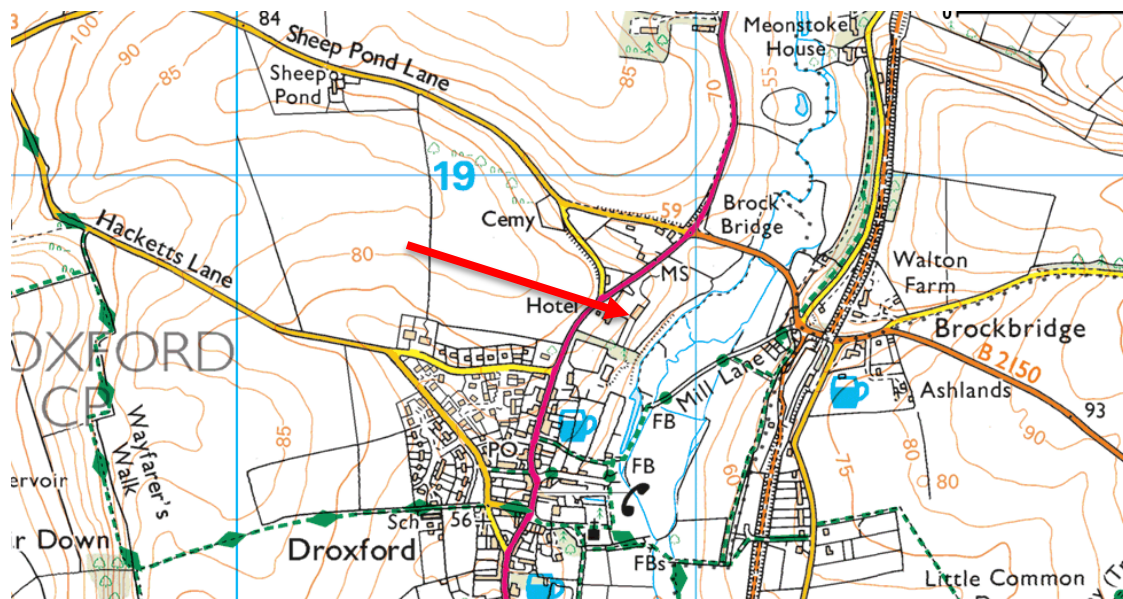


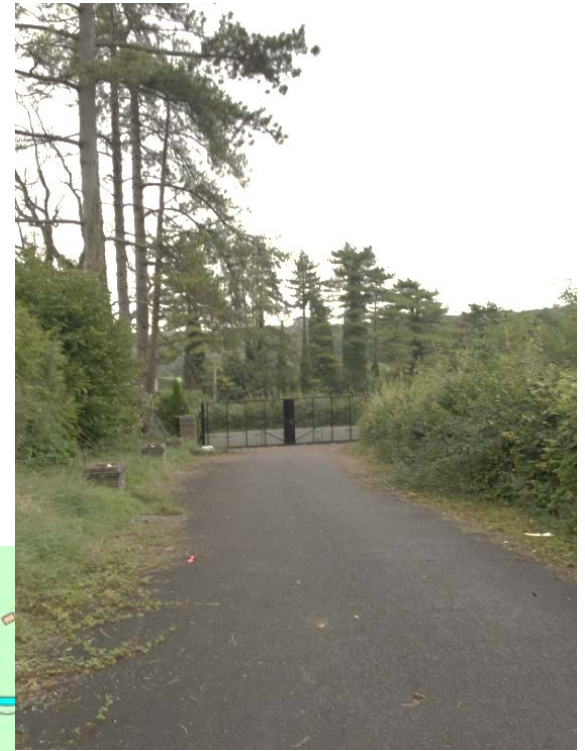
Introduction

- Principle of development and viability
- Design and landscape impact
- Landscape and ecological enhancements.
- Cultural heritage

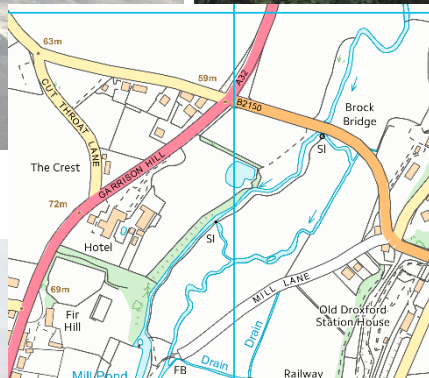


The Site



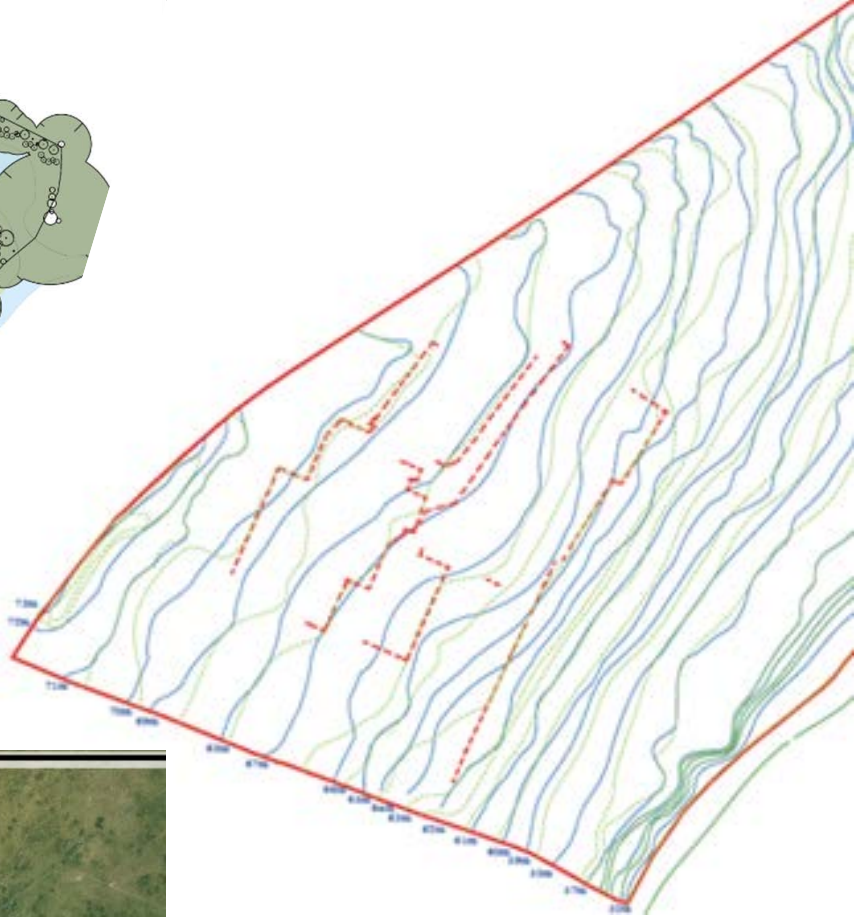


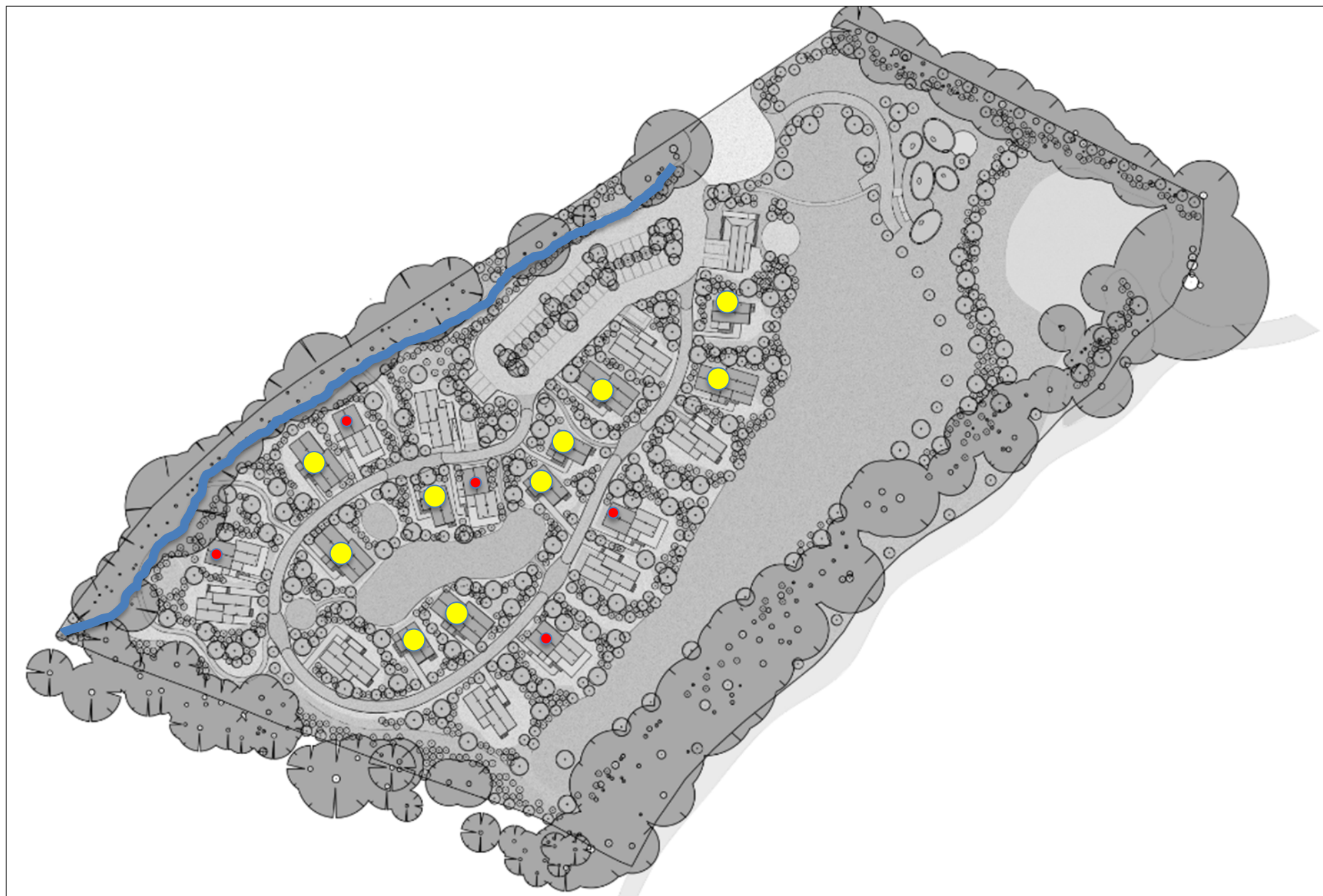




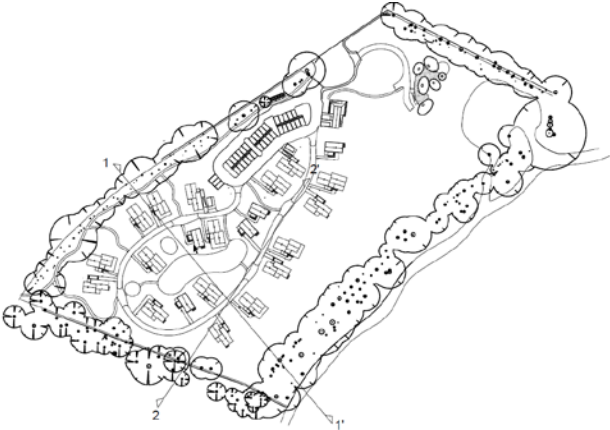
The Proposals





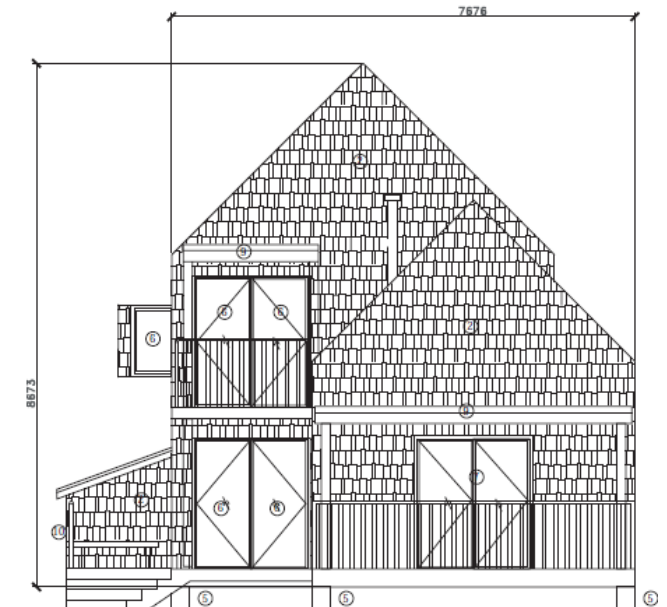
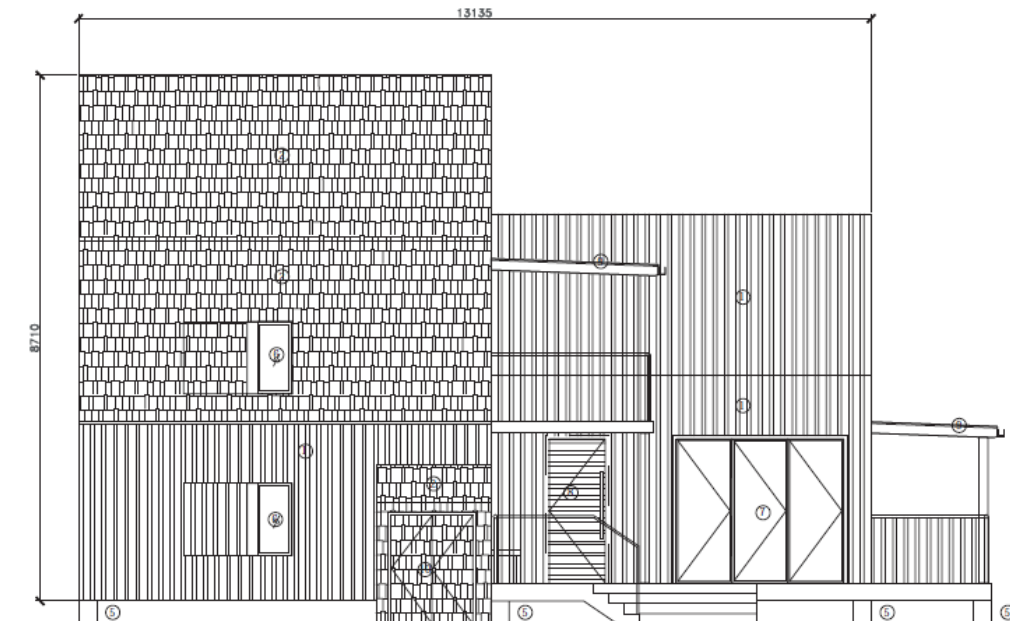
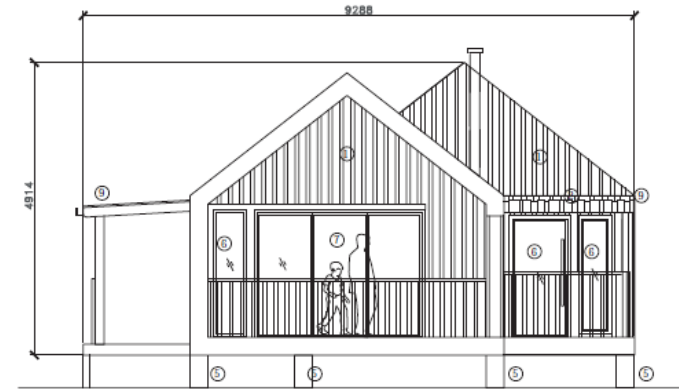
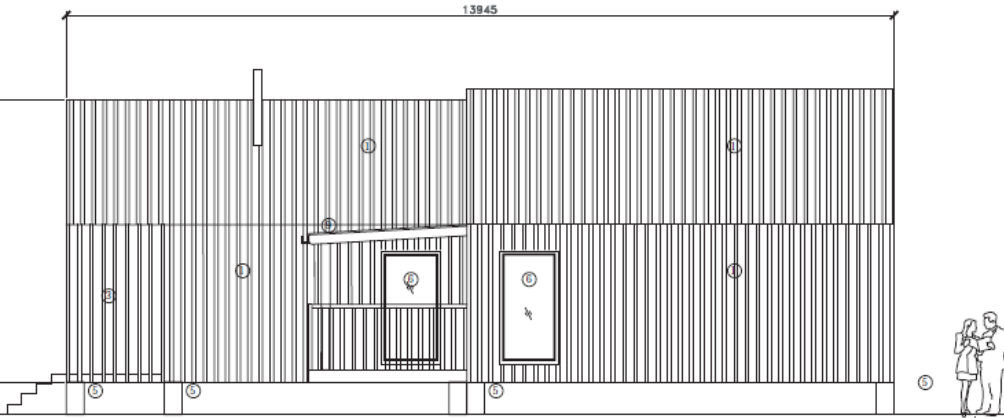


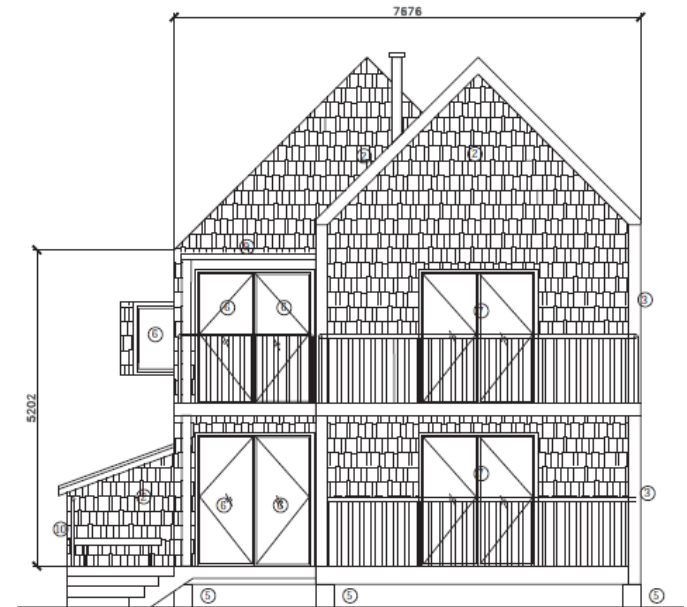
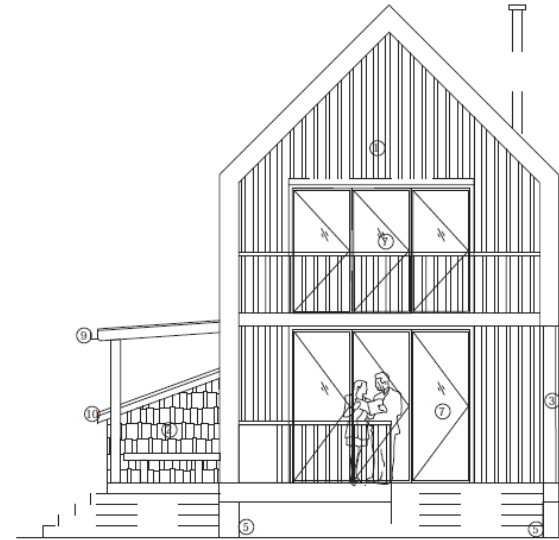
Site Sections





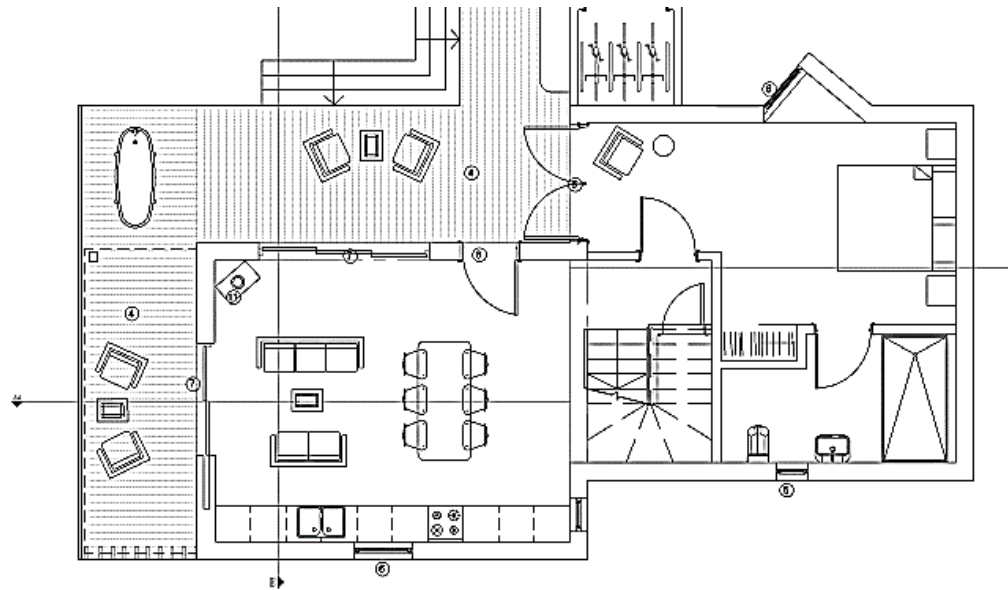
Single and one/two storey lodges



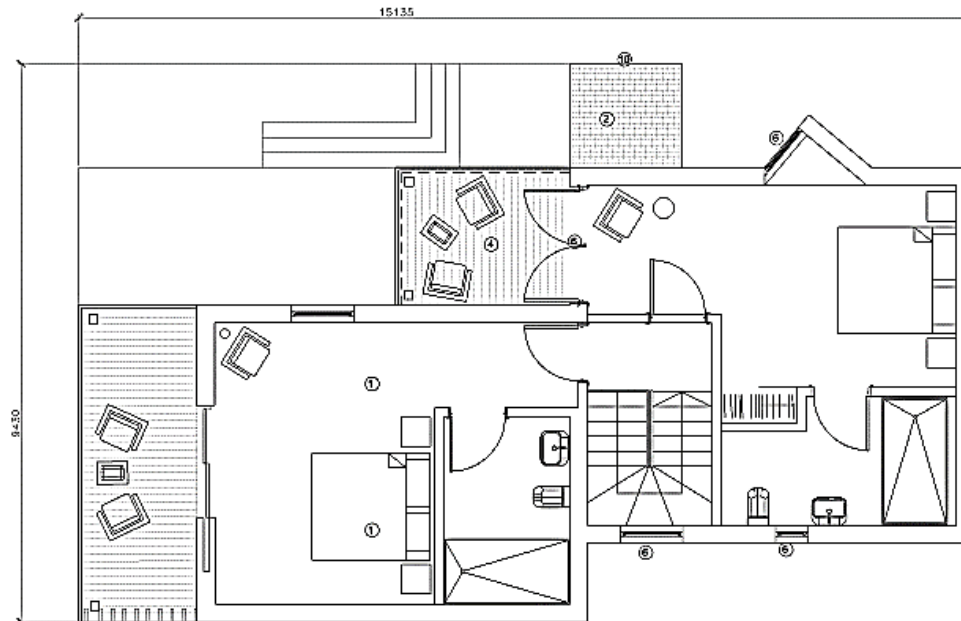




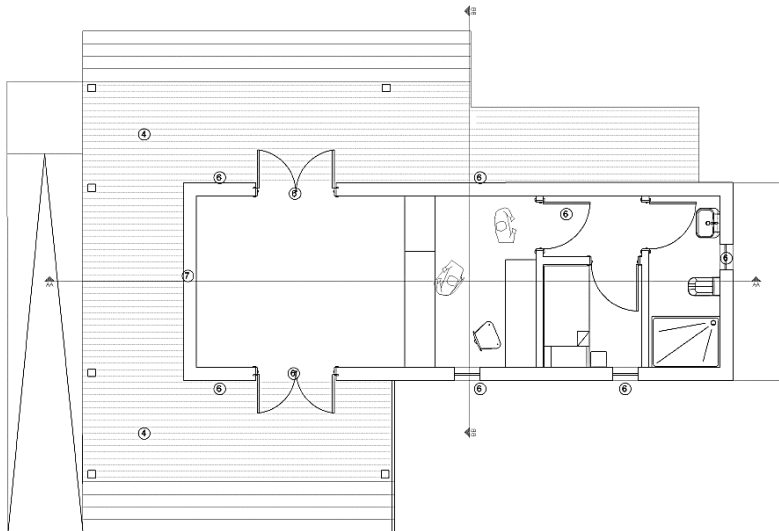
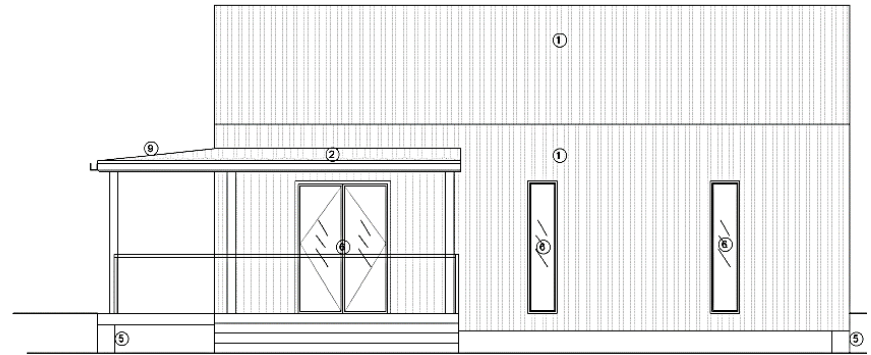
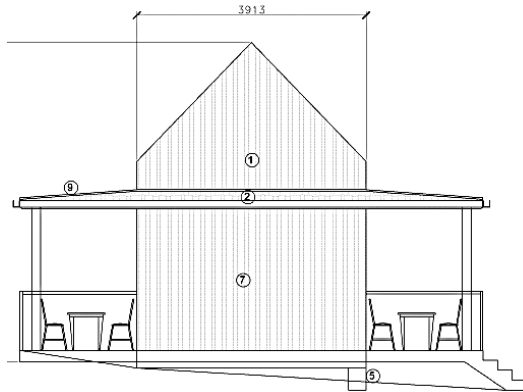
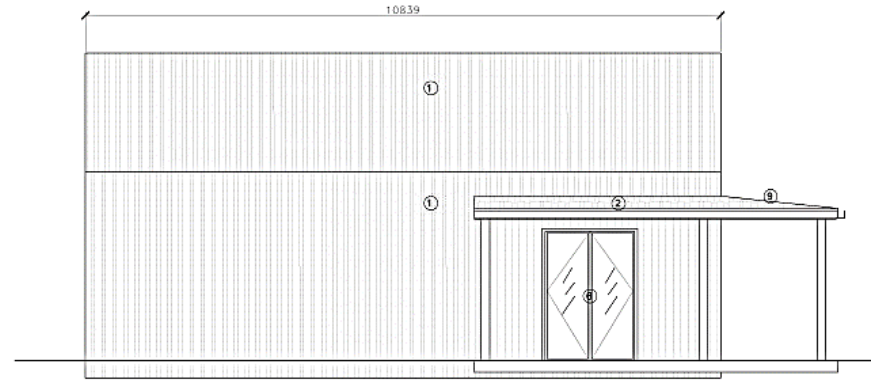
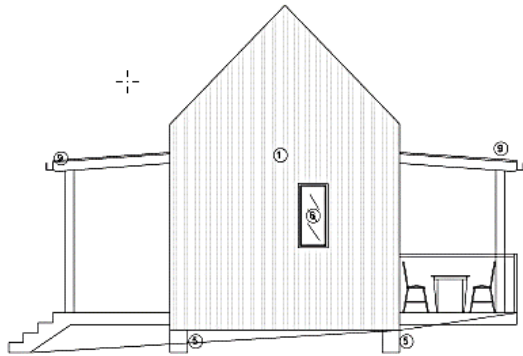
Floor plan of the largest lodge (no.3 bedrooms)



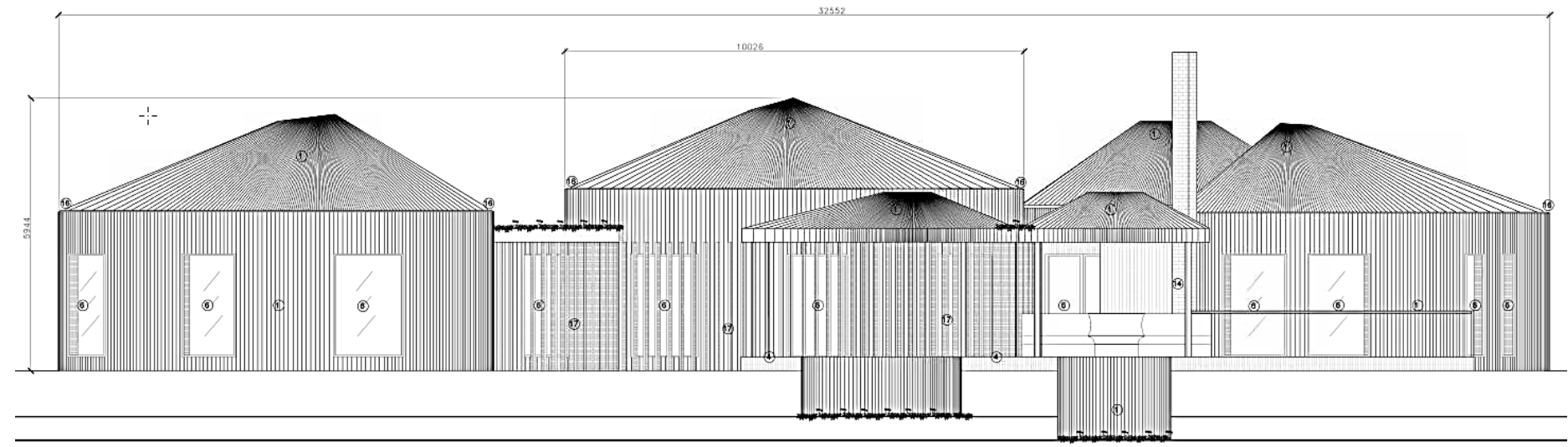
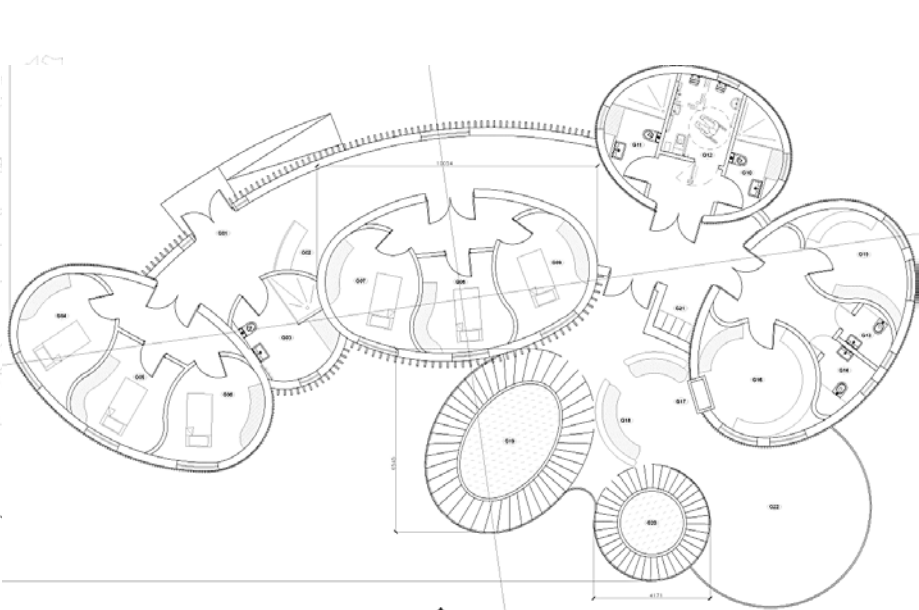
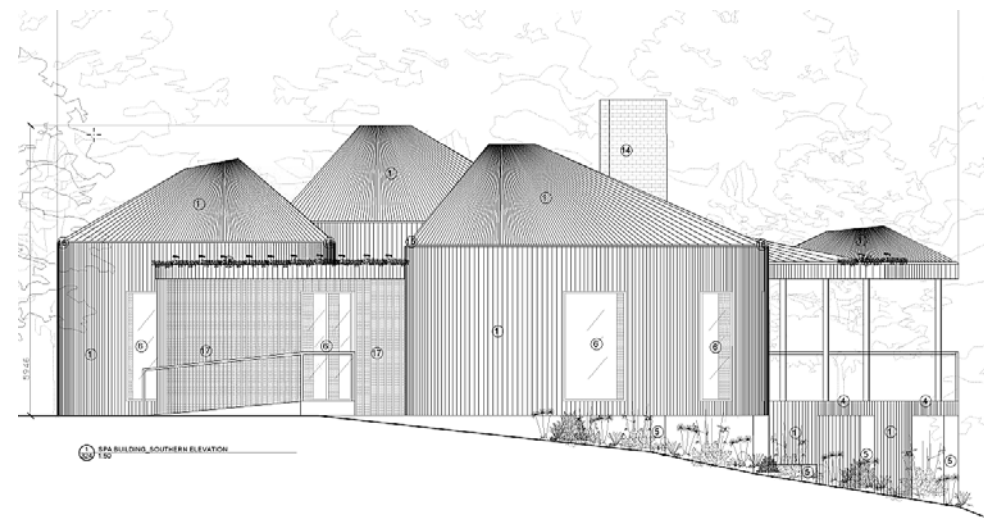
LODGE TYPE 6.01 GROUND FLOOR PLAN
150



Reception Building



Spa Building





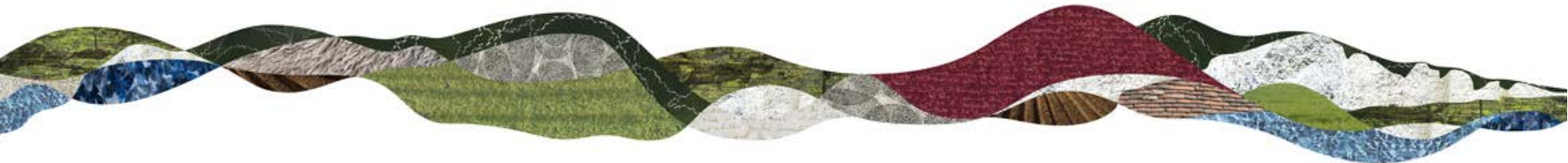
Considerations

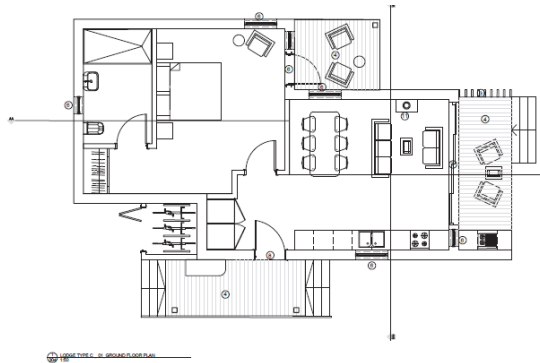
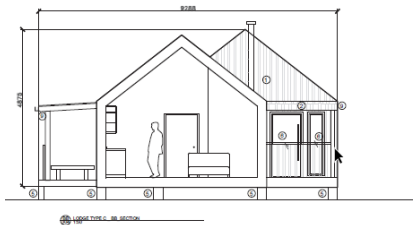
- Principle of development and viability
- Design and landscape impact
- Landscape and ecological enhancements.
- Cultural heritage



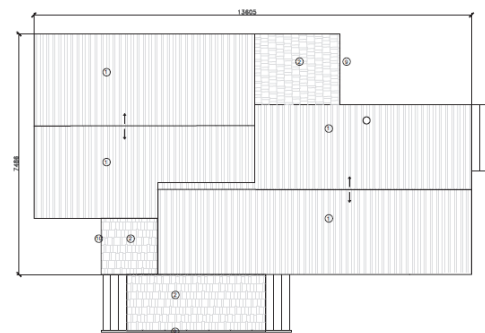
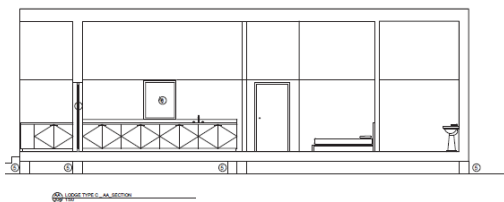
Recommendation

That planning permission be granted subject to the conditions outlined in paragraph 10.1 of the report and the Update Sheet.

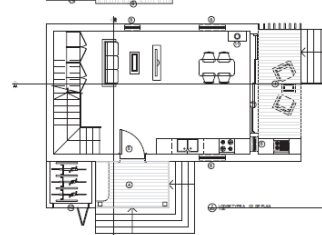
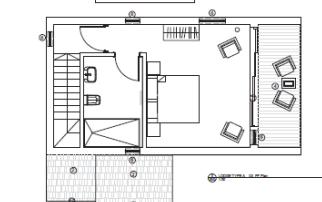
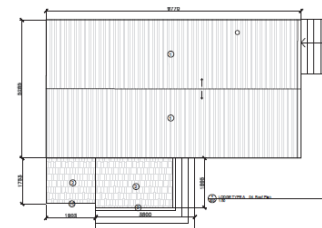
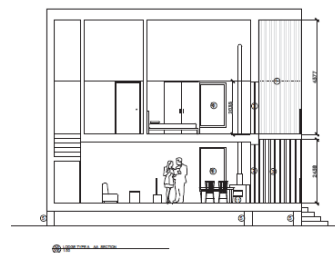
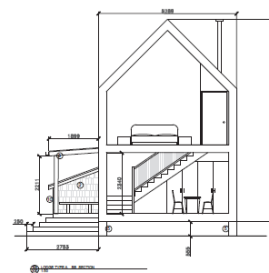


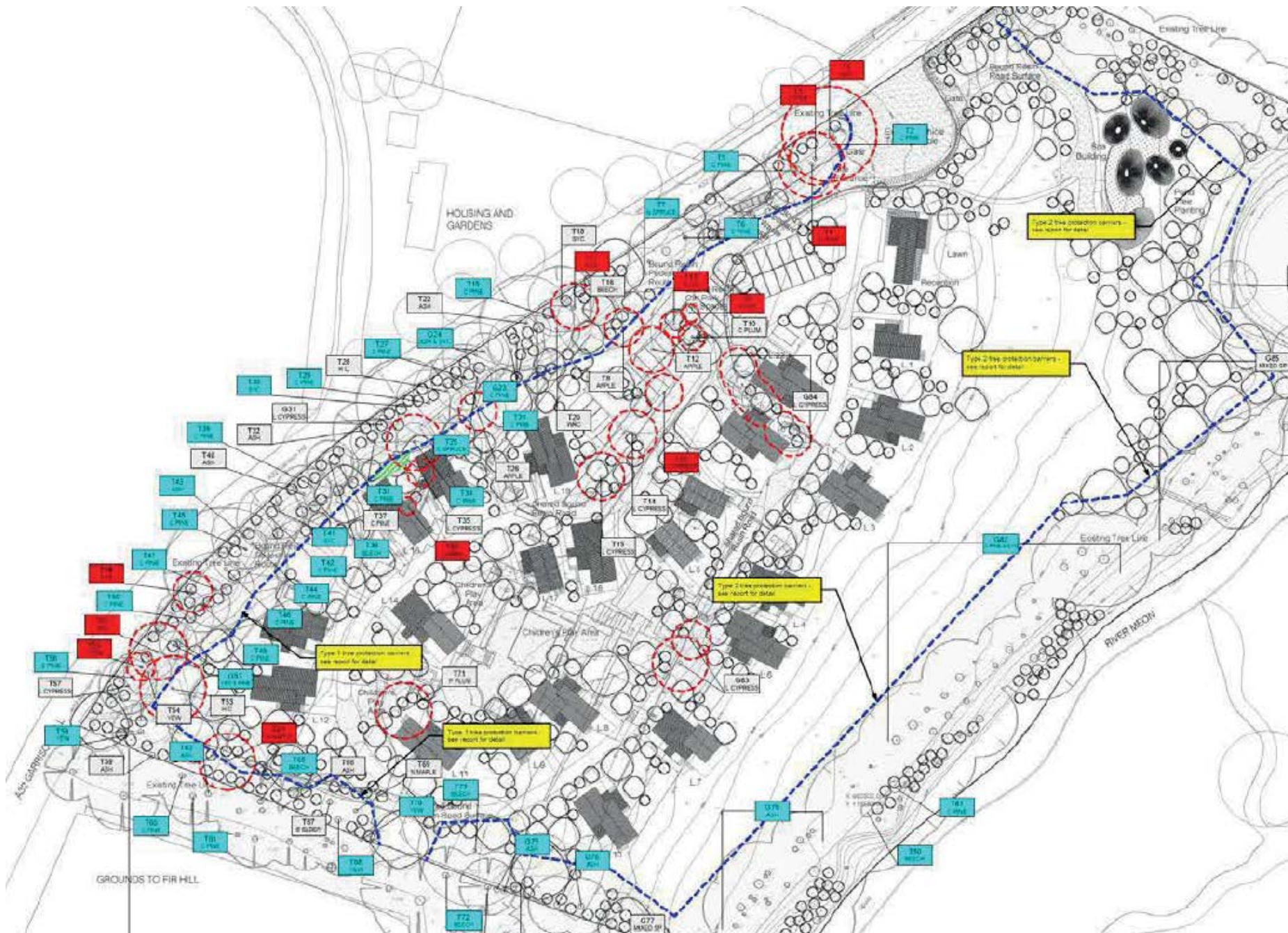


C



A







THE LANDSCAPE ARCHITECTURE OF THE SITE IS DESIGNED TO BE A COHESIVE WHOLE, WITH THE LANDSCAPE AND BUILDINGS WORKING TOGETHER TO CREATE A SENSE OF PLACE AND COMMUNITY.

THE LANDSCAPE ARCHITECTURE OF THE SITE IS DESIGNED TO BE A COHESIVE WHOLE, WITH THE LANDSCAPE AND BUILDINGS WORKING TOGETHER TO CREATE A SENSE OF PLACE AND COMMUNITY.

HOUSING AND GARDENS

GROUNDS TO FILL

RIVER MEON

POND

THE LANDSCAPE ARCHITECTURE OF THE SITE IS DESIGNED TO BE A COHESIVE WHOLE, WITH THE LANDSCAPE AND BUILDINGS WORKING TOGETHER TO CREATE A SENSE OF PLACE AND COMMUNITY.

THE LANDSCAPE ARCHITECTURE OF THE SITE IS DESIGNED TO BE A COHESIVE WHOLE, WITH THE LANDSCAPE AND BUILDINGS WORKING TOGETHER TO CREATE A SENSE OF PLACE AND COMMUNITY.

THE LANDSCAPE ARCHITECTURE OF THE SITE IS DESIGNED TO BE A COHESIVE WHOLE, WITH THE LANDSCAPE AND BUILDINGS WORKING TOGETHER TO CREATE A SENSE OF PLACE AND COMMUNITY.

THE LANDSCAPE ARCHITECTURE OF THE SITE IS DESIGNED TO BE A COHESIVE WHOLE, WITH THE LANDSCAPE AND BUILDINGS WORKING TOGETHER TO CREATE A SENSE OF PLACE AND COMMUNITY.

THE LANDSCAPE ARCHITECTURE OF THE SITE IS DESIGNED TO BE A COHESIVE WHOLE, WITH THE LANDSCAPE AND BUILDINGS WORKING TOGETHER TO CREATE A SENSE OF PLACE AND COMMUNITY.

THE LANDSCAPE ARCHITECTURE OF THE SITE IS DESIGNED TO BE A COHESIVE WHOLE, WITH THE LANDSCAPE AND BUILDINGS WORKING TOGETHER TO CREATE A SENSE OF PLACE AND COMMUNITY.

THE LANDSCAPE ARCHITECTURE OF THE SITE IS DESIGNED TO BE A COHESIVE WHOLE, WITH THE LANDSCAPE AND BUILDINGS WORKING TOGETHER TO CREATE A SENSE OF PLACE AND COMMUNITY.

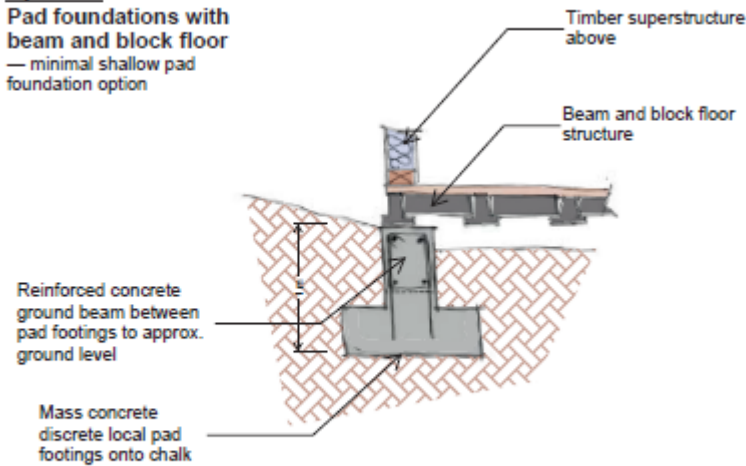
THE LANDSCAPE ARCHITECTURE OF THE SITE IS DESIGNED TO BE A COHESIVE WHOLE, WITH THE LANDSCAPE AND BUILDINGS WORKING TOGETHER TO CREATE A SENSE OF PLACE AND COMMUNITY.

THE LANDSCAPE ARCHITECTURE OF THE SITE IS DESIGNED TO BE A COHESIVE WHOLE, WITH THE LANDSCAPE AND BUILDINGS WORKING TOGETHER TO CREATE A SENSE OF PLACE AND COMMUNITY.

Option 1

Pad foundations with beam and block floor

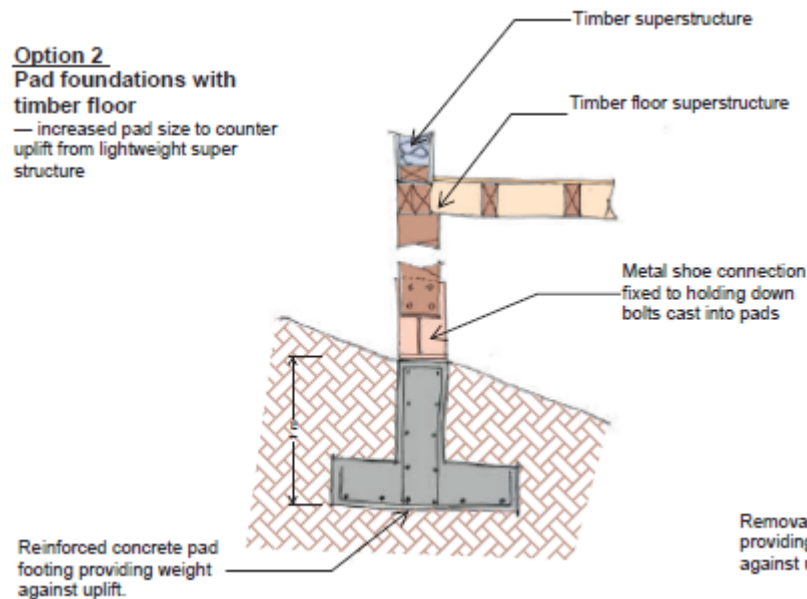
— minimal shallow pad foundation option



Option 2

Pad foundations with timber floor

— increased pad size to counter uplift from lightweight superstructure



Option 3

Screw piles with timber floor

— screw piles provide tension capacity to counter uplift

