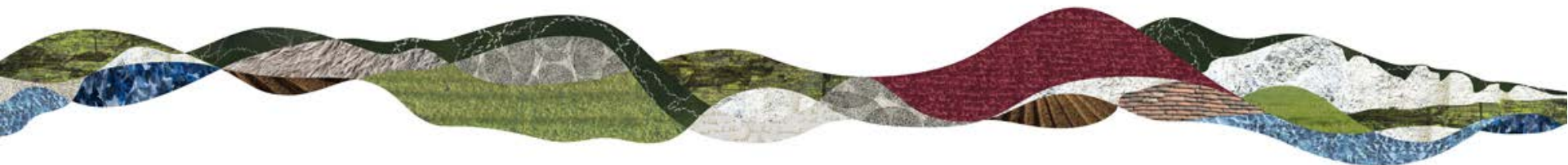


# Planning Committee Meeting

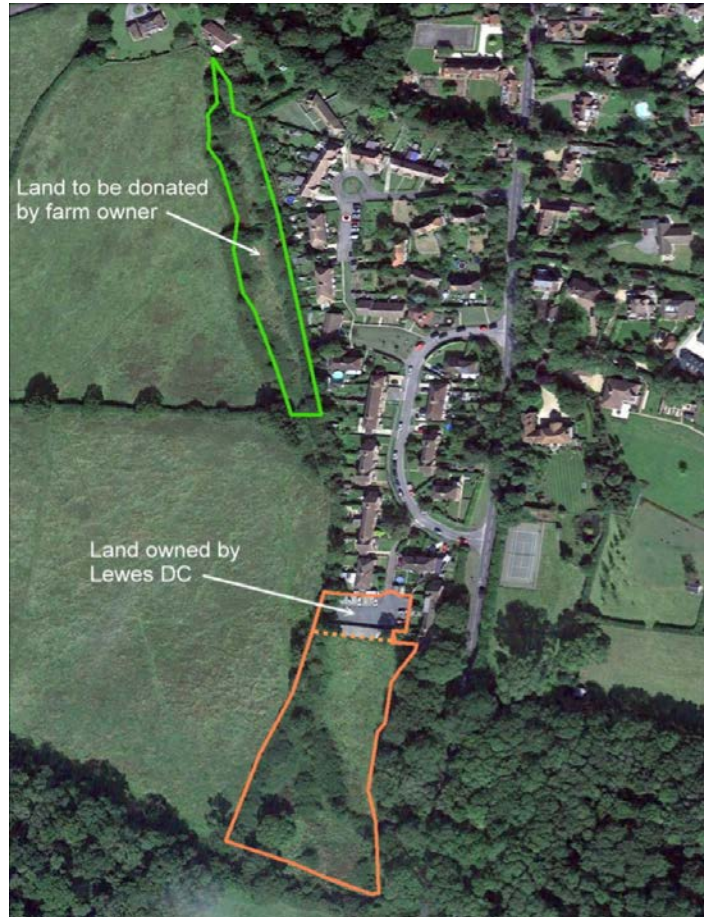
## 12 October 2017

### Agenda Item 11

### Quarterly Update on the Progress of Neighbourhood Planning



# Ditchling, Westmeston & Streat NDP



Land at Park  
Barn Farm,  
Ditchling –  
allocation for  
12 dwellings



# Lewes NDP – Modular Housing



Examples of available cladding

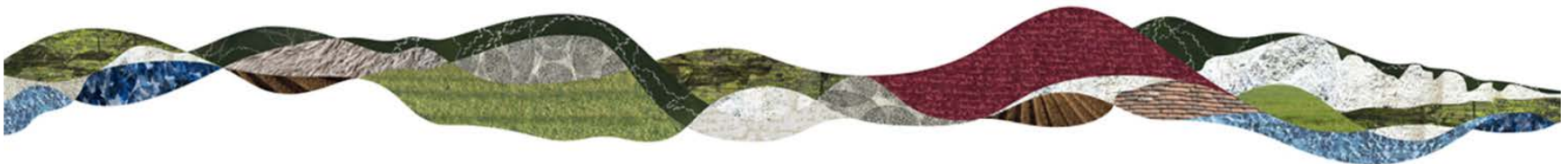


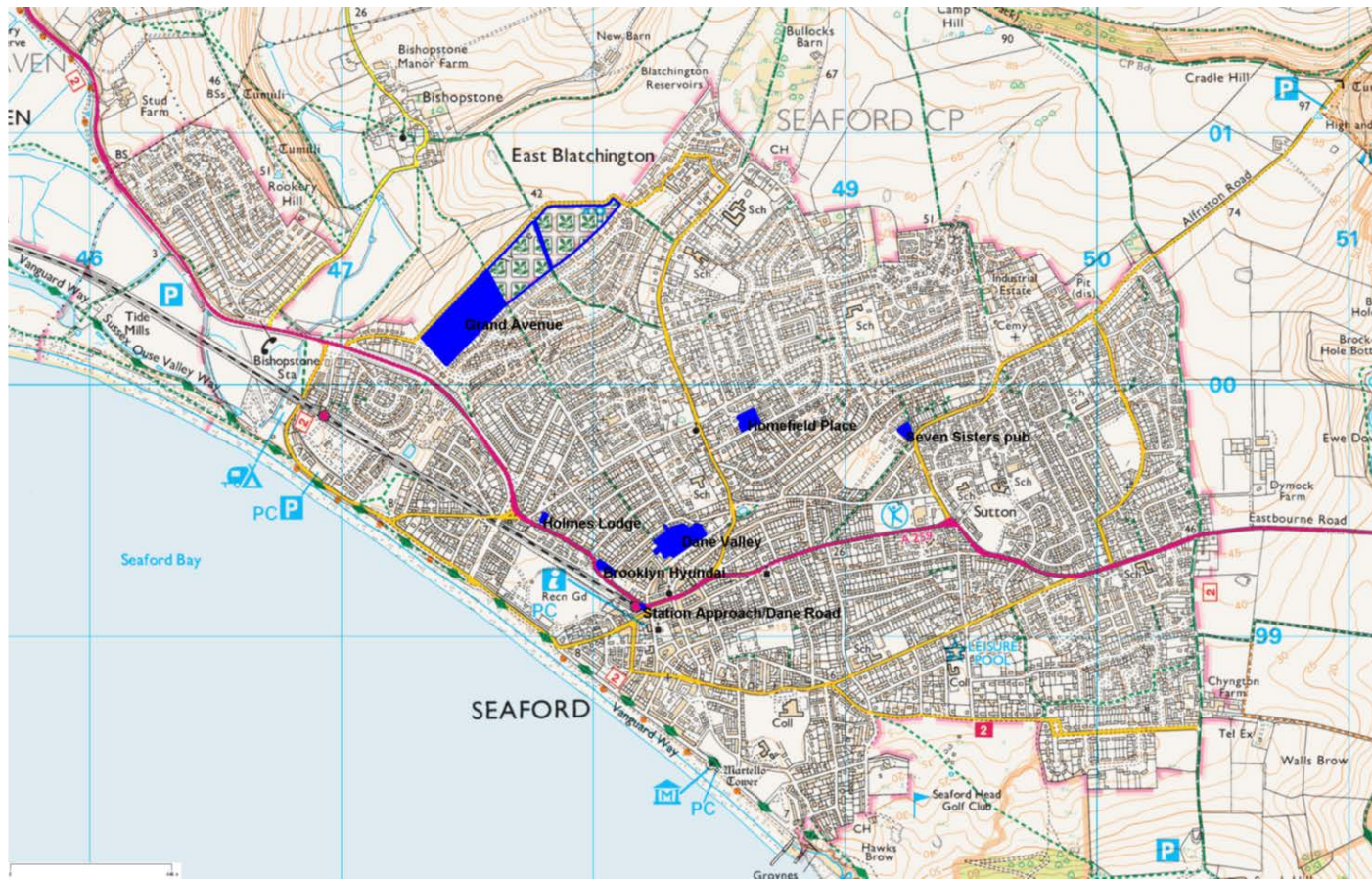
Zed Pod - Low Carbon, Low Cost Housing





# Example of a garage site, Lewes







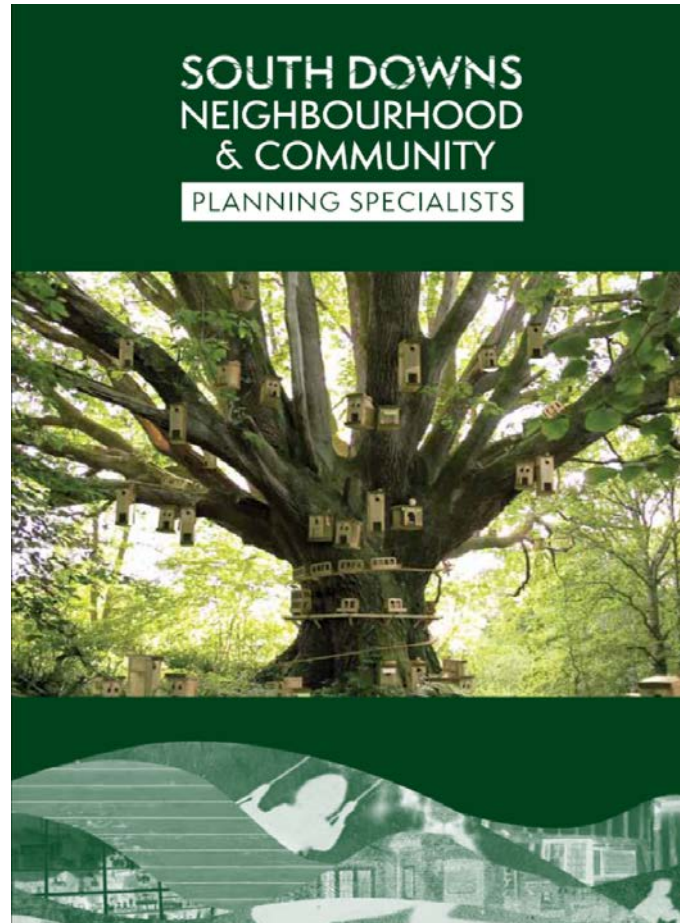
# Storrington, Sullington & Washington



Land at Ravenscroft Allotments, Storrington - 70 dwellings of which a high proportion would be affordable units



# Neighbourhood Plan Consultancy Work



# Recommendation

- **Committee is recommended to note the progress to date on the preparation of Neighbourhood Development Plans across the National Park**

