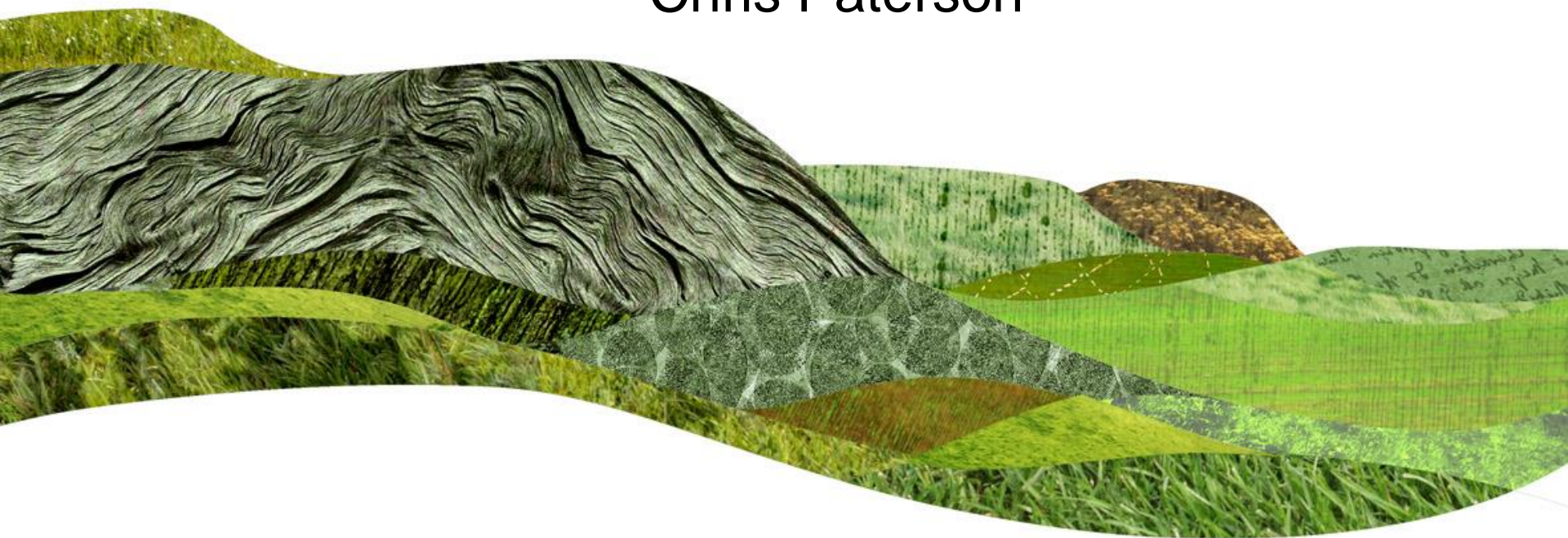


Endorsement of Newton Valence Parish Plan

Chris Paterson

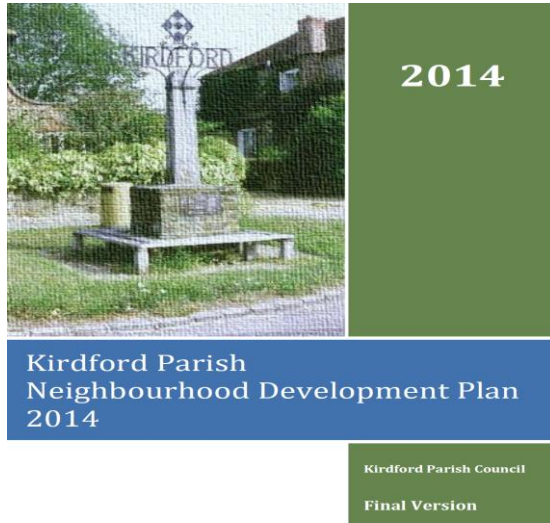


What is Community Led Planning (CLP)

- Community Led Planning gives people the opportunity to shape the environment in which they live and have more influence in how their community changes or develops
- Describe the strengths, weakness, opportunities and threats
- Prepare action plans and influence decision making



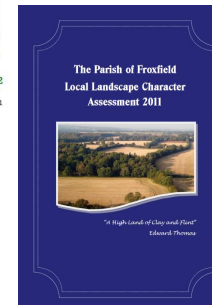
Their influence...



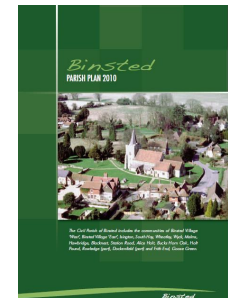
Neighbourhood Plans



Village Design Statements



LLCA



Parish Plans



Community Led Plans in the South Downs



SDNPA Support

- October 2013 NPA set out their commitment to endorse or adopt CLP
- Statutory duty to support Neighbourhood Planning (52)
- No Statutory duty to support CLP (96)
- CLP toolkit describes how to prepare plans
- Resources to support 2-3 CLP per year



Why Community Led Planning

- Useful source of local intelligence to inform plan making (PMP, Local Plan)
- Understand 176 communities concerns and aspirations
- Source of evidence for Sustainable Communities Fund
- Support decision making (Planning applications)



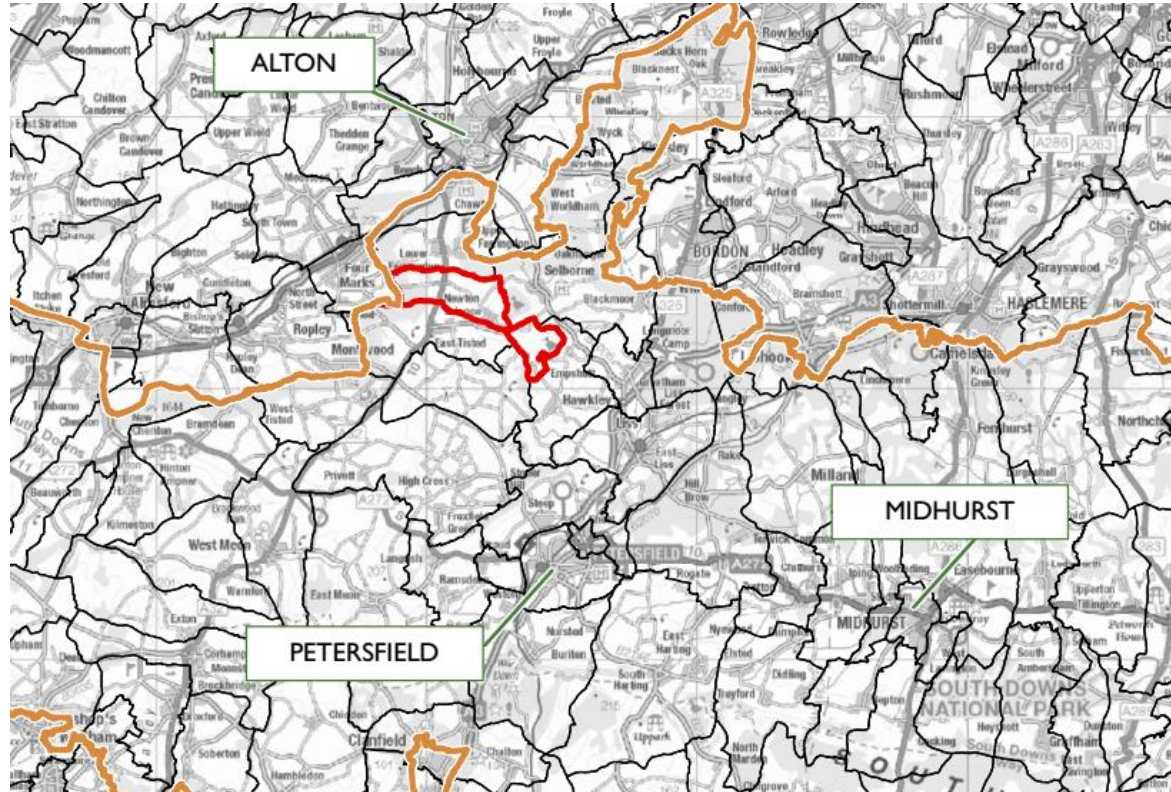
Endorsing at P&R Committee

- SDNPA committed to adopting / endorsing community led plans
- Planning Committee adopt VDS as supplementary planning documents
- Appropriate to consider at P&R as similar in nature to Whole Estate Plans
- PP, MTHC, LLCA endorsed at P&R Committee
- Decision taken to endorse PP at P&R Committee



Newton Valence Parish Plan

Where



Newton Valence Parish Plan

- Steering group of 12 volunteers prepared the plan
- Extensive public engagement
 - likes dislikes questionnaire
 - village questionnaire (67%)



- Draft plan prepared submitted to statutory bodies for consideration
- Prepared with support from Communities Lead, local ranger team, Planning Link Officer



Newton Valence Parish Plan

- NVPP covers a wide range of topics

- Environment
- Community
- Housing & Development
- Business / Employment



- SDNP related projects / ambitions

- maintenance / improvements to key habitats
- dark night sky
- redundant agricultural buildings
- public rights of way



Conclusion...

- Positive engagement with SDNPA Officers
- Extensive community engagement
- Clear description of the wider communities aspirations
- Understanding of the National Park setting
- Willingness to continue to work with SDNPA Officers on local projects
- Well prepared / evidenced Parish Plan recommended for endorsement



Recommendation

**The Committee is recommended to endorse the
Newton Valence Parish Plan**

