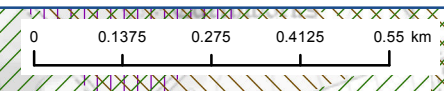
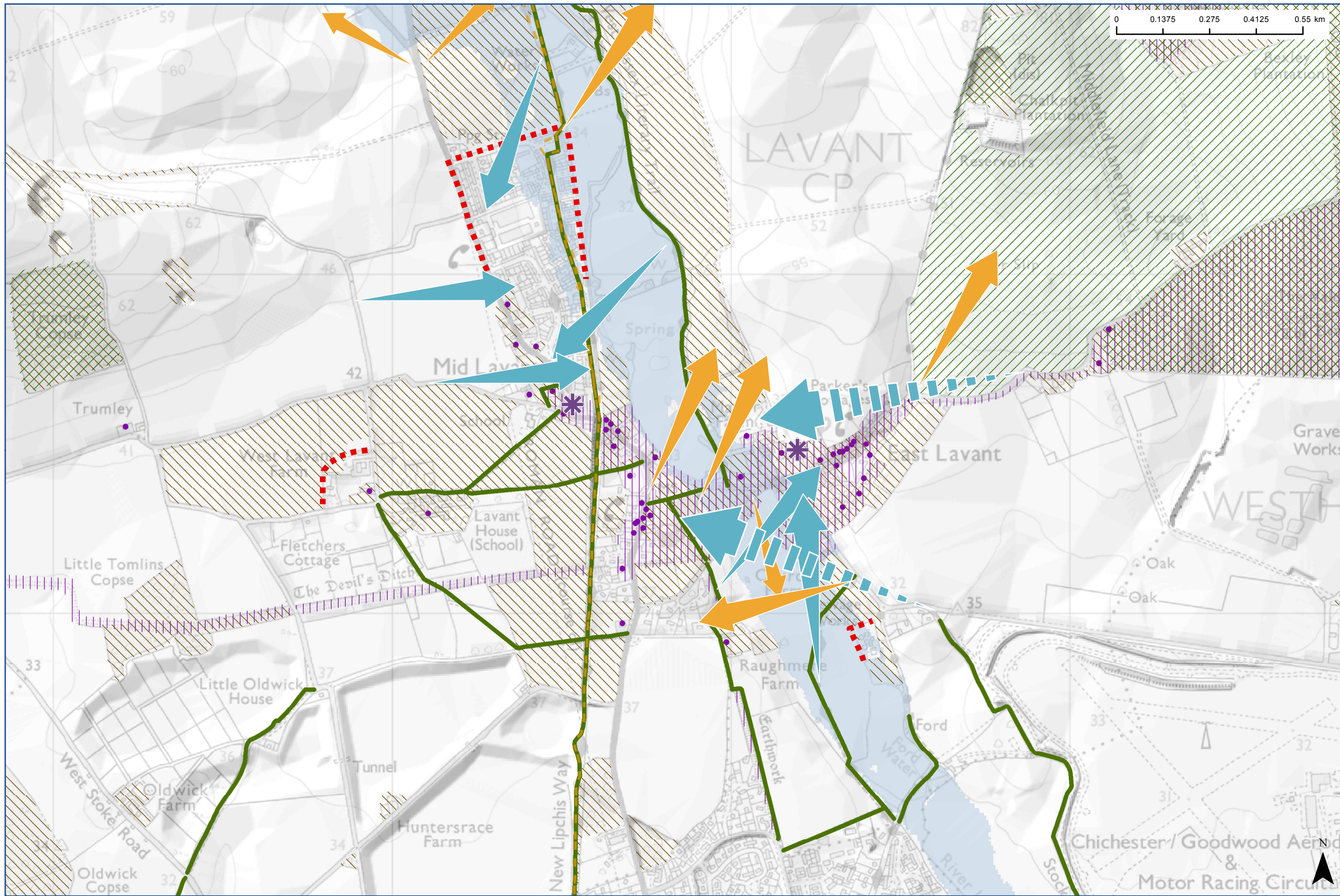


# Settlement Context Study Sensitivity Analysis: Lavant



- Biodiversity**
- Landscape Character**
- Cultural**
- Green Corridor**
- Viewpoints**
  - Glimpsed View
  - Open unfiltered view
  - View out of settlement
- Landmarks
- Intrusion (noise and visual)
- River and stream corridor
- Cycle Route

