

Art Commissions – Expression of Interest

I. Background and Context

Uniquely combining a biodiverse landscape with bustling towns and villages, the South Downs National Park covers an area of over 1,600 km² and is home to more than 108,000 people. The South Downs National Park Authority (SDNPA) is the organisation responsible for promoting the purposes of the National Park and the interests of the people who live and work within it. For more information about the South Downs National Park and the National Park Authority please visit our website. www.southdowns.gov.uk

Heathlands Reunited is a Heritage Lottery funded project, led by the South Downs National Park Authority. The project aims to expand, create new and improve existing heathland to cover an area greater than 1,200 football pitches. The project will run for the next four years working with 11 partners on 41 heathland sites.

Lowland heath covers approximately 1% of the South Downs National Park, mostly separated into 'islands' where isolated plants and animals are far more vulnerable to local extinction. The heaths are home to all twelve of our native reptiles and amphibians.

As well as habitat restoration and creation, the project aims to re-engage and inspire communities to visit their heathlands, learn more about them and work together to look after them so they can be enjoyed for generations to come.

The South Downs National Park Authority is seeking Expressions of Interest from artists to create site specific pieces across 7 heathland sites in the project area across West Sussex and East Hampshire (project area map attached). This is the first site specific work to be commissioned by the SDNPA.

2. Project Aims

- To convey what local communities value about the history, flora/fauna or even the economy of their heath.
- To encourage the exploration of each heath but also encourage users to venture to the other sites.

This is very much aimed at 'joining up' the heathlands in the mind set of users so that the sites are thought of as whole rather than as fragments.

3. Overview

This document outlines the design, manufacture and installation of the required artwork. Applications are welcomed from individuals, studios, companies or collaborations. We have suggested scope for the project, but are open to different approaches. Throughout this brief the term 'artist' is used to describe all creative practitioners.

4. Project

- Specification – use materials appropriate to the natural, heathland environment within the proposed scheme, respond to the immediate environment whilst providing sensory and descriptive interaction for visitors.
- Target users – local communities and visitors to the heathland.
- Suitability – Artists with a good understanding of creating public art which is robust, can withstand local weather conditions without requiring costly and time consuming maintenance. Is sympathetic to its immediate environment.
- Budget –£30,000 (incl. VAT where applicable).
- Purpose - We require artwork that connects the 7 heathland sites, has a cohesive theme which reflects the heathland, its unique nature and its place within the local community. The scheme should appeal to all, be engaging, imaginative and accessible, with the capacity to intrigue and inform.

We are seeking Expressions of Interest from artist/s from across the creative disciplines including but not exclusively, landscape artists, digital artists, mix media, and those of a more traditional nature.

5. Process

The commission once awarded will be divided into two phases:

Stage I - Design

SDNPA is committed to ensuring visitors and local communities to the heathland feel connected to and enjoy the landscape. It is important that each artwork has been designed with them and the unique heathland environment in mind.

As part of the Heathlands Reunited project a group of experienced volunteers are currently researching and gathering archive material and oral histories to be used by the artist/s:

- a. To inspire designs
- b. To be incorporated into the finished work to reflect the communities in which each artwork is located

The artist/s will prepare drawings and samples to illustrate their proposal for approval by the project team. The proposal must contain evidence that it is technically and financially feasible and complies with regulations. The proposal will need to include:

- a. a project timeline
- b. detailed budget
- c. plan for future maintenance of the work (if required)*

*Due to the nature of this commission the longevity of each work is flexible although a minimum of 12 months is desirable), and in the case of e.g. landscape artists, we recognise that work may be designed to deteriorate over time.

Stage 2 - Production and Installation

The artist/s is required to implement the work, including overseeing installation, liaising with subcontractors (if required), working closely with SDNPA staff, providing regular updates and reporting when required. The artist/s will make provision to ensure that proper health and safety and working practices are observed. Work should be completed and installed by the agreed project deadline.

6. Timeline Deadlines

Artist Recruitment and Contract

Stage 1: EOI Submission	Deadline:
Stage 2: Interview and presentation	TBC

Commencement of contract:	1 April 2018
Installation	Within 12 months from the start of the contract

7. Budget

£30,000 inc VAT if applicable

SDNPA is responsible for ensuring funds are spent in a responsible manner and the budget cannot be exceeded. The sum of £30,000 is inclusive. A full and detailed budget will be required by the artist/s with regular monitoring to ensure any issues are discussed and resolved jointly with SDNPA. Any further costs incurred and not agreed in advance will be met by the artist.

The budget will need to include: time, materials, expenses (e.g. travel), installation, contingency, and maintenance, professional fees (not the artist/s), payments to subcontractors. The commissioned artist should be responsible for public liability insurance for installation and product liability Insurance (up to £10 Million)

8. Artist Selection and Appointment

Submission Details

Stage 1: In the first instance artists are invited to submit an Expression of Interest.

The commission will be widely advertised and we reserve the right to approach artists directly to participate in the selection process. No artist/s will be selected outside of the tendering process.

SDNPA is looking to appoint an artist/s with proven experience of:

- Designing, producing and installing high quality, engaging outdoor public art.

Expressions of Interest must include the following:

- A covering letter (max 1,000 words) explaining your work and why the project appeals to you. We are not asking for proposals at this stage, but you are welcome to share initial thoughts.
 - A CV demonstrating your experience directly relevant to this commission.
 - Images and descriptions of up to three previous relevant projects (3 images and 300 words maximum per project). At least one project should be from the last 2 years.
 - In the case of joint applications, the criteria should be split between the artists and not multiplied.
 - Details of two referees per artist. 2 suitable references per artist will be sought as a condition of appointment.
-
- All the above should comprise one PDF document if sent via e-mail.
 - A SAE if you require any material to be returned to you.

Submissions **must** match the above criteria to be eligible for consideration. Additional information will not be considered. The process for shortlisting will be determined by skills and experience to the specific commission and assessed at interview. Unfortunately we are unable to give feedback on unsuccessful applications. You can find out more about the South National Park Authority at www.southdowns.gov.uk. Please direct all enquiries tenders@southdowns.gov.uk

Stage 2: Shortlisted artists will be invited to interview and present ideas for this commission.

The panel hopes to make a decision and appoint following Stage 2.

Expressions of interest should be received no later than: Tuesday 29th August

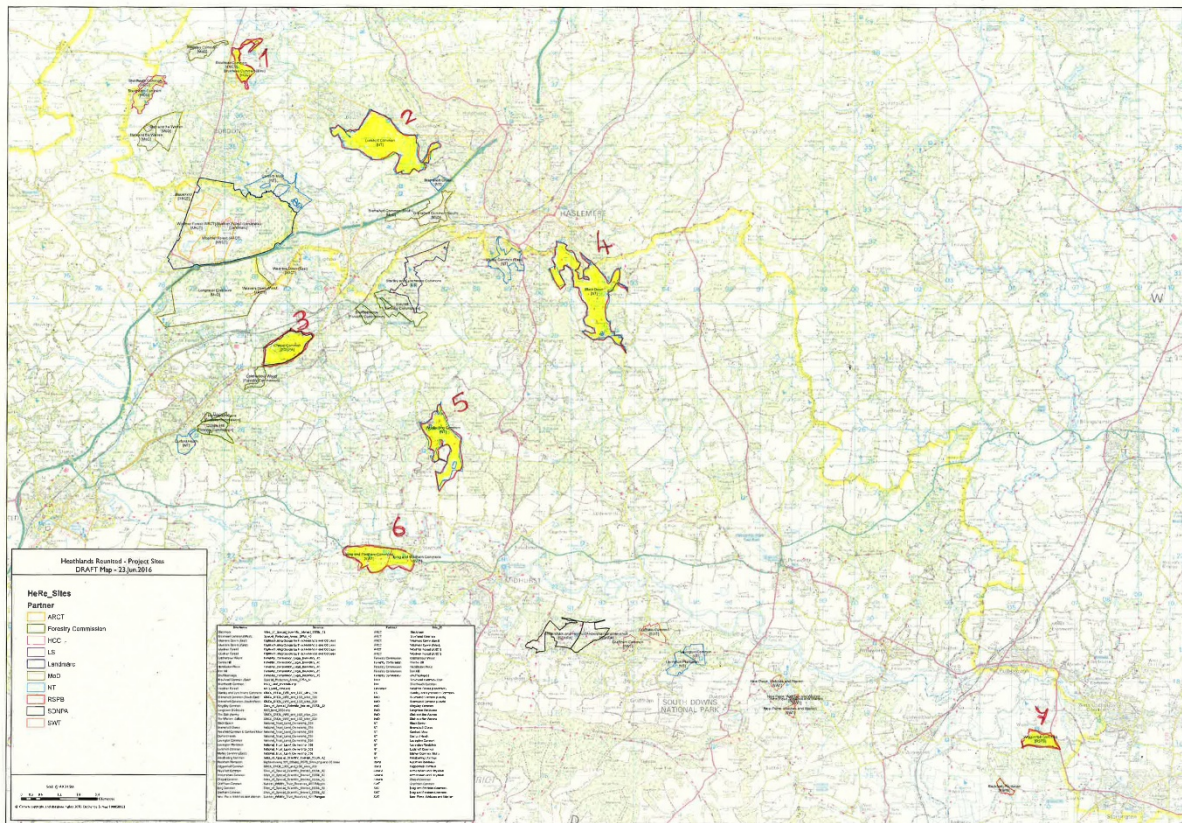
Please note: Expressions of interest received after this time will not be considered.

Please write: Heathlands Reunited Artist Commission EOI on your envelope or in the subject line if submitting via email

By Post: South Downs National Park Authority, South Downs Centre, North Street
Midhurst, West Sussex, GU29 9DH

By e-mail: tenders@southdowns.gov.uk (max. 10 MB)

Project Area Map.



- 1.) Broxhead
- 2.) Ludshott
- 3.) Chapel Common
- 4.) Blackdown
- 5.) Woolbeding
- 6.) Iping and Stedham
- 7.) Wiggonholt