

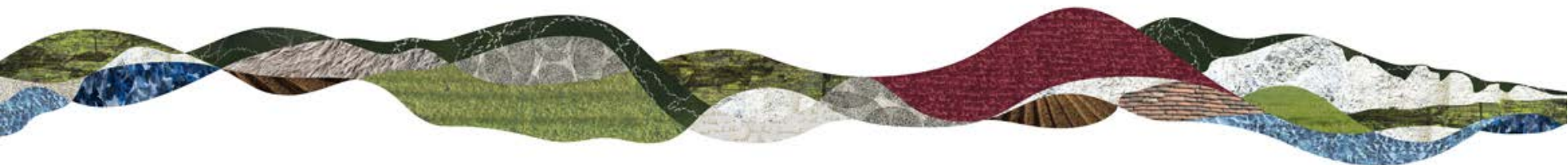
# Planning Committee Meeting

15<sup>th</sup> June 2017

Agenda Item 15

Park House Hotel, Bepton Road, Bepton, GU29 0JB

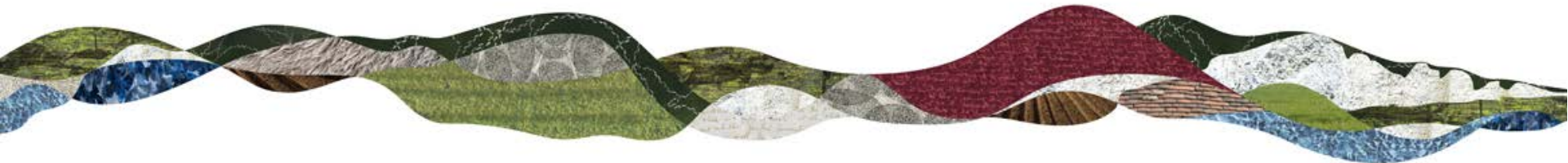
SDNP/16/06305/FUL: Change of use of field to  
overflow car park



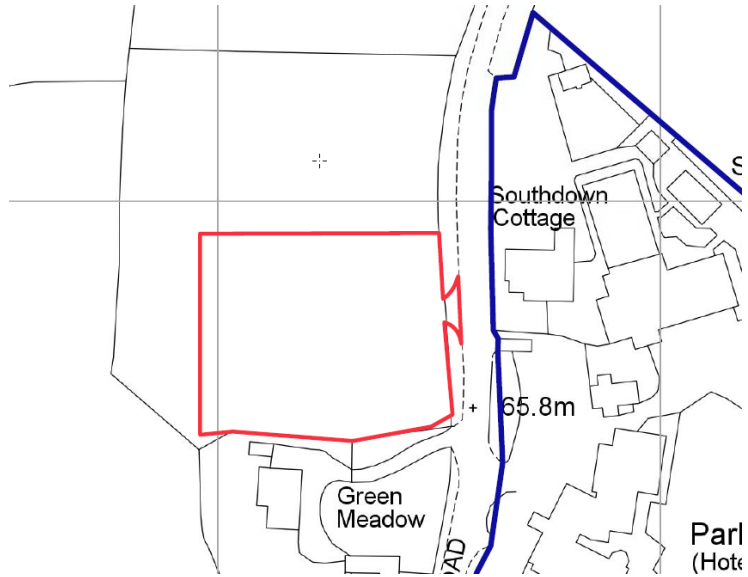
# Introduction

## Considerations

- Principle
- Previous refusal on the site (ref: SDNP/16/02291/FUL)
- Design and impact on the National Park landscape and the adjoining Conservation Area
- Residential amenity
- Highways and parking
- Listed building
- Environment and ecology



# The site

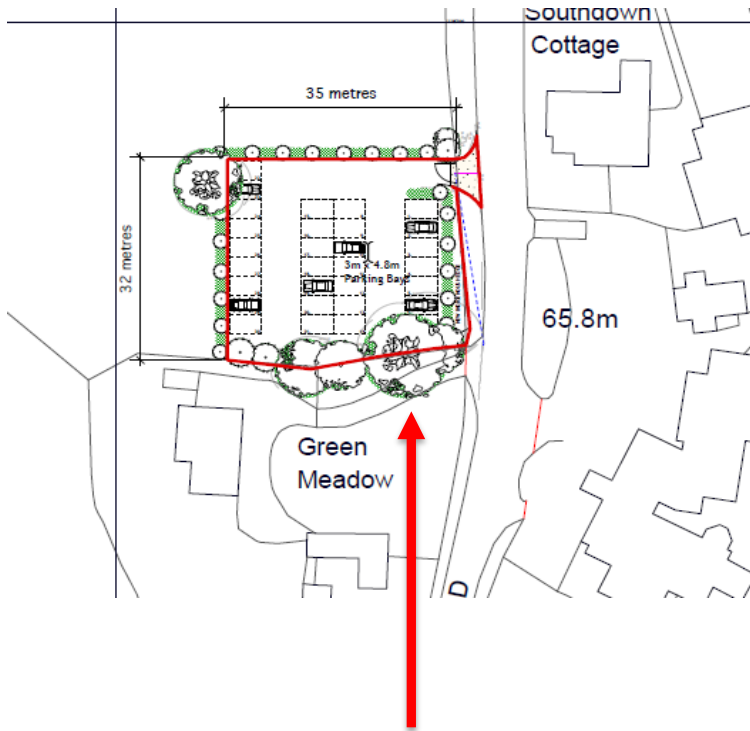


# Bepton Conservation Area

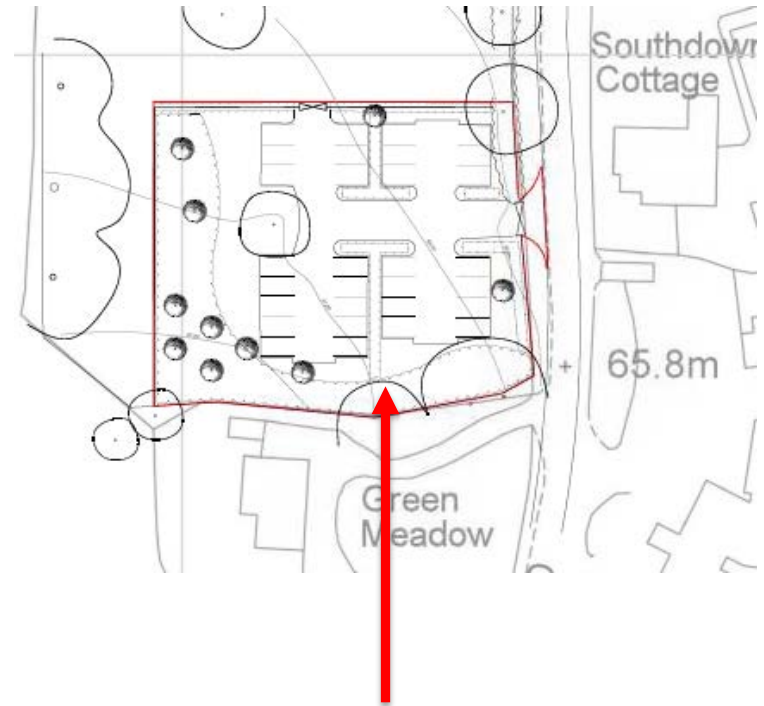
Site



# Previous refusal (SDNP/16/02291/FUL)



Refused scheme



Current proposal



# Landscape plan



1



2



3



4





5



6





# Considerations

- Principle
- Previous refusal on the site (ref: SDNP/16/02291/FUL)
- Design and impact on the National Park landscape and the adjoining Conservation Area
- Residential amenity
- Highways and parking
- Listed building
- Environment and ecology

# Recommendation

That the Planning Committee would have been minded to refuse the planning application for the reasons set out in Paragraph 10.1 of the report and that these reasons are agreed as the Authority's position in defending the appeal.

# Alternative sites

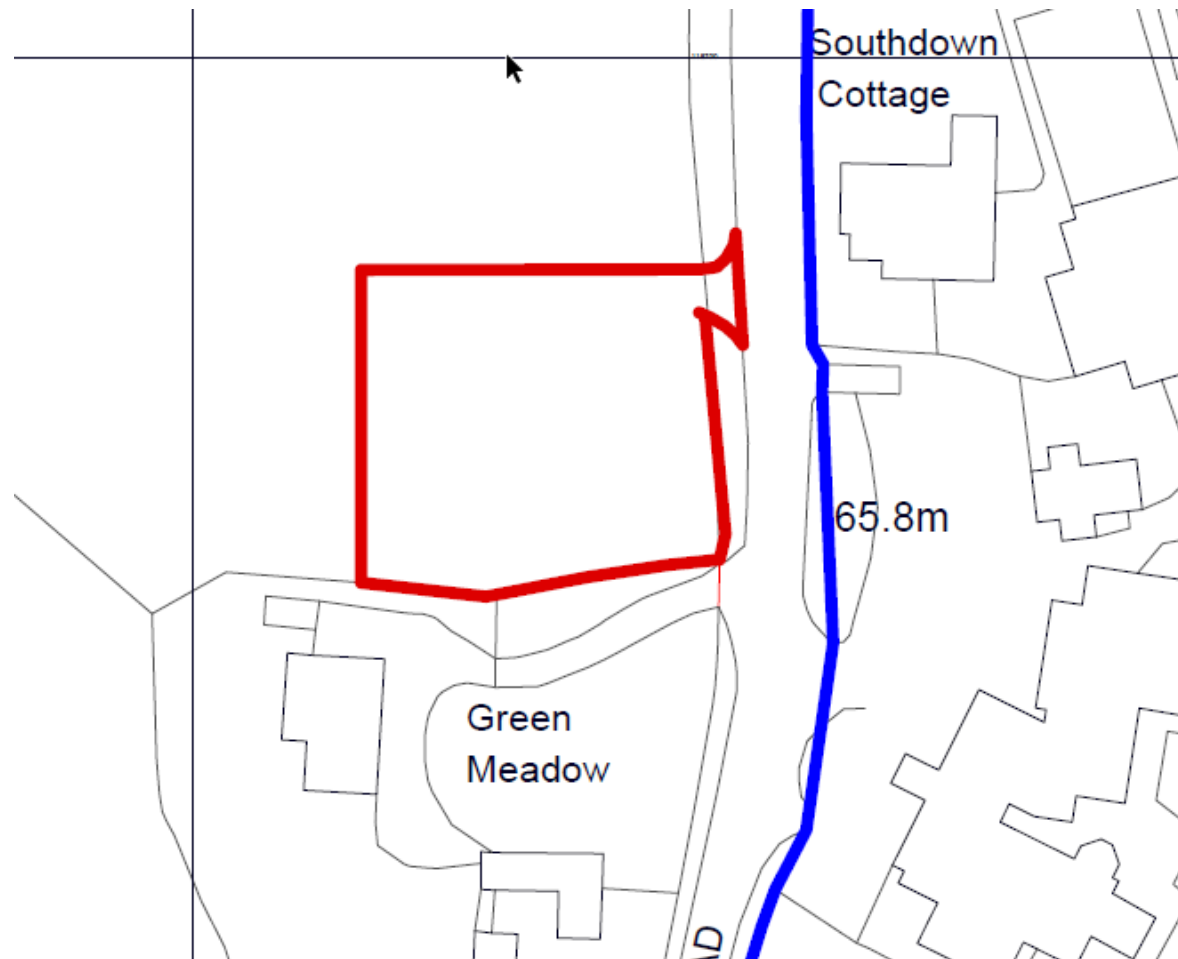


# Alternative sites 1, 2 and 3





# Site plan for refused scheme



# View from bedroom at Green Meadows

