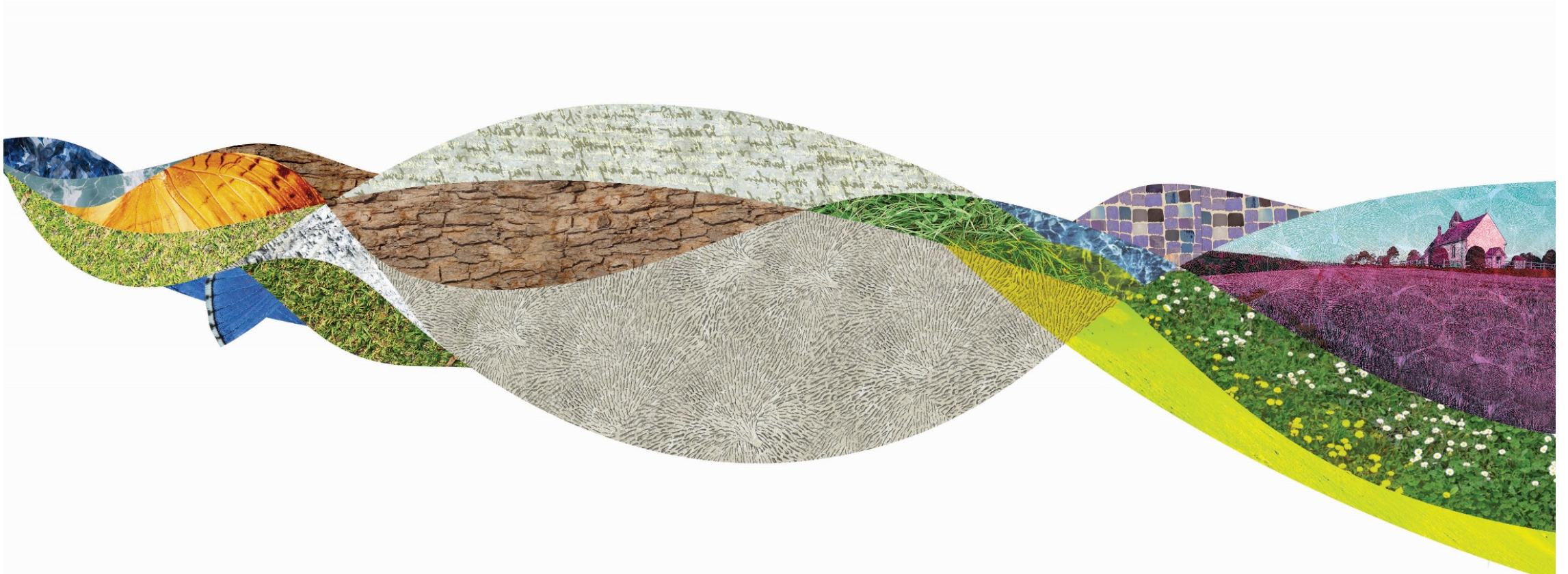
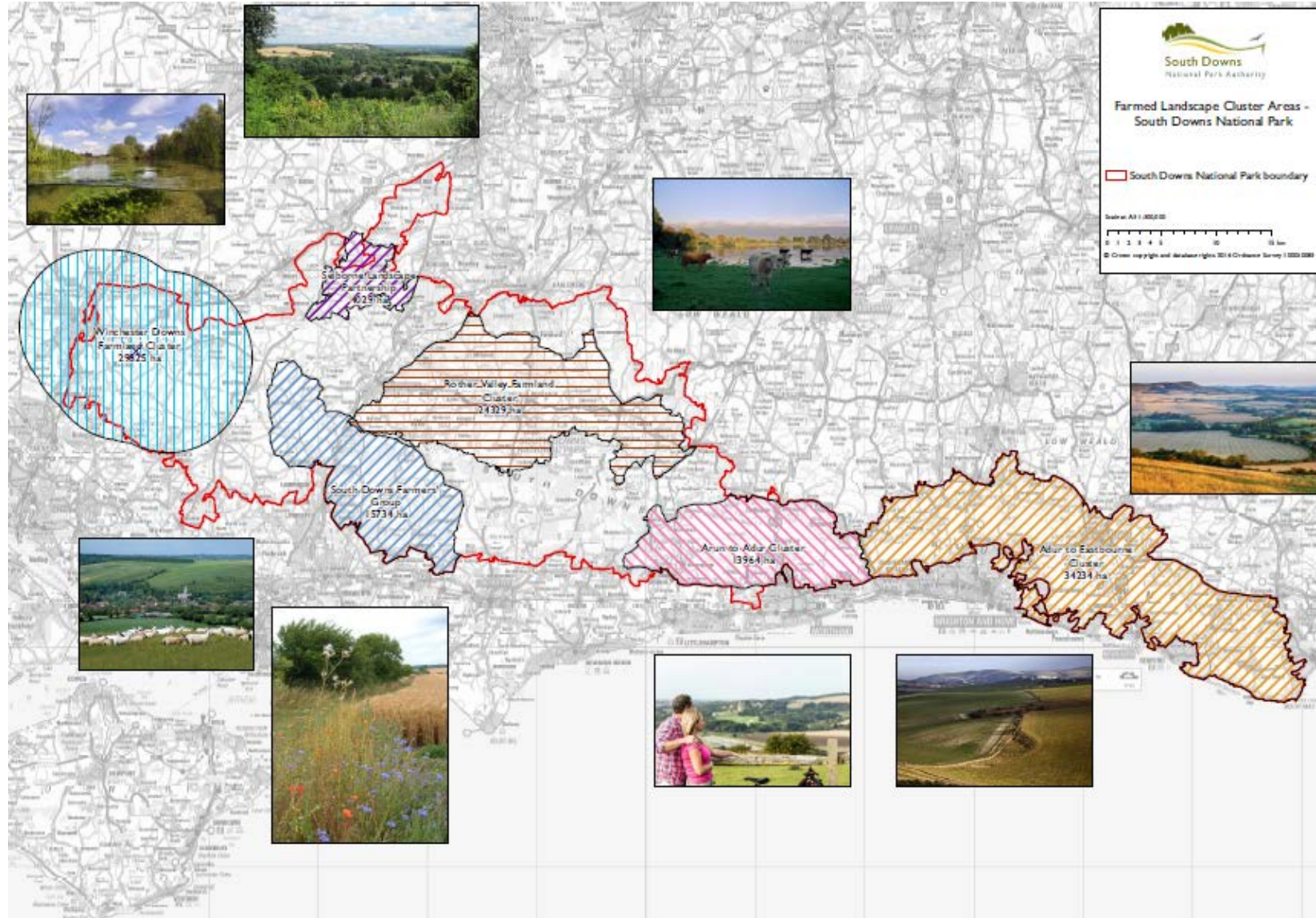


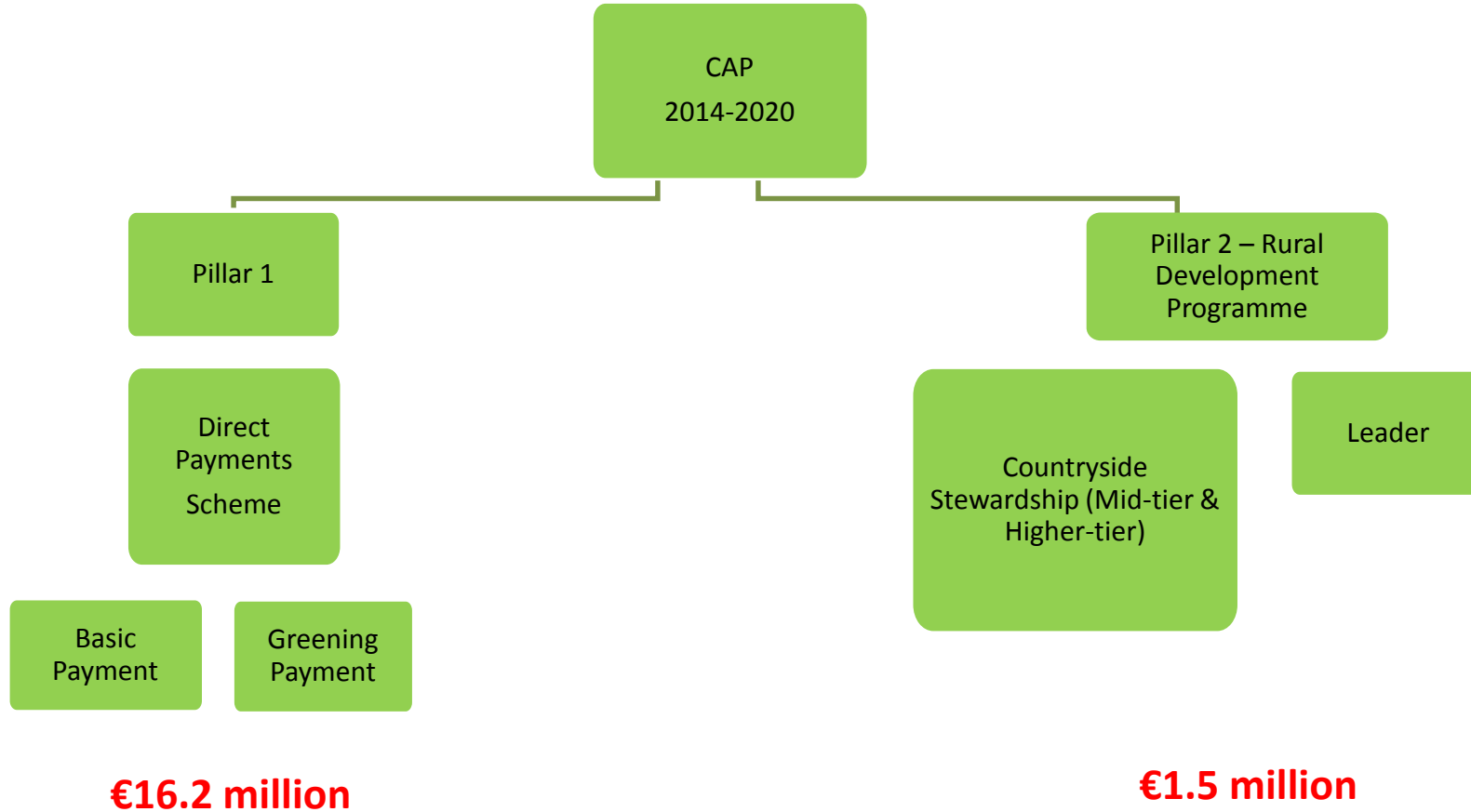
The Future of Farming in the South Downs National Park



Landscape of this National Park is crucially dependent on the future of farming and forestry



The CAP as it stands now



National context

- In 2020 the current **Common Agricultural Policy (CAP)** agreement period ends and the Chancellor's guarantees of continuing subsidy runs out;
- Most are in agreement that simply replicating **CAP** into a **UK Agricultural Policy** after 2020 is not a good idea;
- Lots of consensus about shifting emphasis from income support to public money for public goods, includes **CLA** and **ENGOS**;
- **UK's** withdrawal from the **EU** provides an opportunity, but it will be hard to carve out a level of funding equivalent to current **CAP** as many other spending priorities.



Achieving influence for NPE and SDNPA

- **National Parks England (NPE) Future of Farming Group** has developed national paper and a clear proposition to Defra
- **Aim:** to provide advice to NPE Board on the strategic priorities in relation to farming post the UK's withdrawal from the EU to ensure environmentally sustainable farming in national parks and the pursuit of National Parks Purposes.
- **Develop** outline principles / proposals for a new agri-environment scheme in national parks.
- **SDNPA** to engage with partners to develop a South Downs National Park view of what is needed and what could work



Defra GREEN PAPERS - 12 WEEKS (84 DAYS) CONSULTATION PERIOD

Development of NPE Future of Farming Group Response to Green Papers

SDNP
Members
and
Partnership
Session

South
Downs
Lawton
Group
Session

Farmer /
Landowner
Session
(2/3 per
(6) farm
clusters)

Summary
Report of
three
Sessions and
Forum

SDNP
Members
and
Partnership
Workshop
to finalise
response

NPE
Response to
Green Papers
submitted

SDNP Responses
to Green Papers
submitted

Intranet Forum

Sessions & Forum between days 1 to 50

Day 60

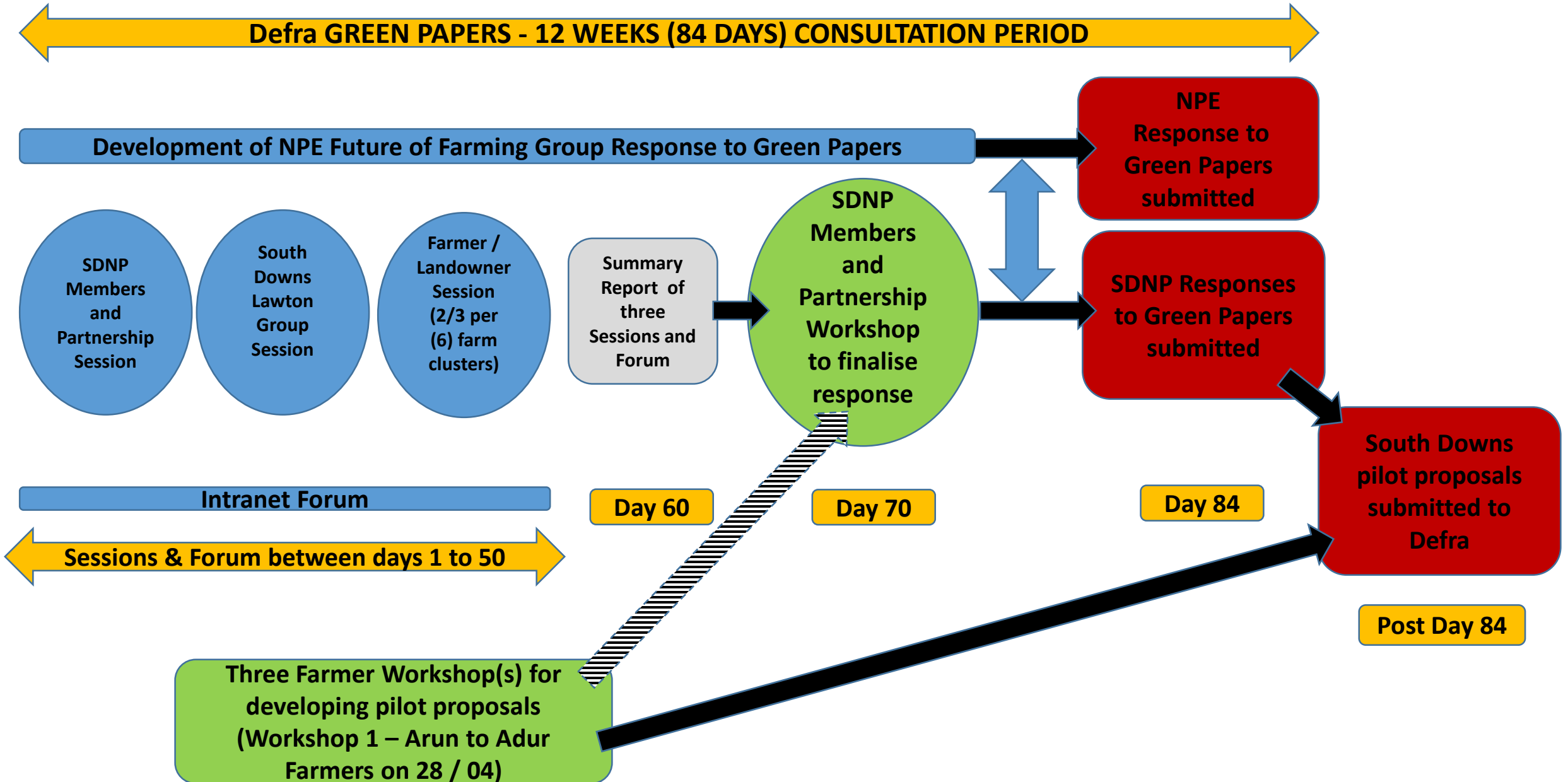
Day 70

Day 84

**South Downs
pilot proposals
submitted to
Defra**

Post Day 84

**Three Farmer Workshop(s) for
developing pilot proposals
(Workshop 1 – Arun to Adur
Farmers on 28 / 04)**



Emerging proposals from the NPE group on Future of Farming

Three levels.

- **National Park FARM Scheme (broad and shallow)**
- **Locally-led FARM plus scheme (narrow and deep)**
- **Wider rural development measures to replace LEADER**
- **Opportunities for new markets eg Payment for Ecosystem Services**
- **Pragmatic transition**
- **Role of the National Park Authorities in delivery**



Current income for land management in the South Downs National Park

Existing Consumers

Commodities,
e.g. grain,
meat, timber

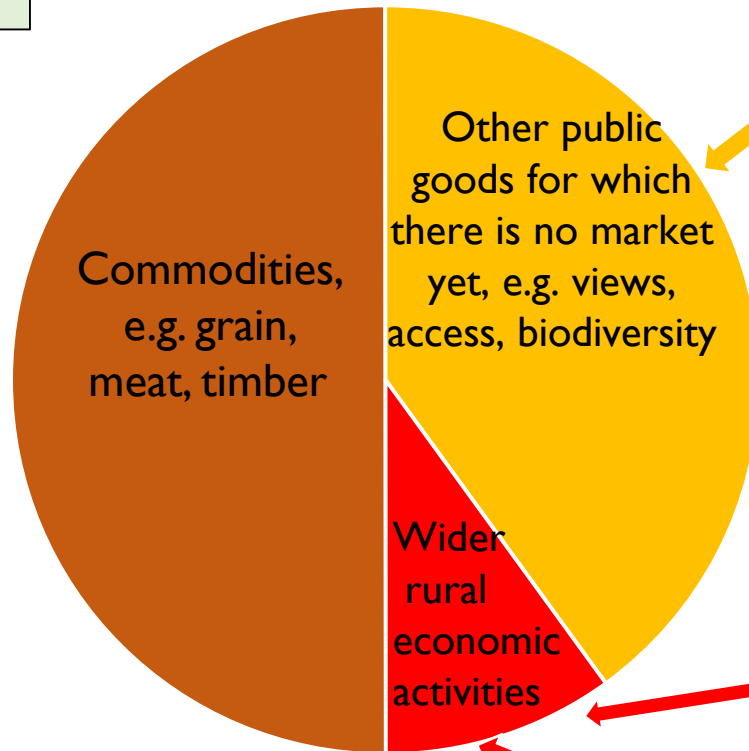
Other public
goods for which
there is no market
yet, e.g. views,
access, biodiversity

Current agri-
environment
scheme

Wider
rural
economic
activities

LEADER,
ERDF funds
etc.

Visitors



Future income for land management in the South Downs National Park

