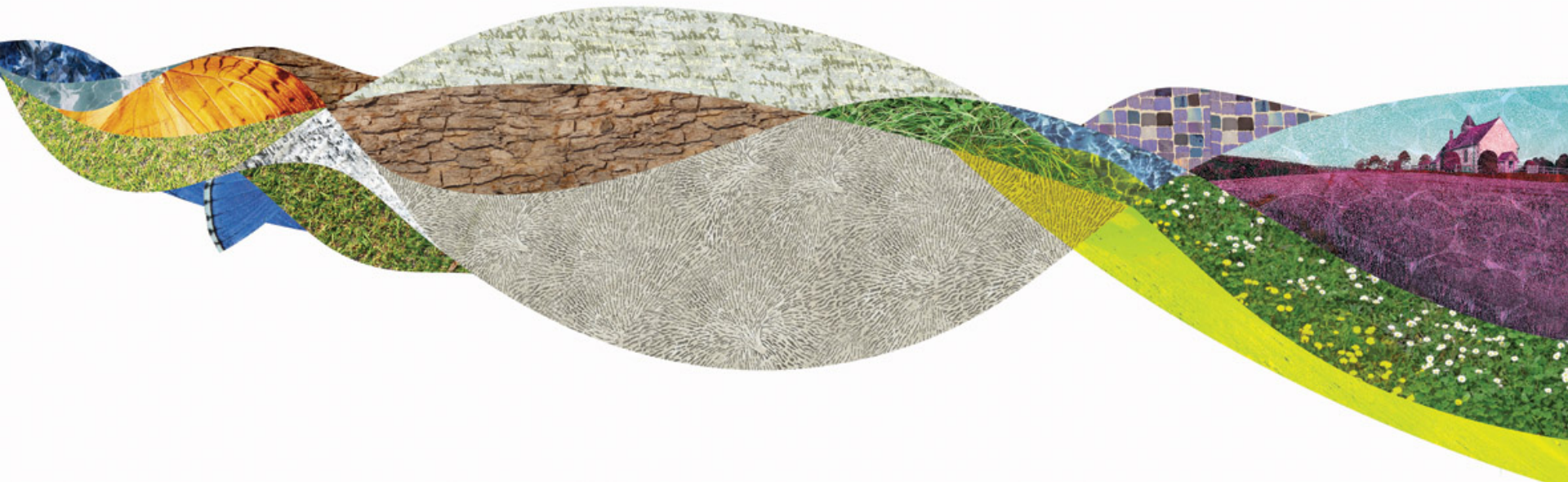
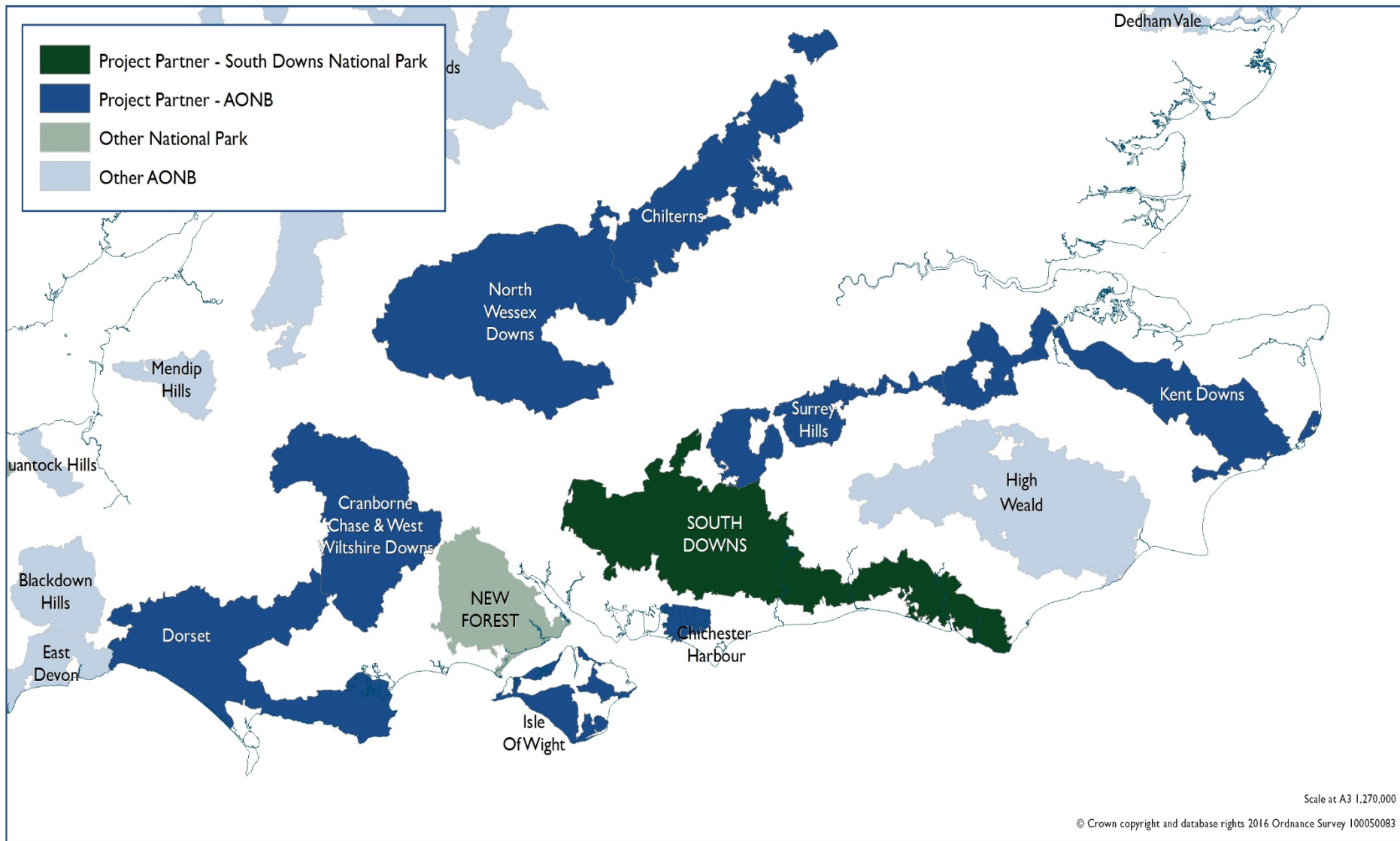


The Big Chalk

Update on progress with the work programme.

Chris Fairbrother
Landscape & Biodiversity Strategy Lead





Project outputs :

Outputs likely to follow:

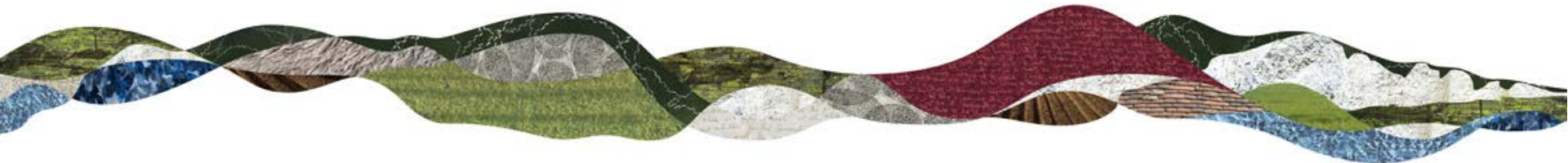
- Logical Framework
- Problem Tree
- Detailed Objectives
- Partnership group
- Project 'Prospectus'
- Research Hub
- Targeted funding bids
i.e/ HLF, Water
Company Investment



Topics covered through the 'Big Chalk' planning sessions :

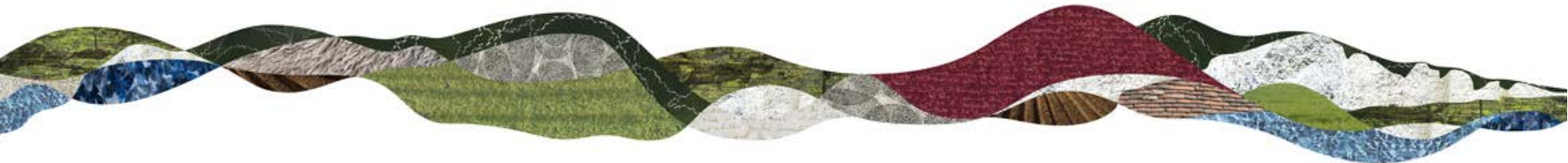


- Strategic Co-ordination across statutory bodies/interest groups
- Development of incentives and Agri-environment Schemes
- Research & Evidence
- Public Awareness and understanding
- Demand Led issues (water resources)
- Water quality issues
- Water quantity issues (covering both low flows and flooding)
- Aquaculture and recreational fisheries



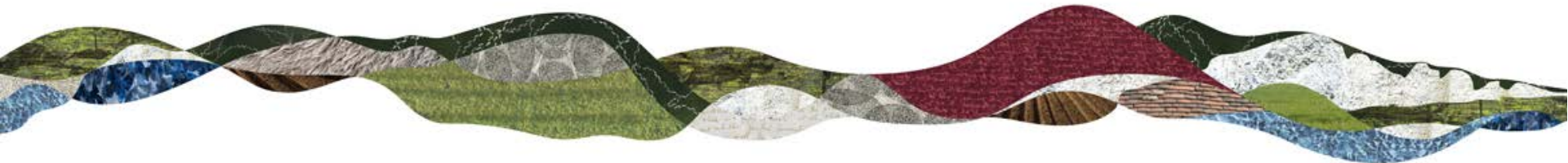
Projects that deliver 'Big Chalk' objectives :

- Landscapes for water – a project focussing on the potential for new woodland planting to protect water sources and provide natural flood management,
- The Channel PES Interreg bid which is looking to pilot 'Payments for Ecosystem Services' (PES) within the Rother Valley and the chalk block that provide Portsmouth Water with its groundwater supply.
- Brighton CHAMP project (Chalk Management Project) aimed at reducing Nitrate levels in aquifers within the Brighton Chalk Block by promoting land management that help improve water quality.
- Bee-Lines – a project that is seeking to enhance pollination services.
- Chalk Grassland grazing project to improve the long-term sustainability of chalk-grassland sites.



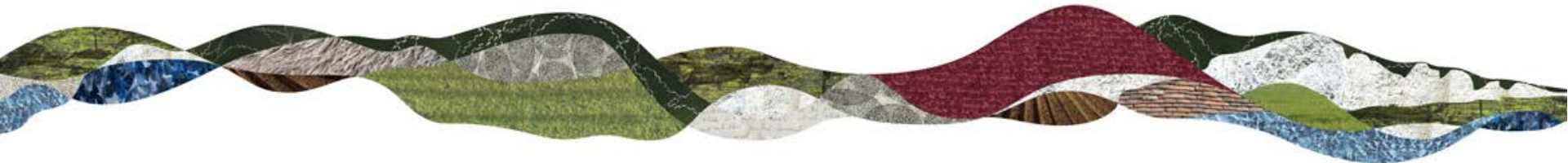
Next Steps...

- Development of a research hub –A workshop session is planned for February to identify which research priorities to go forward as bids (October 2017).
- Landscape Research Group bid to match fund a Big Chalk seminar. The current plan is to link this with the planned SDNPA Research Conference.
- ‘Big Chalk’ work programme/objective tree pre-empted many of the recommendations of the EAC report ‘the future of the natural environment after the EU referendum’.
- Opportunity to use this work to influence the development of new agri-environment schemes, needs to set a higher bar in terms of what is delivered especially in terms of water quality.



Development of the Landscape & Biodiversity Delivery Plan:

- The work is informing the development of the delivery framework for Landscape and Biodiversity delivery plan;
- Detailed planning work done in relation to Chalk, Water and Trees and Woodlands;
- Helping us to set priorities for the plan;
- Highlight key partners to develop projects that deliver shared objectives.



Any Questions?

