

Funding from LEPs and LEADER for businesses and community groups in the South Downs National Park

David Doxford, Sustainable Economy Officer
15 January 2016



Agenda

Serial	Time	Topic	Person
1	12:00-12:05	Welcome	Chair
2	12:05-12:30	Overview of LEPs & LEADER	David Doxford
3	12:30-12:40	Enterprise M3 funding	Deborah Wyatt
4	12:40-12:50	Sussex LEADER	Richard Chalk
5	12:50-13:00	Q&A	Chair
6	13:00-14:00	1to1 surgery session, to discuss possible projects, with: Ken Brown of Fieldfare LEADER Richard Chalk & Caitlin Shardlow of Sussex LEADER Deborah Wyatt of Enterprise M3 re LEP funding David Doxford and Mark Rose of SDNPA	
7	14:00	Depart	

Objectives for the session

- Give attendees an overview of possible funding sources from LEPs and LEADER (in the South Downs National Park) for business and community projects;
- Provide contacts and resources to learn more;
- Allow the opportunity to ask questions;
- Provide space to discuss possible projects/ambitions with funders on a 1 to1 basis.

NB: We won't be covering all the other possible funding sources such as lottery, Interreg/LIFE, charitable trusts etc.



A quick 'health warning'

- This is a complex field - each funding stream has it's own rules and regulations regarding who is eligible, what activities/costs are eligible, timescales, payments, match funding etc.
- Don't assume, ask!
- Some of these schemes are new and we are still developing the knowledge and processes ourselves.
- It's a moveable feast – many programmes will be revised. So what is true today may not be true next year.
- That's why we have a surgery session.....



Glossary

Acronym	Definition		Acronym	Definition
C2C	Coast to Capital LEP		LAG	Local Action Group
DEFRA	Dept. of Environment, Food & Rural Affairs		LDS	Local Development Strategy
EAFRD	European Agricultural Fund for Rural Development		LEP	Local Enterprise Partnership
EM3	Enterprise M3 LEP		LGD	Local Growth Deal
ERDF	European Regional Development Fund		SEP	Strategic Economic Plan
ESF	European Social Fund		SME	Small/Medium Enterprise
ESIF	European Structural & Investment Funds		WARR	Wealden And Rother Rural

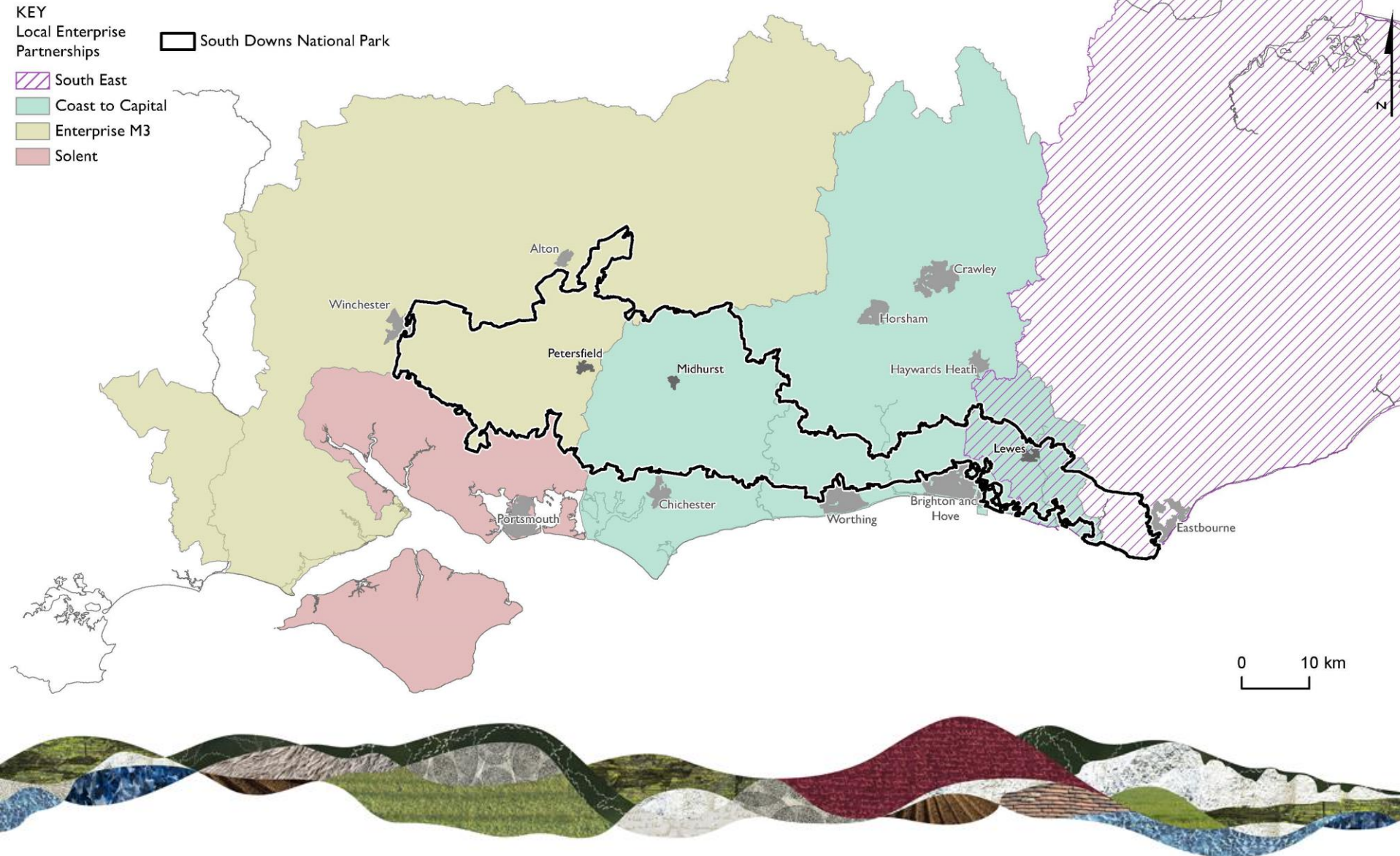
What's an SME?



Enterprise category	Headcount: Annual Work Unit (AWU)	Annual turnover	or	Annual balance sheet total
Medium-sized	< 250	≤ €50 million (in 1996 € 40 million)	or	≤ €43 million (in 1996 € 27 million)
Small	< 50	≤ €10 million (in 1996 € 7 million)	or	≤ €10 million (in 1996 € 5 million)
Micro	< 10	≤ €2 million (previously not defined)	or	≤ €2 million (previously not defined)



Local Enterprise Partnerships



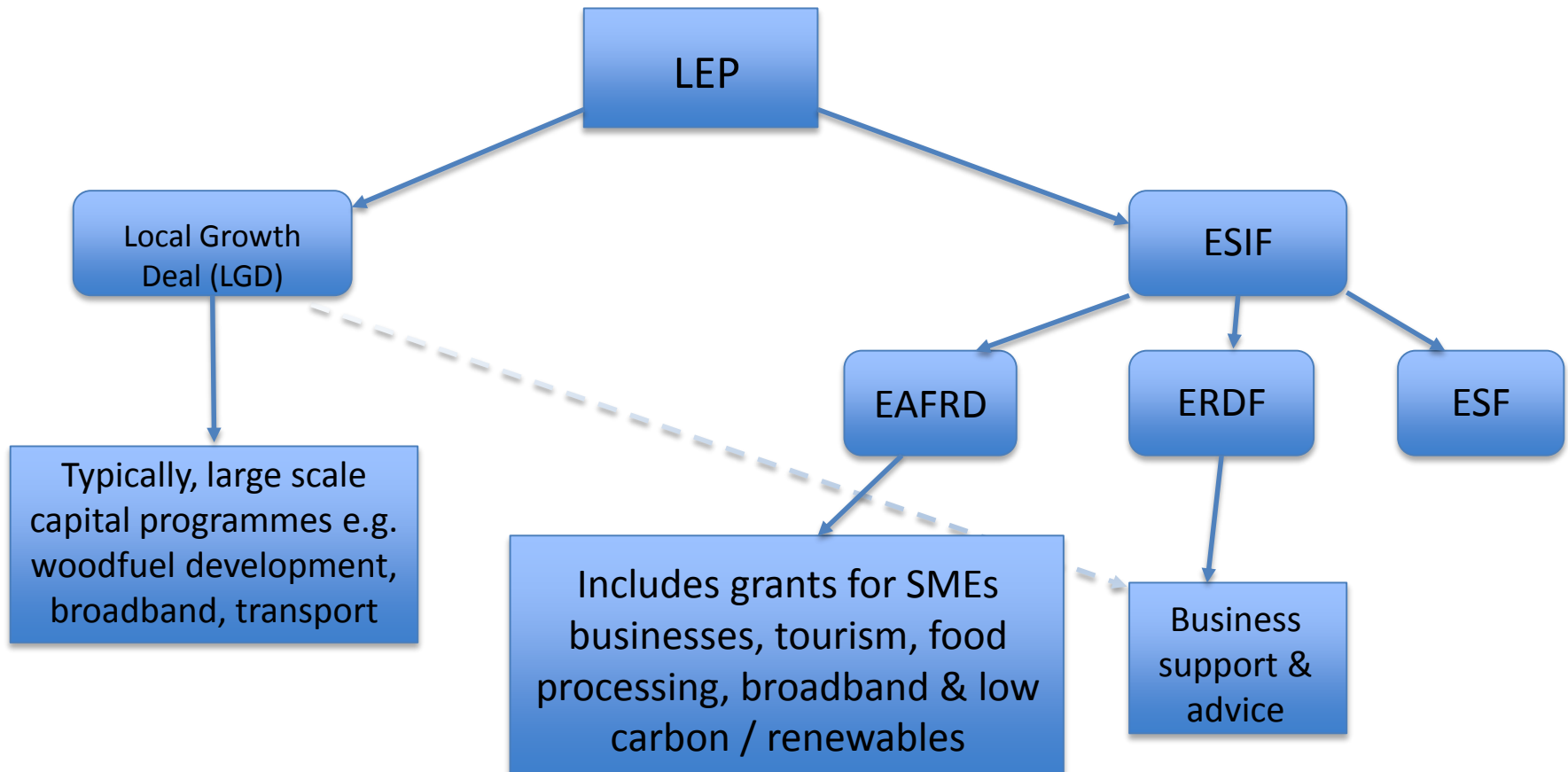
Local Enterprise Partnerships (LEPs)

What is a LEP?

- LEPs are partnerships bringing together leaders from the business, public and not-for-profit sectors to provide the vision, knowledge and strategic leadership needed to support private sector growth
- Set up in 2011 by the Department for Business, Innovation and Skills and delivering some of the functions previously carried out by the regional development agencies
- There are 39 local enterprise partnerships across England
- They set out the priorities for the area in a Strategic Economic Plan (SEP)
- They also produce a European Structural & Investment Funds (ESIF) Strategy and a Rural Statement.



But which bits help me?



Business support via Growth Hubs

<http://www.c2cbusiness.org.uk/>



enterprise **m3**
GROWTHHUB

Getting started | Information bank | Resource network | Sectors | Training | Events | News | About us | Enterprise M3 LEP

OUR FOCUS IS YOUR GROWTH

Search



STARTING
your business

Expert start up advice



GROWING
your business

Expert growth advice



The business support portal of
coast to capital
local enterprise partnership

[Home](#) [Support](#) [Events](#) [About](#) [Feedback](#) [Contact](#)

Find business support for:

- Those thinking of starting a business
- Start-ups (up to 2 years trading)
- Established businesses (under 250 employees)
- Large businesses (over 250 empl.)

 Helpline **01403 333 840**

[Local support contacts](#)

What are you looking for?

- Better Business for All
- 1-2-1 advice & guidance
- Events & networking
- Funding & grants
- Membership & representation
- Premises & facilities
- Training & skills

[Find support now!](#)

Business Support Help line

[0300 456 3565](tel:03004563565) Mon to Fri - 9am to 6pm

<http://www.enterprisem3growthhub.co.uk/>



C2C Grants

Grant Funding

Through the Coast to Capital Growth Deal we have a number of grant schemes available to businesses. These schemes are either open for applications now or will be opening soon. To read more about each of the schemes available please click on the relevant heading below.

- 
- **Digital Connectivity Grant Programme** - £225,000 is being made available as part of a pilot grant project to improve digital connectivity for groups of businesses in West Sussex. The application deadline is 15th January 2016, 17:00. [Click here for more information.](#)
 - **Wood Processing Grant Programme** - A capital grant of between £35,000-£150,000 to support enterprising timber businesses. Deadline for submission is 10am on Monday 30th November 15. [Click here for more information.](#)
 - **West Sussex LEADER Grants**- The LEADER scheme is part of the Rural Development Programme. Grant funding is awarded to local businesses and organisations to help them carry out projects which create jobs and benefit the rural economy. [Click here for more information.](#)

[Download the CS LEADER leaflet.](#)

[Download the SDCP LEADER leaflet.](#)

- 
- 
- **Coast to Capital Region Small Grants**- A Capital grant of between £5,000-£20,000 to support businesses planning to create new jobs. **NOW CLOSED**- If you would like to be kept informed about future grant funding rounds please email grants@coast2capital.org.uk and we will add your details to a database.
 - **Coast to Capital Region Business Growth Grants**- A Capital grant of between £15,000-£100,000 to support high growth businesses planning to create new jobs. **NOW CLOSED**- If you would like to be kept informed about future grant funding rounds please email grants@coast2capital.org.uk and we will add your details to a database.

SUPPORTING BUSINESS WITHIN THE AREA

Visit our business support portal for a list of business support and events available in the Coast to Capital area.

[See our Business Navigator](#)



If you provide business support or events and are interested in being listed on the Business Navigator please email us using the link below

[Join our Business Navigator](#)

<http://www.coast2capital.org.uk/helping-business-growth/grant-funding.html#sthash.Berrb8E4.6d7na6Rc.dpbs>

Enterprise M3 Funding

- Growing Enterprise Fund
<http://www.enterprisem3.org.uk/growing-enterprise-fund>
- Local Growth Deal
- ERDF, ESF and EAFRD – ongoing calls throughout the year.



EAFRD Calls

✉ [Subscribe to email alerts](#)

Search

Fund state

1 selected

☒ Open

☐ Closed

Type

Location

1 selected

☐ East Midlands

☐ West Midlands

☐ East of England

☒ South East

☐ South West

<https://www.gov.uk/european-structural-investment-funds>

5

calls which are **Open** in **South East** from **European Agricultural Fund for Rural Development**

Business Support: call in mid and north Hampshire and South West Surrey - Enterprise M3 (10RD15BS0002)

Open South East Closing date: 8 January 2016

Business support : call in Buckinghamshire, Thames Valley (02RD15BS0003)

Open South East Closing date: 8 January 2016

Tourism: call in Buckinghamshire, Thames Valley (02RD15TO0002)

Open South East Closing date: 8 January 2016

Tourism: Call in mid and north Hampshire and South West Surrey - Enterprise M3 (10RD15TO0001)

Open South East Closing date: 8 January 2016

Business Support: call in mid and north Hampshire and South West Surrey - Enterprise M3 (10RD15BS0003)

Open South East Closing date: 8 January 2016

EAFRD Calls – an example

Tourism: Call in mid and north Hampshire and South West Surrey - Enterprise M3 (10RD15TO0001)

This call invites applications for investments that create jobs and grow the tourism sector in the rural areas of the Enterprise M3 LEP area.

This call seeks to support activities that:

- develop new rural visitor attractions
- develop and improve existing rural visitor attractions to encourage more visitors to stay for longer and spend more

Applications that create new attractions are a priority for this call. The call does not provide support for:

- creating new visitor accommodation
- developing existing visitor accommodation
- creating destination plans

Grants will be available for this call from £50,000 up to €200,000 (approximately £140,000). State aid rules will apply which may affect the amount of grant offered. Further details on state aid rules are available from gov.uk.

Applicants can apply for a grant to cover up to 40% of the project's total eligible costs. The minimum total eligible cost of a project for this call would therefore be £125,000



LEADER

- LEADER is a French acronym (*Liaison Entre Actions de Développement de l'Economie Rurale*); it is an EU initiative for rural development, funded through EAFRD.
- Open to farmers, foresters, small & micro rural businesses, community groups.
- Grants of £2.5k to £50k at max 40%-80% intervention rate (depending on the measure used); it is mainly for capital items.
- Projects must meet one of six Defra priorities:
 - support micro and small businesses and farm diversification
 - boost rural tourism
 - increase farm productivity
 - increase forestry productivity
 - provide rural services
 - provide cultural and heritage activities



LEADER and SDNP – funding

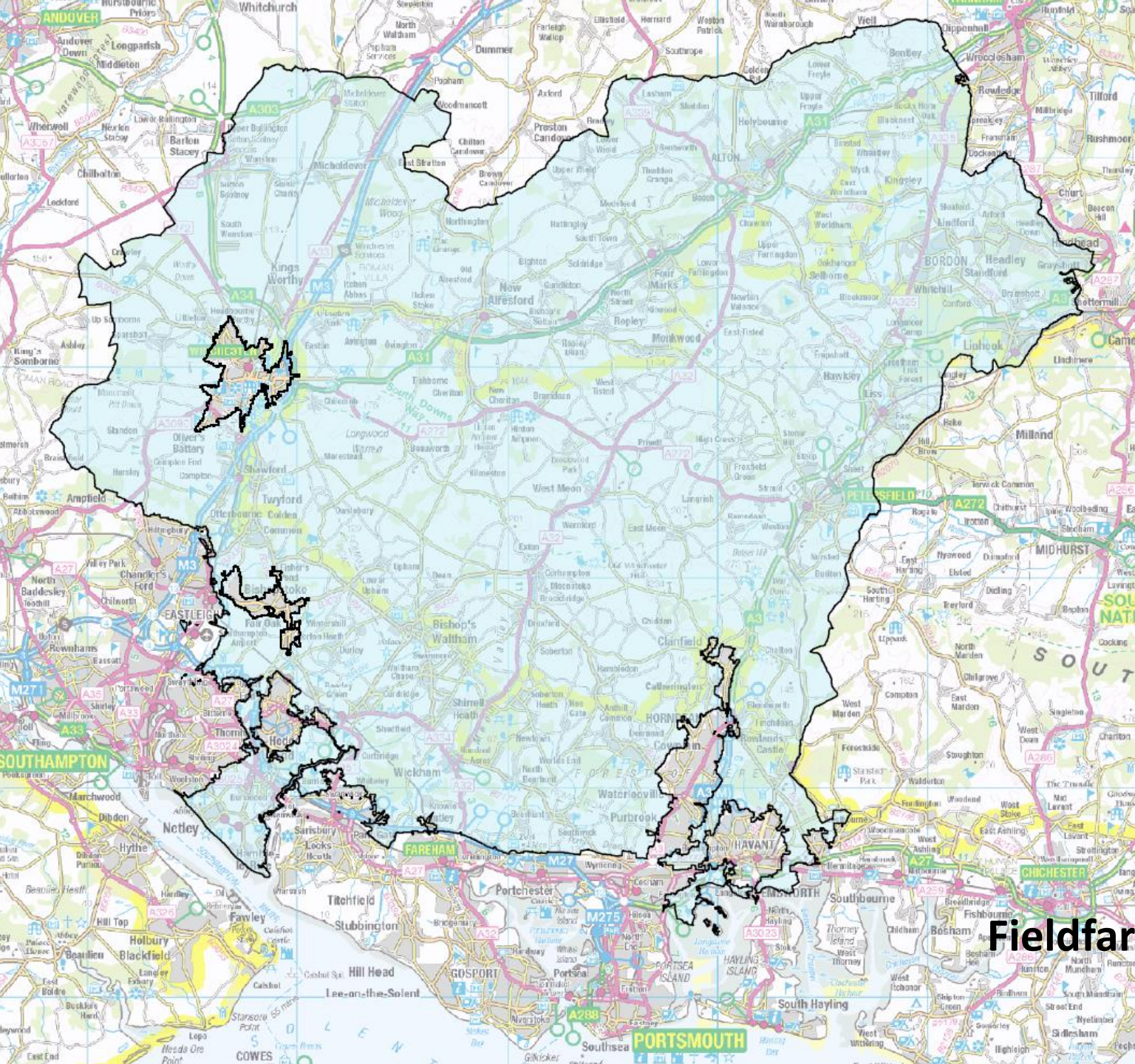
Local Action Group (LAG)	Area	LEADER Funding
Fieldfare (F)	Rural East Hants around Winchester, north of Portsmouth & Havant; includes Petersfield	£1.6m
Sussex Downs & Coastal Plain (SDCP)	Rural parts of Chichester & Arun Districts, rural parts of Hayling Island	£1.492m
Central Sussex (CS)	Rural parts of Horsham, Lewes and Mid-Sussex Districts and Lewes	£1.705m
Wealden & Rother Rural (WARR)	Rural parts of Wealden & Rother Districts	£1.472m
Total funding		£6.269m



Local Action Groups (LAGs)

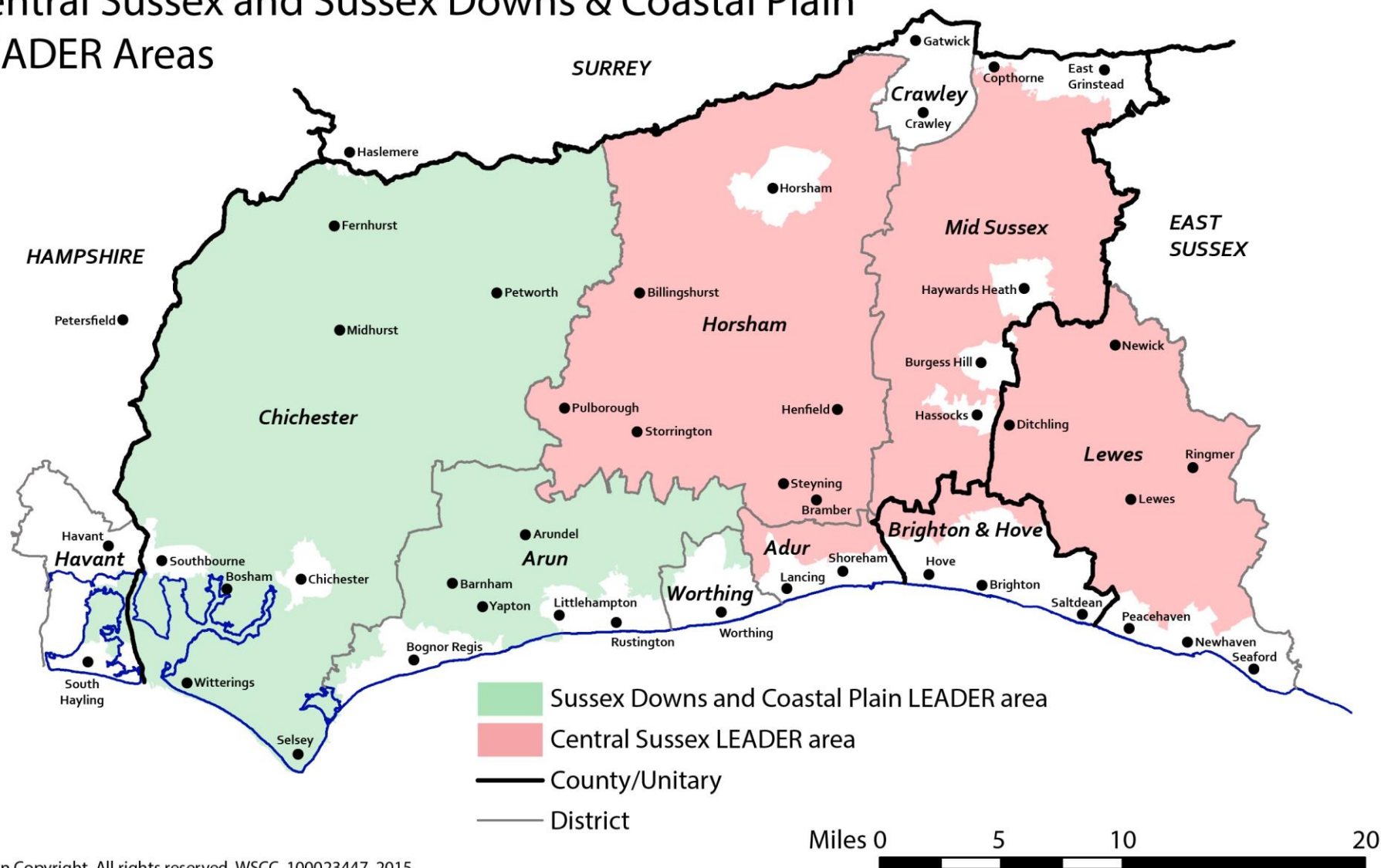
- A LAG is made up of people from the local community and the local public and private sector. Each LAG decides which projects they will fund in their area by producing a Local Development Strategy (LDS).
- There are four LAGs across the South Downs National Park, each has ~£1.5m for the current programme which runs 2014-2020.
- Currently a two stage application (outline/full), all money is paid retrospectively, around 5 months from outline application to grant letter.
- Continuously open until ~March 2020.





Fieldfare LAG area

Central Sussex and Sussex Downs & Coastal Plain LEADER Areas



WARR Leader Area

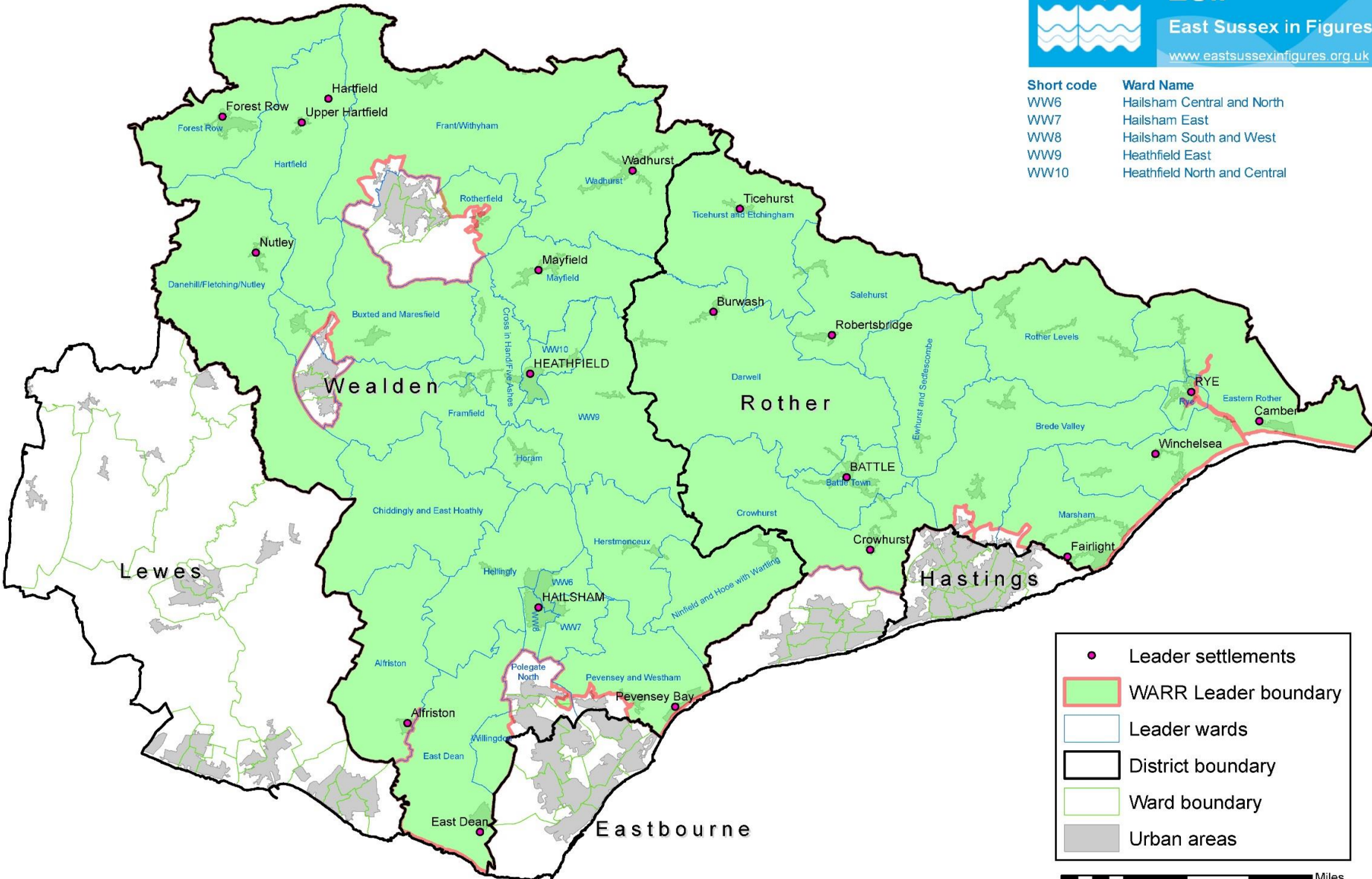


ESiF

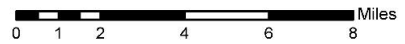
East Sussex in Figures

www.eastsussexinfigures.org.uk

Short code	Ward Name
WW6	Hailsham Central and North
WW7	Hailsham East
WW8	Hailsham South and West
WW9	Heathfield East
WW10	Heathfield North and Central



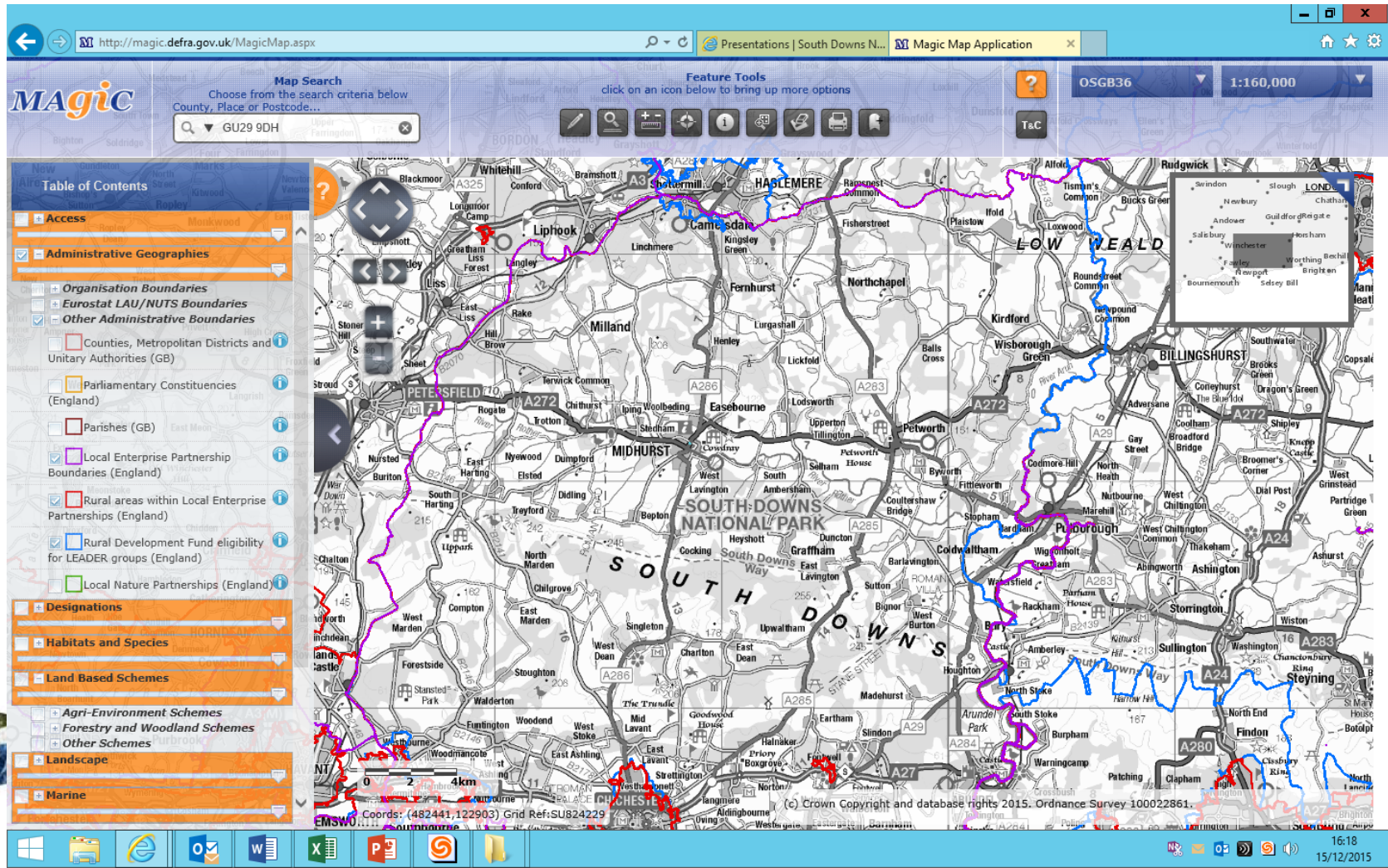
- Leader settlements
- WARR Leader boundary
- Leader wards
- District boundary
- Ward boundary
- Urban areas



Which LAG am I in?

Check on MAGIC:

<http://magic.defra.gov.uk/MagicMap.aspx>



Do I live in the National Park?

<https://www.southdowns.gov.uk/discover/communities/do-i-live-in-the-national-park/>

Please ensure that you read the advisory notes below as the boundary line on this map is not wholly accurate at larger scales and for certain properties for logistical reasons.

Address Search



Research

Why are we a National Park?

Wildlife

Help on our website

<https://www.southdowns.gov.uk/care-for/funding-for-your-project/business-and-economic-development-grants/>

BUSINESS AND ECONOMIC DEVELOPMENT GRANTS



LEADER OVERVIEW

All of the Local Action Groups in the National Park have now launched their programmes and will run until 2020.

LEADER grant funding is part of the Rural Development Programme for England (RDPE). This aims to improve the competitiveness of farming and forestry, support a diverse and successful rural economy and help to develop vibrant and thriving rural communities.

Conserving our Landscape

Funding for your project

- South Downs National Park Authority Grants
- Landfill Communities Grants
- Business and Economic Development Grants
- Community Grants
- Local Authority Grants
- Useful Funding Links

Have Your Say

Supporting Communities & Business

Volunteering

Useful contacts & links



Organisation	Name	E-mail/Tel	Website
South Downs National Park Authority	David Doxford (LEP/LEADER) Mark Rose (Other funding)	david.doxford@southdowns.gov.uk mark.rose@southdowns.gov.uk 01730 814810	https://www.southdowns.gov.uk/care-for/funding-for-your-project/business-and-economic-development-grants/
Fieldfare LAG	Ken Brown	KBrown@winchester.gov.uk 01962 848588	www.Fieldfareleader.org.uk
Sussex LAGs	Richard Chalk	richard.chalk@westsussex.gov.uk 0330 2223845	http://www.businesswestsussex.co.uk/leadergrants
WARR LAG	Don Cranfield	don.cranfield@plumpton.ac.uk 01273 892031	http://www.warrpartnership.org.uk/index.htm
Enterprise M3	http://www.enterprisem3.org.uk/ or call 01962 846755		
Coast to Capital	http://www.coast2capital.org.uk/ or call 01403 333840.		

Funding from LEPs and LEADER for businesses and community
groups in the South Downs National Park
David Doxford, Sustainable Economy Officer

This presentation will be available @
www.southdowns.gov.uk



Funding Streams for Rural Business

**Deborah Wyatt
Enterprise M3**



Enterprise M3 - Working to Support Rural Areas

- Rural Action Group
- Woodfuel hub project



- Growing Enterprise Fund
- Digital Skills in the High Street

Types of European Funding available to Enterprise M3

- Three types of European funding – ESF, ERDF, EAFRD
- ESF focus on skills/employment and social inclusion
- ERDF focus on enterprise, innovation and low carbon
- EAFRD for rural areas only
 - i). building knowledge and skills
 - ii). funding and developing micro and small rural businesses
 - iii). funding small scale renewable investments
 - iv). funding broadband investments (2017 onwards)
 - v). supporting tourism in rural areas.

European Agricultural Fund for Rural Development (EAFRD)

For Enterprise M3, the first call for EAFRD is underway

	EAFRD allocation £k
SME business development grants (for small and micro businesses, up to 50 FTE)	620
Rural tourism grants	465
Grants for food/drink processing businesses	465
Total	1550 (35% of total fund)

Key points to note

- Minimum grant of £50k up to £140k maximum
- Capital funding only, not revenue
- Maximum intervention rate of 40%, therefore applicants must match fund 60%
- Use for high economic impact, improving productivity and creating jobs.
- DEFRA issue specifications, handle all enquiries, review and approve applications and are the Managing Authority for the funding

European Agricultural Fund for Rural Development (EAFRD)

For Enterprise M3, the focus will be in the following areas;

- Strategic projects designed to have a significant impact on the Enterprise M3 economy and complement work of Local Action Groups/LEADER/other rural funding streams
- Capital projects that add value to funding new and developing non-agricultural businesses providing the greatest return in terms of job creation and sustainability

Further details

www.enterprisem3.org.uk

info@enterprisem3.org.uk

01962 846755

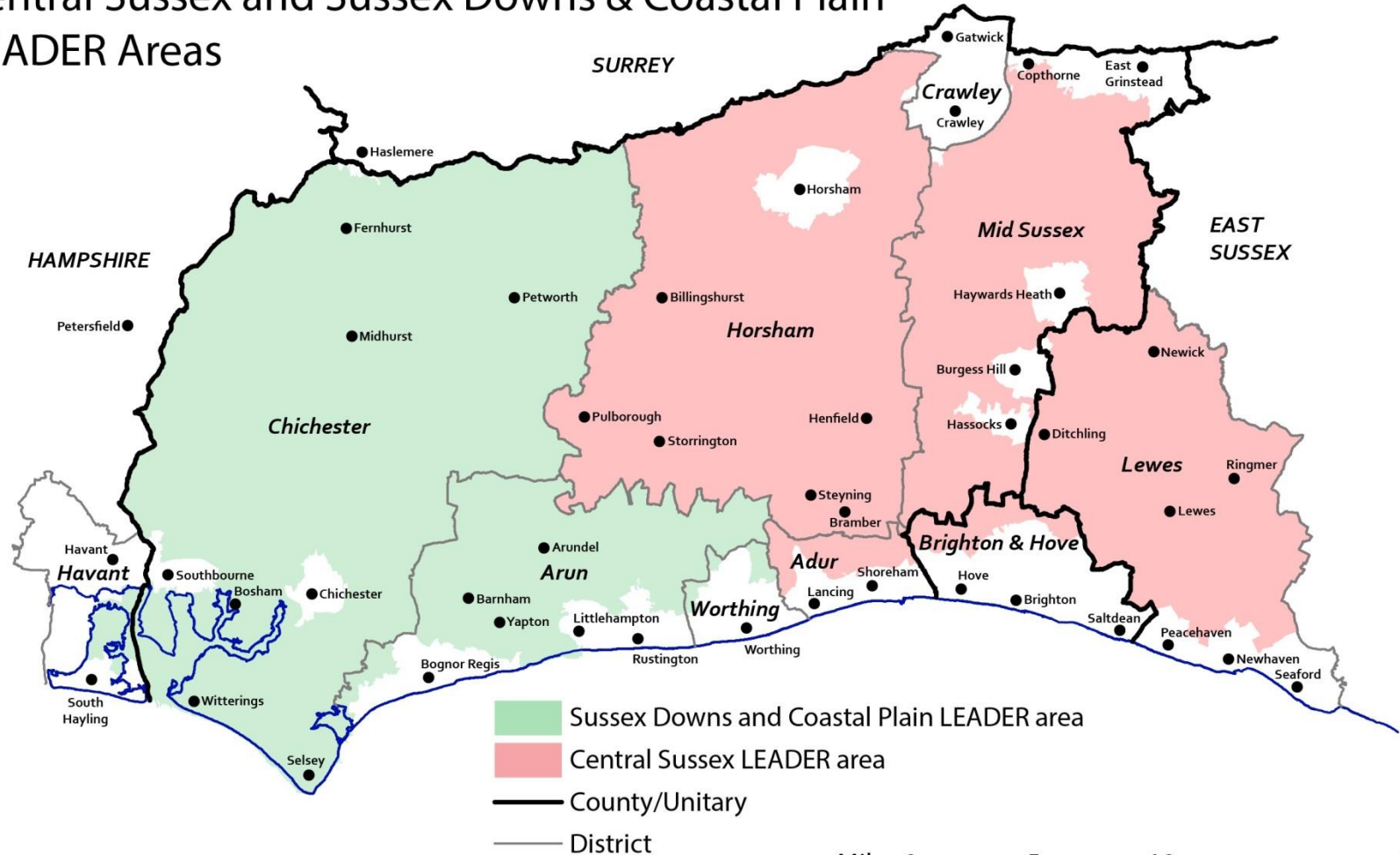




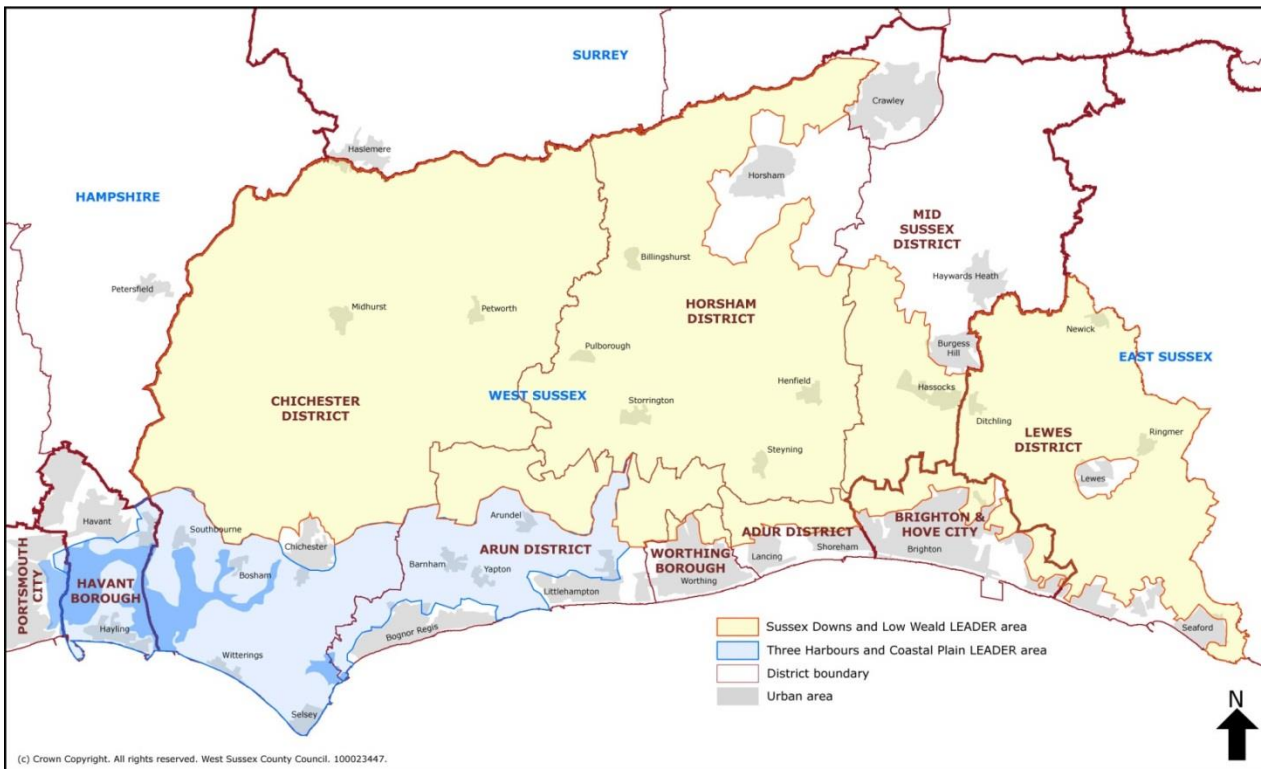
LEADER grants – supporting the rural economy

January 2016
Richard Chalk
LEADER Programme Manager
West Sussex County Council

Central Sussex and Sussex Downs & Coastal Plain LEADER Areas



Sussex Downs & Low Weald and Three Harbours & Coastal Plain LEADER 2008-13



2 Local Action Groups

**262,000 population
(2001 census)**

£2.8m awarded

153 projects

Average grant £18,729

**Total value of projects
£9.1m**

Outputs for the rural economy 2008-13

New jobs created	142
Average grant per job created	£10,895
Existing jobs sustained	320
Average grant per job sustained	£5,264
Existing businesses supported	125
New business start ups	13





Sussex Downs & Low Weald and Three Harbours & Coastal Plain LEADER Projects in the National Park



	Amount Awarded	Projects	Average Grant
Farming	£494,035	23	£21,480
Forestry	£103,854	10	£10,385
Other small business	£126,788	8	£15,849
Community	£200,884	12	£16,740
Tourism	£103,225	7	£14,746
Total	£1,028,786	60	£17,146



Types of projects funded in SDNPA



Farming:

Processing and adding value, especially dairy and meat.

Vineyards – winery equipment.

Diversification – farm shops, tea rooms, open farm visits at lambing time.



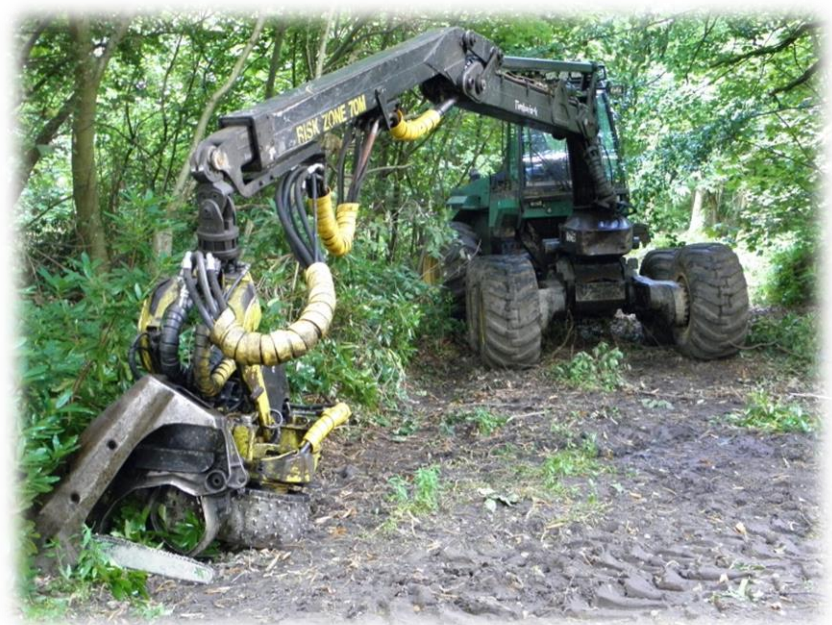


Types of projects funded in SDNPA



Forestry:

Mainly equipment – firewood processors, log splitters, forestry tractors, harvesters, charcoal retort.





Types of projects funded in SDNPA



Community:

Community village stores – Lodsworth, Slindon, Milland.

Village hall and other community facility improvements.





Types of projects funded in SDNPA



Tourism - were all community based, including:

Cycle hire, museums, branding and promotion of a market town (Arundel), infrastructure.





New LEADER 2015-20



Part of £3.5bn Rural Development Programme.

£138m allocated to 80 Local Action Groups in England.

To create jobs and growth in rural areas.

Much greater focus on the economy - 70% of funding must directly support the rural economy, the remaining 30% also must demonstrate it is contributing to the local rural economy.



Projects and funding 2015-20



Opened for applications November 2015.

Average grant £15,000 to £20,000 (in Sussex).

Primarily capital – equipment, premises etc.
NOT running costs.

Maximum support rates:

40% for business, remainder own capital or loan finance.
80% for community (100% in some LEADER areas).

Grants paid against confirmed expenditure.



Eligibility



- Farmer or grower.
 - Micro or small enterprise (up to 50 employees, t/o up to €10m).
 - Social enterprise.
 - New business start up.
 - Formally constituted community group.
 - Parish or town council.
-
- Project must be located in LEADER area.
 - Must meet at least one national and local priority.



National Policy 2015-20



LEADER priorities:

Increasing farm productivity

Support for micro/small businesses and farm diversification

Support for rural tourism

Provision of rural services

Cultural and heritage activity

Increasing forestry productivity



Increasing farm productivity

Grants for:

Projects to improve the overall performance and sustainability of an agricultural holding.

Investments to support animal health and welfare improvements.

Processing, developing and marketing agricultural products –
adding value.

Must be above standard agricultural practice.

Usually up to 40% grant rate.



Support for micro/small businesses and farm diversification

Grants to develop or start small businesses, including social enterprises.

Grants for farm diversification projects.

Up to 40% grant rate.



Support for rural tourism

Small businesses, community groups, local authorities, public-private partnerships.

Projects that develop high quality visitor products and services, link providers, extend the season, encourage visitors to stay.

Grant rate up to 40% for commercial and 80% for non commercial (100% in some LEADER areas).



Provision of rural services

Small businesses, community groups, public-private partnerships, (local authorities in exceptional circumstances).

Projects improving infrastructure and access to services. Must make a contribution towards growing local economy.

Grant rate usually up to 80% (100% in some LEADER areas).



Cultural and heritage activity

Community groups, landowners, (local authorities in exceptional circumstances).

Promotion, enhancement and restoration of cultural assets where this promotes growth in the visitor economy and creates a sense of local identity.

Grant rate up to 80% (100% in some LEADER areas).



Increasing forestry productivity

Small and medium sized forestry contractors.

Owners of private woodland.

Investments in machinery and equipment to help the production, extraction, processing and marketing of timber and non-timber forest products.

Grant rate up to 40%.



Local Priorities



LEADER is local.

Local Action Groups make decisions.

Each LAG has local strategy for its area approved by Defra.

Projects also need to meet local priorities set by LAGs.

Details from website, LEADER officers and in Handbook.



Process



Outline application
Checked for eligibility and fit with priorities
Feedback
Full application
Appraisal
Project Selection Panel
Offer letter (contract)
Project monitoring
Grant paid on completion



Hints and tips



Allow time - contact us early.

Grants paid in arrears so projects need to think about covering short-term cash-flow.

How much grant does the project really need to proceed? Will need to justify.

Assume 3 quotes for all project items.

Full applications require evidence that applicants have done their homework and for projects that will have income and expenditure, detailed cash-flow forecasts.

Process particularly tests NEED for project and IMPACT, including on competitors – need to consider these carefully.

Speak to us before you apply - we are here to help.