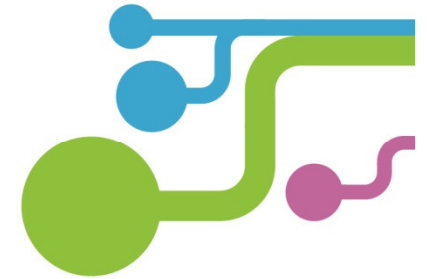


# Bringing better, faster broadband to West Sussex



Better Connected update  
Digital Access Summit 20.11.15

Sarah Bazen, Broadband Delivery Manager  
Kevin Carter, Executive Officer



[www.westsussex.gov.uk/broadband](http://www.westsussex.gov.uk/broadband)

# Better Connected project aims

**We aim for the majority of residents and businesses to be able to access superfast fibre-based broadband speeds of 24Mbps by spring 2016.**

Project builds on the current commercial roll out of broadband technology:

- more than 90% of properties in West Sussex will have access to fibre-based broadband infrastructure
- all properties in the areas which are eligible for funding through the project should be able to access basic broadband speeds of a minimum of 2Mbps.

**Government has now set a new target of 95% coverage of the UK by 'superfast' broadband by the end of 2017.**



[www.westsussex.gov.uk/broadband](http://www.westsussex.gov.uk/broadband)

# Who's paying for it?

Aligned to West Sussex economic strategy to underpin economic growth (retain & grow businesses in West Sussex) and to help social inclusion (residents access public services, work, and entertainment more easily)

- £6.26m of funding has been allocated by WSCC
- £6.26m funding from central government
- BT contribution more than £7m.

To extend coverage of 'superfast' fibre broadband to 95% of the county we have limited additional funding of £2.5million from WSCC and BDUK.

**Aim to achieve the best possible coverage of broadband for the county in the most cost effective way**



[www.westsussex.gov.uk/broadband](http://www.westsussex.gov.uk/broadband)

# Technology

- A mix of Fibre to the Cabinet (FTTC) and Fibre to the Premises (FTTP)
- FTTC
  - Siting a new cabinet (DSLAM) next to/near to the existing cabinet
    - power required
    - may require new ducting
  - New cabinets will also be needed where previously copper lines have run from the exchange directly to a building.
- FTTP
  - No cabinets, fibre direct from the exchange
  - Use of existing ducting or laying of new ducting
  - Could use existing or new telegraph poles to go overhead.



# Timeline

- May 2013 – contracted BT to deliver new broadband infrastructure to >90%
- Autumn/Winter 2013/14 – detailed surveys, design and network planning
- May 2014 onwards – first services ‘live’
- Three year roll-out to March 2016 through eight overlapping phases
- June 2015 – new contract with BT to extend coverage of ‘superfast’ to 95%
- By September 2016 – detailed surveys, design and network planning
- Coverage of ‘superfast’ broadband services to 95% by end of December 2017



[www.westsussex.gov.uk/broadband](http://www.westsussex.gov.uk/broadband)

## Progress to date to >90%

- Surveys now all completed for phases 1 – 7, barring a handful of cabinets which have been deferred or proving problematic
- Over 52,000 more homes and businesses can now access better, faster broadband
- 305 cabinets and 31 FTTP sites all ready for service, majority now 'live'
- 2015/16 is our most ambitious year of build with engineers working in every district of the county...



[www.westsussex.gov.uk/broadband](http://www.westsussex.gov.uk/broadband)

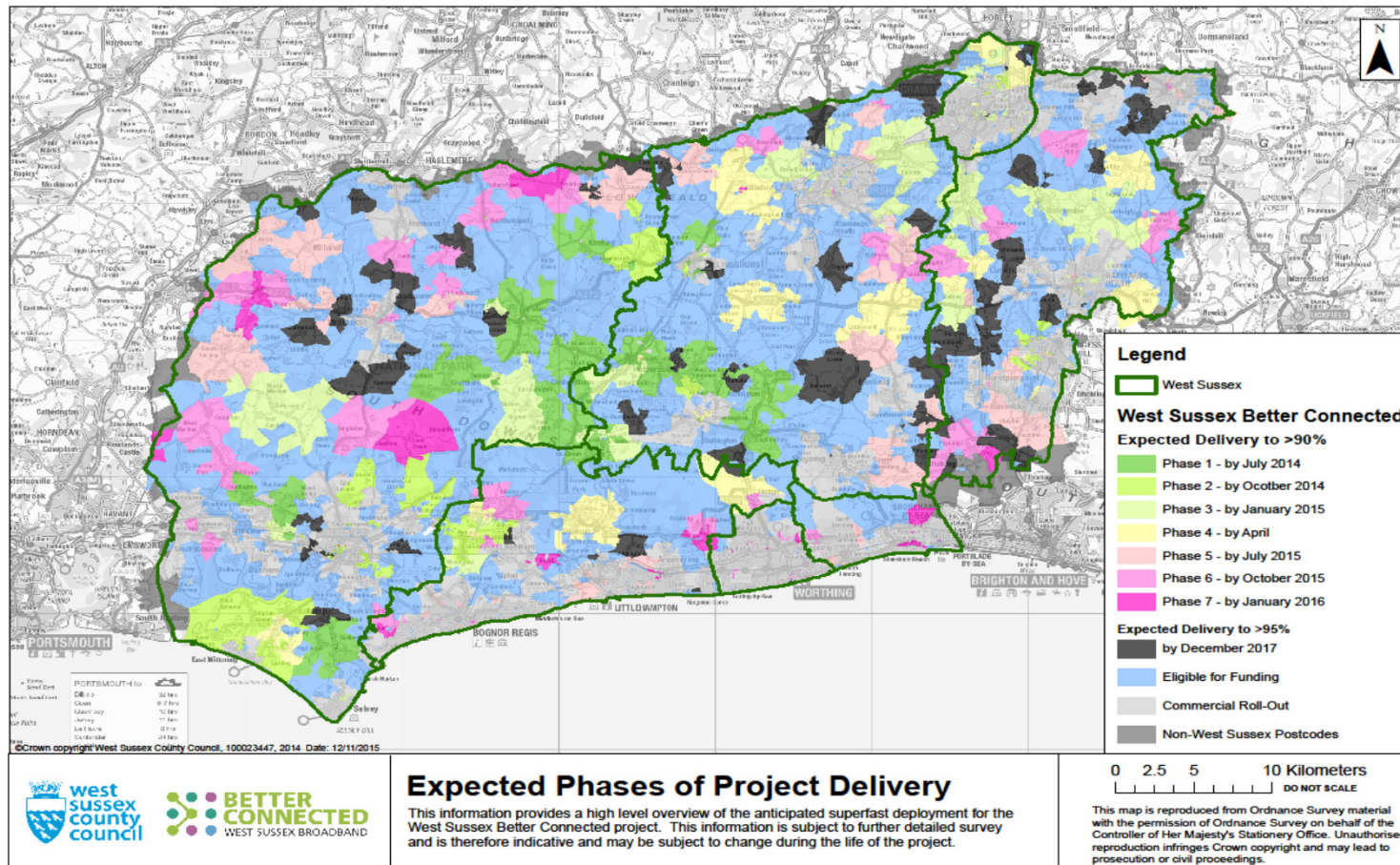
## Extending coverage of 'superfast' to 95%

- More than 3,000 extra homes and businesses in West Sussex will have access to 'superfast' fibre broadband by the end of 2017
- An additional £2.5million of investment by WSCC and central government will extend the current roll out of 'superfast' fibre broadband to reach 95%
- Increasingly expensive engineering is required to build the fibre network further in the county
- We have to balance achieving the most cost effective coverage against the need to reach a national target by the end of 2017
- Areas which are not included in the 95% coverage of 'superfast' broadband services across the county will continue to remain eligible for any future funding.



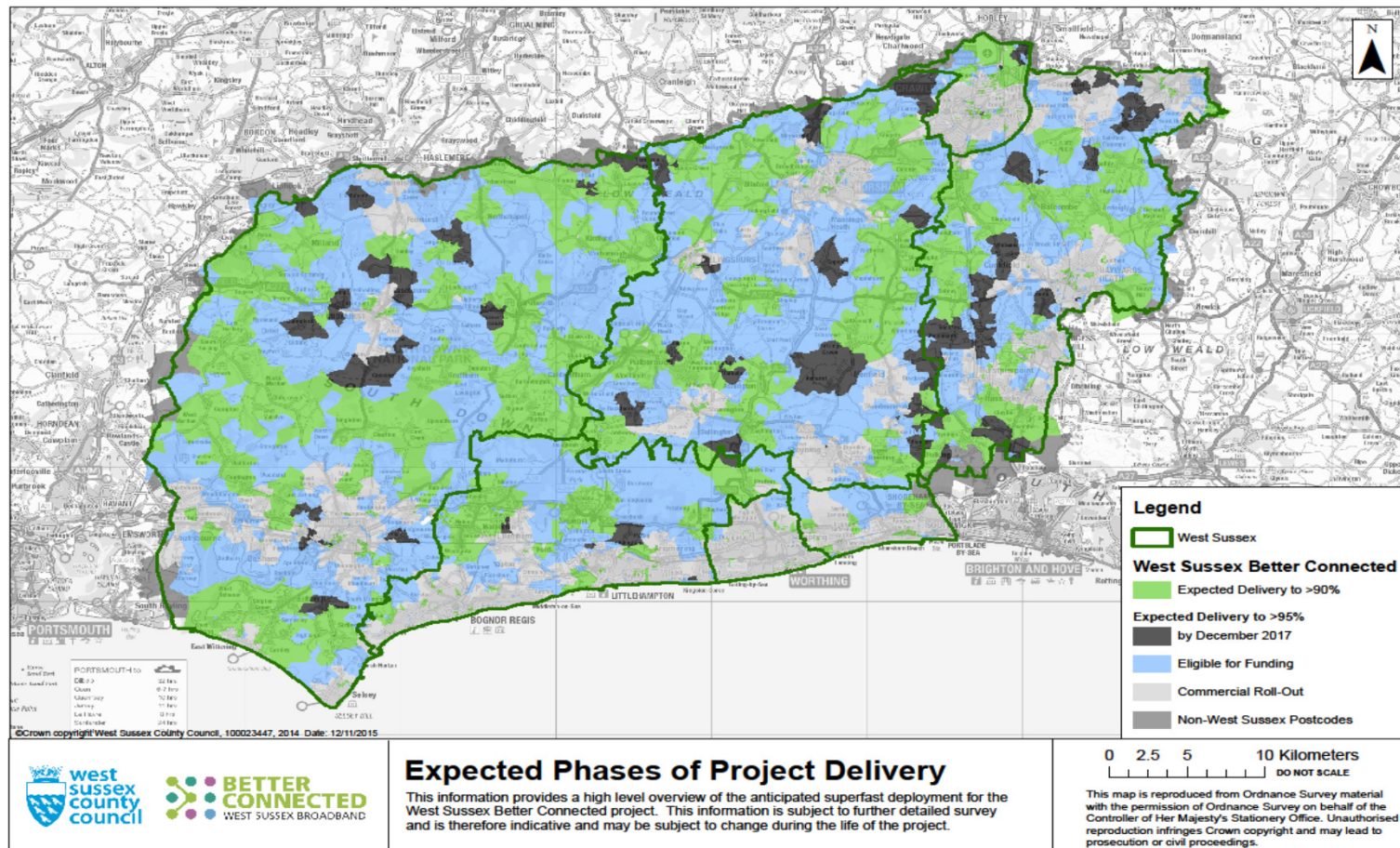


## Coverage map published on [westsussex-betterconnected.org.uk](http://westsussex-betterconnected.org.uk)





## Postcode areas covered and not covered by both contracts



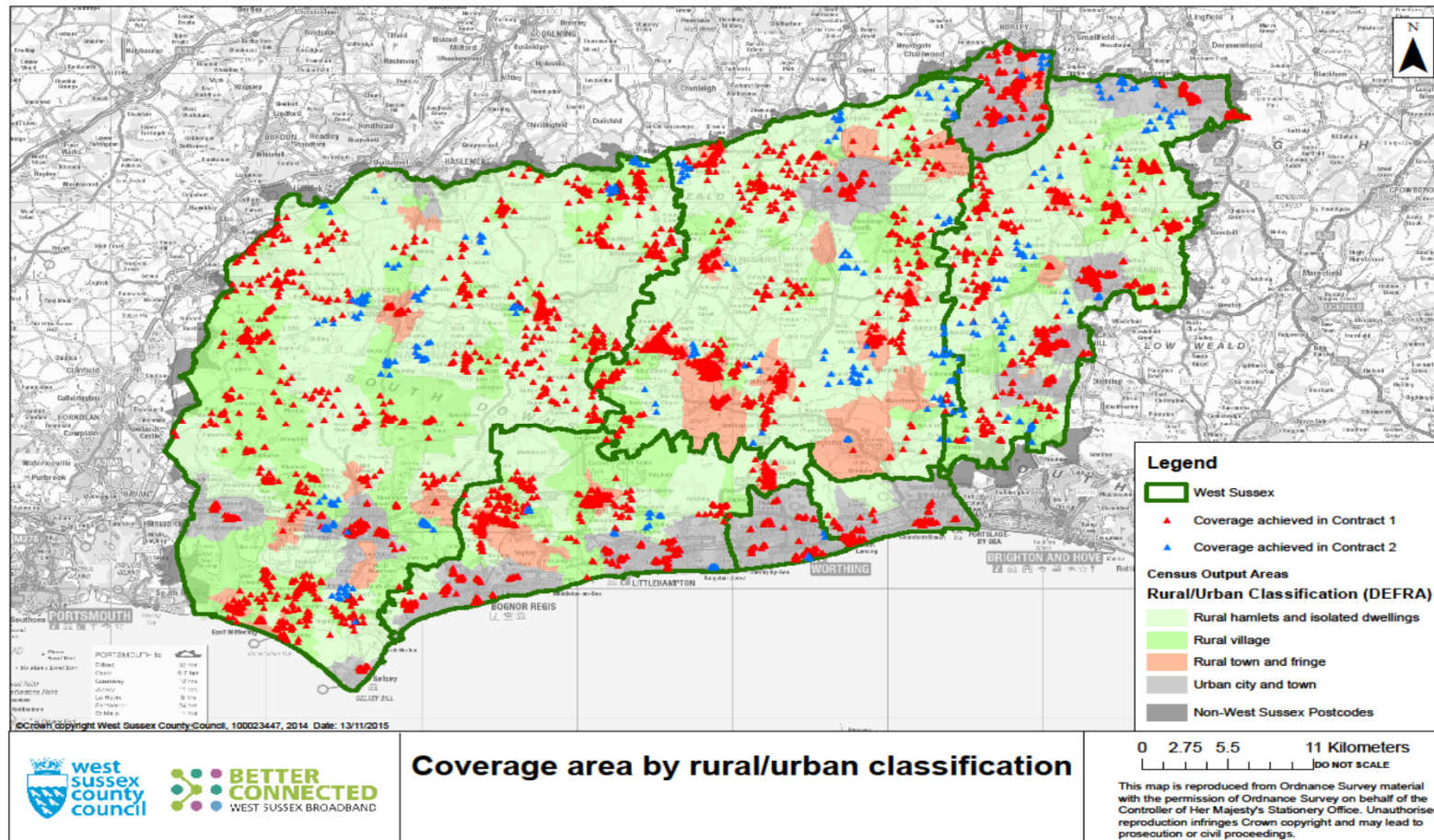
## Final % - what next?

- We are not aware of central government plans to fund or address this gap
- Solutions will require substantial investment and most likely, a mix of technologies
- We don't have the answers but will be gathering some information that will be important in planning the next steps for these areas.



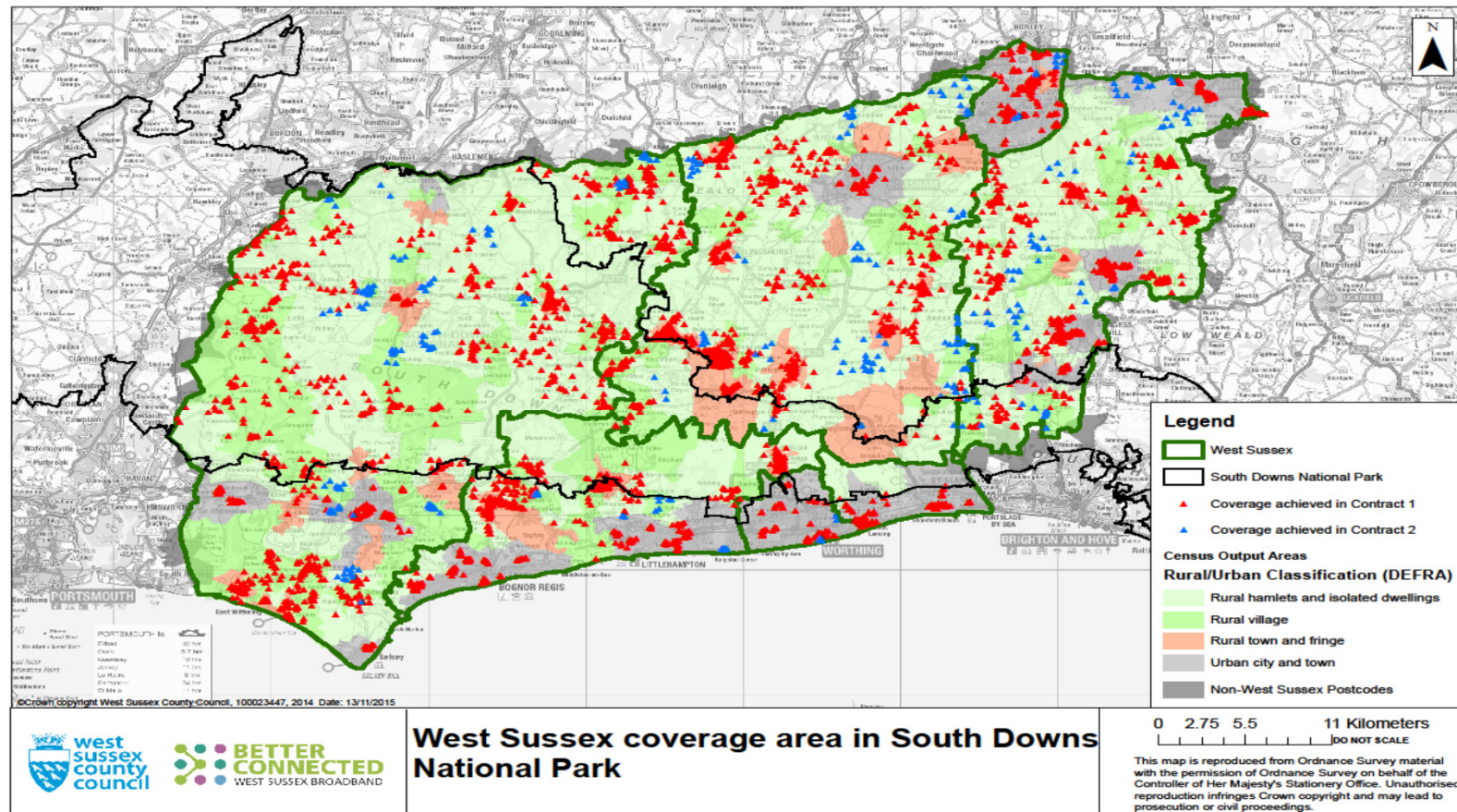


## Publicly funded roll out is being spread county-wide





# SDNP area



## For more information

Use the postcode checker and exchange map at:

[www.westsussex-betterconnected.org.uk](http://www.westsussex-betterconnected.org.uk)

Send enquiries to:

[Broadband@westsussex.gov.uk](mailto:Broadband@westsussex.gov.uk)

Openreach website for checking commercial roll-out:

[www.superfast-openreach.co.uk/where-and-when/](http://www.superfast-openreach.co.uk/where-and-when/)



[www.westsussex.gov.uk/broadband](http://www.westsussex.gov.uk/broadband)