
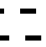


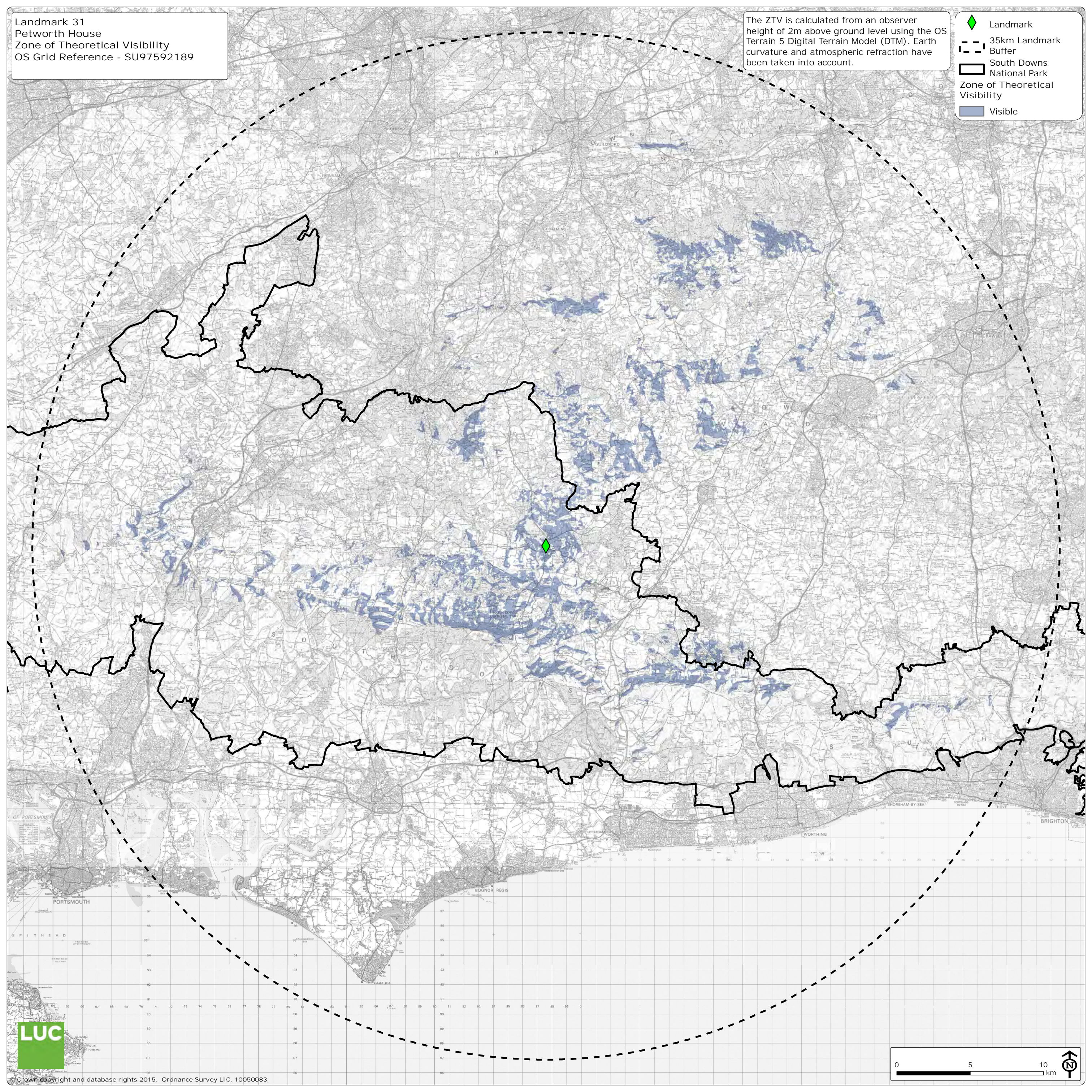


Landmark 31  
Petworth House  
Zone of Theoretical Visibility  
OS Grid Reference - SU97592189

The ZTV is calculated from an observer height of 2m above ground level using the OS Terrain 5 Digital Terrain Model (DTM). Earth curvature and atmospheric refraction have been taken into account.

-  Landmark
-  35km Landmark Buffer
-  South Downs National Park Zone of Theoretical Visibility
-  Visible



0 5 10 km

