



Hampshire Superfast Broadband Programme

Glenn Peacey

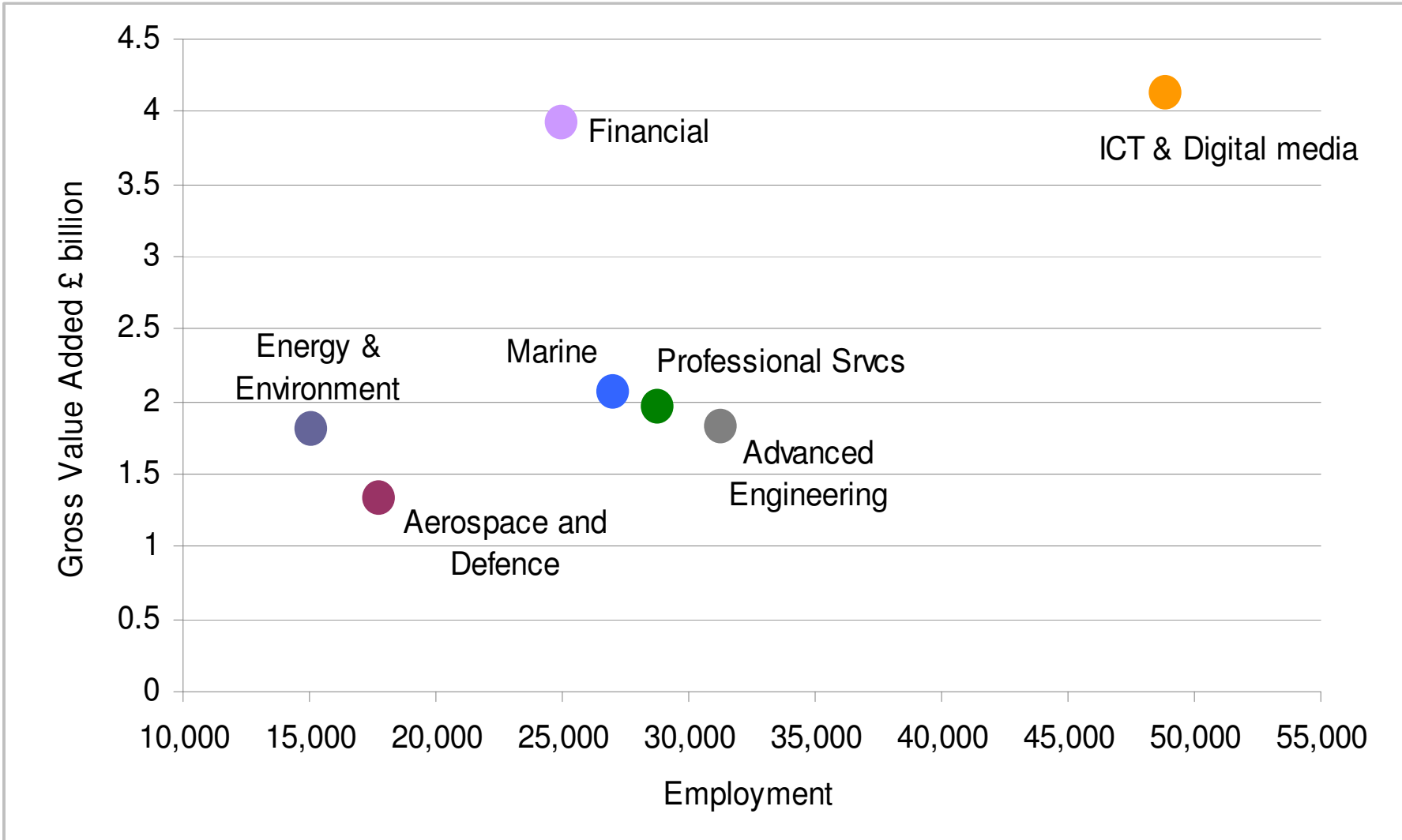
Programme Manager

Superfast Broadband

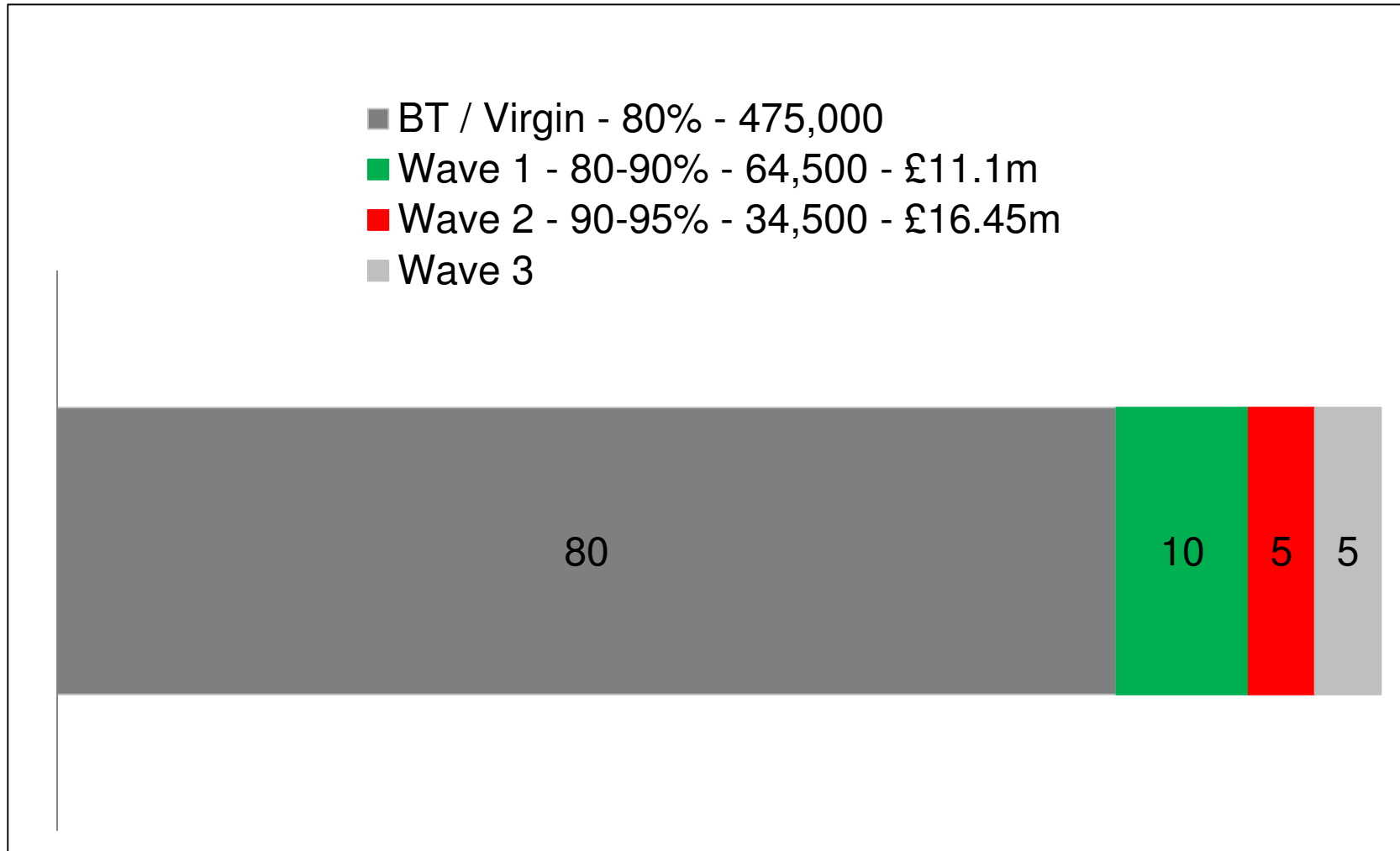
Hampshire's economy

- Home to 1.3m people (1.7m including Portsmouth and Southampton)
- c.595,000 premises
- Economic output is £37.8b per year (GVA)
Roughly 20% of the South East
- Broadband programme adds up to £679m to GVA*
- More than 60,000 businesses
 - Employing 780,000 people
- 120,000 commute to workplaces outside Hampshire
 - 25,000 who work in London
- 90,000 people commute into the area

*Based on World Bank research, which shows that a 1% increase in broadband coverage results in a 0.12% rise in GDP



Coverage in Hampshire



Hampshire Programme - 96.5% by Sept 2018

Wave 1 – BT

– 59,500 (10%)

42,000 premises >50Mbps

DCMS / RCBF – BT

3,500 additional premises (0.58%)

Innovation Fund – £1.2m – Call Flow

1,700 premises (0.28%)

Wave 2 – BT

34,500 premises (5.7%) by September 2018

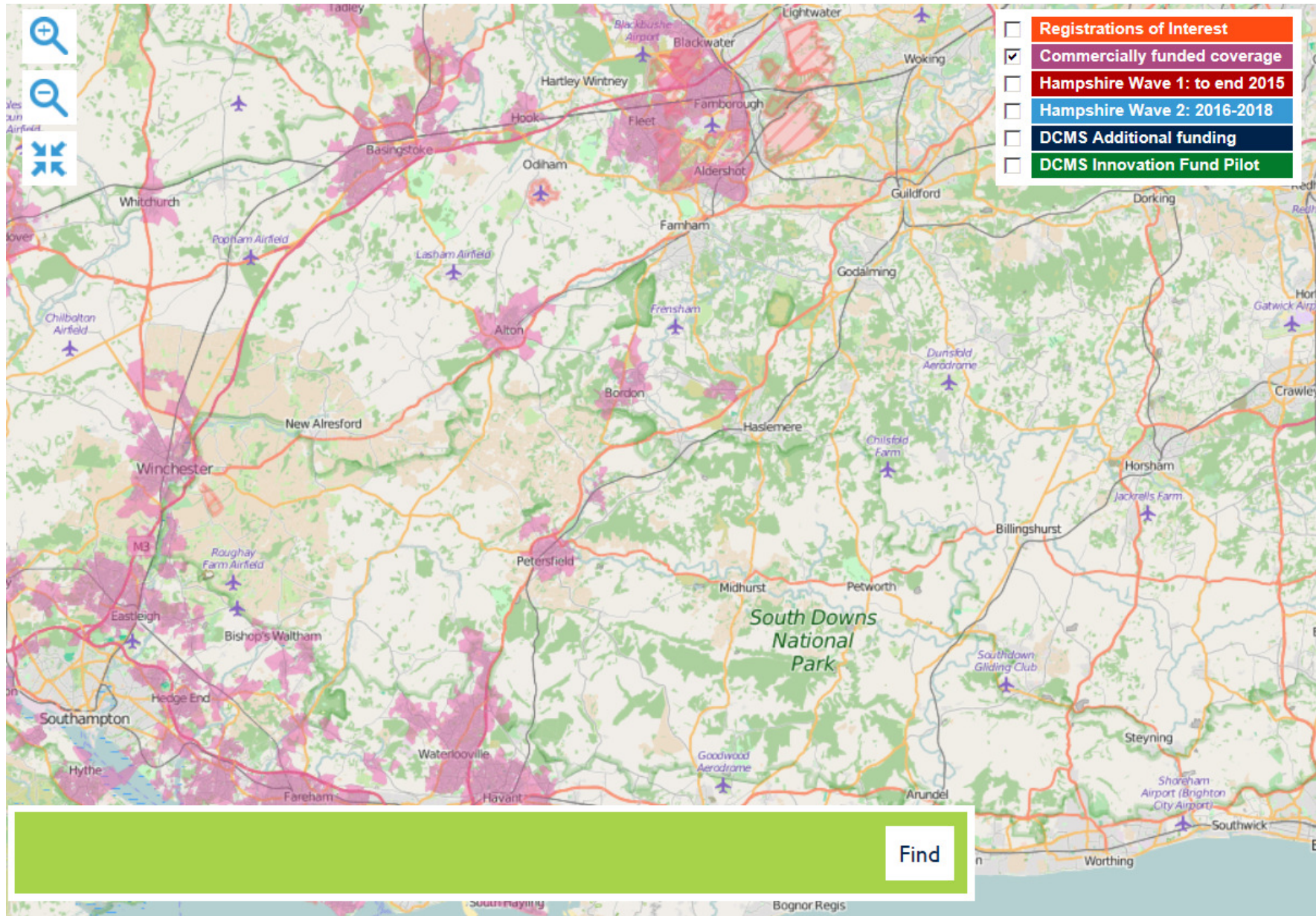
Universal Service Commitment

<2Mbps satellite installation subsidy



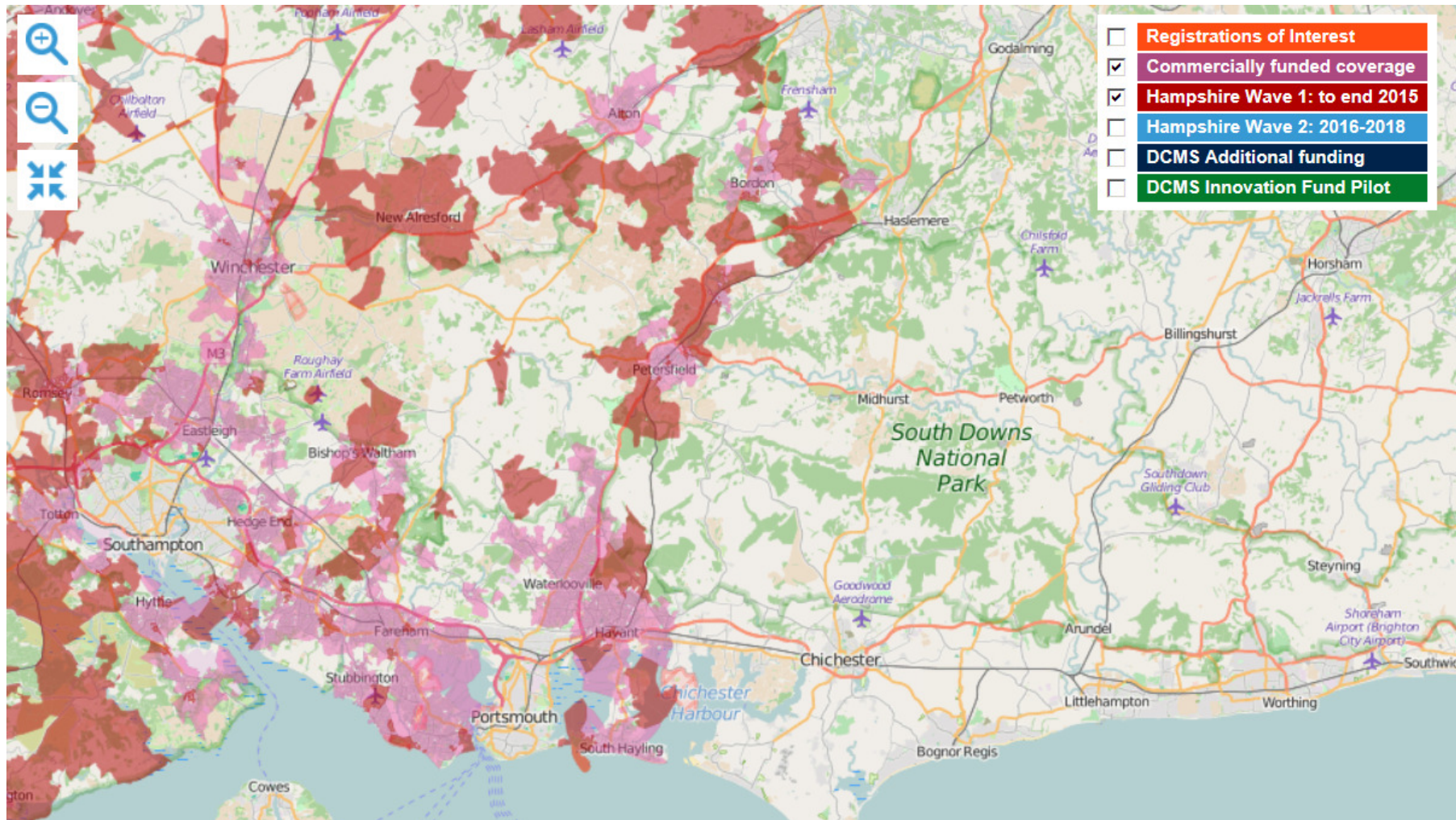
Funding Sources

	HCC	District Partners	DCMS	Total	Premises >24Mbps
Wave 1	£3.75m	£1.25m	£5m	£10m	59,500
RCBF	-	-	£1m	£1m	3,500
IF Trial	-	-	£1.2m	£1.2m	1,700
Wave 2	£9.2m	-	£9.2m	£18.4m	34,500
Grand Total	£12.95m	£1.25m	£16.4m	£30.6m	99,200
Gainshare (BT)				£1.7 - £2.5m	



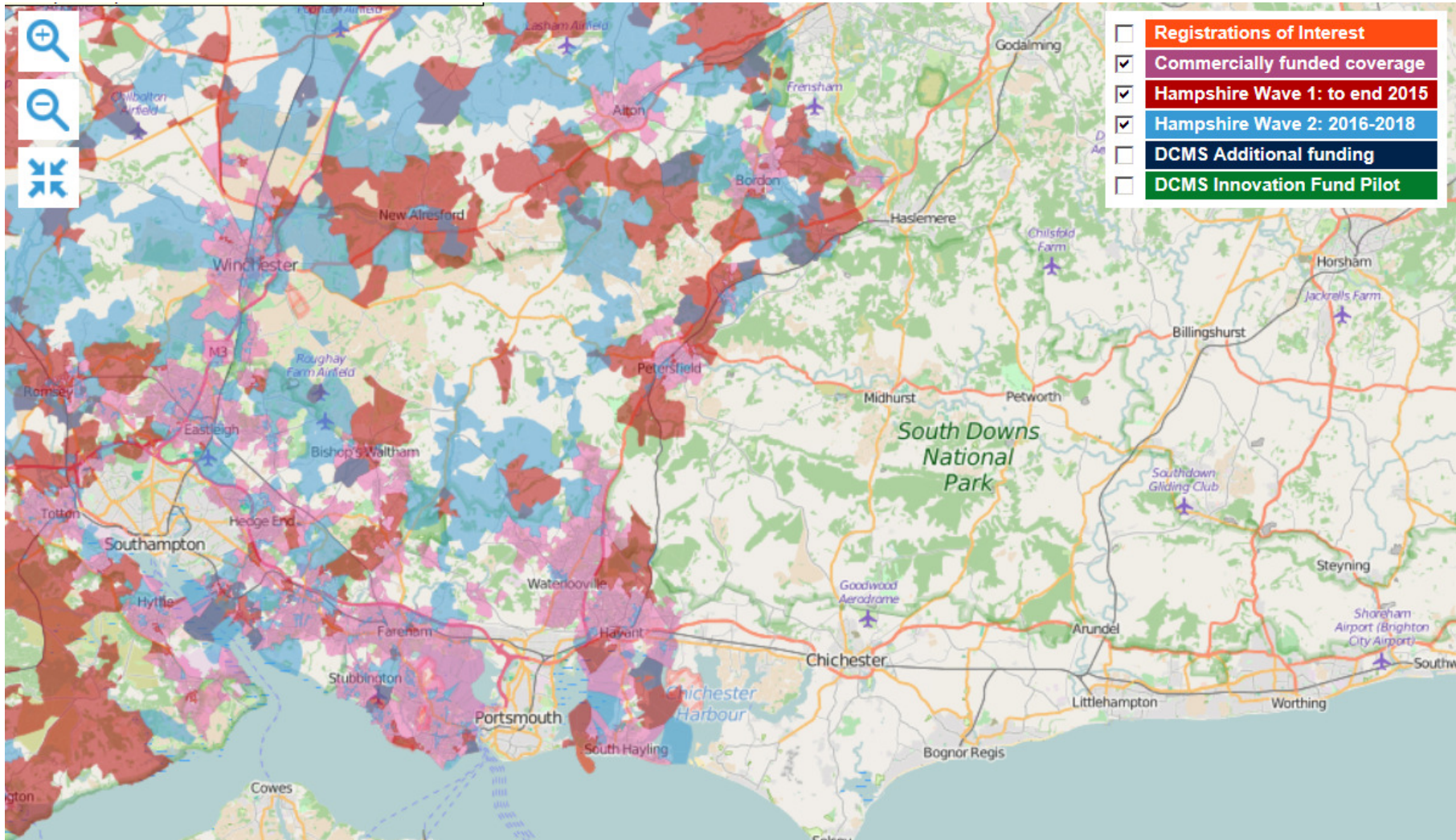
Hampshire
County Council

www.hants.gov.uk



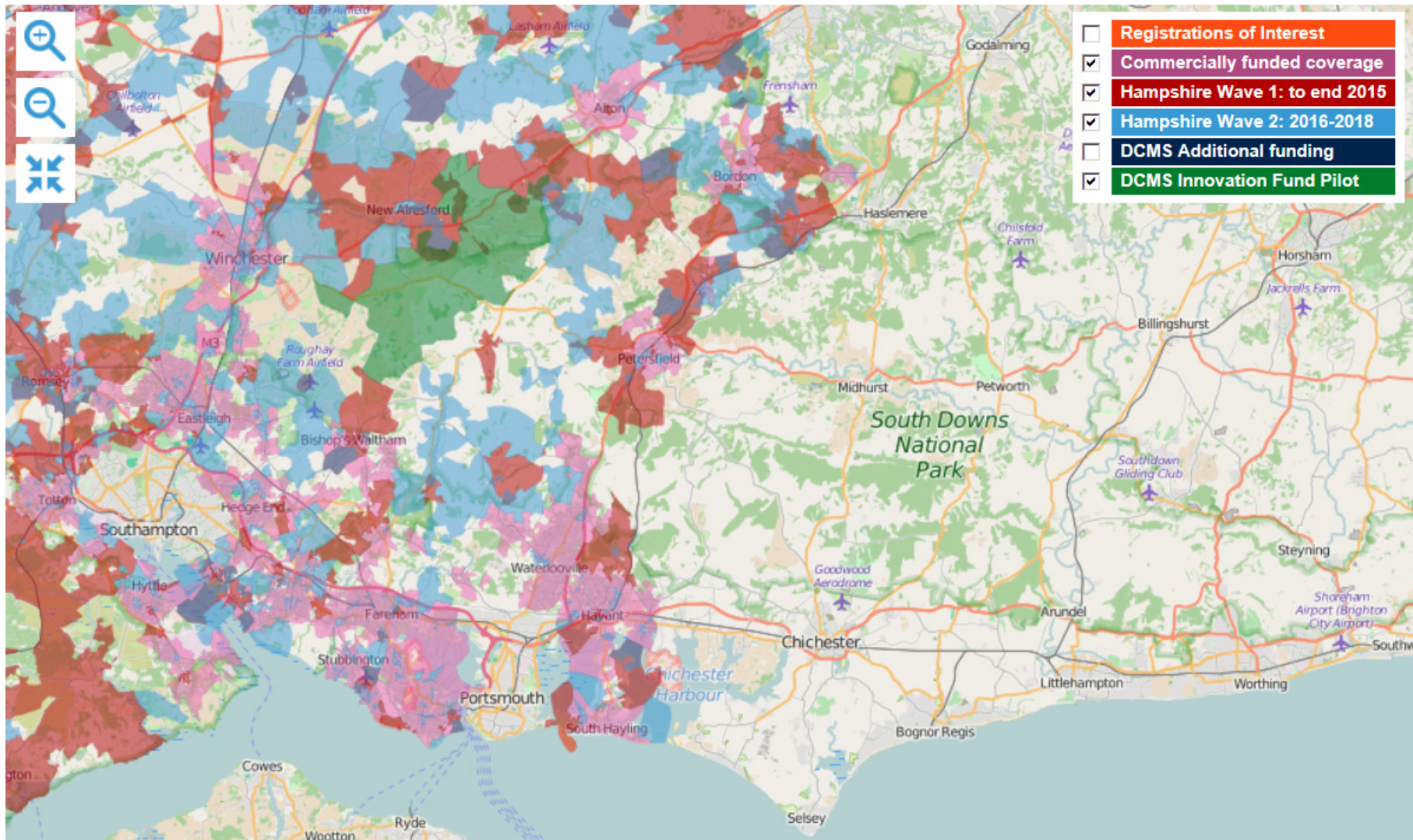
Hampshire
County Council

www.hants.gov.uk



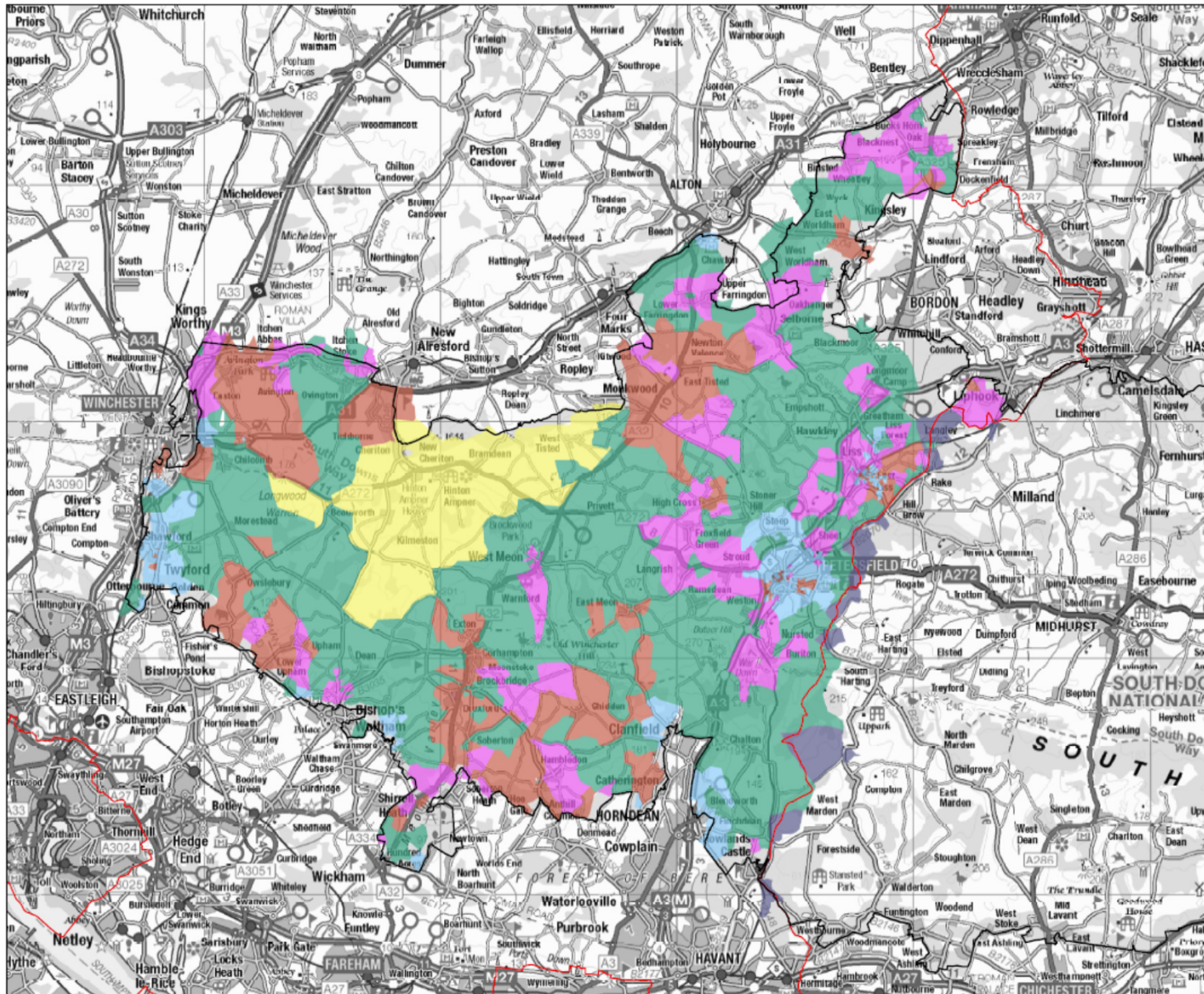
Hampshire
County Council

www.hants.gov.uk



Hampshire
County Council

www.hants.gov.uk



- Broadband Status**
- N/A
 - Wave 1
 - Wave 2
 - 100% commercially funded coverage
 - Innovation Fund
 - 100% commercially funded coverage
 - Some premises in last 4%
 - South Downs National Park
 - Hants

Scale @ A3 150,000
 © Crown copyright and database rights
 2015 Ordnance Survey 100050083

Hampshire Superfast
 Broadband Programme
 Status

How to find out more?

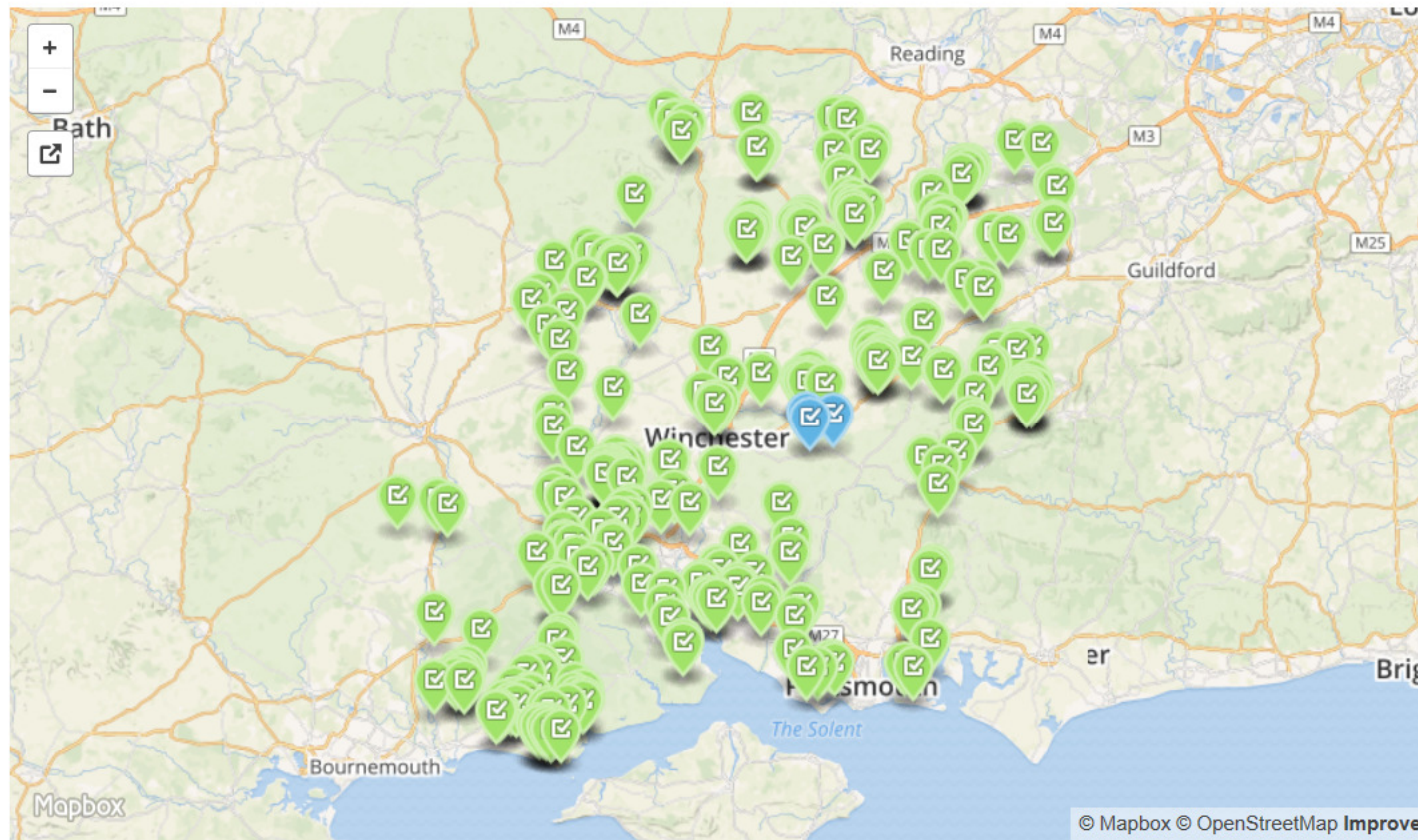
- Visit our website
- Register your interest
 - >26,000 have already done so
- Use the postcode checker
- Follow us on Twitter @superfasthants

Live Cabinets · Hampshire Superfast Broadband - Windows Internet Explorer

http://www.hampshiresuperfastbroadband.com/about-the-project/live-cabinets/

Hantsnet online poll | Hantsweb - Hampshire ... | BDUK Hampshire | Live Cabinets · Ham... | BB Cabinet Report ~ S... | BT Broadband

- On average premises with a line length of less than 1200 metres from the cabinet will be able to connect to Superfast Broadband
- Some premises might be served by a cabinet listed below, but they might be too far away to benefit from the upgraded service
- These premises will be considered for the next part of our programme extending coverage to at least 95% of Hampshire.



Cabinet Name	Covering Parts Of
Abbotts Ann 3	Abbotts Ann, Little Ann

Windows taskbar showing icons for Start, File Explorer, Mail, Internet Explorer, Scissors, Word, and PowerPoint.



PINECREST, WHITEMOOR LANE, WINSOR, SOUTHAMPTON, SO40 2HD: Wave 1 Upgrade - Your area is live

The cabinet which serves this postcode has been upgraded to deliver Superfast Broadband. Please use the links below to check the speed available to your property and [compare prices](#).

Please note: This does not guarantee that you will be able to access superfast broadband. In some cases, a few premises might be too far away from the new equipment to benefit.

[Price Comparison Website](#) [Superfast service checker](#)

Select your address from the list below:

PINECREST, WHITEMOOR LANE, WINSOR, SOUTHAMPTON, SO40 2HD

SO40 2HD [Find](#)

Leaflet | Map data © OpenStreetMap contributors



The last 4%?

- New technologies?... Innovation Fund trials
- New funding? LEPs?
- Drive take up = gainshare

Alternative funding models?

- Match funding?

Community self-funded solutions

- Rotherwick - £24,000
- Stratfield Saye - £80,000

Alternative providers – e.g. CallFlow

New housing developments?

Useful Links

Register with us: www.hants.gov.uk/broadband

BT Line checker: www.dslchecker.bt.com

Twitter: [@superfasthants](https://twitter.com/superfasthants)

Email: broadband@hants.gov.uk