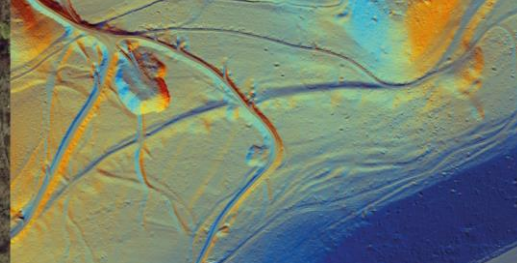




SECRETS OF THE HIGH WOODS

HERITAGE | LANDSCAPE | SCIENCE



Bibliography

Airborne Laser Scanning/Remote sensing:

Bennett, R., Welham, K., Hill, R.A., and Ford, A. 2011. Making the most of airborne remote sensing techniques for archaeological survey and interpretation. In D. C. Cowley (ed) *Remote Sensing for Archaeological Heritage Management*. EAC Occasional Paper 5, 99-107. Hungary: Archaeolingua
Available at: <http://www.pushingthesensors.com/publications/>

Historic England, 2010. *The Light Fantastic – Using airborne lidar in archaeological survey*. Available at: <https://www.historicengland.org.uk/images-books/publications/light-fantastic/>

Opitz, R. and Cowley, D. 2013. *Interpreting archaeological topography: 3D Data, Visualisation and Observation*. Oxbow

Wilson, D.R., 2000. *Air Photo Interpretation for Archaeologists*. Tempus

Landscape Analysis:

Rackham, O. 1994. *The Illustrated History of the Countryside*. Weidenfeld and Nicolson

Rackham, O. 1976. *Trees and Woodland in the British Landscape*. Dent & Sons

Rippon, S., 2012. *Historic Landscape Analysis; Deciphering the Countryside*. Council for British Archaeology, York

General archaeology and history (of relevance to SHW project area):

Angell, S., (1996) 'The Secret Sussex Resistance' Middleton Press

Brandon, P. (1999) *The South Downs*. Phillimore & Co. Ltd

Brandon, P. and Short, B. (1990) *The South-East from AD 1000*. Longman

Butler, C. (2008) *West Sussex Under Attack, Anti-Invasion Sites 1500 -1990* Tempus

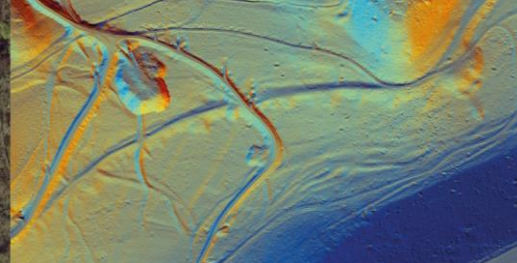
Cunliffe, B. (2005) *Iron Age Communities in Britain, (4th ed)*. Routledge: London

Drewett, P., Rudling, D. and Gardiner, M. (1988) *The South- East to AD 1000*. Longman



SECRETS OF THE HIGH WOODS

HERITAGE | LANDSCAPE | SCIENCE



Leslie, K. and Short, B. (1999) *Historical Atlas of Sussex*. Phillimore

Manley, J. (2008) 'The Archaeology of Fishbourne and Chichester, A framework for its future', Sussex Archaeological Society <http://sussexpast.co.uk/research/fishbourne-conservation-framework>

Rudling, D. (2008) *Ritual Landscapes of South-East Britain*, Oxbow

Rudling, D. (2003) *The Archaeology of Sussex to AD2000*. Heritage Marketing and Publications Ltd.

Stoodley, N. (ed) 2002, *The Millennium Publication: A review of Archaeology in Hampshire 1980–2000*

Useful websites:

West Sussex Record Office: <http://www.westsussex.gov.uk/ro>

Hampshire Record Office: <http://www3.hants.gov.uk/archives>

The National Archives: <http://www.nationalarchives.gov.uk/>

British History Online: <http://www.british-history.ac.uk/>

Britain from Above: <http://www.britainfromabove.org.uk/>

Heritage Gateway: <http://www.heritagegateway.org.uk/gateway/>

Old Sussex Mapped: <http://envf.port.ac.uk/geo/research/historical/webmap/sussexmap/sussex.html>