

P&P Committee Meeting

21 July 2015

Agenda Item 15

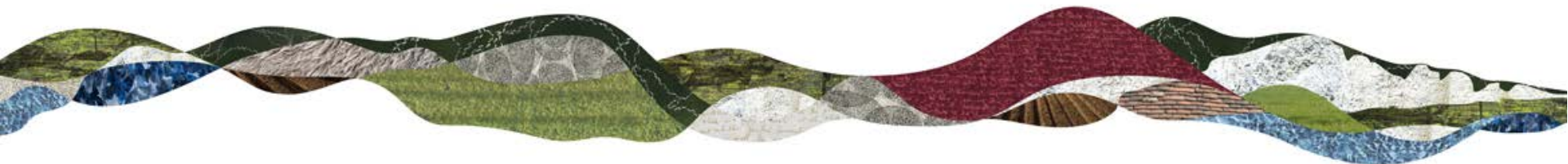
Working with LEADER and LEPs

Angie Blowman
Sustainable Futures Manager



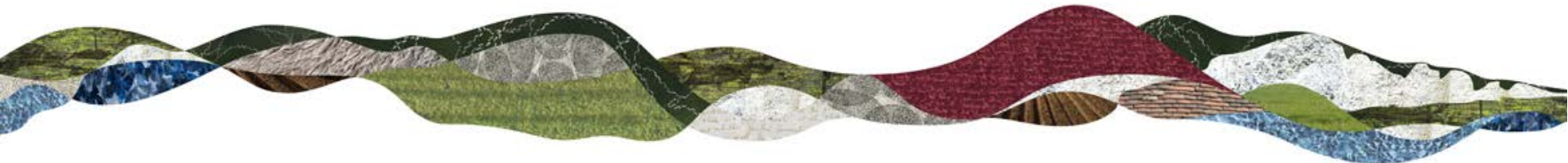
Outline

- LEADER (three programmes)
 - funding
 - priorities and opportunities
 - focus for SDNPA
- LEPs (three LEPs)
 - priorities
 - funding opportunities
 - focus for SDNPA



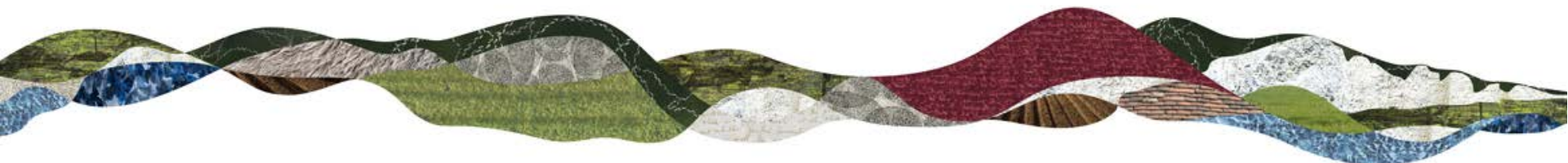
LEADER – context

- Part of Rural Development Programme for England (RDPE) – focus on economic growth, creating and safeguarding jobs, added value
- Potentially 80 LEADER areas funded for 2015-2020 but none of these have a contract letter as yet
- 6 LEADER priorities – good fit with Partnership Management Plan:
 - support micro and small businesses and farm diversification
 - boost rural tourism
 - increase farm productivity
 - increase forestry productivity
 - provide rural services
 - provide cultural and heritage activities
- Local priorities set by Local Action Groups in their Local Development Strategies

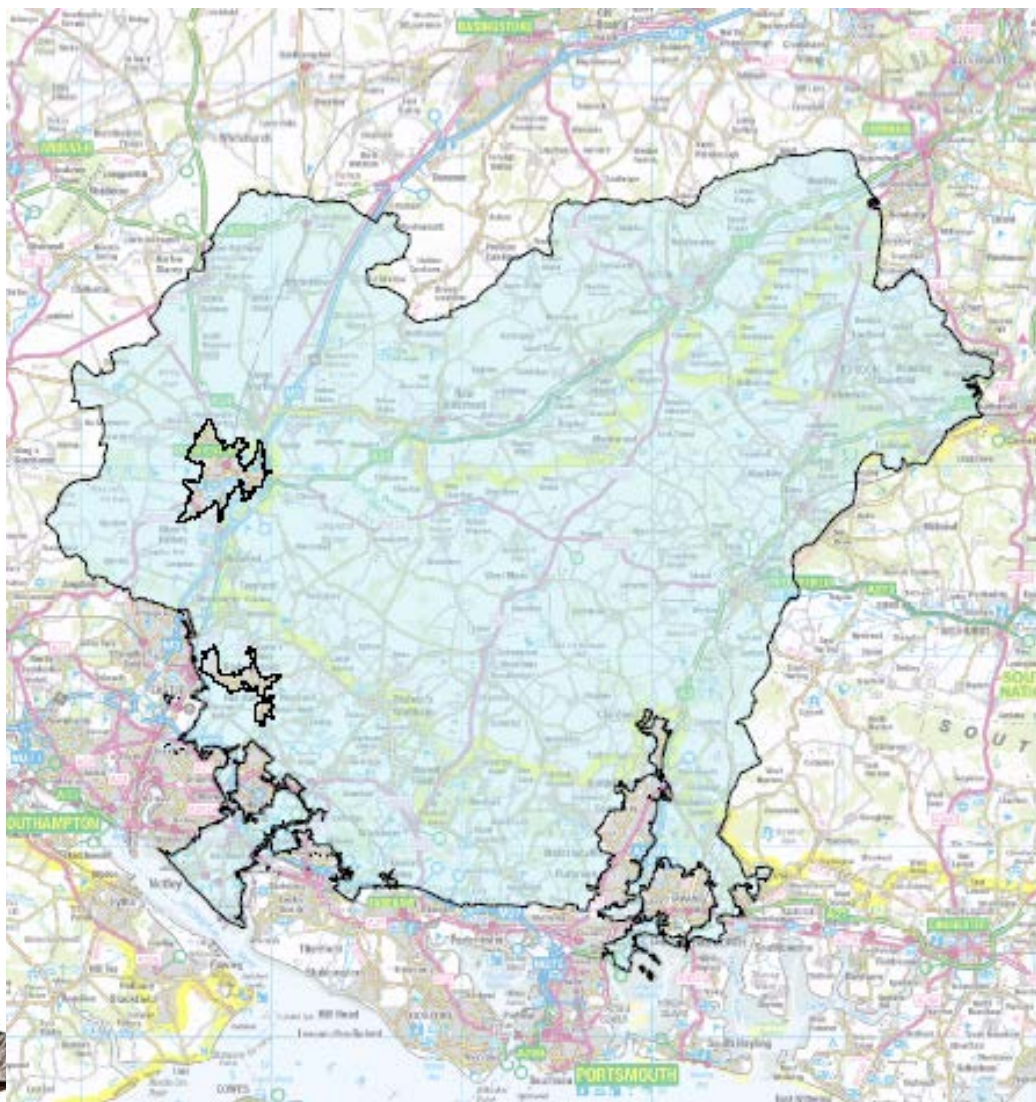


LEADER and SDNP – funding

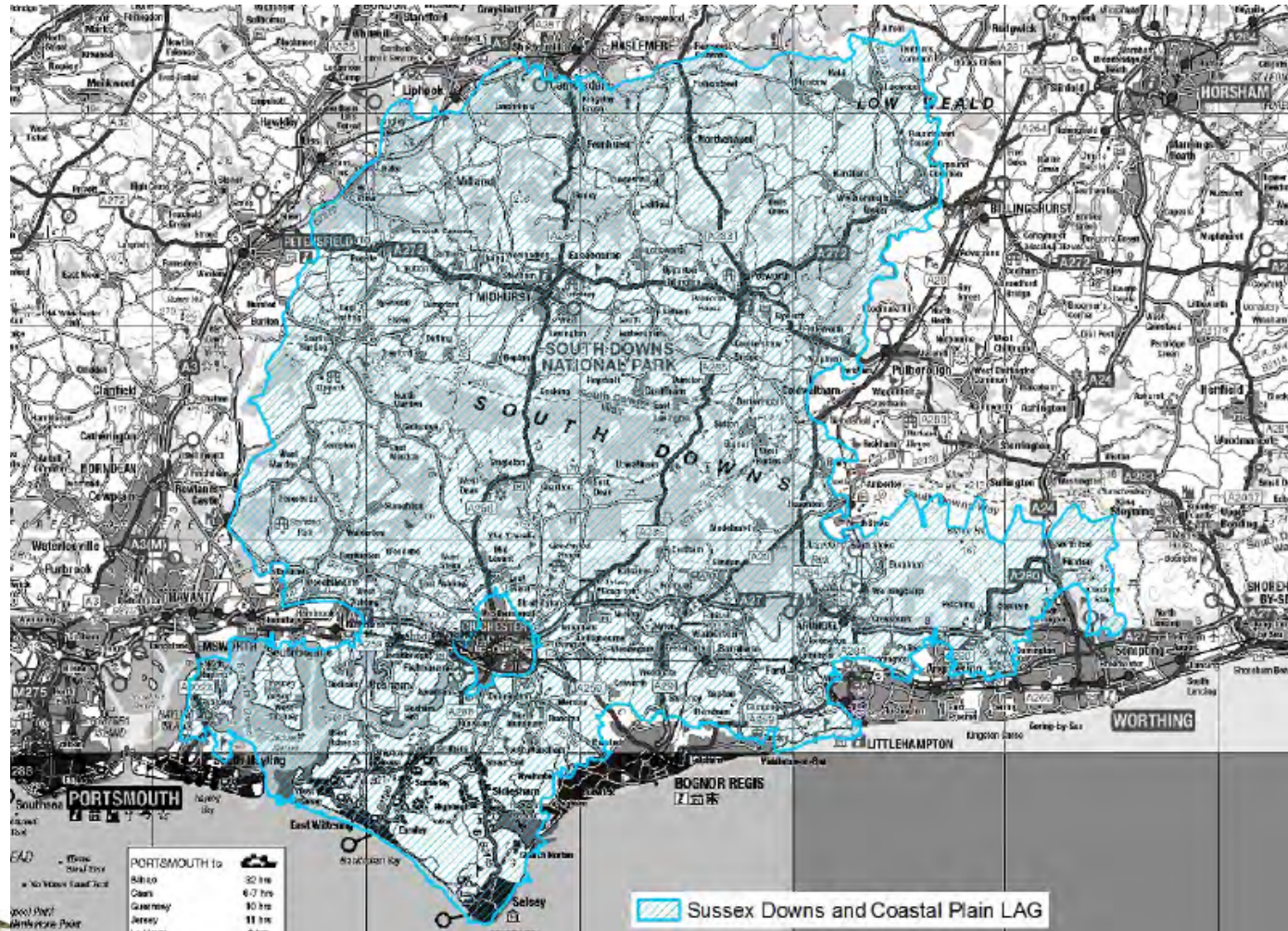
Local Action Group (LAG)	Area	LEADER Funding
Fieldfare (F)	Rural East Hants around Winchester, north of Portsmouth & Havant; includes Petersfield	£1.6m
Sussex Downs & Coastal Plain (SDCP)	Rural parts of Chichester & Arun Districts, rural parts of Hayling Island	£1.492m
Central Sussex (CS)	Rural parts of Horsham, Lewes and Mid-Sussex Districts and Lewes	£1.705m
Total funding		£4.797m



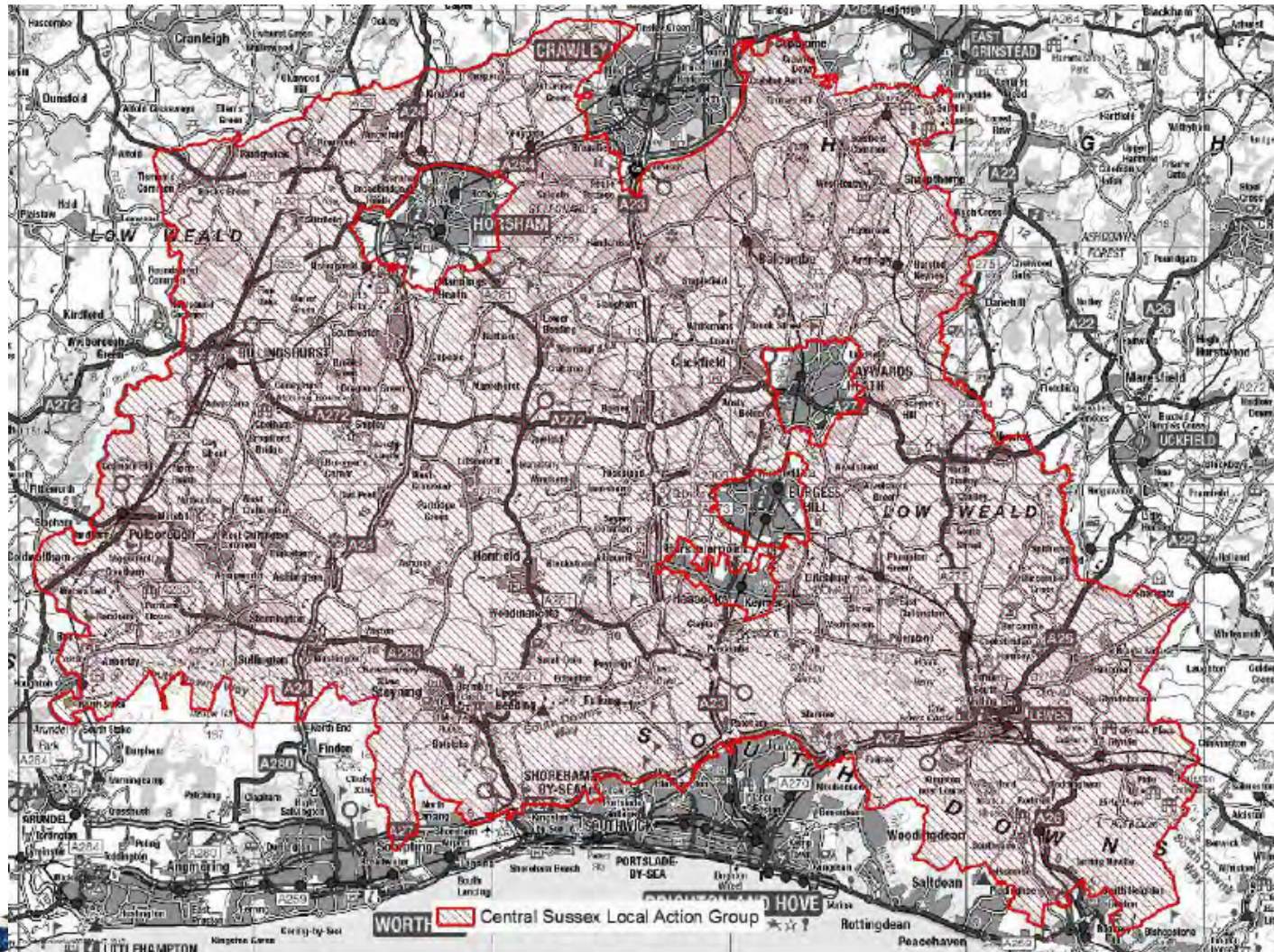
Fieldfare LEADER LAG area



Sussex Downs & Coastal Plain LEADER LAG Area



Central Sussex LEADER LAG Area



LEADER & SDNP: priorities & opportunities

LAG	Local Priorities in Local Development Strategies	Fit with PMP
F	Tourism, forestry production, business and farm diversification, increased farm production, cultural and heritage activity & support for rural services	√ <i>Sustainable</i> tourism & farming
SDCP	Micro and small enterprises that thrive and grow ... Resilient land-based sector (uses natural capital) ... Robust year round visitor economy ... Innovative service infrastructure ... supports rural communities	√
CS	Vibrant economy with quality jobs – small & micro ... Robust land-based sector ... farming , woodlands Great place to live, work and visit ... sustainable visitor economy ... strengthen food and drink	√



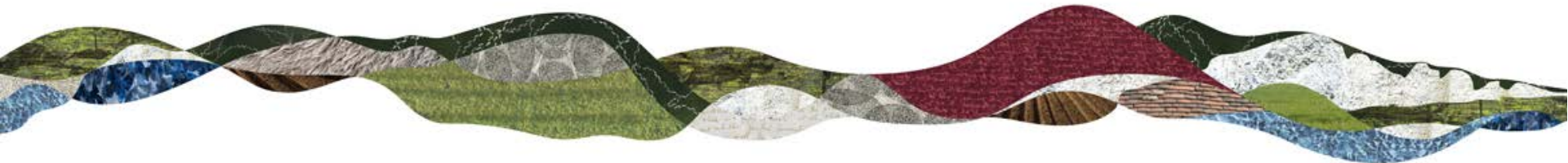
LEADER and SDNPA focus – for discussion

Suggested area of focus	Current/new	Who
Strategic overview of 2015/20 programmes	Current	Sustainable Economy Officer & Member rep. on LAGs
Appraisal of new projects	Current*	Sustainable Economy Officer
Increasing our understanding of LEADER funding opportunities (small grants) & how to signpost applicants	New	Sustainable Economy Officer and External Funding team
Update website to include LEADER information and contacts for applicants	New	Sustainable Economy Officer and External Funding team
Other??		



Local Enterprise Partnerships – context

- Set up in 2010 to replace Regional Development Agencies
- Create economic growth in local economic areas focusing on local economic priorities
- 39 LEPs awarded high levels of funding (Local Growth Fund and EU funding)
- Partnerships of private and public sector usually business-led
- Local priorities in LEPs' Strategic Economic Plans (SEPs) and European Structural and Investment Fund (ESIF) Strategies
- *Some* synergy with PMP priorities – LEPs' rural statements



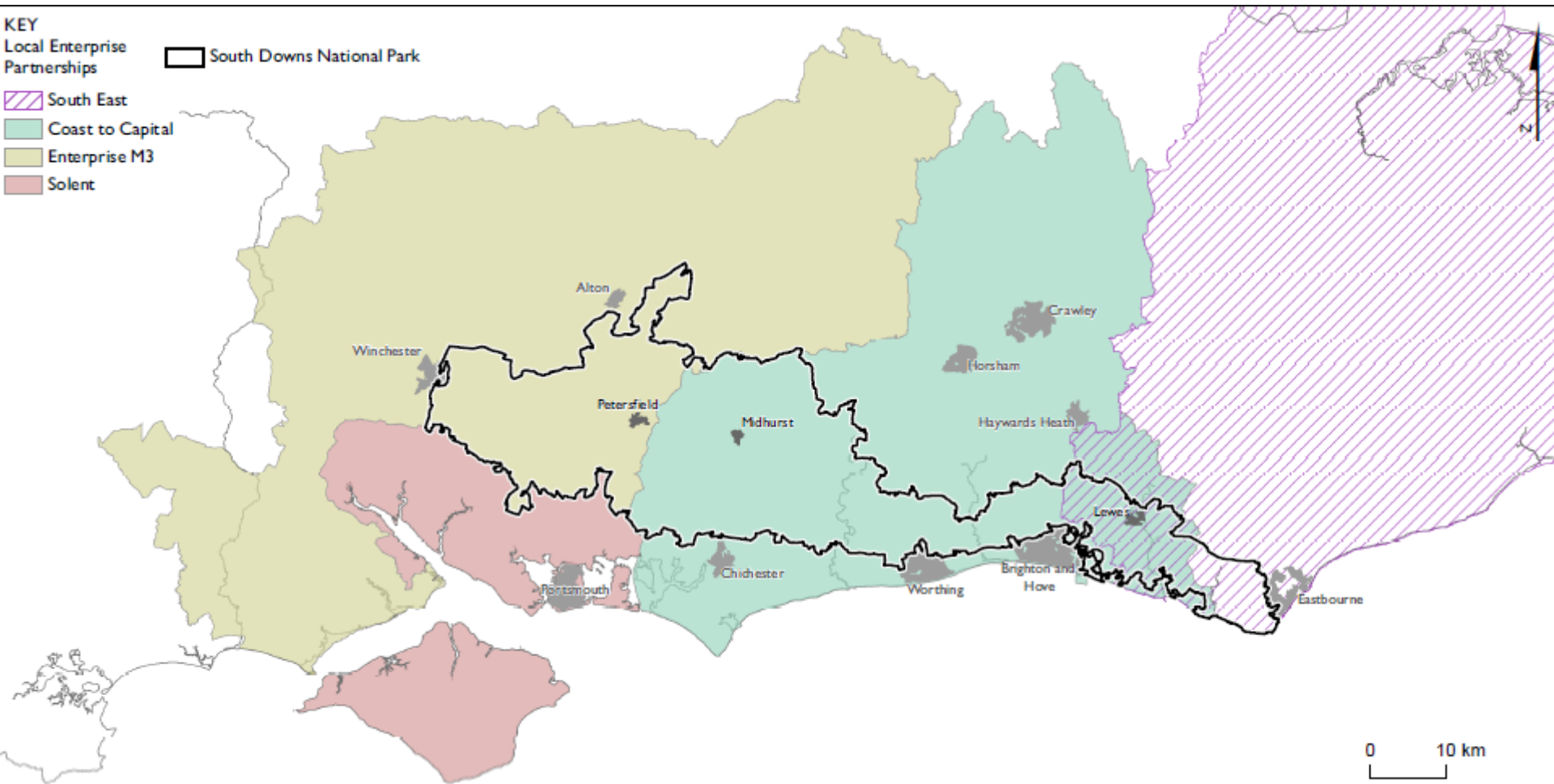
Local Enterprise Partnership areas



LEPs and SDNP

KEY
Local Enterprise Partnerships
South Downs National Park

South East
Coast to Capital
Enterprise M3
Solent



LEPs and SDNP – funding

Local Enterprise Partnership (LEP)	Area - all include part of SDNP	Local Growth Fund	ESIF
Enterprise M3 (EM3)	Parts of Hampshire & Surrey includes most of New Forest NPA	£118.1m	£43m
Coast to Capital (C2C)	West Sussex, Lewes, Brighton & Hove, part Surrey, Croydon	£202.4m	£61.2m
South East (SELEP)	East Sussex, Essex, Kent etc., overlap with C2C (around Lewes)	£488.3	£165m
Total funding		£808.8	£269.2



LEPs & SDNP: priorities & opportunities

LEP	A. Local Growth Fund priorities in SEPs	Fit with PMP/opportunities
EM3	Growth towns and step-up towns (outside SDNP) M3 Sci-Tech corridor Rural economy Strategic road/rail improvements	X X √ X- Indirectly
C2C	Business support and loans Advanced engineering centre Local transport, flood defences Improvements to Local Colleges estates Wood fuel (renewable energy, building materials)	√ X √ - transport X √
SELEP	Building on economic strengths Boosting productivity and skills Building more houses ... Investing in growth corridors	X X Local Plan link X



LEPs & SDNP: priorities & opportunities

LEP	B. ESIF funding priorities NB. EAFRD – targets rural	Fit with PMP/opportunities
EM3	ERDF: research, SMEs competitiveness, low carbon ESF: labour mobility, skills, social inclusion & poverty EAFRD – broadband, agric. diversification, rural tourism, food & drink businesses, SMEs	√ - low carbon X √ √
C2C	ERDF: research; business competitiveness; low carbon ESF: skills; access to employment; social inclusion EAFRD: rural businesses, visitor economy	√ low carbon X √
SELEP	ERDF: innovation, SMEs competitiveness, low carbon ESF: social inclusion, employment (young people), education & skills EAFRD: training for business, business support, renewables, broadband	√ low carbon X √ renewables, broadband



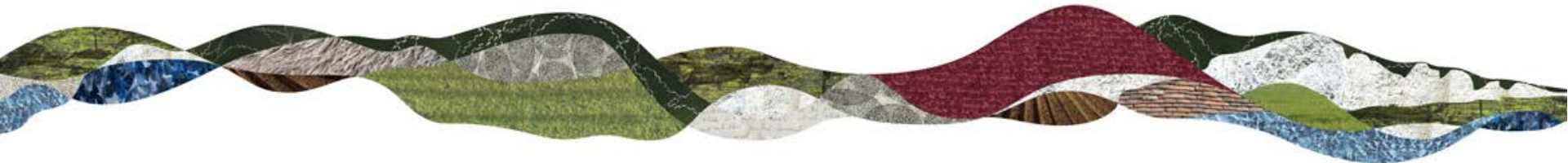
LEPs and SDNPA focus – for discussion

Suggested area of focus	Current/new	Who
Broadband – LGF & EAFRD – current project, future bids	Current and new	Sustainable Economy Officer, Sustainable Futures Manager & External Funding Team
Tourism – EAFRD – future bid(s)	New	Sustainable Tourism Officer & External Funding Team
SMEs especially farm diversification (link to Food Enterprise Zone) – EAFRD – future bid(s)	New	Sustainable Economy Officer & External Funding team
Wood fuel & renewables – LGF & EAFRD – future bid(s)	New	Sustainable Economy Officer, Woodland Officer & External Funding team
Other??		



Next steps

- Bring together agreed priorities for both LEADER and LEPs engagement and targeting specific funding
- Plan of action on funding opportunities
- Track funding applications & successes
- Follow up report to Members



Contacts

Angie Blowman, Sustainable Futures Manager, SDNPA

T: 01730 819260

M: 07872 410451

angie.blowman@southdowns.gov.uk

David Doxford, Sustainable Economy Officer, SDNPA

T: 01730 819267

M: 07701 294448

david.doxford@southdowns.gov.uk

