

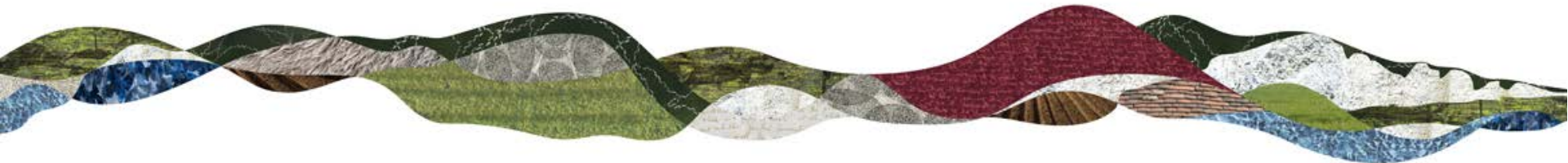
Broadband Update

Angie Blowman, Sustainable Futures Manager
National Park Authority 16 July 2015



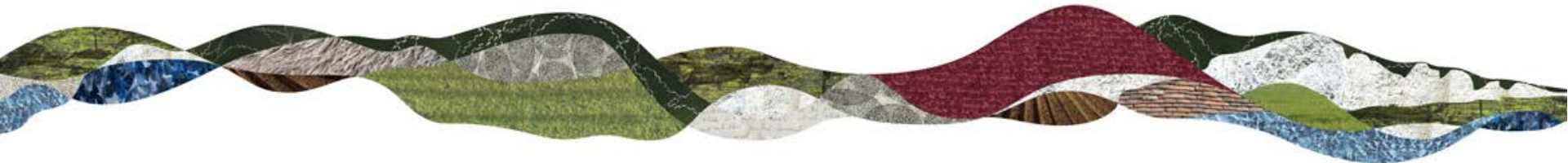
Aims

- ▶ Corporate Plan: influence increasing superfast broadband coverage in the National Park
- ▶ Partnership Management Plan: increase broadband availability and speed to benefit businesses, homeworkers and residents
- ▶ PMP Delivery Framework: in partnership with Broadband Delivery UK (BDUK - led by BT Openreach and County Councils) and LEPs (pilot projects)



Superfast Broadband Targets

- ▶ National targets for BDUK programme of 90% coverage by 2015 and 95% by 2017 - premises with access to superfast broadband (24Mbps)
- ▶ 90% = Wave 1
- ▶ 95% = Wave 2, Superfast Extension Programme
- ▶ Poorer coverage in rural areas



Progress on BDUK programme

- ▶ Hampshire: Wave 1 completes Dec. 2015 (59,500 premises); Wave 2 to complete by mid-2019 (34,500 premises)

<http://www.hampshiresuperfastbroadband.com/>

- ▶ West Sussex: Wave 1 to complete Spring 2016 (58,863 premises); Wave 2 to complete end of 2017 (nos. not yet available)

<http://www.westsussex-betterconnected.org.uk>

- ▶ East Sussex: Wave 1 (96%) to complete March – June 2016 (66,578 premises)

<http://esussex.org/>

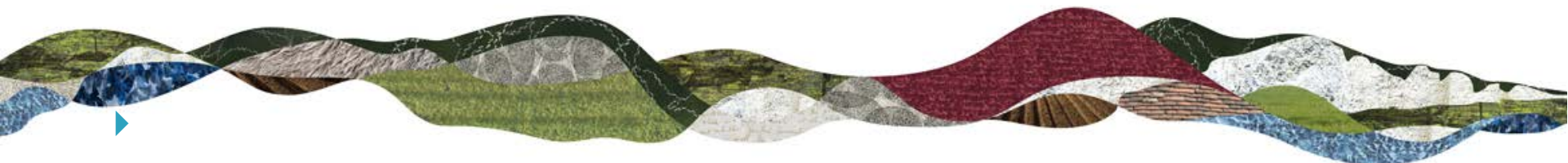


SDNPA Broadband Project, 2014

Broadband Vantage commissioned to:

- ▶ Analyse superfast broadband coverage across SDNP through the roll out of national BDUK programme:
 - Achieving national targets?
 - Funding arrangements

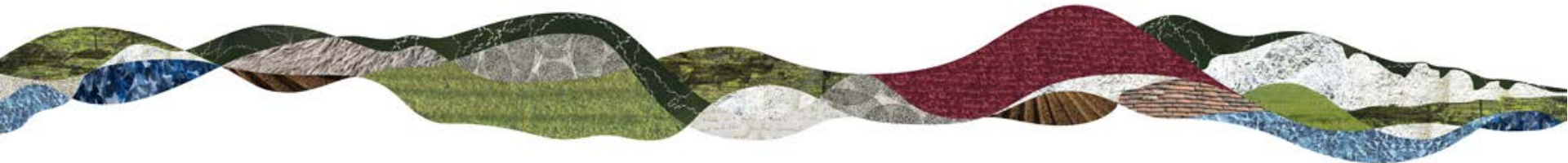
- ▶ Identify funding opportunities to extend coverage:
 - Working with County Councils on opportunities and bids
 - Consider partnerships with landowners/others in rural areas



SDNPA Broadband Project, 2014

Key messages:

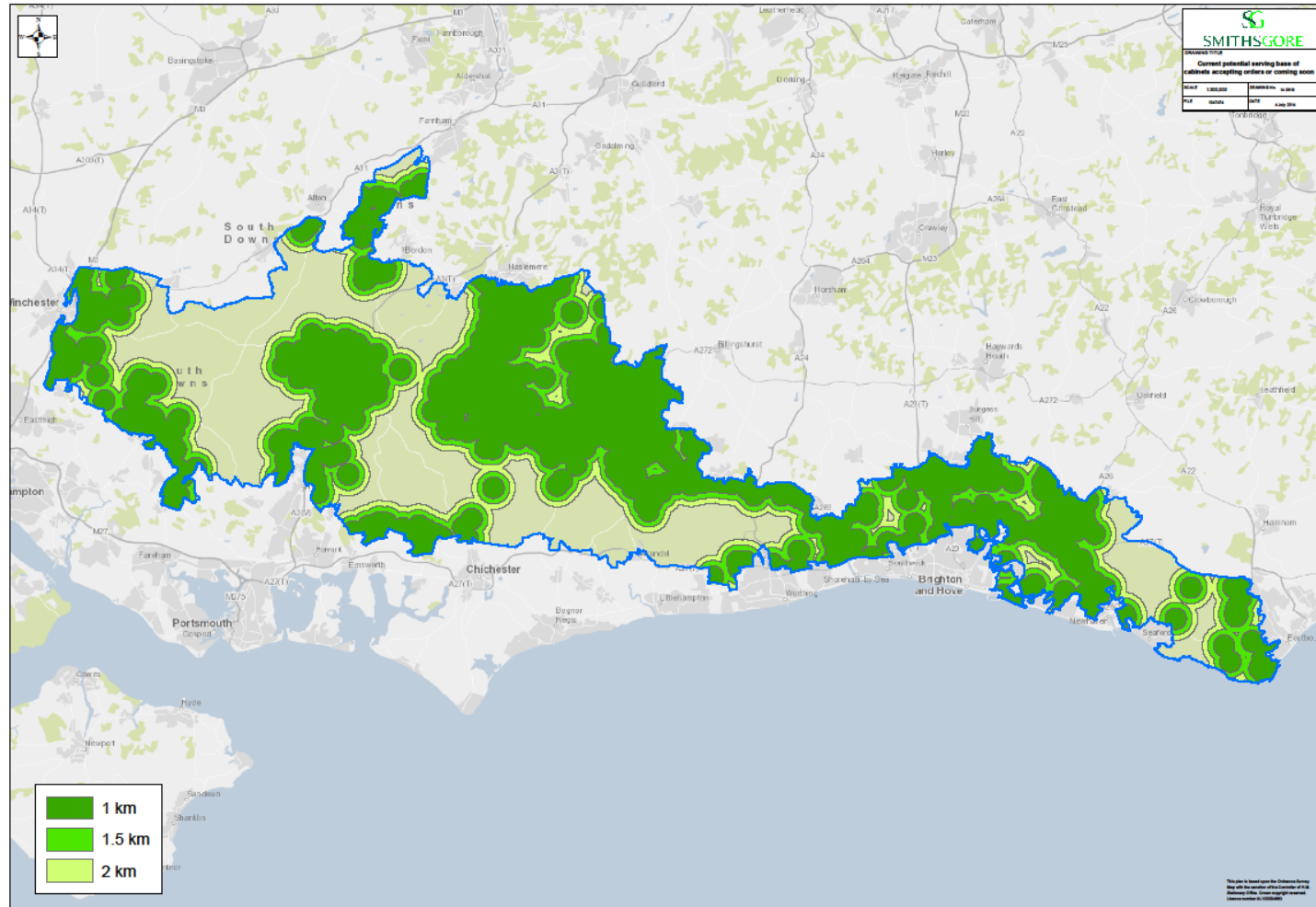
- ▶ BDUK superfast coverage likely to be less than predicted for rural areas - estimated 70% premises
- ▶ Businesses are estimated to be 10% of total premises
- ▶ Demonstrated that a wireless scheme could deliver to most of excluded areas
- ▶ Commercial model for wireless solution is sustainable



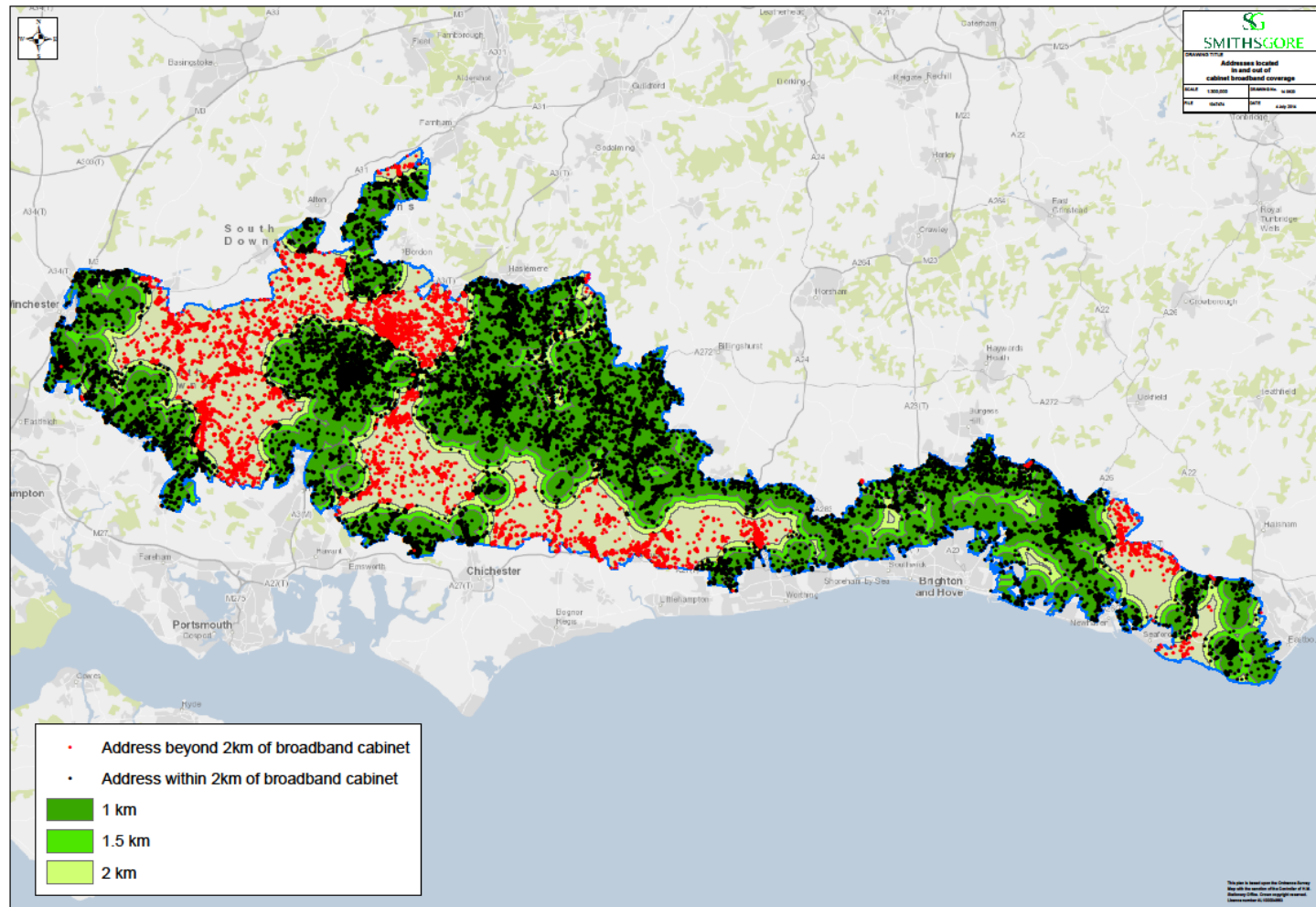
What we expect BDUK/County coverage to look like by area

Dark green is those areas likely to get SuperFast from BDUK funded upgrades (Phase 1)

Palest green are those areas under consideration for Phase 2



30% of premises, 23k in red, will get a minimum of 2mb



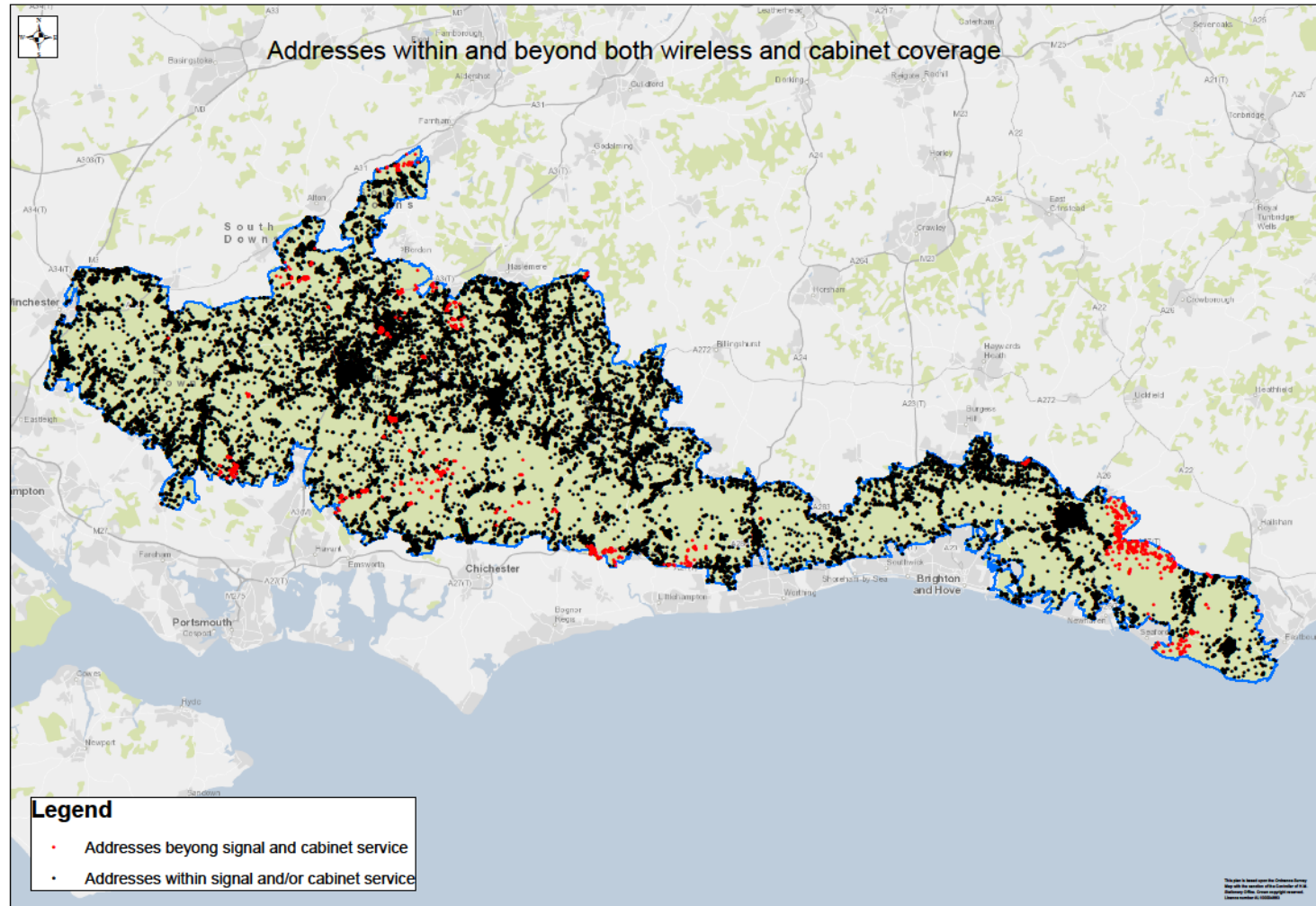
Addresses within and beyond wireless coverage

Legend

- Address beyond useable signal area
- Address within useable signal area
- 88 - -81
- 80 - -71
- 70 - 0

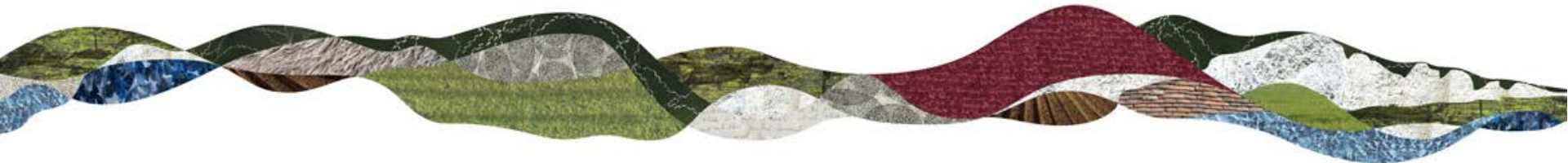
This plan is based upon the Ordnance Survey map with the permission of the Controller of Her Majesty's Stationery Office. Crown copyright reserved. Licence number 0100000000

Combined coverage – BDUK and wireless



SDNPA Broadband Project, 2014

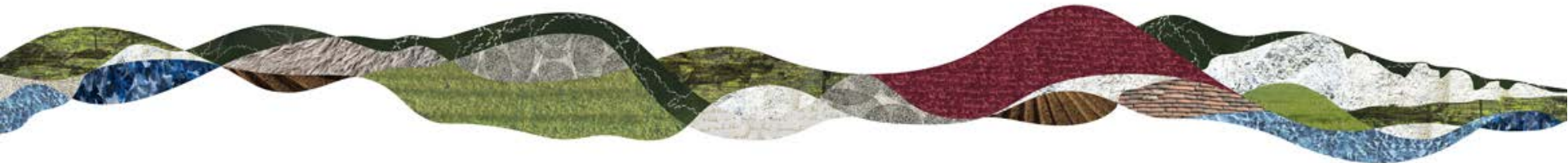
- ▶ Discussed project with landowners and agents
- ▶ Reported findings to Policy and Programme Committee December 2014
- ▶ Shared outputs with County Council Broadband Managers and Rural West Sussex Partnership
- ▶ Approached LEPs



New investment in rural broadband in SDNP area

Hampshire Innovation Fund pilot:

- ▶ £1.2m DCMS funding secured by Hants CC
- ▶ One of eight pilots nationally – total £10m
- ▶ Piloting solutions for final 5% - using mix of technologies to reach remoter (mainly rural) areas
- ▶ Call Flow delivering Hampshire pilot – technologies include fibre to cabinet/premises & wireless
- ▶ Benefits 1,500 premises including parts of National Park
- ▶ Completes Sept. 2016
- ▶ DCMS to bring together results from all the pilots



Broadband Status

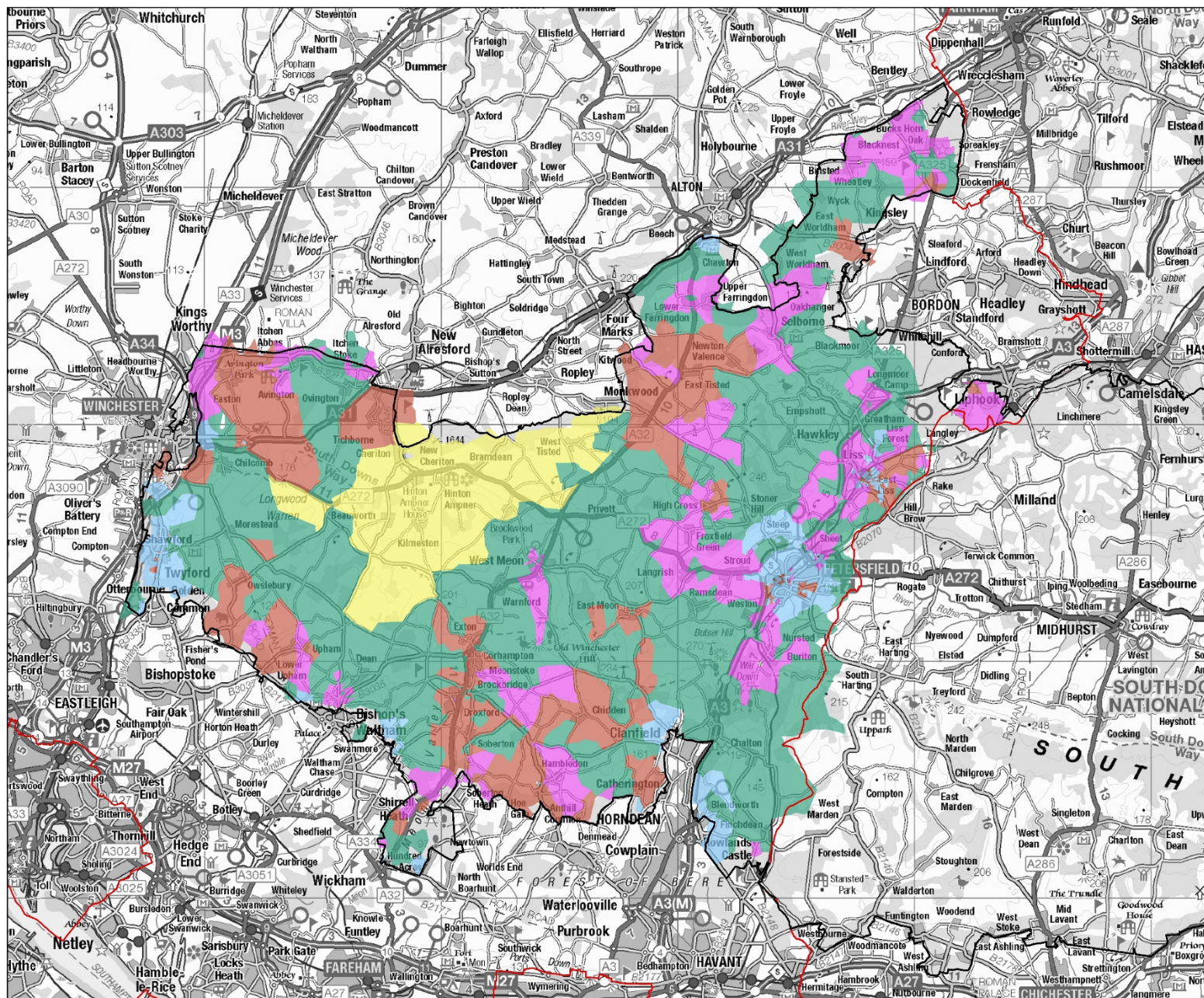
- Wave 1
- Wave 2
- 100% commercially funded coverage
- Innovation Fund
- Some premises in last 4%

- South Downs National Park
- Hampshire County boundary

Scale @ A3 150,000

© Crown copyright and database rights
2015 Ordnance Survey 100050083

Hampshire Superfast
Broadband Programme
Status



New investment in rural broadband in SDNP area

- ▶ £450k Coast to Capital LEP Growth Fund across 15/16 & 16/17 to three projects:
 - Rural: £110k superfast for areas not covered by BDUK roll-out
 - Business parks/estates: £225k superfast for businesses not covered by commercial roll out
 - Ultrafast hub for high growth businesses: £115k for coastal area
 - All primarily business focused; capital grant → leverage
- ▶ Rural (tranche 2)
 - SDNPA & Rural West Sussex Partnership lead
 - Scoping of viability for rural completed
 - Call for grant applications summer 2015 (EOI with guidance)
 - Technology – not prescriptive
 - Need to demonstrate State Aid compliance



Potential EU funding for rural broadband

European Agricultural Fund for Rural Development (EAFRD)

LEP	Funding	Priorities
Enterprise M3	£4.5m	Rural SMEs, rural tourism, food & drink businesses – <i>all first call</i> Agricultural diversification, broadband & strategic projects
Coast to Capital	£3.8m	Rural businesses, tourism = <i>first call</i>
South East LEP	£14.5m	Business training & support, renewables, broadband (£2.4m); <i>first call rural micro/small businesses</i>

- ▶ Defra policy advice to LEPs on EAFRD calls for grants for broadband – prepare now for 2016
- ▶ Discuss further at Policy and Programme Committee 21 July



Contacts



Angie Blowman, Sustainable Futures Manager, SDNPA

T: 01730 819260

M: 07872 410451

angie.blowman@southdowns.gov.uk

David Doxford, Sustainable Economy Officer, SDNPA

T: 01730 819267

M: 07701 294448

david.doxford@southdowns.gov.uk

