



**The Town and Country Planning (Local Planning) (England) Regulations 2012**

## **Adoption Statement**

**NOTICE IS HEREBY GIVEN THAT ON 10 SEPTEMBER 2015  
THE SOUTH DOWNS NATIONAL PARK AUTHORITY  
ADOPTED THE WORLDHAM VILLAGE DESIGN  
STATEMENT AS A SUPPLEMENTARY PLANNING  
DOCUMENT (SPD)**

**Title : Worldham Village Design Statement Supplementary Planning Document**

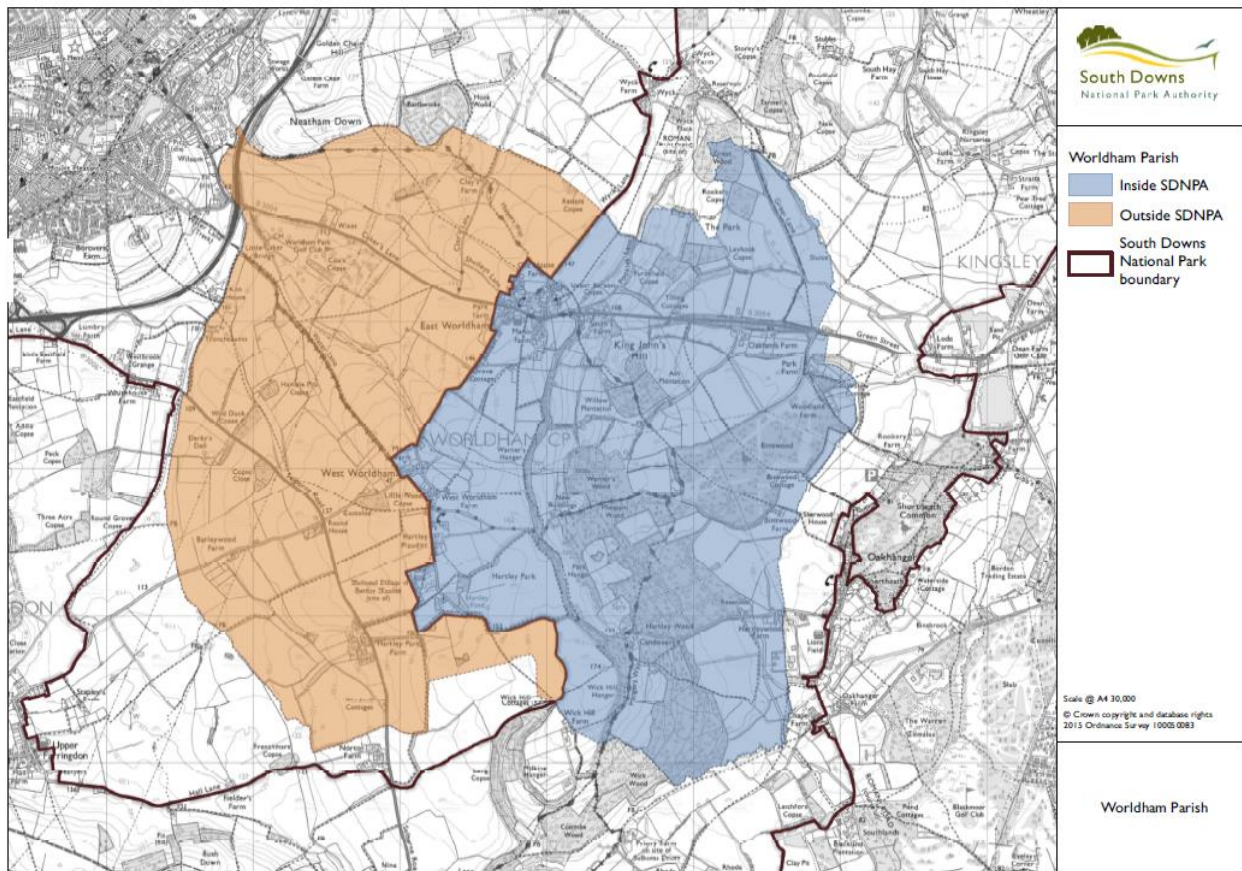
**Subject matter: The SPD sets out a framework of guidelines and principals relating primarily to design matters against which future planning applications will be assessed**

**Area: The SPD applies only to the part of the civil parish of Worldham which is within the South Downs National Park Authority Area (see map below).**

**Date of adoption: 10 September 2015**

**Grievances:** Any person aggrieved by the Supplementary Planning Document (SPD) may apply to the High Court for permission to apply for judicial review of the decision to adopt the SPD. Any such application must be made promptly and in any event not later than 3 months after the date on which the SPD was adopted.

# Map showing area of Worldham Parish within the South Downs National Park



Nb. This adoption statement relates only to the area within the South Downs National Park