

Landmark 21  
Amberley Castle  
Zone of Theoretical Visibility  
OS Grid Reference - TQ02721319

The ZTV is calculated from an observer height of 2m above ground level using the OS Terrain 5 Digital Terrain Model (DTM). Earth curvature and atmospheric refraction have been taken into account.

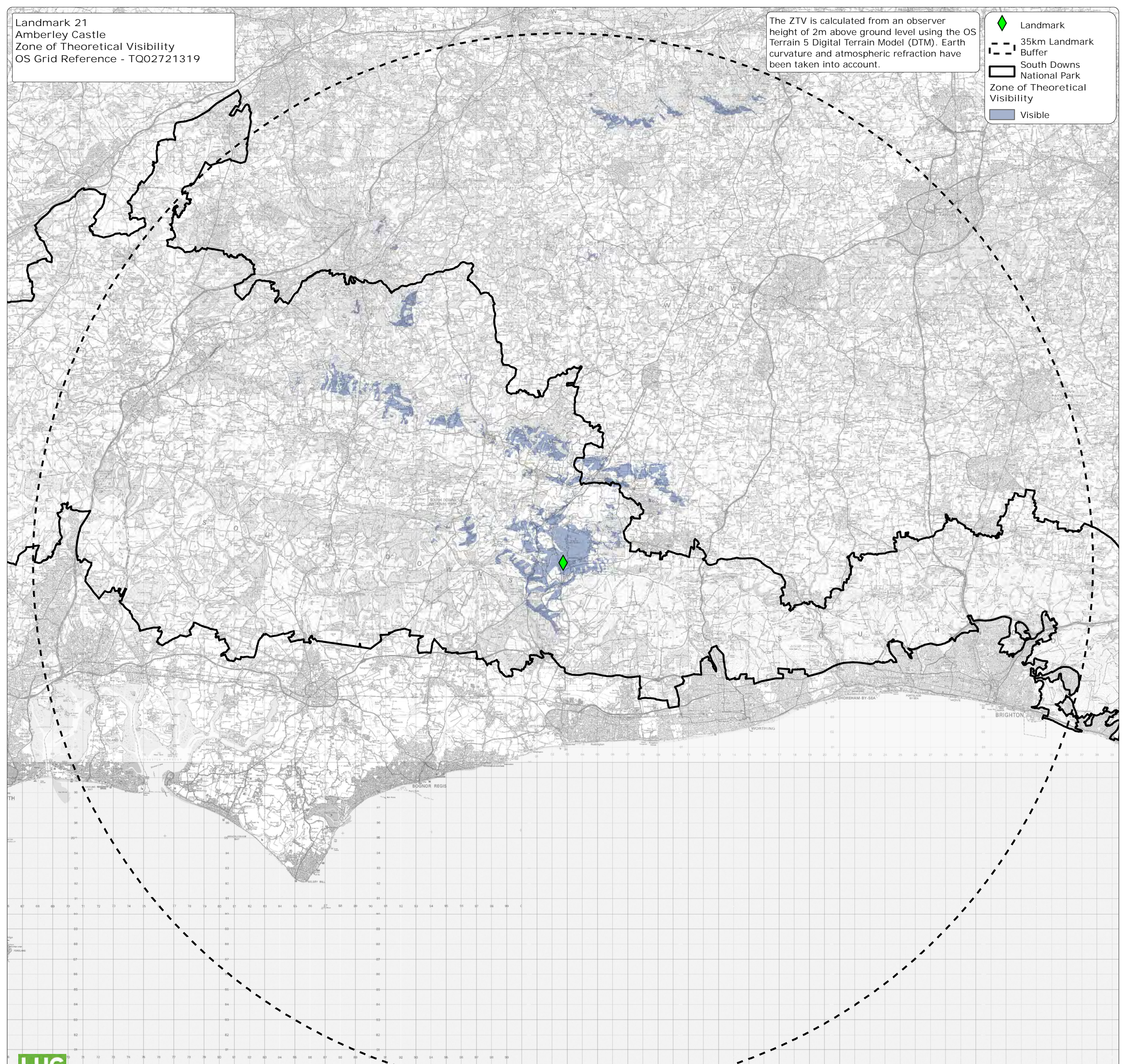
Landmark

35km Landmark Buffer

South Downs National Park

Zone of Theoretical Visibility

Visible



0510

km

N