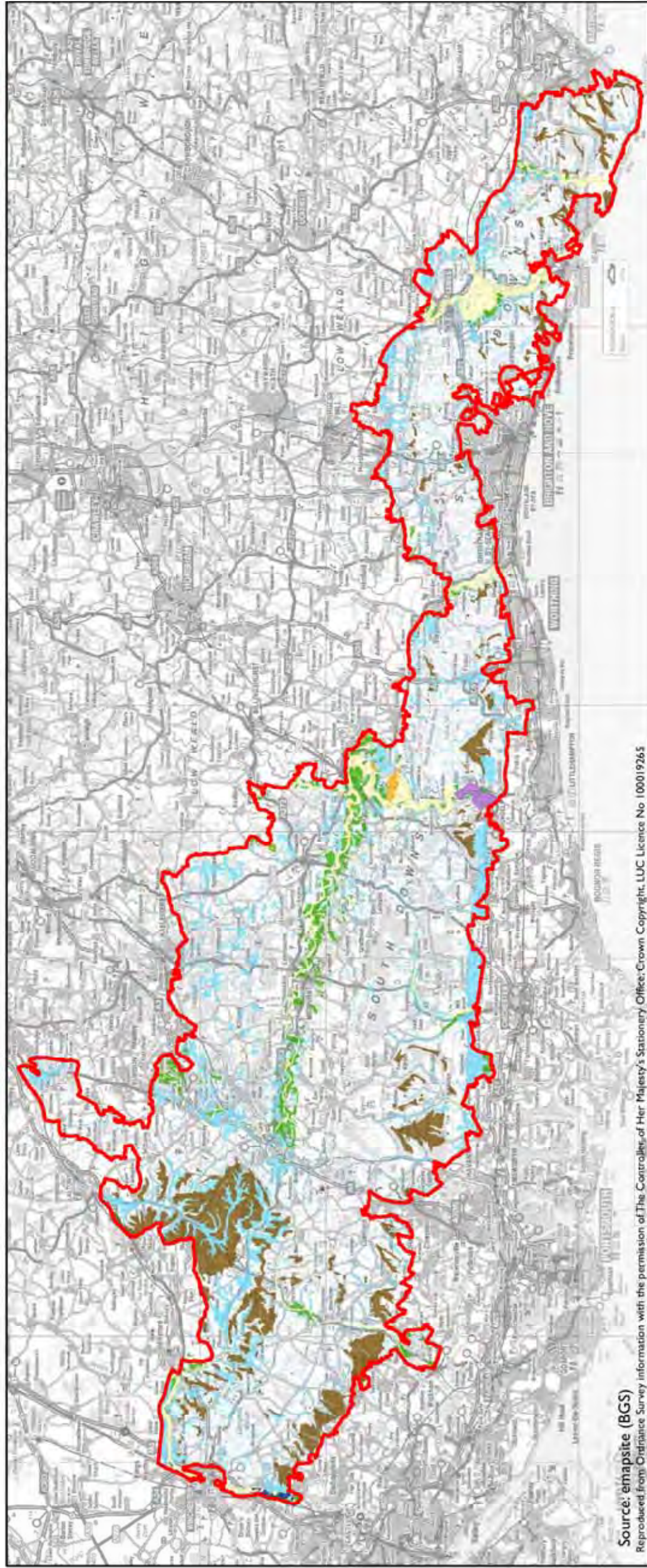
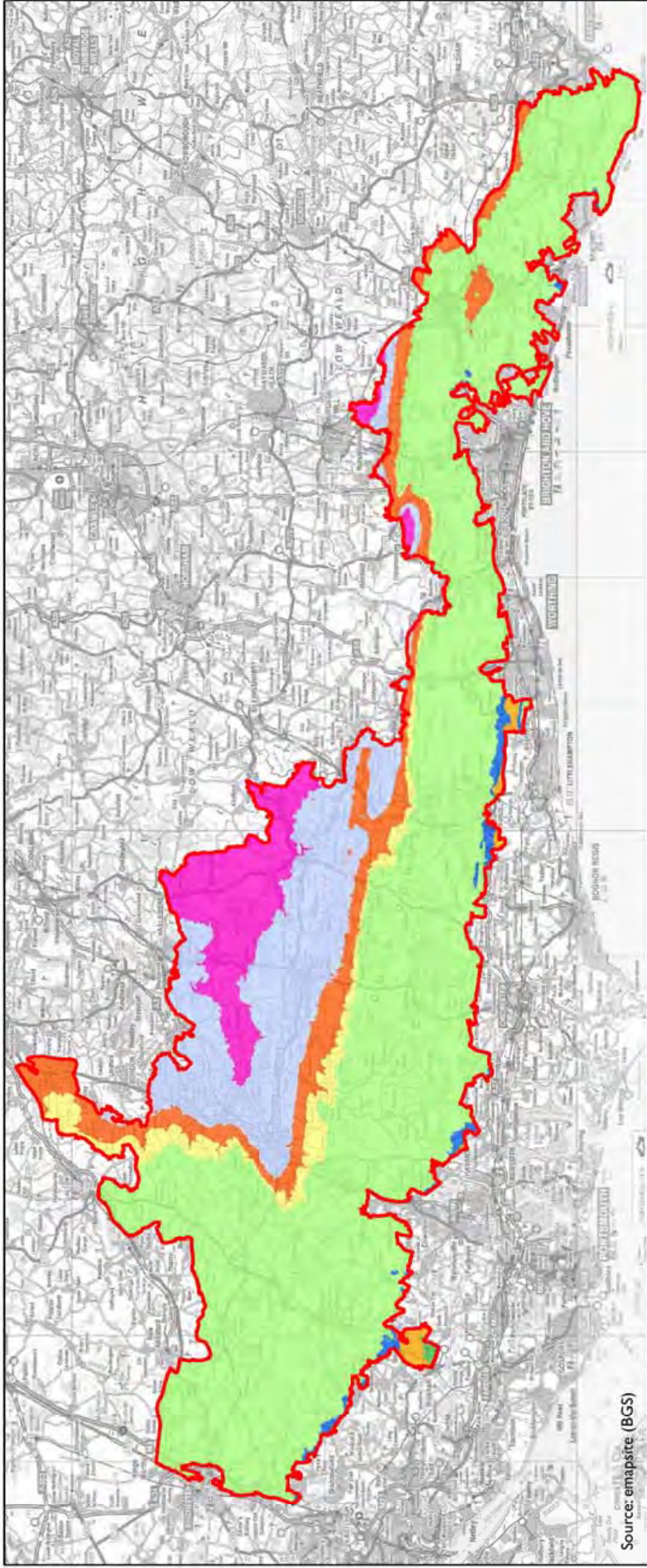
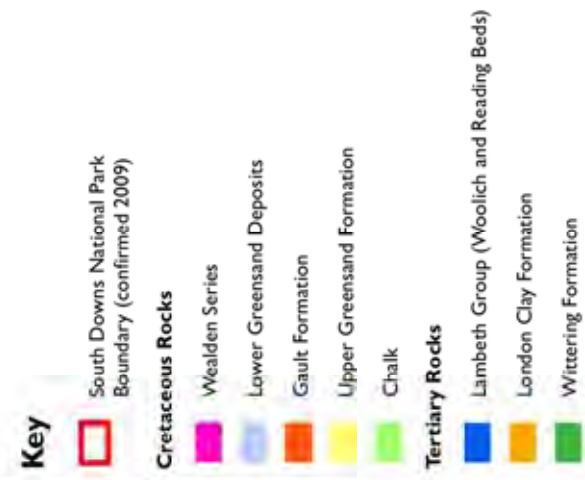


South Downs Integrated Landscape Character Assessment (Updated)

Figure 3.1:
Simplified Geology



South Downs Integrated Landscape Character Assessment (Updated)

Figure 3.2: Topography

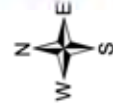
Key

South Downs National Park Boundary (confirmed 2009)

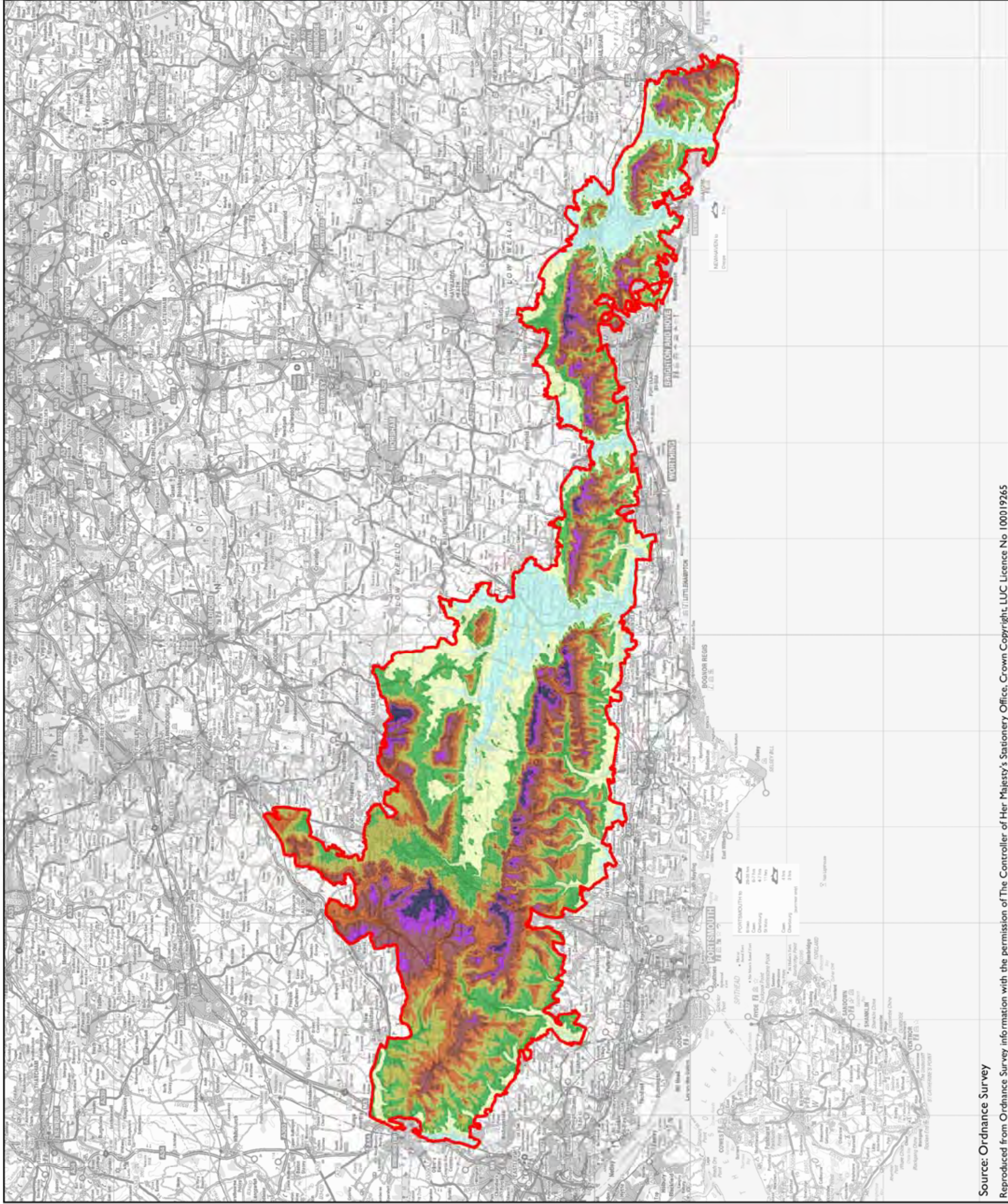
Elevation (m)



Date Prepared: 22/09/2011



LAND USE CONSULTANTS
ENVIRONMENTAL PLANNING, DESIGN AND MANAGEMENT

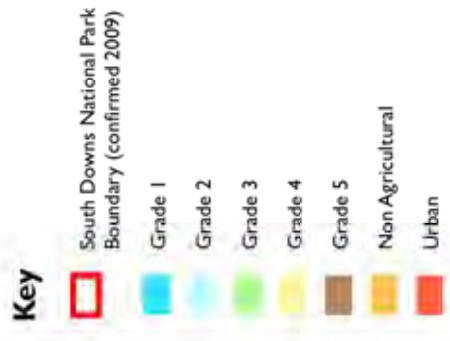


Source: Ordnance Survey

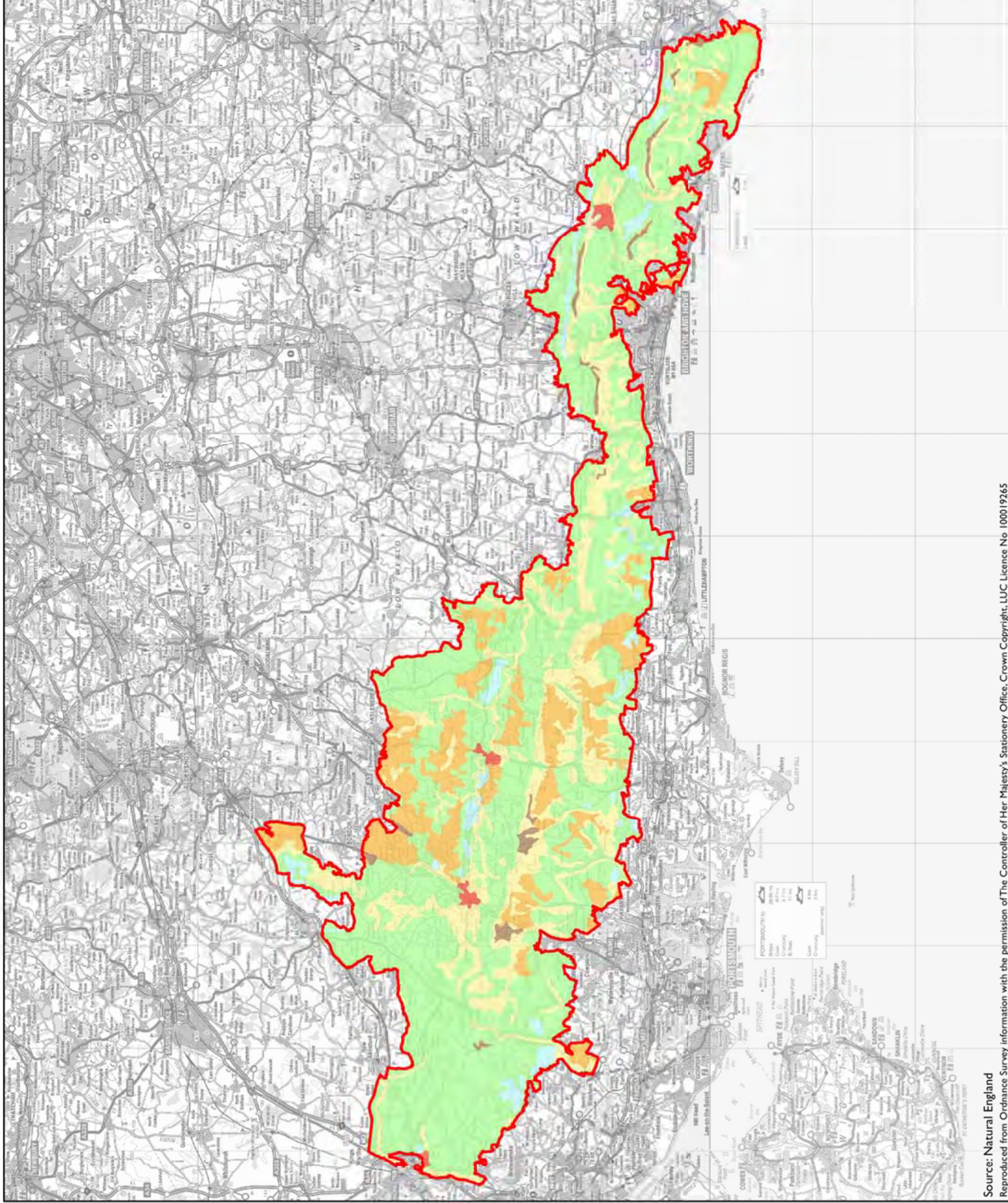
Reproduced from Ordnance Survey information with the permission of The Controller of Her Majesty's Stationary Office. Crown Copyright. LUC Licence No. 100019265

S:\5200\5248 South Downs National Park LCA\B Project Working\GIS\Themes\ArcGIS9\5248-01_Topography_3_2.mxd

South Downs Integrated Landscape Character Assessment (Updated) Figure 3.3: Agricultural Land Classification



Date Prepared: 22/09/2011



South Downs Integrated Landscape Character Assessment (Updated)

Figure 4.1: Historic Landscape Classification

Key

South Downs National Park Boundary (confirmed 2009)

Fieldscapes

- 0101- Fieldscapes Assarts
- 0102- Early Enclosures
- 0103- Recent Enclosures
- 0104- Modern Fields

Woodland

- 0201- Pre 1800 Woodland
- 0202- Post 1800 Woodland

Horticulture

- 03- Horticulture

Unenclosed

- 04- Unenclosed

Settlement

- 0501- Pre 1800 Settlement
- 0502- Post 1800 Expansion Settlement

Valley Floor

- 06- Valley Floor

Coastal

- 07- Coastal

Industry

- 08- Industry

Designed Landscapes

- 09- Designed Landscapes

Military

- 10- Military

Communications

- 11- Communications

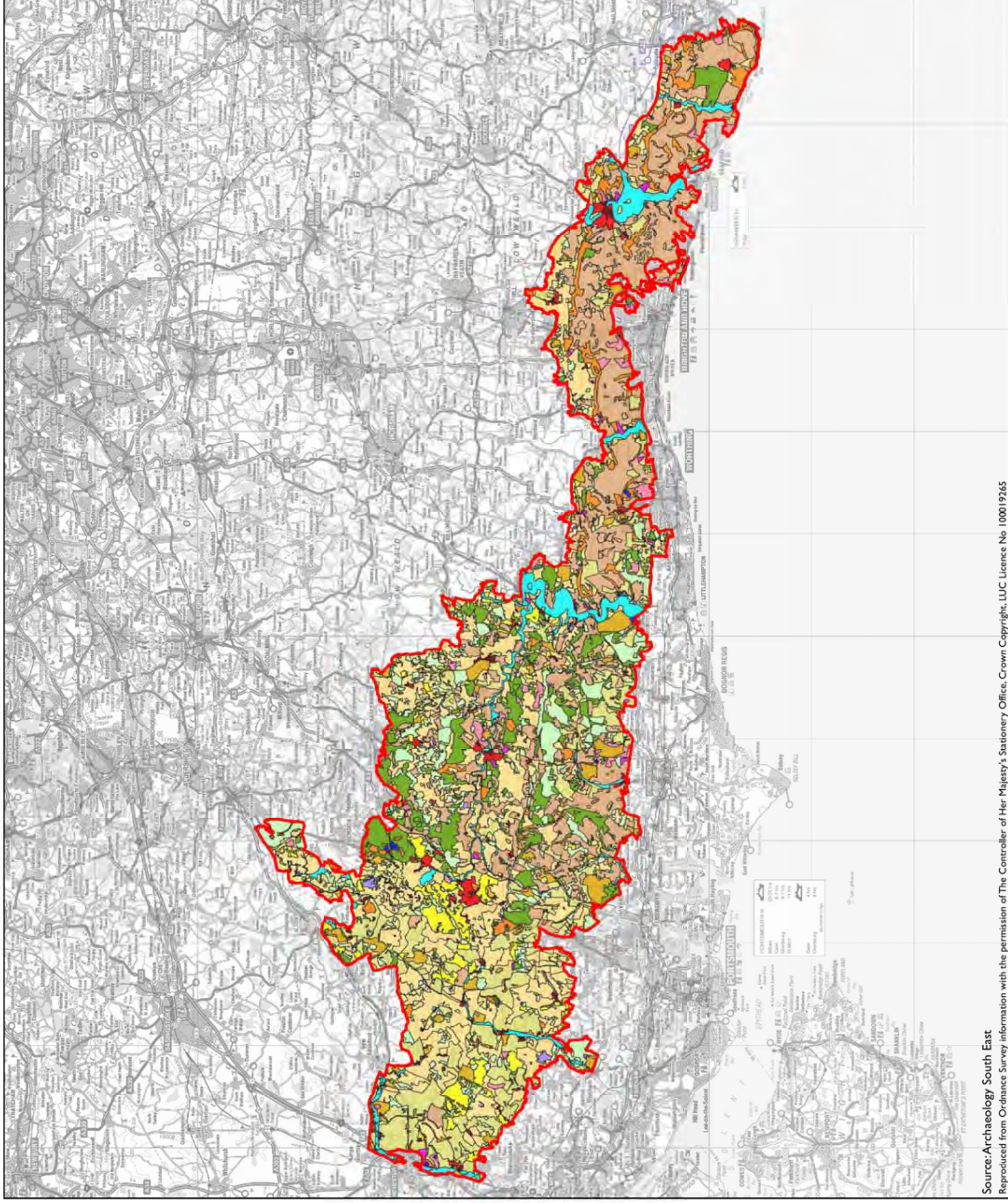
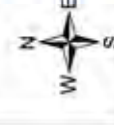
Water

- 12- Water

Recreation

- 13- Recreation

Date Prepared: 22/09/2011



South Downs Integrated Landscape Character Assessment (Updated)

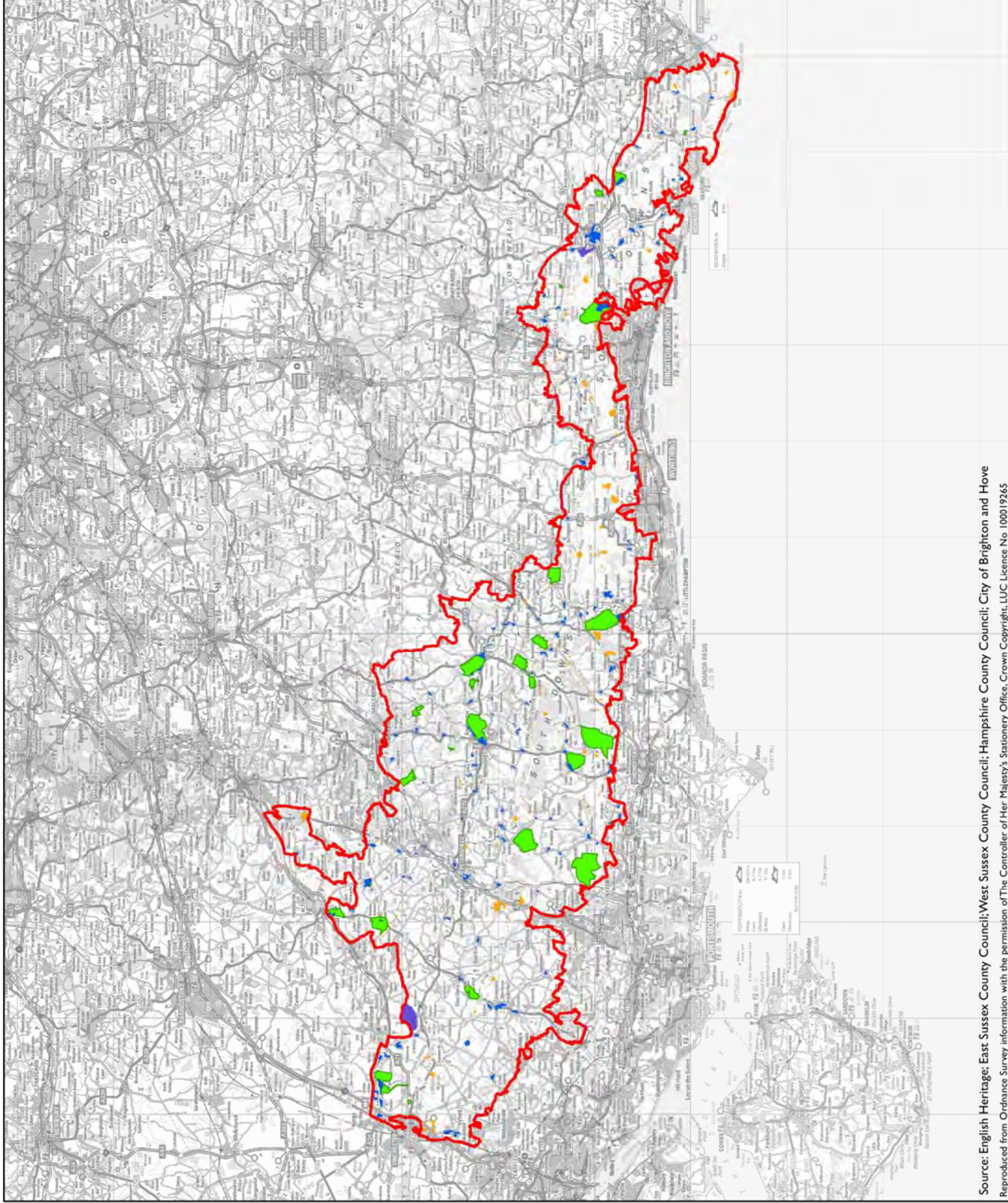
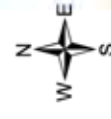
Figure 4.2: Historic Designations

Key

- South Downs National Park Boundary (confirmed 2009)
- Scheduled Ancient Monuments
- Historic Parks and Gardens
- Registered Battlefields
- Conservation Areas *

* Conservation Area information has not been updated on this map (since 2005) as it was not possible to collate data for all Local Authorities when the map was revised in 2011.

Date Prepared: 22/09/2011



South Downs Integrated Landscape Character Assessment (Updated)

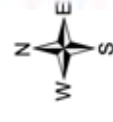
Figure 5.1: National Character Areas

Key

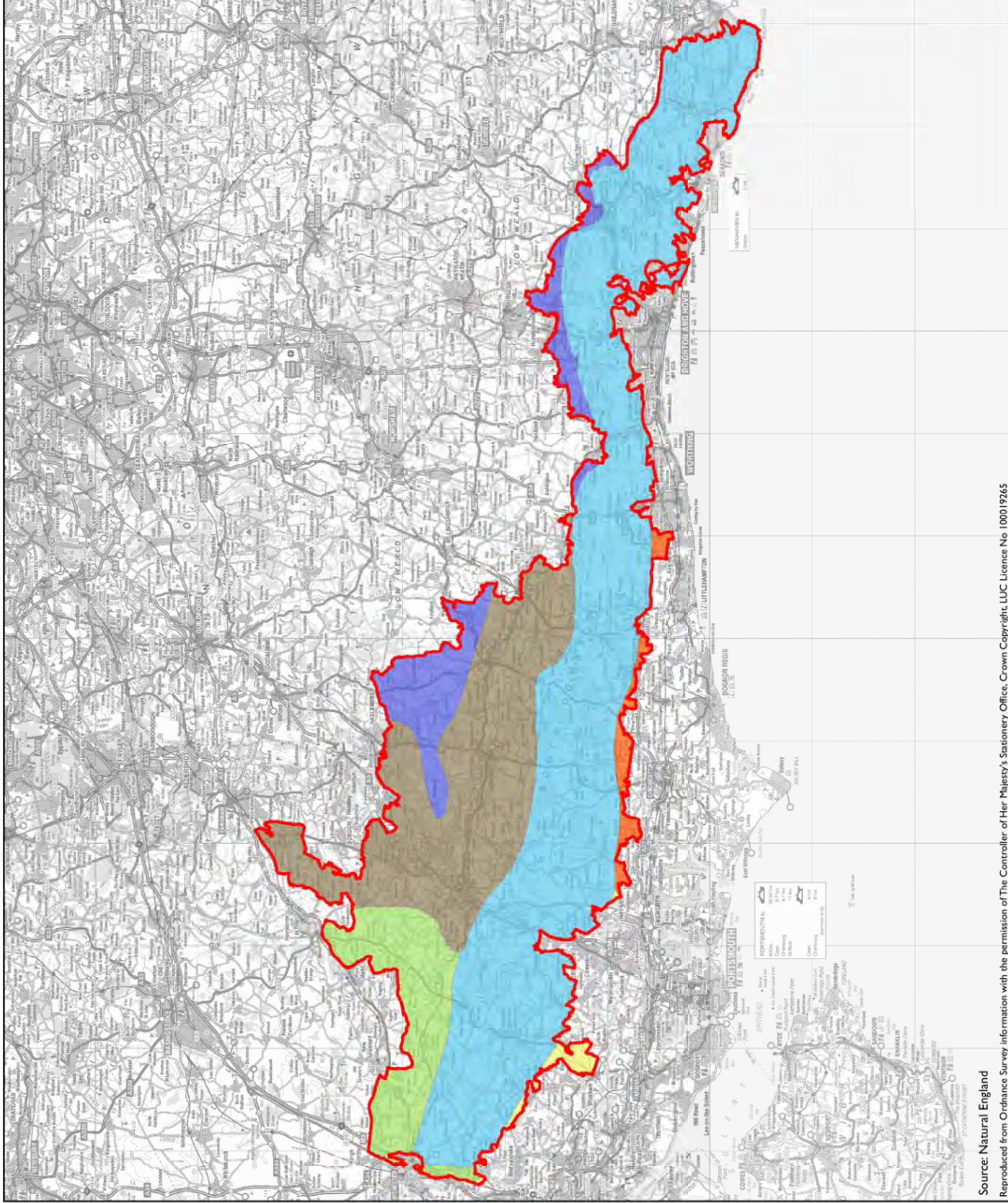
South Downs National Park Boundary (confirmed 2009)

- National Character Areas
- Hampshire Downs
- Low Weald
- South Coast Plain
- South Downs
- South Hampshire Lowlands
- Wealden Greensand

Date Prepared: 11/01/2012



LAND USE CONSULTANTS
ENVIRONMENTAL PLANNING DESIGN AND MANAGEMENT



Source: Natural England

Reproduced from Ordnance Survey information with the permission of The Controller of Her Majesty's Stationary Office. Crown Copyright. LUC Licence No. 100019265

S:\5200\5248 South Downs National Park LCA\B Project Working\GIS\Themes\ArcGIS9\5248-01_Nat_Areas_5_1.mxd

South Downs Integrated Landscape Character Assessment (Updated)

Figure 5.2i: Statutory Nature Conservation Designations

Key

South Downs National Park Boundary (confirmed 2009)

Statutory Designations

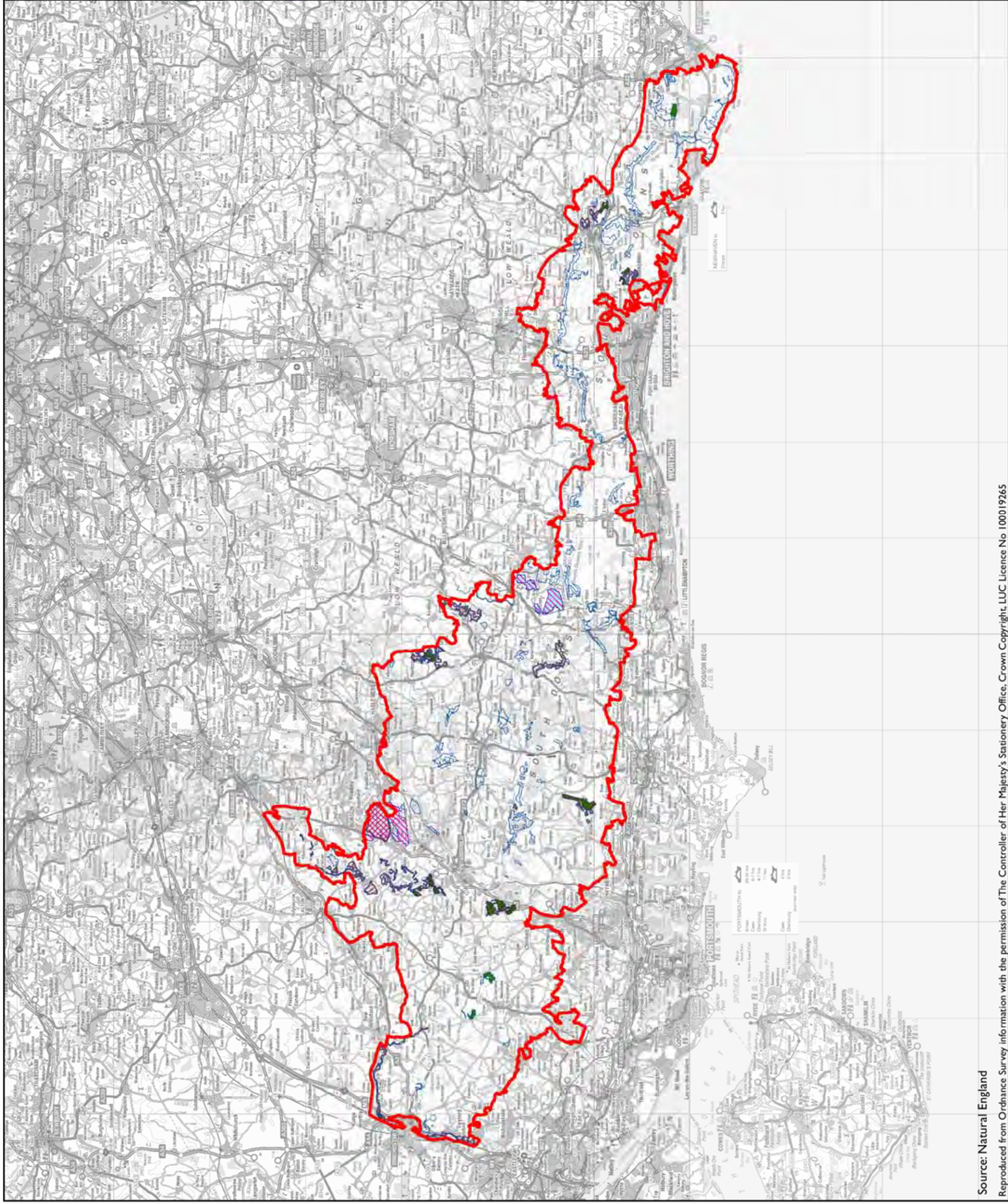
Sites of Special Scientific Interest

Special Areas of Conservation

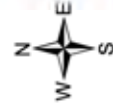
Special Protection Areas

National Nature Reserves

RAMSAR Sites



Date Prepared: 22/09/2011



LAND USE CONSULTANTS
ENVIRONMENTAL PLANNING DESIGN AND MANAGEMENT

Source: Natural England

Reproduced from Ordnance Survey information with the permission of The Controller of Her Majesty's Stationary Office. Crown Copyright. LUC Licence No. 100019265

S:\5200\5248 South Downs National Park LCA\B Project Working\GIS\Themes\ArcGIS9\5248-01_Stat_Designations_5_21.mxd

South Downs Integrated
Landscape Character
Assessment (Updated)
Figure 5.2ii: Non-Statutory
Nature Conservation
Designations

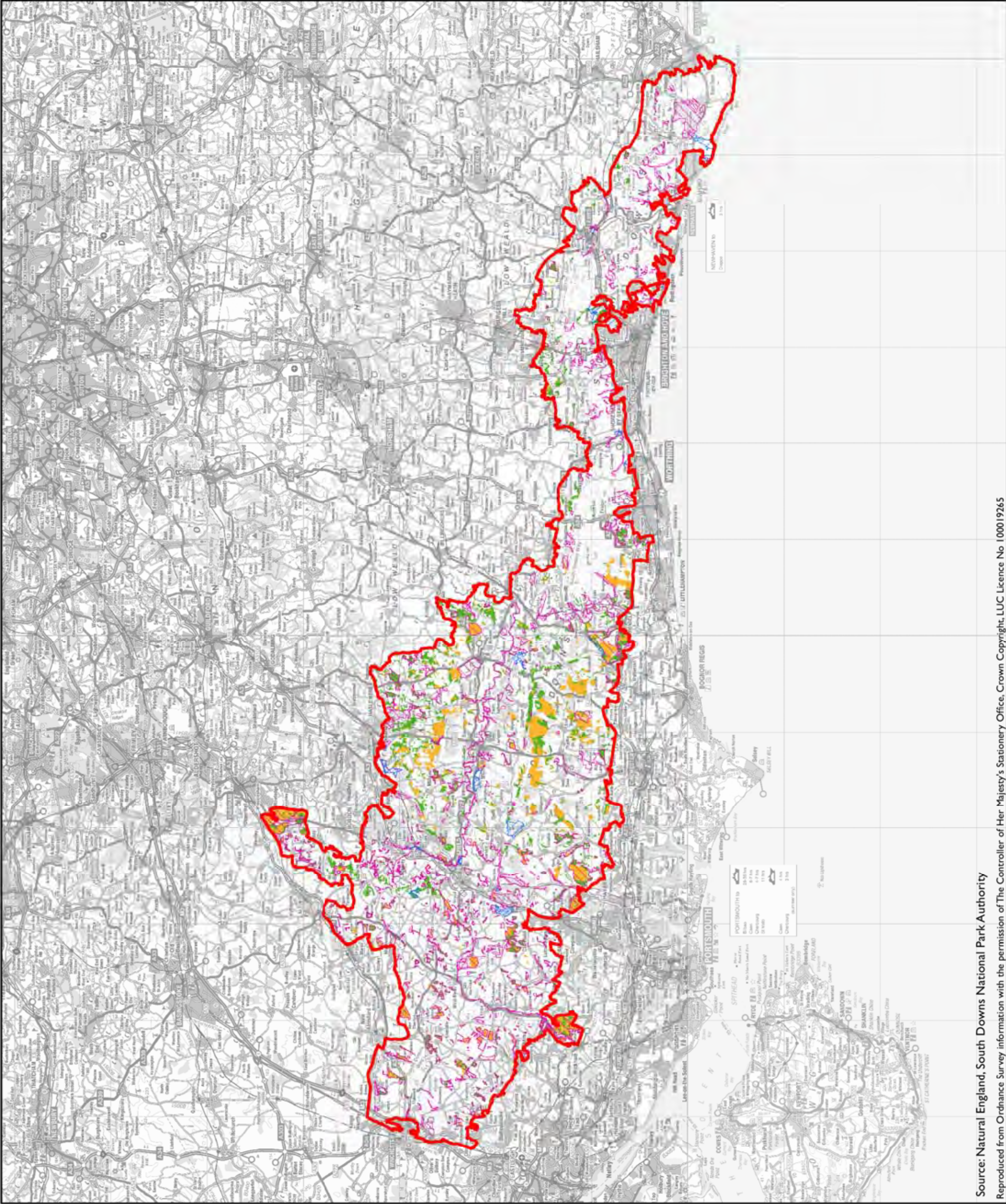
- Key
- South Downs National Park
Boundary (confirmed 2009)
 - Local Nature Reserves
 - Sites of Nature Conservation Importance
 - Ancient Woodland
 - Ancient Semi-Natural Woodland
 - Plantations on Ancient Woodland Sites

Date Prepared: 22/09/2011

0 5 10 20 km

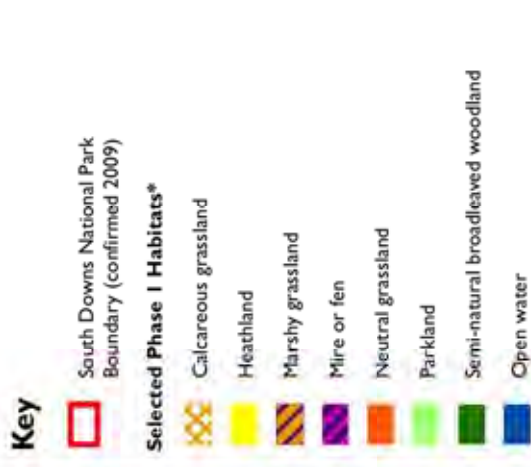
N
W E
S

LAND USE
CONSULTANTS
ENVIRONMENTAL
PLANNING DESIGN AND
MANAGEMENT



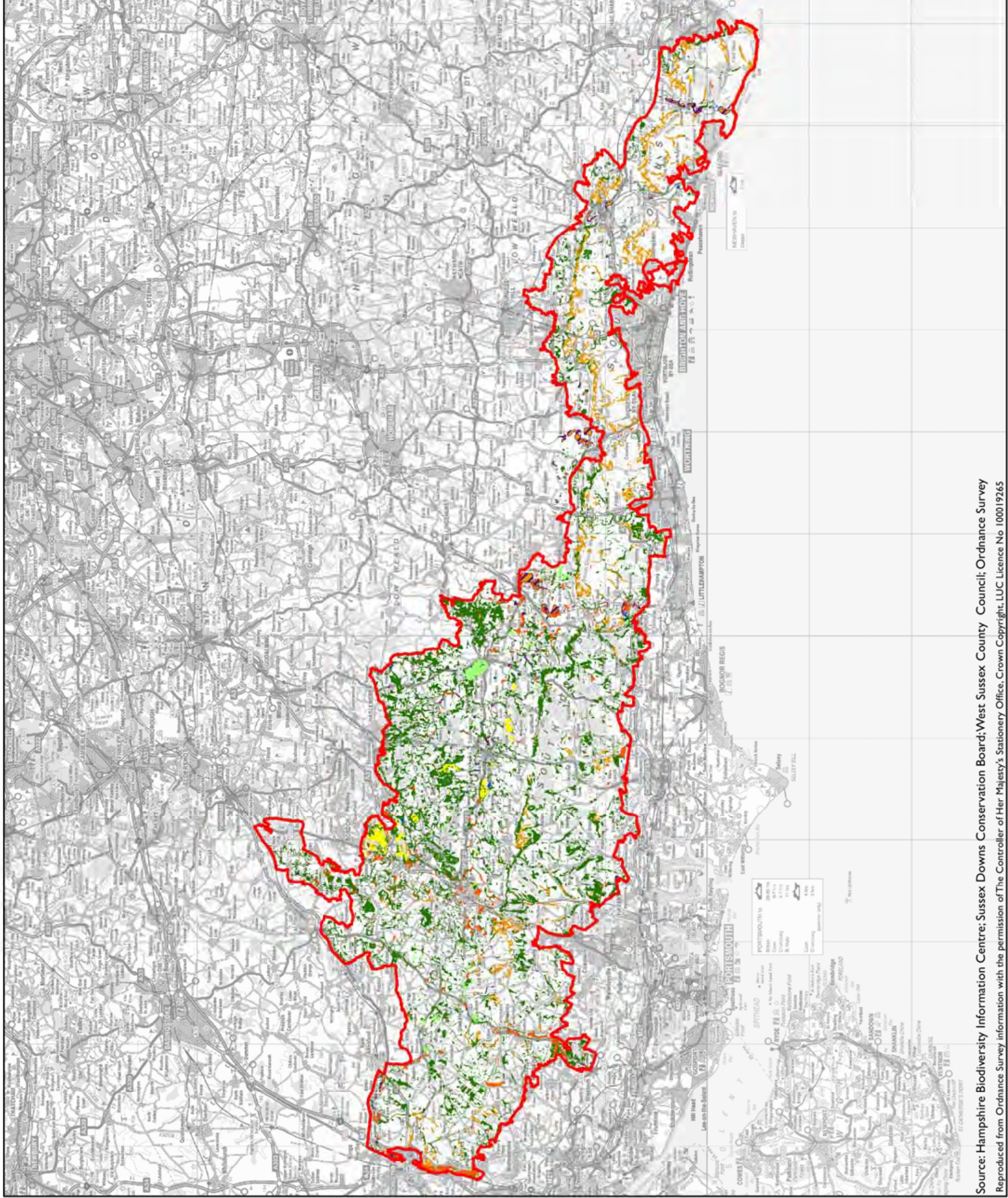
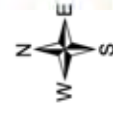
South Downs Integrated Landscape Character Assessment

Figure 5.3: Distribution of Select Phase I Habitat Types



*This map shows Phase I habitat data cropped to the boundary relating to the South Downs National Park Designation Order, 2002. Data for additional areas within the confirmed South Downs National Park Boundary was not available at the time of updating this assessment.

Date Prepared: 15/09/2005
Boundary updated: 22/09/2011



South Downs Integrated Landscape Character Assessment (Updated)

Figure 6.1: Broad Regional Areas

Key

South Downs National Park Boundary (confirmed 2009)

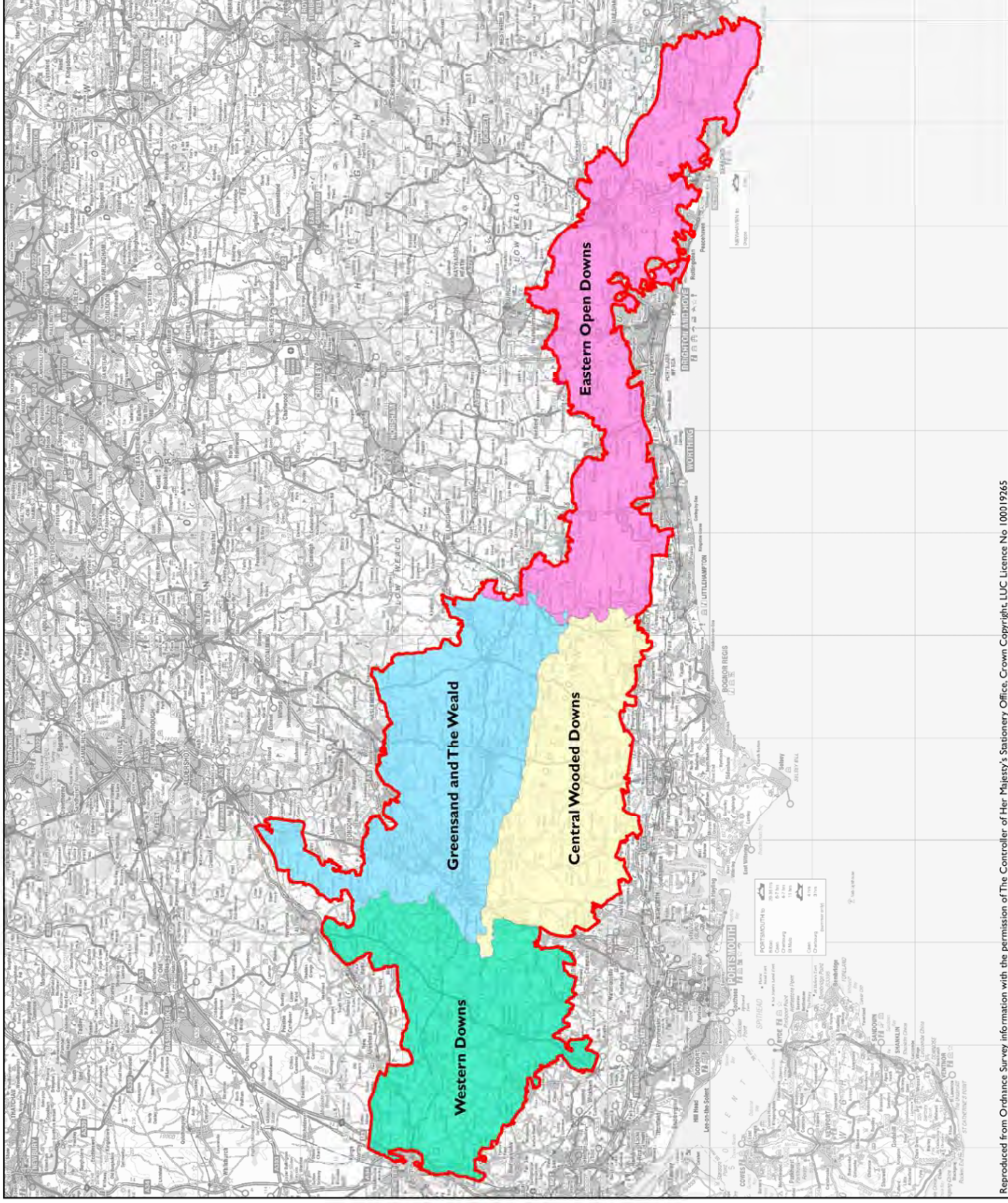
Region

Central Wooded Downs

Eastern Open Downs

Greensand and The Weald

Western Downs



South Downs Integrated
Landscape Character
Assessment (Updated)

Figure 6.7: Relative
importance of cropping
as a land use in the
South Downs

Key

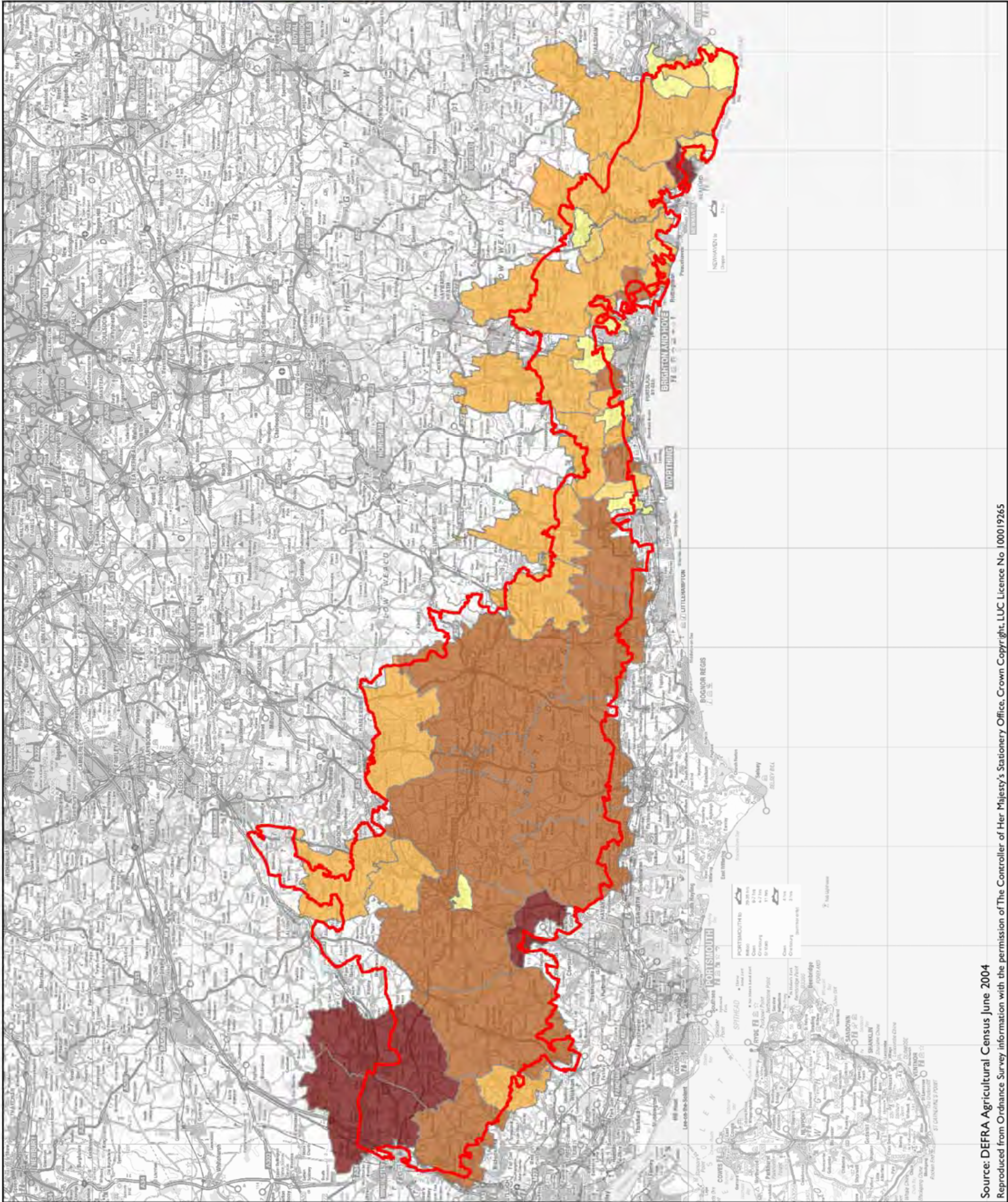
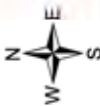
South Downs National Park
Boundary (confirmed 2009)

Cropped land as proportion of total crop and grass land



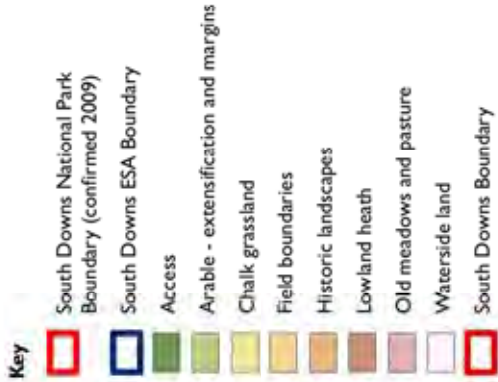
Data analysed and mapped using
Office of National Statistics
Middle Layer Super Output Areas
(MSOA)

Date Prepared: 03/01/2006
Boundary updated: 22/09/2011

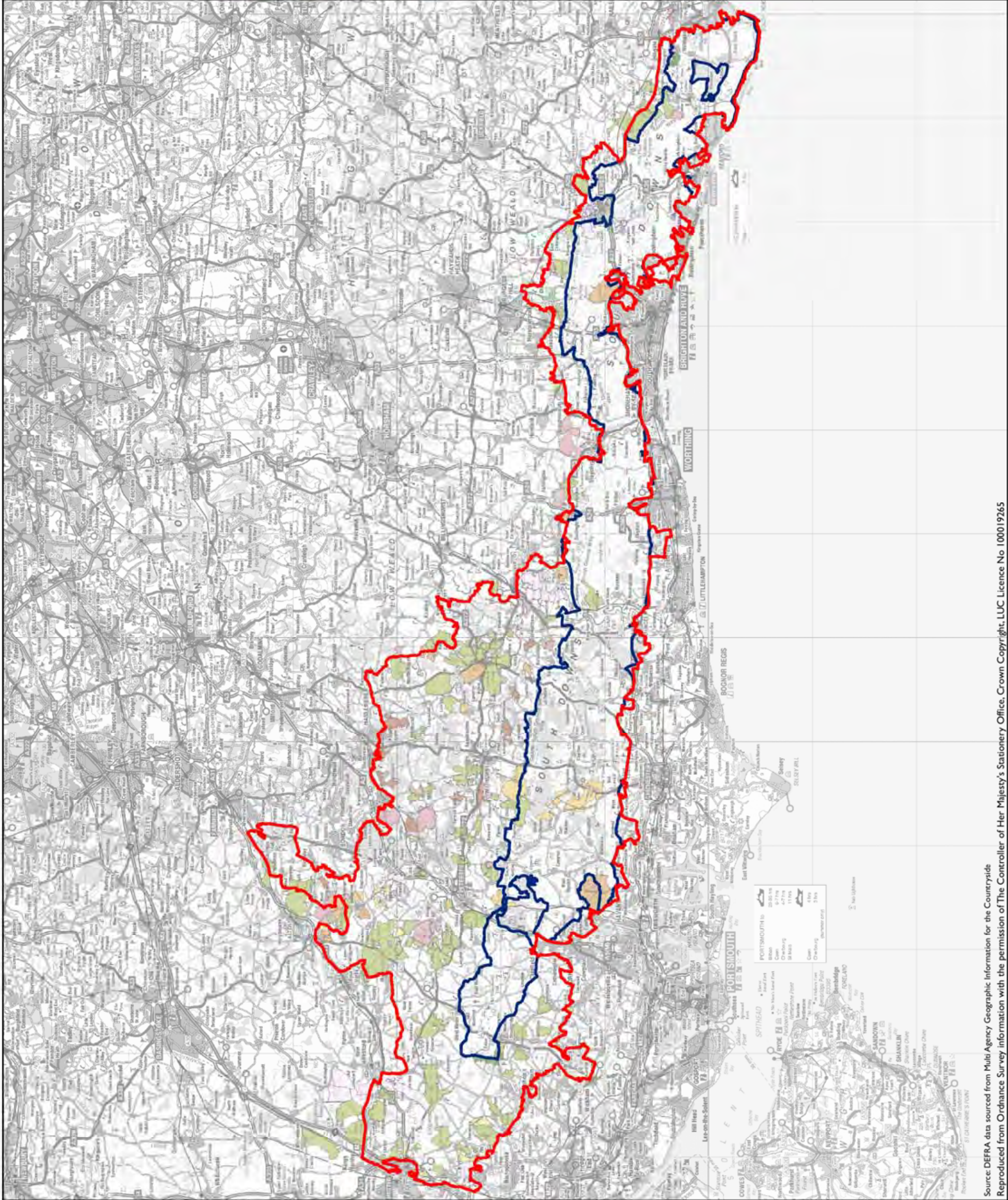


South Downs Integrated
Landscape Character
Assessment (Updated)

Figure 6.10: Countryside
Stewardship Scheme (CSS)
agreements in the
South Downs



Date Prepared: 28/12/2005
Boundary updated: 22/09/2011



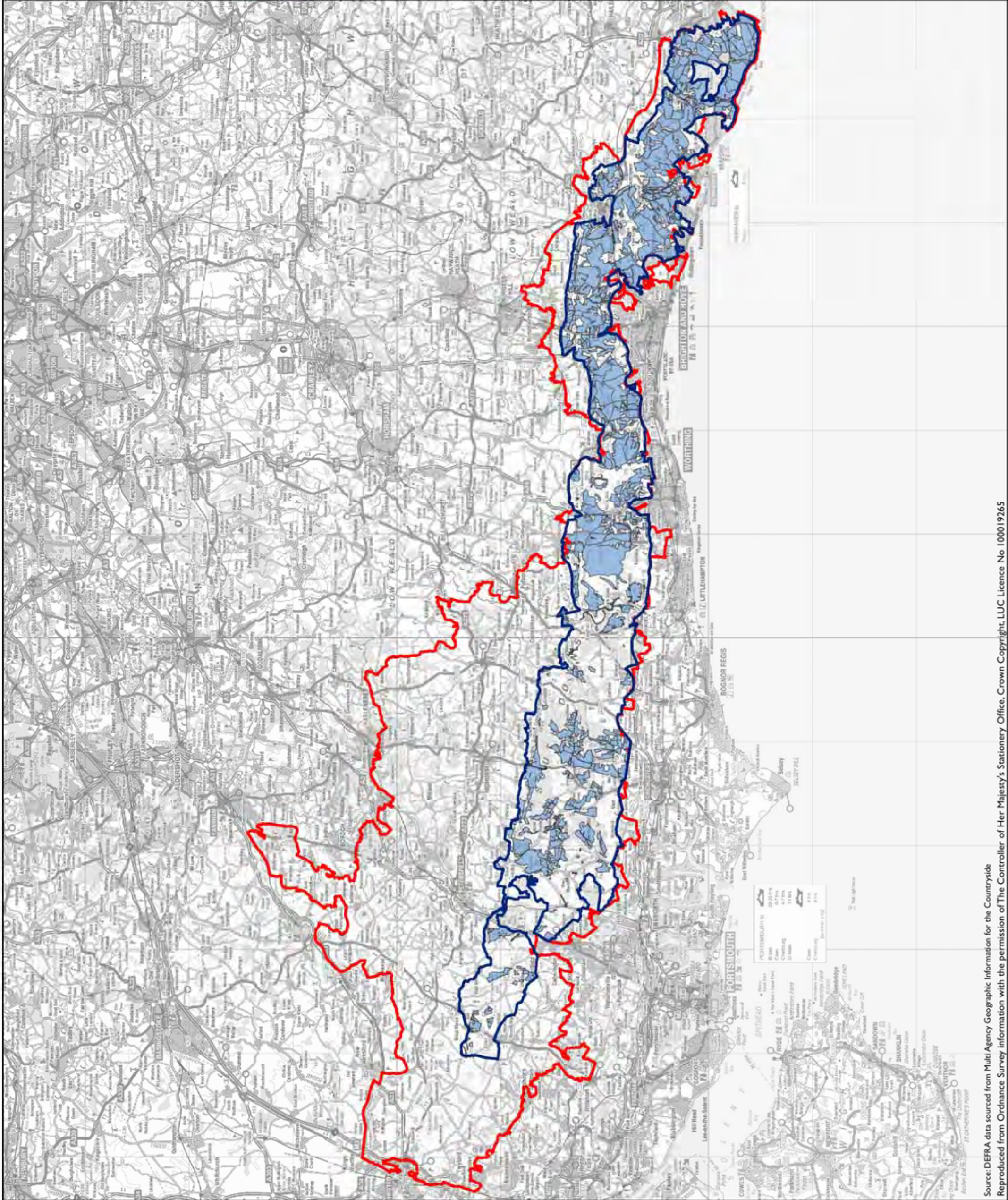
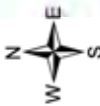
South Downs Integrated
Landscape Character
Assessment (Updated)

Figure 6.11: Environmentally
Sensitive Area (ESA)
agreements in the
South Downs

Key

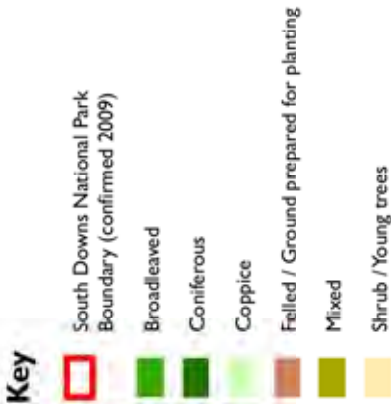
- South Downs National Park
Boundary (confirmed 2009)
- South Downs ESA Boundary
- South Downs ESA Agreements

Date Prepared: 28/12/2005
Boundary updated: 22/09/2011

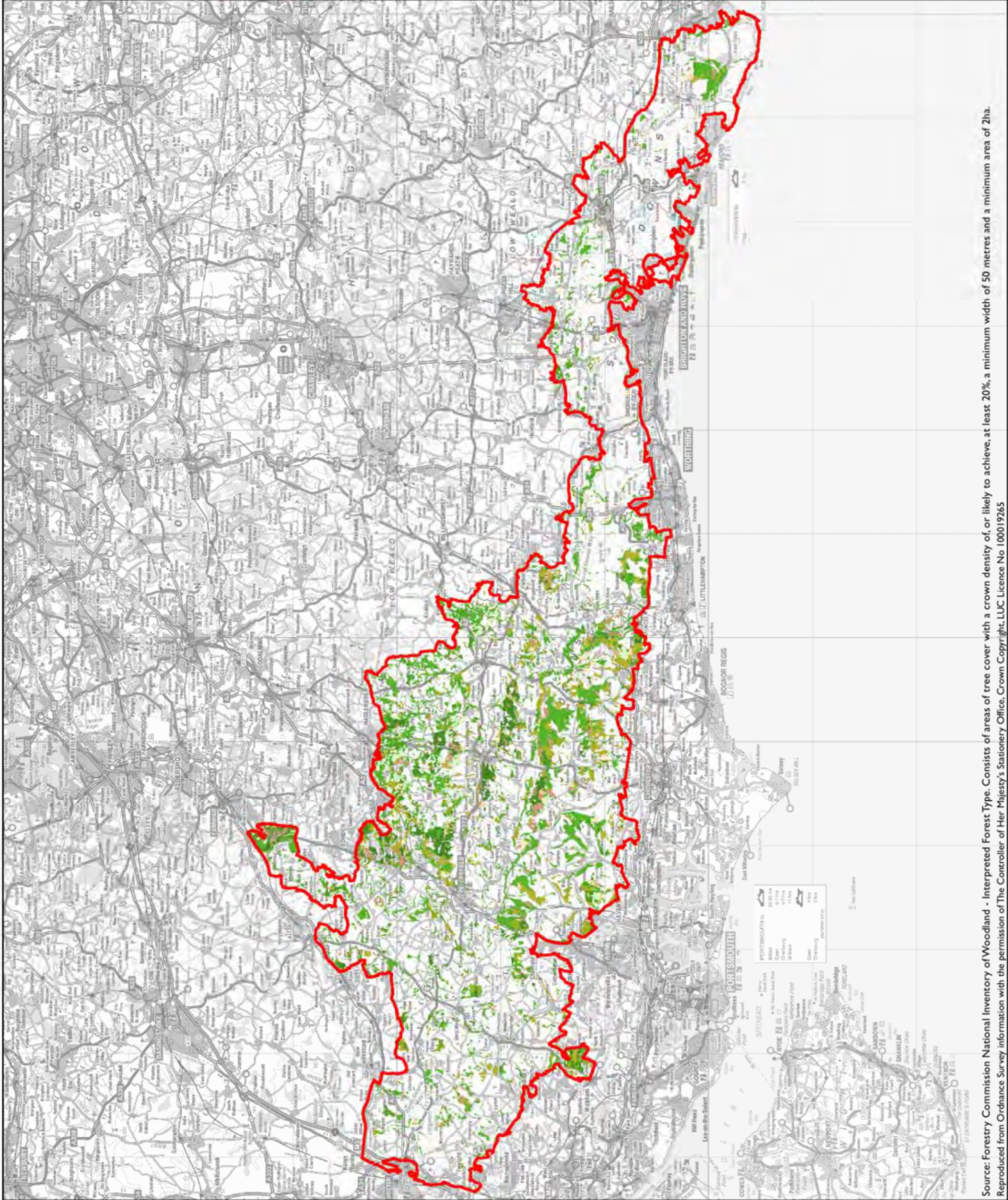
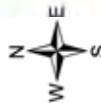


South Downs Integrated
Landscape Character
Assessment (Updated)

Figure 6.12: Woodland
distribution (interpreted
forest types) in the
South Downs



Date Prepared: 22/09/2011



Source: Forestry Commission National Inventory of Woodland - Interpreted Forest Type. Consists of areas of tree cover with a crown density of, or likely to achieve, at least 20%, a minimum width of 50 metres and a minimum area of 2ha.

Reproduced from Ordnance Survey information with the permission of The Controller of Her Majesty's Stationery Office. Crown Copyright, LUC Licence No 100019265

S:\520015248 South Downs National Park LCA18 Project\Working\GIS\Themes\ArcGIS\5248-01_IJT_6_12.mxd

South Downs Integrated Landscape Character Assessment (Updated)

Figure 6.13: Countryside Access

Key

South Downs National Park Boundary (confirmed 2009)

Long Distance Paths

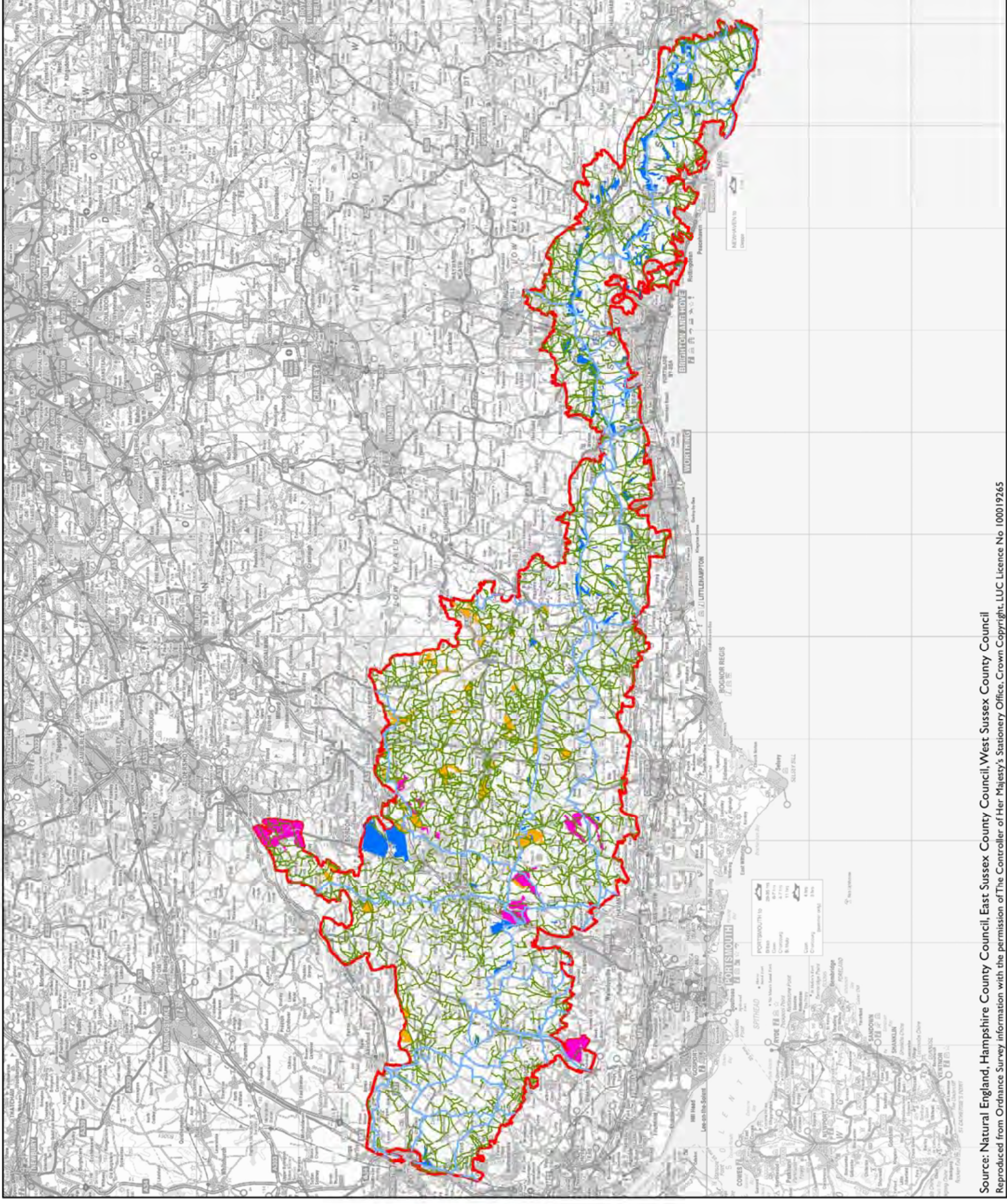
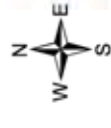
Other Public Rights of Way

Open Access Land

Section 16 Land

Registered Common Land

Date Prepared: 22/09/2011



South Downs Integrated
Landscape Character
Assessment (Updated)

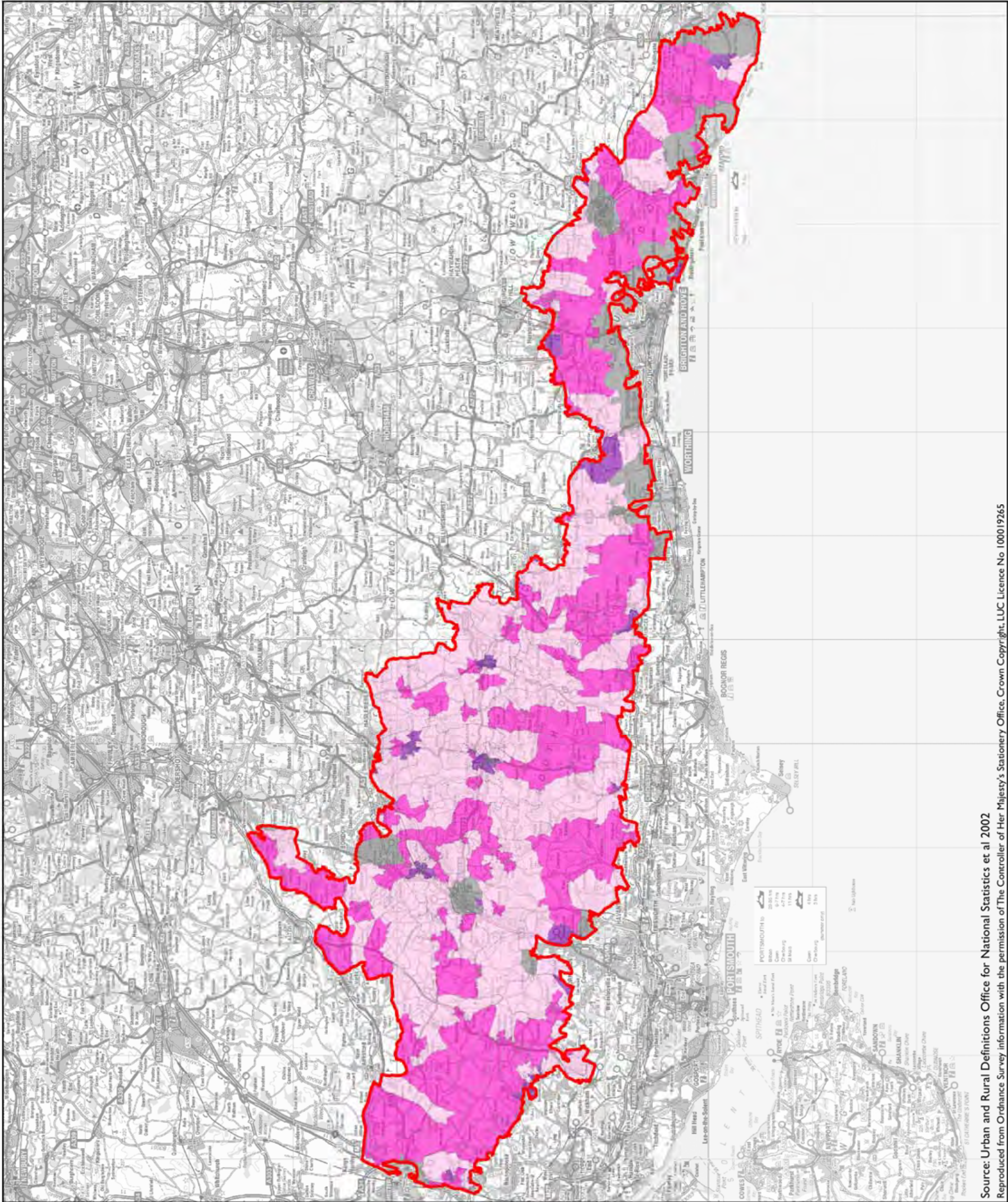
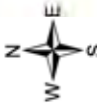
Figure 7.1: Urban and Rural
Census Output Areas

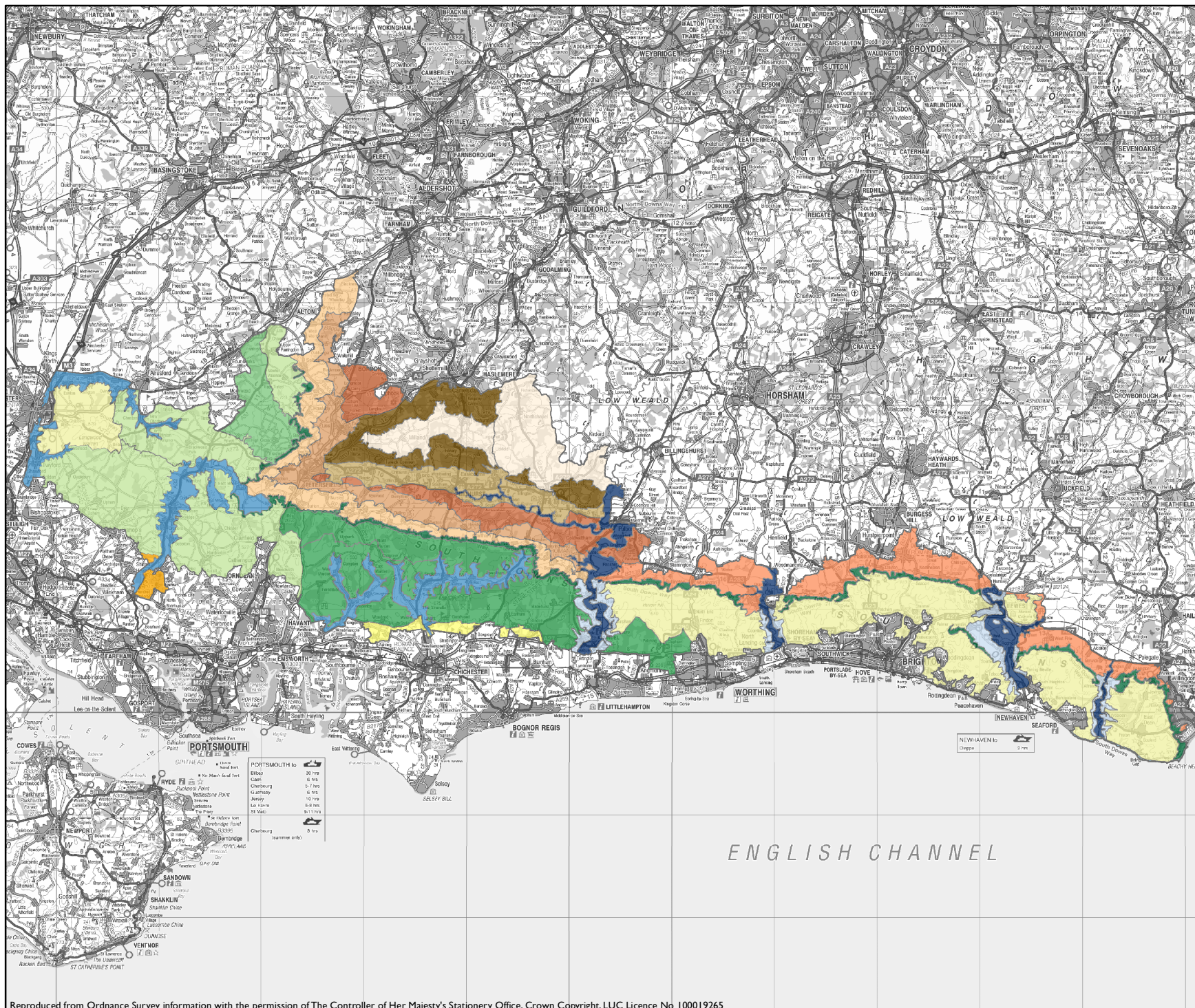
Key

- South Downs National Park
Boundary (confirmed 2009)
- Hamlet & Isolated - Less Sparse
- Town & Fringe - Less Sparse
- Urban > 10K - Less Sparse
- Village - Less Sparse

Data analysed and mapped using
Office of National Statistics
Output Areas

Date Prepared: 22/09/2011





South Downs Integrated Landscape Character Assessment

Figure 8.1: The South Downs Landscape Classification

Key

Landscape Types

- A: Open Downland
- B: Wooded Estate Downland
- C: Clay Plateau
- D: Downland Mosaic
- E: Chalk Valley Systems
- F: Major River Floodplains
- G: Major Valley Sides
- H: Major Scarps
- I: Scarp Footslopes
- J: Greensand Terrace
- K: Mixed Farmland and Woodland Vale
- L: Wealden Farmland and Heath Mosaic
- M: Sandy Arable Farmland
- N: Greensand Hills
- O: Low Weald
- P: Wooded Claylands
- Q: Upper Coastal Plain
- R: Shoreline

Note: See fold-out maps at the back of this report for more detailed boundaries

Date Prepared: 15/09/2005

